

Project: Rio Blanco County, CO  
Site: ELU A18 495 Pad  
Well: ELU A18 FED 14D-7 495  
Wellbore: Wellbore #1  
Design: Design #2  
Latitude: 39.709095  
Longitude: -108.104258  
Ground Level: 8029.0  
RKB @ 8059.0usft (30')

PROJECT DETAILS: Rio Blanco County, CO

Geodetic System: Universal Transverse Mercator (US Survey Feet)  
Datum: NAD 1927 - Western US  
Ellipsoid: Clarke 1866  
Zone: Zone 12N (114 W to 108 W)  
System Datum: Mean Sea Level

REFERENCE INFORMATION

Vertical (TVD) Reference: RKB @ 8059.0usft (30')  
Section (VS) Reference: Slot - 14D-7(0.0N, 0.0E)  
Measured Depth Reference: RKB @ 8059.0usft (30')  
Calculation Method: Minimum Curvature

FORMATION TOP DETAILS

TVDPath	MDPath	Formation
2800.0	2845.0	Wasatch
6599.0	6715.2	Wasatch G
6899.0	7020.8	Fort Union
8778.0	8930.4	Ohio Creek / TOG
9375.0	9527.5	Williams Fork
12512.0	12665.2	Cameo
13062.0	13215.3	Rollins

SECTION DETAILS

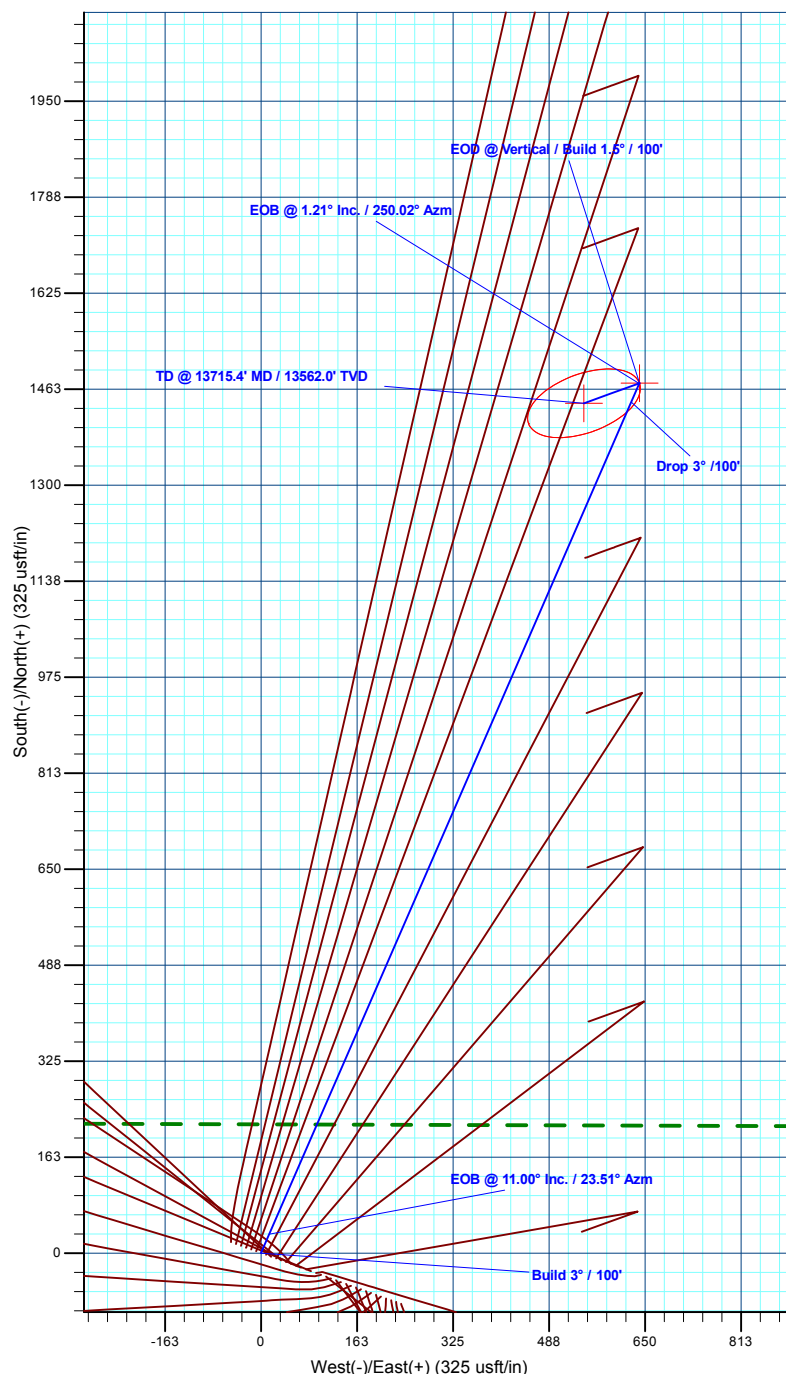
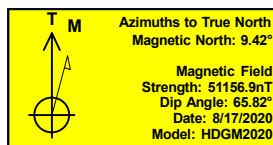
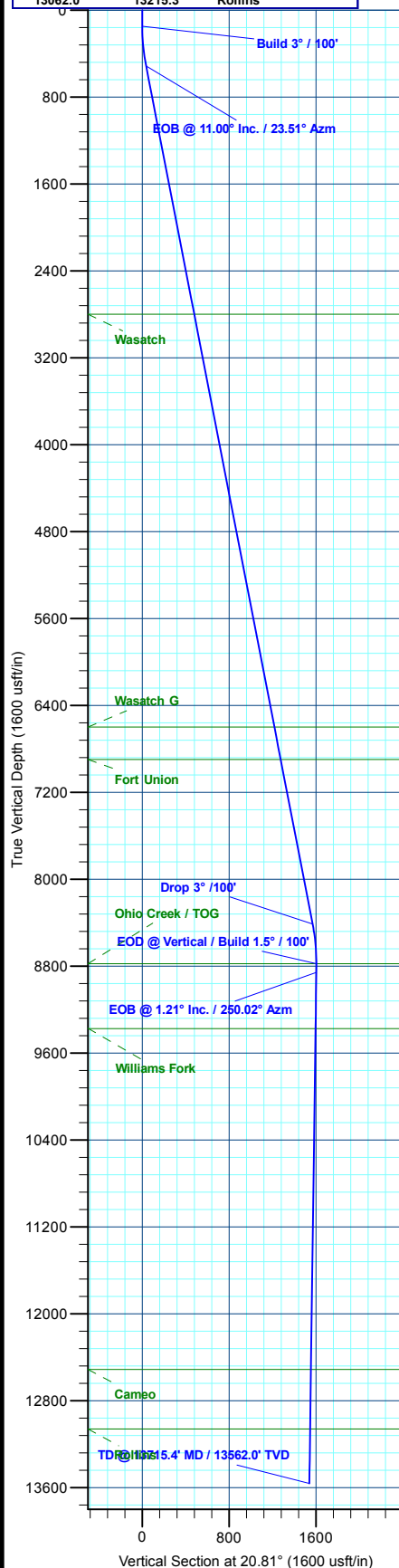
MD	Inc	Azi	TVD	+N/-S	+E/-W	Dleg	TFace	Vsect	Annotation
0.0	0.00	0.00	0.0	0.0	0.0	0.00	0.00	0.0	
150.0	0.00	0.00	150.0	0.0	0.0	0.00	0.00	0.0	Build 3° / 100'
516.7	11.00	23.51	514.5	32.2	14.0	3.00	23.51	35.1	EOB @ 11.00° Inc. / 23.51° Azm
8563.7	11.00	23.51	8413.5	1440.4	626.6	0.00	0.00	1569.1	Drop 3° / 100'
8930.4	0.00	0.00	8778.0	1472.6	640.6	3.00	180.00	1604.1	EOD @ Vertical / Build 1.5° / 100'
9010.9	1.21	250.02	8858.5	1472.3	639.8	1.50	250.02	1603.6	EOB @ 1.21° Inc. / 250.02° Azm
13715.4	1.21	250.02	13562.0	1438.4	546.6	0.00	0.00	1538.8	TD @ 13715.4' MD / 13562.0' TVD

DESIGN TARGET DETAILS

Name	TVD	+N/-S	+E/-W	Northing	Easting	Latitude	Longitude
14D-7 - OHCR	8778.0	1472.6	640.6	14434766.99	2455481.13	39.713137	-108.101982
14D-7 - PBHL	13562.0	1438.4	546.6	14434729.80	2455388.30	39.713043	-108.102316

WELL DETAILS: ELU A18 FED 14D-7 495

	+N/-S	+E/-W	Ground Level : 8029.0	Northing	Easting	Latitude	Longitude
	0.0	0.0		14433274.46	2454888.43	39.709095	-108.104258



Plan: Design #2 (ELU A18 FED 14D-7 495/Wellbore #1)

Created By: Will Jircik

Date: 12:28, May 18 2022



## **Caerus Oil & Gas**

**Rio Blanco County, CO**

**ELU A18 495 Pad**

**ELU A18 FED 14D-7 495 - Slot 14D-7**

**Wellbore #1**

**Plan: Design #2**

## **KLX Well Planning Report**

**18 May, 2022**



<b>Database:</b>	EDM 5000.1 Single User Db	<b>Local Co-ordinate Reference:</b>	Well ELU A18 FED 14D-7 495 - Slot 14D-7
<b>Company:</b>	Caerus Oil & Gas	<b>TVD Reference:</b>	RKB @ 8059.0usft (30')
<b>Project:</b>	Rio Blanco County, CO	<b>MD Reference:</b>	RKB @ 8059.0usft (30')
<b>Site:</b>	ELU A18 495 Pad	<b>North Reference:</b>	True
<b>Well:</b>	ELU A18 FED 14D-7 495	<b>Survey Calculation Method:</b>	Minimum Curvature
<b>Wellbore:</b>	Wellbore #1		
<b>Design:</b>	Design #2		

<b>Project</b>	Rio Blanco County, CO		
<b>Map System:</b>	Universal Transverse Mercator (US Survey Fee	<b>System Datum:</b>	Mean Sea Level
<b>Geo Datum:</b>	NAD 1927 - Western US		
<b>Map Zone:</b>	Zone 12N (114 W to 108 W)		

Site		ELU A18 495 Pad				
Site Position:		Northing:	14,433,279.80 usft	Latitude:	39.709109	
From:	Map	Easting:	2,454,904.40 usft	Longitude:	-108.104201	
Position Uncertainty:		0.0 usft	Slot Radius:	13-3/16 "	Grid Convergence:	1.85 °

Well	ELU A18 FED 14D-7 495 - Slot 14D-7					
Well Position	+N/-S	-4.8 usft	Northing:	14,433,274.46 usft	Latitude:	39.709095
	+E/-W	-16.1 usft	Easting:	2,454,888.43 usft	Longitude:	-108.104258
Position Uncertainty		0.0 usft	Wellhead Elevation:		Ground Level:	8,029.0 usft

<b>Wellbore</b>	Wellbore #1				
<b>Magnetics</b>	<b>Model Name</b>	<b>Sample Date</b>	<b>Declination (°)</b>	<b>Dip Angle (°)</b>	<b>Field Strength (nT)</b>
	HDGM2020	8/17/2020	9.42	65.82	51,156.90000000

<b>Design</b>	Design #2			
<b>Audit Notes:</b>				
<b>Version:</b>	<b>Phase:</b>	PLAN	<b>Tie On Depth:</b>	0.0
<b>Vertical Section:</b>	<b>Depth From (TVD) (usft)</b>	<b>+N/-S (usft)</b>	<b>+E/-W (usft)</b>	<b>Direction (°)</b>
	0.0	0.0	0.0	20.81

<b>Plan Sections</b>										
Measured Depth (usft)	Inclination (°)	Azimuth (°)	Vertical Depth (usft)	+N/-S (usft)	+E/-W (usft)	Dogleg Rate (°/100usft)	Build Rate (°/100usft)	Turn Rate (°/100usft)	TFO (°)	Target
0.0	0.00	0.00	0.0	0.0	0.0	0.00	0.00	0.00	0.00	
150.0	0.00	0.00	150.0	0.0	0.0	0.00	0.00	0.00	0.00	
516.7	11.00	23.51	514.5	32.2	14.0	3.00	3.00	0.00	23.51	
8,563.7	11.00	23.51	8,413.5	1,440.4	626.6	0.00	0.00	0.00	0.00	
8,930.4	0.00	0.00	8,778.0	1,472.6	640.6	3.00	-3.00	0.00	180.00	14D-7 - OHCR
9,010.9	1.21	250.02	8,858.5	1,472.3	639.8	1.50	1.50	-136.60	250.02	
13,715.4	1.21	250.02	13,562.0	1,438.4	546.6	0.00	0.00	0.00	0.00	14D-7 - PBHL

<b>Database:</b>	EDM 5000.1 Single User Db	<b>Local Co-ordinate Reference:</b>	Well ELU A18 FED 14D-7 495 - Slot 14D-7
<b>Company:</b>	Caerus Oil & Gas	<b>TVD Reference:</b>	RKB @ 8059.0usft (30')
<b>Project:</b>	Rio Blanco County, CO	<b>MD Reference:</b>	RKB @ 8059.0usft (30')
<b>Site:</b>	ELU A18 495 Pad	<b>North Reference:</b>	True
<b>Well:</b>	ELU A18 FED 14D-7 495	<b>Survey Calculation Method:</b>	Minimum Curvature
<b>Wellbore:</b>	Wellbore #1		
<b>Design:</b>	Design #2		

Planned Survey									
Measured Depth (usft)	Inclination (°)	Azimuth (°)	Vertical Depth (usft)	+N/-S (usft)	+E/-W (usft)	Vertical Section (usft)	Dogleg Rate (°/100usft)	Build Rate (°/100usft)	Turn Rate (°/100usft)
0.0	0.00	0.00	0.0	0.0	0.0	0.0	0.00	0.00	0.00
100.0	0.00	0.00	100.0	0.0	0.0	0.0	0.00	0.00	0.00
<b>Build 3° / 100'</b>									
150.0	0.00	0.00	150.0	0.0	0.0	0.0	0.00	0.00	0.00
200.0	1.50	23.51	200.0	0.6	0.3	0.7	3.00	3.00	0.00
300.0	4.50	23.51	299.8	5.4	2.3	5.9	3.00	3.00	0.00
400.0	7.50	23.51	399.3	15.0	6.5	16.3	3.00	3.00	0.00
500.0	10.50	23.51	498.0	29.3	12.8	31.9	3.00	3.00	0.00
<b>EOB @ 11.00° Inc. / 23.51° Azm</b>									
516.7	11.00	23.51	514.5	32.2	14.0	35.1	3.00	3.00	0.00
600.0	11.00	23.51	596.2	46.8	20.3	50.9	0.00	0.00	0.00
700.0	11.00	23.51	694.4	64.3	28.0	70.0	0.00	0.00	0.00
800.0	11.00	23.51	792.5	81.8	35.6	89.1	0.00	0.00	0.00
900.0	11.00	23.51	890.7	99.3	43.2	108.1	0.00	0.00	0.00
1,000.0	11.00	23.51	988.9	116.8	50.8	127.2	0.00	0.00	0.00
1,100.0	11.00	23.51	1,087.0	134.3	58.4	146.3	0.00	0.00	0.00
1,200.0	11.00	23.51	1,185.2	151.8	66.0	165.3	0.00	0.00	0.00
1,300.0	11.00	23.51	1,283.4	169.3	73.6	184.4	0.00	0.00	0.00
1,400.0	11.00	23.51	1,381.5	186.8	81.2	203.4	0.00	0.00	0.00
1,500.0	11.00	23.51	1,479.7	204.3	88.9	222.5	0.00	0.00	0.00
1,600.0	11.00	23.51	1,577.8	221.8	96.5	241.6	0.00	0.00	0.00
1,700.0	11.00	23.51	1,676.0	239.3	104.1	260.6	0.00	0.00	0.00
1,800.0	11.00	23.51	1,774.2	256.8	111.7	279.7	0.00	0.00	0.00
1,900.0	11.00	23.51	1,872.3	274.3	119.3	298.8	0.00	0.00	0.00
2,000.0	11.00	23.51	1,970.5	291.8	126.9	317.8	0.00	0.00	0.00
2,100.0	11.00	23.51	2,068.7	309.3	134.5	336.9	0.00	0.00	0.00
2,200.0	11.00	23.51	2,166.8	326.8	142.1	355.9	0.00	0.00	0.00
2,300.0	11.00	23.51	2,265.0	344.3	149.8	375.0	0.00	0.00	0.00
2,400.0	11.00	23.51	2,363.1	361.8	157.4	394.1	0.00	0.00	0.00
2,500.0	11.00	23.51	2,461.3	379.3	165.0	413.1	0.00	0.00	0.00
2,600.0	11.00	23.51	2,559.5	396.8	172.6	432.2	0.00	0.00	0.00
2,700.0	11.00	23.51	2,657.6	414.3	180.2	451.3	0.00	0.00	0.00
2,800.0	11.00	23.51	2,755.8	431.8	187.8	470.3	0.00	0.00	0.00
<b>Wasatch</b>									
2,845.0	11.00	23.51	2,800.0	439.6	191.3	478.9	0.00	0.00	0.00
2,900.0	11.00	23.51	2,853.9	449.3	195.4	489.4	0.00	0.00	0.00
3,000.0	11.00	23.51	2,952.1	466.8	203.0	508.5	0.00	0.00	0.00
3,100.0	11.00	23.51	3,050.3	484.3	210.7	527.5	0.00	0.00	0.00
3,200.0	11.00	23.51	3,148.4	501.8	218.3	546.6	0.00	0.00	0.00
3,300.0	11.00	23.51	3,246.6	519.3	225.9	565.6	0.00	0.00	0.00
3,400.0	11.00	23.51	3,344.8	536.8	233.5	584.7	0.00	0.00	0.00
3,500.0	11.00	23.51	3,442.9	554.3	241.1	603.8	0.00	0.00	0.00
3,600.0	11.00	23.51	3,541.1	571.8	248.7	622.8	0.00	0.00	0.00
3,700.0	11.00	23.51	3,639.2	589.3	256.3	641.9	0.00	0.00	0.00
3,800.0	11.00	23.51	3,737.4	606.8	264.0	661.0	0.00	0.00	0.00
3,900.0	11.00	23.51	3,835.6	624.3	271.6	680.0	0.00	0.00	0.00
4,000.0	11.00	23.51	3,933.7	641.8	279.2	699.1	0.00	0.00	0.00
4,100.0	11.00	23.51	4,031.9	659.3	286.8	718.1	0.00	0.00	0.00
4,200.0	11.00	23.51	4,130.1	676.8	294.4	737.2	0.00	0.00	0.00
4,300.0	11.00	23.51	4,228.2	694.3	302.0	756.3	0.00	0.00	0.00
4,400.0	11.00	23.51	4,326.4	711.8	309.6	775.3	0.00	0.00	0.00
4,500.0	11.00	23.51	4,424.5	729.3	317.2	794.4	0.00	0.00	0.00
4,600.0	11.00	23.51	4,522.7	746.8	324.9	813.5	0.00	0.00	0.00

<b>Database:</b>	EDM 5000.1 Single User Db	<b>Local Co-ordinate Reference:</b>	Well ELU A18 FED 14D-7 495 - Slot 14D-7
<b>Company:</b>	Caerus Oil & Gas	<b>TVD Reference:</b>	RKB @ 8059.0usft (30')
<b>Project:</b>	Rio Blanco County, CO	<b>MD Reference:</b>	RKB @ 8059.0usft (30')
<b>Site:</b>	ELU A18 495 Pad	<b>North Reference:</b>	True
<b>Well:</b>	ELU A18 FED 14D-7 495	<b>Survey Calculation Method:</b>	Minimum Curvature
<b>Wellbore:</b>	Wellbore #1		
<b>Design:</b>	Design #2		

Planned Survey									
Measured Depth (usft)	Inclination (°)	Azimuth (°)	Vertical Depth (usft)	+N/-S (usft)	+E/-W (usft)	Vertical Section (usft)	Dogleg Rate (°/100usft)	Build Rate (°/100usft)	Turn Rate (°/100usft)
4,700.0	11.00	23.51	4,620.9	764.3	332.5	832.5	0.00	0.00	0.00
4,800.0	11.00	23.51	4,719.0	781.8	340.1	851.6	0.00	0.00	0.00
4,900.0	11.00	23.51	4,817.2	799.3	347.7	870.6	0.00	0.00	0.00
5,000.0	11.00	23.51	4,915.4	816.8	355.3	889.7	0.00	0.00	0.00
5,100.0	11.00	23.51	5,013.5	834.3	362.9	908.8	0.00	0.00	0.00
5,200.0	11.00	23.51	5,111.7	851.8	370.5	927.8	0.00	0.00	0.00
5,300.0	11.00	23.51	5,209.8	869.3	378.1	946.9	0.00	0.00	0.00
5,400.0	11.00	23.51	5,308.0	886.8	385.8	966.0	0.00	0.00	0.00
5,500.0	11.00	23.51	5,406.2	904.3	393.4	985.0	0.00	0.00	0.00
5,600.0	11.00	23.51	5,504.3	921.8	401.0	1,004.1	0.00	0.00	0.00
5,700.0	11.00	23.51	5,602.5	939.3	408.6	1,023.2	0.00	0.00	0.00
5,800.0	11.00	23.51	5,700.6	956.8	416.2	1,042.2	0.00	0.00	0.00
5,900.0	11.00	23.51	5,798.8	974.3	423.8	1,061.3	0.00	0.00	0.00
6,000.0	11.00	23.51	5,897.0	991.8	431.4	1,080.3	0.00	0.00	0.00
6,100.0	11.00	23.51	5,995.1	1,009.3	439.0	1,099.4	0.00	0.00	0.00
6,200.0	11.00	23.51	6,093.3	1,026.8	446.7	1,118.5	0.00	0.00	0.00
6,300.0	11.00	23.51	6,191.5	1,044.3	454.3	1,137.5	0.00	0.00	0.00
6,400.0	11.00	23.51	6,289.6	1,061.8	461.9	1,156.6	0.00	0.00	0.00
6,500.0	11.00	23.51	6,387.8	1,079.3	469.5	1,175.7	0.00	0.00	0.00
6,600.0	11.00	23.51	6,485.9	1,096.8	477.1	1,194.7	0.00	0.00	0.00
6,700.0	11.00	23.51	6,584.1	1,114.3	484.7	1,213.8	0.00	0.00	0.00
<b>Wasatch G</b>									
6,715.2	11.00	23.51	6,599.0	1,116.9	485.9	1,216.7	0.00	0.00	0.00
6,800.0	11.00	23.51	6,682.3	1,131.8	492.3	1,232.8	0.00	0.00	0.00
6,900.0	11.00	23.51	6,780.4	1,149.3	499.9	1,251.9	0.00	0.00	0.00
7,000.0	11.00	23.51	6,878.6	1,166.8	507.6	1,271.0	0.00	0.00	0.00
<b>Fort Union</b>									
7,020.8	11.00	23.51	6,899.0	1,170.4	509.1	1,274.9	0.00	0.00	0.00
7,100.0	11.00	23.51	6,976.8	1,184.3	515.2	1,290.0	0.00	0.00	0.00
7,200.0	11.00	23.51	7,074.9	1,201.8	522.8	1,309.1	0.00	0.00	0.00
7,300.0	11.00	23.51	7,173.1	1,219.3	530.4	1,328.2	0.00	0.00	0.00
7,400.0	11.00	23.51	7,271.2	1,236.8	538.0	1,347.2	0.00	0.00	0.00
7,500.0	11.00	23.51	7,369.4	1,254.3	545.6	1,366.3	0.00	0.00	0.00
7,600.0	11.00	23.51	7,467.6	1,271.8	553.2	1,385.4	0.00	0.00	0.00
7,700.0	11.00	23.51	7,565.7	1,289.3	560.9	1,404.4	0.00	0.00	0.00
7,800.0	11.00	23.51	7,663.9	1,306.8	568.5	1,423.5	0.00	0.00	0.00
7,900.0	11.00	23.51	7,762.0	1,324.3	576.1	1,442.5	0.00	0.00	0.00
8,000.0	11.00	23.51	7,860.2	1,341.8	583.7	1,461.6	0.00	0.00	0.00
8,100.0	11.00	23.51	7,958.4	1,359.3	591.3	1,480.7	0.00	0.00	0.00
8,200.0	11.00	23.51	8,056.5	1,376.8	598.9	1,499.7	0.00	0.00	0.00
8,300.0	11.00	23.51	8,154.7	1,394.3	606.5	1,518.8	0.00	0.00	0.00
8,400.0	11.00	23.51	8,252.9	1,411.8	614.1	1,537.9	0.00	0.00	0.00
8,500.0	11.00	23.51	8,351.0	1,429.3	621.8	1,556.9	0.00	0.00	0.00
<b>Drop 3° /100'</b>									
8,563.7	11.00	23.51	8,413.5	1,440.4	626.6	1,569.1	0.00	0.00	0.00
8,600.0	9.91	23.51	8,449.2	1,446.5	629.2	1,575.6	3.00	-3.00	0.00
8,700.0	6.91	23.51	8,548.2	1,459.9	635.1	1,590.3	3.00	-3.00	0.00
8,800.0	3.91	23.51	8,647.7	1,468.5	638.8	1,599.7	3.00	-3.00	0.00
8,900.0	0.91	23.51	8,747.6	1,472.4	640.5	1,603.9	3.00	-3.00	0.00
<b>EOD @ Vertical / Build 1.5° / 100' - Ohio Creek / TOG</b>									
8,930.4	0.00	0.00	8,778.0	1,472.6	640.6	1,604.1	3.00	-3.00	0.00
9,000.0	1.04	250.02	8,847.6	1,472.4	640.0	1,603.7	1.50	1.50	0.00
<b>EOB @ 1.21° Inc. / 250.02° Azm</b>									
9,010.9	1.21	250.02	8,858.5	1,472.3	639.8	1,603.6	1.50	1.50	0.00

<b>Database:</b>	EDM 5000.1 Single User Db	<b>Local Co-ordinate Reference:</b>	Well ELU A18 FED 14D-7 495 - Slot 14D-7
<b>Company:</b>	Caerus Oil & Gas	<b>TVD Reference:</b>	RKB @ 8059.0usft (30')
<b>Project:</b>	Rio Blanco County, CO	<b>MD Reference:</b>	RKB @ 8059.0usft (30')
<b>Site:</b>	ELU A18 495 Pad	<b>North Reference:</b>	True
<b>Well:</b>	ELU A18 FED 14D-7 495	<b>Survey Calculation Method:</b>	Minimum Curvature
<b>Wellbore:</b>	Wellbore #1		
<b>Design:</b>	Design #2		

Planned Survey									
Measured Depth (usft)	Inclination (°)	Azimuth (°)	Vertical Depth (usft)	+N/-S (usft)	+E/-W (usft)	Vertical Section (usft)	Dogleg Rate (°/100usft)	Build Rate (°/100usft)	Turn Rate (°/100usft)
9,100.0	1.21	250.02	8,947.6	1,471.7	638.0	1,602.3	0.00	0.00	0.00
9,200.0	1.21	250.02	9,047.6	1,471.0	636.1	1,601.0	0.00	0.00	0.00
9,300.0	1.21	250.02	9,147.5	1,470.2	634.1	1,599.6	0.00	0.00	0.00
9,400.0	1.21	250.02	9,247.5	1,469.5	632.1	1,598.2	0.00	0.00	0.00
9,500.0	1.21	250.02	9,347.5	1,468.8	630.1	1,596.8	0.00	0.00	0.00
<b>Williams Fork</b>									
9,527.5	1.21	250.02	9,375.0	1,468.6	629.6	1,596.5	0.00	0.00	0.00
9,600.0	1.21	250.02	9,447.5	1,468.1	628.1	1,595.5	0.00	0.00	0.00
9,700.0	1.21	250.02	9,547.4	1,467.4	626.2	1,594.1	0.00	0.00	0.00
9,800.0	1.21	250.02	9,647.4	1,466.6	624.2	1,592.7	0.00	0.00	0.00
9,900.0	1.21	250.02	9,747.4	1,465.9	622.2	1,591.3	0.00	0.00	0.00
10,000.0	1.21	250.02	9,847.4	1,465.2	620.2	1,589.9	0.00	0.00	0.00
10,100.0	1.21	250.02	9,947.4	1,464.5	618.2	1,588.6	0.00	0.00	0.00
10,200.0	1.21	250.02	10,047.3	1,463.8	616.3	1,587.2	0.00	0.00	0.00
10,300.0	1.21	250.02	10,147.3	1,463.0	614.3	1,585.8	0.00	0.00	0.00
10,400.0	1.21	250.02	10,247.3	1,462.3	612.3	1,584.4	0.00	0.00	0.00
10,500.0	1.21	250.02	10,347.3	1,461.6	610.3	1,583.1	0.00	0.00	0.00
10,600.0	1.21	250.02	10,447.2	1,460.9	608.3	1,581.7	0.00	0.00	0.00
10,700.0	1.21	250.02	10,547.2	1,460.2	606.3	1,580.3	0.00	0.00	0.00
10,800.0	1.21	250.02	10,647.2	1,459.4	604.4	1,578.9	0.00	0.00	0.00
10,900.0	1.21	250.02	10,747.2	1,458.7	602.4	1,577.6	0.00	0.00	0.00
11,000.0	1.21	250.02	10,847.2	1,458.0	600.4	1,576.2	0.00	0.00	0.00
11,100.0	1.21	250.02	10,947.1	1,457.3	598.4	1,574.8	0.00	0.00	0.00
11,200.0	1.21	250.02	11,047.1	1,456.5	596.4	1,573.4	0.00	0.00	0.00
11,300.0	1.21	250.02	11,147.1	1,455.8	594.5	1,572.0	0.00	0.00	0.00
11,400.0	1.21	250.02	11,247.1	1,455.1	592.5	1,570.7	0.00	0.00	0.00
11,500.0	1.21	250.02	11,347.0	1,454.4	590.5	1,569.3	0.00	0.00	0.00
11,600.0	1.21	250.02	11,447.0	1,453.7	588.5	1,567.9	0.00	0.00	0.00
11,700.0	1.21	250.02	11,547.0	1,452.9	586.5	1,566.5	0.00	0.00	0.00
11,800.0	1.21	250.02	11,647.0	1,452.2	584.6	1,565.2	0.00	0.00	0.00
11,900.0	1.21	250.02	11,747.0	1,451.5	582.6	1,563.8	0.00	0.00	0.00
12,000.0	1.21	250.02	11,846.9	1,450.8	580.6	1,562.4	0.00	0.00	0.00
12,100.0	1.21	250.02	11,946.9	1,450.1	578.6	1,561.0	0.00	0.00	0.00
12,200.0	1.21	250.02	12,046.9	1,449.3	576.6	1,559.7	0.00	0.00	0.00
12,300.0	1.21	250.02	12,146.9	1,448.6	574.7	1,558.3	0.00	0.00	0.00
12,400.0	1.21	250.02	12,246.8	1,447.9	572.7	1,556.9	0.00	0.00	0.00
12,500.0	1.21	250.02	12,346.8	1,447.2	570.7	1,555.5	0.00	0.00	0.00
12,600.0	1.21	250.02	12,446.8	1,446.5	568.7	1,554.2	0.00	0.00	0.00
<b>Cameo</b>									
12,665.2	1.21	250.02	12,512.0	1,446.0	567.4	1,553.3	0.00	0.00	0.00
12,700.0	1.21	250.02	12,546.8	1,445.7	566.7	1,552.8	0.00	0.00	0.00
12,800.0	1.21	250.02	12,646.8	1,445.0	564.8	1,551.4	0.00	0.00	0.00
12,900.0	1.21	250.02	12,746.7	1,444.3	562.8	1,550.0	0.00	0.00	0.00
13,000.0	1.21	250.02	12,846.7	1,443.6	560.8	1,548.6	0.00	0.00	0.00
13,100.0	1.21	250.02	12,946.7	1,442.9	558.8	1,547.3	0.00	0.00	0.00
13,200.0	1.21	250.02	13,046.7	1,442.1	556.8	1,545.9	0.00	0.00	0.00
<b>Rollins</b>									
13,215.3	1.21	250.02	13,062.0	1,442.0	556.5	1,545.7	0.00	0.00	0.00
13,300.0	1.21	250.02	13,146.6	1,441.4	554.8	1,544.5	0.00	0.00	0.00
13,400.0	1.21	250.02	13,246.6	1,440.7	552.9	1,543.1	0.00	0.00	0.00
13,500.0	1.21	250.02	13,346.6	1,440.0	550.9	1,541.8	0.00	0.00	0.00
13,600.0	1.21	250.02	13,446.6	1,439.3	548.9	1,540.4	0.00	0.00	0.00
13,700.0	1.21	250.02	13,546.6	1,438.5	546.9	1,539.0	0.00	0.00	0.00

<b>Database:</b>	EDM 5000.1 Single User Db	<b>Local Co-ordinate Reference:</b>	Well ELU A18 FED 14D-7 495 - Slot 14D-7
<b>Company:</b>	Caerus Oil & Gas	<b>TVD Reference:</b>	RKB @ 8059.0usft (30')
<b>Project:</b>	Rio Blanco County, CO	<b>MD Reference:</b>	RKB @ 8059.0usft (30')
<b>Site:</b>	ELU A18 495 Pad	<b>North Reference:</b>	True
<b>Well:</b>	ELU A18 FED 14D-7 495	<b>Survey Calculation Method:</b>	Minimum Curvature
<b>Wellbore:</b>	Wellbore #1		
<b>Design:</b>	Design #2		

Planned Survey									
Measured Depth (usft)	Inclination (°)	Azimuth (°)	Vertical Depth (usft)	+N/-S (usft)	+E/-W (usft)	Vertical Section (usft)	Dogleg Rate (°/100usft)	Build Rate (°/100usft)	Turn Rate (°/100usft)
TD @ 13715.4' MD / 13562.0' TVD									
13,715.4	1.21	250.02	13,562.0	1,438.4	546.6	1,538.8	0.00	0.00	0.00

Design Targets									
Target Name	Dip Angle (°)	Dip Dir. (°)	TVD (usft)	+N/-S (usft)	+E/-W (usft)	Northing (usft)	Easting (usft)	Latitude	Longitude
- hit/miss target									
- Shape									
14D-7 - OHCR	0.00	0.00	8,778.0	1,472.6	640.6	14,434,766.99	2,455,481.13	39.713137	-108.101982
- plan hits target center									
- Point									
14D-7 - PBHL	0.00	0.00	13,562.0	1,438.4	546.6	14,434,729.80	2,455,388.30	39.713043	-108.102316
- plan hits target center									
- Ellipse (radii L100.0 W50.0 on 250.00 azi)									

Formations						
Measured Depth (usft)	Vertical Depth (usft)	Name	Lithology	Dip (°)	Dip Direction (°)	
2,845.0	2,800.0	Wasatch				
6,715.2	6,599.0	Wasatch G				
7,020.8	6,899.0	Fort Union				
8,930.4	8,778.0	Ohio Creek / TOG				
9,527.5	9,375.0	Williams Fork				
12,665.2	12,512.0	Cameo				
13,215.3	13,062.0	Rollins				

Plan Annotations				
Measured Depth (usft)	Vertical Depth (usft)	Local Coordinates		Comment
		+N/-S (usft)	+E/-W (usft)	
150.0	150.0	0.0	0.0	Build 3° / 100'
516.7	514.5	32.2	14.0	EOB @ 11.00° Inc. / 23.51° Azm
8,563.7	8,413.5	1,440.4	626.6	Drop 3° / 100'
8,930.4	8,778.0	1,472.6	640.6	EOD @ Vertical / Build 1.5° / 100'
9,010.9	8,858.5	1,472.3	639.8	EOB @ 1.21° Inc. / 250.02° Azm
13,715.4	13,562.0	1,438.4	546.6	TD @ 13715.4' MD / 13562.0' TVD