

Project: Rio Blanco County, CO
 Site: ELU A18 495 Pad
 Well: ELU A18 FED 13C-7 495
 Wellbore: Wellbore #1
 Design: Design #2
 Latitude: 39.709137
 Longitude: -108.104408
 Ground Level: 8029.0
 RKB @ 8059.0usft (30')

PROJECT DETAILS: Rio Blanco County, CO

Geodetic System: Universal Transverse Mercator (US Survey Feet)
 Datum: NAD 1927 - Western US
 Ellipsoid: Clarke 1866
 Zone: Zone 12N (114 W to 108 W)
 System Datum: Mean Sea Level

REFERENCE INFORMATION

Vertical (TVD) Reference: RKB @ 8059.0usft (30')
 Section (VS) Reference: Slot - 13C-7(0.0N, 0.0E)
 Measured Depth Reference: RKB @ 8059.0usft (30')
 Calculation Method: Minimum Curvature

SECTION DETAILS

MD	Inc	Azi	TVD	+N/-S	+E/-W	Dleg	TFace	VSec	Annotation
0.0	0.00	0.00	0.0	0.0	0.0	0.00	0.00	0.0	
100.0	0.00	0.00	100.0	0.0	0.0	0.00	0.00	0.0	Build 3° / 100'
747.6	19.43	13.64	735.2	105.7	25.6	3.00	13.64	108.7	EOB @ 19.43° Inc. / 13.64° Azm
8656.4	19.43	13.64	8193.8	2662.1	645.8	0.00	0.00	2738.1	Drop 3° / 100'
9304.0	0.00	0.00	8829.0	2767.7	671.4	3.00	180.00	2846.7	EOD @ Vertical / Build 1.5° / 100'
9385.3	1.22	250.02	8910.3	2767.4	670.6	1.50	250.02	2846.3	EOB @ 1.22° Inc. / 250.02° Azm
14043.0	1.22	250.02	13567.0	2733.6	577.4	0.00	0.00	2793.9	TD @ 14043.0' MD / 13567.0' TVD

FORMATION TOP DETAILS

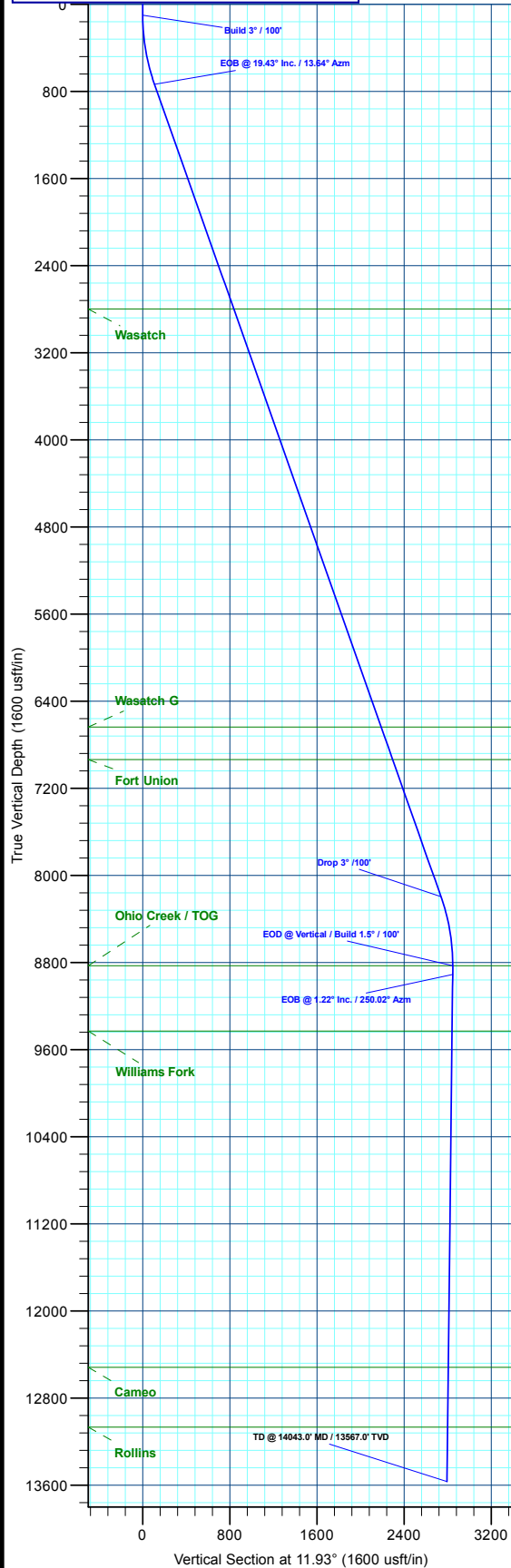
TVDPATH	MDPATH	FORMATION
2800.0	2937.0	Wasatch
6637.0	7005.6	Wasatch G
6937.0	7323.8	Fort Union
8829.0	9304.0	Ohio Creek / TOG
9430.0	9905.1	Williams Fork
12517.0	12992.8	Cameo
13067.0	13542.9	Rollins

DESIGN TARGET DETAILS

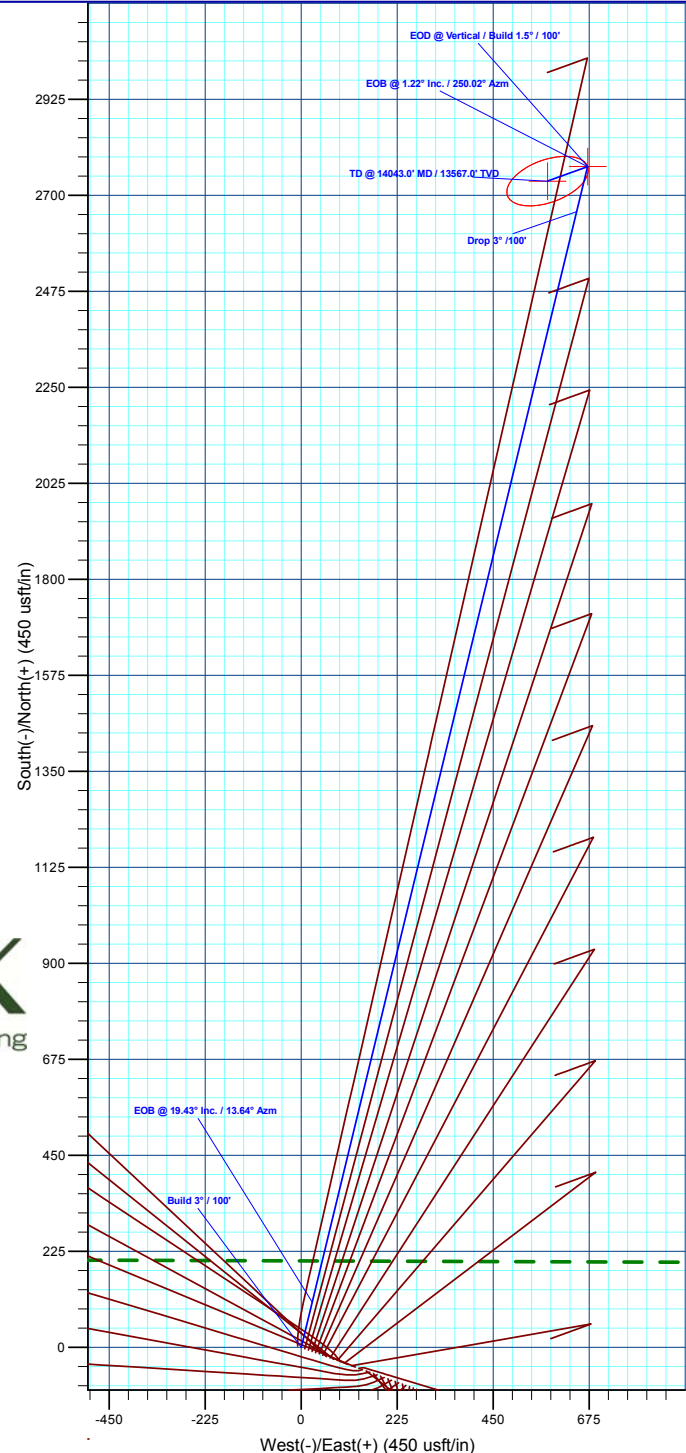
Name	TVD	+N/-S	+E/-W	Northing	Easting	Latitude	Longitude
13C-7 - OHCR	829.0	2767.7	671.4	14436076.39	2455427.33	39.716733	-108.102022
13C-7 - PBHL	3567.0	2733.6	577.4	14436039.20	2455334.50	39.716639	-108.102356

WELL DETAILS: ELU A18 FED 13C-7 495

Ground Level : 8029.0		Latitude	Longitude
+N/-S	+E/-W	Northing	Easting
0.0	0.0	14433288.41	2454845.65
		39.709137	-108.104408



T M
 Azimuths to True North
 Magnetic North: 9.42°
 Magnetic Field
 Strength: 51156.9nT
 Dip Angle: 65.82°
 Date: 8/17/2020
 Model: HDGM2020



Plan: Design #2 (ELU A18 FED 13C-7 495/Wellbore #1)

Created By: Will Jircik Date: 11:54, May 18 2022



Caerus Oil & Gas

Rio Blanco County, CO

ELU A18 495 Pad

ELU A18 FED 13C-7 495 - Slot 13C-7

Wellbore #1

Plan: Design #2

KLX Well Planning Report

18 May, 2022



Database:	EDM 5000.1 Single User Db	Local Co-ordinate Reference:	Well ELU A18 FED 13C-7 495 - Slot 13C-7
Company:	Caerus Oil & Gas	TVD Reference:	RKB @ 8059.0usft (30')
Project:	Rio Blanco County, CO	MD Reference:	RKB @ 8059.0usft (30')
Site:	ELU A18 495 Pad	North Reference:	True
Well:	ELU A18 FED 13C-7 495	Survey Calculation Method:	Minimum Curvature
Wellbore:	Wellbore #1		
Design:	Design #2		

Project	Rio Blanco County, CO		
Map System:	Universal Transverse Mercator (US Survey Fee	System Datum:	Mean Sea Level
Geo Datum:	NAD 1927 - Western US		
Map Zone:	Zone 12N (114 W to 108 W)		

Site	ELU A18 495 Pad				
Site Position:		Northing:	14,433,279.80 usft	Latitude:	39.709109
From:	Map	Easting:	2,454,904.40 usft	Longitude:	-108.104201
Position Uncertainty:	0.0 usft	Slot Radius:	13-3/16 "	Grid Convergence:	1.85 °

Well	ELU A18 FED 13C-7 495 - Slot 13C-7					
Well Position	+N/-S	10.5 usft	Northing:	14,433,288.41 usft	Latitude:	39.709137
	+E/-W	-58.4 usft	Easting:	2,454,845.65 usft	Longitude:	-108.104408
Position Uncertainty		0.0 usft	Wellhead Elevation:		Ground Level:	8,029.0 usft

Wellbore	Wellbore #1				
Magnetics	Model Name	Sample Date	Declination (°)	Dip Angle (°)	Field Strength (nT)
	HDGM2020	8/17/2020	9.42	65.82	51,156.90000000

Design	Design #2			
Audit Notes:				
Version:	Phase:	PLAN	Tie On Depth:	0.0
Vertical Section:	Depth From (TVD) (usft)	+N/-S (usft)	+E/-W (usft)	Direction (°)
	0.0	0.0	0.0	11.93

Plan Sections										
Measured Depth (usft)	Inclination (°)	Azimuth (°)	Vertical Depth (usft)	+N/-S (usft)	+E/-W (usft)	Dogleg Rate (°/100usft)	Build Rate (°/100usft)	Turn Rate (°/100usft)	TFO (°)	Target
0.0	0.00	0.00	0.0	0.0	0.0	0.00	0.00	0.00	0.00	
100.0	0.00	0.00	100.0	0.0	0.0	0.00	0.00	0.00	0.00	
747.6	19.43	13.64	735.2	105.7	25.6	3.00	3.00	0.00	13.64	
8,656.4	19.43	13.64	8,193.8	2,662.1	645.8	0.00	0.00	0.00	0.00	
9,304.0	0.00	0.00	8,829.0	2,767.7	671.4	3.00	-3.00	0.00	180.00	13C-7 - OHCR
9,385.3	1.22	250.02	8,910.3	2,767.4	670.6	1.50	1.50	-135.27	250.02	
14,043.0	1.22	250.02	13,567.0	2,733.6	577.4	0.00	0.00	0.00	0.00	13C-7 - PBHL

Database:	EDM 5000.1 Single User Db	Local Co-ordinate Reference:	Well ELU A18 FED 13C-7 495 - Slot 13C-7
Company:	Caerus Oil & Gas	TVD Reference:	RKB @ 8059.0usft (30')
Project:	Rio Blanco County, CO	MD Reference:	RKB @ 8059.0usft (30')
Site:	ELU A18 495 Pad	North Reference:	True
Well:	ELU A18 FED 13C-7 495	Survey Calculation Method:	Minimum Curvature
Wellbore:	Wellbore #1		
Design:	Design #2		

Planned Survey										
Measured Depth (usft)	Inclination (°)	Azimuth (°)	Vertical Depth (usft)	+N/-S (usft)	+E/-W (usft)	Vertical Section (usft)	Dogleg Rate (°/100usft)	Build Rate (°/100usft)	Turn Rate (°/100usft)	
0.0	0.00	0.00	0.0	0.0	0.0	0.0	0.00	0.00	0.00	
Build 3° / 100'										
100.0	0.00	0.00	100.0	0.0	0.0	0.0	0.00	0.00	0.00	
200.0	3.00	13.64	200.0	2.5	0.6	2.6	3.00	3.00	0.00	
300.0	6.00	13.64	299.6	10.2	2.5	10.5	3.00	3.00	0.00	
400.0	9.00	13.64	398.8	22.9	5.5	23.5	3.00	3.00	0.00	
500.0	12.00	13.64	497.1	40.6	9.8	41.7	3.00	3.00	0.00	
600.0	15.00	13.64	594.3	63.2	15.3	65.0	3.00	3.00	0.00	
700.0	18.00	13.64	690.2	90.8	22.0	93.4	3.00	3.00	0.00	
EOB @ 19.43° Inc. / 13.64° Azm										
747.6	19.43	13.64	735.2	105.7	25.6	108.7	3.00	3.00	0.00	
800.0	19.43	13.64	784.7	122.6	29.7	126.1	0.00	0.00	0.00	
900.0	19.43	13.64	879.0	154.9	37.6	159.4	0.00	0.00	0.00	
1,000.0	19.43	13.64	973.3	187.3	45.4	192.6	0.00	0.00	0.00	
1,100.0	19.43	13.64	1,067.6	219.6	53.3	225.9	0.00	0.00	0.00	
1,200.0	19.43	13.64	1,161.9	251.9	61.1	259.1	0.00	0.00	0.00	
1,300.0	19.43	13.64	1,256.2	284.2	69.0	292.3	0.00	0.00	0.00	
1,400.0	19.43	13.64	1,350.5	316.6	76.8	325.6	0.00	0.00	0.00	
1,500.0	19.43	13.64	1,444.8	348.9	84.6	358.8	0.00	0.00	0.00	
1,600.0	19.43	13.64	1,539.1	381.2	92.5	392.1	0.00	0.00	0.00	
1,700.0	19.43	13.64	1,633.4	413.5	100.3	425.3	0.00	0.00	0.00	
1,800.0	19.43	13.64	1,727.7	445.9	108.2	458.6	0.00	0.00	0.00	
1,900.0	19.43	13.64	1,822.0	478.2	116.0	491.8	0.00	0.00	0.00	
2,000.0	19.43	13.64	1,916.4	510.5	123.8	525.1	0.00	0.00	0.00	
2,100.0	19.43	13.64	2,010.7	542.8	131.7	558.3	0.00	0.00	0.00	
2,200.0	19.43	13.64	2,105.0	575.1	139.5	591.6	0.00	0.00	0.00	
2,300.0	19.43	13.64	2,199.3	607.5	147.4	624.8	0.00	0.00	0.00	
2,400.0	19.43	13.64	2,293.6	639.8	155.2	658.1	0.00	0.00	0.00	
2,500.0	19.43	13.64	2,387.9	672.1	163.0	691.3	0.00	0.00	0.00	
2,600.0	19.43	13.64	2,482.2	704.4	170.9	724.5	0.00	0.00	0.00	
2,700.0	19.43	13.64	2,576.5	736.8	178.7	757.8	0.00	0.00	0.00	
2,800.0	19.43	13.64	2,670.8	769.1	186.6	791.0	0.00	0.00	0.00	
2,900.0	19.43	13.64	2,765.1	801.4	194.4	824.3	0.00	0.00	0.00	
Wasatch										
2,937.0	19.43	13.64	2,800.0	813.4	197.3	836.6	0.00	0.00	0.00	
3,000.0	19.43	13.64	2,859.4	833.7	202.3	857.5	0.00	0.00	0.00	
3,100.0	19.43	13.64	2,953.7	866.1	210.1	890.8	0.00	0.00	0.00	
3,200.0	19.43	13.64	3,048.0	898.4	217.9	924.0	0.00	0.00	0.00	
3,300.0	19.43	13.64	3,142.3	930.7	225.8	957.3	0.00	0.00	0.00	
3,400.0	19.43	13.64	3,236.6	963.0	233.6	990.5	0.00	0.00	0.00	
3,500.0	19.43	13.64	3,331.0	995.3	241.5	1,023.8	0.00	0.00	0.00	
3,600.0	19.43	13.64	3,425.3	1,027.7	249.3	1,057.0	0.00	0.00	0.00	
3,700.0	19.43	13.64	3,519.6	1,060.0	257.1	1,090.3	0.00	0.00	0.00	
3,800.0	19.43	13.64	3,613.9	1,092.3	265.0	1,123.5	0.00	0.00	0.00	
3,900.0	19.43	13.64	3,708.2	1,124.6	272.8	1,156.7	0.00	0.00	0.00	
4,000.0	19.43	13.64	3,802.5	1,157.0	280.7	1,190.0	0.00	0.00	0.00	
4,100.0	19.43	13.64	3,896.8	1,189.3	288.5	1,223.2	0.00	0.00	0.00	
4,200.0	19.43	13.64	3,991.1	1,221.6	296.4	1,256.5	0.00	0.00	0.00	
4,300.0	19.43	13.64	4,085.4	1,253.9	304.2	1,289.7	0.00	0.00	0.00	
4,400.0	19.43	13.64	4,179.7	1,286.3	312.0	1,323.0	0.00	0.00	0.00	
4,500.0	19.43	13.64	4,274.0	1,318.6	319.9	1,356.2	0.00	0.00	0.00	
4,600.0	19.43	13.64	4,368.3	1,350.9	327.7	1,389.5	0.00	0.00	0.00	
4,700.0	19.43	13.64	4,462.6	1,383.2	335.6	1,422.7	0.00	0.00	0.00	

Database:	EDM 5000.1 Single User Db	Local Co-ordinate Reference:	Well ELU A18 FED 13C-7 495 - Slot 13C-7
Company:	Caerus Oil & Gas	TVD Reference:	RKB @ 8059.0usft (30')
Project:	Rio Blanco County, CO	MD Reference:	RKB @ 8059.0usft (30')
Site:	ELU A18 495 Pad	North Reference:	True
Well:	ELU A18 FED 13C-7 495	Survey Calculation Method:	Minimum Curvature
Wellbore:	Wellbore #1		
Design:	Design #2		

Planned Survey										
Measured Depth (usft)	Inclination (°)	Azimuth (°)	Vertical Depth (usft)	+N/-S (usft)	+E/-W (usft)	Vertical Section (usft)	Dogleg Rate (°/100usft)	Build Rate (°/100usft)	Turn Rate (°/100usft)	
4,800.0	19.43	13.64	4,556.9	1,415.6	343.4	1,456.0	0.00	0.00	0.00	
4,900.0	19.43	13.64	4,651.2	1,447.9	351.2	1,489.2	0.00	0.00	0.00	
5,000.0	19.43	13.64	4,745.6	1,480.2	359.1	1,522.5	0.00	0.00	0.00	
5,100.0	19.43	13.64	4,839.9	1,512.5	366.9	1,555.7	0.00	0.00	0.00	
5,200.0	19.43	13.64	4,934.2	1,544.8	374.8	1,588.9	0.00	0.00	0.00	
5,300.0	19.43	13.64	5,028.5	1,577.2	382.6	1,622.2	0.00	0.00	0.00	
5,400.0	19.43	13.64	5,122.8	1,609.5	390.4	1,655.4	0.00	0.00	0.00	
5,500.0	19.43	13.64	5,217.1	1,641.8	398.3	1,688.7	0.00	0.00	0.00	
5,600.0	19.43	13.64	5,311.4	1,674.1	406.1	1,721.9	0.00	0.00	0.00	
5,700.0	19.43	13.64	5,405.7	1,706.5	414.0	1,755.2	0.00	0.00	0.00	
5,800.0	19.43	13.64	5,500.0	1,738.8	421.8	1,788.4	0.00	0.00	0.00	
5,900.0	19.43	13.64	5,594.3	1,771.1	429.7	1,821.7	0.00	0.00	0.00	
6,000.0	19.43	13.64	5,688.6	1,803.4	437.5	1,854.9	0.00	0.00	0.00	
6,100.0	19.43	13.64	5,782.9	1,835.8	445.3	1,888.2	0.00	0.00	0.00	
6,200.0	19.43	13.64	5,877.2	1,868.1	453.2	1,921.4	0.00	0.00	0.00	
6,300.0	19.43	13.64	5,971.5	1,900.4	461.0	1,954.7	0.00	0.00	0.00	
6,400.0	19.43	13.64	6,065.8	1,932.7	468.9	1,987.9	0.00	0.00	0.00	
6,500.0	19.43	13.64	6,160.1	1,965.0	476.7	2,021.1	0.00	0.00	0.00	
6,600.0	19.43	13.64	6,254.5	1,997.4	484.5	2,054.4	0.00	0.00	0.00	
6,700.0	19.43	13.64	6,348.8	2,029.7	492.4	2,087.6	0.00	0.00	0.00	
6,800.0	19.43	13.64	6,443.1	2,062.0	500.2	2,120.9	0.00	0.00	0.00	
6,900.0	19.43	13.64	6,537.4	2,094.3	508.1	2,154.1	0.00	0.00	0.00	
7,000.0	19.43	13.64	6,631.7	2,126.7	515.9	2,187.4	0.00	0.00	0.00	
Wasatch G										
7,005.6	19.43	13.64	6,637.0	2,128.5	516.4	2,189.2	0.00	0.00	0.00	
7,100.0	19.43	13.64	6,726.0	2,159.0	523.8	2,220.6	0.00	0.00	0.00	
7,200.0	19.43	13.64	6,820.3	2,191.3	531.6	2,253.9	0.00	0.00	0.00	
7,300.0	19.43	13.64	6,914.6	2,223.6	539.4	2,287.1	0.00	0.00	0.00	
Fort Union										
7,323.8	19.43	13.64	6,937.0	2,231.3	541.3	2,295.0	0.00	0.00	0.00	
7,400.0	19.43	13.64	7,008.9	2,256.0	547.3	2,320.4	0.00	0.00	0.00	
7,500.0	19.43	13.64	7,103.2	2,288.3	555.1	2,353.6	0.00	0.00	0.00	
7,600.0	19.43	13.64	7,197.5	2,320.6	563.0	2,386.9	0.00	0.00	0.00	
7,700.0	19.43	13.64	7,291.8	2,352.9	570.8	2,420.1	0.00	0.00	0.00	
7,800.0	19.43	13.64	7,386.1	2,385.3	578.6	2,453.3	0.00	0.00	0.00	
7,900.0	19.43	13.64	7,480.4	2,417.6	586.5	2,486.6	0.00	0.00	0.00	
8,000.0	19.43	13.64	7,574.7	2,449.9	594.3	2,519.8	0.00	0.00	0.00	
8,100.0	19.43	13.64	7,669.1	2,482.2	602.2	2,553.1	0.00	0.00	0.00	
8,200.0	19.43	13.64	7,763.4	2,514.5	610.0	2,586.3	0.00	0.00	0.00	
8,300.0	19.43	13.64	7,857.7	2,546.9	617.8	2,619.6	0.00	0.00	0.00	
8,400.0	19.43	13.64	7,952.0	2,579.2	625.7	2,652.8	0.00	0.00	0.00	
8,500.0	19.43	13.64	8,046.3	2,611.5	633.5	2,686.1	0.00	0.00	0.00	
8,600.0	19.43	13.64	8,140.6	2,643.8	641.4	2,719.3	0.00	0.00	0.00	
Drop 3° /100'										
8,656.4	19.43	13.64	8,193.8	2,662.1	645.8	2,738.1	0.00	0.00	0.00	
8,700.0	18.12	13.64	8,235.1	2,675.7	649.1	2,752.1	3.00	-3.00	0.00	
8,800.0	15.12	13.64	8,330.9	2,703.5	655.8	2,780.7	3.00	-3.00	0.00	
8,900.0	12.12	13.64	8,428.0	2,726.4	661.4	2,804.2	3.00	-3.00	0.00	
9,000.0	9.12	13.64	8,526.3	2,744.3	665.7	2,822.6	3.00	-3.00	0.00	
9,100.0	6.12	13.64	8,625.4	2,757.2	668.9	2,835.9	3.00	-3.00	0.00	
9,200.0	3.12	13.64	8,725.1	2,765.0	670.8	2,843.9	3.00	-3.00	0.00	
EOD @ Vertical / Build 1.5° / 100' - Ohio Creek / TOG										
9,304.0	0.00	0.00	8,829.0	2,767.7	671.4	2,846.7	3.00	-3.00	0.00	
EOB @ 1.22° Inc. / 250.02° Azm										

Database:	EDM 5000.1 Single User Db	Local Co-ordinate Reference:	Well ELU A18 FED 13C-7 495 - Slot 13C-7
Company:	Caerus Oil & Gas	TVD Reference:	RKB @ 8059.0usft (30')
Project:	Rio Blanco County, CO	MD Reference:	RKB @ 8059.0usft (30')
Site:	ELU A18 495 Pad	North Reference:	True
Well:	ELU A18 FED 13C-7 495	Survey Calculation Method:	Minimum Curvature
Wellbore:	Wellbore #1		
Design:	Design #2		

Planned Survey										
Measured Depth (usft)	Inclination (°)	Azimuth (°)	Vertical Depth (usft)	+N/-S (usft)	+E/-W (usft)	Vertical Section (usft)	Dogleg Rate (°/100usft)	Build Rate (°/100usft)	Turn Rate (°/100usft)	
9,385.3	1.22	250.02	8,910.3	2,767.4	670.6	2,846.3	1.50	1.50	0.00	
9,400.0	1.22	250.02	8,925.0	2,767.3	670.3	2,846.1	0.00	0.00	0.00	
9,500.0	1.22	250.02	9,025.0	2,766.6	668.3	2,845.0	0.00	0.00	0.00	
9,600.0	1.22	250.02	9,125.0	2,765.9	666.3	2,843.9	0.00	0.00	0.00	
9,700.0	1.22	250.02	9,225.0	2,765.2	664.3	2,842.8	0.00	0.00	0.00	
9,800.0	1.22	250.02	9,324.9	2,764.4	662.3	2,841.6	0.00	0.00	0.00	
9,900.0	1.22	250.02	9,424.9	2,763.7	660.3	2,840.5	0.00	0.00	0.00	
Williams Fork										
9,905.1	1.22	250.02	9,430.0	2,763.7	660.2	2,840.4	0.00	0.00	0.00	
10,000.0	1.22	250.02	9,524.9	2,763.0	658.3	2,839.4	0.00	0.00	0.00	
10,100.0	1.22	250.02	9,624.9	2,762.2	656.3	2,838.3	0.00	0.00	0.00	
10,200.0	1.22	250.02	9,724.8	2,761.5	654.3	2,837.1	0.00	0.00	0.00	
10,300.0	1.22	250.02	9,824.8	2,760.8	652.3	2,836.0	0.00	0.00	0.00	
10,400.0	1.22	250.02	9,924.8	2,760.1	650.3	2,834.9	0.00	0.00	0.00	
10,500.0	1.22	250.02	10,024.8	2,759.3	648.3	2,833.7	0.00	0.00	0.00	
10,600.0	1.22	250.02	10,124.8	2,758.6	646.3	2,832.6	0.00	0.00	0.00	
10,700.0	1.22	250.02	10,224.7	2,757.9	644.3	2,831.5	0.00	0.00	0.00	
10,800.0	1.22	250.02	10,324.7	2,757.2	642.3	2,830.4	0.00	0.00	0.00	
10,900.0	1.22	250.02	10,424.7	2,756.4	640.3	2,829.2	0.00	0.00	0.00	
11,000.0	1.22	250.02	10,524.7	2,755.7	638.3	2,828.1	0.00	0.00	0.00	
11,100.0	1.22	250.02	10,624.6	2,755.0	636.3	2,827.0	0.00	0.00	0.00	
11,200.0	1.22	250.02	10,724.6	2,754.2	634.3	2,825.9	0.00	0.00	0.00	
11,300.0	1.22	250.02	10,824.6	2,753.5	632.3	2,824.7	0.00	0.00	0.00	
11,400.0	1.22	250.02	10,924.6	2,752.8	630.3	2,823.6	0.00	0.00	0.00	
11,500.0	1.22	250.02	11,024.6	2,752.1	628.3	2,822.5	0.00	0.00	0.00	
11,600.0	1.22	250.02	11,124.5	2,751.3	626.3	2,821.4	0.00	0.00	0.00	
11,700.0	1.22	250.02	11,224.5	2,750.6	624.3	2,820.2	0.00	0.00	0.00	
11,800.0	1.22	250.02	11,324.5	2,749.9	622.3	2,819.1	0.00	0.00	0.00	
11,900.0	1.22	250.02	11,424.5	2,749.2	620.3	2,818.0	0.00	0.00	0.00	
12,000.0	1.22	250.02	11,524.4	2,748.4	618.3	2,816.9	0.00	0.00	0.00	
12,100.0	1.22	250.02	11,624.4	2,747.7	616.3	2,815.7	0.00	0.00	0.00	
12,200.0	1.22	250.02	11,724.4	2,747.0	614.3	2,814.6	0.00	0.00	0.00	
12,300.0	1.22	250.02	11,824.4	2,746.2	612.3	2,813.5	0.00	0.00	0.00	
12,400.0	1.22	250.02	11,924.3	2,745.5	610.3	2,812.4	0.00	0.00	0.00	
12,500.0	1.22	250.02	12,024.3	2,744.8	608.3	2,811.2	0.00	0.00	0.00	
12,600.0	1.22	250.02	12,124.3	2,744.1	606.3	2,810.1	0.00	0.00	0.00	
12,700.0	1.22	250.02	12,224.3	2,743.3	604.3	2,809.0	0.00	0.00	0.00	
12,800.0	1.22	250.02	12,324.3	2,742.6	602.3	2,807.9	0.00	0.00	0.00	
12,900.0	1.22	250.02	12,424.2	2,741.9	600.3	2,806.7	0.00	0.00	0.00	
Cameo										
12,992.8	1.22	250.02	12,517.0	2,741.2	598.5	2,805.7	0.00	0.00	0.00	
13,000.0	1.22	250.02	12,524.2	2,741.2	598.3	2,805.6	0.00	0.00	0.00	
13,100.0	1.22	250.02	12,624.2	2,740.4	596.3	2,804.5	0.00	0.00	0.00	
13,200.0	1.22	250.02	12,724.2	2,739.7	594.3	2,803.4	0.00	0.00	0.00	
13,300.0	1.22	250.02	12,824.1	2,739.0	592.3	2,802.2	0.00	0.00	0.00	
13,400.0	1.22	250.02	12,924.1	2,738.2	590.3	2,801.1	0.00	0.00	0.00	
13,500.0	1.22	250.02	13,024.1	2,737.5	588.3	2,800.0	0.00	0.00	0.00	
Rollins										
13,542.9	1.22	250.02	13,067.0	2,737.2	587.5	2,799.5	0.00	0.00	0.00	
13,600.0	1.22	250.02	13,124.1	2,736.8	586.3	2,798.9	0.00	0.00	0.00	
13,700.0	1.22	250.02	13,224.1	2,736.1	584.3	2,797.7	0.00	0.00	0.00	
13,800.0	1.22	250.02	13,324.0	2,735.3	582.3	2,796.6	0.00	0.00	0.00	
13,900.0	1.22	250.02	13,424.0	2,734.6	580.3	2,795.5	0.00	0.00	0.00	

Database:	EDM 5000.1 Single User Db	Local Co-ordinate Reference:	Well ELU A18 FED 13C-7 495 - Slot 13C-7
Company:	Caerus Oil & Gas	TVD Reference:	RKB @ 8059.0usft (30')
Project:	Rio Blanco County, CO	MD Reference:	RKB @ 8059.0usft (30')
Site:	ELU A18 495 Pad	North Reference:	True
Well:	ELU A18 FED 13C-7 495	Survey Calculation Method:	Minimum Curvature
Wellbore:	Wellbore #1		
Design:	Design #2		

Planned Survey										
Measured Depth (usft)	Inclination (°)	Azimuth (°)	Vertical Depth (usft)	+N/-S (usft)	+E/-W (usft)	Vertical Section (usft)	Dogleg Rate (°/100usft)	Build Rate (°/100usft)	Turn Rate (°/100usft)	
14,000.0	1.22	250.02	13,524.0	2,733.9	578.3	2,794.4	0.00	0.00	0.00	
TD @ 14043.0' MD / 13567.0' TVD										
14,043.0	1.22	250.02	13,567.0	2,733.6	577.4	2,793.9	0.00	0.00	0.00	

Design Targets										
Target Name	Dip Angle (°)	Dip Dir. (°)	TVD (usft)	+N/-S (usft)	+E/-W (usft)	Northing (usft)	Easting (usft)	Latitude	Longitude	
13C-7 - OHCR - hit/miss target - plan hits target center - Shape - Point	0.00	0.00	8,829.0	2,767.7	671.4	14,436,076.39	2,455,427.33	39.716733	-108.102023	
13C-7 - PBHL - plan hits target center - Point	0.00	0.00	13,567.0	2,733.6	577.4	14,436,039.20	2,455,334.50	39.716639	-108.102357	

Formations						
Measured Depth (usft)	Vertical Depth (usft)	Name	Lithology	Dip (°)	Dip Direction (°)	
2,937.0	2,800.0	Wasatch				
7,005.6	6,637.0	Wasatch G				
7,323.8	6,937.0	Fort Union				
9,304.0	8,829.0	Ohio Creek / TOG				
9,905.1	9,430.0	Williams Fork				
12,992.8	12,517.0	Cameo				
13,542.9	13,067.0	Rollins				

Plan Annotations					
Measured Depth (usft)	Vertical Depth (usft)	+N/-S (usft)	+E/-W (usft)	Comment	
100.0	100.0	0.0	0.0	Build 3° / 100'	
747.6	735.2	105.7	25.6	EOB @ 19.43° Inc. / 13.64° Azm	
8,656.4	8,193.8	2,662.1	645.8	Drop 3° / 100'	
9,304.0	8,829.0	2,767.7	671.4	EOD @ Vertical / Build 1.5° / 100'	
9,385.3	8,910.3	2,767.4	670.6	EOB @ 1.22° Inc. / 250.02° Azm	
14,043.0	13,567.0	2,733.6	577.4	TD @ 14043.0' MD / 13567.0' TVD	