

Project: Rio Blanco County, CO  
Site: ELU A18 495 Pad  
Well: ELU A18 FED 11B-18 495  
Wellbore: Wellbore #1  
Design: Design #2  
Latitude: 39.709003  
Longitude: -108.103927  
Ground Level: 8029.0  
WELL @ 8059.0usft (30')

PROJECT DETAILS: Rio Blanco County, CO

Geodetic System: Universal Transverse Mercator (US Survey Feet)  
Datum: NAD 1927 - Western US  
Ellipsoid: Clarke 1866  
Zone: Zone 12N (114 W to 108 W)  
System Datum: Mean Sea Level

REFERENCE INFORMATION

Vertical (TVD) Reference: WELL @ 8059.0usft (30')  
Section (VS) Reference: Slot - 11B-18(0.0N, 0.0E)  
Measured Depth Reference: WELL @ 8059.0usft (30')  
Calculation Method: Minimum Curvature

FORMATION TOP DETAILS

TVDPPath	MDPath	Formation
2800.0	2802.4	Wasatch
6536.0	6552.7	Wasatch G
6836.0	6853.8	Fort Union
8706.0	8730.6	Ohio Creek / TOG
9292.0	9316.7	Williams Fork
12453.0	12478.4	Cameo
13003.0	13028.5	Rollins

SECTION DETAILS

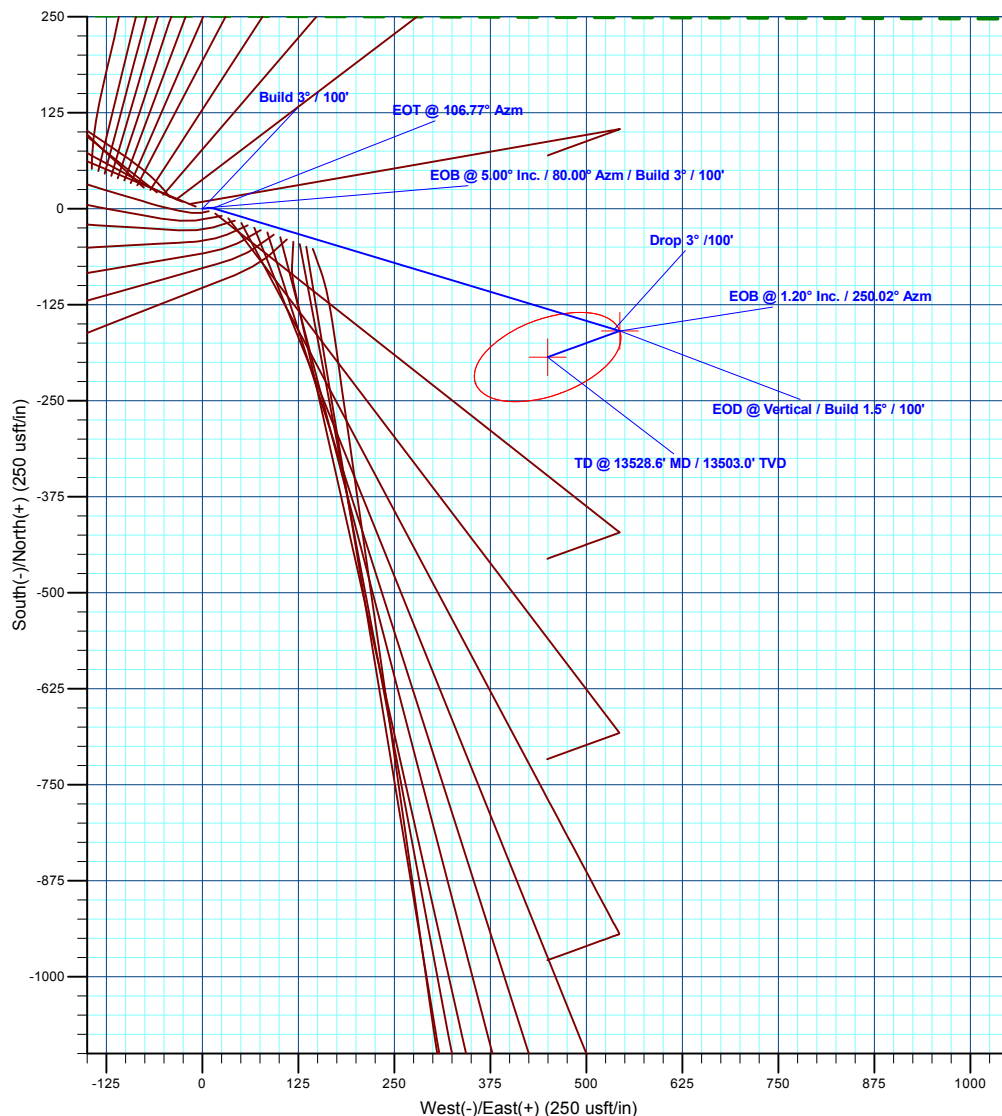
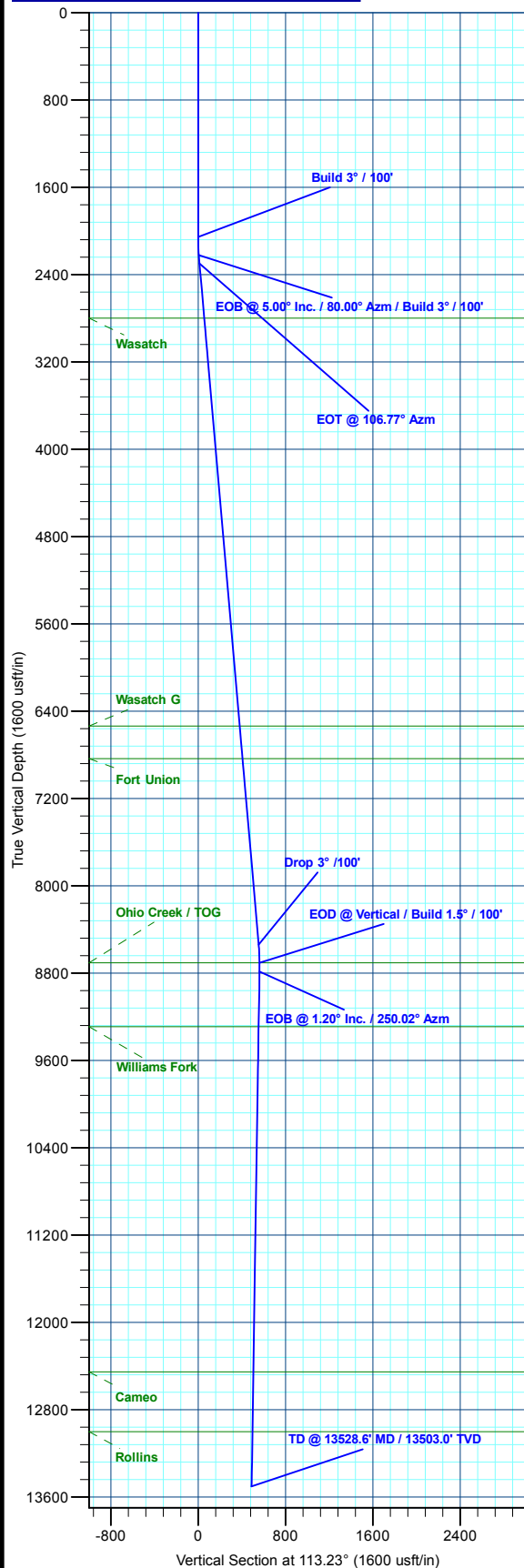
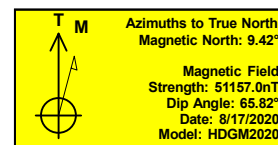
MD	Inc	Azi	TVD	+N/-S	+E/-W	Diag	TFace	Vsect	Annotation
0.0	0.00	0.00	0.0	0.0	0.0	0.00	0.00	0.0	Build 3° / 100'
2055.0	0.00	0.00	2055.0	0.0	0.0	0.00	0.00	0.0	EOB @ 5.00° Inc. / 80.00° Azm / Build 3° / 100'
2221.7	5.00	80.00	2221.5	1.3	7.2	3.00	80.00	6.1	EOT @ 106.77° Azm
2298.8	5.00	106.77	2298.3	0.9	13.7	3.00	103.30	12.2	Drop 3° / 100'
8563.8	5.00	106.77	8539.5	-156.7	536.7	0.00	0.00	555.0	EOD @ Vertical / Build 1.5° / 100'
8730.6	0.00	0.00	8706.0	-158.8	543.6	3.00	180.00	562.2	EOB @ 1.20° Inc. / 250.02° Azm
8810.9	1.20	250.02	8786.3	-159.1	542.8	1.50	250.02	561.6	TD @ 13528.6' MD / 13503.0' TVD
13528.6	1.20	250.02	13503.0	-193.0	449.6	0.00	0.00	489.3	

DESIGN TARGET DETAILS

Name	TVD	+N/-S	+E/-W	Northing	Easting	Latitude	Longitude
11B-18 - OHCR	8706.0	-158.8	543.6	14433102.59	2455531.03	39.708567	-108.101996
11B-18 - PBHL	13503.0	-193.0	449.6	14433065.40	2455438.20	39.708473	-108.102330

WELL DETAILS: ELU A18 FED 11B-18 495

	Ground Level : 8029.0				
+N/-S	0.0	+E/-W	0.0	Northing	14433243.78
				Easting	2454982.56
				Latitude	39.709003
				Longitude	-108.103927
					11B-18



Plan: Design #2 (ELU A18 FED 11B-18 495/Wellbore #1)

Created By: Will Jircik Date: 10:28, May 18 2022



## **Caerus Oil & Gas**

**Rio Blanco County, CO**

**ELU A18 495 Pad**

**ELU A18 FED 11B-18 495 - Slot 11B-18**

**Wellbore #1**

**Plan: Design #2**

## **KLX Well Planning Report**

**18 May, 2022**



<b>Database:</b>	EDM 5000.1 Single User Db	<b>Local Co-ordinate Reference:</b>	Well ELU A18 FED 11B-18 495 - Slot 11B-18
<b>Company:</b>	Caerus Oil & Gas	<b>TVD Reference:</b>	WELL @ 8059.0usft (30')
<b>Project:</b>	Rio Blanco County, CO	<b>MD Reference:</b>	WELL @ 8059.0usft (30')
<b>Site:</b>	ELU A18 495 Pad	<b>North Reference:</b>	True
<b>Well:</b>	ELU A18 FED 11B-18 495	<b>Survey Calculation Method:</b>	Minimum Curvature
<b>Wellbore:</b>	Wellbore #1		
<b>Design:</b>	Design #2		

<b>Project</b>	Rio Blanco County, CO		
<b>Map System:</b>	Universal Transverse Mercator (US Survey Fee	<b>System Datum:</b>	Mean Sea Level
<b>Geo Datum:</b>	NAD 1927 - Western US		
<b>Map Zone:</b>	Zone 12N (114 W to 108 W)		

Site		ELU A18 495 Pad				
Site Position:		Northing:	14,433,279.80 usft	Latitude:	39.709109	
From:	Map	Easting:	2,454,904.40 usft	Longitude:	-108.104201	
Position Uncertainty:		0.0 usft	Slot Radius:	13-3/16 "	Grid Convergence:	1.85 °

Well	ELU A18 FED 11B-18 495 - Slot 11B-18					
Well Position	+N/-S	-38.5 usft	Northing:	14,433,243.78 usft	Latitude:	39.709003
	+E/-W	77.0 usft	Easting:	2,454,982.56 usft	Longitude:	-108.103927
Position Uncertainty		0.0 usft	Wellhead Elevation:		Ground Level:	8,029.0 usft

<b>Wellbore</b>	Wellbore #1				
<b>Magnetics</b>	<b>Model Name</b>	<b>Sample Date</b>	<b>Declination (°)</b>	<b>Dip Angle (°)</b>	<b>Field Strength (nT)</b>
	HDGM2020	8/17/2020	9.42	65.82	51,157.00000000

<b>Design</b>	Design #2				
<b>Audit Notes:</b>					
<b>Version:</b>	<b>Phase:</b>	PLAN	<b>Tie On Depth:</b>	0.0	
<b>Vertical Section:</b>	<b>Depth From (TVD) (usft)</b>	<b>+N/-S (usft)</b>	<b>+E/-W (usft)</b>	<b>Direction (°)</b>	
	0.0	0.0	0.0	113.23	

Plan Sections										
Measured Depth (usft)	Inclination (°)	Azimuth (°)	Vertical Depth (usft)	+N/-S (usft)	+E/-W (usft)	Dogleg Rate (°/100usft)	Build Rate (°/100usft)	Turn Rate (°/100usft)	TFO (°)	Target
0.0	0.00	0.00	0.0	0.0	0.0	0.00	0.00	0.00	0.00	
2,055.0	0.00	0.00	2,055.0	0.0	0.0	0.00	0.00	0.00	0.00	
2,221.7	5.00	80.00	2,221.5	1.3	7.2	3.00	3.00	0.00	80.00	
2,298.8	5.00	106.77	2,298.3	0.9	13.7	3.00	0.00	34.73	103.30	
8,563.8	5.00	106.77	8,539.5	-156.7	536.7	0.00	0.00	0.00	0.00	
8,730.6	0.00	0.00	8,706.0	-158.8	543.6	3.00	-3.00	0.00	180.00	11B-18 - OHCR
8,810.9	1.20	250.02	8,786.3	-159.1	542.8	1.50	1.50	-136.98	250.02	
13,528.6	1.20	250.02	13,503.0	-193.0	449.6	0.00	0.00	0.00	0.00	11B-18 - PBHL

<b>Database:</b>	EDM 5000.1 Single User Db	<b>Local Co-ordinate Reference:</b>	Well ELU A18 FED 11B-18 495 - Slot 11B-18
<b>Company:</b>	Caerus Oil & Gas	<b>TVD Reference:</b>	WELL @ 8059.0usft (30')
<b>Project:</b>	Rio Blanco County, CO	<b>MD Reference:</b>	WELL @ 8059.0usft (30')
<b>Site:</b>	ELU A18 495 Pad	<b>North Reference:</b>	True
<b>Well:</b>	ELU A18 FED 11B-18 495	<b>Survey Calculation Method:</b>	Minimum Curvature
<b>Wellbore:</b>	Wellbore #1		
<b>Design:</b>	Design #2		

Planned Survey									
Measured Depth (usft)	Inclination (°)	Azimuth (°)	Vertical Depth (usft)	+N/-S (usft)	+E/-W (usft)	Vertical Section (usft)	Dogleg Rate (°/100usft)	Build Rate (°/100usft)	Turn Rate (°/100usft)
0.0	0.00	0.00	0.0	0.0	0.0	0.0	0.00	0.00	0.00
100.0	0.00	0.00	100.0	0.0	0.0	0.0	0.00	0.00	0.00
200.0	0.00	0.00	200.0	0.0	0.0	0.0	0.00	0.00	0.00
300.0	0.00	0.00	300.0	0.0	0.0	0.0	0.00	0.00	0.00
400.0	0.00	0.00	400.0	0.0	0.0	0.0	0.00	0.00	0.00
500.0	0.00	0.00	500.0	0.0	0.0	0.0	0.00	0.00	0.00
600.0	0.00	0.00	600.0	0.0	0.0	0.0	0.00	0.00	0.00
700.0	0.00	0.00	700.0	0.0	0.0	0.0	0.00	0.00	0.00
800.0	0.00	0.00	800.0	0.0	0.0	0.0	0.00	0.00	0.00
900.0	0.00	0.00	900.0	0.0	0.0	0.0	0.00	0.00	0.00
1,000.0	0.00	0.00	1,000.0	0.0	0.0	0.0	0.00	0.00	0.00
1,100.0	0.00	0.00	1,100.0	0.0	0.0	0.0	0.00	0.00	0.00
1,200.0	0.00	0.00	1,200.0	0.0	0.0	0.0	0.00	0.00	0.00
1,300.0	0.00	0.00	1,300.0	0.0	0.0	0.0	0.00	0.00	0.00
1,400.0	0.00	0.00	1,400.0	0.0	0.0	0.0	0.00	0.00	0.00
1,500.0	0.00	0.00	1,500.0	0.0	0.0	0.0	0.00	0.00	0.00
1,600.0	0.00	0.00	1,600.0	0.0	0.0	0.0	0.00	0.00	0.00
1,700.0	0.00	0.00	1,700.0	0.0	0.0	0.0	0.00	0.00	0.00
1,800.0	0.00	0.00	1,800.0	0.0	0.0	0.0	0.00	0.00	0.00
1,900.0	0.00	0.00	1,900.0	0.0	0.0	0.0	0.00	0.00	0.00
2,000.0	0.00	0.00	2,000.0	0.0	0.0	0.0	0.00	0.00	0.00
<b>Build 3° / 100'</b>									
2,055.0	0.00	0.00	2,055.0	0.0	0.0	0.0	0.00	0.00	0.00
2,100.0	1.35	80.00	2,100.0	0.1	0.5	0.4	3.00	3.00	0.00
2,200.0	4.35	80.00	2,199.9	1.0	5.4	4.6	3.00	3.00	0.00
<b>EOB @ 5.00° Inc. / 80.00° Azm / Build 3° / 100'</b>									
2,221.7	5.00	80.00	2,221.5	1.3	7.2	6.1	3.00	3.00	0.00
<b>EOT @ 106.77° Azm</b>									
2,298.8	5.00	106.77	2,298.3	0.9	13.7	12.2	3.00	0.00	34.73
2,300.0	5.00	106.77	2,299.5	0.8	13.8	12.3	0.00	0.00	0.00
2,400.0	5.00	106.77	2,399.1	-1.7	22.1	21.0	0.00	0.00	0.00
2,500.0	5.00	106.77	2,498.7	-4.2	30.5	29.7	0.00	0.00	0.00
2,600.0	5.00	106.77	2,598.4	-6.7	38.8	38.3	0.00	0.00	0.00
2,700.0	5.00	106.77	2,698.0	-9.2	47.2	47.0	0.00	0.00	0.00
2,800.0	5.00	106.77	2,797.6	-11.7	55.5	55.7	0.00	0.00	0.00
<b>Wasatch</b>									
2,802.4	5.00	106.77	2,800.0	-11.8	55.7	55.9	0.00	0.00	0.00
2,900.0	5.00	106.77	2,897.2	-14.3	63.9	64.3	0.00	0.00	0.00
3,000.0	5.00	106.77	2,996.8	-16.8	72.2	73.0	0.00	0.00	0.00
3,100.0	5.00	106.77	3,096.5	-19.3	80.6	81.6	0.00	0.00	0.00
3,200.0	5.00	106.77	3,196.1	-21.8	88.9	90.3	0.00	0.00	0.00
3,300.0	5.00	106.77	3,295.7	-24.3	97.3	99.0	0.00	0.00	0.00
3,400.0	5.00	106.77	3,395.3	-26.8	105.6	107.6	0.00	0.00	0.00
3,500.0	5.00	106.77	3,494.9	-29.3	114.0	116.3	0.00	0.00	0.00
3,600.0	5.00	106.77	3,594.6	-31.9	122.3	125.0	0.00	0.00	0.00
3,700.0	5.00	106.77	3,694.2	-34.4	130.7	133.6	0.00	0.00	0.00
3,800.0	5.00	106.77	3,793.8	-36.9	139.0	142.3	0.00	0.00	0.00
3,900.0	5.00	106.77	3,893.4	-39.4	147.3	150.9	0.00	0.00	0.00
4,000.0	5.00	106.77	3,993.0	-41.9	155.7	159.6	0.00	0.00	0.00
4,100.0	5.00	106.77	4,092.6	-44.4	164.0	168.3	0.00	0.00	0.00
4,200.0	5.00	106.77	4,192.3	-47.0	172.4	176.9	0.00	0.00	0.00
4,300.0	5.00	106.77	4,291.9	-49.5	180.7	185.6	0.00	0.00	0.00
4,400.0	5.00	106.77	4,391.5	-52.0	189.1	194.3	0.00	0.00	0.00
4,500.0	5.00	106.77	4,491.1	-54.5	197.4	202.9	0.00	0.00	0.00

<b>Database:</b>	EDM 5000.1 Single User Db	<b>Local Co-ordinate Reference:</b>	Well ELU A18 FED 11B-18 495 - Slot 11B-18
<b>Company:</b>	Caerus Oil & Gas	<b>TVD Reference:</b>	WELL @ 8059.0usft (30')
<b>Project:</b>	Rio Blanco County, CO	<b>MD Reference:</b>	WELL @ 8059.0usft (30')
<b>Site:</b>	ELU A18 495 Pad	<b>North Reference:</b>	True
<b>Well:</b>	ELU A18 FED 11B-18 495	<b>Survey Calculation Method:</b>	Minimum Curvature
<b>Wellbore:</b>	Wellbore #1		
<b>Design:</b>	Design #2		

Planned Survey									
Measured Depth (usft)	Inclination (°)	Azimuth (°)	Vertical Depth (usft)	+N/-S (usft)	+E/-W (usft)	Vertical Section (usft)	Dogleg Rate (°/100usft)	Build Rate (°/100usft)	Turn Rate (°/100usft)
4,600.0	5.00	106.77	4,590.7	-57.0	205.8	211.6	0.00	0.00	0.00
4,700.0	5.00	106.77	4,690.4	-59.5	214.1	220.2	0.00	0.00	0.00
4,800.0	5.00	106.77	4,790.0	-62.0	222.5	228.9	0.00	0.00	0.00
4,900.0	5.00	106.77	4,889.6	-64.6	230.8	237.6	0.00	0.00	0.00
5,000.0	5.00	106.77	4,989.2	-67.1	239.2	246.2	0.00	0.00	0.00
5,100.0	5.00	106.77	5,088.8	-69.6	247.5	254.9	0.00	0.00	0.00
5,200.0	5.00	106.77	5,188.5	-72.1	255.9	263.6	0.00	0.00	0.00
5,300.0	5.00	106.77	5,288.1	-74.6	264.2	272.2	0.00	0.00	0.00
5,400.0	5.00	106.77	5,387.7	-77.1	272.6	280.9	0.00	0.00	0.00
5,500.0	5.00	106.77	5,487.3	-79.7	280.9	289.6	0.00	0.00	0.00
5,600.0	5.00	106.77	5,586.9	-82.2	289.3	298.2	0.00	0.00	0.00
5,700.0	5.00	106.77	5,686.6	-84.7	297.6	306.9	0.00	0.00	0.00
5,800.0	5.00	106.77	5,786.2	-87.2	305.9	315.5	0.00	0.00	0.00
5,900.0	5.00	106.77	5,885.8	-89.7	314.3	324.2	0.00	0.00	0.00
6,000.0	5.00	106.77	5,985.4	-92.2	322.6	332.9	0.00	0.00	0.00
6,100.0	5.00	106.77	6,085.0	-94.8	331.0	341.5	0.00	0.00	0.00
6,200.0	5.00	106.77	6,184.7	-97.3	339.3	350.2	0.00	0.00	0.00
6,300.0	5.00	106.77	6,284.3	-99.8	347.7	358.9	0.00	0.00	0.00
6,400.0	5.00	106.77	6,383.9	-102.3	356.0	367.5	0.00	0.00	0.00
6,500.0	5.00	106.77	6,483.5	-104.8	364.4	376.2	0.00	0.00	0.00
<b>Wasatch G</b>									
6,552.7	5.00	106.77	6,536.0	-106.1	368.8	380.7	0.00	0.00	0.00
6,600.0	5.00	106.77	6,583.1	-107.3	372.7	384.8	0.00	0.00	0.00
6,700.0	5.00	106.77	6,682.7	-109.8	381.1	393.5	0.00	0.00	0.00
6,800.0	5.00	106.77	6,782.4	-112.4	389.4	402.2	0.00	0.00	0.00
<b>Fort Union</b>									
6,853.8	5.00	106.77	6,836.0	-113.7	393.9	406.8	0.00	0.00	0.00
6,900.0	5.00	106.77	6,882.0	-114.9	397.8	410.8	0.00	0.00	0.00
7,000.0	5.00	106.77	6,981.6	-117.4	406.1	419.5	0.00	0.00	0.00
7,100.0	5.00	106.77	7,081.2	-119.9	414.5	428.2	0.00	0.00	0.00
7,200.0	5.00	106.77	7,180.8	-122.4	422.8	436.8	0.00	0.00	0.00
7,300.0	5.00	106.77	7,280.5	-124.9	431.2	445.5	0.00	0.00	0.00
7,400.0	5.00	106.77	7,380.1	-127.5	439.5	454.1	0.00	0.00	0.00
7,500.0	5.00	106.77	7,479.7	-130.0	447.9	462.8	0.00	0.00	0.00
7,600.0	5.00	106.77	7,579.3	-132.5	456.2	471.5	0.00	0.00	0.00
7,700.0	5.00	106.77	7,678.9	-135.0	464.5	480.1	0.00	0.00	0.00
7,800.0	5.00	106.77	7,778.6	-137.5	472.9	488.8	0.00	0.00	0.00
7,900.0	5.00	106.77	7,878.2	-140.0	481.2	497.5	0.00	0.00	0.00
8,000.0	5.00	106.77	7,977.8	-142.6	489.6	506.1	0.00	0.00	0.00
8,100.0	5.00	106.77	8,077.4	-145.1	497.9	514.8	0.00	0.00	0.00
8,200.0	5.00	106.77	8,177.0	-147.6	506.3	523.5	0.00	0.00	0.00
8,300.0	5.00	106.77	8,276.7	-150.1	514.6	532.1	0.00	0.00	0.00
8,400.0	5.00	106.77	8,376.3	-152.6	523.0	540.8	0.00	0.00	0.00
8,500.0	5.00	106.77	8,475.9	-155.1	531.3	549.4	0.00	0.00	0.00
<b>Drop 3° /100'</b>									
8,563.8	5.00	106.77	8,539.5	-156.7	536.7	555.0	0.00	0.00	0.00
8,600.0	3.92	106.77	8,575.5	-157.5	539.4	557.8	3.00	-3.00	0.00
8,700.0	0.92	106.77	8,675.4	-158.8	543.4	562.0	3.00	-3.00	0.00
<b>EOD @ Vertical / Build 1.5° / 100' - Ohio Creek / TOG</b>									
8,730.6	0.00	0.00	8,706.0	-158.8	543.6	562.2	3.00	-3.00	0.00
8,800.0	1.04	250.02	8,775.4	-159.1	543.0	561.7	1.50	1.50	0.00
<b>EOB @ 1.20° Inc. / 250.02° Azm</b>									
8,810.9	1.20	250.02	8,786.3	-159.1	542.8	561.6	1.50	1.50	0.00

<b>Database:</b>	EDM 5000.1 Single User Db	<b>Local Co-ordinate Reference:</b>	Well ELU A18 FED 11B-18 495 - Slot 11B-18
<b>Company:</b>	Caerus Oil & Gas	<b>TVD Reference:</b>	WELL @ 8059.0usft (30')
<b>Project:</b>	Rio Blanco County, CO	<b>MD Reference:</b>	WELL @ 8059.0usft (30')
<b>Site:</b>	ELU A18 495 Pad	<b>North Reference:</b>	True
<b>Well:</b>	ELU A18 FED 11B-18 495	<b>Survey Calculation Method:</b>	Minimum Curvature
<b>Wellbore:</b>	Wellbore #1		
<b>Design:</b>	Design #2		

Planned Survey									
Measured Depth (usft)	Inclination (°)	Azimuth (°)	Vertical Depth (usft)	+N/-S (usft)	+E/-W (usft)	Vertical Section (usft)	Dogleg Rate (°/100usft)	Build Rate (°/100usft)	Turn Rate (°/100usft)
8,900.0	1.20	250.02	8,875.4	-159.8	541.1	560.2	0.00	0.00	0.00
9,000.0	1.20	250.02	8,975.4	-160.5	539.1	558.7	0.00	0.00	0.00
9,100.0	1.20	250.02	9,075.4	-161.2	537.1	557.2	0.00	0.00	0.00
9,200.0	1.20	250.02	9,175.3	-161.9	535.1	555.6	0.00	0.00	0.00
9,300.0	1.20	250.02	9,275.3	-162.6	533.2	554.1	0.00	0.00	0.00
<b>Williams Fork</b>									
9,316.7	1.20	250.02	9,292.0	-162.8	532.8	553.8	0.00	0.00	0.00
9,400.0	1.20	250.02	9,375.3	-163.4	531.2	552.6	0.00	0.00	0.00
9,500.0	1.20	250.02	9,475.3	-164.1	529.2	551.0	0.00	0.00	0.00
9,600.0	1.20	250.02	9,575.3	-164.8	527.2	549.5	0.00	0.00	0.00
9,700.0	1.20	250.02	9,675.2	-165.5	525.3	548.0	0.00	0.00	0.00
9,800.0	1.20	250.02	9,775.2	-166.2	523.3	546.4	0.00	0.00	0.00
9,900.0	1.20	250.02	9,875.2	-166.9	521.3	544.9	0.00	0.00	0.00
10,000.0	1.20	250.02	9,975.2	-167.7	519.3	543.4	0.00	0.00	0.00
10,100.0	1.20	250.02	10,075.1	-168.4	517.4	541.8	0.00	0.00	0.00
10,200.0	1.20	250.02	10,175.1	-169.1	515.4	540.3	0.00	0.00	0.00
10,300.0	1.20	250.02	10,275.1	-169.8	513.4	538.8	0.00	0.00	0.00
10,400.0	1.20	250.02	10,375.1	-170.5	511.4	537.2	0.00	0.00	0.00
10,500.0	1.20	250.02	10,475.1	-171.3	509.5	535.7	0.00	0.00	0.00
10,600.0	1.20	250.02	10,575.0	-172.0	507.5	534.2	0.00	0.00	0.00
10,700.0	1.20	250.02	10,675.0	-172.7	505.5	532.6	0.00	0.00	0.00
10,800.0	1.20	250.02	10,775.0	-173.4	503.5	531.1	0.00	0.00	0.00
10,900.0	1.20	250.02	10,875.0	-174.1	501.6	529.6	0.00	0.00	0.00
11,000.0	1.20	250.02	10,974.9	-174.8	499.6	528.0	0.00	0.00	0.00
11,100.0	1.20	250.02	11,074.9	-175.6	497.6	526.5	0.00	0.00	0.00
11,200.0	1.20	250.02	11,174.9	-176.3	495.6	525.0	0.00	0.00	0.00
11,300.0	1.20	250.02	11,274.9	-177.0	493.7	523.5	0.00	0.00	0.00
11,400.0	1.20	250.02	11,374.9	-177.7	491.7	521.9	0.00	0.00	0.00
11,500.0	1.20	250.02	11,474.8	-178.4	489.7	520.4	0.00	0.00	0.00
11,600.0	1.20	250.02	11,574.8	-179.2	487.7	518.9	0.00	0.00	0.00
11,700.0	1.20	250.02	11,674.8	-179.9	485.8	517.3	0.00	0.00	0.00
11,800.0	1.20	250.02	11,774.8	-180.6	483.8	515.8	0.00	0.00	0.00
11,900.0	1.20	250.02	11,874.7	-181.3	481.8	514.3	0.00	0.00	0.00
12,000.0	1.20	250.02	11,974.7	-182.0	479.8	512.7	0.00	0.00	0.00
12,100.0	1.20	250.02	12,074.7	-182.7	477.9	511.2	0.00	0.00	0.00
12,200.0	1.20	250.02	12,174.7	-183.5	475.9	509.7	0.00	0.00	0.00
12,300.0	1.20	250.02	12,274.7	-184.2	473.9	508.1	0.00	0.00	0.00
12,400.0	1.20	250.02	12,374.6	-184.9	471.9	506.6	0.00	0.00	0.00
<b>Cameo</b>									
12,478.4	1.20	250.02	12,453.0	-185.5	470.4	505.4	0.00	0.00	0.00
12,500.0	1.20	250.02	12,474.6	-185.6	470.0	505.1	0.00	0.00	0.00
12,600.0	1.20	250.02	12,574.6	-186.3	468.0	503.5	0.00	0.00	0.00
12,700.0	1.20	250.02	12,674.6	-187.1	466.0	502.0	0.00	0.00	0.00
12,800.0	1.20	250.02	12,774.6	-187.8	464.0	500.5	0.00	0.00	0.00
12,900.0	1.20	250.02	12,874.5	-188.5	462.1	498.9	0.00	0.00	0.00
13,000.0	1.20	250.02	12,974.5	-189.2	460.1	497.4	0.00	0.00	0.00
<b>Rollins</b>									
13,028.5	1.20	250.02	13,003.0	-189.4	459.5	497.0	0.00	0.00	0.00
13,100.0	1.20	250.02	13,074.5	-189.9	458.1	495.9	0.00	0.00	0.00
13,200.0	1.20	250.02	13,174.5	-190.6	456.1	494.3	0.00	0.00	0.00
13,300.0	1.20	250.02	13,274.4	-191.4	454.2	492.8	0.00	0.00	0.00
13,400.0	1.20	250.02	13,374.4	-192.1	452.2	491.3	0.00	0.00	0.00
13,500.0	1.20	250.02	13,474.4	-192.8	450.2	489.8	0.00	0.00	0.00

<b>Database:</b>	EDM 5000.1 Single User Db	<b>Local Co-ordinate Reference:</b>	Well ELU A18 FED 11B-18 495 - Slot 11B-18
<b>Company:</b>	Caerus Oil & Gas	<b>TVD Reference:</b>	WELL @ 8059.0usft (30')
<b>Project:</b>	Rio Blanco County, CO	<b>MD Reference:</b>	WELL @ 8059.0usft (30')
<b>Site:</b>	ELU A18 495 Pad	<b>North Reference:</b>	True
<b>Well:</b>	ELU A18 FED 11B-18 495	<b>Survey Calculation Method:</b>	Minimum Curvature
<b>Wellbore:</b>	Wellbore #1		
<b>Design:</b>	Design #2		

Planned Survey									
Measured Depth (usft)	Inclination (°)	Azimuth (°)	Vertical Depth (usft)	+N/-S (usft)	+E/-W (usft)	Vertical Section (usft)	Dogleg Rate (°/100usft)	Build Rate (°/100usft)	Turn Rate (°/100usft)
TD @ 13528.6' MD / 13503.0' TVD									
13,528.6	1.20	250.02	13,503.0	-193.0	449.6	489.3	0.00	0.00	0.00

Design Targets									
Target Name - hit/miss target - Shape	Dip Angle (°)	Dip Dir. (°)	TVD (usft)	+N/-S (usft)	+E/-W (usft)	Northing (usft)	Easting (usft)	Latitude	Longitude
11B-18 - OHCR - plan hits target center - Point	0.00	0.00	8,706.0	-158.8	543.6	14,433,102.59	2,455,531.03	39.708567	-108.101996
11B-18 - PBHL - plan hits target center - Point	0.00	0.00	13,503.0	-193.0	449.6	14,433,065.40	2,455,438.20	39.708473	-108.102330

Formations						
Measured Depth (usft)	Vertical Depth (usft)	Name	Lithology	Dip (°)	Dip Direction (°)	
2,802.4	2,800.0	Wasatch				
6,552.7	6,536.0	Wasatch G				
6,853.8	6,836.0	Fort Union				
8,730.6	8,706.0	Ohio Creek / TOG				
9,316.7	9,292.0	Williams Fork				
12,478.4	12,453.0	Cameo				
13,028.5	13,003.0	Rollins				

Plan Annotations				
Measured Depth (usft)	Vertical Depth (usft)	Local Coordinates		Comment
		+N/-S (usft)	+E/-W (usft)	
2,055.0	2,055.0	0.0	0.0	Build 3° / 100'
2,221.7	2,221.5	1.3	7.2	EOB @ 5.00° Inc. / 80.00° Azm / Build 3° / 100'
2,298.8	2,298.3	0.9	13.7	EOT @ 106.77° Azm
8,563.8	8,539.5	-156.7	536.7	Drop 3° / 100'
8,730.6	8,706.0	-158.8	543.6	EOD @ Vertical / Build 1.5° / 100'
8,810.9	8,786.3	-159.1	542.8	EOB @ 1.20° Inc. / 250.02° Azm
13,528.6	13,503.0	-193.0	449.6	TD @ 13528.6' MD / 13503.0' TVD