



# Verdad Resources



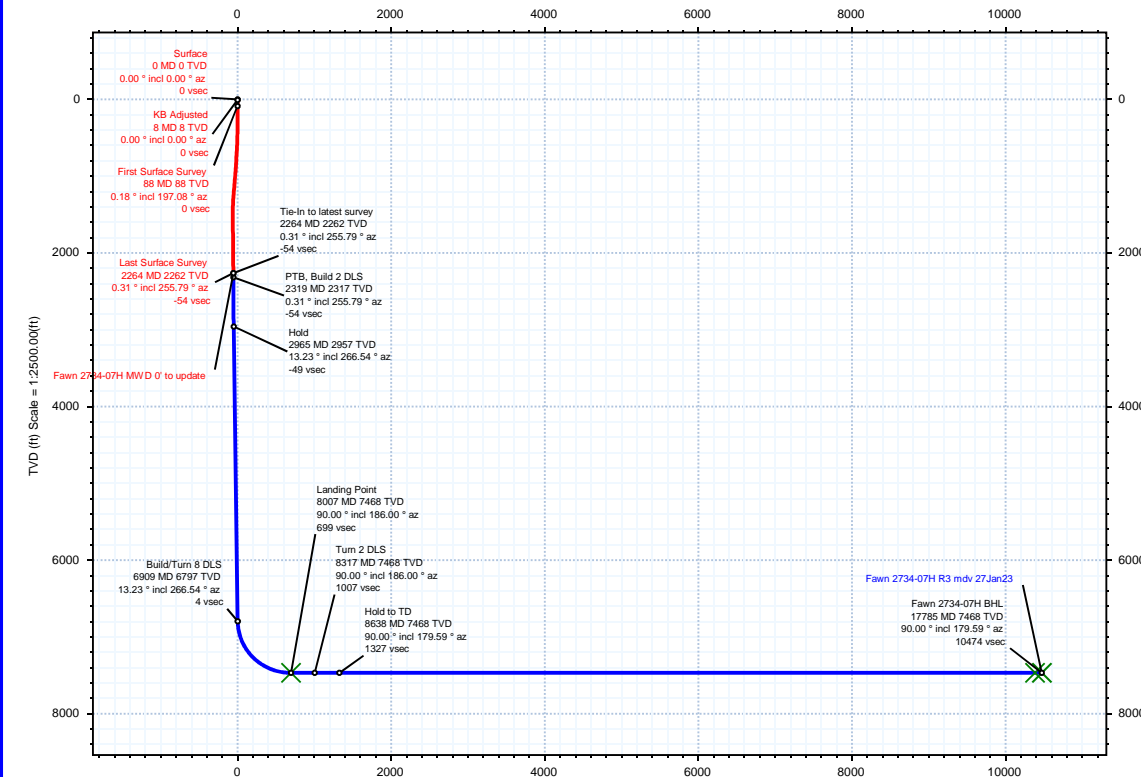
Rev 3

Borehole:	Well:	Field:	Structure:
Fawn 2734-07H	Fawn 2734-07H	CO, Weld County (NAD 83 NZ) - 2019	Verdad Resources 22-01N-65W (Fawn 2833-2734 Pad)

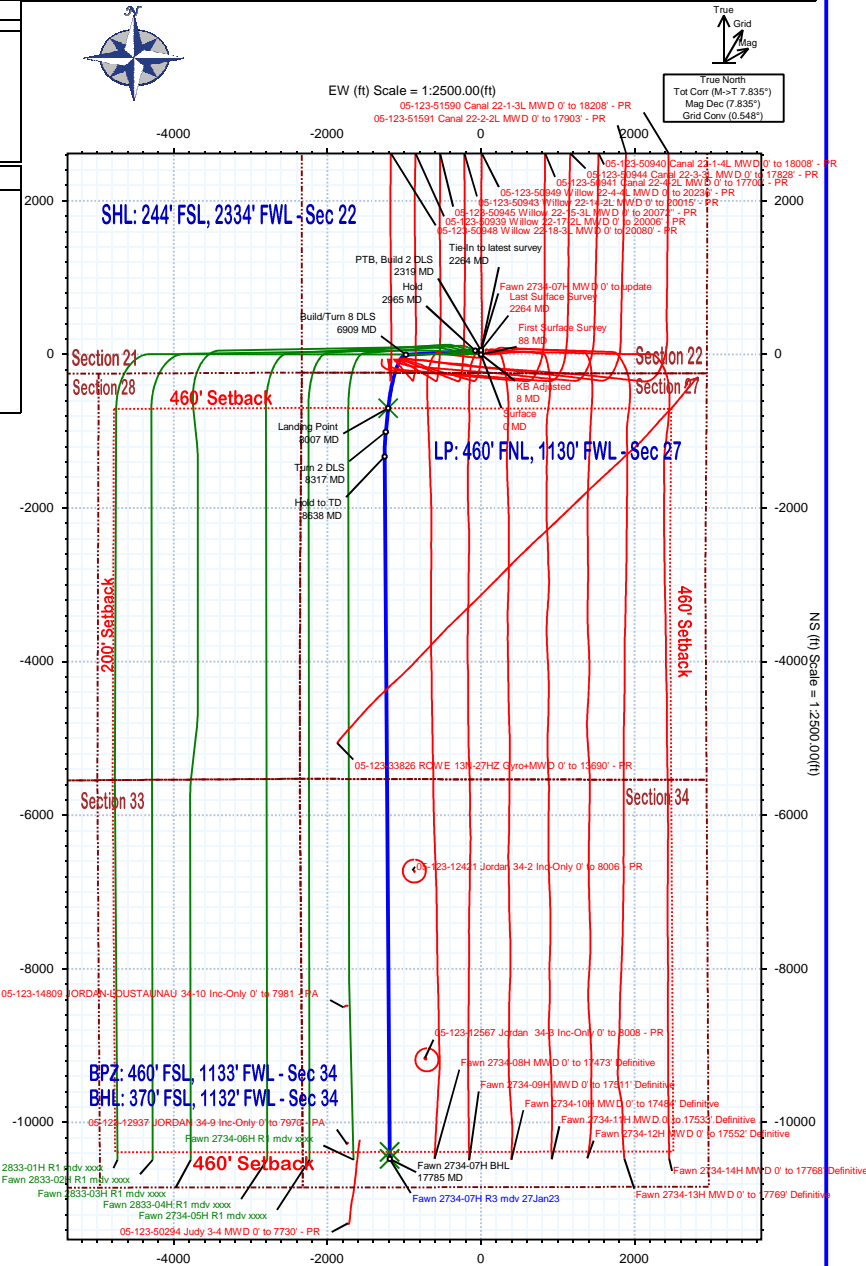
Gravity & Magnetic Parameters	Surface Location	Miscellaneous
Model: HDGM 2023 Dip: 66.21° Date: 27-Jan-2023	NAD83 Colorado State Plane, Northern Zone, US Feet	Slot: Fawn 2734-07H TVD Ref: 21ft KB(5125ft above MSL)
MagDec: 7.835° FS: 51542.081nT Gravity FS: 998.985mg (9.80665 Based)	Lat: N 40 1 49.17 Northing: 1255030.79ftUS Grid Conv: 0.5484°	Plan: Fawn 2734-07H R3 mdy 27Jan23
	Lon: W 104 39 4.51 Easting: 3237669.91ftUS Scale Fact: 0.99996421	

Target Name	Target Description	Northing	Eastings	Surface Location	Grid Coord	Existing	Longitud	VSec	N(+)/S(-)	E(+)/W(-)	Local Coord
05-123-12267	Jordan 34-3 - 150'R circle	N 40 0 18.39	W 104 39 13.57	1245838.66	3237053.02	-1000.00	9184.91	-9186.16	-704.87	-704.87	-704.87
05-123-12421	Jordan 34-2 - 150'R circle	N 40 0 42.88	W 104 39 15.89	1245235.10	3236895.15	-1000.00	6726.41	-6727.94	-869.23	-869.23	-869.23
Fawn 2833-2733	Sec 34-01N-65W	N 40 1 49.17	W 104 39 5.75	1255030.14	3237573.91	-1000.00	5125.00	-5125.00	-96.01	-96.01	-96.01
Fawn 2833-2733	Sec 27-01N-65W	N 40 1 49.17	W 104 39 5.75	1255030.14	3237573.91	-1000.00	5125.00	-5125.00	-96.01	-96.01	-96.01
Fawn 2833-2733	Sec 33-01N-65W	N 40 1 49.17	W 104 39 5.75	1255030.14	3237573.91	-1000.00	5125.00	-5125.00	-96.01	-96.01	-96.01
Fawn 2833-2733	Sec 28-01N-65W	N 40 1 49.17	W 104 39 5.75	1255030.14	3237573.91	-1000.00	5125.00	-5125.00	-96.01	-96.01	-96.01
Fawn 2833-2733	Sec 28-01N-65W	N 40 1 49.17	W 104 39 5.75	1255030.14	3237573.91	-1000.00	5125.00	-5125.00	-96.01	-96.01	-96.01
Fawn 2734-07H	BHL	N 40 0 5.84	W 104 39 19.80	1244544.01	3236579.35	-1000.00	10474.17	-10474.17	-1189.91	-1189.91	-1189.91
Fawn 2734-07H	BPZ	N 40 0 6.53	W 104 39 19.81	1244534.00	3236579.35	-1000.00	10384.18	-10386.27	-1190.07	-1190.07	-1190.07

Critical Point	MD	INCL	AZIM	TVD	VSEC	N(+)/S(-)	E(+)/W(-)	DLS
Tie-In to latest survey	2264.00	0.31	255.79	2261.78	-54.18	54.18	-1.03	0.00
PTB, Build 2 DLS	2319.00	0.31	255.79	2316.78	-54.10	54.10	-1.32	0.00
Hold	2965.16	13.23	266.54	2957.08	-49.32	49.19	-77.13	2.00
Build/Turn 8 DLS	6909.28	13.23	266.54	6796.56	3.63	-5.33	-977.97	0.00
Landing Point	8007.33	90.00	186.00	7468.00	698.72	-700.83	-1207.61	8.00
Turn 2 DLS	8317.33	90.00	186.00	7468.00	1006.97	-1009.13	-1240.01	0.00
Hold to TD	8637.91	90.00	179.59	7468.00	1326.98	-1329.17	-1255.63	2.00
Fawn 2734-07H BHL	17785.25	90.00	179.59	7468.00	10474.17	-10476.27	-1189.91	0.00



Vertical Section (ft) Azim = 179.90° Scale = 1:2500.00(ft) Origin = 0N/-S, 0E/-W





## Fawn 2734-07H R3 mdv 27Jan23 Proposal Geodetic Report



(Def Plan)

**Report Date:** January 27, 2023 - 12:00 PM  
**Client:** Verdax Resources  
**Field:** CO, Weld County (NAD 83 NZ) - 2019  
**Structure / Slot:** Verdax Resources 22-01N-65W (Fawn 2833-2734 Pad) / Fawn 2734-07H  
**Well:** Fawn 2734-07H  
**Borehole:** Fawn 2734-07H  
**UWI / API#:** Unknown / 05-123-51844  
**Survey Name:** Fawn 2734-07H R3 mdv 27Jan23  
**Survey Date:** January 27, 2023  
**Tort / AHD / DDI / ERD Ratio:** 125.184 ° / 11583.441 ft / 6.538 / 1.551  
**Coordinate Reference System:** NAD83 Colorado State Plane, Northern Zone, US Feet  
**Location Lat / Long:** N 40° 1' 49.16909", W 104° 39' 4.51400"  
**Location Grid N/E Y/X:** N 1255030.790 ftUS, E 3237669.910 ftUS  
**CRS Grid Convergence Angle:** 0.5484 °  
**Grid Scale Factor:** 0.99996421  
**Version / Patch:** 2.10.834.0

**Survey / DLS Computation:** Minimum Curvature / Lubinski  
**Vertical Section Azimuth:** 179.900 ° (True North)  
**Vertical Section Origin:** 0.000 ft, 0.000 ft  
**TVD Reference Datum:** 21ft KB  
**TVD Reference Elevation:** 5125.000 ft above MSL  
**Seabed / Ground Elevation:** 5104.000 ft above MSL  
**Magnetic Declination:** 7.835 °  
**Total Gravity Field Strength:** 998.9848mgn (9.80665 Based)  
**Gravity Model:** GARM  
**Total Magnetic Field Strength:** 51542.081 nT  
**Magnetic Dip Angle:** 66.210 °  
**Declination Date:** January 27, 2023  
**Magnetic Declination Model:** HDGM 2023  
**North Reference:** True North  
**Grid Convergence Used:** 0.0000 °  
**Total Corr Mag North->True North:** 7.8345 °  
**Local Coord Referenced To:** Well Head

Comments	MD (ft)	Incl (°)	Azim True (°)	TVD (ft)	TVDSS (ft)	VSEC (ft)	NS (ft)	EW (ft)	DLS (°/100ft)	Northing (ftUS)	Easting (ftUS)	Latitude (°)	Longitude (°)
Surface	0.00	0.00	0.00	0.00	-5125.00	0.00	0.00	0.00	N/A	1255030.79	3237669.91	40.030325	-104.651254
KB Adjusted	8.00	0.00	0.00	8.00	-5117.00	0.00	0.00	0.00	0.00	1255030.79	3237669.91	40.030325	-104.651254
First Surface Survey	88.00	0.18	197.08	88.00	-5037.00	0.12	-0.12	-0.04	0.23	1255030.67	3237669.87	40.030324	-104.651254
	179.00	0.09	259.92	179.00	-4946.00	0.27	-0.27	-0.15	0.18	1255030.52	3237669.76	40.030324	-104.651254
	271.00	0.04	137.31	271.00	-4854.00	0.31	-0.31	-0.20	0.13	1255030.48	3237669.71	40.030324	-104.651255
	362.00	0.35	277.85	362.00	-4763.00	0.29	-0.29	-0.45	0.42	1255030.49	3237669.46	40.030324	-104.651256
	452.00	0.83	350.89	451.99	-4673.01	-0.39	0.39	-0.83	0.89	1255031.17	3237669.08	40.030326	-104.651257
	541.00	1.41	9.34	540.98	-4584.02	-2.11	2.11	-0.75	0.76	1255032.89	3237669.14	40.030331	-104.651257
	631.00	3.60	19.01	630.89	-4494.11	-5.87	5.87	0.35	2.47	1255036.66	3237670.20	40.030341	-104.651253
	722.00	3.78	27.54	721.70	-4403.30	-11.23	11.23	2.67	0.63	1255042.05	3237672.47	40.030356	-104.651244
	812.00	4.22	21.82	811.48	-4313.52	-16.93	16.94	5.27	0.66	1255047.78	3237675.02	40.030371	-104.651235
	902.00	4.00	10.14	901.25	-4223.75	-23.09	23.10	7.05	0.96	1255053.96	3237676.74	40.030388	-104.651229
	992.00	4.44	7.50	991.01	-4133.99	-29.63	29.65	8.06	0.53	1255060.51	3237677.68	40.030406	-104.651225
	1082.00	4.88	5.21	1080.71	-4044.29	-36.90	36.91	8.86	0.56	1255067.78	3237678.42	40.030426	-104.651222
	1172.00	4.75	357.48	1170.39	-3954.61	-44.43	44.45	9.04	0.73	1255075.32	3237678.53	40.030447	-104.651222
	1262.00	4.97	353.26	1260.07	-3864.93	-52.03	52.04	8.42	0.47	1255082.91	3237677.83	40.030468	-104.651224
	1352.00	2.24	338.14	1349.88	-3775.12	-57.53	57.55	7.31	3.19	1255088.40	3237676.67	40.030483	-104.651228
	1442.00	0.92	297.01	1439.85	-3685.15	-69.50	59.51	6.01	1.85	1255090.35	3237675.35	40.030488	-104.651232
	1532.00	0.48	300.17	1529.84	-3595.16	-60.02	60.02	5.04	0.49	1255090.86	3237674.38	40.030490	-104.651236
	1622.00	0.70	216.06	1619.84	-3505.16	-59.76	59.77	4.39	0.90	1255090.60	3237673.73	40.030489	-104.651238
	1712.00	0.88	230.13	1709.83	-3415.17	-58.88	58.88	3.54	0.29	1255089.70	3237672.89	40.030486	-104.651241
	1802.00	0.66	234.87	1799.82	-3325.18	-58.14	58.14	2.58	0.25	1255088.95	3237671.94	40.030484	-104.651245
	1892.00	0.97	241.46	1889.81	-3235.19	-57.48	57.48	1.49	0.36	1255088.28	3237670.85	40.030483	-104.651249
	1982.00	0.22	217.29	1979.81	-3145.19	-56.98	56.98	0.72	0.86	1255087.77	3237670.08	40.030481	-104.651251
	2072.00	1.14	209.82	2069.80	-3055.20	-56.06	56.06	0.17	1.02	1255086.85	3237669.54	40.030479	-104.651253
	2162.00	0.75	207.10	2159.79	-2965.21	-54.76	54.76	-0.55	0.44	1255085.54	3237668.84	40.030475	-104.651256
	2252.00	0.22	253.94	2249.78	-2875.22	-54.19	54.19	-0.98	0.69	1255084.97	3237668.41	40.030474	-104.651257
Tie-In to latest survey	2264.00	0.31	255.79	2261.78	-2863.22	-54.18	54.18	-1.03	0.75	1255084.95	3237668.36	40.030473	-104.651258
	2300.00	0.31	255.79	2297.78	-2827.22	-54.13	54.13	-1.22	0.00	1255084.90	3237668.17	40.030473	-104.651258
PTB, Build 2 DLS	2319.00	0.31	255.79	2316.78	-2808.22	-54.10	54.10	-1.32	0.00	1255084.88	3237668.07	40.030473	-104.651259
	2400.00	1.93	265.03	2397.77	-2727.23	-53.94	53.93	-2.89	2.00	1255084.69	3237666.50	40.030473	-104.651262
	2500.00	3.92	265.93	2497.63	-2627.37	-53.56	53.54	-7.98	2.00	1255084.25	3237661.42	40.030472	-104.651282
	2600.00	5.92	266.22	2597.26	-2527.74	-52.99	52.96	-16.54	2.00	1255083.59	3237652.86	40.030470	-104.651313
	2700.00	7.92	266.36	2696.52	-2428.48	-52.23	52.18	-28.57	2.00	1255082.69	3237640.84	40.030468	-104.651356
	2800.00	9.92	266.45	2795.31	-2329.69	-51.29	51.21	-44.05	2.00	1255081.57	3237625.37	40.030465	-104.651411
	2900.00	11.92	266.51	2893.49	-2231.51	-50.16	50.05	-62.97	2.00	1255080.23	3237606.47	40.030462	-104.651479
	2965.16	13.23	266.54	2957.08	-2167.92	-49.32	49.19	-77.13	2.00	1255079.23	3237592.32	40.030460	-104.651529
	3000.00	13.23	266.54	2991.00	-2134.00	-48.85	48.70	-85.09	0.00	1255078.68	3237584.36	40.030458	-104.651558
	3100.00	13.23	266.54	3088.35	-2036.65	-47.51	47.32	-107.93	0.00	1255077.08	3237561.54	40.030455	-104.651639
	3200.00	13.23	266.54	3185.69	-1939.31	-46.17	45.94	-130.77	0.00	1255075.47	3237538.71	40.030451	-104.651721
	3300.00	13.23	266.54	3283.04	-1841.96	-44.83	44.56	-153.61	0.00	1255073.87	3237515.89	40.030447	-104.651802
	3400.00	13.23	266.54	3380.39	-1744.61	-43.48	43.18	-176.45	0.00	1255072.27	3237493.06	40.030443	-104.651884
	3500.00	13.23	266.54	3477.73	-1647.27	-42.14	41.79	-199.29	0.00	1255070.67	3237470.24	40.030439	-104.651966
	3600.00	13.23	266.54	3575.08	-1549.92	-40.80	40.41	-222.13	0.00	1255069.07	3237447.41	40.030436	-104.652047
	3700.00	13.23	266.54	3672.43	-1452.57	-39.46	39.03	-244.97	0.00	1255067.47	3237424.59	40.030432	-104.652129
	3800.00	13.23	266.54	3769.77	-1355.23	-38.11	37.65	-267.81	0.00	1255065.87	3237401.76	40.030428	-104.652210
	3900.00	13.23	266.54	3867.12	-1257.88	-36.77	36.26	-290.65	0.00	1255064.27	3237378.94	40.030424	-104.652292
	4000.00	13.23	266.54	3964.47	-1160.53	-35.43	34.88	-313.49	0.00	1255062.67	3237356.11	40.030420	-104.652373
	4100.00	13.23	266.54	4061.82	-1063.18	-34.09	33.50	-336.33	0.00	1255061.07	3237333.29	40.030417	-104.652455
	4200.00	13.23	266.54	4159.16	-965.84	-32.74	32.12	-359.17	0.00	1255059.47	3237310.46	40.030413	-104.652536
	4300.00	13.23	266.54	4256.51	-868.49	-31.40	30.73	-382.01	0.00	1255057.87	3237287.64	40.030409	-104.652618
	4400.00	13.23	266.54	4353.86	-771.14	-30.06	29.35	-404.85	0.00	1255056.27	3237264.81	40.030405	-104.652700
	4500.00	13.23	266.54	4451.20	-673.80	-28.72	27.97	-427.69	0.00	1255054.66	3237241.99	40.030402	-104.652781
	4600.00	13.23	266.54	4548.55	-576.45	-27.37	26.59	-450.53	0.00	1255053.06	3237219.16	40.030398	-104.652863
	4700.00	13.23	266.54	4645.90	-479.10	-26.03	25.21	-473.37	0.00	1255051.46	3237196.34	40.030394	-104.652944
	4800.00	13.23	266.54	4743.24	-381.76	-24.69	23.82	-496.21	0.00	1255049.86	3237173.51	40.030390	-104.653026
	4900.00	13.23	266.54	4840.59	-284.41	-23.35	22.44	-519.05	0.00	1255048.26	3237150.69	40.030386	-104.653107
	5000.00	13.23	266.54	4937.94	-187.06	-22.00	21.06	-541.89	0.00	1255046.66	3237127.86	40.030383	-104.653189
	5100.00	13.23	266.54	5035.28	-89.72	-20.66	19.68	-564.73	0.00	1255045.06	3237105.04	40.030379	-104.653271
	5200.00	13.23	266.54	5132.63	7.63	-19.32	18.29	-587.57	0.00	1255043.46	3237082.21	40.030375	-104.653352
	5300.00	13.23	266.54	5229.98	104.98	-17.98	16.91	-610.41	0.00	1255041.86	3237059.39	40.030371	-104.653434
	5400.00	13.23	266.54	5327.32	202.32	-16.63	15.53	-633.25	0.00	1255040.26	3237036.56	40.030367	-104.653515
	5500.00	13.23	266.54	5424.67	299.67	-15.29	14.15	-656.09	0.00	1255038.66	3237013.74	40.030364	-104.653597
	5600.00	13.23	266.54	5522.02	397.02	-13.95	12.76	-678.93	0.00	1255037.06	3236990.91	40.030360	-104.653678
	5700.00	13.23	266.54	5619.37	494.37	-12.61	11.38	-701.77	0.00	1255035.45	3236968.09	40.030356	-104.653760
	5800.00	13.23	266.54	5716.71	591.71	-11.26	10.00	-724.61	0.00	1255033.85	3236945.26	40.030352	-104.653841
	5900.00	13.23	266.54	5814.06	689.06	-9.92	8.62	-747.45	0.00	1255032.25	3236922.44	40.030348	-104.653923
	6000.00	13.23	266.54	5911.41	786.41	-8.58	7.24	-770.29	0.00	1255030.65	3236899.61	40.030345	-104.654005
	6100.00	13.23	266.54	6008.75	883.75	-7.24	5.85	-793.13	0.00	1			

Comments	MD (ft)	Incl (°)	Azim True (°)	TVD (ft)	TVDSS (ft)	VSEC (ft)	NS (ft)	EW (ft)	DLS (°/100ft)	Northing (ftUS)	Easting (ftUS)	Latitude (°)	Longitude (°)
Landing Point	7500.00	50.67	196.95	7300.16	2175.16	239.54	-241.50	-1120.20	8.00	1254778.59	3236552.11	40.029662	-104.655254
	7600.00	58.36	194.22	7358.17	2233.17	317.89	-319.89	-1141.97	8.00	1254700.00	3236531.10	40.029447	-104.655332
	7700.00	66.09	191.90	7404.75	2279.75	403.99	-406.02	-1161.88	8.00	1254613.69	3236512.02	40.029210	-104.655403
	7800.00	73.85	189.85	7438.97	2313.97	496.15	-498.21	-1179.55	8.00	1254521.33	3236495.23	40.028957	-104.655466
	7900.00	81.64	187.95	7460.18	2335.18	592.60	-594.68	-1194.63	8.00	1254424.72	3236481.07	40.028692	-104.655520
	8000.00	89.43	186.13	7467.96	2342.96	691.44	-693.55	-1206.84	8.00	1254325.75	3236469.81	40.028421	-104.655563
	8007.33	90.00	186.00	7468.00	2343.00	698.72	-700.83	-1207.61	8.00	1254318.46	3236469.11	40.028401	-104.655566
	8100.00	90.00	186.00	7468.00	2343.00	790.87	-793.00	-1217.30	0.00	1254226.21	3236460.30	40.028148	-104.655601
	8200.00	90.00	186.00	7468.00	2343.00	890.31	-892.45	-1227.75	0.00	1254126.66	3236450.80	40.027875	-104.655638
	8300.00	90.00	186.00	7468.00	2343.00	989.74	-991.90	-1238.20	0.00	1254027.12	3236441.30	40.027602	-104.655675
Turn 2 DLS	8317.33	90.00	186.00	7468.00	2343.00	1006.97	-1009.13	-1240.01	0.00	1254009.87	3236439.66	40.027555	-104.655682
	8400.00	90.00	184.35	7468.00	2343.00	1089.29	-1091.47	-1247.47	2.00	1253927.47	3236432.99	40.027329	-104.655708
Hold to TD	8500.00	90.00	182.35	7468.00	2343.00	1189.10	-1191.29	-1253.31	2.00	1253827.60	3236428.11	40.027054	-104.655729
	8600.00	90.00	180.35	7468.00	2343.00	1289.07	-1291.26	-1255.66	2.00	1253727.62	3236426.72	40.026780	-104.655738
	8637.91	90.00	179.59	7468.00	2343.00	1326.98	-1329.17	-1255.63	2.00	1253689.71	3236427.10	40.026676	-104.655737
	8700.00	90.00	179.59	7468.00	2343.00	1389.06	-1391.26	-1255.19	0.00	1253627.64	3236428.14	40.026506	-104.655736
	8800.00	90.00	179.59	7468.00	2343.00	1489.06	-1491.25	-1254.77	0.00	1253527.65	3236429.82	40.026231	-104.655733
	8900.00	90.00	179.59	7468.00	2343.00	1589.06	-1591.25	-1253.75	0.00	1253427.67	3236431.49	40.025957	-104.655731
	9000.00	90.00	179.59	7468.00	2343.00	1689.06	-1691.25	-1253.03	0.00	1253327.69	3236433.17	40.025682	-104.655728
	9100.00	90.00	179.59	7468.00	2343.00	1789.06	-1791.25	-1252.31	0.00	1253227.71	3236434.85	40.025408	-104.655725
	9200.00	90.00	179.59	7468.00	2343.00	1889.06	-1891.24	-1251.59	0.00	1253127.73	3236436.52	40.025133	-104.655723
	9300.00	90.00	179.59	7468.00	2343.00	1989.06	-1991.24	-1250.88	0.00	1253027.74	3236438.20	40.024859	-104.655720
	9400.00	90.00	179.59	7468.00	2343.00	2089.05	-2091.24	-1250.16	0.00	1252927.76	3236439.87	40.024584	-104.655718
	9500.00	90.00	179.59	7468.00	2343.00	2189.05	-2191.24	-1249.44	0.00	1252827.78	3236441.55	40.024310	-104.655715
	9600.00	90.00	179.59	7468.00	2343.00	2289.05	-2291.23	-1248.72	0.00	1252727.80	3236443.22	40.024035	-104.655713
	9700.00	90.00	179.59	7468.00	2343.00	2389.05	-2391.23	-1248.00	0.00	1252627.81	3236444.90	40.023761	-104.655710
	9800.00	90.00	179.59	7468.00	2343.00	2489.05	-2491.23	-1247.28	0.00	1252527.83	3236446.57	40.023486	-104.655707
	9900.00	90.00	179.59	7468.00	2343.00	2589.05	-2591.23	-1246.56	0.00	1252427.85	3236448.25	40.023212	-104.655705
	10000.00	90.00	179.59	7468.00	2343.00	2689.04	-2691.22	-1245.85	0.00	1252327.87	3236449.93	40.022937	-104.655702
	10100.00	90.00	179.59	7468.00	2343.00	2789.04	-2791.22	-1245.13	0.00	1252227.89	3236451.60	40.022663	-104.655700
	10200.00	90.00	179.59	7468.00	2343.00	2889.04	-2891.22	-1244.41	0.00	1252127.90	3236453.28	40.022388	-104.655697
	10300.00	90.00	179.59	7468.00	2343.00	2989.04	-2991.22	-1243.69	0.00	1252027.92	3236454.95	40.022114	-104.655694
	10400.00	90.00	179.59	7468.00	2343.00	3089.04	-3091.21	-1242.97	0.00	1251927.94	3236456.63	40.021839	-104.655692
	10500.00	90.00	179.59	7468.00	2343.00	3189.04	-3191.21	-1242.25	0.00	1251827.96	3236458.30	40.021565	-104.655689
	10600.00	90.00	179.59	7468.00	2343.00	3289.04	-3291.21	-1241.54	0.00	1251727.97	3236459.98	40.021290	-104.655687
	10700.00	90.00	179.59	7468.00	2343.00	3389.03	-3391.21	-1240.82	0.00	1251627.99	3236461.65	40.021016	-104.655684
	10800.00	90.00	179.59	7468.00	2343.00	3489.03	-3491.20	-1240.10	0.00	1251528.01	3236463.33	40.020741	-104.655682
	10900.00	90.00	179.59	7468.00	2343.00	3589.03	-3591.20	-1239.38	0.00	1251428.03	3236465.01	40.020467	-104.655679
	11000.00	90.00	179.59	7468.00	2343.00	3689.03	-3691.20	-1238.66	0.00	1251328.05	3236466.68	40.020192	-104.655676
	11100.00	90.00	179.59	7468.00	2343.00	3789.03	-3791.19	-1237.94	0.00	1251228.06	3236468.36	40.019918	-104.655674
	11200.00	90.00	179.59	7468.00	2343.00	3889.03	-3891.19	-1237.22	0.00	1251128.08	3236470.03	40.019643	-104.655671
	11300.00	90.00	179.59	7468.00	2343.00	3989.03	-3991.19	-1236.51	0.00	1251028.10	3236471.71	40.019369	-104.655669
	11400.00	90.00	179.59	7468.00	2343.00	4089.02	-4091.19	-1235.79	0.00	1250928.12	3236473.38	40.019094	-104.655666
	11500.00	90.00	179.59	7468.00	2343.00	4189.02	-4191.18	-1235.07	0.00	1250828.14	3236475.06	40.018820	-104.655663
	11600.00	90.00	179.59	7468.00	2343.00	4289.02	-4291.18	-1234.35	0.00	1250728.15	3236476.73	40.018545	-104.655661
	11700.00	90.00	179.59	7468.00	2343.00	4389.02	-4391.18	-1233.63	0.00	1250628.17	3236478.41	40.018271	-104.655658
	11800.00	90.00	179.59	7468.00	2343.00	4489.02	-4491.18	-1232.91	0.00	1250528.19	3236480.08	40.017996	-104.655656
	11900.00	90.00	179.59	7468.00	2343.00	4589.02	-4591.17	-1232.19	0.00	1250428.21	3236481.76	40.017722	-104.655653
	12000.00	90.00	179.59	7468.00	2343.00	4689.02	-4691.17	-1231.48	0.00	1250328.22	3236483.44	40.017447	-104.655651
	12100.00	90.00	179.59	7468.00	2343.00	4789.01	-4791.17	-1230.76	0.00	1250228.24	3236485.11	40.017173	-104.655648
	12200.00	90.00	179.59	7468.00	2343.00	4889.01	-4891.17	-1230.04	0.00	1250128.26	3236486.79	40.016898	-104.655645
	12300.00	90.00	179.59	7468.00	2343.00	4989.01	-4991.16	-1229.32	0.00	1250028.28	3236488.46	40.016624	-104.655643
	12400.00	90.00	179.59	7468.00	2343.00	5089.01	-5091.16	-1228.60	0.00	1249928.30	3236490.14	40.016349	-104.655640
	12500.00	90.00	179.59	7468.00	2343.00	5189.01	-5191.16	-1227.88	0.00	1249828.31	3236491.81	40.016075	-104.655638
	12600.00	90.00	179.59	7468.00	2343.00	5289.01	-5291.16	-1227.16	0.00	1249728.33	3236493.49	40.015800	-104.655635
	12700.00	90.00	179.59	7468.00	2343.00	5389.00	-5391.15	-1226.45	0.00	1249628.35	3236495.16	40.015526	-104.655632
	12800.00	90.00	179.59	7468.00	2343.00	5489.00	-5491.15	-1225.73	0.00	1249528.37	3236496.84	40.015251	-104.655630
	12900.00	90.00	179.59	7468.00	2343.00	5589.00	-5591.15	-1225.01	0.00	1249428.38	3236498.52	40.014977	-104.655627
	13000.00	90.00	179.59	7468.00	2343.00	5689.00	-5691.15	-1224.29	0.00	1249328.40	3236500.19	40.014702	-104.655625
	13100.00	90.00	179.59	7468.00	2343.00	5789.00	-5791.14	-1223.57	0.00	1249228.42	3236501.87	40.014428	-104.655622
	13200.00	90.00	179.59	7468.00	2343.00	5889.00	-5891.14	-1222.85	0.00	1249128.44	3236503.54	40.014153	-104.655620
	13300.00	90.00	179.59	7468.00	2343.00	58							

Comments	MD (ft)	Incl (°)	Azim True (°)	TVD (ft)	TVDSS (ft)	VSEC (ft)	NS (ft)	EW (ft)	DLS (°/100ft)	Northing (ftUS)	Easting (ftUS)	Latitude (°)	Longitude (°)
Description	Part	MD From (ft)	MD To (ft)	EOU Freq (ft)	Hole Size	Casing Diameter (in)	Expected Max Inclination (deg)	Survey Tool Type	Borehole / Survey				
	1	0.000	21.000	Act Stns	13.500	9.625		A001Mb_MWD-Depth Only	Fawn 2734-07H / Fawn 2734-07H MWD 0' to update				
	1	21.000	2264.000	Act Stns	13.500	9.625		A001Mb_MWD	Fawn 2734-07H / Fawn 2734-07H MWD 0' to update				
	1	2264.000	17785.245	1/100.000	8.500	5.500		B001Mb_MWD+HRGM	Fawn 2734-07H / Fawn 2734-07H R3 mdv 27Jan23				