



02433700

RECEIVED

MAR 5 1987

Lease BERTHA PylesWell No. 1Location CSWSW SECTION 10-T19S-R45W

COLO. OIL & GAS CONS. COMM.

County KIOWAState COLORADOK. B. Elev. 3984'Date Completed 4-15-67G. L. Elev. 3917'Formation (s) MississippiDistance "H" 7'Initial Production Oil 340 B/D

Pump (X) Flow () Water B/D

Other Gas MCF/D

Initial Treatments

4-67: PERFED @ 4788'-98', 4760'-70', 4707'-10',
4693'-96', & 84'-88'. ACIDIZED W/ 1000 GALS 15% C
4-14 BPM. SWD 2 1/2 BOPH. ACIDIZED W/ 12,500
GALS 15% W/ 24 BALLSEALERS. MAX. TP = 26000#
AIR = 38 BPM. SWD 227 1/2 BOPH. 8 1/2 HRS.

PERFED @ 4539'-43', 56'-60', 73'-80', 4609'-19', &
4634'-46'. ACIDIZED W/ 1000 GALS 15% MCA @
12 BPM. SWD 154 BOPH. 5 HRS. ACIDIZED W/
15000 GALS 15% GELLED ACID. MAX. TP = 17000#
@ 64 1/2 BPM. SWD 217 BOPH. 6 HRS.

7-16-79: CASING LEAK. TRIED TO PULL TBG, NO GO.
SHOT TBG OFF @ 1830'. WASHINGTON PIPE CO. W/NT
GET BELOW 1926'. HOLE WOULD FILL OVERNIGHT
WITH ANHYDRITE AND SHALE. TAG 720-79.

4-71: CASING LEAK. REPAIRED LEAK @ 1250'. CMT
VOLUMES WERE NOT REPORTED IN FILE. POP.

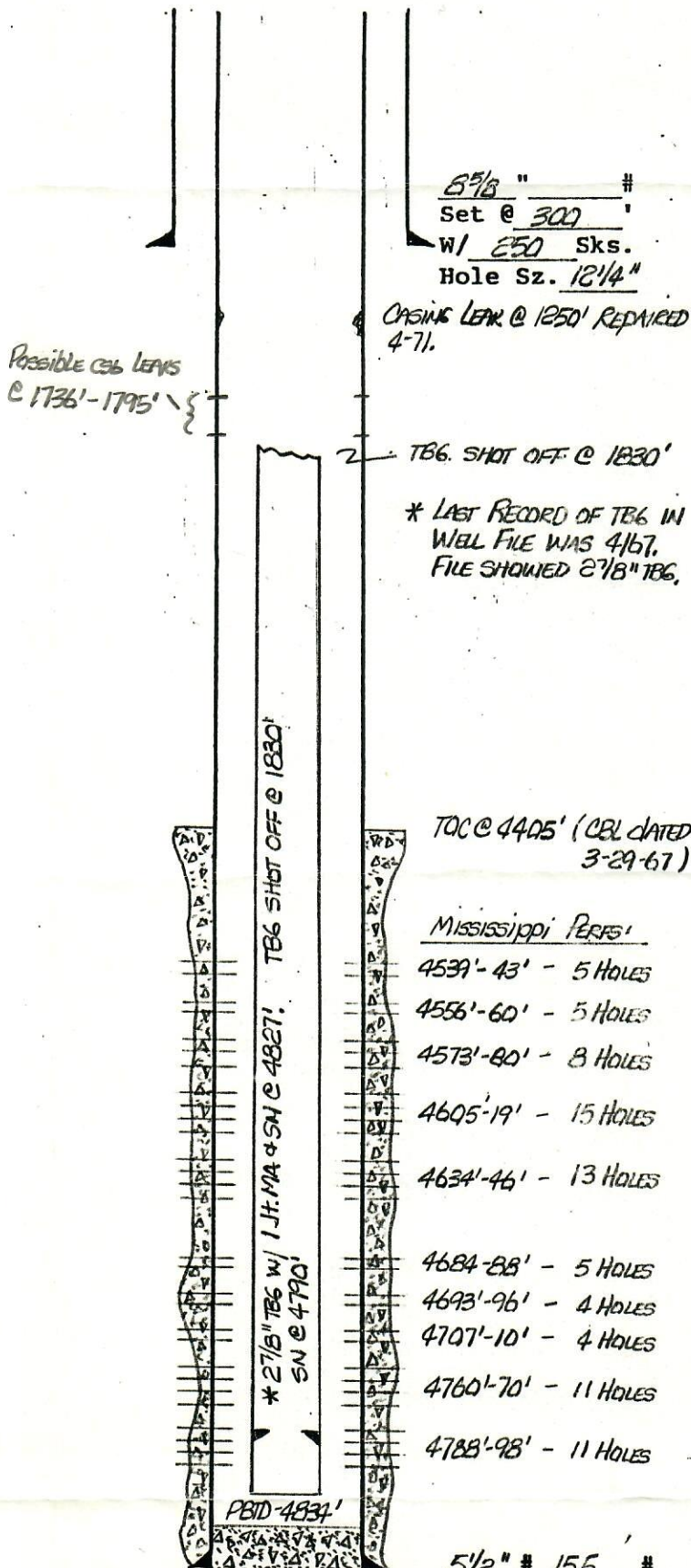
Present Production Oil B/D

Pump () Flow () Water B/D

Other Gas MCF/D

Present Producing Equipment

Proposed Work

Prepared by BEEDate 11-18-85LEASE & WELL NO. BERTHA Pyles No. 1

5 7/8" #
Set @ 300'
W/ 250 Sks.
Hole Sz. 12 1/4"

CASING LEAK @ 1250' REPAIRED
4-71.

TBG. SHOT OFF @ 1830'

* LAST RECORD OF TBG IN
WELL FILE WAS 4167.
FILE SHOWED 27 1/8" TBG.

TOC @ 4405' (CBL DATED
3-29-67)

Mississippi Perfs'

4539'-43' - 5 HOLES

4556'-60' - 5 HOLES

4573'-80' - 8 HOLES

4605'-19' - 15 HOLES

4634'-46' - 13 HOLES

4684'-88' - 5 HOLES

4693'-96' - 4 HOLES

4707'-10' - 4 HOLES

4760'-70' - 11 HOLES

4788'-98' - 11 HOLES

5 1/2" # 155 #

GR. J-55 Thd. STAG

Set @ 4827'

W/ 100 Sks.

Hole Sz. 7 1/8"

Total Depth 4850'

JUL 23 1979