

Tank Battery Closure Checklist

Additional Attachments (Optional)

Site Name & COGCC Facility Number	Seltzer Farm-61S67W / 3SENW
Remediation Project #	24010

Site Information

General Condition of Site	Good condition
USCS Soil Type	Clay / Clay
Estimated Depth to Groundwater	<20'
Hydrocarbon Impacted Soils / Spills	Hydrocarbon impacted soil identified at PW-B01@5' via laboratory analysis.
Salt Crusted Soils or Impacted Vegetation	None observed

Tanks			
#	PID Readings	Sample Taken?	Sample ID #
R1	0.5	Yes	AST-B01@2'
R2	0.6	Yes	AST-B02@2'
R3	6.4	Yes	PW-B01@5'
R4	1.7	Yes	PW-N01@2.5'
R5	1.3	Yes	PW-S01@2.5'
R6	1.4	Yes	PW-E01@2.5'
R7	1.2	Yes	PW-W01@2.5'
R8	1.3	Yes	PW-B02@7'
R9	1.3	Yes	PW-N02@5'
R10	1.4	Yes	PW-S02@5'
R11	1.1	Yes	PW-E02@5'
R12	0.9	Yes	PW-W02@5'
R13	0.8	Yes	PW-B03@9'
R14	1.8	Yes	PW-N03@7'
R15	1.1	Yes	PW-S03@7'
R16	1.8	Yes	PW-E03@7'
R17	1.6	Yes	PW-W03@7'
R18	0.7	Yes	PW-W04@7'

Photo(s)

R1 - P1



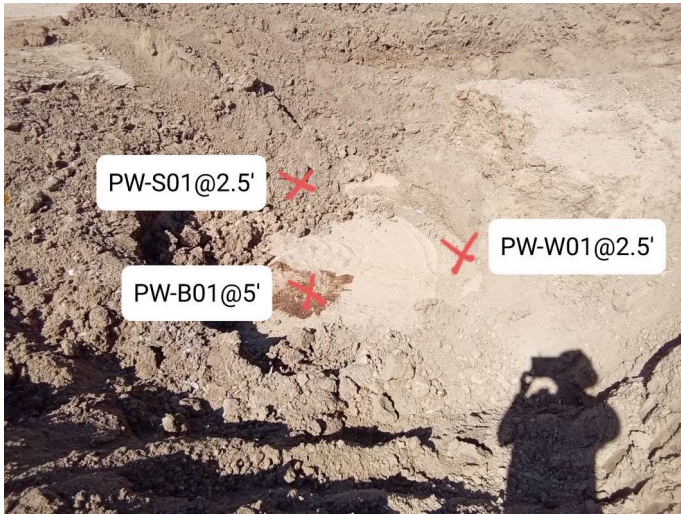
Bottom of AST

R2 - P1



Looking West

R3 - P1



Looking South

R4 - P1



Looking East

R8 - P1



looking north

R10 - P1



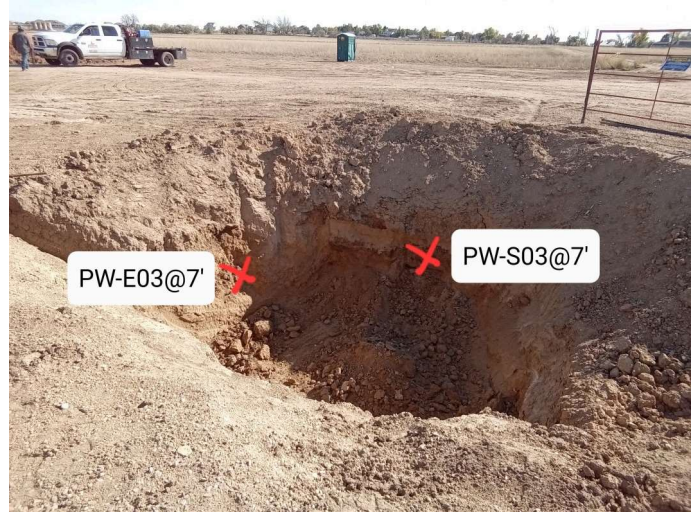
looking south

R13 - P1



Looking west

R15 - P1



Looking southeast

R18 - P1



Looking west

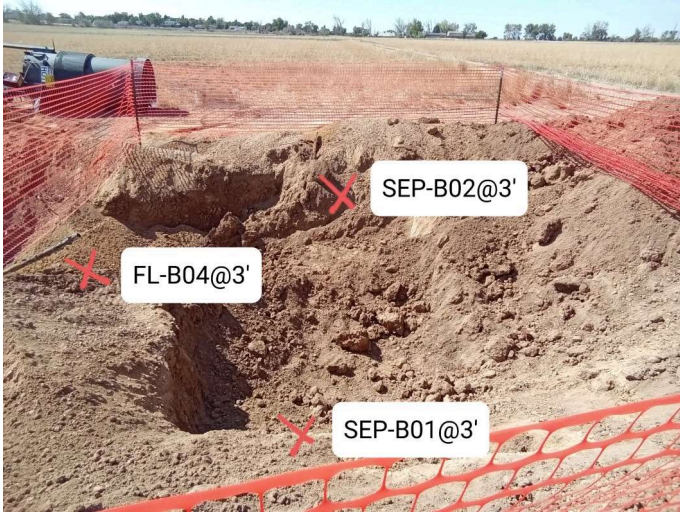
Other observations regarding tanks

Separators

#	PID Readings	Sample Taken?	Sample ID #
R1	0.1	Yes	SEP-B01@3'
R2	0.1	Yes	SEP-B02@3'

Photo(s)

R1 - P1



Looking South

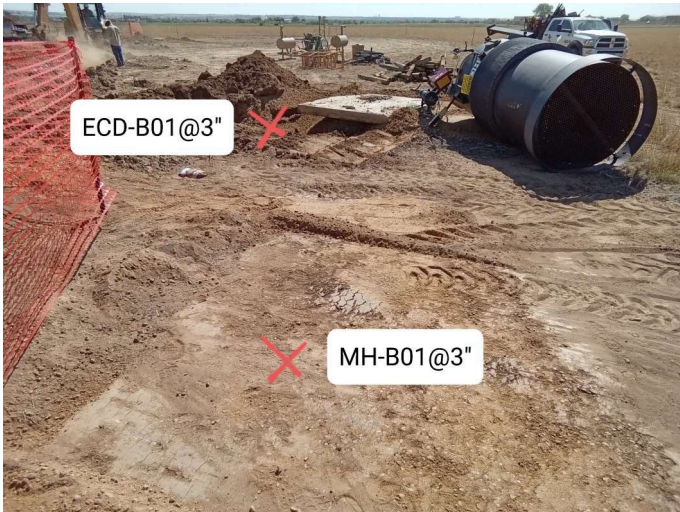
Other observations regarding separators

Third Party Equipment

#	Type	Sample Taken?	Sample ID #	PID Readings
R1	Meter House	Yes	MH-B01@3"	0.1

Photo(s)

R1 - P1



Looking East

Other Facility Equipment

#	Equipment type	PID Readings	Sample Taken?	Sample ID #
R1	ECD	0.4	Yes	ECD-B01@3"
R2	Dump line	0.2	Yes	DL-B01@3'
R3	Dump line	0.5	Yes	DL-B02@3'
R4	Dump line	0.6	Yes	DL-B03@3'
R5	Background	0.4	Yes	PW-BG01@2.5'
R6	Background	0.5	Yes	PW-BG01@5'
R7	Background	0.1	Yes	PW-BG02"@2.5'
R8	Background	0.3	Yes	PW-BG02@5'

#	Equipment type	PID Readings	Sample Taken?	Sample ID #
R9	Background	0.1	Yes	PW-BG03@7'
R10	Background	1.8	Yes	PW-BG04@9'
R11	Background	1.0	Yes	PW-BG05@9'
R12	PW Excavation	0.7	Yes	PW-W04@7'
R13	PW Excavation	0.3	Yes	PW-N04@7'
R14	PW Excavation	0.2	Yes	PW-S04@7'
R15	PW Excavation	0.2	Yes	PW-W05@7'

Photo(s)

R2 - P1



Looking South

R4 - P1



Looking South

R5 - P1



Looking West

R7 - P1



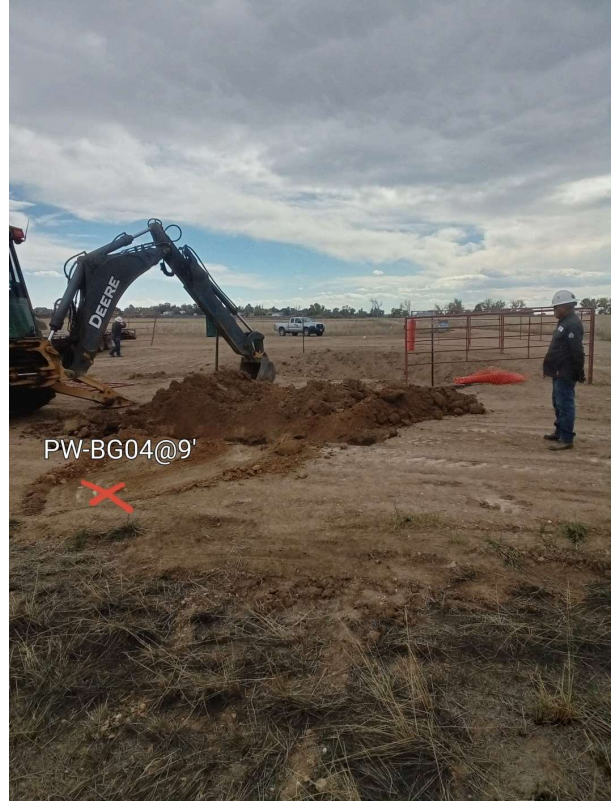
Looking Northeast

R9 - P1



looking north

R10 - P1



Looking south

R11 - P1



Looking north

R13 - P1



Looking northwest



Looking west

Other observations regarding other facility or third party equipment

Summary

Was impacted soil identified? Yes - less than 10 cubic yards

Total number of soil samples field screened 36

Total number of soil samples collected 36

Highest PID Reading 6.4

Total number of soil samples submitted to lab for analysis 16

Was groundwater encountered during the investigation? No

Measured depth to groundwater

Was remedial groundwater removal conducted?

Date Groundwater was encountered

Commencement date of removal

Sheen on groundwater?

Free product observed?

Volume of groundwater removed prior to sampling

Volume of groundwater removed post sampling

Total volume of groundwater removed

Total number of groundwater samples collected

Total number of groundwater samples submitted to lab for analysis