



ROEMER OIL COMPANY

1675 Broadway, Suite 2750 • Denver, Colorado 80202 • (303) 592-4346 • FAX: (303) 592-4349

ONSHORE OIL & GAS ORDER NO. 1

**APPROVAL OF OPERATIONS ON ONSHORE
FEDERAL AND INDIAN OIL & GAS LEASES**

ROEMER WILD THING #1-14

RECEIVED

SEP - 2 1993

COLO. OIL & GAS CONS. COMM.

**1650' FNL, 2040' FWL (SE NW)
SECTION 14, T19S R45W
KIOWA COUNTY, COLORADO**

UNITED STATES
DEPARTMENT OF THE INTERIOR
BUREAU OF LAND MANAGEMENT

APPLICATION FOR PERMIT TO DRILL OR DEEPEN

1a. TYPE OF WORK

DRILL ☒

DEEPEN ☐

b. TYPE OF WELL

OIL
WELL ☒

GAS
WELL ☐

OTHER

SINGLE
ZONE ☐

MULTIPLE
ZONE ☐

2. NAME OF OPERATOR

Roemer Oil Company

3. ADDRESS AND TELEPHONE NO.

1675 Broadway, Suite 2750, Denver, CO 80202 (303) 592-4346

4. LOCATION OF WELL (Report location clearly and in accordance with any State requirements.)*
At surface

1650' FNL, 2040' FWL

At proposed prod. zone

Same

14. DISTANCE IN MILES AND DIRECTION FROM NEAREST TOWN OR POST OFFICE*

2 1/2 miles south of Brandon, Colorado

16. DISTANCE FROM PROPOSED*

LOCATION TO NEAREST
PROPERTY OR LEASE LINE, FT.
(Also to nearest drig. unit line, if any)

600'

16. NO. OF ACRES IN LEASE

320

17. NO. OF ACRES ASSIGNED
TO THIS WELL

40

18. DISTANCE FROM PROPOSED LOCATION*
TO NEAREST WELL, DRILLING, COMPLETED,
OR APPLIED FOR, ON THIS LEASE, FT.

19. PROPOSED DEPTH

5500'

20. ROTARY OR CABLE TOOLS

Rotary

21. ELEVATIONS (Show whether DF, RT, GR, etc.)

3891' GR

22. APPROX. DATE WORK WILL START*

September 27, 1993

23.

PROPOSED CASING AND CEMENTING PROGRAM

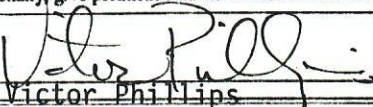
SIZE OF HOLE	GRADE, SIZE OF CASING	WEIGHT PER FOOT	SETTING DEPTH	QUANTITY OF CEMENT
12-1/4"	8-5/8"	23#	300'	240 sx
7-7/8"	4-1/2"	11.60#	5400'	250 sx

IT IS PROPOSED TO DRILL WITH ROTARY TOOLS TO A DEPTH SUFFICIENT TO TEST THE SPERGEN FORMATION, TOP OF WHICH IS ANTICIPATED AT 5213. 8 5/8" SURFACE CASING WILL BE SET AT APPROXIMATELY 300' AND CEMENTED TO THE SURFACE. 7 7/8" HOLE TO BE DRILLED TO TD AND THE WELL WILL BE LOGGED. IF PRODUCTIVE 4 1/2" PRODUCTION CASING WILL BE SET TO PROTECT ALL ZONES. PRODUCTIVE ZONE WILL BE PERFORATED TREATED IF NECESSARY AND WILL BE COMPLETED.

IN ABOVE SPACE DESCRIBE PROPOSED PROGRAM: If proposal is to deepen, give data on present productive zone and proposed new productive zone. If proposal is to drill or deepen directionally, give pertinent data on subsurface locations and measured and true vertical depths. Give blowout preventer program, if any.

24.

SIGNED



TITLE

Engineer

DATE 8/20/93

(This space for Federal or State office use)

PERMIT NO.

APPROVAL DATE

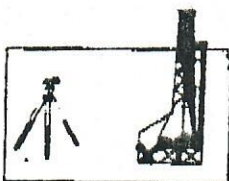
Application approval does not warrant or certify that the applicant holds legal or equitable title to those rights in the subject lease which would entitle the applicant to conduct operations thereon.
CONDITIONS OF APPROVAL, IF ANY:

APPROVED BY

TITLE

DATE

*See Instructions On Reverse Side

BEST IMAGE
AVAILABLE

ROBINSON SERVICES, INC.

P.O. Box 1574
Garden City, Kansas 67846
(316) 278-6159

973

INVOICE NO.

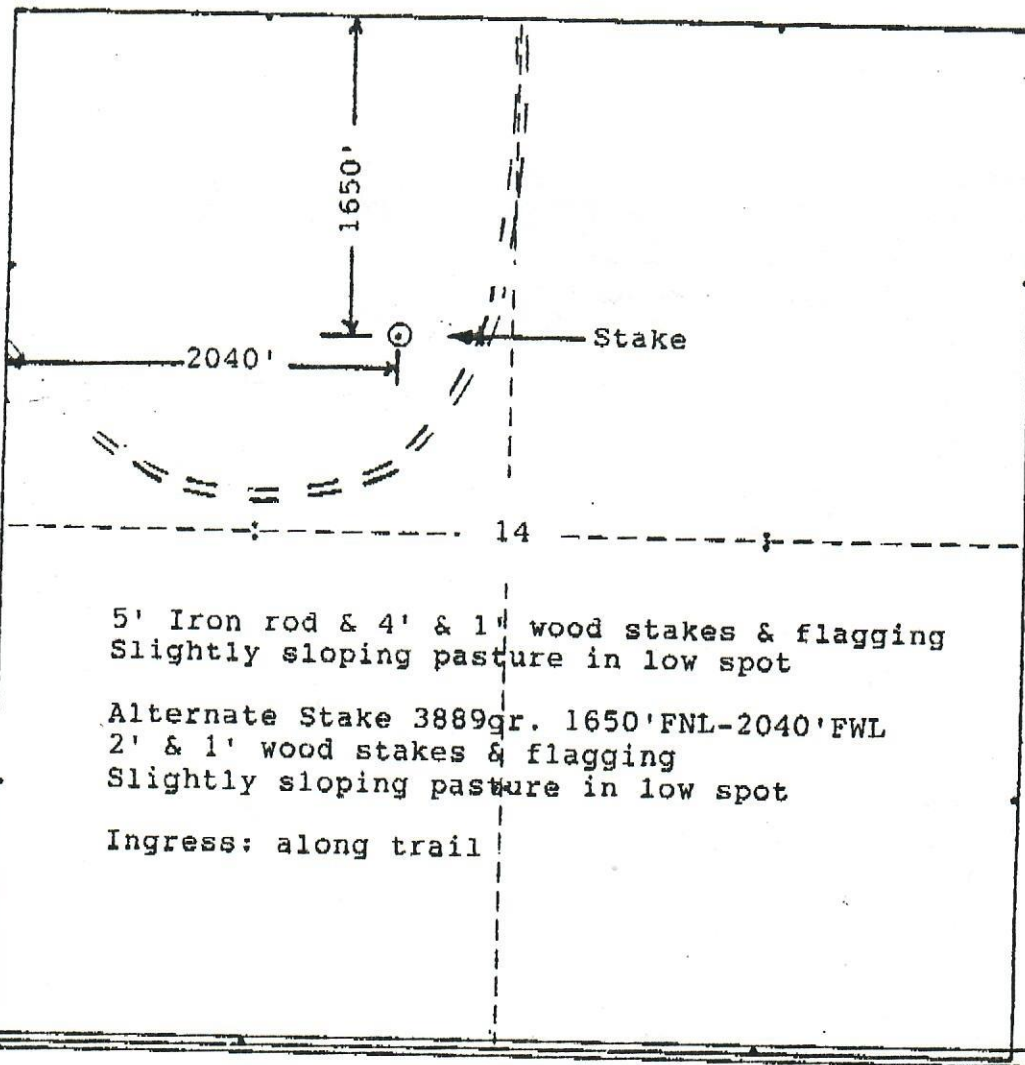
Roemer Oil Co.
OPERATOR1
NOWild Thing
FARMKiowa
COUNTY14 19S 45W
S T R2310' FWL 1650' FNL
LOCATION

ELEVATION: 3891gr

Roemer Oil Co.
1675 Broadway Suite 2750
Denver, Co. 80202Directions: From West edge of
Brandon & Hwy 96 go 2½ miles
South- then 3/10 East to well
-then 6/10 mile on trail to
Stakes West of trail.

AUTHORIZED BY: Victor Phillips

SCALE 1" = 1000'



Staked 8/16/93



ROEMER OIL COMPANY

1675 Broadway, Suite 2750 • Denver, Colorado 80202 • (303) 592-4346 • FAX: (303) 592-4349

Wild Thing #1-14
1650' FNL, 2040' FWL (SE NW)
Section 14, T19S R45W
Kiowa County, Colorado

DRILLING PROGRAM

Onshore Oil & Gas Order #1

Approval of Operations on Onshore Federal and Indian Oil and Gas Leases

All lease and/or unit operations will be conducted in such a manner that full compliance is made with applicable laws, regulations (43 CFR 3100), Onshore Oil and Gas Order No. 1, and the approved plan of operations. The operator is fully responsible for the actions of its subcontractors. A copy of these conditions will be furnished to the field representative to ensure compliance. A copy of the approved APD will be posted in the doghouse.

1.) The tops of important geologic markers are as follows:

Formation	Depth
Stone Corral	2241
Neva	2952
Virgil	3304
Missourian	3689
Des Moines	4158
Cherokee	4346
Atoka	4656
Morrow	4774
Keyes	4991
Mississippian	5046
Spergen	5213

The control well is the Baughman #1 located 2970' south and 7860' east of location for the Wild Thing 1-14. Baughman #1 is set at 660' FEL and 660' FSL in section 13 T19S R45W. With respect to this control well the Wild Thing 1-14 is expected to be about 100' structurally higher.

Wild Thing #1-14

1650' FNL, 2040' FWL (SE NW)

Section 14, T19S R45W

Kiowa County, Colorado DRILLING PROGRAM Page 2

2.) The estimated depth at which water, oil or gas or other mineral bearing formations are expected to be encountered are as follows:

Water	Ogalalla	200'
Water	Dakota	610'
Gas	Morrow	4774'
Oil	Shawnee	3856'
Oil/Gas	Keyes	4991'
Oil/Gas	Mississippian	5046'

All fresh water and prospectively valuable minerals encountered during drilling, will be recorded by depth and adequately protected. All oil and gas shows will be evaluated to determine commercial potential.

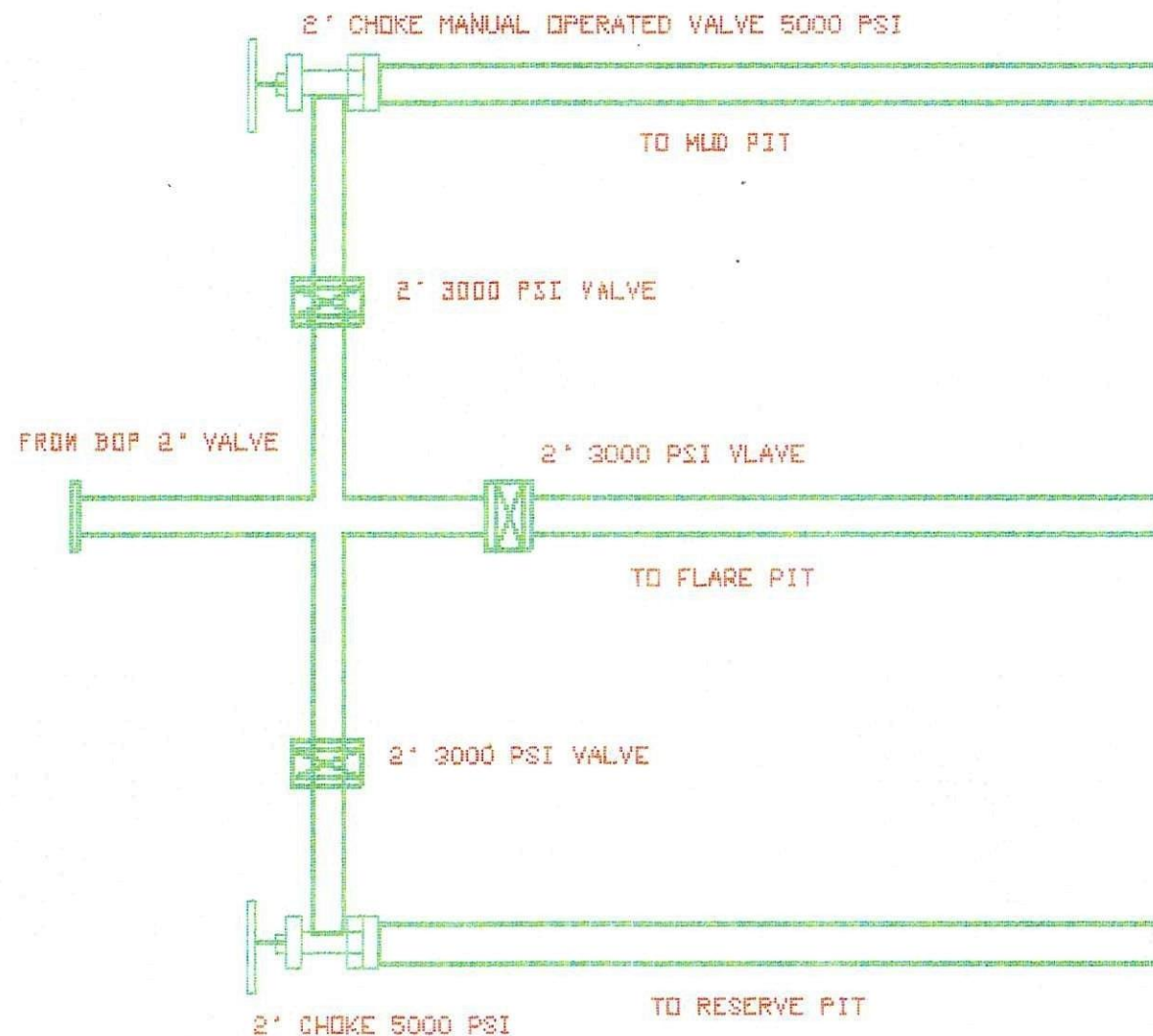
3.) Roemer Oil Company's minimum specifications for pressure control equipment are as follows:

- A.) Blowout preventers and related well control equipment shall be installed, tested and used in accordance with the rules and regulations described in Onshore Oil and Gas Order number 2.
- B.) Ram type blow out preventers must have the proper rams for the operations being performed, including casing rams when running production casing.
- C.) Ram type blowout preventers are to have handwheels installed.
- D.) A choke line and kill line are to be properly installed. The kill line is not to be used as a fill up line.
- E.) Accumulator systems shall have sufficient pressure capacities as stated in Onshore Oil and Gas Order number 2.
- F.) Drill string safety valves to fit all pipe threads in the drill string are to be maintained on the rig floor while drilling operations are in progress.
- G.) All BOP tests and drills are to be recorded in the driller's log.
- H.) Quantities of mud materials sufficient to ensure well control shall be maintained, readily accessible for use at all times.
- I.) When coming out of the hole with the drill pipe, the mud level in the hole shall be maintained within 100 feet of surface. The volume of mud required to fill the hole shall be watched, and any time there is an indication of swabbing, or influx of formation fluids, proper blowout prevention precautions must be taken. The mud shall not be circulated and conditioned except on or near bottom, unless well conditions prevent running pipe to bottom.

Pressure control equipment: A BOP Schematic is shown on the following page.

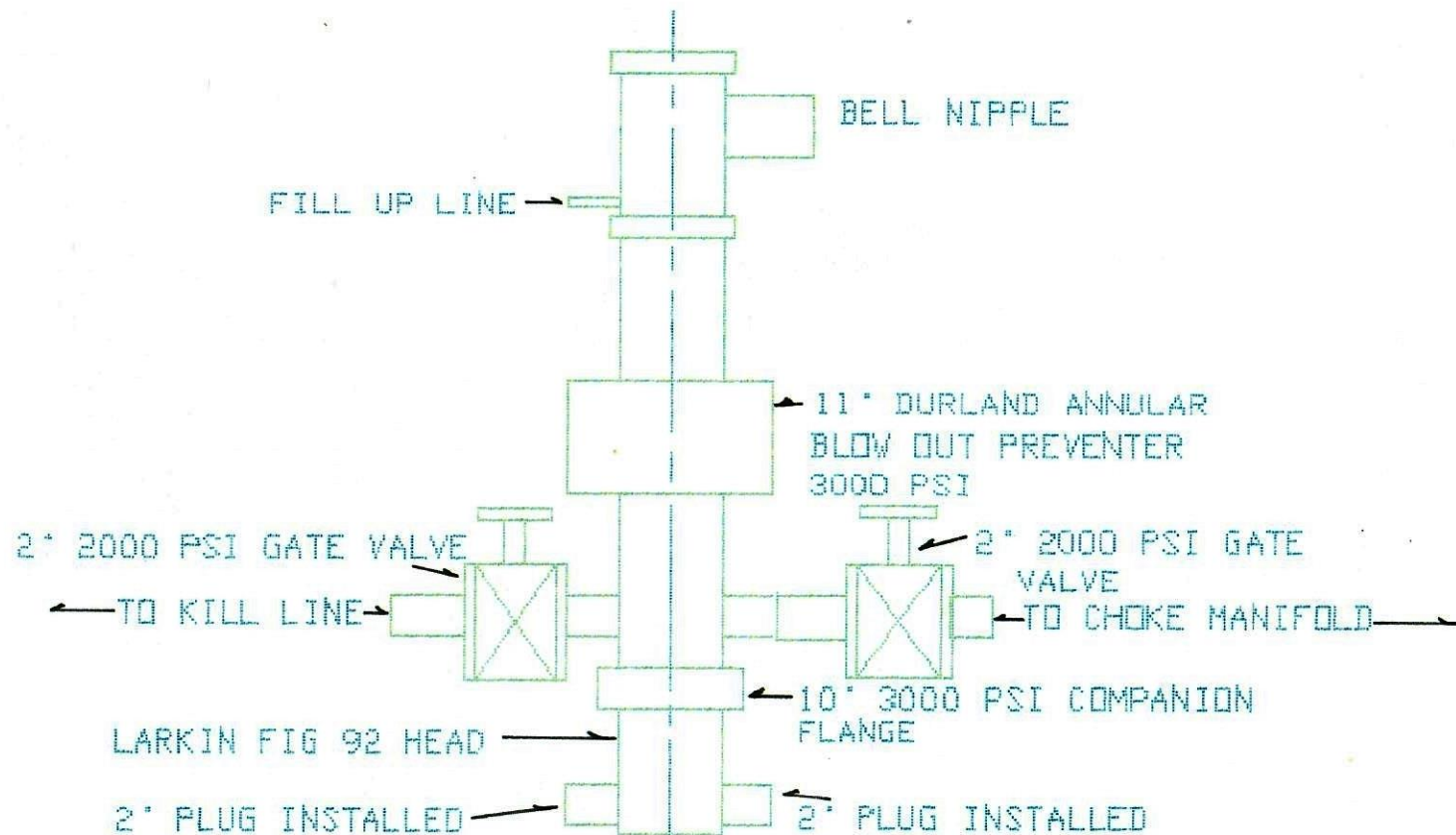
4.) Casing Program and Auxiliary Equipment:

A.) Casing Program:



ROEMER OIL COMPANY WILD THING 1-14
CHOKER MANIFOLD MURFIN DRILLING #14

BLOW OUT PREVENTER EQUIPMENT



ROEMER OIL COMPANY
WILD THING 1-14
SEC 14 T19S R 45W

Wild Thing #1-14
1650' FNL, 2040' FWL (SE NW)
Section 14, T19S R45W
Kiowa County, Colorado

DRILLING PROGRAM

Page 4

Hole Size	Interval	Casing	Wt & Grade
12.25"	0 to 300'	8 5/8"	23# K55 ST & C New
7.875	0 to 5400'	4 1/2"	11.6# J55 LT & C New

The production casing will be inspected and pressure tested according to the API specifications. The following safety factors were adhered to in designing the casing program: 1.125 (min.) for collapse and burst and 1.80 (min.) for tension. The casing design utilized a fluid gradient of .53 psi/ft for the production casing.

B.) The 8 5/8" surface casing will be cemented with 240 sx which is designed to circulate cement to surface. The 4 1/2" production casing will be cemented with 250 sx, which is designed to cement the casing from TD to 4300' MD.

C.) The casing testing procedure, in the wellbore, will be as follows:

The 8 5/8" casing will be tested to 2500 psig, with 9 ppg KCL water, after the casing has been run and cemented, and after the casing head has been installed.

The 4 1/2" production casing will be tested to 2000 psig, with 9 ppg KCL water after the casing has been run and cemented.

Cementing Program:

A.) If the cement for surface pipe is not circulated to surface, a temperature or cement bond log is required to determine cement top.

B.) Prior to drilling the plug after cementing, all casing strings shall be pressure tested. Test pressure shall be a minimum of 1500 psi or .22 psi/ft, whichever is greater, but not to exceed 70% of the minimum internal yield, for all casing strings. If the pressure declines more than 10% in 30 minutes, or if there is other indication of a leak, the casing shall be recemented, repaired or an additional casing string run, and the casing shall be tested again in the same manner.

C.) After cementing but before comencing any tests, the casing string shall stand cemented without movement until the cement has reached a compressive strength of at least 500 psi at the shoe, except that in no case shall tests be initiated until cement has been in place for at least 8 hours. WOC time will be recorded in the driller's log.

The 4 1/2" 11.6# production string shall be cemented with 100 sacks common cement with 2% gel, 12 1/2 pounds of gilsonite/sack, 12% salt and 1% CFR-2. DV Tool at 4500' cemented with 150 sacks class C cement with 12% salt and 1% CFR-2.

Wild Thing #1-14

1650' FNL, 2040' FWL (SE NW)

Section 14, T19S R45W

Kiowa County, Colorado DRILLING PROGRAM Page 5

5.) Mud Program and Circulating Medium:

A.) The surface hole from 0 to 300' will be drilled with a fresh water based mud with the following properties:

Weight	Viscosity	Fluid Loss	PH
9.4	36 to 40	Uncontrolled	Uncontrolled

B.) The production hole from 300' to 5400', will be drilled with a low solids non dispersed water based mud. The following properties will be maintained:

Weight	Viscosity	Fluid Loss	PH
9.0 to 9.3	38 to 40	10 to 12 to 4000	Uncontrolled
9.2 or less	38 to 45	6 with 10 #/bbl LCM	Uncontrolled

6.) Coring, Logging and Testing Program:

Plan to DST the Morrow sand and Mississippian, plan to run Dual Induction, Laterlog, Sonic, and Neutron Density logs.

Whether the well is completed or is a dry hole, "Well Completion and Recompletion Report and Log" (Form 3160-4) will be submitted not later than 30 days after completion of the well or after completion of operations being performed, in accordance with CFR 3164. Two copies of all logs, well test data, geologic summaries, sample description and all other surveys or data obtained and compiled during the drilling, workover and or completion operations, will be filed with Form 3160-4. Samples (cuttings, fluids and/or gases) will be submitted when requested by the authorized officer (AO).

7.) Abnormal Conditions, Bottom Hole Pressures and Potential Hazards:

Potential lost circulation from Cedar Hills formation 1200' at which time small amounts of lost circulation material will be carried in the mud system. Significant lost circulation is possible in the bottom of the hole in the Spergen where lost circulation material concentrations will be up in the 10 pound per barrel range. H2S Gas is possible in the Shawanee or Topeka and remotely possible in the Marmathon. H2S safety will be emphasized by both company representative on location and rig tool pusher. H2S safety Scott air packs will be stationed at three different locations around the rig with the normal flags and detectors.

Wild Thing #1-14
1650' FNL, 2040' FWL (SE NW)
Section 14, T19S R45W
Kiowa County, Colorado DRILLING PROGRAM Page 6

8.) Anticipated Starting Dates and Notifications of Operations:

Location construction, pits etc, as soon as possible after approval of APD.

Estimated spud date: September 27, 1993.

The location will not be started, the well will not be plugged and no drilling or workover equipment will be removed from a well placed in a suspended status without prior approval of the AO. If operations are to be suspended, prior approval of the AO will be obtained and notification given before resumption of operations.

The spud date will be reported orally to the AO within 48 hours after spudding. If the spudding occurs on a weekend or a holiday the report will be submitted on the following regular work day. The oral report will be followed up with a Sundry Notice. In accordance with Onshore Oil and Gas Order No. 1, this well will be reported on Form 3160-6 "Monthly Report of Operations", starting with the month in which operations commence and continue each month until the well is physically plugged and abandoned. This report will be filed in duplicate, to the Bureau of Land Management, P.O. Box 2200, Canon City, Colorado 81215.

Immediate report: Spills, blowouts, fires, leaks, accidents, or any other unusual occurrences shall be promptly reported in accordance with the requirements of NTL-3A or its revision.

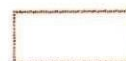
A Sundry Notice, Form 3160-5, will be sent concerning the completion rig to be used for prior approval of the AO, and all conditions of this approved plan are applicable during all operations conducted with the completion rig.

Should the well be successfully completed for production, the AO will be notified when the well is placed in production. Such notification will be sent by telegram or other written communication, not later than 5 days following the date on which the well was placed on production.

Pursuant to NTL-4A, lessees or operators are authorized to vent/flare gas during the initial well evaluation tests, not exceeding a period of 30 days or the production of 50 MMCF of gas whichever occurs first. An application must be filed with the District Engineer and approval received, for any venting/flaring of gas beyond the initial 30 day or authorized test period.

A schematic facilities diagram as required by CFR 3162.7-2, 3162.7-3 and 3162.7-4 shall be submitted to the appropriate District Office within 30 days of installation or first production, whichever comes first. All site security regulations as specified in 43 CFR 3162.7 shall be adhered to. All product lines entering and leaving hydrocarbon storage tanks will be effectively sealed in accordance with 43 CFR 3162.7-4.

300' FENCE LINE
IF



TOOL PUSHER TRAILER

ROEMER OIL COMPANY
WILD THING 1-14
SEC 14 T192 R45W



PIPE RACKS

MUD LOGGER
TRAILER

FENCE LINE 300' ON A SIDE SQUARE LOCATION

DERRICK

PIPE BASKETS

LONG PIT
10' X 45' X 6'

4 EARTHEN PITS 8' X 8' X 8'

156'

RESERVE PIT
5' DEEP

ENTRANCE TO LOCATION

155'

BEST IMAGE
AVAILABLE

Exhibit E

Wild Thing #1-14

1650' FNL, 2040' FWL (SE NW)

Section 14, T19S R45W

Kiowa County, Colorado DRILLING PROGRAM Page 7

A first production conference will be scheduled within 15 days after receipt of the first production notice.

No well abandonment operations will be commenced without the prior approval of the AO. In the case of newly drilled dry holes or failures, and in emergency situations, oral approval will be obtained from the AO. A "Subsequent Report of Abandonment" Form 3160-5, will be filed with the AO within 30 days following completion of the well for abandonment. This report will indicate where plugs were placed and the current status of the surface restoration. Final abandonment will not be approved until the surface reclamation work required by the approved APD or approved abandonment notice has been completed to the satisfaction of the AO or his representative, or the appropriate Surface Managing Agency. Pursuant to Onshore oil and Gas Order No. 1, lessees and operators have the responsibility to see that their exploration, development, production, and construction operations are conducted in a manner which conforms with applicable Federal laws and regulations and with State and Local laws and regulations to the extent that such State and local laws are applicable to operations on Federal or Indian lands.

Victor Phillips P.E.
Roemer Oil Company

Wild Thing #1-14
1650' FNL, 2040' FWL (SE NW)
Section 14, T19S R45W
Kiowa County, Colorado SURFACE USE PROGRAM Page 9

3.) Location of Existing Wells

Exhibit E shows all wells within a one mile radius of the proposed location.

4.) Location of Existing and or Proposed Facilities If Well Is Productive

A.) If production is obtained, new facilities will be constructed. Production facilities will be located on highest possible native elevation to the south east with additional fill required to be level with the pumping unit pad which will be built to 24" above the existing surface. The proposed location and layout of the facilities is shown in Exhibit C. All flow lines will be buried. It will be necessary to lay a gas sales line to this well, all necessary applications for permits will be submitted when necessary.

B.) Rehabilitation, whether the well is productive or dry will be made in all disturbed areas in accordance with BLM regulations.

5.) Location and Type of Water Supply

Water will be purchased and hauled from a private pond in section 20 T18S R45W, this is fresh water with minimum chlorides and calcium.

6.) Construction Materials

Construction materials are not necessary for the drilling operations, after production is obtained approved caliche/rock will be purchased and brought in as required.

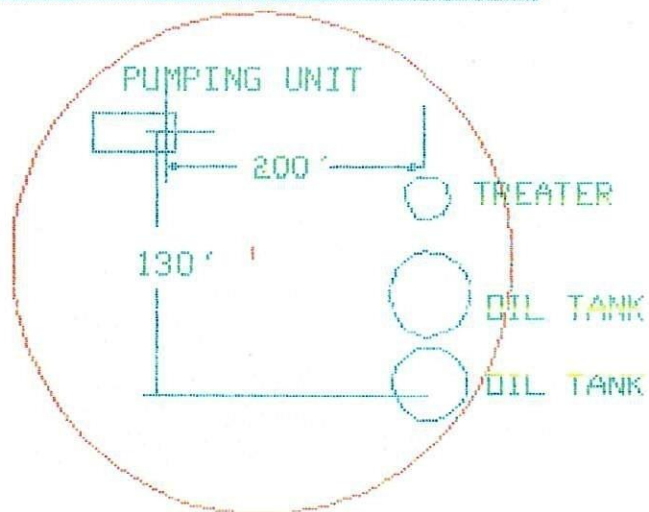
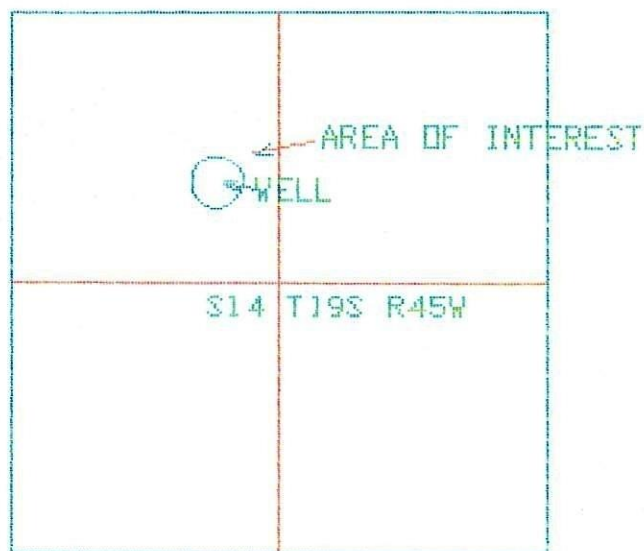
7.) Methods of Handling Waste Disposal

A.) Drill cuttings will be buried in the reserve pit.

B.) The drilling fluids will be allowed to evaporate in the reserve pit, until the pit is dry and then buried according to BLM regulations.

C.) All trash will be collected in a steel trash bin designed so that trash cannot blow out of it. All trash will be hauled to the county landfill or other approved disposal site. After completion of drilling operations, the area will be cleaned up and all debris will be hauled off to a public landfill. See location rig layout.

D.) Water produced during the testing operations will be disposed of in the drill pits. As in item B. above, the water will be allowed to evaporate if minimal or conversely, will be hauled to an approved commercial disposal facility not located on the lease or on Federal Lands.



ROEMER OIL COMPANY WILD THING 1-14
TENATIVE FACILITIES LAYOUT

Wild Thing #1-14

1650' FNL, 2040' FWL (SE NW)

Section 14, T19S R45W

Kiowa County, Colorado SURFACE USE PROGRAM

Page 10

8.) Ancillary Facilities

None anticipated

9.) Well Site Layout

A.) Exhibit B is the drill pad layout as staked showing fence lines and entrance.

B.) Exhibit F is a diagram showing the planned layout, as proposed of suitable rig and equipment, reserve pit, mud pits, pipe racks, mud tanks etc. No living facilities are planned on the drill site. There will be one or two trailers on the site for tool pusher and geologist. Sanitary portollets will be located as shown.

10.) Plans for Reclamation of the Surface

A.) If the well is abandoned, the site will be restored to the original condition as nearly as possible. Backfilling and leveling as necessary are planned to commence as soon as all pits have dried. Unused drilling materials will be removed from the site immediately after drilling is completed. If the well is productive, unused areas will be reclaimed in like manner as soon as possible with approval.

B.) The excess soil material, if any, will be spread over the area. Revegetation will be accomplished by planting mixed grasses as per the BLM stipulations and advice.

11.) Surface Ownership

The surface and all lands at the well location and crossed by the roads which are to be used is owned by the Federal Government.

12.) Other Information

A.) A complete, standard cultural resource, including archaeological survey will be forwarded to the BLM as soon as they are complete.

B.) The lessee's representative for this project is:

Victor Phillips
Roemer Oil Company
1675 Broadway
Suite 2750
Denver, Colorado 80202

Office: 303-592-4348
Sec: 303-592-4341
Mobile 303-478-6816
Home 303-932-2575

13.) Certification

COUNTY ROAD, WEST ROAD OUT OF BRANDON

BRANDON 2.5
MILES NORTH

WELL ACCESS MAP WILD THING 1-14



CATTLE GUARD INSTALLED
HERE TO REPLACE ELECTRIC
WIRE ACROSS ACCESS.

NEW ROAD

FENCE AROUND
LOCATION WILL BE
FIVE STRAN BARB
APPROVED BY BLM
5 POST BRACE IN
CORNERS.

SECTION 15
T19S R45W

SECTION 14
T19S R45W

* NOTE ONE LINE FENCE MARKED ADJACENT TO ROAD ON BOTH SIDES

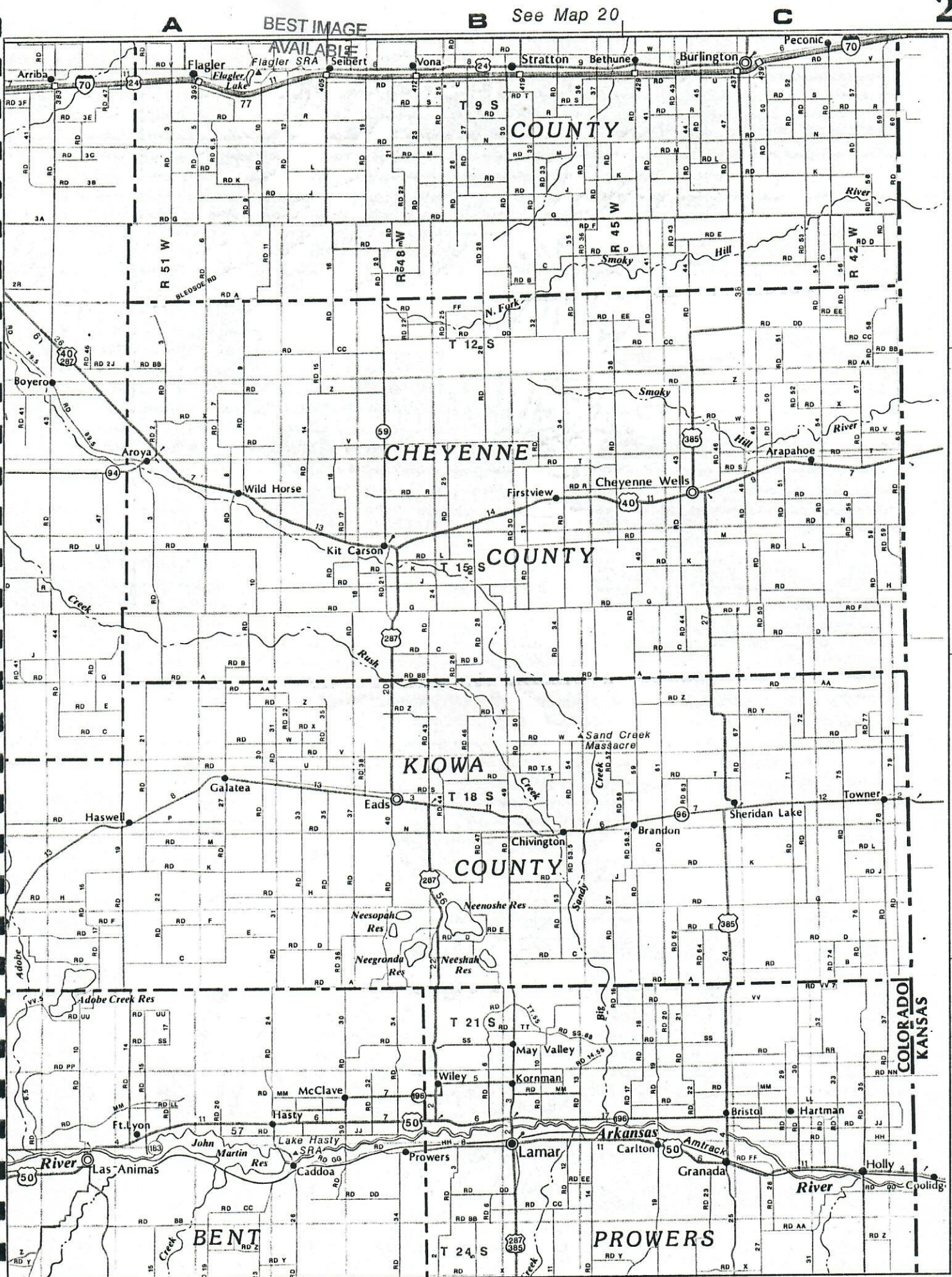
ROEMER OIL COMPANY

Exhibit B

I hereby certify that I, or persons under my direct supervision, have inspected the proposed drillsite and access route, that I am familiar with the conditions which currently exist, that the statements made in this plan are, to the best of my knowledge true and correct, and that the work associated with the operations proposed herein will be performed by Roemer Oil Company and its contractors and subcontractors in conformity with this plan and the terms and conditions under which it is approved. This statement is subject to the provisions on the 18 U.S.C. 1001 for the filing of a false statement.

Date

Victor Phillips P.E.



L. Kistler Stationery Co., Denver.

Range No. 6th Mer.

NORTH



L & F DRLG



BAUGHMAN
FARMS

BEST IMAGE
AVAILABLE

V.R. MURFIN



MURFIN
DRILLING
COMPANY



CONTRACTORS AND PRODUCERS

FAX #: 303/592-4349

August 11, 1993

Mr. Victor Phillips
Roemer Oil Company
1675 Broadway, Ste. 2750
Denver, CO 80202

Re: Rig Availability
Sec. 11-19S-45W
Kiowa County, Colorado

Dear Mr. Phillips:

As per our phone conversation, this letter shall confirm our ability to move a rig to a well at the above referenced location. The earliest I could anticipate having a rig would be around the 27th of September. I am scheduled to move on a well around the 13th of September which has previously been contracted and also has a lease deadline. I would be happy to reserve the spot around the 27th, if you so desire.

Please let me know and I will plan accordingly.

Sincerely,

Jack E. Goss
Drilling Manager

JEG:pma

cc: file

ROEMPHIL.L01

AS OF 8/12/93

UNITED STATES DEPT OF THE INTERIOR
BUREAU OF LAND MANAGEMENT
BOND ABSTRACT

PAGE 1

BLM BOND NO: CO0965

PART NO:

BEST IMAGE
AVAILABLE

SURETY BOND ID: 70178

CASE TYPE: 310434 O&G BOND ALL LANDS

NAME AND ADDRESS OF BONDED PARTIES

B85029553001 BONDED PRINCIPAL
ROEMER OIL CO
1675 BROADWAY STE 2750
DENVER CO 80202

BOND-AREA: STATEWIDE STATES COVERED: CO

TYPE OF LAND: FEDERAL-ALL RIGHTS

BOND TYPE: CERTIFICAT AMOUNT OF BOND: \$25,000

BONDED ACTIVITY/PURPOSE COMMODITY(IES)

GENERAL LSE/DRILLING OIL & GAS L
OPERATOR
PROTECTION SURFACE OWNER

ACTION CODE	ACTION DATE	ACTION TAKEN	ACTION REMARKS
468	1/16/1991	BOND FILED	6/88 EDITION
469	1/24/1991	BOND ACCEPTED	EFF 1/16/91

BEST IMAGE
AVAILABLE

R45W

