

Document Path: C:\Users\Ellyah Dalka\OneDrive - ENSOLUM, LLC\Desktop\Project Files\09A1417201 - Berig 17-35 & UP42-35 1 O SA Facility\09A1417201 - Berig 17-35 & UP42-35 1 O SA Facility.aprx

Legend

- Soil Sample Location
- Groundwater Sample
- Background Soil Sample
- Soil Sample and Groundwater Sample Location
- Former Drain Line
- Former Gas Line
- Former Oil Dump
- Former Water Dump
- Former Flowline
- Former Drip Containment
- Former Earthen Berm
- Former Fence
- Former Infrastructure
- Former Meter House
- Excavation Extent

Notes

BBL: Barrel

AST: Above Ground Storage Tank

PWV: Produced Water Vessel

ECD: Emission Control Device

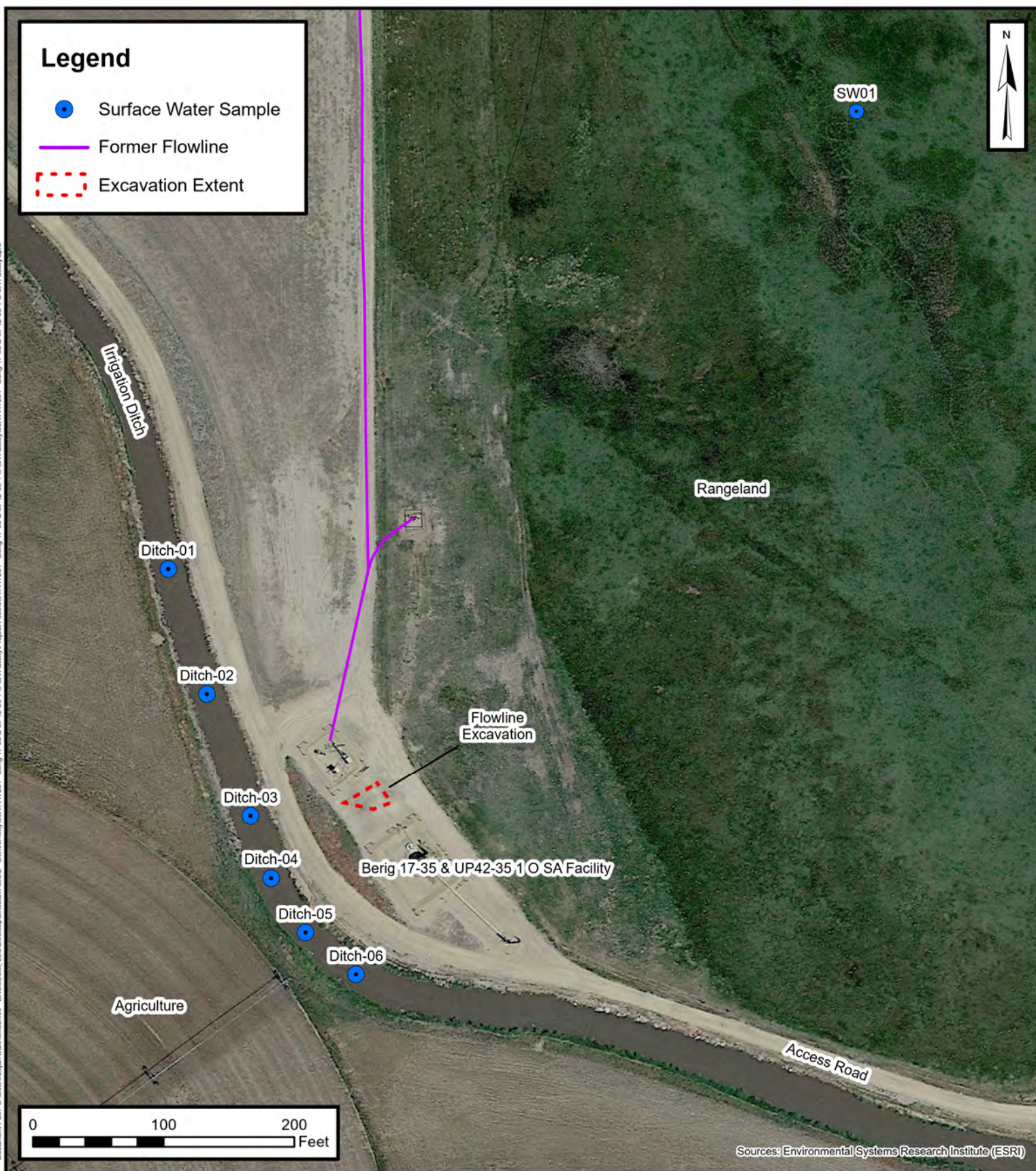


Excavation Site Map (7/29/2021)

Berig 17-35 & UP42-35 1 O SA Facility
Kerr-McGee Oil & Gas Onshore, LP
SENE SEC 35-T4N-R66W
Weld County, CO
Project Number: 09A1417201

FIGURE 1A

Document Path: C:\Users\Eljah\Desktop\Ensolium GIS2 - Denver\09A1417201 - Berig 17-35 & UP42-35 1 O SA Facility\Project Files\09A1417201 - Berig 17-35 & UP42-35 1 O SA Facility.aprx



Excavation Site Map (8/12/2021)









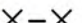

Berig 17-35 & UP42-35 1 O SA Facility
Kerr-McGee Oil & Gas Onshore, LP
SENE SEC 35-T4N-R66W
Weld County, CO

Project Number: 09A1417201

FIGURE
1B

Document Path: C:\Users\Eljah\Desktop\Ensolium GIS2 - Denver\09A1417201 - Berig 17-35 & UP42-35 1 O SA Facility\Project Files\09A1417201 - Berig 17-35 & UP42-35 1 O SA Facility.aprx

Legend

-  Soil Sample Location
-  Soil Screening Location
-  Background Soil Sample
-  Former Drain Line
-  Former Oil Dump
-  Former Water Dump
-  Former Drip Containment
-  Former Earthen Berm
-  X-X Former Fence
-  Former Infrastructure

Notes

BBL: Barrel

AST: Above Ground Storage Tank

PWV: Produced Water Vessel

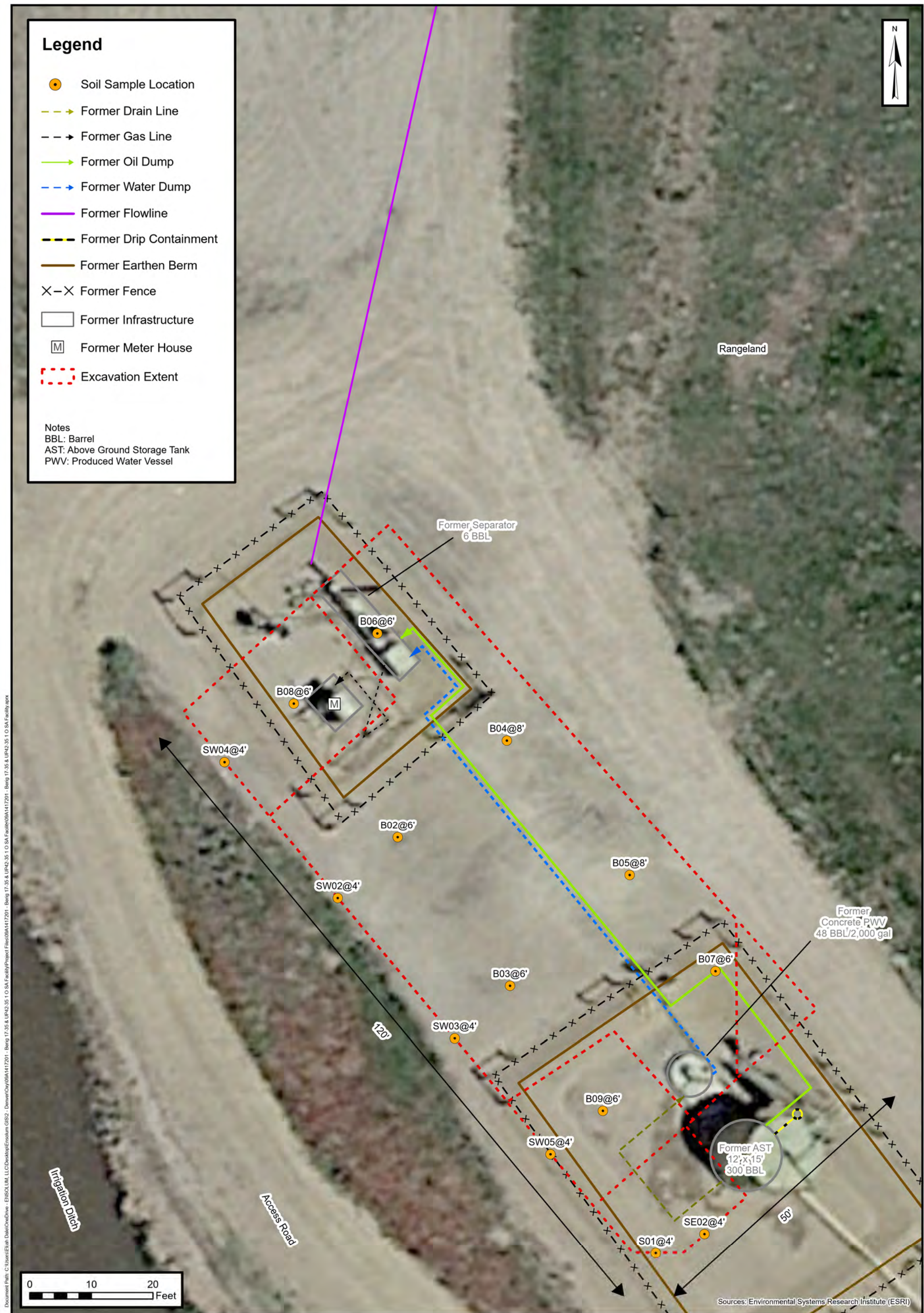


Excavation Site Map (11/18/2021)

Berig 17-35 & UP42-35 1 O SA Facility
Kerr-McGee Oil & Gas Onshore, LP
SENE SEC 35-T4N-R66W
Weld County, CO



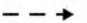








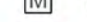
Project Number: 09A1417201

FIGURE
1C



Document Path: C:\Users\Eligh\Desktop\Ensum GIS2 - Derived\09A1417201 - Berig 17-35 & UP42-35 1 O SA Facility.aprx
Sources: Environmental Systems Research Institute (ESRI)

Legend

-  Soil Sample Location
-  Former Drain Line
-  Former Gas Line
-  Former Oil Dump
-  Former Water Dump
-  Former Flowline
-  Former Drip Containment
-  Former Earthen Berm
-  Former Fence
-  Former Infrastructure
-  Former Meter House
-  Excavation Extent

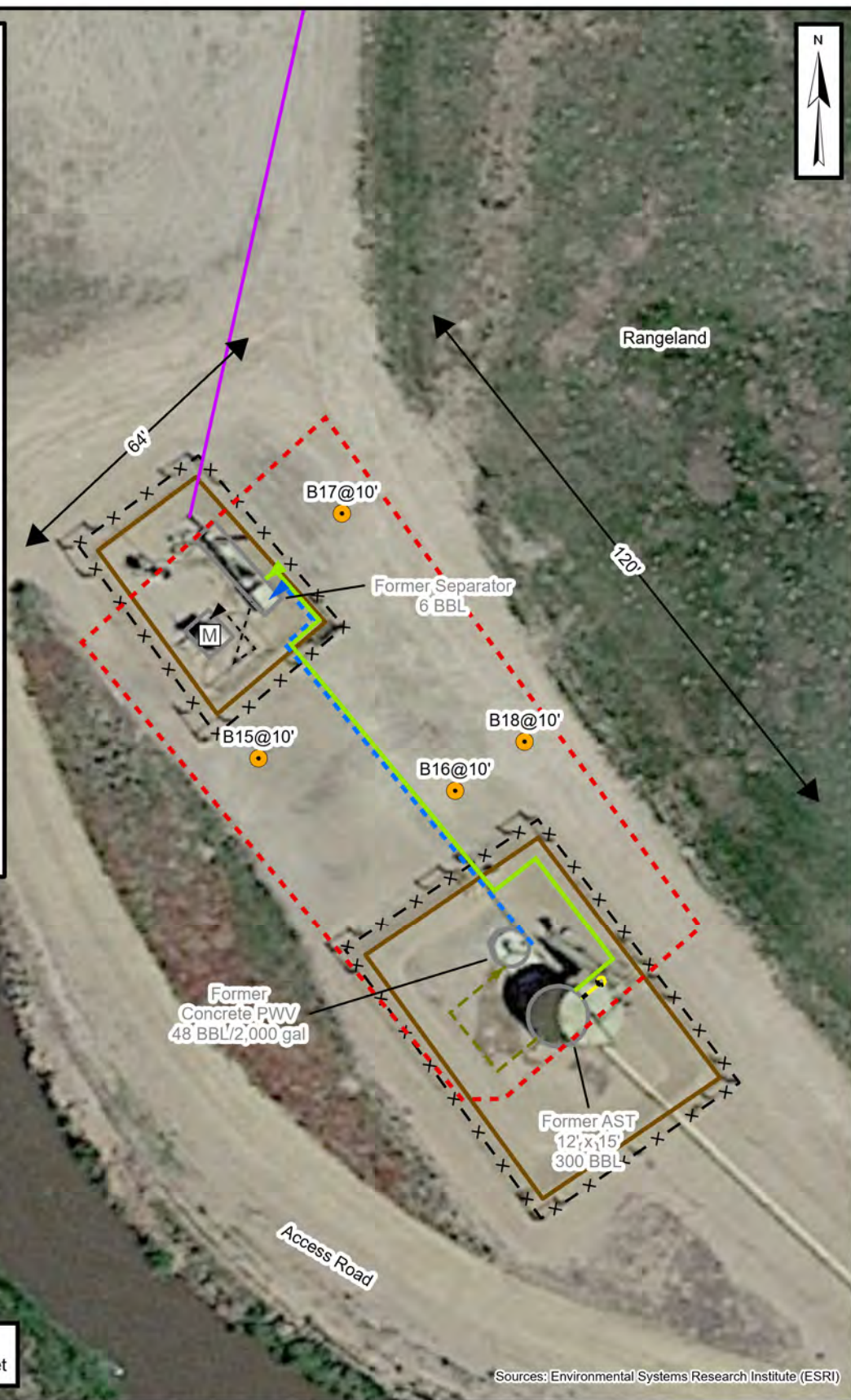
Notes

BBL: Barrel

AST: Above Ground Storage Tank

PWV: Produced Water Vessel

ECD: Emission Control Device

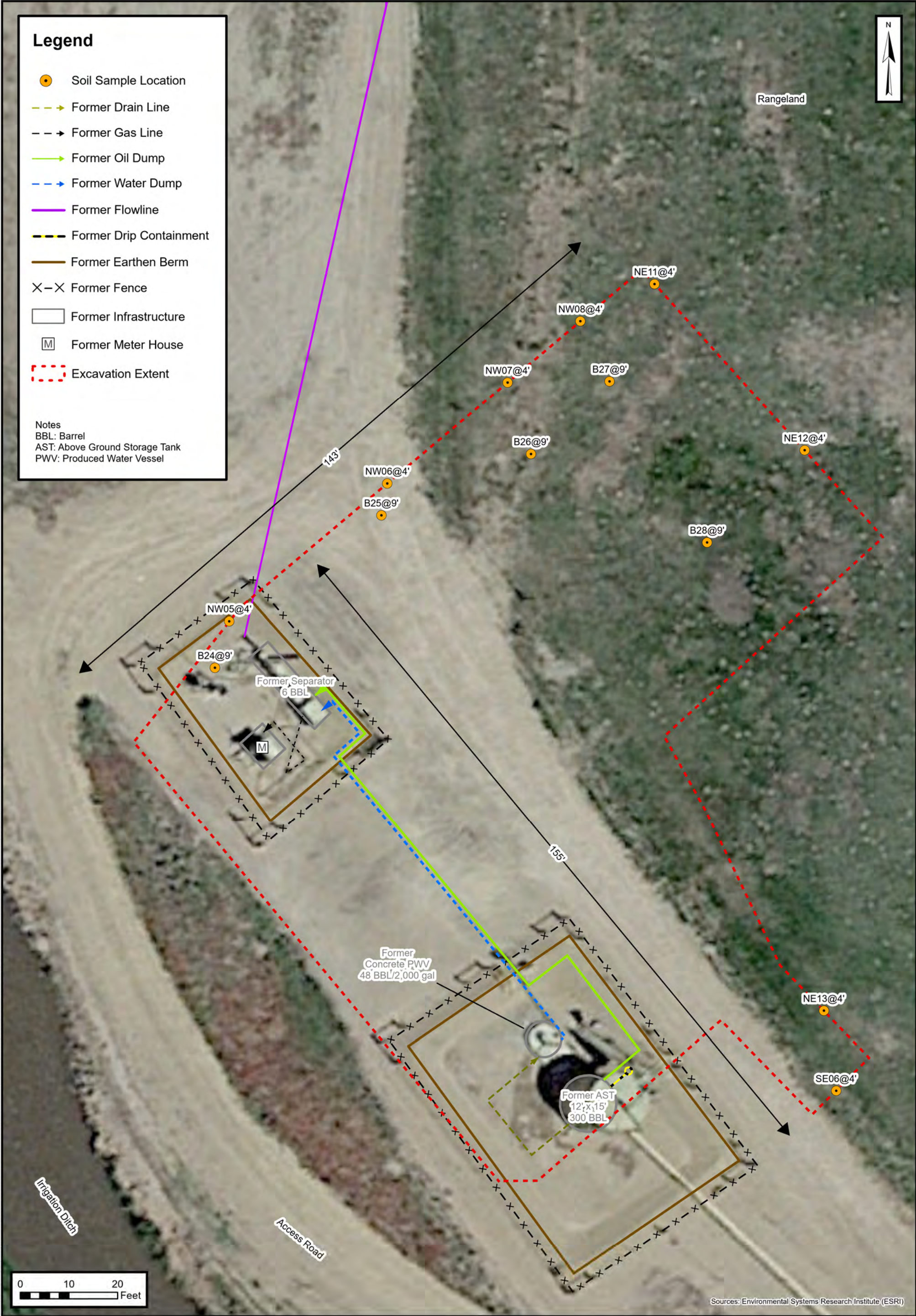


Excavation Site Map (12/21/2021)

Berig 17-35 & UP42-35 1 O SA Facility
Kerr-McGee Oil & Gas Onshore, LP
SENE SEC 35-T4N-R66W
Weld County, CO







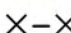


Project Number: 09A1417201

FIGURE
1F



Document Path: C:\Users\Eligh\Desktop\Ensolium GIS2 - Denver\09A1417201 - Berig 17-35 & UP42-35 1 O SA Facility\Project Files\09A1417201 - Berig 17-35 & UP42-35 1 O SA Facility.aprx

Legend

-  Soil Sample Location
-  Former Gas Line
-  Former Oil Dump
-  Former Water Dump
-  Former Flowline
-  Former Earthen Berm
-  Former Fence
-  Former Infrastructure
-  Excavation Extent

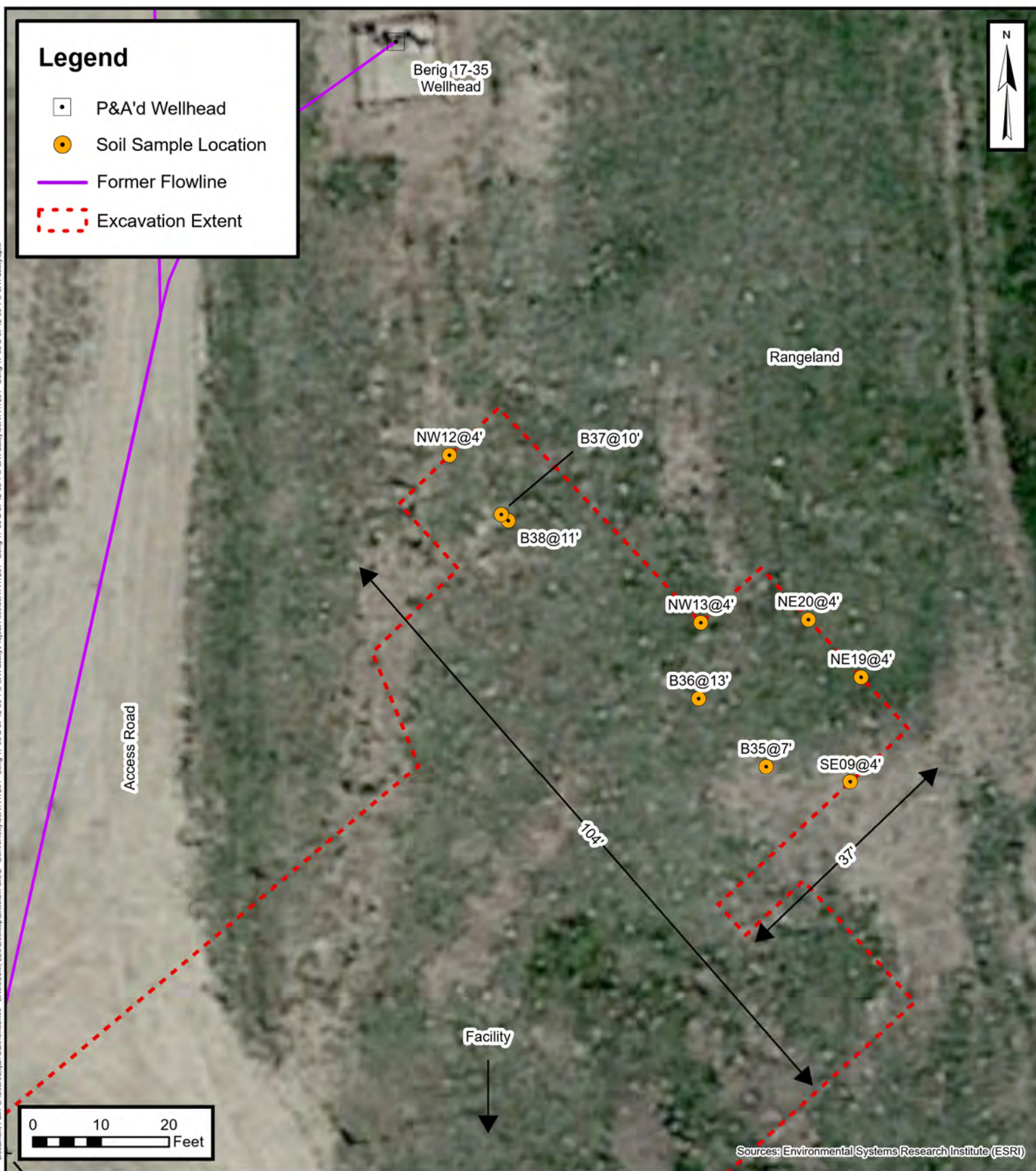
Notes
BBL: Barrel



Excavation Site Map (2/8/2022 - 2/10/2022)

Berig 17-35 & UP42-35 1 O SA Facility
Kerr-McGee Oil & Gas Onshore, LP
SENE SEC 35-T4N-R66W
Weld County, CO
Project Number: 09A1417201

Document Path: C:\Users\Eljah Date\OneDrive - ENSOLUM, LLC\Desktop\Ensolium GIS2 - Denver\09A1417201 - Berig 17-35 & UP42-35 1 O SA Facility\Project Files\09A1417201 - Berig 17-35 & UP42-35 1 O SA Facility.aprx



Excavation Site Map (2/28/2022 - 3/14/2022)

Berig 17-35 & UP42-35 1 O SA Facility
Kerr-McGee Oil & Gas Onshore, LP
SENE SEC 35-T4N-R66W
Weld County, CO
Project Number: 09A1417201

