

PHOTO LOG  
BERIG 17-35 & UP42-35 1 O SA FACILITY  
WELD COUNTY, COLORADO  
KERR-MCGEE OIL & GAS ONSHORE, LP



Release Excavation



Release Excavation

PHOTO LOG  
BERIG 17-35 & UP42-35 1 O SA FACILITY  
WELD COUNTY, COLORADO  
KERR-MCGEE OIL & GAS ONSHORE, LP



PH01



PH02

PHOTO LOG  
BERIG 17-35 & UP42-35 1 O SA FACILITY  
WELD COUNTY, COLORADO  
KERR-MCGEE OIL & GAS ONSHORE, LP



PH03



AST 01 Tank Bottom

PHOTO LOG  
 BERIG 17-35 & UP42-35 1 O SA FACILITY  
 WELD COUNTY, COLORADO  
 KERR-MCGEE OIL & GAS ONSHORE, LP



AST01 Footprint



Flowline Excavation  
 Dakota Hatch

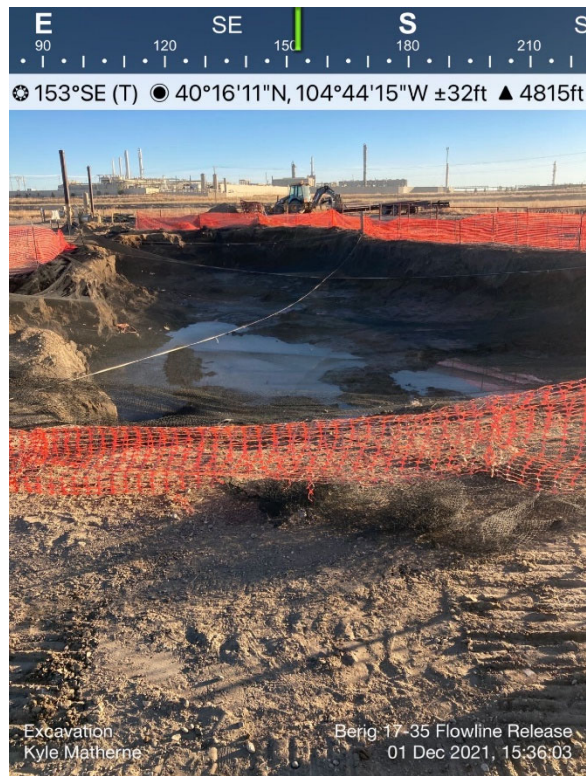
Berig 17-35  
 23 Nov 2021, 13:47:59

Release Excavation

**PHOTO LOG**  
**BERIG 17-35 & UP42-35 1 O SA FACILITY**  
**WELD COUNTY, COLORADO**  
**KERR-MCGEE OIL & GAS ONSHORE, LP**



Release Excavation



Release Excavation

PHOTO LOG  
BERIG 17-35 & UP42-35 1 O SA FACILITY  
WELD COUNTY, COLORADO  
KERR-MCGEE OIL & GAS ONSHORE, LP

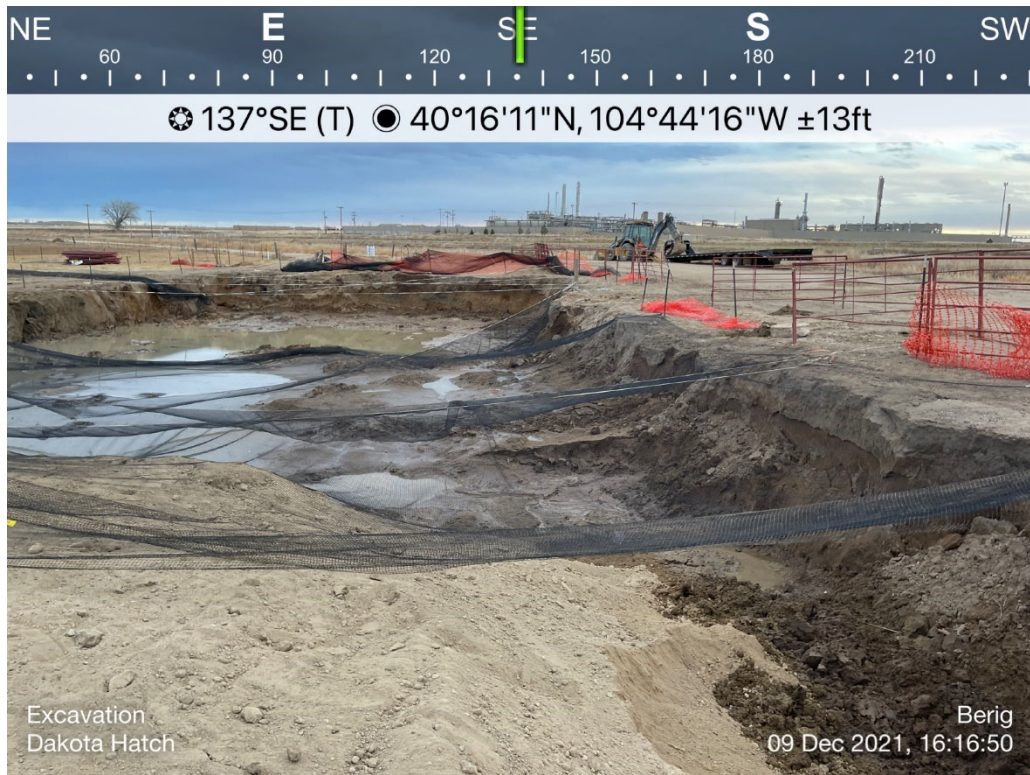


Release Excavation



Release Excavation

PHOTO LOG  
BERIG 17-35 & UP42-35 1 O SA FACILITY  
WELD COUNTY, COLORADO  
KERR-MCGEE OIL & GAS ONSHORE, LP



Release Excavation

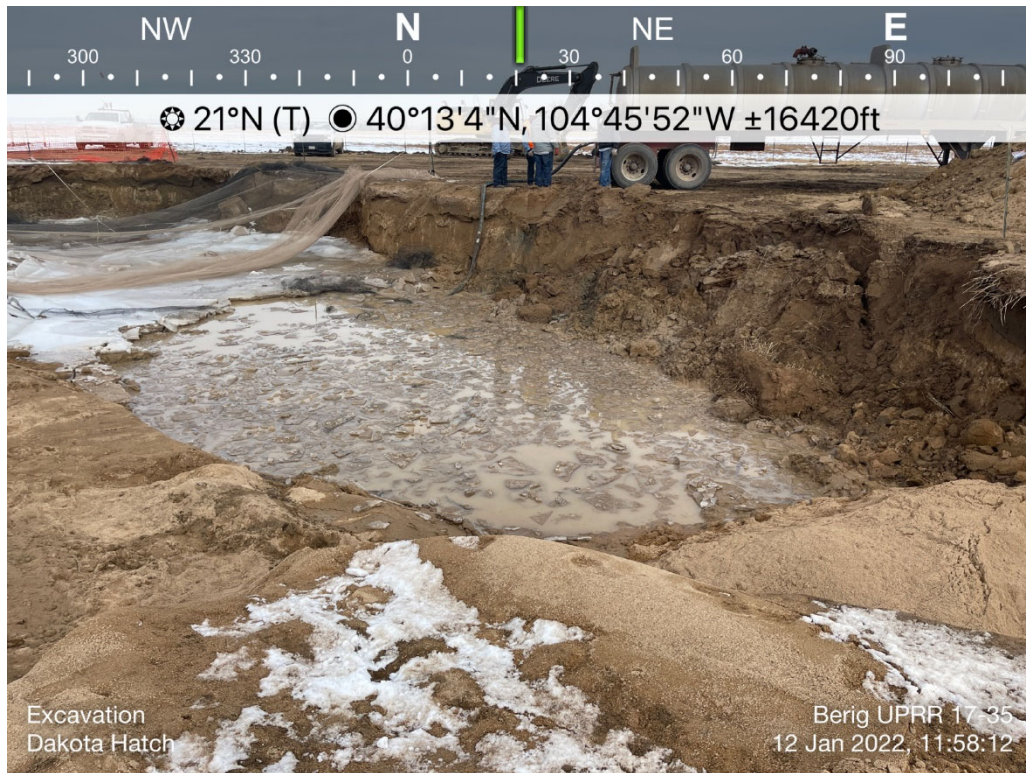


Release Excavation

**PHOTO LOG**  
**BERIG 17-35 & UP42-35 1 O SA FACILITY**  
**WELD COUNTY, COLORADO**  
**KERR-MCGEE OIL & GAS ONSHORE, LP**



PHOTO LOG  
 BERIG 17-35 & UP42-35 1 O SA FACILITY  
 WELD COUNTY, COLORADO  
 KERR-MCGEE OIL & GAS ONSHORE, LP



Release Excavation



Release Excavation

PHOTO LOG  
BERIG 17-35 & UP42-35 1 O SA FACILITY  
WELD COUNTY, COLORADO  
KERR-MCGEE OIL & GAS ONSHORE, LP



Release Excavation



Release Excavation

PHOTO LOG  
BERIG 17-35 & UP42-35 1 O SA FACILITY  
WELD COUNTY, COLORADO  
KERR-MCGEE OIL & GAS ONSHORE, LP



Release Excavation



Release Excavation

**PHOTO LOG**  
**BERIG 17-35 & UP42-35 1 O SA FACILITY**  
**WELD COUNTY, COLORADO**  
**KERR-MCGEE OIL & GAS ONSHORE, LP**



Release Excavation



Release Excavation