



Chevron RBU

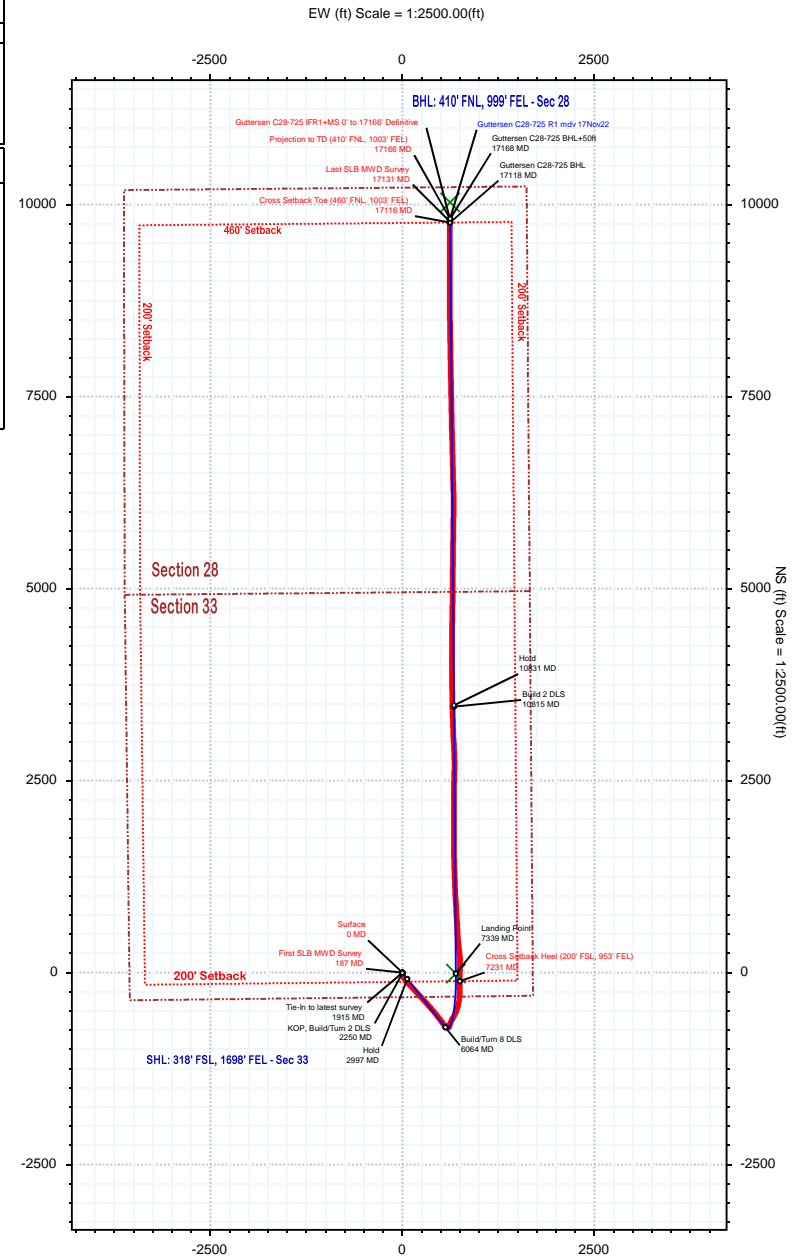
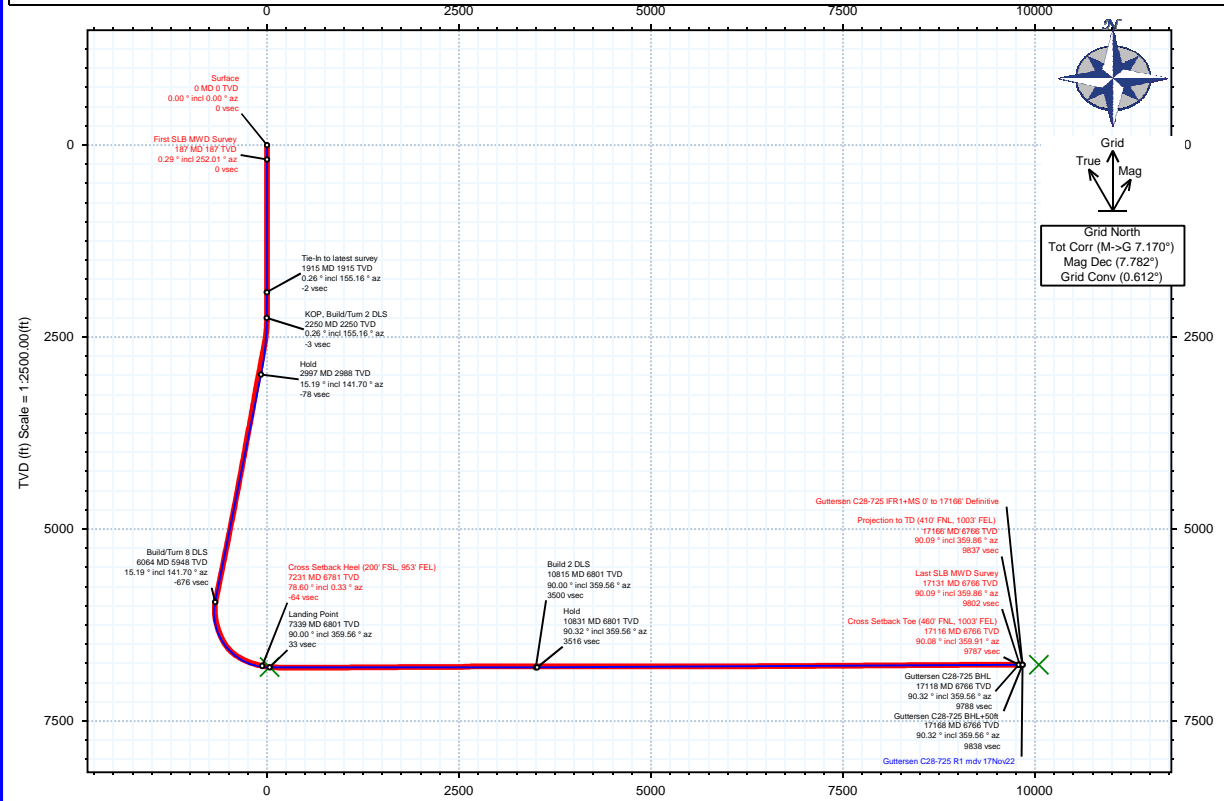


Borehole: Guttersen C28-725	Well: Guttersen C28-725	Field: CO, Weld County (NAD 83 NZ) - 2019	Structure: Chevron RBU 33-04N-64W (CC33-15 Pad)
---------------------------------------	-----------------------------------	---	---

Gravity & Magnetic Parameters			Surface Location			NAD83 Colorado State Plane, Northern Zone, US Feet			Miscellaneous		
Model: IFR	Dip: 66.54°	Date: 17-Nov-2022	Lat: N 40 15 45.43	Northing: 1339926.28ftUS	Grid Conv: 0.6121°	Slot: Guttersen C28-725	TVD Ref: KB 29ft(4745ft above MSL)				
MagDec: 7.782°	FS: 51685NT	Gravity FS: 999.03mgn (9.80665 Based)	Lon: W 104 33 9.47	Easting: 3264382ftUS	Scale Fact: 0.99995687	Plan: Guttersen C28-725 IFR1+MS 0' to 17166' Definitive					

Surface Location									
Northing:	1339926.283	Easting:	3264382.004	Latitude:	N 40 15 45.43	Longitude:	W 104 33 9.47	VSec Azimuth:	3.62
Target Description		Grid Coord				Local Coord			
Target Name	Latitude	Longitude	Northing	Easting	TVD	VSec	N(+)/S(-)	E(+)/W(-)	
CC33-15 Pad Sec 33-28 - SB	N 40 15 45.43	W 104 33 10.04	1339925.81	3264337.36	4745.00	-3.30	-0.48	-44.65	
CC33-15 Pad Sec 33-28	N 40 15 45.43	W 104 33 10.04	1339925.81	3264337.36	4745.00	-3.30	-0.48	-44.65	
Guttersen C28-725 BHL	N 40 17 24.47	W 104 33 0.08	1349955.23	3265002.32	6765.00	10048.56	10029.40	620.34	
Guttersen C28-725 LP	N 40 15 45.25	W 104 33 0.46	1339914.98	3265080.10	6795.00	32.80	-11.30	698.13	

Critical Points								
Critical Point	MD	INCL	AZIM	TVD	VSEC	N(+)/S(-)	E(+)/W(-)	DLS
Surface	0.00	0.00	0.00	0.00	0.00	0.00	0.00	
First SLB MWD Survey	187.00	0.29	252.01	187.00	-0.17	-0.15	-0.45	0.16
Cross Setback Heel (200' FSL, 953' FEL)	7231.38	78.60	0.33	6781.16	-63.51	-110.80	745.44	4.91
Cross Setback Toe (460' FNL, 1003' FEL)	17116.14	90.08	359.91	6765.58	9787.46	9767.90	618.43	0.32
Last SLB MWD	17131.00	90.09	359.86	6765.56	9802.29	9782.76	618.40	0.32
Projection to TD (410' FNL, 1003' FEL)	17166.00	90.09	359.86	6765.50	9837.21	9817.76	618.31	0.00



Vertical Section (ft) Azim = 3.62° Scale = 1:2500.00(ft) Origin = 0N+S, 0E/W



Guttersen C28-725 IFR1+MS 0' to 17166' Definitive Survey Geodetic Report (Def Survey)

Report Date: December 01, 2022 - 11:35 AM
Client: Chevron RBU
Field: CO, Weld County (NAD 83 NZ) - 2019
Structure / Slot: Chevron RBU 33-04N-64W (CC33-15 Pad) / Guttersen C28-725
Well: Guttersen C28-725
Borehole: Guttersen C28-725
UWI / API#: Unknown / 05-123-48933
Survey Name: Guttersen C28-725 IFR1+MS 0' to 17166' Definitive
Survey Date: November 17, 2022
Tort / AHD / DDI / ERD Ratio: 237.072 ° / 11531.591 ft / 6.839 / 1.694
Coordinate Reference System: NAD83 Colorado State Plane, Northern Zone, US Feet
Location Lat / Long: N 40° 15' 45.43200", W 104° 33' 9.46800"
Location Grid N/E Y/X: N 1339926.283 ftUS, E 3264382.004 ftUS
CRS Grid Convergence Angle: 0.6121 °
Grid Scale Factor: 0.99995687
Version / Patch: 2.10.833.1

Survey / DLS Computation: Minimum Curvature / Lubinski
Vertical Section Azimuth: 3.620 ° (Grid North)
Vertical Section Origin: 0.000 ft, 0.000 ft
TVD Reference Datum: KB 29ft
TVD Reference Elevation: 4745.000 ft above MSL
Seabed / Ground Elevation: 4716.000 ft above MSL
Magnetic Declination: 7.782 °
Total Gravity Field Strength: 999.0301mgn (9.80665 Based)
Gravity Model: GARM
Total Magnetic Field Strength: 51685.000 nT
Magnetic Dip Angle: 66.540 °
Declination Date: November 17, 2022
Magnetic Declination Model: IFR
North Reference: Grid North
Grid Convergence Used: 0.6121 °
Total Corr Mag North->Grid North: 7.1699 °
Local Coord Referenced To: Well Head

Comments	MD (ft)	Incl (°)	Azim Grid (°)	TVD (ft)	VSEC (ft)	NS (ft)	EW (ft)	DLS (°/100ft)	Northing (ftUS)	Easting (ftUS)	Latitude (°)	Longitude (°)
Surface	0.00	0.00	0.00	0.00	0.00	0.00	0.00	N/A	1339926.28	3264382.00	40.262620	-104.552630
First SLB MWD Survey	187.00	0.29	252.01	187.00	-0.17	-0.15	-0.45	0.16	1339926.14	3264381.55	40.262620	-104.552632
	276.00	0.10	47.48	276.00	-0.20	-0.16	-0.61	0.43	1339926.12	3264381.40	40.262620	-104.552632
	372.00	0.30	278.84	372.00	-0.12	-0.07	-0.79	0.39	1339926.22	3264381.21	40.262620	-104.552633
	466.00	0.35	291.53	466.00	-0.01	0.08	-1.30	0.09	1339926.36	3264380.70	40.262620	-104.552635
	561.00	0.16	77.29	561.00	0.12	0.21	-1.44	0.52	1339926.49	3264380.56	40.262621	-104.552635
	656.00	0.28	297.94	656.00	0.25	0.35	-1.52	0.44	1339926.63	3264380.48	40.262621	-104.552635
	751.00	0.28	239.52	751.00	0.22	0.34	-1.93	0.29	1339926.62	3264380.08	40.262621	-104.552637
	846.00	0.27	189.92	845.99	-0.14	0.00	-2.16	0.24	1339926.28	3264379.84	40.262620	-104.552638
	940.00	0.12	47.14	939.99	-0.28	-0.15	-2.13	0.40	1339926.13	3264379.87	40.262620	-104.552638
	1035.00	0.32	148.92	1034.99	-0.43	-0.31	-1.92	0.38	1339925.97	3264380.08	40.262619	-104.552637
	1130.00	0.24	122.65	1129.99	-0.74	-0.64	-1.62	0.16	1339925.64	3264380.39	40.262618	-104.552636
	1225.00	0.15	102.85	1224.99	-0.86	-0.78	-1.33	0.12	1339925.50	3264380.68	40.262618	-104.552635
	1319.00	0.38	203.22	1318.99	-1.17	-1.09	-1.33	0.46	1339925.19	3264380.67	40.262617	-104.552635
	1414.00	0.38	176.93	1413.99	-1.78	-1.70	-1.44	0.18	1339924.59	3264380.57	40.262615	-104.552635
	1509.00	0.44	56.76	1508.99	-1.88	-1.81	-1.12	0.75	1339924.47	3264380.89	40.262615	-104.552634
	1604.00	0.48	74.84	1603.98	-1.53	-1.51	-0.43	0.16	1339924.78	3264381.58	40.262616	-104.552632
	1698.00	0.37	110.69	1697.98	-1.49	-1.51	0.24	0.30	1339924.77	3264382.24	40.262616	-104.552629
	1793.00	0.12	144.91	1792.98	-1.66	-1.70	0.58	0.29	1339924.58	3264382.59	40.262615	-104.552628
	1888.00	0.35	140.06	1887.98	-1.95	-2.01	0.83	0.24	1339924.28	3264382.83	40.262614	-104.552627
	1915.00	0.26	155.16	1914.98	-2.06	-2.12	0.90	0.44	1339924.16	3264382.91	40.262614	-104.552627
	1982.00	0.42	282.02	1981.98	-2.16	-2.21	0.73	0.91	1339924.07	3264382.73	40.262614	-104.552627
	2077.00	0.79	291.27	2076.97	-1.91	-1.90	-0.22	0.40	1339924.38	3264381.78	40.262615	-104.552631
	2172.00	1.17	292.98	2171.96	-1.39	-1.28	-1.73	0.40	1339925.00	3264380.28	40.262617	-104.552636
	2267.00	0.60	239.83	2266.95	-1.35	-1.16	-3.05	0.99	1339925.13	3264378.96	40.262617	-104.552641
	2361.00	3.83	167.66	2360.87	-4.64	-4.47	-2.80	3.93	1339921.81	3264379.20	40.262608	-104.552640
	2456.00	6.24	166.35	2455.50	-12.62	-12.59	-0.91	2.54	1339913.69	3264381.10	40.262585	-104.552634
	2551.00	9.42	161.40	2549.60	-24.75	-24.98	2.79	3.42	1339901.31	3264384.80	40.262551	-104.552621
	2646.00	12.19	158.01	2642.91	-41.00	-41.65	9.03	2.99	1339884.64	3264391.03	40.262505	-104.552599
	2740.00	13.18	158.26	2734.62	-59.63	-60.81	16.71	1.05	1339865.48	3264398.72	40.262453	-104.552572
	2835.00	13.30	139.94	2827.13	-77.33	-79.24	27.76	4.40	1339847.05	3264409.77	40.262402	-104.552534
	2930.00	14.47	140.72	2919.35	-93.93	-96.79	42.31	1.25	1339829.50	3264424.31	40.262353	-104.552482
	3025.00	14.96	143.94	3011.24	-112.06	-115.89	57.04	1.00	1339810.40	3264439.05	40.262300	-104.552430
	3120.00	14.83	139.51	3103.05	-130.22	-135.05	72.16	1.21	1339791.24	3264454.16	40.262247	-104.552377
	3214.00	14.85	135.00	3193.92	-146.82	-152.72	88.49	1.23	1339773.57	3264470.49	40.262198	-104.552319
	3309.00	14.49	134.60	3285.82	-162.67	-169.67	105.56	0.39	1339756.62	3264487.56	40.262151	-104.552258
	3404.00	13.96	137.02	3377.91	-178.33	-186.40	121.83	0.84	1339739.89	3264503.83	40.262105	-104.552201
	3499.00	14.63	138.21	3469.97	-194.63	-203.73	137.64	0.77	1339722.56	3264519.64	40.262057	-104.552145
	3593.00	14.29	138.08	3560.99	-211.09	-221.21	153.30	0.36	1339705.08	3264535.30	40.262008	-104.552089
	3688.00	14.92	137.77	3652.92	-227.82	-238.99	169.35	0.67	1339687.30	3264551.35	40.261959	-104.552032
	3783.00	15.17	138.25	3744.66	-245.07	-257.32	185.85	0.29	1339668.98	3264567.85	40.261908	-104.551974
	3878.00	15.23	138.28	3836.34	-262.57	-275.91	202.43	0.06	1339650.39	3264584.43	40.261857	-104.551915
	3973.00	14.43	138.07	3928.17	-279.63	-294.03	218.64	0.84	1339632.27	3264600.64	40.261807	-104.551858
	4067.00	14.48	134.59	4019.20	-295.54	-310.99	234.84	0.93	1339615.31	3264616.83	40.261760	-104.551801
	4162.00	15.04	137.19	4111.07	-311.83	-328.37	251.68	0.91	1339597.93	3264633.67	40.261711	-104.551741
	4257.00	14.81	137.99	4202.86	-328.81	-346.44	268.18	0.33	1339579.86	3264650.17	40.261661	-104.551682
	4352.00	15.31	137.42	4294.60	-345.98	-364.69	284.79	0.55	1339561.61	3264666.78	40.261611	-104.551624
	4447.00	14.71	139.38	4386.36	-363.31	-383.08	301.13	0.83	1339543.22	3264683.12	40.261560	-104.551566
	4541.00	14.66	138.23	4477.29	-380.21	-401.01	316.82	0.31	1339525.29	3264698.81	40.261510	-104.551510
	4636.00	15.37	140.67	4569.04	-397.87	-419.72	332.81	1.00	1339506.58	3264714.80	40.261458	-104.551454
	4731.00	15.07	135.27	4660.72	-415.29	-438.23	349.48	1.52	1339488.07	3264731.47	40.261407	-104.551395
	4826.00	15.12	139.68	4752.44	-432.42	-456.45	366.19	1.21	1339469.85	3264748.18	40.261356	-104.551335
	4920.00	15.60	141.45	4843.08	-450.62	-475.68	382.00	0.71	1339450.62	3264763.99	40.261303	-104.551280
	5015.00	15.34	135.71	4934.65	-468.51	-494.67	398.74	1.63	1339431.64	3264780.72	40.261251	-104.551220
	5110.00	14.94	140.61	5026.35	-485.89	-513.13	415.28	1.41	1339413.18	3264797.27	40.261199	-104.551162
	5205.00	15.02	139.97	5118.13	-503.75	-532.02	430.97	0.19	1339394.29	3264812.96	40.261147	-104.551106
	5299.00	14.99	143.56	5208.92	-521.87	-551.13	446.03	0.99	1339375.18	3264828.01	40.261094	-104.551053
	5394.00	15.00	143.40	5300.69	-540.66	-570.88	460.65	0.04	1339355.43	3264842.64	40.261040	-104.551001
	5489.00	15.12	142.60	5392.42	-559.39	-590.59	475.51	0.25	1339335.72	3264857.49	40.260985	-104.550949
	5584.00	14.85	142.84	5484.19	-577.96	-610.14	490.39	0.29	1339316.17	3264872.37	40.260931	-104.550896
	5678.00	15.58	140.78	5574.90	-596.34	-629.52	505.65	0.97	1339296.79	3264887.63	40.260877	-104.550842
	5773.00	15.06	140.97	5666.52	-614.77	-648.99	521.49	0.55	1339277.32	3264903.47	40.260823	-104.550786
	5868.00	15.98	140.76	5758.06	-633.43	-668.70	537.53	0.97	1339257.61	3264919.51	40.260769	-104.550730
	5963.00	15.79	141.56	5849.43	-652.61	-688.96	553.84	0.31	1339237.36	3264935.82	40.260713	-104.550672
	6058.00	15.41	139.34	5940.93	-671.25	-708.66	570.10	0.74	1339217.66	3264952.08	40.260658	-104.550615
	6152.00	11.98	98.14	6032.45	-680.98	-719.54	587.94	10.73	1339206.78	3264969.92	40.260628	-104.550551
	6247.00	8.06	45.17	6126.17	-676.76	-716.23	602.46	10.07	1339210.08	3264984.43	40.260636	-104.55049

Comments	MD (ft)	Incl (°)	Azim Grid (°)	TVD (ft)	VSEC (ft)	NS (ft)	EW (ft)	DLS (°/100ft)	Northing (ftUS)	Easting (ftUS)	Latitude (°)	Longitude (°)
Cross Setback Heel (200' FSL, 953' FEL)	7231.38	78.60	0.33	6781.16	-63.51	-110.80	745.44	4.91	1339815.49	3265127.41	40.262294	-104.549963
	7290.00	81.30	1.32	6791.39	-5.87	-53.09	746.27	4.91	1339873.19	3265128.24	40.262452	-104.549958
	7385.00	87.95	3.40	6800.28	88.63	41.35	750.17	7.33	1339967.63	3265132.14	40.262711	-104.549941
	7479.00	89.78	359.51	6802.14	182.53	135.28	752.56	4.57	1340061.56	3265134.53	40.262969	-104.549928
	7574.00	88.35	353.09	6803.70	276.69	230.02	746.43	6.92	1340156.29	3265128.40	40.263229	-104.549947
	7669.00	89.47	353.35	6805.50	370.11	324.33	735.22	1.21	1340250.60	3265117.19	40.263489	-104.549983
	7764.00	90.35	354.41	6805.65	463.74	418.79	725.09	1.45	1340345.05	3265107.06	40.263748	-104.550016
	7858.00	90.52	357.46	6804.94	556.88	512.54	718.43	3.25	1340438.80	3265100.40	40.264006	-104.550036
	7953.00	90.40	357.02	6804.18	651.29	607.43	713.86	0.48	1340533.68	3265095.83	40.264266	-104.550049
	8048.00	90.45	356.44	6803.47	745.60	702.27	708.44	0.61	1340628.52	3265090.41	40.264527	-104.550065
	8143.00	90.24	356.90	6802.90	839.90	797.11	702.92	0.53	1340723.35	3265084.89	40.264787	-104.550081
	8237.00	90.54	356.63	6802.26	933.22	890.95	697.61	0.43	1340817.20	3265079.59	40.265045	-104.550096
	8332.00	90.03	356.55	6801.79	1027.51	985.79	691.96	0.54	1340912.02	3265073.94	40.265305	-104.550113
	8427.00	90.42	357.57	6801.41	1121.88	1080.66	687.09	1.15	1341006.89	3265069.06	40.265566	-104.550127
	8522.00	90.08	358.12	6801.00	1216.40	1175.59	683.52	0.68	1341101.82	3265065.49	40.265827	-104.550136
	8616.00	90.30	357.86	6800.69	1309.95	1269.53	680.22	0.36	1341195.76	3265062.20	40.266085	-104.550144
	8711.00	90.45	357.81	6800.07	1404.46	1364.46	676.63	0.17	1341290.68	3265058.61	40.266345	-104.550153
	8806.00	90.38	358.85	6799.38	1499.05	1459.42	673.86	1.10	1341385.63	3265055.84	40.266606	-104.550160
	8901.00	90.68	359.26	6798.50	1593.75	1554.40	672.30	0.53	1341480.61	3265054.27	40.266867	-104.550162
	8995.00	90.44	359.12	6797.58	1687.46	1648.39	670.97	0.30	1341574.59	3265052.94	40.267125	-104.550163
	9090.00	90.30	359.94	6796.97	1782.22	1743.38	670.19	0.88	1341669.58	3265052.16	40.267386	-104.550162
	9185.00	90.60	0.31	6796.22	1877.04	1838.38	670.40	0.50	1341764.58	3265052.37	40.267646	-104.550157
	9280.00	89.41	359.92	6796.21	1971.86	1933.37	670.59	1.32	1341859.57	3265052.56	40.267907	-104.550153
	9374.00	90.06	0.12	6796.65	2065.67	2027.37	670.62	0.72	1341953.56	3265052.59	40.268165	-104.550149
	9469.00	89.85	0.02	6796.72	2160.49	2122.37	670.74	0.24	1342048.56	3265052.71	40.268426	-104.550145
	9564.00	89.75	0.24	6797.05	2255.31	2217.37	670.95	0.25	1342143.55	3265052.93	40.268687	-104.550141
	9659.00	90.03	0.87	6797.24	2350.17	2312.37	671.87	0.73	1342238.54	3265053.85	40.268947	-104.550134
	9753.00	91.22	0.31	6796.21	2444.03	2406.35	672.84	1.40	1342332.53	3265054.81	40.269205	-104.550127
	9848.00	91.89	1.46	6793.63	2538.89	2501.31	674.31	1.40	1342427.48	3265056.28	40.269466	-104.550118
	9943.00	92.39	1.99	6790.08	2633.77	2596.20	677.16	0.77	1342522.36	3265059.14	40.269726	-104.550104
	10038.00	90.48	0.36	6787.71	2728.65	2691.14	679.11	2.64	1342617.30	3265061.08	40.269987	-104.550094
	10132.00	89.62	357.98	6787.62	2822.36	2785.12	677.75	2.69	1342711.28	3265059.72	40.270245	-104.550095
	10227.00	89.96	357.91	6787.97	2916.89	2880.06	674.34	0.37	1342806.21	3265056.32	40.270505	-104.550103
	10322.00	90.05	356.75	6787.96	3011.32	2974.95	669.92	1.22	1342901.10	3265051.89	40.270766	-104.550116
	10417.00	89.99	357.64	6787.93	3105.72	3069.84	665.27	0.94	1342995.98	3265047.24	40.271027	-104.550129
	10512.00	90.12	358.27	6787.84	3200.25	3164.78	661.88	0.68	1343090.92	3265043.85	40.271287	-104.550137
	10606.00	90.11	357.64	6787.65	3293.79	3258.72	658.52	0.67	1343184.85	3265040.50	40.271545	-104.550146
	10701.00	90.21	358.39	6787.38	3388.34	3353.66	655.23	0.80	1343279.79	3265037.21	40.271806	-104.550154
	10796.00	90.21	358.65	6787.04	3482.96	3448.63	652.78	0.27	1343374.75	3265034.75	40.272067	-104.550159
	10891.00	90.19	358.96	6786.71	3577.63	3543.61	650.80	0.33	1343469.73	3265032.77	40.272327	-104.550162
	10984.00	90.24	359.45	6786.36	3670.35	3636.60	649.51	0.53	1343562.71	3265031.48	40.272583	-104.550163
	11080.00	90.00	358.94	6786.15	3766.06	3732.59	648.16	0.59	1343658.70	3265030.13	40.272846	-104.550164
	11175.00	90.03	359.66	6786.13	3860.79	3827.58	647.00	0.76	1343753.69	3265028.97	40.273107	-104.550165
	11270.00	89.82	359.36	6786.25	3955.55	3922.57	646.19	0.39	1343848.68	3265028.16	40.273368	-104.550164
	11365.00	90.02	0.39	6786.39	4050.34	4017.57	645.98	1.10	1343943.67	3265027.95	40.273628	-104.550161
	11460.00	89.92	359.99	6786.44	4145.17	4112.57	646.29	0.43	1344038.67	3265028.27	40.273889	-104.550157
	11554.00	90.03	359.94	6786.48	4238.98	4206.57	646.24	0.13	1344132.66	3265028.21	40.274147	-104.550153
	11649.00	90.05	0.17	6786.41	4333.80	4301.57	646.33	0.24	1344227.66	3265028.30	40.274408	-104.550149
	11744.00	89.98	0.53	6786.39	4428.64	4396.57	646.91	0.39	1344322.65	3265028.88	40.274669	-104.550143
	11839.00	89.98	0.69	6786.42	4523.51	4491.56	647.92	0.17	1344417.64	3265029.89	40.274929	-104.550136
	11933.00	90.02	0.92	6786.42	4617.40	4585.55	649.24	0.25	1344511.63	3265031.22	40.275187	-104.550128
	12028.00	90.12	1.42	6786.30	4712.31	4680.53	651.18	0.54	1344606.61	3265033.16	40.275448	-104.550117
	12123.00	90.02	0.64	6786.19	4807.21	4775.52	652.89	0.83	1344701.59	3265034.86	40.275709	-104.550107
	12217.00	90.02	359.99	6786.15	4901.06	4869.52	653.41	0.69	1344795.58	3265035.38	40.275967	-104.550102
	12312.00	89.99	0.65	6786.15	4995.90	4964.51	653.94	0.70	1344890.57	3265035.91	40.276227	-104.550096
	12407.00	90.01	0.52	6786.15	5090.79	5059.46	655.88	0.07	1344985.55	3265037.85	40.276489	-104.550082
	12502.00	89.85	0.64	6786.26	5185.63	5154.50	655.88	0.21	1345080.55	3265039.81	40.276749	-104.550075
	12596.00	89.85	0.64	6786.26	5279.50	5248.50	656.83	0.21	1345174.55	3265038.80	40.277007	-104.550075
	12691.00	89.99	0.48	6786.39	5374.36	5343.49	657.76	0.22	1345269.54	3265039.73	40.277268	-104.550068
	12786.00	89.95	0.88	6786.44	5469.24	5438.49	658.88	0.42	1345364.53	3265040.86	40.277528	-104.550061
	12880.00	89.98	0.59	6786.50	5563.12	5532.48	660.09	0.31	1345458.51	3265042.06	40.277786	-104.550053
	12975.00	89.92	1.15	6786.58	5658.01	5627.47	661.53	0.59	1345553.50	3265043.51	40.278047	-104.550044
	13070.00	90.00	0.10	6786.65	5752.88	5722.46	662.57	1.11	1345648.49	3265044.54	40.278308	-104.550036
	13164.00	89.90	359.83	6786.73	5846.69	5816.46	662.51	0.31	1345742.48	3265044.48	40.278566	-104.550033
	13259.00	90.12	2.95	6786.72	5941.60	5911.42	664.81	3.29	1345837.44	3265046.79	40.278826	-104.550021
	13354.00	90.18	0.24	6786.47	6036.53	6006.38	667.46	2.85	1345932.39	3265049.43	40.279087	-104.550008
	13449.00	90.28	0.55	6786.09	6131.38	6101.37	668.11	0.34	1346027.38	3265050.09	40.279347	-104.550002
	13543.00	90.24	358.32	6785.66	6225.13	6195.36	667.19	2.37	1346121.36	3265049.16	40.279605	-104.550002
	13638.00	90.16	358.53	6785.33	6319.73	6290.32	664.58	0.24	1346216.32	3265046.55	40.279866	-104.550007
	13733.00	90.23	358.35	6785.00	6414.35	6385.29	661.99	0.20	1346311.28	3265043.96	40.280127	-104.550013
	13828.00	90.37	358.93	6784.51	6508.99	6480.26	659.73	0.63	1346406.25	3265041.71	40.280388	-104.550017
	13922.00	90.05	358.25	6784.16	6602.62	6574.23	657.42	0.80	1346500.22	3265039.40	40.280646	-104.550022
	14017.00	90.12	358.59	6784.02	6697.23	6669.19	654.80	0.37	1346595.18	3265036.78	40.280906	-104.550028
	14112.00	90.31	359.09	6783.86	6791.90	6764.17	652.88	0.56	1346690.15	3265034.85	40.281167	-104.550031
	14207.00	90.46	358.34	6783.03	6886.55	6859.15	650.75	0.81	1346785.12	3265032.72	40.281428	-104.550035
	14301.00	90.38	358.47	6782.34	6980.16	6953.11	648.13	0.16	1346879.08	3265030.11	40.281686	-104.550041
	14396.00	90.49	358.52	6781.62	7074.77	7048.07	645.64	0.13	1346974.04	3265027.61	40.281947	-104.550046
	14491.00	90.43	358.27	6780.85	7169.38	7143.03	642.98	0.27	134			

Comments	MD (ft)	Incl (°)	Azim Grid (°)	TVD (ft)	VSEC (ft)	NS (ft)	EW (ft)	DLS (°/100ft)	Northing (ftUS)	Easting (ftUS)	Latitude (°)	Longitude (°)
Last SLB MWD Projection to TD (410' FNL, 1003' FEL)	17131.00	90.09	359.86	6765.56	9802.29	9782.76	618.40	0.32	1349708.61	3265000.37	40.289454	-104.550039
	17166.00	90.09	359.86	6765.50	9837.21	9817.76	618.31	0.00	1349743.60	3265000.29	40.289550	-104.550038

Survey Type: Def Survey

Survey Error Model: ISCWSA Rev 3 *** 3-D 97.071% Confidence 3.0000 sigma

Survey Program:

Description	Part	MD From (ft)	MD To (ft)	EOU Freq (ft)	Hole Size (in)	Casing Diameter (in)	Survey Tool Type	Borehole / Survey
	1	0.000	29.000	1/98.425	13.500	9.625	A008Mb_MWD+IFR1+MS-Depth Only	Guttersen C28-725 / Guttersen C28-725 IFR1+MS 0' to 17166' Definitive
	1	29.000	29.000	Act Stns	13.500	9.625	A008Mb_MWD+IFR1+MS-Depth Only	Guttersen C28-725 / Guttersen C28-725 IFR1+MS 0' to 17166' Definitive
	1	29.000	1915.000	Act Stns	13.500	9.625	A008Mb_MWD+IFR1+MS	Guttersen C28-725 / Guttersen C28-725 IFR1+MS 0' to 17166'
	1	1915.000	17166.000	Act Stns	8.500	5.500	A008Mb_MWD+IFR1+MS	Guttersen C28-725 / Guttersen C28-725 IFR1+MS 0' to 17166'