



Chevron RBU

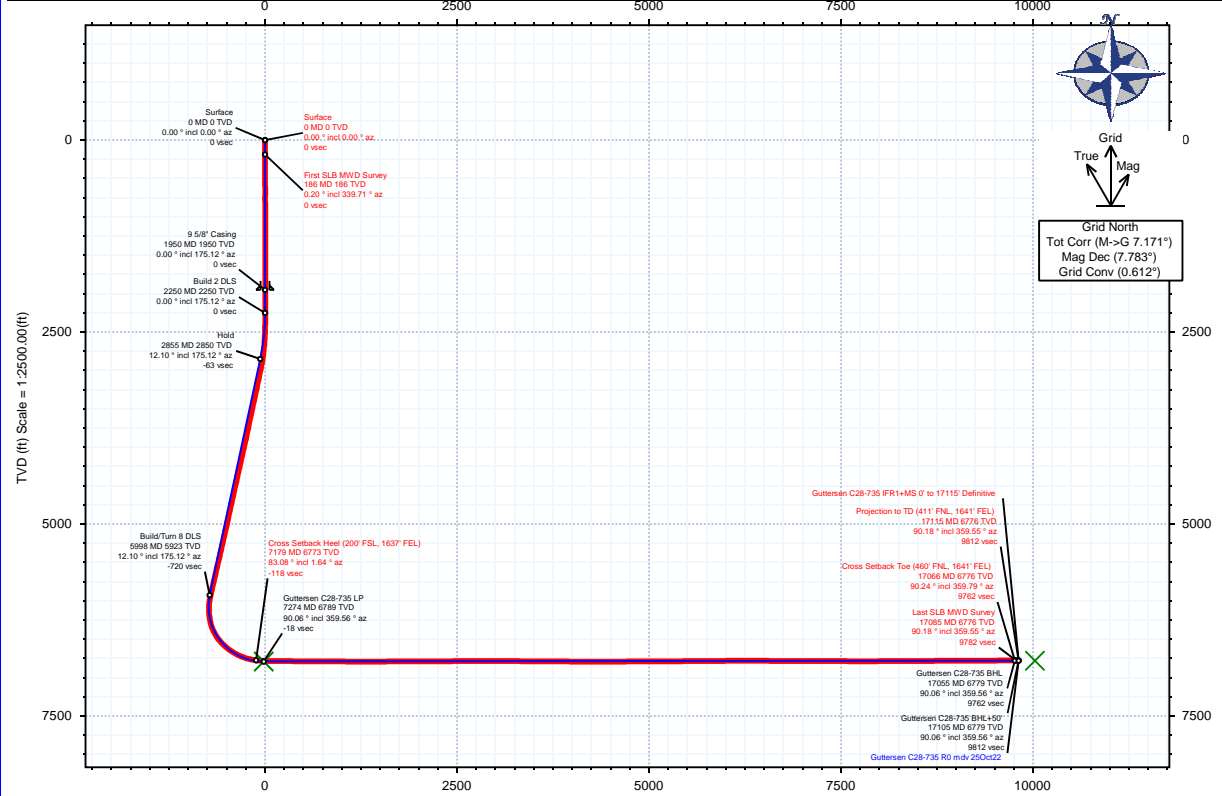


Borehole: Guttersen C28-735	Well: Guttersen C28-735	Field: CO, Weld County (NAD 83 NZ) - 2019	Structure: Chevron RBU 33-04N-64W (CC33-15 Pad)
---------------------------------------	-----------------------------------	---	---

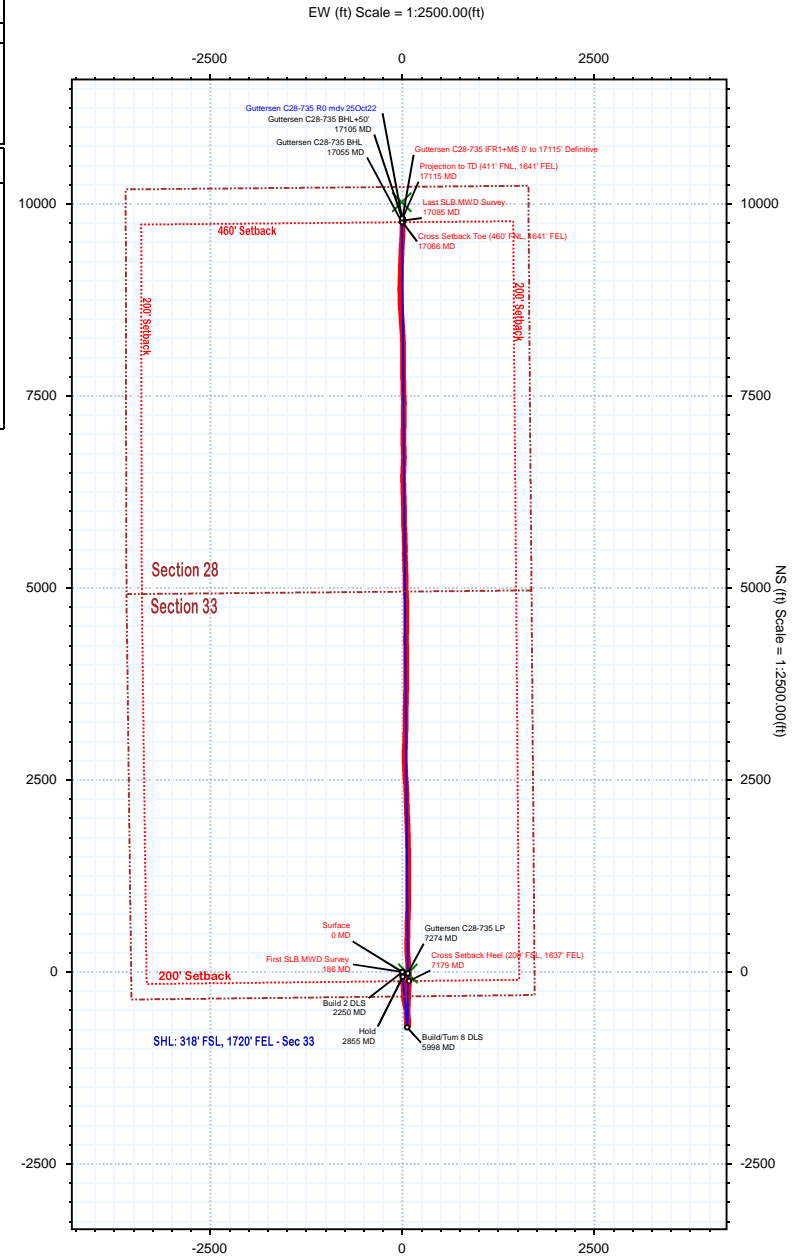
Gravity & Magnetic Parameters				Surface Location				NAD83 Colorado State Plane, Northern Zone, US Feet				Miscellaneous			
Model:	IFR	Dip:	66.54°	Date:	12-Nov-2022	Lat:	N 40 15 45.43	Northing:	1339926.04ftUS	Grid Conv:	0.6121°	Slot:	Guttersen C28-735	TVD Ref:	KB 29ft(4744ft above MSL)
MagDec:	7.783°	FS:	51686T	Gravity FS:	999.03mgn (9.80665 Based)	Lon:	W 104 33 9.76	Easting:	3264359.68ftUS	Scale Fact:	0.99995687	Plan:	Guttersen C28-735 IFR1+MS 0' to 17115' Definitive		

Surface Location									
Northing: 1339926.044			Easting: 3264359.679			Latitude: N 40 15 45.43			Longitude: W 104 33 9.76
VSec Azimuth: 359.97									
Target Description	Grid Coord				Local Coord				
	Latitude	Longitude	Northing	Easting	TVD	VSec	N(+)/S(-)	E(+)/W(-)	
CC33-15 Pad Sec 33-28 - SB	N 40 15 45.43	W 104 33 10.04	1339925.81	3264337.36	4744.00	-0.23	-0.24	-22.33	
CC33-15 Pad Sec 33-28	N 40 15 45.43	W 104 33 10.04	1339925.81	3264337.36	4744.00	-0.23	-0.24	-22.33	
Guttersen C28-735 BHL	N 40 17 24.48	W 104 33 8.45	1349949.02	3264353.55	6779.00	10023.43	10023.43	-6.13	
Guttersen C28-735 LP	N 40 15 45.24	W 104 33 8.85	1339907.71	3264430.14	6789.00	-18.37	-18.33	70.46	

Critical Points								
Critical Point	MD	INCL	AZIM	TVD	VSEC	N(+)/S(-)	E(+)/W(-)	DLS
Surface	0.00	0.00	0.00	0.00	0.00	0.00	0.00	
First SLB MWD Survey	186.00	0.20	339.71	186.00	0.30	0.30	-0.11	0.11
Cross Setback Heel (200' FSL, 1637' FEL)	7179.31	83.08	1.64	6772.56	-118.34	-118.30	84.74	7.80
Cross Setback Toe (460' FNL, 1641' FEL)	17065.96	90.24	359.79	6775.70	9762.50	9762.50	3.14	1.31
Last SLB MWD Survey	17085.00	90.18	359.55	6775.63	9781.53	9781.54	3.03	1.31
Projection to TD (411' FNL, 1641' FEL)	17115.00	90.18	359.55	6775.54	9811.53	9811.54	2.79	0.00



Vertical Section (ft) Azim = 359.97° Scale = 1:2500.00(ft) Origin = 0N/-S, 0E/-W



NS (ft) Scale = 1:2500.00(ft)



Guttersen C28-735 IFR1+MS 0' to 17115' Definitive Survey Geodetic Report (Def Survey)

Report Date: December 01, 2022 - 09:38 AM
Client: Chevron RBU
Field: CO, Weld County (NAD 83 NZ) - 2019
Structure / Slot: Chevron RBU 33-04N-64W (CC33-15 Pad) / Guttersen C28-735
Well: Guttersen C28-735
Borehole: Guttersen C28-735
UWI / API#: Unknown / 05-123-48932
Survey Name: Guttersen C28-735 IFR1+MS 0' to 17115' Definitive
Survey Date: November 12, 2022
Tort / AHD / DDI / ERD Ratio: 324.229 ° / 11302.460 ft / 6.965 / 1.664
Coordinate Reference System: NAD83 Colorado State Plane, Northern Zone, US Feet
Location Lat / Long: N 40° 15' 45.43200", W 104° 33' 9.75600"
Location Grid N/E Y/X: N 1339926.044 ftUS, E 3264359.679 ftUS
CRS Grid Convergence Angle: 0.6121 °
Grid Scale Factor: 0.99995687
Version / Patch: 2.10.833.1

Survey / DLS Computation: Minimum Curvature / Lubinski
Vertical Section Azimuth: 359.970 ° (Grid North)
Vertical Section Origin: 0.000 ft, 0.000 ft
TVD Reference Datum: KB 29ft
TVD Reference Elevation: 4744.000 ft above MSL
Seabed / Ground Elevation: 4715.000 ft above MSL
Magnetic Declination: 7.783 °
Total Gravity Field Strength: 999.0302mgn (9.80665 Based)
Gravity Model: GARM
Total Magnetic Field Strength: 51686.000 nT
Magnetic Dip Angle: 66.540 °
Declination Date: November 12, 2022
Magnetic Declination Model: IFR
North Reference: Grid North
Grid Convergence Used: 0.6121 °
Total Corr Mag North->Grid North: 7.1709 °
Local Coord Referenced To: Well Head

Comments	MD (ft)	Incl (°)	Azim Grid (°)	TVD (ft)	VSEC (ft)	NS (ft)	EW (ft)	DLS (°/100ft)	Northing (ftUS)	Easting (ftUS)	Latitude (°)	Longitude (°)
Surface	0.00	0.00	0.00	0.00	0.00	0.00	0.00	N/A	1339926.04	3264359.68	40.262620	-104.552710
First SLB MWD Survey	186.00	0.20	339.71	186.00	0.30	0.30	-0.11	0.11	1339926.35	3264359.57	40.262621	-104.552710
	278.00	0.22	323.50	278.00	0.60	0.60	-0.27	0.07	1339926.64	3264359.41	40.262622	-104.552711
	372.00	0.14	78.69	372.00	0.76	0.76	-0.27	0.33	1339926.81	3264359.41	40.262622	-104.552711
	466.00	0.24	28.83	466.00	0.96	0.96	-0.06	0.20	1339927.00	3264359.62	40.262623	-104.552710
	561.00	0.45	359.23	561.00	1.51	1.51	0.03	0.28	1339927.55	3264359.71	40.262624	-104.552710
	656.00	0.15	100.43	656.00	1.86	1.86	0.15	0.53	1339927.90	3264359.83	40.262625	-104.552709
	751.00	0.10	124.62	751.00	1.79	1.79	0.34	0.08	1339927.83	3264360.02	40.262625	-104.552709
	846.00	0.46	309.23	846.00	1.98	1.98	0.11	0.59	1339928.03	3264359.79	40.262625	-104.552710
	940.00	0.46	337.54	940.00	2.57	2.57	-0.33	0.24	1339928.61	3264359.35	40.262627	-104.552711
	1035.00	0.47	284.01	1035.00	3.02	3.02	-0.85	0.44	1339929.06	3264358.83	40.262628	-104.552713
	1130.00	0.36	237.52	1130.00	2.95	2.95	-1.48	0.36	1339928.99	3264358.20	40.262628	-104.552715
	1225.00	0.36	245.37	1225.00	2.67	2.67	-2.00	0.05	1339928.71	3264357.68	40.262627	-104.552717
	1319.00	0.10	34.74	1319.00	2.61	2.61	-2.22	0.48	1339928.65	3264357.46	40.262627	-104.552718
	1414.00	0.34	252.52	1414.00	2.59	2.59	-2.45	0.45	1339928.64	3264357.23	40.262627	-104.552719
	1509.00	0.21	88.71	1509.00	2.51	2.51	-2.54	0.57	1339928.56	3264357.14	40.262627	-104.552719
	1604.00	0.36	91.56	1604.00	2.51	2.51	-2.07	0.16	1339928.55	3264357.61	40.262627	-104.552717
	1698.00	0.41	14.27	1698.00	2.83	2.83	-1.69	0.51	1339928.87	3264357.99	40.262628	-104.552716
	1793.00	0.19	228.44	1793.00	3.05	3.05	-1.72	0.61	1339929.10	3264357.96	40.262628	-104.552716
	1888.00	0.10	129.81	1888.00	2.89	2.89	-1.78	0.24	1339928.94	3264357.90	40.262628	-104.552716
	1924.00	0.19	336.72	1924.00	2.93	2.93	-1.78	0.79	1339928.97	3264357.90	40.262628	-104.552716
	1980.00	0.40	297.65	1980.00	3.11	3.11	-1.99	0.50	1339929.15	3264357.69	40.262629	-104.552717
	2170.00	0.42	313.57	2170.00	3.89	3.89	-3.08	0.06	1339929.94	3264356.60	40.262631	-104.552721
	2265.00	0.54	258.17	2265.00	4.04	4.04	-3.77	0.48	1339930.08	3264355.91	40.262631	-104.552723
	2360.00	1.19	205.15	2360.00	3.06	3.06	-4.63	1.02	1339929.10	3264355.05	40.262629	-104.552726
	2454.00	1.96	189.37	2454.00	0.59	0.59	-5.30	0.93	1339926.63	3264354.38	40.262622	-104.552729
	2549.00	2.38	185.15	2549.00	-2.98	-2.98	-5.75	0.47	1339923.06	3264353.93	40.262612	-104.552731
	2644.00	4.32	180.53	2644.00	-8.52	-8.52	-5.96	2.06	1339917.52	3264353.72	40.262597	-104.552732
	2739.00	6.09	180.53	2739.00	-17.14	-17.14	-6.04	1.86	1339908.90	3264353.64	40.262573	-104.552732
	2834.00	8.38	179.79	2834.00	-29.10	-29.10	-6.06	2.41	1339896.94	3264353.62	40.262540	-104.552733
	2928.00	11.08	172.93	2928.00	-44.92	-44.92	-4.92	3.12	1339881.12	3264354.76	40.262497	-104.552729
	3023.00	12.94	170.24	3023.00	-64.46	-64.46	-1.99	2.04	1339861.58	3264357.69	40.262443	-104.552720
	3118.00	11.63	171.94	3118.00	-84.43	-84.43	1.15	1.43	1339841.62	3264360.83	40.262388	-104.552709
	3213.00	11.63	172.40	3213.00	-103.41	-103.41	3.76	0.10	1339822.65	3264363.44	40.262336	-104.552700
	3307.00	12.04	171.02	3307.00	-122.48	-122.48	6.55	0.53	1339803.57	3264366.22	40.262284	-104.552691
	3402.00	12.55	170.72	3402.00	-142.46	-142.46	9.76	0.54	1339783.60	3264369.44	40.262229	-104.552680
	3497.00	12.08	170.14	3497.00	-162.44	-162.44	13.12	0.51	1339763.62	3264372.80	40.262174	-104.552669
	3592.00	12.38	167.58	3592.00	-182.17	-182.17	17.02	0.65	1339743.88	3264376.69	40.262119	-104.552656
	3686.00	12.03	185.16	3686.00	-201.78	-201.78	18.30	3.96	1339724.28	3264377.98	40.262066	-104.552652
	3781.00	11.85	177.89	3781.00	-221.39	-221.39	17.77	1.59	1339704.67	3264377.45	40.262012	-104.552655
	3876.00	11.94	176.54	3876.00	-240.95	-240.94	18.72	0.31	1339685.11	3264378.40	40.261958	-104.552652
	3971.00	13.21	175.98	3971.00	-261.59	-261.58	20.08	1.34	1339664.48	3264379.76	40.261901	-104.552648
	4066.00	12.47	180.10	4066.00	-282.67	-282.66	20.82	1.24	1339643.39	3264380.50	40.261844	-104.552646
	4160.00	12.86	177.97	4160.00	-303.28	-303.27	21.17	0.65	1339622.79	3264380.85	40.261787	-104.552646
	4255.00	12.22	180.30	4255.00	-323.90	-323.89	21.50	0.86	1339602.17	3264381.17	40.261730	-104.552645
	4350.00	13.10	170.37	4350.00	-344.57	-344.56	23.24	2.47	1339581.50	3264382.92	40.261674	-104.552640
	4445.00	12.97	168.69	4445.00	-365.64	-365.63	27.14	0.42	1339560.43	3264386.81	40.261616	-104.552627
	4540.00	12.93	168.15	4540.00	-386.50	-386.48	31.41	0.13	1339539.58	3264391.09	40.261558	-104.552612
	4634.00	12.68	170.80	4634.00	-406.98	-406.96	35.22	0.68	1339519.10	3264394.90	40.261502	-104.552599
	4729.00	12.60	168.52	4729.00	-427.43	-427.41	38.95	0.53	1339498.66	3264398.63	40.261446	-104.552587
	4824.00	12.84	167.41	4824.00	-447.89	-447.86	43.31	0.36	1339478.20	3264402.99	40.261389	-104.552572
	4919.00	12.87	168.10	4919.00	-468.54	-468.52	47.79	0.16	1339457.55	3264407.47	40.261333	-104.552557
	5013.00	12.80	167.46	5013.00	-488.95	-488.93	52.21	0.17	1339437.14	3264411.89	40.261276	-104.552542
	5108.00	12.68	183.61	5108.00	-509.64	-509.61	53.84	3.74	1339416.46	3264413.52	40.261220	-104.552537
	5203.00	12.41	181.85	5203.00	-530.25	-530.22	52.86	0.49	1339395.85	3264412.53	40.261163	-104.552541
	5298.00	12.77	176.33	5298.00	-550.93	-550.90	53.20	1.32	1339375.17	3264412.88	40.261106	-104.552540
	5392.00	12.91	173.77	5392.00	-571.74	-571.71	55.00	0.62	1339354.36	3264414.68	40.261049	-104.552535
	5487.00	12.83	178.59	5487.00	-592.83	-592.80	56.41	1.13	1339333.27	3264416.09	40.260991	-104.552531
	5582.00	13.09	176.69	5582.00	-614.12	-614.09	57.30	0.53	1339311.98	3264416.97	40.260933	-104.552528
	5677.00	13.05	178.72	5677.00	-635.58	-635.55	58.16	0.49	1339290.52	3264417.83	40.260874	-104.552526
	5771.00	12.94	179.37	5771.00	-656.71	-656.68	58.51	0.19	1339269.39	3264418.18	40.260816	-104.552526
	5866.00	12.85	178.72	5866.00	-677.91	-677.88	58.86	0.18	1339248.19	3264418.54	40.260758	-104.552525
	5961.00	12.69	177.32	5961.00	-698.90	-698.87	59.59	0.37	1339227.21	3264419.26	40.260700	-104.552523
	6056.00	11.51	176.50	6056.00	-718.78	-718.75	60.65	1.26	1339207.33	3264420.33	40.260645	-104.552520
	6151.00	2.27	170.56	6151.00	-730.12	-730.09	61.54	9.74	1339195.99	3264421.22	40.260614	-104.552517
	6245.00	5.86	30.59	6245.00	-727.83	-727.79	64.29	8.23	1339198.28	3264423.97	40.260620	-104.552508
	6340.00	11.63	24.99	6340.00	-714.97	-714.93	70.81	6.13	1339211.15	3264430.49	40.260656	-104.552484
	6435.00	21.51	6.25									

Comments	MD (ft)	Incl (°)	Azim (°)	Grid (ft)	TVD (ft)	VSEC (ft)	NS (ft)	EW (ft)	DLS (°/100ft)	Northing (ftUS)	Easting (ftUS)	Latitude (°)	Longitude (°)
	7193.00	84.12	1.41	6774.09	-104.74	-104.70	-104.70	85.10	7.80	1339821.35	3264444.77	40.262330	-104.552430
	7288.00	87.77	355.61	6780.81	-10.07	-10.03	-10.03	82.62	7.20	1339916.02	3264442.30	40.262590	-104.552414
	7383.00	89.47	357.11	6783.00	84.71	84.75	84.75	76.60	2.39	1340010.79	3264436.27	40.262850	-104.552432
	7478.00	89.76	356.04	6783.74	179.54	179.57	179.57	70.92	1.17	1340105.61	3264430.60	40.263111	-104.552449
	7572.00	89.53	356.80	6784.32	273.35	273.39	273.39	65.05	0.84	1340199.42	3264424.73	40.263368	-104.552466
	7667.00	89.40	1.33	6785.21	368.31	368.35	368.35	63.50	4.77	1340294.37	3264423.18	40.263629	-104.552468
	7762.00	89.44	1.26	6786.17	463.28	463.32	463.32	65.65	0.08	1340389.34	3264425.32	40.263890	-104.552457
	7857.00	89.60	0.96	6786.97	558.26	558.30	558.30	67.49	0.36	1340484.32	3264427.16	40.264150	-104.552447
	7951.00	89.92	1.59	6787.36	652.24	652.27	652.27	69.58	0.75	1340578.29	3264429.26	40.264408	-104.552436
	8046.00	89.78	1.81	6787.61	747.19	747.23	747.23	72.40	0.27	1340673.24	3264432.07	40.264669	-104.552422
	8141.00	89.62	0.70	6788.11	842.17	842.20	842.20	74.48	1.18	1340768.21	3264434.15	40.264930	-104.552411
	8236.00	89.67	359.75	6788.70	937.16	937.20	937.20	74.85	1.00	1340863.20	3264434.53	40.265190	-104.552406
	8330.00	89.75	0.13	6789.17	1031.16	1031.20	1031.20	74.75	0.41	1340957.20	3264434.43	40.265448	-104.552403
	8425.00	89.76	1.63	6789.58	1126.14	1126.18	1126.18	76.21	1.58	1341052.18	3264435.89	40.265709	-104.552394
	8520.00	89.41	359.49	6790.27	1221.13	1221.17	1221.17	77.14	2.28	1341147.16	3264436.82	40.265970	-104.552387
	8615.00	90.40	0.10	6790.42	1316.13	1316.17	1316.17	76.80	1.22	1341242.15	3264436.48	40.266230	-104.552384
	8709.00	90.05	359.90	6790.05	1410.13	1410.17	1410.17	76.80	0.43	1341336.15	3264436.48	40.266498	-104.552381
	8804.00	90.44	359.17	6789.65	1505.12	1505.16	1505.16	76.03	0.87	1341431.14	3264435.71	40.266749	-104.552380
	8899.00	90.22	358.66	6789.10	1600.11	1600.14	1600.14	74.23	0.58	1341526.12	3264433.91	40.267010	-104.552383
	8994.00	90.52	359.69	6788.49	1695.09	1695.13	1695.13	72.86	1.13	1341621.10	3264432.54	40.267271	-104.552384
	9088.00	90.27	357.76	6787.84	1789.06	1789.10	1789.10	70.77	2.07	1341715.06	3264430.45	40.267529	-104.552388
	9183.00	90.22	357.95	6787.43	1884.00	1884.03	1884.03	67.22	0.21	1341809.99	3264426.89	40.267789	-104.552397
	9278.00	90.20	357.36	6787.08	1978.92	1978.95	1978.95	63.33	0.62	1341904.91	3264423.00	40.268050	-104.552407
	9373.00	90.38	358.70	6786.60	2073.86	2073.89	2073.89	60.06	1.42	1341999.84	3264419.74	40.268311	-104.552415
	9467.00	90.02	358.26	6786.28	2167.83	2167.86	2167.86	57.57	0.60	1342093.81	3264417.25	40.268569	-104.552421
	9562.00	90.15	358.88	6786.13	2262.80	2262.83	2262.83	55.20	0.67	1342188.77	3264414.88	40.268829	-104.552426
	9657.00	90.51	358.37	6785.59	2357.77	2357.80	2357.80	52.92	0.66	1342283.74	3264412.60	40.269090	-104.552430
	9752.00	90.21	354.86	6784.99	2452.59	2452.62	2452.62	47.31	3.71	1342378.55	3264406.99	40.269351	-104.552447
	9847.00	90.35	356.75	6784.53	2547.34	2547.36	2547.36	40.36	1.99	1342473.29	3264400.04	40.269611	-104.552468
	9941.00	90.26	356.55	6784.03	2641.18	2641.20	2641.20	34.87	0.23	1342567.12	3264394.55	40.269869	-104.552484
	10036.00	90.25	0.07	6783.60	2736.12	2736.14	2736.14	32.07	3.71	1342662.06	3264391.75	40.270129	-104.552490
	10131.00	90.19	358.70	6783.24	2831.13	2831.13	2831.13	31.05	1.44	1342757.05	3264390.73	40.270390	-104.552490
	10226.00	90.12	4.09	6782.98	2926.05	2926.07	2926.07	33.36	5.67	1342851.98	3264393.04	40.270651	-104.552478
	10320.00	89.62	1.12	6783.19	3019.94	3019.96	3019.96	37.63	3.20	1342945.87	3264397.31	40.270908	-104.552460
	10415.00	89.66	1.90	6783.79	3114.90	3114.92	3114.92	40.14	0.82	1343040.83	3264399.81	40.271169	-104.552447
	10510.00	89.61	0.19	6784.40	3209.88	3209.90	3209.90	41.87	1.80	1343135.80	3264401.54	40.271429	-104.552437
	10605.00	89.62	0.38	6785.03	3304.88	3304.89	3304.89	42.34	0.20	1343230.79	3264402.02	40.271690	-104.552432
	10700.00	89.60	0.87	6785.68	3399.89	3399.89	3399.89	43.38	0.52	1343325.78	3264403.05	40.271951	-104.552424
	10794.00	89.74	0.77	6786.22	3493.85	3493.88	3493.88	44.72	0.18	1343419.76	3264404.40	40.272209	-104.552416
	10889.00	89.58	2.15	6786.79	3588.82	3588.84	3588.84	47.14	1.46	1343514.73	3264406.82	40.272469	-104.552404
	10984.00	89.72	0.76	6787.37	3683.78	3683.81	3683.81	49.55	1.47	1343609.69	3264409.23	40.272730	-104.552391
	11079.00	89.43	359.93	6788.07	3778.80	3778.80	3778.80	50.13	0.93	1343704.68	3264409.80	40.272991	-104.552386
	11174.00	89.65	1.21	6788.83	3873.79	3873.79	3873.79	51.07	1.37	1343799.66	3264410.75	40.273251	-104.552379
	11269.00	89.80	358.26	6789.29	3968.75	3968.75	3968.75	50.63	3.11	1343894.65	3264410.31	40.273512	-104.552377
	11363.00	89.62	1.66	6789.77	4062.74	4062.77	4062.77	50.57	3.62	1343989.63	3264410.24	40.273770	-104.552373
	11458.00	89.62	359.57	6790.40	4157.73	4157.75	4157.75	51.59	2.20	1344083.61	3264411.26	40.274031	-104.552366
	11553.00	89.72	357.81	6790.94	4252.70	4252.72	4252.72	49.41	1.86	1344178.58	3264409.09	40.274291	-104.552370
	11648.00	89.97	0.92	6791.20	4347.68	4347.71	4347.71	48.36	3.28	1344273.55	3264408.04	40.274552	-104.552370
	11742.00	89.97	0.44	6791.25	4441.67	4441.70	4441.70	49.48	0.51	1344367.54	3264409.15	40.274810	-104.552363
	11837.00	90.54	0.38	6790.83	4536.69	4536.69	4536.69	50.16	0.60	1344462.53	3264409.83	40.275071	-104.552357
	11932.00	90.63	0.05	6789.86	4631.66	4631.69	4631.69	50.51	0.36	1344557.52	3264410.19	40.275332	-104.552352
	12026.00	90.29	0.40	6789.10	4725.66	4725.68	4725.68	50.88	0.52	1344651.52	3264410.56	40.275590	-104.552347
	12121.00	90.22	358.70	6788.68	4820.65	4820.68	4820.68	50.14	1.79	1344746.50	3264409.81	40.275850	-104.552346
	12216.00	90.57	357.02	6788.02	4915.58	4915.61	4915.61	46.59	1.81	1344841.43	3264406.27	40.276111	-104.552355
	12310.00	90.29	359.63	6787.32	5009.53	5009.55	5009.55	43.84	2.79	1344935.37	3264403.52	40.276369	-104.552361
	12405.00	90.31	0.09	6786.82	5104.53	5104.55	5104.55	43.61	0.48	1345030.37	3264403.29	40.276630	-104.552358
	12500.00	90.35	356.16	6786.27	5199.46	5199.48	5199.48	40.50	4.14	1345125.29	3264400.18	40.276890	-104.552366
	12595.00	90.18	359.85	6785.83	5294.39	5294.41	5294.41	37.20	3.89	1345220.21	3264396.87	40.277151	-104.552374
	12689.00	90.28	356.16	6785.46	5388.31	5388.33	5388.33	33.92	3.93	1345314.13	3264393.60	40.277409	-104.552382
	12784.00	90.67	2.63	6784.67	5483.26	5483.27	5483.27	32.92	6.82	1345409.07	3264392.60	40.277670	-104.552382
	12879.00	90.26	356.42	6783.90	5578.20	5578.22	5578.22	32.13	6.55	1345504.01	3264391.81	40.277930	-104.552381
	12973.00	90.62	0.05	6783.17	5672.14	5672.16	5672.16	29.24	3.88	1345597.94	3264388.92	40.278188	-104.552388
	13068.00	90.49	355.67	6782.25	5767.05	5767.06	5767.06	25.69	4.61	1345692.85	3264385.37	40.278449	-104.552397
	13163.00	90.50	0.07	6781.43	5861.96	5861.97	5861.97	22.16	4.63	1345787.75	3264381.84	40.278709	-104.552406
	13258.00	90.08	0.46	6780.95	5956.96	5956.97	5956.97	22.60	0.60	1345882.74	3264382.28	40.278970	-104.552401
	13353.00	90.27	357.93	6780.66	6051.94	6051.95	6051.95	21.27	2.67	1345977.72	3264380.95	40.279231	-104.552402
	13447.00	90.17	358.10	6780.30	6145.88	6145.89	6145.89	18.01	0.21	1346071.66	3264377.69	40.279489	-104.552410
	13542.00	90.00	358.32	6780.16	6240.84	6240.85	6240.85	15.04	0.29	1346166.61	3264374.72	40.279749	-104.552417
	13637.00	89.84	358.24	6780.29	6335.80	6335.80	6335.80	12.19	0.19	1346261.56	3264371.87	40.280010	-104.552424
	13731.00	89.85	359.84	6780.55	6429.78	6429.79	6429.79	10.62	1.70	1346355.54	3264370.30	40.280268	-104.552426
	13826.00	89.83	2.13	6780.81	6524.76	6524.77	6524.77	12.25	2.41	1346450.52	3264371.93	40.280529	-104.552416
	13921.00	89.72	3.77	6781.19	6619.63	6619.64	6619.64	17.14	1.73	1346545.38	3264376.82	40.280789	-104.552395
	14016.00	89.58	359.49	6781.77	6714.56	6714.57	6714.57	19.84	4.51	1346640.32	3264379.52	40.2810	

Comments	MD (ft)	Incl (°)	Azim Grid (°)	TVD (ft)	VSEC (ft)	NS (ft)	EW (ft)	DLS (°/100ft)	Northing (ftUS)	Easting (ftUS)	Latitude (°)	Longitude (°)
Last SLB MWD Survey	17085.00	90.18	359.55	6775.63	9781.53	9781.54	3.03	1.31	1349707.14	3264362.71	40.289468	-104.552325
Projection to TD (411' FNL, 1641' FEL)	17115.00	90.18	359.55	6775.54	9811.53	9811.54	2.79	0.00	1349737.14	3264362.47	40.289551	-104.552324

Survey Type: Def Survey

Survey Error Model: ISCWSA Rev 3 *** 3-D 97.071% Confidence 3.0000 sigma

Survey Program:

Description	Part	MD From (ft)	MD To (ft)	EOU Freq (ft)	Hole Size (in)	Casing Diameter (in)	Survey Tool Type	Borehole / Survey
	1	0.000	29.000	1/98.425	13.500	9.625	A005Mb_MWD+IFR1-Depth Only	Guttersen C28-735 / Guttersen C28-735 IFR1+MS 0' to 17115' Definitive
	1	29.000	29.000	Act Stns	13.500	9.625	A005Mb_MWD+IFR1-Depth Only	Guttersen C28-735 / Guttersen C28-735 IFR1+MS 0' to 17115' Definitive
	1	29.000	1924.000	Act Stns	13.500	9.625	A005Mb_MWD+IFR1	Guttersen C28-735 / Guttersen C28-735 IFR1+MS 0' to 17115' Definitive
	1	1924.000	17115.000	Act Stns	8.500	5.500	A008Mb_MWD+IFR1+MS	Guttersen C28-735 / Guttersen C28-735 IFR1+MS 0' to 17115'