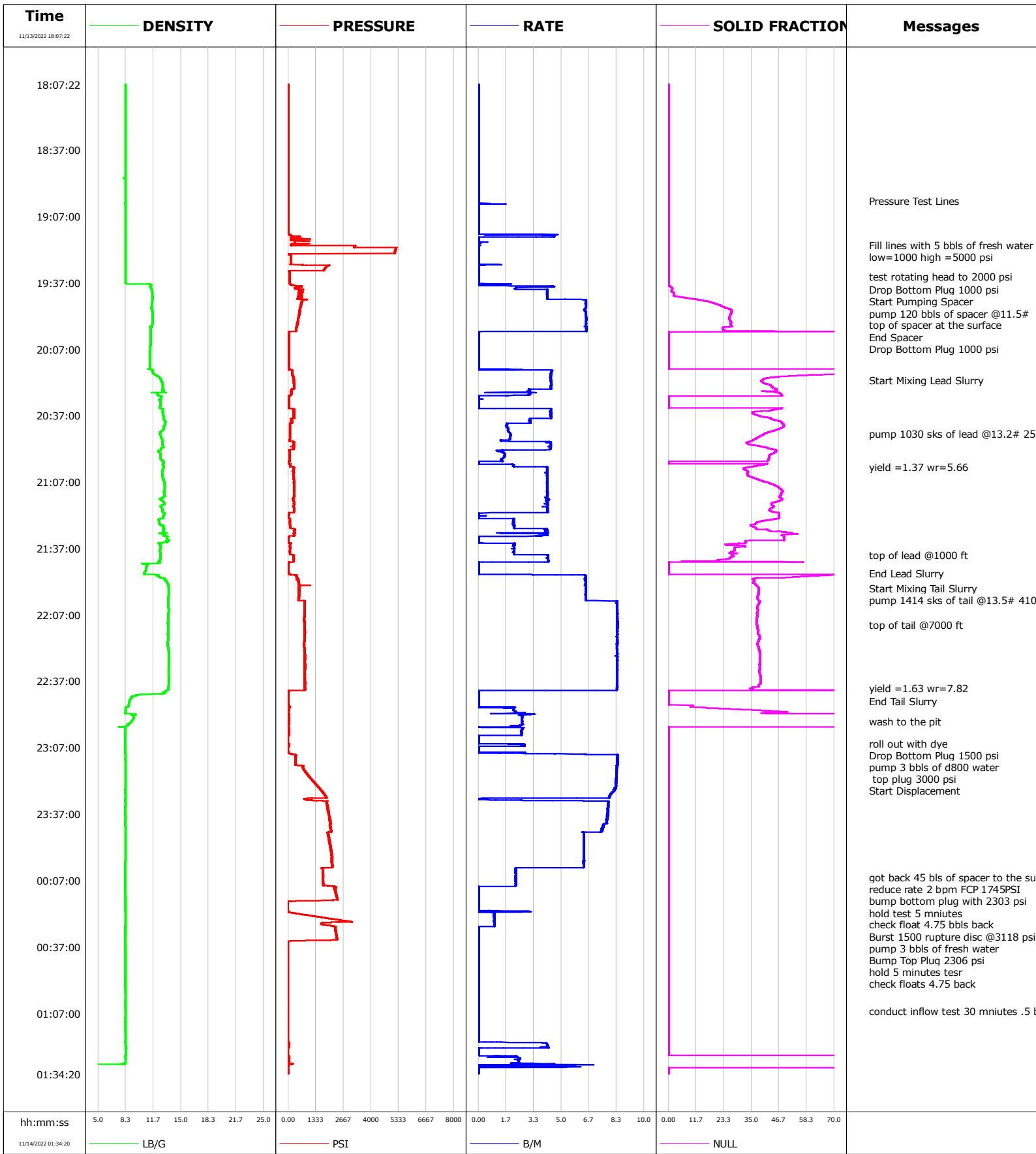


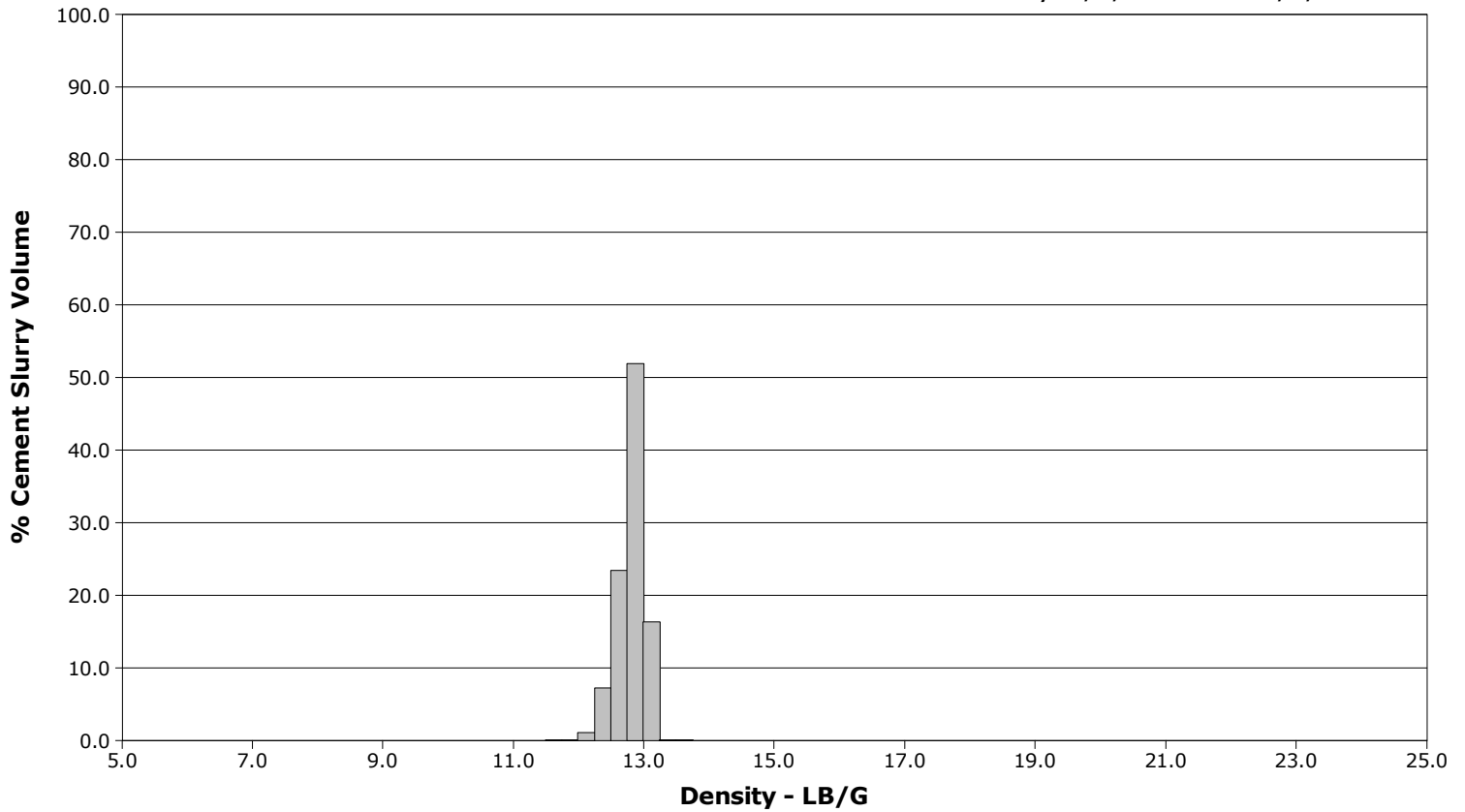
| | | | |
|-----------------|-------------------|-----------------|------------|
| Well | GUTTERSEN C28-745 | Client | CHEVRON |
| Field | DJ | SIR No. | 3268190 |
| Engineer | ALBERT SNYDER | Job Type | PRODUCTION |
| Country | United States | Job Date | 11-13-2022 |



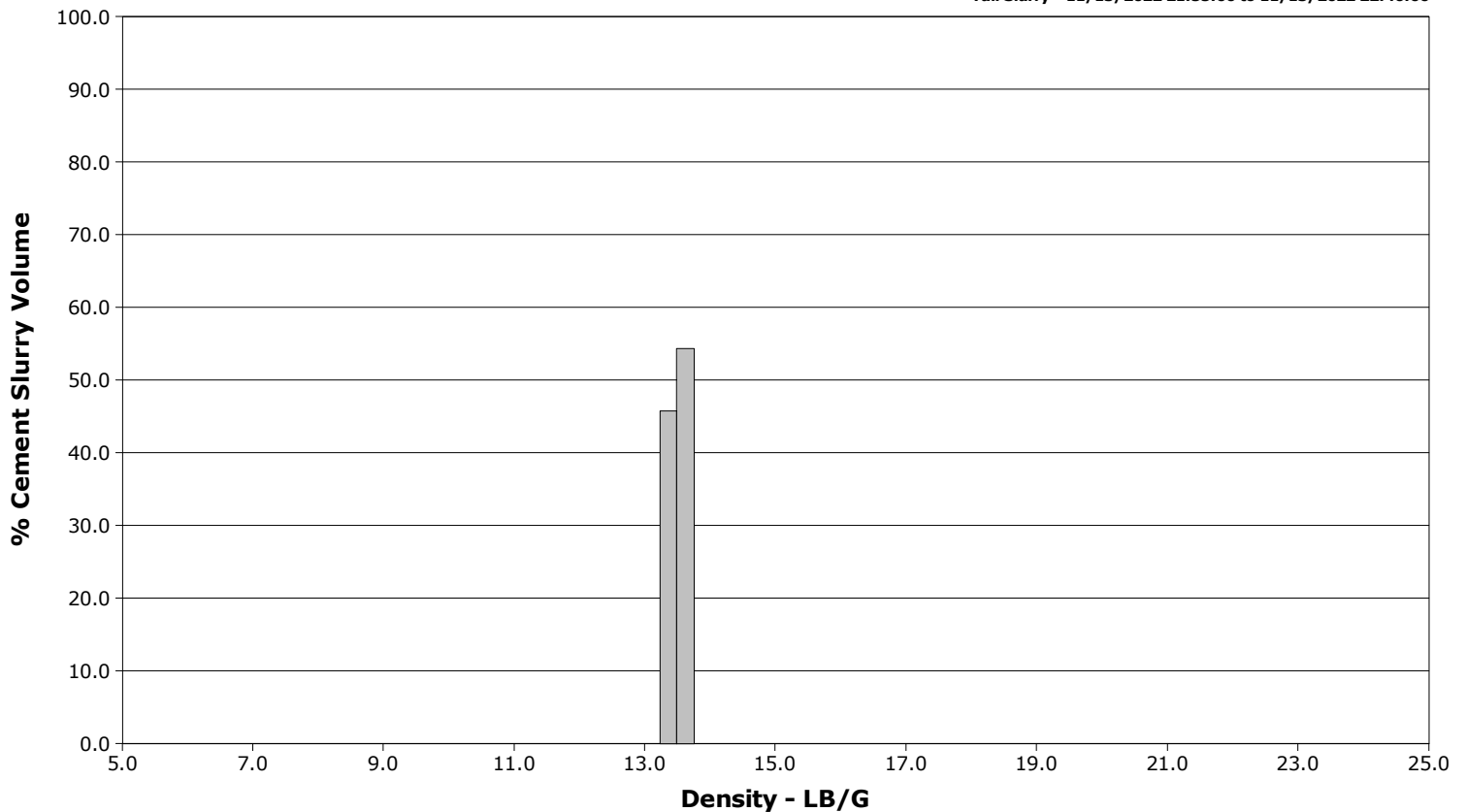
Well GUTTERSEN C28-745
Field DJ
Engineer ALBERT SNYDER
Country United States

Client CHEVRON
SIR No. 3268190
Job Type PRODUCTION
Job Date 11-13-2022

Lead Slurry - 11/13/2022 20:21:00 to 11/13/2022 21:48:00



Tail Slurry - 11/13/2022 21:55:00 to 11/13/2022 22:46:00



| | | | | Customer | | Job Number | |
|--|--|-------------------|-------------------|----------------------------|---------------------------------------|-----------------|----------------------|
| | | | | CHEVRON | | 3268190 | |
| Well | | Location (legal) | | Schlumberger Location | | Job Start | |
| GUTTERSON C28-745 | | SWSE S33 T4N R64W | | WCC | | Nov/13/2022 | |
| Field | Formation Name/Type | | Deviation | Bit Size | Well MD | Well TVD | |
| DJ | | | deg | in | 17131.0 ft | 6788.0 ft | |
| County | | State/Province | | BHP | BHST | BHCT | Pore Press. Gradient |
| WELD | | Colorado | | psi | 229 degF | 246 degF | lb/gal |
| Well Master | | API/UWI | | | | | |
| 065879872 | | 05-123-48931 | | | | | |
| Rig Name | Drilled For | Service Via | Casing/Liner | | | | |
| PATTERSEN 268 | Oil & Gas | Land | | | | | |
| Offshore Zone | Well Class | Well Type | Depth, ft | Size, in | Weight, lb/ft | Grade | Thread |
| N/A | New | Development | 1927.0 | 9.6 | 36.0 | J-55 | 8RD |
| | | | 17119.0 | 5.5 | 17.0 | P-110 | 8RD |
| Drilling Fluid Type | | Max. Density | Plastic Viscosity | | Tubing/Drill Pipe | | |
| LT OBM | | 9.90 lb/gal | cP | | | | |
| Service Line | Job Type | | T/D | Depth, ft | Size, in | Weight, lb/ft | Grade |
| Cementing | PRODUCTION | | | | | | |
| Max. Allowed Tub. Press | Max. Allowed Ann. Press | WH Connection | | Perforations/Open Hole | | | |
| psi | psi | | | | | | |
| Service Instructions | Top, ft | Bottom, ft | shot/ft | No. of Shots | Total Interval | | |
| FILL LINES WITH 5 BBLS OF FRESH WATER, TESTED LINES LOW1000 5000 HIGH TEST ROTATING HEAD TO 2000 PSI, DROP BOTTOM PLUG, PUMP 120 BBLS OF SPACER @11.5#, DROP BOTTOM PLUG, PUMP 1030 SKS OF LEAD @13.2# 251 BBLS HAD ISSUES KEEPING DENSITY KEPT POWDERING OFF, PUMP 1414 SKS OF TAIL @13.5# 410 BBLS, WASH TO PIT, ROLL UNTIL WE SEE DYED WATER, DROP BOTTOM PLUG, PUMP 3 BBLS OF RETARDED WATER, DROP TOP PLUG DIPL;ACE 397 BBLS OF BIOCID WATER, BUMP BTOOM PLUG HOLD TEST 500 PSI OVER CHECK FLOAT, BURST SUB, FINISH PUMPING DISPLACEMENT 3 BBLS BUMP TOP PLUG, 500 OVER HOLD FOR 5 MNIUTESM CHECK FLOAT WAIT 30 MNUTES TO MONITER FLOWE BACK END JOB. .5 bbls got back 45 bbls of spacer to the surface | ft | ft | | | ft | | |
| | ft | ft | | | Diameter | | |
| | ft | ft | | | in | | |
| | | | | | | | |
| Casing/Tubing Secured | 1 Hole Vol. Circulated prior to Cement | Casing Tools | Squeeze Job | | | | |
| <input type="checkbox"/> | <input checked="" type="checkbox"/> | | | | | | |
| Lift Pressure | Shoe Type | Shoe Depth | Stage Tool Type | Stage Tool Depth | Tail Pipe Size | Tail Pipe Depth | |
| 12249 psi | Float | 17118.0 ft | | ft | in | ft | |
| Pipe Rotated | Pipe Reciprocated | Collar Type | Collar Depth | Sqz. Total Vol. | | | |
| <input type="checkbox"/> | <input type="checkbox"/> | Float | 17115.0 ft | bbbl | | | |
| No. Centralizers | Top Plugs | Bottom Plugs | Cement Head Type | Job Scheduled For | Arrived on Location | Leave Location | |
| | | | Single | Nov/13/2022 10:00 | Nov/13/2022 09:30 | Nov/13/2022 | |
| Date | Time 24-hr clock | CPF1_PRESS PSI | CPF1_TTL_RATE B/M | CPF1_DOWNHOLE_DENSITY LB/G | Message | | |
| 11/13/2022 | 18:07:22 | 4 | 0.0 | 8.31 | Remark | | |
| 11/13/2022 | 19:00:00 | 8 | 0.0 | 8.32 | Pressure Test Lines | | |
| 11/13/2022 | 19:20:00 | 140 | 0.0 | 8.31 | Fill lines with 5 bbls of fresh water | | |
| 11/13/2022 | 19:22:00 | 5194 | 0.0 | 8.31 | low=1000 high =5000 psi | | |
| 11/13/2022 | 19:34:00 | 66 | 0.0 | 8.31 | test rotating head to 2000 psi | | |
| 11/13/2022 | 19:40:00 | 712 | 4.0 | 11.47 | Drop Bottom Plug 1000 psi | | |
| 11/13/2022 | 19:42:00 | 565 | 4.2 | 11.56 | Start Pumping Spacer | | |
| 11/13/2022 | 19:45:00 | 680 | 6.5 | 11.55 | pump 120 bbls of spacer @11.5# | | |
| 11/13/2022 | 19:55:00 | 449 | 6.5 | 11.62 | top of spacer at the surface | | |
| 11/13/2022 | 20:00:00 | 35 | 0.0 | 11.38 | End Spacer | | |
| 11/13/2022 | 20:05:00 | 27 | 0.0 | 11.36 | Drop Bottom Plug 1000 psi | | |
| 11/13/2022 | 20:21:00 | 268 | 4.4 | 12.62 | Start Mixing Lead Slurry | | |
| 11/13/2022 | 20:45:00 | 78 | 1.9 | 12.50 | pump 1030 sks of lead @13.2# 251 bbls | | |
| 11/13/2022 | 21:00:00 | 95 | 2.1 | 12.92 | yield =1.37 wr=5.66 | | |
| 11/13/2022 | 21:40:00 | 252 | 4.2 | 12.55 | top of lead @1000 ft | | |
| 11/13/2022 | 21:48:00 | 23 | 0.0 | 10.63 | End Lead Slurry | | |
| 11/13/2022 | 21:55:00 | 548 | 6.5 | 13.53 | Start Mixing Tail Slurry | | |
| 11/13/2022 | 22:00:00 | 528 | 6.5 | 13.48 | pump 1414 sks of tail @13.5# 410 bbls | | |
| 11/13/2022 | 22:11:32 | 789 | 8.4 | 13.46 | top of tail @7000 ft | | |
| 11/13/2022 | 22:40:00 | 827 | 8.4 | 13.50 | yield =1.63 wr=7.82 | | |
| 11/13/2022 | 22:46:00 | 13 | 0.0 | 8.80 | End Tail Slurry | | |

| Well | | Field | | Job Start | | Customer | | Job Number | |
|-------------------|------------------|----------------|-------------------|----------------------------|--|----------|--|------------|--|
| GUTTERSON C28-745 | | DJ | | Nov/13/2022 | | CHEVRON | | 3268190 | |
| Date | Time 24-hr clock | CPF1_PRESS PSI | CPF1_TTL_RATE B/M | CPF1_DOWNHOLE_DENSITY LB/G | Message | | | | |
| 11/13/2022 | 23:05:00 | -3 | 0.0 | 8.28 | roll out with dye | | | | |
| 11/13/2022 | 23:09:00 | 25 | 0.0 | 8.29 | Drop Bottom Plug 1500 psi | | | | |
| 11/13/2022 | 23:10:00 | 224 | 6.5 | 8.29 | pump 3 bbls of d800 water | | | | |
| 11/13/2022 | 23:14:00 | 355 | 8.4 | 8.31 | top plug 3000 psi | | | | |
| 11/13/2022 | 23:15:00 | 549 | 8.4 | 8.31 | Start Displacement | | | | |
| 11/14/2022 | 00:05:33 | 1706 | 2.3 | 8.29 | got back 45 bls of spacer to the surface | | | | |
| 11/14/2022 | 00:08:00 | 1719 | 2.2 | 8.29 | reduce rate 2 bpm FCP 1745PSI | | | | |
| 11/14/2022 | 00:09:00 | 1717 | 2.3 | 8.29 | bump bottom plug with 2303 psi | | | | |
| 11/14/2022 | 00:10:00 | 2214 | 0.0 | 8.29 | hold test 5 mniutes | | | | |
| 11/14/2022 | 00:12:00 | 2294 | 0.0 | 8.29 | check float 4.75 bbls back | | | | |
| 11/14/2022 | 00:19:20 | -27 | 0.0 | 8.29 | Burst 1500 rupture disc @3118 psi | | | | |
| 11/14/2022 | 00:26:00 | 1823 | 1.0 | 8.30 | pump 3 bbls of fresh water | | | | |
| 11/14/2022 | 00:27:00 | 1772 | 1.0 | 8.30 | Bump Top Plug 2306 psi | | | | |
| 11/14/2022 | 00:35:00 | -18 | 0.0 | 8.29 | check floats 4.75 back | | | | |

Post Job Summary

| Average Pump Rates, bbl/min | | | | | Volume of Fluid Injected, bbl | | | |
|---------------------------------------|-------------------------|--------------|----------------|-------------------------------|-------------------------------|---------------|-------------------------------------|--|
| Slurry | N2 | Mud | Maximum Rate | Total Slurry | Mud | Spacer | N2 | |
| 5.3 | | | 8.4 | 741.0 | 0.0 | 120.0 | | |
| Treating Pressure Summary, psi | | | | | Breakdown Fluid | | | |
| Maximum | Final | Average | Bump Plug to | Breakdown | Type | Volume | Density | |
| 5226 | 10 | 593 | 3000 | | FreshWater | 397.0 bbl | 8.34 lb/gal | |
| Avg. N2 Percent | Designed Slurry Volume | Displacement | Mix Water Temp | Cement Circulated to Surface? | <input type="checkbox"/> | Volume | bbl | |
| % | 741.0 bbl | 410.0 bbl | 67 degF | Washed Thru Perfs | <input type="checkbox"/> | To | ft | |
| Customer or Authorized Representative | Schlumberger Supervisor | | | Circulation Lost | <input type="checkbox"/> | Job Completed | <input checked="" type="checkbox"/> | |
| JOHN/RICKY | ALBERT SNYDER | | | - | | - | | |