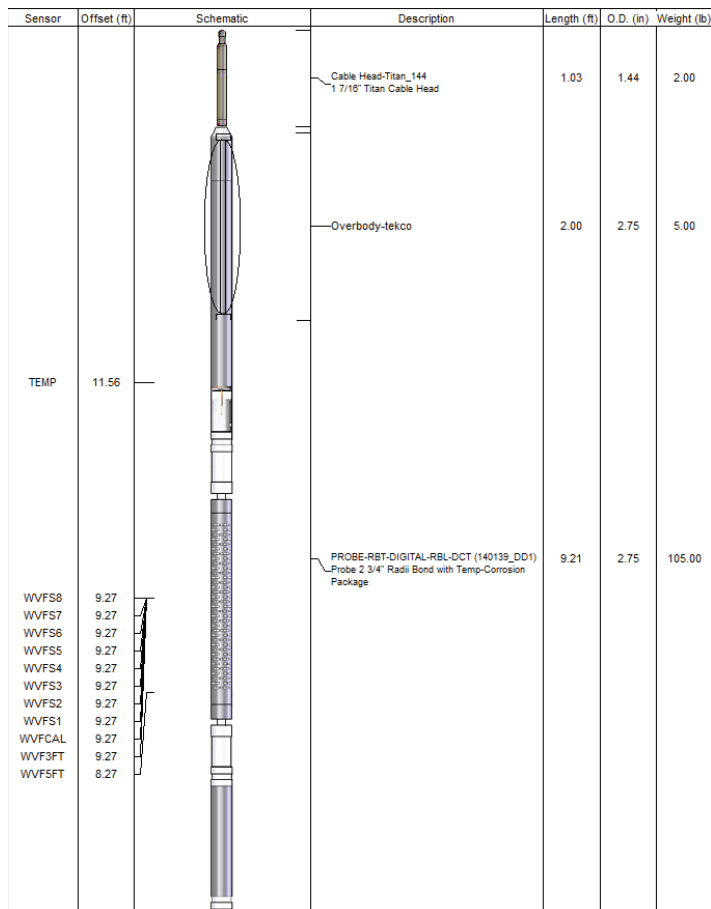
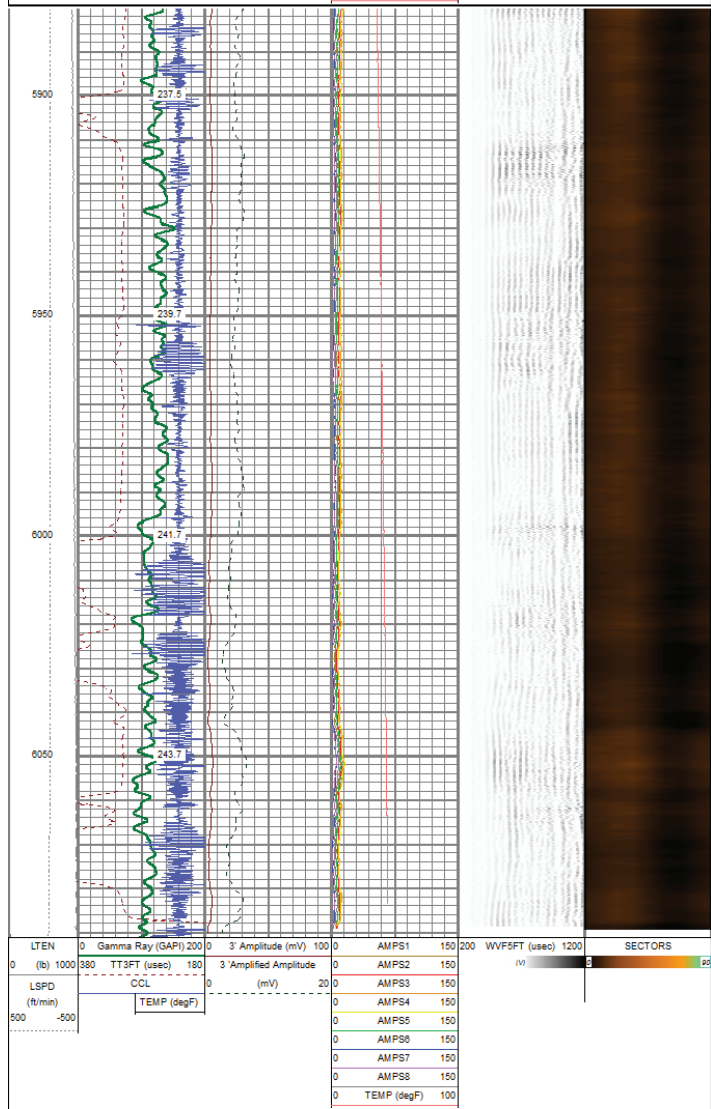
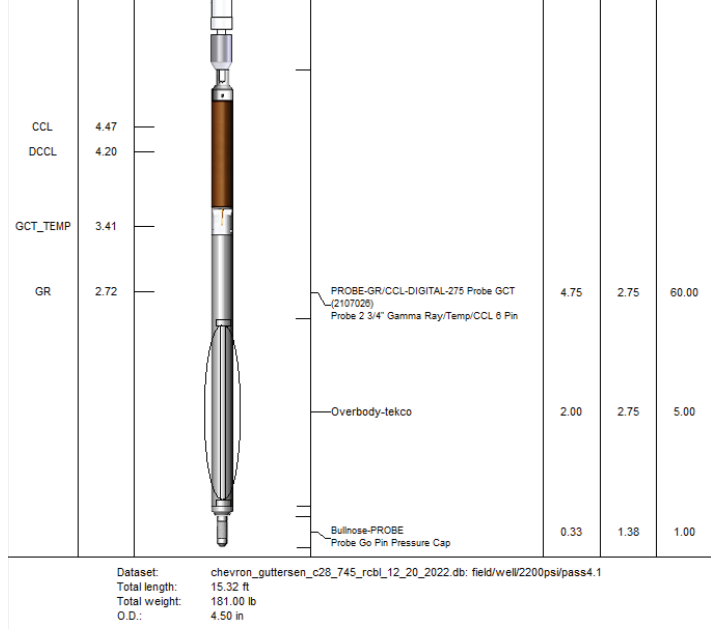


0 AMPS7 150
 0 AMPS8 150
 0 TEMP (degF) 100





Calibration Report

Database File: chevron_guttersen_c28_745_rcbl_12_20_2022.db
 Dataset Pathname: 2200psi/pass4.1
 Dataset Creation: Tue Dec 20 11:59:39 2022

Gamma Ray Calibration Report

Serial Number: 2107020
 Tool Model: 275 Probe GCT
 Performed: Wed Sep 21 08:38:08 2022

Calibrator Value: 200.0 GAPI
 Background Reading: 43.9 cps
 Calibrator Reading: 269.1 cps
 Sensitivity: 0.8881 GAPI/cps

Segmented Cement Bond Log Calibration Report

Serial Number: 140139_DD1
 Tool Model: RBL-DCT
 Calibration Casing Diameter: 5.500 in
 Calibration Depth: 319.317 ft

Master Calibration, performed (Derived):

	Raw (v)		Calibrated (mv)		Results	
	Zero	Cal	Zero	Cal	Gain	Offset
3'	-0.005	0.555	0.500	71.921	127.387	1.183
CAL	0.019	0.861				
5'	-0.003	0.465	0.500	71.921	146.469	0.898
SUM						
S1	-0.023	0.639	0.000	100.000	151.013	3.442
S2	-0.020	0.660	0.000	100.000	147.065	2.988
S3	-0.018	0.642	0.000	100.000	151.969	2.377
S4	-0.018	0.613	0.000	100.000	156.508	2.754
S5	-0.011	0.553	0.000	100.000	177.348	1.977
S6	-0.009	0.546	0.000	100.000	180.345	1.578
S7	-0.002	0.584	0.000	100.000	170.724	0.332
S8	-0.010	0.580	0.000	100.000	169.609	1.695

Air Zero Calibration, performed Mon Dec 19 08:20:13 2022:

	Raw (v)		Calibrated (v)		Results	
	Zero	Zero	Zero	Zero	Offset	Offset
3'	0.000	0.000	0.000	0.000	0.000	0.000
5'	0.000	0.000	0.000	0.000	0.000	0.000
SUM						
S1	0.000	0.000	0.000	0.000	0.000	0.000
S2	0.000	0.000	0.000	0.000	0.000	0.000
S3	0.000	0.000	0.000	0.000	0.000	0.000
S4	0.000	0.000	0.000	0.000	0.000	0.000
S5	0.000	0.000	0.000	0.000	0.000	0.000
S6	0.000	0.000	0.000	0.000	0.000	0.000
S7	0.000	0.000	0.000	0.000	0.000	0.000
S8	0.000	0.000	0.000	0.000	0.000	0.000

Temperature Calibration Report

Serial Number: 140139_DD1
 Tool Model: RBL-DCT
 Performed: (Not Performed)

	Reference	Reading
Low Reference:	0.00 degF	0.00 degF
High Reference:	1.00 degF	1.00 degF
Gain:	1.00	
Offset:	0.00	
Delta Spacing:	1	



Company: chevron
 Well: Guttersen C28-745
 Field: Wattenberg
 County: Weld
 State: Colorado