


LWD MEMORY LOG											
<div><div><div><div>BAKER HUGHES</div><div>a GE company</div></div><div></div></div><div>Gamma Ray</div></div>											
Scale: 1:1200 True Vertical Depth		Company: Bayswater E&P LLC Well: G & D HANKS P-27-28HN Field: Weld County County: Weld State: Colorado Country: United States									
Depth Reference: Driller's Depth		Surface Location: 040° 32' 32.114" N Latitude: 104° 45' 35.471" W Longitude: Directional SEC: 27 T1WN: 7N RGE: 66W Permanent Datum (P.D.): Ground Level Elevation: 4875.00 ft Log Measured From: Rig Floor Above P.D.: 25.00 ft Elev. KB: N/A Elev. DF: 4900.00 ft Elev. GL: 4875.00 ft									
Status: Final Print		Other Services:									
API No: 05-123-46032											
Job ID: 9067267											
Permanent Datum (P.D.): Ground Level											
Log Measured From: Rig Floor											
Dates		Interval		Magnetic Field Reference							
From: 2019-04-18		Drilled (ft)		Logged (ft)		Azi Reference North: True Dip Angle: (deg)					
To: 2019-05-16		Top: 105.00		Top: 1567.00		Total Magnetic Field Strength: (nT) 52304					
Spud: 2019-04-18		Bottom: 18224.00		Bottom: 18211.00		Mag to Reference North Correction: (deg) 8.21					
Borehole Record											
Casing Record											
Hole Size (in)											
From (ft)											
To (ft)											
Size (in)											
Weight (lb/ft)											
From (ft)											
To (ft)											
13.500											
105.00											
1567.00											
9.625											
36.00											
105.00											
1556.00											
8.500											
1567.00											
18224.00											

(C) 2018 Baker Hughes, a GE company, LLC - All rights reserved. Baker Hughes, a GE company, LLC and its affiliates ("BHGE") provides this information on an "as is" basis for general information purposes and believes it to be accurate as of the date of publication. BHGE does not make any representation as to the accuracy or completeness of the information and makes no warranties of any kind, specific, implied or oral, to the fullest extent permissible by law, including those of merchantability and fitness for a particular purpose or use. BHGE hereby disclaims any and all liability for any direct, indirect, consequential or special damages, claims for lost profits, or third party claims arising from the use of the information, whether a claim is asserted in contract, tort, or otherwise. The BHGE logo is a trademark of Baker Hughes, a GE company, LLC. GE and the GE monogram are trademarks of General Electric Company used under trademark license.

Log Run Summary												
Run No	Bit Run No.	Bit Size (in)	Bit Type	Bit Gauge Length (in)	Assembly Type	Logged Interval		Bit Depth Interval		Date / Time		Circ. Hours (h)
						Top (ft)	Bottom (ft)	From (ft)	To (ft)	Start Logging	End Logging	
1	1	13.500	PDC	4.00	Steerable	0.00	0.00	105.00	1567.00	2019-04-18 02:36	2019-04-18 09:05	6.11
2	2	8.500	PDC	3.00	AutoTrak Curve	1567.00	18211.00	1567.00	18224.00	2019-05-12 18:45	2019-05-16 02:25	80.14

Crew									
Name		Arrive Wellsite	Depart Wellsite	Name		Arrive Wellsite	Depart Wellsite	Name	
Emi Iyalla		2019-05-12	2019-05-17						

Mud Properties Record												
Date / Time	Run No.	Depth (ft)	Mud Type	Density (ppg)	Viscosity (cP)	pH	Fluid Loss (cm3)	Oil / Water	Source	Total Chlorides (ppm)	K+ (%)	
2019-04-18 03:30	1	283.00	Water Based Mud	8.5	1	8.3	0.0	0/99	Active Pit	1291	0.00	
2019-05-12 18:00	2	1567.00	Diesel-Oil Based Mud	8.7	6	N/A	22.0	72/17	Active Pit	40000	0.00	
2019-05-13 03:30	2	4784.00	Diesel-Oil Based Mud	8.7	6	N/A	22.0	73/18	Active Pit	40000	0.00	
2019-05-13 15:30	2	7855.00	Diesel-Oil Based Mud	9.7	11	N/A	18.0	67.6/20	Active Pit	37000	0.00	
2019-05-14 03:30	2	10355.00	Diesel-Oil Based Mud	9.7	12	N/A	16.8	67.8/19.6	Active Pit	36500	0.00	
2019-05-14 15:30	2	12300.00	Diesel-Oil Based Mud	9.7	11	N/A	18.8	67.6/19.7	Active Pit	36000	0.00	
2019-05-15 03:30	2	14189.00	Diesel-Oil Based Mud	9.8	13	N/A	18.4	67.3/19.5	Active Pit	36000	0.00	
2019-05-15 15:30	2	16400.00	Diesel-Oil Based Mud	9.8	12	N/A	18.3	68.4/18.2	Active Pit	35000	0.00	
2019-05-16 03:30	2	18224.00	Diesel-Oil Based Mud	9.9	14	N/A	18.3	68.4/17.8	Active Pit	35500	0.00	

Equipment and Service Data							
Run No.	Tool		Serial Number	Measurement		Sensor Offset (ft)	Bit Offset (ft)
1	NaviTrak		13191955	VSS		14.23	50.20
1	NaviTrak		13191955	Directional (mag)		14.23	50.20
2	AutoTrak Curve Steering Unit		14382369	Near Bit Inclination		5.93	6.73
2	AutoTrak Curve Steering Unit		14382369	Near Bit VSS		5.93	6.73
2	AutoTrak Curve MWD		14179564	Gamma (single)		2.77	12.90
2	AutoTrak Curve MWD		14179564	Directional (mag)		12.29	22.42

Service and Tool Mnemonics		
Mnemonic	Name	Description
NTK	NaviTrak	Probe Based Directional Module, NaviTrak Platform
ATSCU	AutoTrak Curve Steering Unit	AutoTrak Curve Steering Unit

ATC SU	AutoTrak Curve SU	Auto Trak Curve Steering Unit
ATC MWD	AutoTrak Curve MWD	Auto Trak Curve MWD
ATC LCPM	AutoTrak Curve LCPM	Auto Trak Curve LCPM

Comments

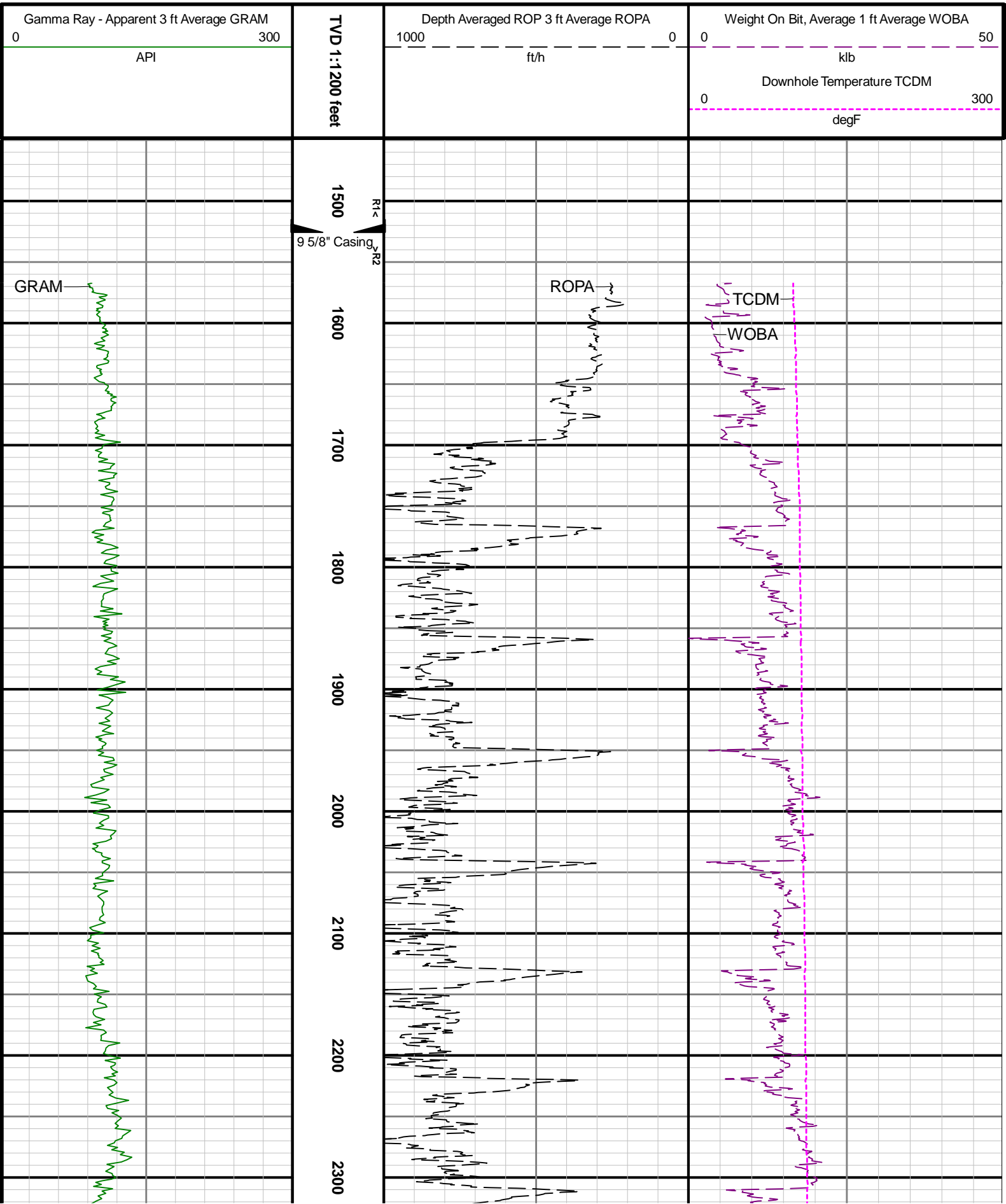
1	Depth measurements were obtained from a depth control system not supplied or operated by Baker Hughes. Due to lack of control by Baker Hughes logging engineers, depth calibrations and measurements could not be independently verified.
2	Baker Hughes LWD Run 1 utilized 6.75 inch NaviTrak Service (Directional) behind a 13.5 inch bit and a steerable assembly from 105 to 1567 feet MD (105 to 1537 feet TVD). No logging data was acquired through out that run.
3	Baker Hughes LWD Run 2 utilized 6.75 inch NaviGamma Service (Gamma Ray and Directional) behind an 8.5 inch bit and a rotary steerable assembly from 1567 to 18224 feet MD (1537 to 7281 feet TVD).
4	The GRAM data is presented on a scale of 0 to 300 API, per the client's request.

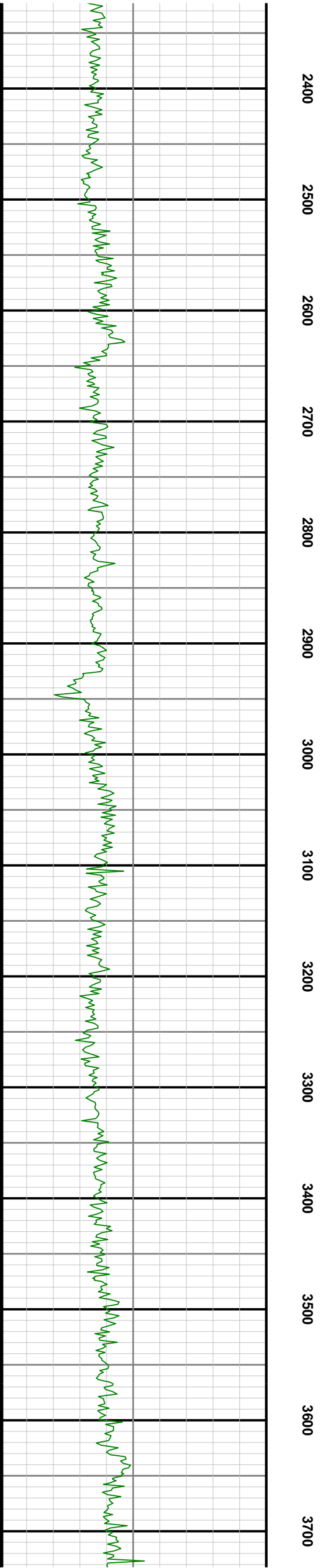
Remarks

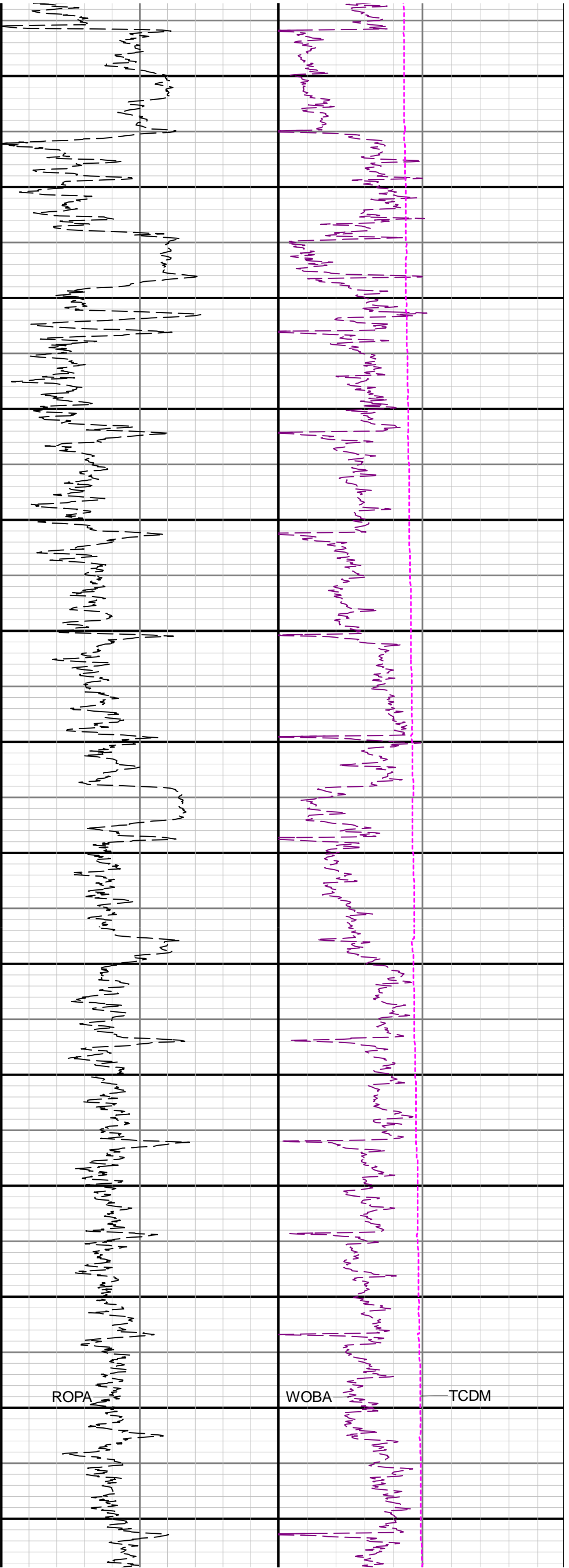
Number	Depth (ft)	Hole Section (in)	Run No.	Remark
--------	---------------	-------------------------	------------	--------

Curve Mnemonics

Presented Curves	Description	Units
ROPA	Depth Averaged ROP 3 ft Average	ft/h
WOBA	Weight On Bit, Average 1 ft Average	klb
GRAM	Gamma Ray - Apparent - Memory 3 ft Average	API
TCDM	Directional Real-Time Survey Temperature	degF

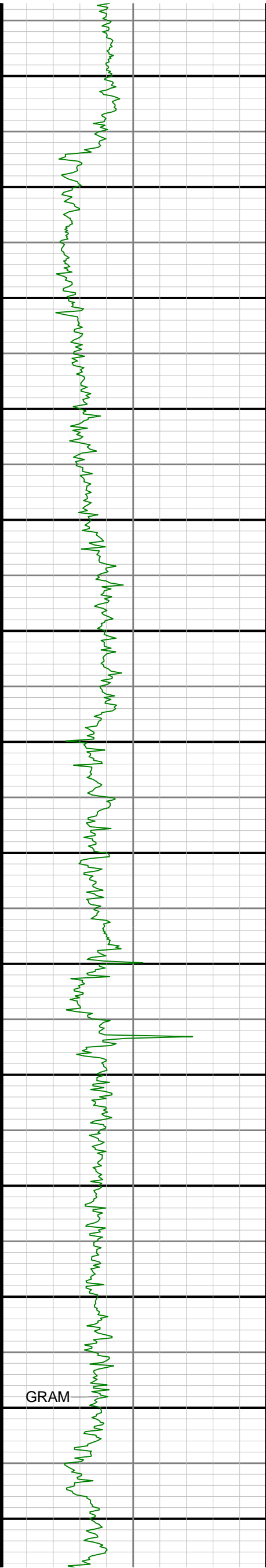


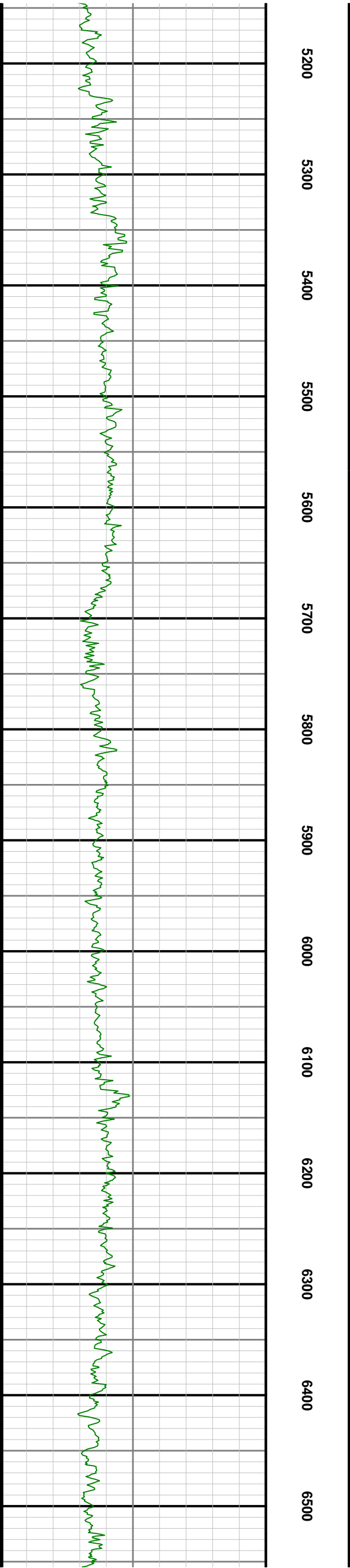
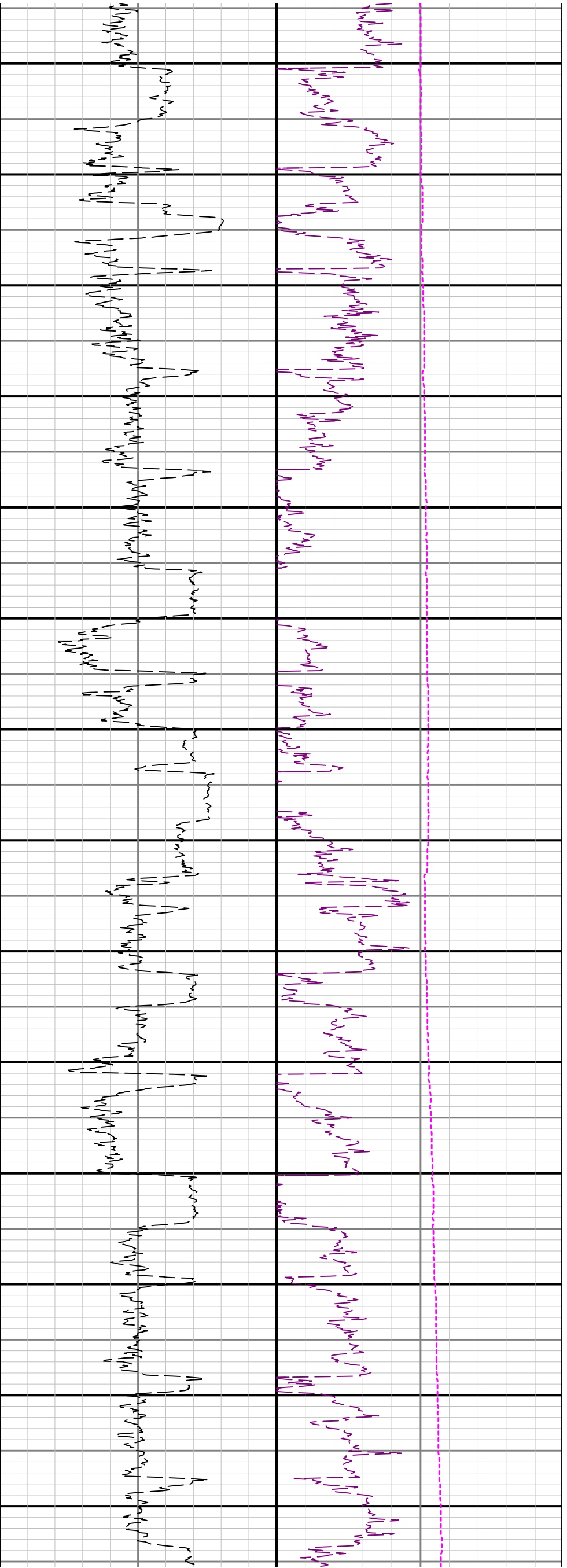


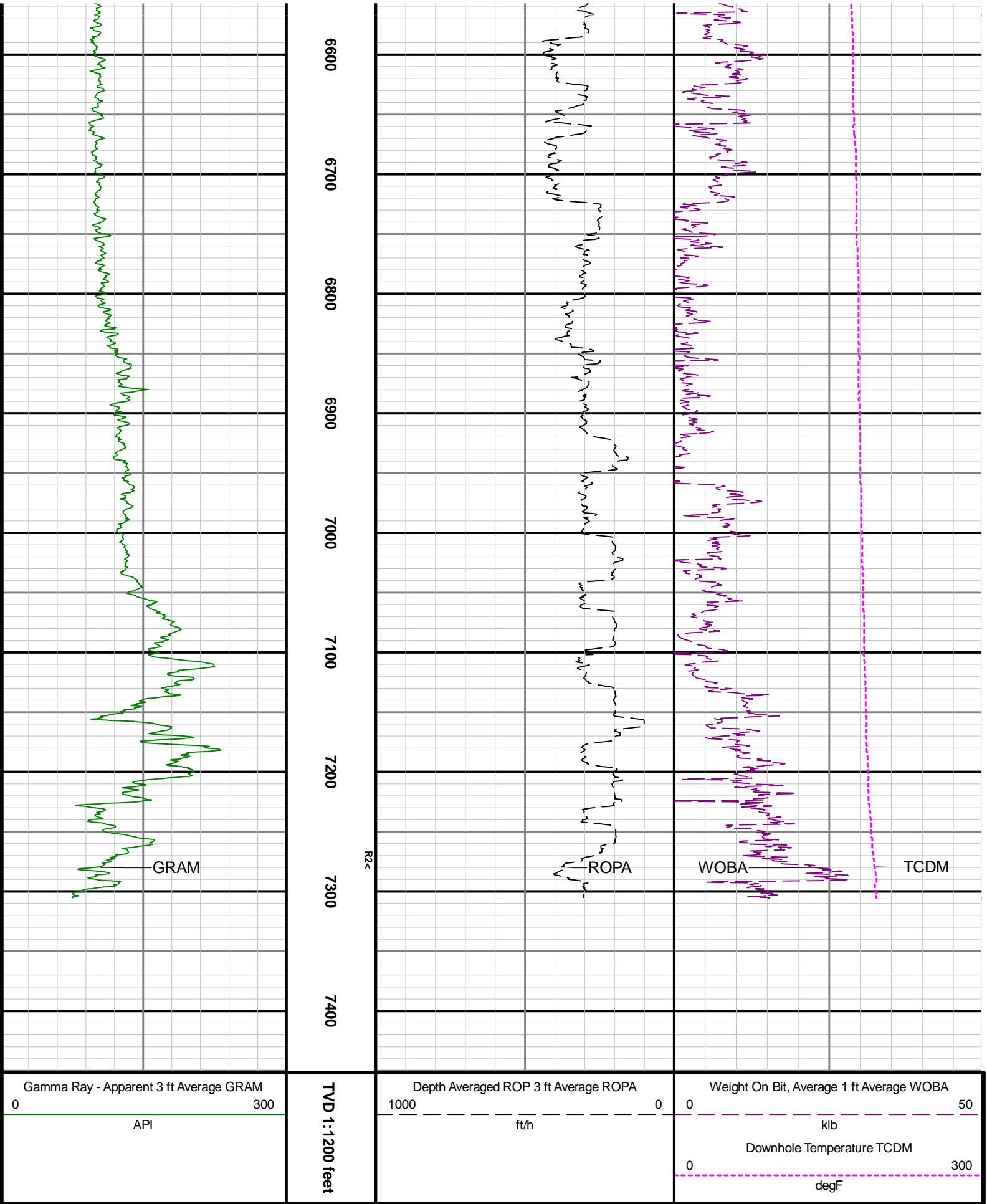


3800 3900 4000 4100 4200 4300 4400 4500 4600 4700 4800 4900 5000 5100

GRAM







Directional Survey Summary													
Latitude:		040° 32' 32.114" N				Longitude:		104° 45' 35.471" W					
North Reference:		True				Drill Depth Zero:		Rig Floor					
Vertical Datum is:		Ground Level				Vertical Datum to DDZ: (ft)		25.00					
Vertical Section North: (ft)		0.00				Vertical Section East: (ft)		0.00					
Vertical Section Azimuth: (deg)		272.80											
Grid Convergence: (deg)		N/A				Magnetic Declination: (deg)		8.21					
Total Correction: (deg)		8.21				TVD Calculation Method:		Minimum Curvature					
Magnetic Correction:		Off				Local Magnetic Field: (nT)		52304					
Local Magnetic Dip Angle: (deg)		66.88				Local Gravity Field: (m/s2)		9.801					
Tie-In / Projection	Measured Depth (ft)	Inclination (deg)	Azimuth (deg)	Temperature (degF)	North (ft)	East (ft)	True Vertical Depth (ft)	TVD Subsea (ft)	Vertical Section (ft)	Course Length (ft)	Dog Leg Severity (deg/100ft)	Build Rate (deg/100ft)	Turn Rate (deg/100ft)
Tie-In	25.00	0.00	0.00	N/A	0.00	0.00	25.00	-4874.00	0.00	0.00	0.00	0.00	0.00
	232.00	0.34	194.26	74.3	-0.60	-0.15	232.00	-4667.00	0.12	207.00	0.16	0.16	-80.07
	326.00	1.16	119.22	74.3	-1.33	0.61	325.99	-4573.01	-0.67	94.00	1.19	0.87	-79.83
	419.00	2.56	85.92	77.0	-1.64	3.50	418.94	-4480.06	-3.58	93.00	1.84	1.51	-35.81
	514.00	4.34	76.14	77.0	-0.63	9.11	513.77	-4385.23	-9.13	95.00	1.97	1.87	-10.29
	608.00	6.22	73.29	77.0	1.69	17.44	607.36	-4291.64	-17.34	94.00	2.02	2.00	-3.03
	703.00	8.17	71.66	77.0	5.29	28.78	701.61	-4197.39	-28.49	95.00	2.06	2.05	-1.72
	797.00	10.47	70.32	82.4	10.27	43.16	794.36	-4104.64	-42.61	94.00	2.46	2.45	-1.43
	892.00	12.51	69.93	82.4	16.71	60.96	887.46	-4011.54	-60.07	95.00	2.15	2.15	-0.41
	987.00	14.47	71.23	82.4	24.06	81.86	979.83	-3919.17	-80.59	95.00	2.09	2.06	1.37
	1082.00	16.09	71.10	82.4	32.14	105.55	1071.47	-3827.53	-103.86	95.00	1.71	1.71	-0.14
	1177.00	17.18	68.47	85.1	41.56	131.06	1162.49	-3736.51	-128.88	95.00	1.39	1.15	-2.77

		1271.00	16.79	65.86	85.1	52.20	156.37	1252.39	-3646.61	-153.63	94.00	0.91	-0.41	-2.78
		1366.00	15.73	63.16	85.1	63.63	180.38	1343.59	-3555.41	-177.05	95.00	1.37	-1.12	-2.84
		1460.00	15.94	65.81	87.8	74.67	203.52	1434.03	-3464.97	-199.63	94.00	0.80	0.22	2.82
		1515.00	15.45	67.22	85.1	80.60	217.17	1486.98	-3412.02	-212.97	55.00	1.13	-0.89	2.56
		1593.00	15.91	69.01	98.7	88.46	236.73	1562.08	-3336.92	-232.12	78.00	0.86	0.59	2.29
		1686.00	16.58	70.67	101.4	97.41	261.15	1651.36	-3247.64	-256.08	93.00	0.88	0.72	1.78
		1781.00	16.79	69.37	104.1	106.73	286.78	1742.36	-3156.64	-281.22	95.00	0.45	0.22	-1.37
		1876.00	16.71	69.41	106.8	116.37	312.41	1833.33	-3065.67	-306.35	95.00	0.09	-0.08	0.04
		1971.00	16.74	70.33	106.8	125.78	338.08	1924.31	-2974.69	-331.53	95.00	0.28	0.03	0.97
		2064.00	16.75	69.25	106.8	135.04	363.22	2013.37	-2885.63	-356.19	93.00	0.33	0.01	-1.16
		2158.00	16.75	70.19	109.5	144.43	388.63	2103.38	-2795.62	-381.11	94.00	0.29	0.00	1.00
		2252.00	16.70	71.18	109.5	153.37	414.16	2193.41	-2705.59	-406.17	94.00	0.31	-0.05	1.05
		2346.00	16.78	75.49	112.2	161.13	440.08	2283.43	-2615.57	-431.68	94.00	1.32	0.09	4.59
		2440.00	16.72	74.43	112.2	168.16	466.24	2373.44	-2525.56	-457.47	94.00	0.33	-0.06	-1.13
		2535.00	16.78	76.23	114.9	175.09	492.72	2464.41	-2434.59	-483.58	95.00	0.55	0.06	1.89
		2629.00	16.65	77.73	114.9	181.18	519.06	2554.44	-2344.56	-509.59	94.00	0.48	-0.14	1.60
		2723.00	16.97	79.97	114.9	186.43	545.73	2644.42	-2254.58	-535.97	94.00	0.77	0.34	2.38
		2817.00	16.71	78.89	117.6	191.43	572.50	2734.39	-2164.61	-562.46	94.00	0.43	-0.28	-1.15
		2912.00	16.80	79.65	117.6	196.53	599.40	2825.36	-2073.64	-589.09	95.00	0.25	0.09	0.80
		3007.00	16.94	76.88	120.3	202.13	626.39	2916.27	-1982.73	-615.77	95.00	0.86	0.15	-2.92
		3101.00	16.60	73.27	120.3	209.11	652.59	3006.27	-1892.73	-641.59	94.00	1.17	-0.36	-3.84
		3196.00	16.83	70.69	120.3	217.56	678.56	3097.26	-1801.74	-667.12	95.00	0.82	0.24	-2.72
		3291.00	16.68	70.46	123.0	226.67	704.39	3188.23	-1710.77	-692.48	95.00	0.17	-0.16	-0.24
		3386.00	16.66	66.18	123.0	236.73	729.70	3279.24	-1619.76	-717.26	95.00	1.29	-0.02	-4.51
		3480.00	16.59	63.95	125.7	248.07	754.08	3369.31	-1529.69	-741.06	94.00	0.68	-0.07	-2.37
		3575.00	16.60	67.69	125.7	259.17	778.82	3460.36	-1438.64	-765.23	95.00	1.12	0.01	3.94
		3669.00	16.72	68.04	128.4	269.33	803.78	3550.41	-1348.59	-789.67	94.00	0.17	0.13	0.37
		3763.00	15.07	73.54	128.4	277.85	828.04	3640.82	-1258.18	-813.48	94.00	2.37	-1.76	5.85
		3858.00	16.58	82.20	131.1	283.19	853.32	3732.23	-1166.77	-838.47	95.00	2.95	1.59	9.12
		3952.00	16.94	78.68	131.1	287.70	880.04	3822.24	-1076.76	-864.93	94.00	1.15	0.38	-3.74
		4047.00	16.85	70.91	131.1	294.92	906.62	3913.15	-985.85	-891.14	95.00	2.38	-0.09	-8.18
		4141.00	16.77	63.95	133.8	305.33	931.68	4003.14	-895.86	-915.66	94.00	2.14	-0.09	-7.40
		4236.00	16.85	61.77	133.8	317.86	956.13	4094.08	-804.92	-939.46	95.00	0.67	0.08	-2.29
		4330.00	16.70	60.26	136.5	331.00	979.86	4184.08	-714.92	-962.52	94.00	0.49	-0.16	-1.61
		4425.00	16.74	64.67	136.5	343.63	1004.08	4275.07	-623.93	-986.09	95.00	1.34	0.04	4.64
		4520.00	16.69	70.89	139.2	353.95	1029.34	4366.06	-532.94	-1010.82	95.00	1.88	-0.05	6.55
		4614.00	16.97	74.87	139.2	361.95	1055.33	4456.04	-442.96	-1036.39	94.00	1.26	0.30	4.23
		4802.00	16.85	75.75	139.2	375.82	1108.23	4635.91	-263.09	-1088.55	188.00	0.15	-0.06	0.47
		4897.00	16.89	74.93	141.9	382.79	1134.90	4726.82	-172.18	-1114.84	95.00	0.25	0.04	-0.86
		4992.00	16.93	74.38	144.6	390.11	1161.55	4817.72	-81.28	-1141.10	95.00	0.17	0.04	-0.58
		5087.00	16.88	73.47	144.6	397.76	1188.09	4908.61	9.61	-1167.24	95.00	0.28	-0.05	-0.96
		5181.00	16.87	72.78	147.3	405.68	1214.20	4998.56	99.56	-1192.93	94.00	0.21	-0.01	-0.73
		5276.00	17.17	71.15	147.3	414.29	1240.64	5089.40	190.40	-1218.92	95.00	0.59	0.32	-1.72
		5371.00	16.75	66.45	150.0	424.29	1266.46	5180.28	281.28	-1244.22	95.00	1.51	-0.44	-4.95
		5465.00	16.97	67.16	150.0	435.02	1291.52	5270.24	371.24	-1268.73	94.00	0.32	0.23	0.76
		5560.00	16.37	72.93	150.0	444.34	1317.10	5361.25	462.25	-1293.82	95.00	1.85	-0.63	6.07
		5654.00	16.54	74.89	152.7	451.71	1342.68	5451.40	552.40	-1319.01	94.00	0.62	0.18	2.09
		5748.00	16.52	75.93	152.7	458.45	1368.56	5541.52	642.52	-1344.53	94.00	0.32	-0.02	1.11
		5843.00	16.65	79.67	155.4	464.17	1395.05	5632.57	733.57	-1370.71	95.00	1.13	0.14	3.94
		5938.00	16.41	81.96	155.4	468.49	1421.73	5723.64	824.64	-1397.14	95.00	0.73	-0.25	2.41
		6033.00	16.76	83.51	158.1	471.92	1448.62	5814.69	915.69	-1423.84	95.00	0.59	0.37	1.63
		6127.00	16.56	74.20	155.4	477.10	1474.98	5904.76	1005.76	-1449.92	94.00	2.84	-0.21	-9.90
		6222.00	16.32	67.34	155.4	485.93	1500.33	5995.88	1096.88	-1474.80	95.00	2.06	-0.25	-7.22
		6317.00	16.66	64.37	158.1	496.96	1524.93	6086.98	1187.98	-1498.83	95.00	0.96	0.36	-3.13
		6412.00	15.65	67.62	160.8	507.73	1549.05	6178.23	1279.23	-1522.40	95.00	1.43	-1.06	3.42
		6506.00	17.02	67.63	163.5	517.79	1573.50	6268.43	1369.43	-1546.33	94.00	1.46	1.46	0.01
		6601.00	16.66	66.81	166.2	528.45	1598.87	6359.36	1460.36	-1571.15	95.00	0.45	-0.38	-0.86
		6790.00	16.89	63.09	171.6	551.54	1648.26	6540.32	1641.32	-1619.35	189.00	0.58	0.12	-1.97
		6885.00	8.83	58.30	174.3	561.64	1666.80	6632.86	1733.86	-1637.38	95.00	8.55	-8.48	-5.04
		6980.00	0.21	349.47	177.0	565.65	1672.99	6727.48	1828.48	-1643.36	95.00	9.22	-9.07	-72.45
		7074.00	9.15	283.67	179.7	567.59	1665.68	6821.08	1922.08	-1635.96	94.00	9.64	9.51	-70.00
		7169.00	18.38	286.76	179.7	573.70	1643.95	6913.25	2014.25	-1613.96	95.00	9.74	9.72	3.25
		7264.00	27.61	278.89	182.5	581.44	1607.77	7000.63	2101.63	-1577.45	95.00	10.22	9.72	-8.28
		7359.00	36.85	273.83	182.5	586.76	1557.48	7080.92	2181.92	-1526.96	95.00	10.13	9.73	-5.33
		7452.00	46.04	271.63	185.2	589.58	1496.06	7150.56	2251.56	-1465.48	93.00	10.00	9.88	-2.37
		7547.00	56.00	267.67	187.9	588.95	1422.34	7210.26	2311.26	-1391.87	95.00	10.97	10.48	-4.17
		7642.00	66.28	266.80	190.6	584.91	1339.35	7256.05	2357.05	-1309.17	95.00	10.85	10.82	-0.92
		7736.00	76.36	266.84	196.0	579.98	1250.55	7286.12	2387.12	-1220.72	94.00	10.72	10.72	0.04
		7830.00	84.67	267.84	196.0	575.69	1158.02	7301.60	2402.60	-1128.51	94.00	8.90	8.84	1.06
		7924.00	90.40	268.63	196.0	572.80	1064.19	7305.64	2406.64	-1034.94	94.00	6.15	6.10	0.84
		8019.00	90.40	268.27	198.7	570.23	969.22	7304.97	2405.97	-940.21	95.00	0.38	-0.00	-0.38
		8113.00	90.83	266.59	198.7	566.02	875.33	7303.97	2404.97	-846.63	94.00	1.84	0.46	-1.79
		8208.00	90.83	266.49	201.4	560.28	780.51	7302.59	2403.59	-752.21	95.00	0.11	0.00	-0.11
		8302.00	90.71	266.07	204.1	554.19	686.72	7301.33	2402.33	-658.83	94.00	0.46	-0.13	-0.45
		8397.00	90.86	265.54	204.1	547.24	591.98	7300.02	2401.02	-564.54	95.00	0.58	0.16	-0.56
		8491.00	90.65	261.08	204.1	536.29	498.65	7298.79	2399.79	-471.86	94.00	4.75	-0.22	-4.74
		8586.00	90.99	264.51	204.1	524.38	404.43	7297.43	2398.43	-378.33	95.00	3.63	0.36	3.61
		8681.00	90.98	267.42	204.1	517.69	309.69	7295.79	2396.79	-284.03	95.00	3.06	-0.01	3.06
		8775.00	91.08	268.09	206.8	514.01	215.77	7294.10	2395.10	-190.41	94.00	0.72	0.11	0.71
		8870.00	91.23	267.86	209.5	510.66	120.85	7292.19	2393.19	-95.76	95.00	0.29	0.16	-0.24
		8964.00	91.29	268.73	209.5	507.86	26.92	7290.12	2391.12	-2.08	94.00	0.93	0.06	0.93
		9058.00	90.95	269.51	212.2	506.42	-67.05	7288.28	2389.28	91.71	94.00	0.91	-0.36	0.83
		9153.00	91.35	270.51	214.9	506.43	-162.03	7286.38	2387.38	186.58	95.00	1.13	0.42	1.05

	10285.00	90.28	266.10	225.7	558.43	-1291.61	7273.72	2374.72	1317.35	94.00	1.88	0.06	-1.88
	10380.00	90.31	263.65	225.7	549.94	-1386.23	7273.23	2374.23	1411.44	95.00	2.58	0.03	-2.58
	10474.00	90.25	261.78	225.7	538.02	-1479.46	7272.77	2373.77	1503.98	94.00	1.99	-0.06	-1.99
	10569.00	90.25	263.28	225.7	525.67	-1573.65	7272.36	2373.36	1597.45	95.00	1.58	-0.00	1.58
	10663.00	90.28	264.16	225.7	515.39	-1667.09	7271.92	2372.92	1690.27	94.00	0.94	0.03	0.94
	10758.00	90.12	265.96	225.7	507.21	-1761.73	7271.59	2372.59	1784.40	95.00	1.90	-0.17	1.89
	10853.00	90.12	266.36	228.4	500.85	-1856.51	7271.39	2372.39	1878.76	95.00	0.42	0.00	0.42
	10947.00	90.06	266.50	228.4	494.99	-1950.33	7271.25	2372.25	1972.18	94.00	0.16	-0.06	0.15
	11042.00	90.28	269.23	228.4	491.46	-2045.26	7270.96	2371.96	2066.82	95.00	2.88	0.23	2.87
	11137.00	90.37	273.79	228.4	493.96	-2140.20	7270.43	2371.43	2161.77	95.00	4.80	0.09	4.80
	11231.00	90.18	271.53	231.1	498.32	-2234.09	7269.97	2370.97	2255.76	94.00	2.41	-0.20	-2.40
	11326.00	90.15	272.26	231.1	501.46	-2329.04	7269.70	2370.70	2350.75	95.00	0.77	-0.03	0.77
	11515.00	90.40	272.51	233.8	509.33	-2517.87	7268.79	2369.79	2539.74	189.00	0.19	0.13	0.13
	11609.00	90.12	272.25	233.8	513.23	-2611.79	7268.37	2369.37	2633.74	94.00	0.41	-0.30	-0.28
	11704.00	90.46	271.51	233.8	516.35	-2706.73	7267.89	2368.89	2728.73	95.00	0.86	0.36	-0.78
	11798.00	90.52	271.99	236.5	519.22	-2800.69	7267.08	2368.08	2822.71	94.00	0.51	0.06	0.51
	11893.00	90.49	271.03	236.5	521.72	-2895.65	7266.24	2367.24	2917.68	95.00	1.01	-0.03	-1.01
	11988.00	90.25	272.00	239.2	524.23	-2990.61	7265.63	2366.63	3012.65	95.00	1.05	-0.25	1.02
	12082.00	90.25	270.35	239.2	526.16	-3084.59	7265.22	2366.22	3106.61	94.00	1.76	0.00	-1.76
	12176.00	90.12	268.15	239.2	524.93	-3178.57	7264.92	2365.92	3200.42	94.00	2.34	-0.14	-2.34
	12271.00	90.25	265.84	239.2	519.95	-3273.44	7264.61	2365.61	3294.93	95.00	2.44	0.14	-2.43
	12365.00	90.12	268.77	233.8	515.53	-3367.32	7264.31	2365.31	3388.49	94.00	3.12	-0.14	3.12
	12460.00	90.12	269.79	236.5	514.34	-3462.31	7264.11	2365.11	3483.30	95.00	1.07	-0.00	1.07
	12555.00	90.09	267.40	239.2	512.01	-3557.28	7263.93	2364.93	3578.04	95.00	2.52	-0.03	-2.52
	12650.00	89.88	267.14	241.9	507.48	-3652.17	7263.96	2364.96	3672.60	95.00	0.35	-0.22	-0.27
	12744.00	90.31	268.99	241.9	504.31	-3746.11	7263.80	2364.80	3766.27	94.00	2.02	0.46	1.97
	12838.00	90.06	269.77	244.6	503.29	-3840.10	7263.50	2364.50	3860.11	94.00	0.87	-0.27	0.83
	12933.00	90.15	271.53	244.6	504.37	-3935.09	7263.33	2364.33	3955.03	95.00	1.86	0.09	1.85
	13028.00	90.00	271.58	239.2	506.95	-4030.06	7263.20	2364.20	4050.01	95.00	0.17	-0.16	0.05
	13123.00	90.34	271.01	239.2	509.09	-4125.03	7262.92	2363.92	4144.98	95.00	0.70	0.36	-0.60
	13218.00	90.25	269.49	244.6	509.51	-4220.03	7262.43	2363.43	4239.88	95.00	1.60	-0.09	-1.60
	13312.00	89.94	269.36	244.6	508.57	-4314.02	7262.27	2363.27	4333.72	94.00	0.36	-0.33	-0.14
	13407.00	90.34	268.76	244.6	507.01	-4409.01	7262.04	2363.04	4428.51	95.00	0.76	0.42	-0.63
	13502.00	90.03	269.09	244.6	505.22	-4503.99	7261.74	2362.74	4523.30	95.00	0.48	-0.33	0.35
	13596.00	90.49	267.91	247.3	502.76	-4597.96	7261.31	2362.31	4617.03	94.00	1.35	0.49	-1.26
	13691.00	89.75	268.02	250.0	499.39	-4692.90	7261.11	2362.11	4711.69	95.00	0.79	-0.78	0.12
	13786.00	90.62	267.57	250.0	495.74	-4787.83	7260.80	2361.80	4806.33	95.00	1.03	0.92	-0.47
	13880.00	89.85	269.77	244.6	493.55	-4881.79	7260.42	2361.42	4900.07	94.00	2.48	-0.82	2.34
	13974.00	89.82	270.19	247.3	493.52	-4975.79	7260.69	2361.69	4993.96	94.00	0.45	-0.03	0.45
	14068.00	89.69	271.66	247.3	495.04	-5069.78	7261.09	2362.09	5087.91	94.00	1.57	-0.14	1.56
	14162.00	89.05	272.11	250.0	498.13	-5163.72	7262.12	2363.12	5181.89	94.00	0.83	-0.68	0.48
	14257.00	89.45	272.51	250.0	501.96	-5258.63	7263.37	2364.37	5276.88	95.00	0.60	0.42	0.42
	14351.00	89.14	272.58	250.0	506.13	-5352.53	7264.52	2365.52	5370.87	94.00	0.34	-0.33	0.07
	14446.00	89.20	272.96	250.0	510.72	-5447.41	7265.90	2366.90	5465.86	95.00	0.40	0.06	0.40
	14541.00	89.35	272.52	250.0	515.26	-5542.30	7267.10	2368.10	5560.85	95.00	0.49	0.16	-0.46
	14636.00	88.98	269.49	250.0	516.93	-5637.26	7268.49	2369.49	5655.78	95.00	3.21	-0.39	-3.19
	14730.00	89.32	269.55	250.0	516.14	-5731.25	7269.88	2370.88	5749.62	94.00	0.37	0.36	0.06
	14825.00	89.42	268.88	250.0	514.84	-5826.23	7270.93	2371.93	5844.42	95.00	0.71	0.11	-0.71
	14920.00	89.51	268.15	252.7	512.38	-5921.19	7271.81	2372.81	5939.15	95.00	0.77	0.09	-0.77
	15014.00	90.62	267.63	252.7	508.92	-6015.13	7271.71	2372.71	6032.81	94.00	1.30	1.18	-0.55
	15108.00	89.35	269.22	252.7	506.34	-6109.09	7271.73	2372.73	6126.53	94.00	2.16	-1.35	1.69
	15203.00	89.57	268.67	252.7	504.59	-6204.07	7272.63	2373.63	6221.31	95.00	0.62	0.23	-0.58
	15297.00	89.48	267.26	255.4	501.25	-6298.00	7273.41	2374.41	6314.97	94.00	1.50	-0.10	-1.50
	15392.00	89.35	266.16	252.7	495.80	-6392.84	7274.38	2375.38	6409.43	95.00	1.17	-0.14	-1.16
	15487.00	89.38	264.42	255.4	488.00	-6487.51	7275.43	2376.43	6503.60	95.00	1.83	0.03	-1.83
	15581.00	89.42	264.49	255.4	478.91	-6581.06	7276.41	2377.41	6596.60	94.00	0.09	0.04	0.07
	15676.00	89.82	265.86	255.4	470.92	-6675.72	7277.04	2378.04	6690.76	95.00	1.50	0.42	1.44
	15770.00	89.29	265.56	258.1	463.89	-6769.46	7277.77	2378.77	6784.04	94.00	0.65	-0.56	-0.32
	15865.00	90.18	265.53	255.4	456.51	-6864.17	7278.21	2379.21	6878.27	95.00	0.94	0.94	-0.03
	15960.00	89.82	265.96	255.4	449.47	-6958.91	7278.21	2379.21	6972.55	95.00	0.59	-0.38	0.45
	16055.00	90.12	267.93	255.4	444.40	-7053.77	7278.26	2379.26	7067.05	95.00	2.10	0.32	2.07
	16150.00	89.91	272.19	258.1	444.50	-7148.74	7278.24	2379.24	7161.92	95.00	4.49	-0.22	4.48
	16244.00	89.91	272.34	258.1	448.22	-7242.67	7278.38	2379.38	7255.92	94.00	0.16	0.00	0.16
	16339.00	89.78	271.23	260.8	451.18	-7337.62	7278.64	2379.64	7350.90	95.00	1.18	-0.14	-1.17
	16434.00	89.72	271.07	260.8	453.08	-7432.60	7279.06	2380.06	7445.86	95.00	0.18	-0.06	-0.17
	16528.00	90.34	271.65	260.8	455.31	-7526.57	7279.01	2380.01	7539.83	94.00	0.90	0.66	0.62
	16623.00	89.88	276.33	258.1	461.92	-7621.32	7278.82	2379.82	7634.78	95.00	4.95	-0.48	4.93
	16718.00	90.12	275.31	260.8	471.56	-7715.83	7278.82	2379.82	7729.65	95.00	1.10	0.25	-1.07
	16813.00	89.85	273.22	260.8	478.62	-7810.56	7278.85	2379.85	7824.61	95.00	2.22	-0.28	-2.20
	16906.00	90.00	272.62	260.8	483.36	-7903.44	7278.97	2379.97	7917.61	93.00	0.67	0.16	-0.65
	17001.00	89.72	271.40	260.8	486.69	-7998.38	7279.20	2380.20	8012.60	95.00	1.32	-0.29	-1.28
	17095.00	90.09	269.80	263.5	487.67	-8092.37	7279.36	2380.36	8106.53	94.00	1.75	0.39	-1.70
	17189.00	90.00	267.64	263.5	485.57	-8186.34	7279.29	2380.29	8200.29	94.00	2.30	-0.10	-2.30
	17283.00	89.85	267.83	266.2	481.86	-8280.26	7279.41	2380.41	8293.92	94.00	0.26	-0.16	0.20
	17377.00	89.85	267.84	266.2	478.31	-8374.20	7279.65	2380.65	8387.57	94.00	0.01	0.00	0.01
	17472.00	89.94	269.09	266.2	475.76	-8469.16	7279.83	2380.83	8482.29	95.00	1.32	0.09	1.32
	17566.00	89.94	268.89	266.2	474.11	-8563.15	7279.93	2380.93	8576.08	94.00	0.21	-0.00	-0.21
	17660.00	89.94	268.94	266.2	472.33	-8657.13	7280.03	2381.03	8669.87	94.00	0.05	-0.00	0.05
	17755.00	89.85	268.51	266.2	470.21	-8752.11	7280.20	2381.20	8764.63	95.00	0.46	-0.09	-0.45
	17849.00	89.85	266.79	269.0	466.36	-8846.02	7280.45	2381.45	8858.24	94.00	1.83	0.00	-1.83
	17944.00	89.78	265.74	266.2	460.17	-8940.82	7280.75	2381.75	8952.62	95.00	1.11	-0.07	-1.11
	18038.00	89.94	265.97	266.2	453.38	-9034.57	7280.98	2381.98	9045.93	94.00	0.30	0.17	0.24
	18132.00	90.09	265.47	269.0	446.36	-9128.31	7280.96	2381.96	9139.22	94.00	0.56	0.16	-0.53
	18199.00	90.00	268.18	266.2	442.65	-9195.20							