

# Construction and Stormwater Inspection

January 17, 2023

Operator: ENERPLUS RESOURCES (USA) CORPORATION - #10177

Location ID: 478120

Inspection Document #: 697504482

Weld County, CO

SWSW Section 26 T8N R67W

Chris Binschus  
Reclamation Specialist, COGCC

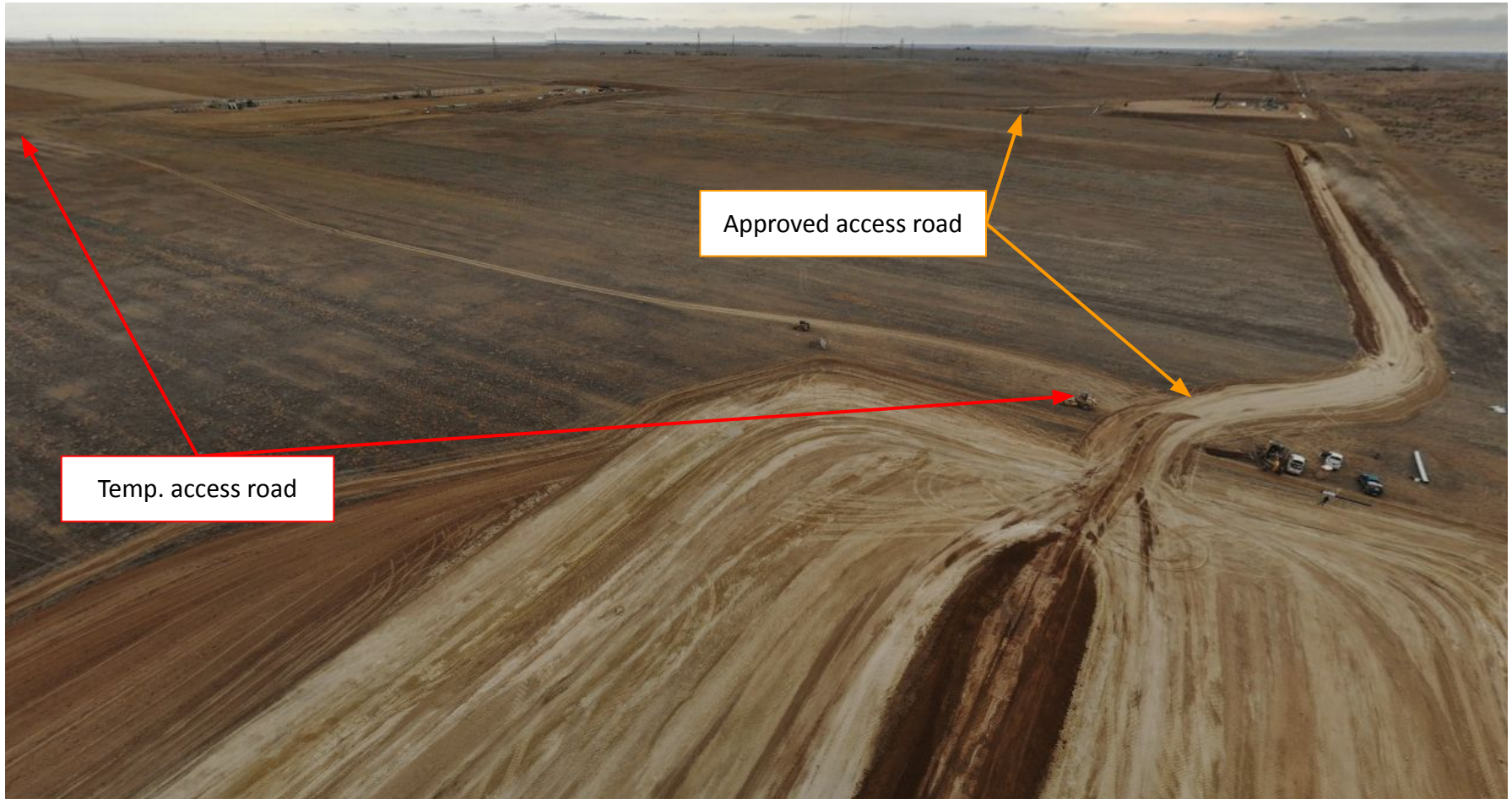


**COLORADO**  
**Oil & Gas Conservation**  
**Commission**

Department of Natural Resources



**Photo 1.** COGCC drone imagery illustrates the location and a disturbance area of 7.95 acres. The stockpile observed in the central location is topsoil from the access road being salvaged. Note- Operator was utilizing a temporary access road north of the location that was not permitted but is owned by Enerplus. See next photo for additional details.



**Photo 2.** COGCC drone imagery illustrates the temporary access road north of the location that was not permitted and the approved access road.



Inspection Photos  
Location Name: Calgary Streets/  
Location ID: 478120



**Photo 3.** Photo taken from the southern location, facing West. Photo illustrates the fill slope material has filled in the temporary stormwater ditch and berm BMP. Note- Operator appears to be constructing a detention pond or detention berm along the southern location per Weld County standards.



**Photo 4.** Photo taken from the southwestern location, facing East. Photo illustrates the temporary stormwater ditch and berm BMP without fill slope material.



Inspection Photos  
Location Name: Calgary Streets/  
Location ID: 478120



**Photo 5.** Photo taken from the southwestern location, facing East. Photo illustrates what appears to be the start of construction for the detention pond or detention berm.



**Photo 6.** Photo taken from the northwestern location, facing East. Photo illustrates the temporary stormwater ditch and berm BMP and the topsoil stockpile.

Inspection Photos  
Location Name: Calgary Streets/  
Location ID: 478120



**Photo 7.** Photo taken from a portion of the access road, facing West. Photo illustrates the Operator is stockpiling/applying topsoil to an approximate depth of 6" along the ditch area of the access road to facilitate final reclamation.



**Photo 8.** Photo taken from the entrance of the approved access road, facing South. Operator is in process of constructing the access road and completing the culvert installation.