



# **GMT Exploration SURFACE POST JOB REPORT**

**Redstone 6-65 24-36 #1HN 05-039-06703  
S:24 T:6S R:65W Elbert CO**

CallSheet #: 81182  
Proposal #: 59473



**SURFACE Post Job Report**

**Attention:** Trevor Smith | (720) 335-9045 | trevor.smith@iptenergyservices.com

GMT Exploration

1560 BROADWAY, STE 2000 | DENVER, CO 80202

---

Dear Trevor Smith,

Thank you for the opportunity to provide cementing services on this well. American Cementing strives to achieve complete customer satisfaction. If you have any questions regarding the services or data provided, please contact American Cementing at any time.

Sincerely,

**Jason Creel**

Field Engineer Lead | (307) 256-0306 | jason.creel@americacementing.com

**Field Office**      1716 E Allison Rd, Cheyenne, WY 82007  
Phone: (307) 414-0049

## Job Details & Summary

### Geometry

Type	Function	OD (in)	ID (in)	Weight (lb/ft)	Top (ft)	Bottom (ft)	Excess (%)
Open Hole	Outer		12.25		0	2740	30
Casing	Inner	9.625	8.921	36	0	2729	0

### Equipment / People

Unit Type	Unit
Cement Trailer Float	CTF-002
Cement Trailer Float	CTF-338
Cement Utility Float	CUF(FIF)-163
Cement Pump Float	CPF-182

### Timing

Event	Date/Time
Call Out	4/28/2022 01:00
Depart Facility	4/28/2022 04:00
On Location	4/28/2022 07:30
Rig Up Iron	4/28/2022 09:00
Job Started	4/28/2022 18:28
Job Completed	4/29/2022 00:01
Rig Down Iron	4/29/2022 01:00
Depart Location	4/29/2022 03:00

### General Job Information

Metrics	Value
Well Fluid Density	8.5 lb/gal
Well Fluid Type	WBM
Rig Circulation Vol	305 bbls
Rig Circulation Time	0.75 hours
Calculated Displacement	207.4 bbls
Actual Displacement	207.4 bbls
Total Spacer to Surface	0 bbls
Total CMT to Surface	0 bbls
Well Topped Out	Yes
Top Out Volume	19 bbls

### Casing Equipment

Type	Description	Qty
CENTRALIZER,9-5/8"NON-WELD	Bowstring	32

### Job Details

Metrics	Value
Flare Prior to Job	No
Flare Prior to Job	0 units
Flare During Job	No
Flare During Job	0 units
Flare at End of Job	No
Flare at End of Job	0 units
Well Full Prior to Job	Yes
Well Fluid Density Into Well	8.5 lb/gal
Well Fluid Density Out of Well	8.5 lb/gal

### Job Details (cont.)

Metrics	Value
BHCT	86 °F
BHST	110 °F

### Water Analysis

Metrics	Value	Recommended
Water Source	Flat Tank	
Temperature	60 °F	50-80 °F
pH Level	7	5.5-8.5
Chlorides	0 mg/L	0-3000 mg/L
Total Alkalinity	140	0-1000
Total Hardness	250 mg/L	0-500 mg/L
Carbonates	40 mg/L	0-100 mg/L
Sulfates	<200 mg/L	0-1500 mg/L
Potassium	0 mg/L	0-3000 mg/L
Iron	0 mg/L	0-300 mg/L

### Circulation

Lost Circulation Experienced
No

### Job Execution Information

Fluid	Product	Function	Density (lb/gal)	Yield (ft <sup>3</sup> /sk)	Water Rq. (gal/sk)	Water Rq. (gal/bbl)	Volume (sks)	Volume (bbl)	Designed Top (ft)
1	Fresh Water	Flush	8.34			42.00		20.00	0
2	Lead	Lead	12.00	2.41	14.09		315.00	135.04	0
3	Tail	Tail	14.20	1.46	7.34		350.00	91.11	1500
4	Fresh Water	DisplacementFinal	8.34			42.00		207.40	0

### Job Fluid Details

Fluid	Type	Fluid	Product	Function	Conc.	Uom
2	Lead	Lead	ASTM TYPE III	Cement	100.00	%
2	Lead	Lead	A-7P	Accelerator	2.00	lb/sk
2	Lead	Lead	FP-24	Defoamer	0.30	%BWOB
2	Lead	Lead	IntegraSeal POLI	LostCirculation	0.25	lb/sk
2	Lead	Lead	XCem-1101	Thixotropic	2.00	lb/sk
3	Tail	Tail	ASTM TYPE III	Cement	100.00	%

## Job Logs

Line	Event	Date (MM/DD/YY)	Time (HH:MM)	Density (lb/gal)	Pump Rate (bpm)	Pump Volume (bbls)	Pipe Pressure (psi)	Annular Pressure (psi)	Comment
1	Call Out	4/28/2022	01:00						Customer requested for Crew 8:00 On Location Time
2	Depart AC Yard	4/28/2022	04:00						AC Crew has Journey Management and Departs from Shop
3	Arrive on Location	4/28/2022	07:30						AC Crew Arrives on Location and Meets with Company Representative
4	Safety Meeting	4/28/2022	08:00						AC Crew has Safety Meeting Over Spotting Trucks and Rigging Up Iron
5	Rig Up Iron	4/28/2022	09:00						AC Crew Rigged Up Iron and Hoses
6	Waiting	4/28/2022	10:00						Waiting on Rig to Finish Drilling and Running Casing
7	Safety Meeting	4/28/2022	18:00						AC Crew has Safety Meeting with Rig Crew and Company Representative Over Job and Hazards
8	Fill Lines	4/28/2022	18:28	8.34	4	3	100		Fill Pump and Lines
9	Pressure Test	4/28/2022	18:29	8.34	0.5	0.5	3700		Pressure Test Iron and Values 3700 PSI
10	Pump Spacer	4/28/2022	18:31	8.34	4	20	200		Pump 20 bbls of Fresh Water Spacer with Blue Dye
11	Pump Lead Cement	4/28/2022	18:36	12	4	135	200		Pumped 135 bbls of 12 PPG Lead Cement (315 Sks, 2.41 Yield, 14.09 Gal/Sk)
12	Pump Tail Cement	4/28/2022	10:07	14.2	4	91	200		Pumped 91 bbls of 14.2 Tail Cement (350 Sks, 1.46 Yield, 7.34 Gal/Sk)
13	Shutdown	4/28/2022	19:28						Shutdown / Drop Plug
14	Displacement	4/28/2022	19:35	8.34	4	10	100		Pumped First 10 bbls of Fresh Water Displacement
15	Displacement	4/28/2022	19:38	8.34	4	197.6	500		Pump D8-22 Displacement / Total of 207.6 bbls of Displacement
16	Land Plug	4/28/2022	20:32						Land Plug at 207.6 bbls of Displacement / FCP 800 PSI and took to 1450 PSI
17	Check Floats	4/28/2022	20:38						Check Floats / Floats Held 1.5 bbls back
18	Other	4/28/2022	21:00						Waiting on top out cement to arrive on location, cement arrive at 2230
19	Pump Cement	4/28/2022	23:00	12.5	1	19	100		Pump top out cement, 19 bbls cement @ 12.5 ppg pumped, (50 sks, 2.11 Y, 11.9 gal/sk)
20	Shutdown	4/28/2022	23:59						Shutdown, watched cement for 20 mins and did not fall
21	Safety Meeting	4/29/2022	00:30						Safety meeting
22	Rig Down Iron	4/29/2022	01:00						Rigged down all equipment
23	Depart Location	4/29/2022	03:00						Crew departed location

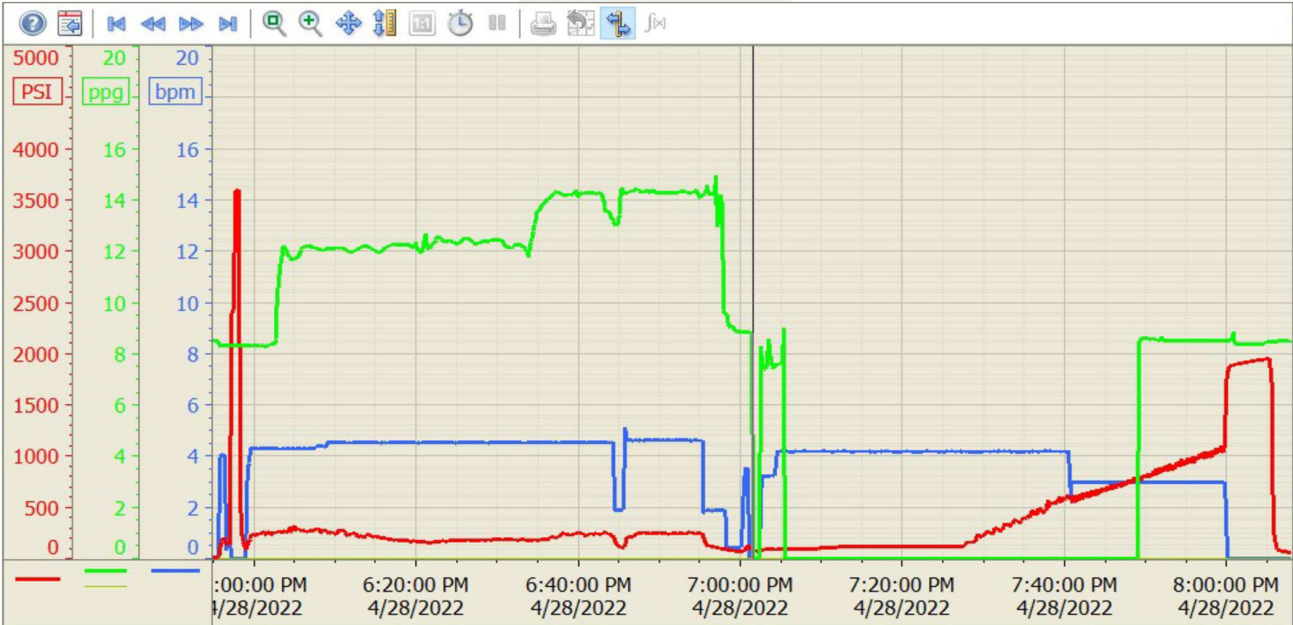
# Pump Diagrams

Summary Trend

GMT Exp 6-65 24-36 1H

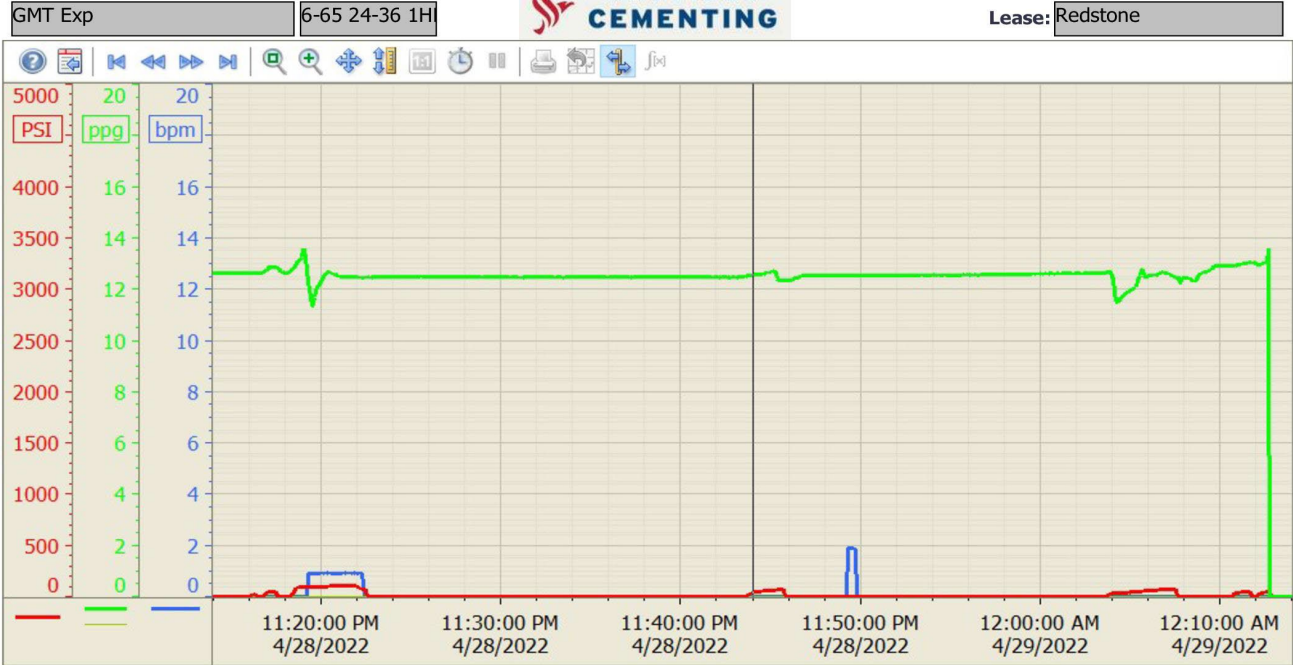


Lease: Redstone



4/28/2022 8:13:22 PM

Summary Trend



4/29/2022 12:44:14 A