

# WARDELL 7A 1 (05-123-17602): Off-Location Flowline Abandonment

40.237500, -104.699830

NESE Sec. 7 T3N, R65W, 6th PM

Weld County, Colorado

Crestone Peak Resources (10633)

Flowline Unique OperFeatID	Line Type	Start Location	Start Location Latitude	Start Location Longitude	End Location	End Location Latitude (Cut Point)	End Location Longitude (Cut Point)	Approx. Length to Abandon (ft)
12317602_FL	Multiphase	Wellhead	40.237500	-104.699830	Separator	40.235268	-104.700074	855



# Wardell 7A 2 (05-123-17609): Off-Location Flowline Abandonment

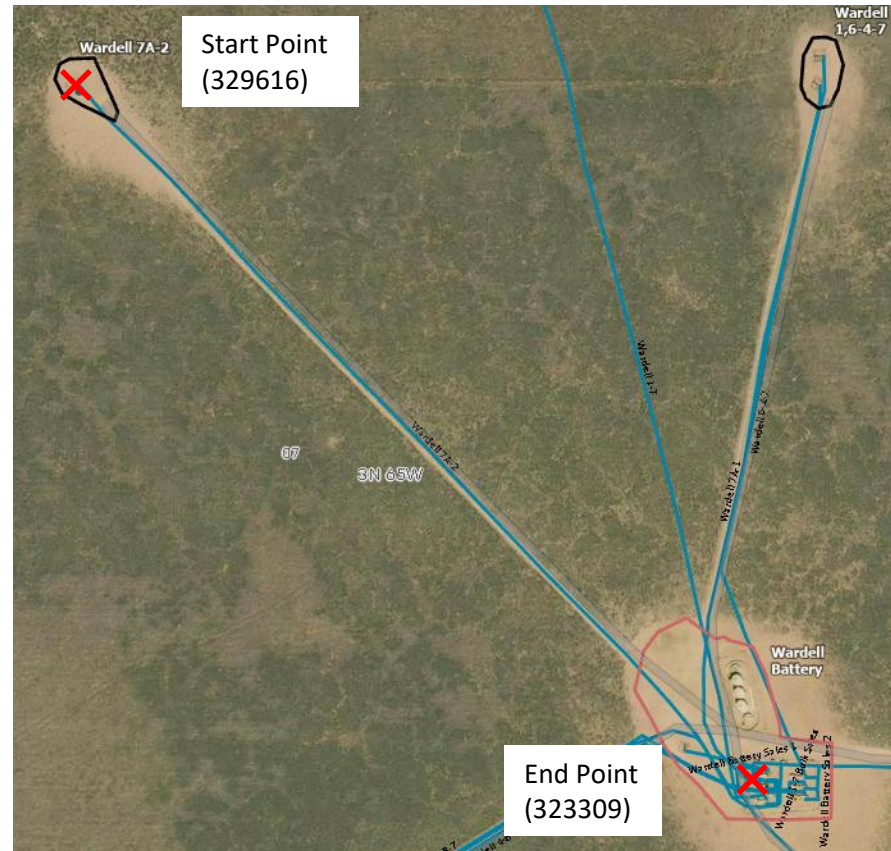
40.237490, -104.702943

NWSE Sec. 7 T3N, R65W, 6th PM

Weld County, Colorado

Crestone Peak Resources (10633)

Flowline Unique OperFeatID	Line Type	Start Location	Start Location Latitude	Start Location Longitude	End Location	End Location Latitude (Cut Point)	End Location Longitude (Cut Point)	Approx. Length to Abandon (ft)
12317609_FL	Multiphase	Wellhead	40.237490	-104.702943	Separator	40.235268	-104.700074	1460



# Wardell 7A 3 (05-123-17610): Off-Location Flowline Abandonment

40.234210, -104.703086  
SWSE Sec. 7 T3N, R65W, 6th PM  
Weld County, Colorado  
Crestone Peak Resources (10633)

Flowline Unique OperFeatID	Line Type	Start Location	Start Location Latitude	Start Location Longitude	End Location	End Location Latitude (Cut Point)	End Location Longitude (Cut Point)	Approx. Length to Abandon (ft)
12317610_FL	Multiphase	Wellhead	40.234210	-104.703086	Separator	40.235268	-104.700074	1100

