

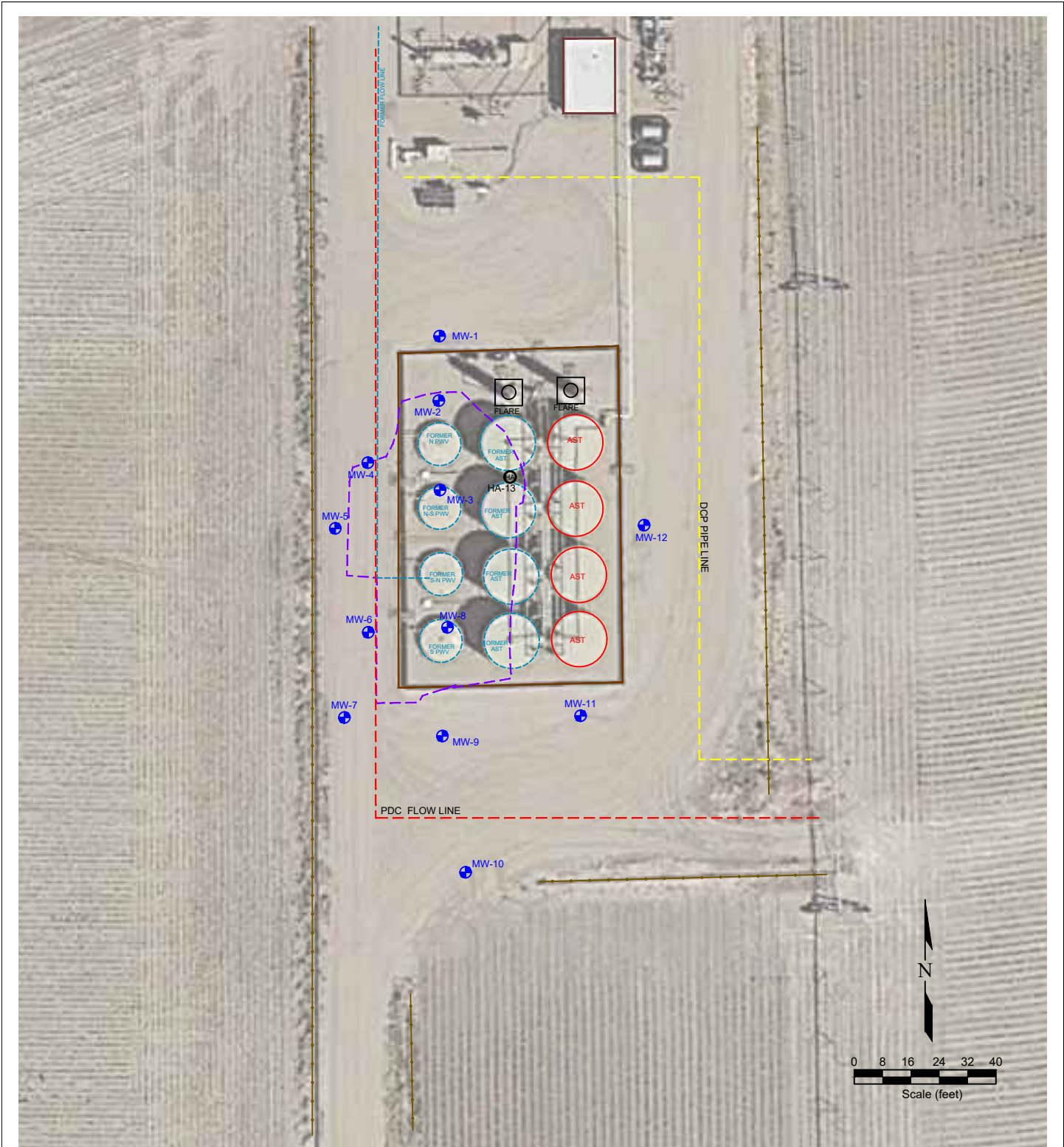
USGS 7.5 MINUTE SERIES (TOPOGRAPHIC)

Figure 1
SITE LOCATION MAP

PDC Energy, Inc. ~ Schmunk EF Offsite Tank Battery #31
SWNE Sec. 31, T7N, R65W, 6th PM
 Weld County, Colorado
 40.534297°, -104.701619°

Project # C022-010	Facility # 436119	Remediation # 22766
Date 12/27/22	Reviewed by PH	Filename 22010T





LEGEND

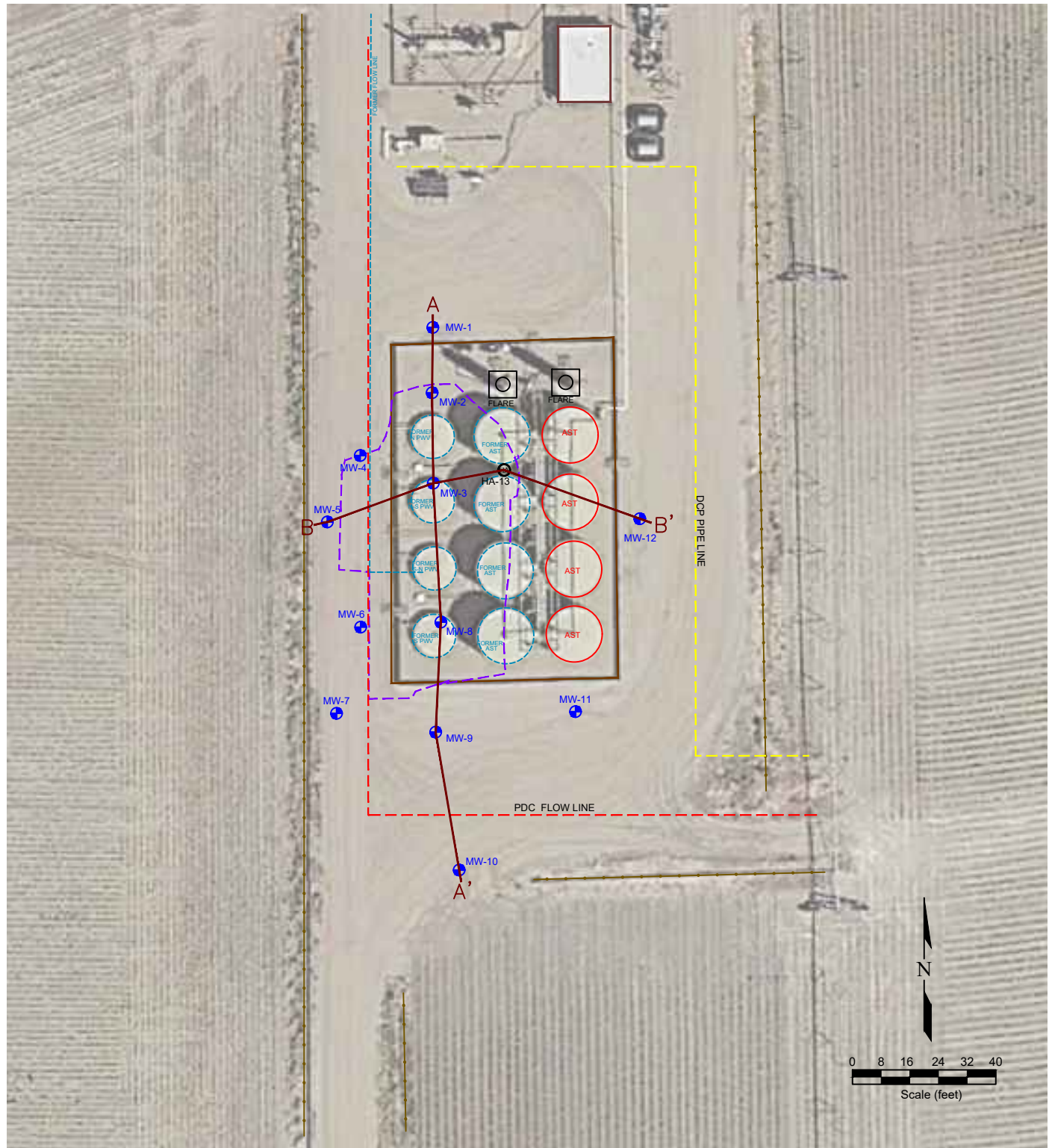
MONITORING WELL	ABOVE GROUND STORAGE TANK	FORMER FACILITY	CONTAINMENT WALL
HAND AUGERED WELLS	FORMER BUILDING	FORMER FACILITY	EXTENT OF EXCAVATION
	BUILDING	FORMER FACILITY	CONTAINMENT WALL
		PDC FLOW LINE	DCP PIPELINE

**Figure 2
SITE MAP**

**PDC Energy, Inc. ~ Schmunk EF Offsite Tank Battery #31
SWNE Sec. 31, T7N, R65W, 6th PM
Weld County, Colorado
40.534297°, -104.701619°**

Project No. C022-010	Facility # 436119	Remediation # 22766
Date 12/20/22	Reviewed By PH	Filename 22010QP





LEGEND

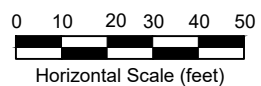
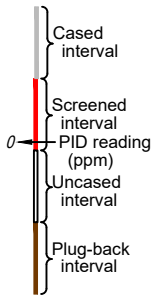
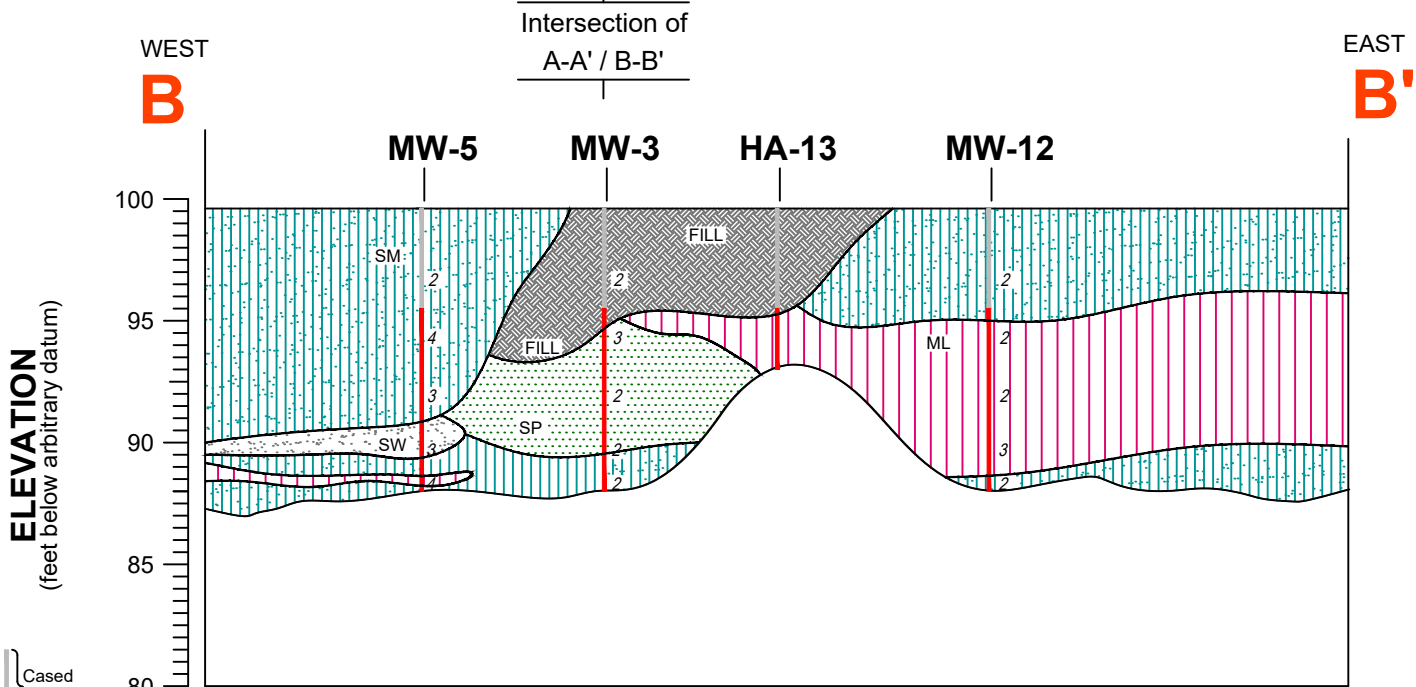
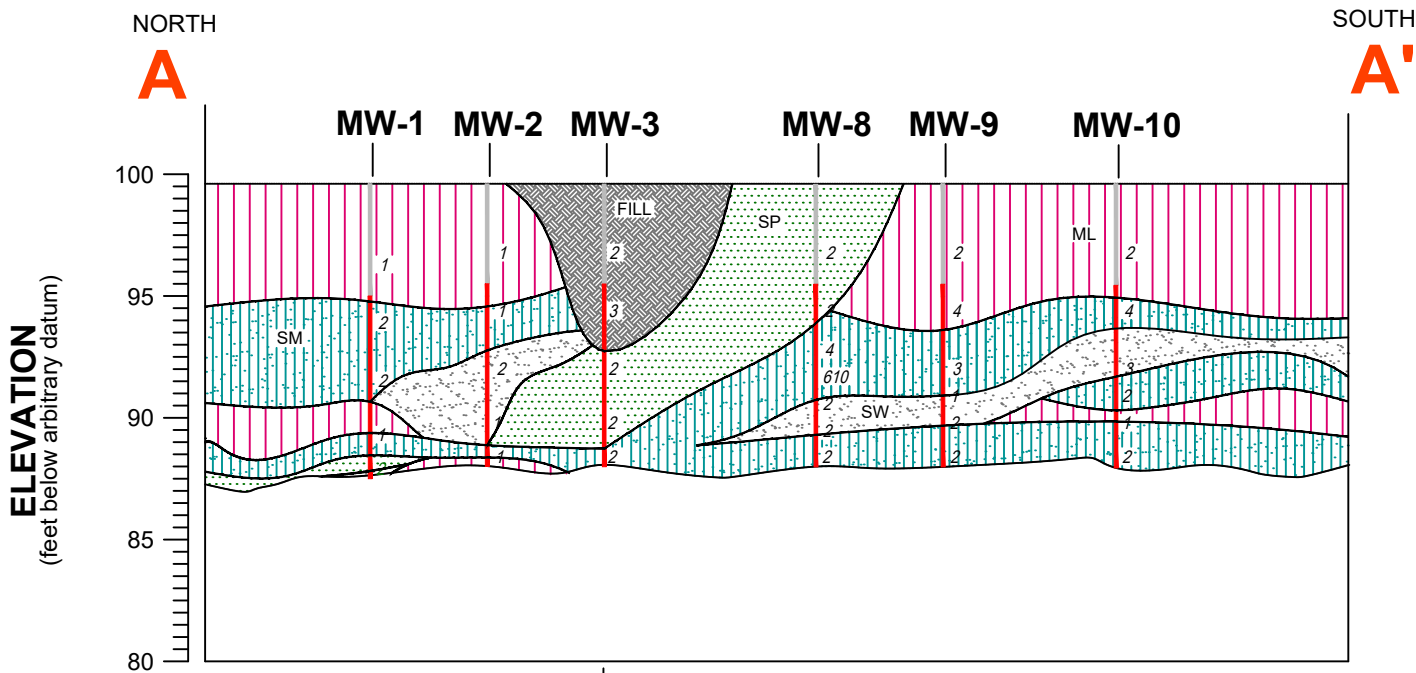
MONITORING WELL	ABOVE GROUND STORAGE TANK	FORMER FACILITY	FORMER FACILITY	CONTAINMENT WALL
HAND AUGURED WELLS	FORMER FACILITY	FORMER FACILITY	FORMER FACILITY	EXTENT OF EXCAVATION
	BUILDING	BUILDING	BUILDING	CONTAINMENT WALL
			PDC FLOW LINE	DCP PIPELINE
			CROSS SECTION CUT LINE	

Figure 3
CROSS SECTION MAP

PDC Energy, Inc. ~ Schmunk EF Offsite Tank Battery #31
SWNE Sec. 31, T7N, R65W, 6th PM
 Weld County, Colorado
 40.534297°, -104.701619°

Project No. C022-010	Facility # 436119	Remediation # 22766
Date 12/20/22	Reviewed By PH	Filename 22010QP





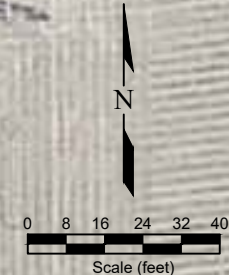
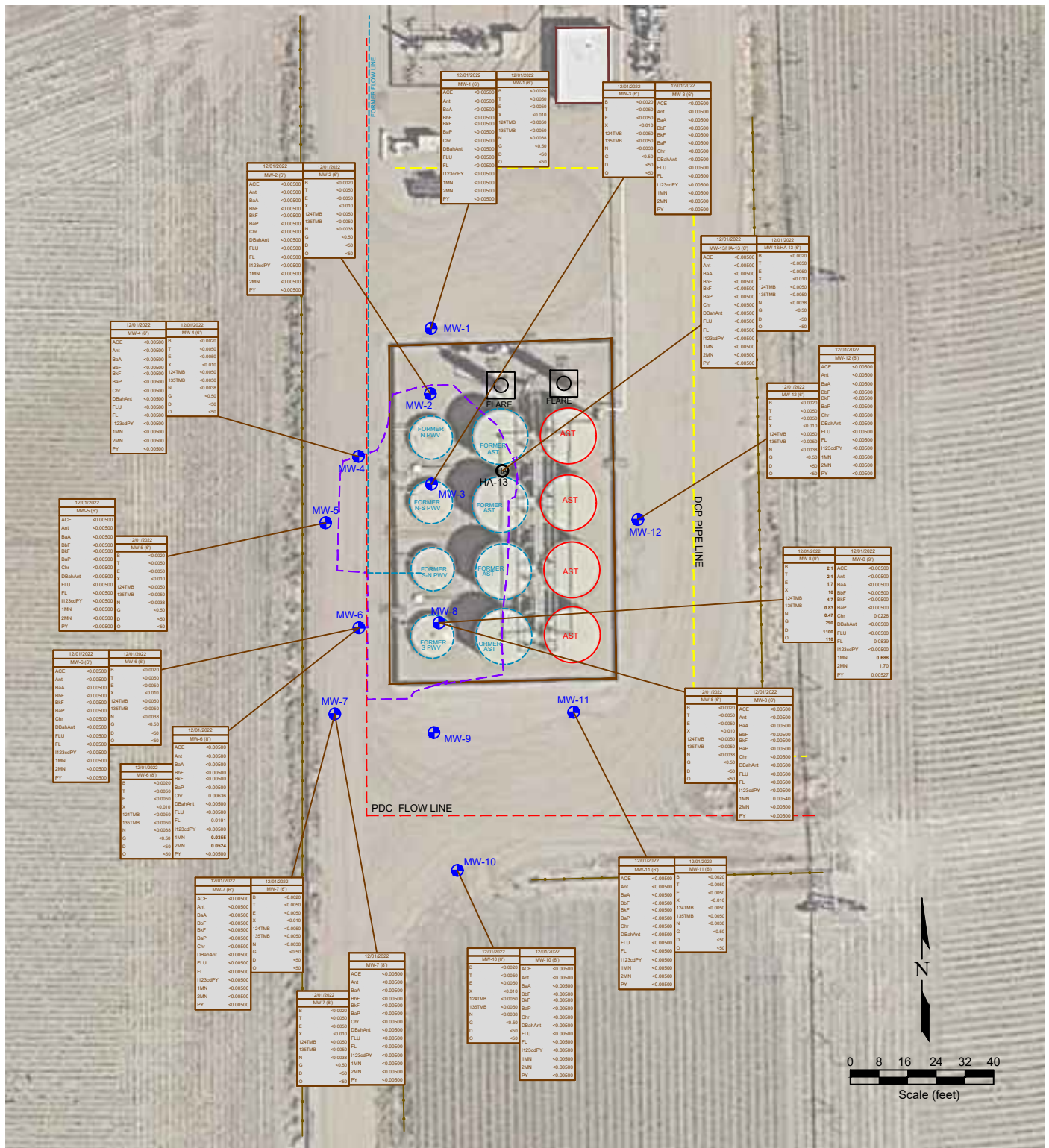
LEGEND

Clay, high plasticity	Sand, well-graded	FILL
Clay, low plasticity	Sand, poorly-graded	Asphalt
Silt, high plasticity	Sand, clayey	Concrete
Silt, low plasticity	Sand silty	Basin fill
Clay, silty, high plasticity	Gravel, well-graded	Claystone
Clay, silty, low plasticity	Gravel, poorly-graded	Siltstone
Silt, clayey, high plasticity	Gravel, clayey	Shale
Silt, clayey, low plasticity	Gravel, silty	Sandstone

Figure 4
CROSS SECTION A-A' and B-B'

PDC Energy, Inc. ~ Schmunk EF Offsite Tank Battery #31
SWNE Sec. 31, T7N, R65W, 6th PM
 Weld County, Colorado
 40.534297°, -104.701619°

Project No. C022-010	Facility # 436119	Remediation # 22766	
Date 12/27/22	Reviewed by PH	Filename 22010X	



LEGEND

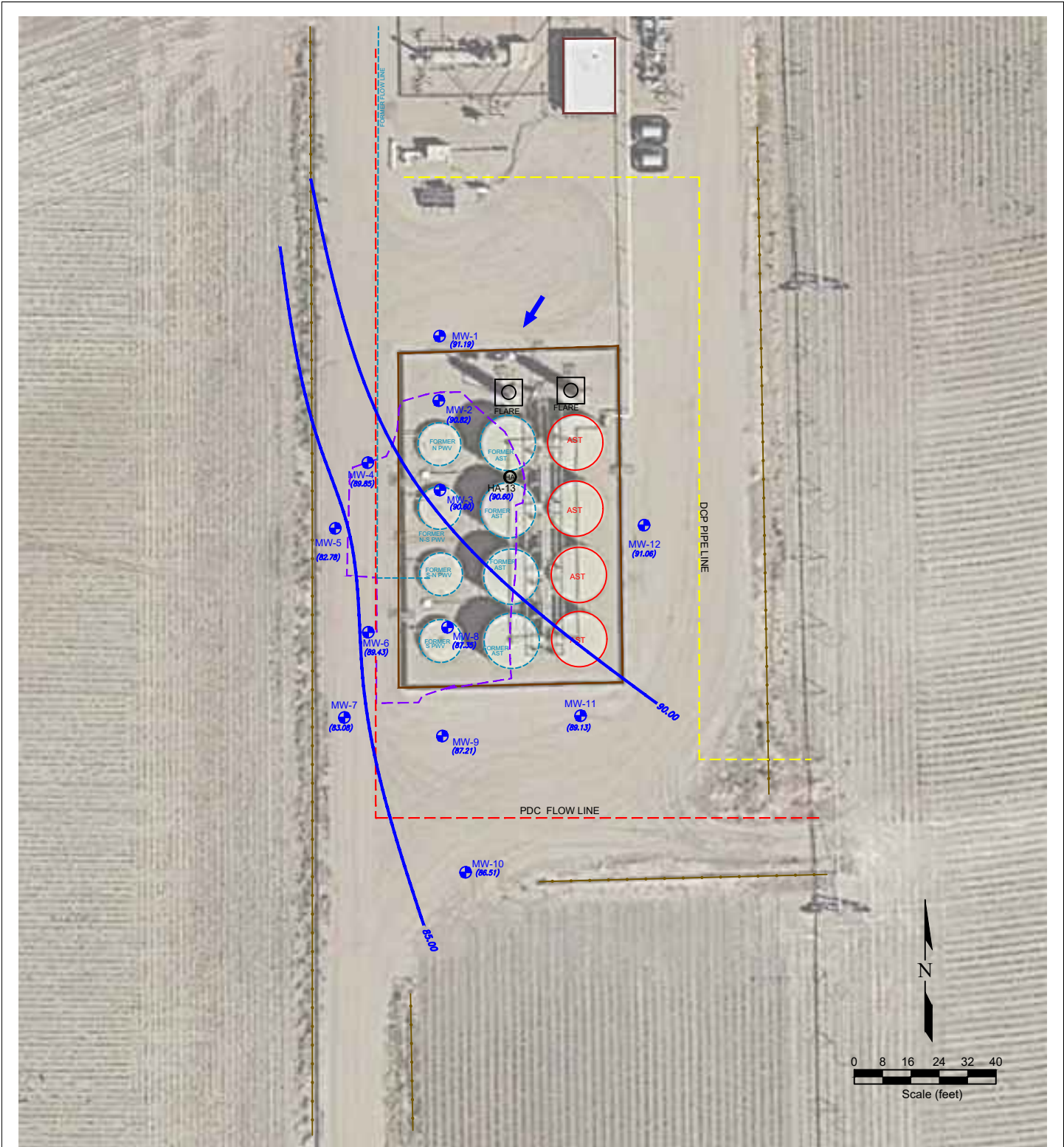
- MONITORING WELL
- ABOVE GROUND STORAGE TANK
- HAND AUGURED WELLS
- FORMER FORMER FACILITY
- BUILDING BUILDING
- CONTAINMENT WALL
- EXTENT OF EXCAVATION
- PDC FLOW LINE
- DCP PIPELINE

12/01/2022	DATE SAMPLED	12/01/2022	DATE SAMPLED
MW-1 (F)	SAMPLE ID and DEPTH (ft)	MW-7 (F)	SAMPLE ID and DEPTH (ft)
ACE	<-0.0050	B	<-0.0020
Ant	<-0.0050	Ant	<-0.0050
BAA	<-0.0050	BAA	<-0.0050
BaP	<-0.0050	BaP	<-0.0050
BaP	<-0.0050	BaP	<-0.0050
BaP	<-0.0050	BaP	<-0.0050
Chv	<-0.0050	Chv	<-0.0050
DBaAnt	<-0.0050	DBaAnt	<-0.0050
FLU	<-0.0050	FLU	<-0.0050
FL	<-0.0050	FL	<-0.0050
1123aPPY	<-0.0050	1123aPPY	<-0.0050
1MN	<-0.0050	1MN	<-0.0050
2MN	<-0.0050	2MN	<-0.0050
PY	<-0.0050	PY	<-0.0050

**Figure 5
SOIL CHEMISTRY MAP**

**PDC Energy, Inc. ~ Schmunk EF Offsite Tank Battery #31
SWNE Sec. 31, T7N, R65W, 6th PM
Weld county, Colorado
40.534297°, -104.701619°**

Project No. C022-010	Facility # 436119	Remediation # 22766
Date 12/20/22	Reviewed By PH	Filename 22010QP



LEGEND

- ⊕ MONITORING WELL
 - ⊕ ABOVE GROUND STORAGE TANK
 - FORMER FORMER FACILITY
 - BUILDING BUILDING
 - CONTAINMENT WALL
 - EXTENT OF EXCAVATION
 - CONTAINMENT WALL
 - PDC FLOW LINE
 - PDC FLOW LINE
 - DCP PIPELINE
-
- (90.00) GROUND WATER ELEVATION (ft above arbitrary datum)
 - ↻ WATER TABLE CONTOUR
 - GROUND WATER FLOW DIRECTION

Figure 6
INFERRED GROUND WATER CONTOUR MAP
 December 2, 2022

PDC Energy, Inc. ~ Schmunk EF Offsite Tank Battery #31
SWNE Sec. 31, T7N, R65W, 6th PM
 Weld County, Colorado
 40.534297°, -104.701619°

Project No. C022-010	Facility # 436119	Remediation # 22766	
Date 12/20/22	Reviewed By PH	Filename 22010QP	

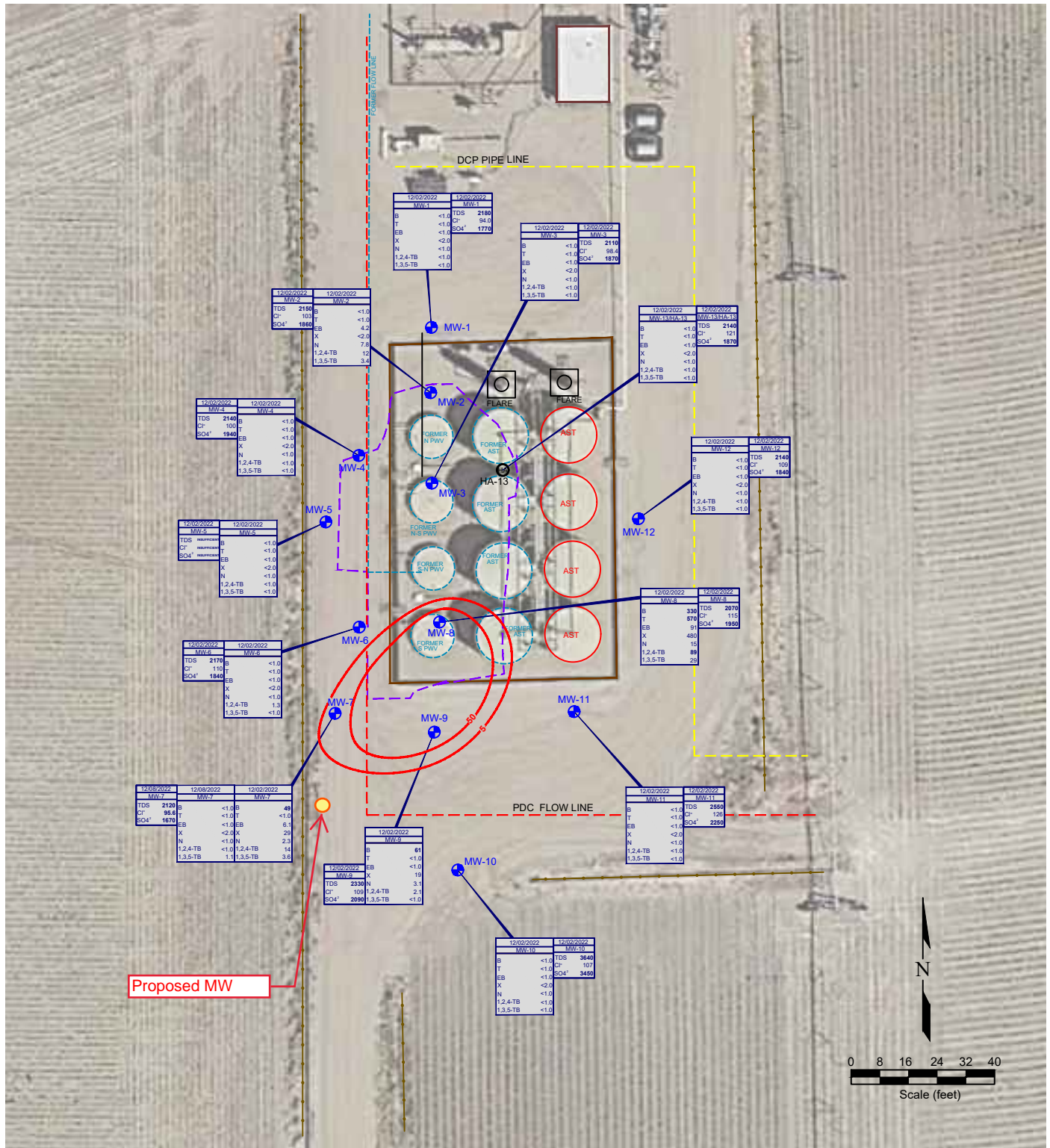


Figure 7
GROUNDWATER CHEMISTRY MAP
 December 2, 2022

PDC Energy, Inc. ~ Schmunk EF Offsite Tank Battery #31
SWNE Sec. 31, T7N, R65W, 6th PM
 Weld County, Colorado
 40.534297°, -104.701619°

Project No. C022-010	Facility # 436119	Remediation # 22766	
Date 12/29/22	Reviewed By PH	Filename 22010QP	