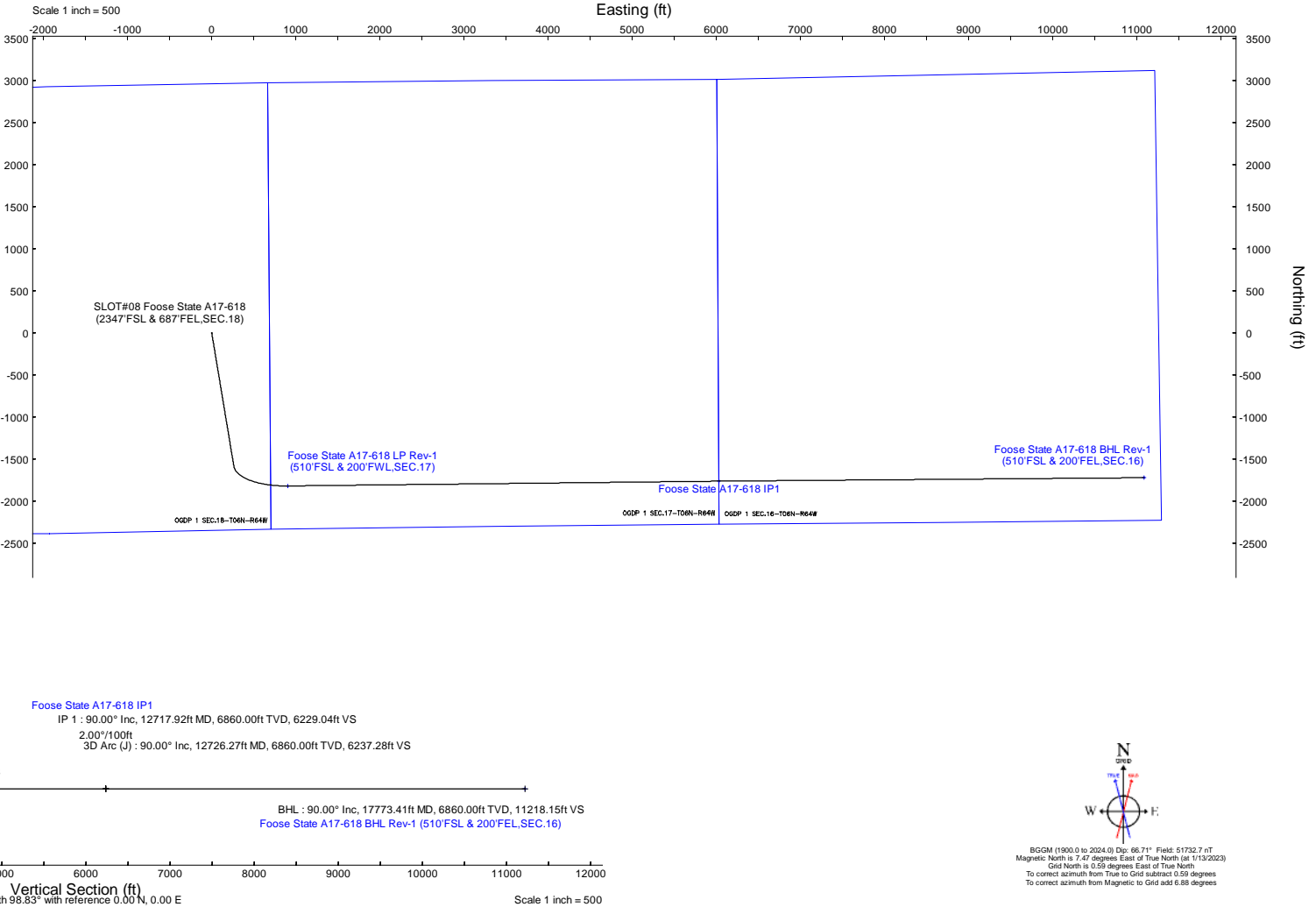
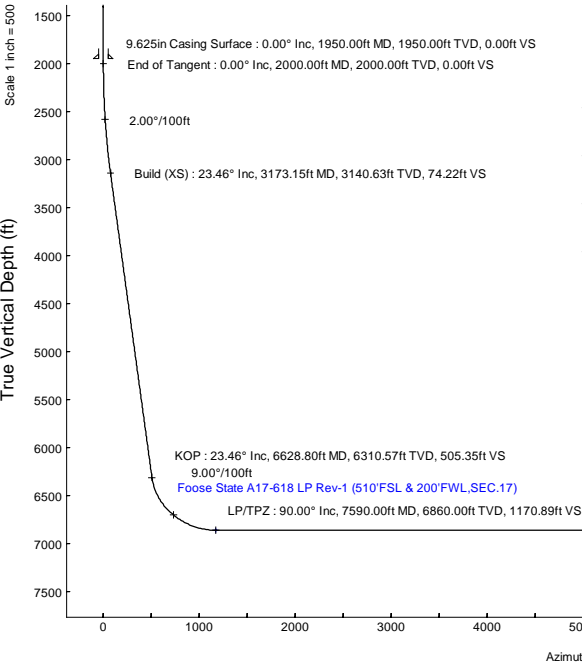


NOBLE ENERGY, INC

Location:	COLORADO	Slot:	SLOT#08 Foose State A17-618 (2347FSL & 687FEL,SEC.18)
Field:	WELD COUNTY (NOBLE NAD 83 GRID)	Well:	Foose State A17-618
Facility:	SEC.18-T06N-R64W	Wellbore:	Foose State A17-618 PWB

Plot reference wellpath is Foose State A17-618 (REV-A.0) PWP	Grid System: NAD83 / Lambert Colorado SP, Northern Zone (501), US feet
True vertical depths are referenced to (4705GL+30KB@4735RKB) (RKB)	North Reference: Grid north
Reference wellpath measured depths are referenced to (4705GL+30KB@4735RKB) (RKB)	Scale: True distance
(4705GL+30KB@4735RKB) (RKB) to Mean Sea Level: 4735 feet	Coordinates are in feet referenced to Slot
Mean Sea Level to Ground level (At Slot: SLOT#08 Foose State A17-618 (2347FSL & 687FEL,SEC.18)): 0 feet	Depths are in feet
Offset wellpath MDs are referenced to each path's default MD datum	Created by: guemaler on 2023-01-13; Database: WA_Denver

Location Information							
Facility Name				Grid East (US ft)	Grid North (US ft)	Latitude	Longitude
SEC.18-T06N-R64W				3253919.886	1420891.224	40°29'5.5760"N	104°35'13.6680"W
Slot	Local N (ft)	Local E (ft)	Grid East (US ft)	Grid North (US ft)	Latitude	Longitude	
SLOT#08 Foose State A17-618 (2347FSL & 687FEL,SEC.18)	-0.95	261.50	3254181.381	1420890.274	40°29'5.5400"N	104°35'10.2840"W	
(4705GL+30KB@4735RKB) (RKB) to Ground level (At Slot: SLOT#08 Foose State A17-618 (2347FSL & 687FEL,SEC.18))						4735R	
Mean Sea Level to Ground level (At Slot: SLOT#08 Foose State A17-618 (2347FSL & 687FEL,SEC.18))						0R	
(4705GL+30KB@4735RKB) (RKB) to Mean Sea Level						4735R	



Well Profile Data								
Design Comment	MD (ft)	Inc (°)	Az (°)	TVD (ft)	Local N (ft)	Local E (ft)	DLS (°/100ft)	VS (ft)
SHL	30.00	0.000	170.567	30.00	0.00	0.00	0.00	0.00
End of Tangent	2000.00	0.000	170.567	2000.00	0.00	0.00	0.00	0.00
Build (XS)	3173.15	23.463	170.567	3140.63	-233.66	38.82	2.00	74.22
KOP	6628.80	23.463	170.567	6310.57	-1590.95	264.32	0.00	505.35
LP/TPZ	7590.00	90.000	89.366	6860.00	-1819.58	902.32	9.00	1170.89
IP 1	12717.92	90.000	89.366	6860.00	-1762.86	6029.93	0.00	6229.04
3D Arc (J)	12726.27	90.000	89.533	6860.00	-1762.78	6038.28	2.00	6237.28
BHL	17773.41	90.000	89.533	6860.00	-1721.67	11085.25	0.00	11218.15

Targets								
Name	MD (ft)	TVD (ft)	Local N (ft)	Local E (ft)	Grid East (US ft)	Grid North (US ft)	Latitude	Longitude
OGDP 1 SEC.16-T06N-R64W	N/A	-37.00	7372.61	199.34	3254380.72	1428262.61	40°30'19.3680"N	104°35'8.7200"W
OGDP 1 SEC.17-T06N-R64W	N/A	-37.00	7372.61	199.34	3254380.72	1428262.61	40°30'19.3680"N	104°35'8.7200"W
OGDP 1 SEC.18-T06N-R64W	N/A	-37.00	7372.61	199.34	3254380.72	1428262.61	40°30'19.3680"N	104°35'8.7200"W
Foose State A17-618 BHL Rev-1 (510°FSL & 200°FWL,SEC.16)	17773.41	6860.00	-1721.67	11085.25	3265266.23	1419168.67	40°28'48.3749"N	104°32'47.0700"W
Foose State A17-618 IP1	12717.92	6860.00	-1762.86	6029.93	3260211.09	1419127.48	40°28'48.5000"N	104°33'52.4915"W
Foose State A17-618 LP Rev-1 (510°FSL & 200°FWL,SEC.17)	7590.00	6860.00	-1819.58	902.32	3255083.67	1419070.76	40°28'48.4688"N	104°34'58.8508"W

Survey Program				
Start MD (ft)	End MD (ft)	Tool	Model	Log Name/Comment
30.00	17773.41	OWSG MWD rev2	OWSG MWD rev2 (MS+IFR1)	Foose State A17-618 PWB



Planned Wellpath Report

Foose State A17-618 (REV-A.0) PWP

Page 1 of 7



REFERENCE WELLPATH IDENTIFICATION			
Operator	NOBLE ENERGY, INC	Well	Foose State A17-618
Field	WELD COUNTY (NOBLE NAD 83 GRID)	API/Legal	
Facility	SEC.18-T06N-R64W	Wellbore	Foose State A17-618 PWB
Slot	SLOT#08 Foose State A17-618 (2347'FSL & 687'FEL,SEC.18)		

REPORT SETUP INFORMATION			
Projection System	NAD83 / Lambert Colorado SP, Northern Zone (501), US feet	Software System	WellArchitect® 6.0
North Reference	Grid	User	Guenaler
Scale	0.999965	Report Generated	1/13/2023 at 6:08:04 PM
Convergence at slot	0.59° East	Database	WA_Denver

WELLPATH LOCATION						
	Local coordinates		Grid coordinates		Geographic coordinates	
	North[ft]	East[ft]	Easting[US ft]	Northing[US ft]	Latitude	Longitude
Slot Location	-0.95	261.50	3254181.38	1420890.27	40.4851500°	-104.5861900°
Facility Reference Pt			3253919.89	1420891.22	40.4851600°	-104.5871300°
Field Reference Pt			3000000.00	4454105.15	48.7761986°	-105.5000000°

WELLPATH DATUM			
Calculation method	Minimum curvature	(4705'GL+30'KB@4735'RKB) (RKB) to Facility Vertical Datum	4735.00ft
Horizontal Reference Pt	Slot	(4705'GL+30'KB@4735'RKB) (RKB) to Mean Sea Level	4735.00ft
Vertical Reference Pt	(4705'GL+30'KB@4735'RKB) (RKB)	(4705'GL+30'KB@4735'RKB) (RKB) to Ground Level at Slot (SLOT#08 Foose State A17-618 (2347'FSL & 687'FEL,SEC.18))	4735.00ft
MD Reference Pt	(4705'GL+30'KB@4735'RKB) (RKB)	Section Origin	N 0.00, E 0.00 ft
Field Vertical Reference	Mean Sea Level	Section Azimuth	98.83°



Planned Wellpath Report
Foose State A17-618 (REV-A.0) PWP
Page 2 of 7



REFERENCE WELLPATH IDENTIFICATION			
Operator	NOBLE ENERGY, INC	Well	Foose State A17-618
Field	WELD COUNTY (NOBLE NAD 83 GRID)	API/Legal	
Facility	SEC.18-T06N-R64W	Wellbore	Foose State A17-618 PWB
Slot	SLOT#08 Foose State A17-618 (2347'FSL & 687'FEL,SEC.18)		

WELLPATH DATA (186 stations) † = interpolated, ‡ = extrapolated station										
MD [ft]	Inclination [°]	Azimuth [°]	TVD [ft]	Vert Sect [ft]	North [ft]	East [ft]	Latitude	Longitude	DLS [°/100ft]	Comments
0.00†	0.000	170.567	0.00	0.00	0.00	0.00	40.4851500	-104.5861900	0.00	
30.00	0.000	170.567	30.00	0.00	0.00	0.00	40.4851500	-104.5861900	0.00	SHL
130.00†	0.000	170.567	130.00	0.00	0.00	0.00	40.4851500	-104.5861900	0.00	
230.00†	0.000	170.567	230.00	0.00	0.00	0.00	40.4851500	-104.5861900	0.00	
330.00†	0.000	170.567	330.00	0.00	0.00	0.00	40.4851500	-104.5861900	0.00	
430.00†	0.000	170.567	430.00	0.00	0.00	0.00	40.4851500	-104.5861900	0.00	
530.00†	0.000	170.567	530.00	0.00	0.00	0.00	40.4851500	-104.5861900	0.00	
630.00†	0.000	170.567	630.00	0.00	0.00	0.00	40.4851500	-104.5861900	0.00	
730.00†	0.000	170.567	730.00	0.00	0.00	0.00	40.4851500	-104.5861900	0.00	
830.00†	0.000	170.567	830.00	0.00	0.00	0.00	40.4851500	-104.5861900	0.00	
930.00†	0.000	170.567	930.00	0.00	0.00	0.00	40.4851500	-104.5861900	0.00	
1030.00†	0.000	170.567	1030.00	0.00	0.00	0.00	40.4851500	-104.5861900	0.00	
1130.00†	0.000	170.567	1130.00	0.00	0.00	0.00	40.4851500	-104.5861900	0.00	
1230.00†	0.000	170.567	1230.00	0.00	0.00	0.00	40.4851500	-104.5861900	0.00	
1330.00†	0.000	170.567	1330.00	0.00	0.00	0.00	40.4851500	-104.5861900	0.00	
1430.00†	0.000	170.567	1430.00	0.00	0.00	0.00	40.4851500	-104.5861900	0.00	
1530.00†	0.000	170.567	1530.00	0.00	0.00	0.00	40.4851500	-104.5861900	0.00	
1630.00†	0.000	170.567	1630.00	0.00	0.00	0.00	40.4851500	-104.5861900	0.00	
1730.00†	0.000	170.567	1730.00	0.00	0.00	0.00	40.4851500	-104.5861900	0.00	
1830.00†	0.000	170.567	1830.00	0.00	0.00	0.00	40.4851500	-104.5861900	0.00	
1930.00†	0.000	170.567	1930.00	0.00	0.00	0.00	40.4851500	-104.5861900	0.00	
2000.00	0.000	170.567	2000.00	0.00	0.00	0.00	40.4851500	-104.5861900	0.00	End of Tangent
2030.00†	0.600	170.567	2030.00	0.05	-0.15	0.03	40.4851496	-104.5861899	2.00	
2130.00†	2.600	170.567	2129.96	0.92	-2.91	0.48	40.4851420	-104.5861884	2.00	
2230.00†	4.600	170.567	2229.75	2.89	-9.10	1.51	40.4851250	-104.5861849	2.00	
2330.00†	6.600	170.567	2329.27	5.95	-18.73	3.11	40.4850985	-104.5861795	2.00	
2430.00†	8.600	170.567	2428.39	10.09	-31.78	5.28	40.4850626	-104.5861722	2.00	
2530.00†	10.600	170.567	2526.98	15.32	-48.23	8.01	40.4850174	-104.5861630	2.00	
2630.00†	12.600	170.567	2624.93	21.62	-68.06	11.31	40.4849629	-104.5861519	2.00	
2730.00†	14.600	170.567	2722.13	28.99	-91.26	15.16	40.4848991	-104.5861389	2.00	
2830.00†	16.600	170.567	2818.44	37.41	-117.78	19.57	40.4848262	-104.5861240	2.00	
2930.00†	18.600	170.567	2913.75	46.89	-147.61	24.52	40.4847442	-104.5861073	2.00	
3030.00†	20.600	170.567	3007.95	57.40	-180.70	30.02	40.4846532	-104.5860888	2.00	
3130.00†	22.600	170.567	3100.93	68.93	-217.01	36.05	40.4845533	-104.5860684	2.00	
3173.15	23.463	170.567	3140.63	74.22	-233.66	38.82	40.4845076	-104.5860591	2.00	Build (XS)
3230.00†	23.463	170.567	3192.78	81.31	-255.99	42.53	40.4844462	-104.5860466	0.00	
3330.00†	23.463	170.567	3284.52	93.79	-295.27	49.06	40.4843382	-104.5860246	0.00	
3430.00†	23.463	170.567	3376.25	106.27	-334.55	55.58	40.4842302	-104.5860026	0.00	
3530.00†	23.463	170.567	3467.98	118.74	-373.83	62.11	40.4841222	-104.5859806	0.00	
3630.00†	23.463	170.567	3559.71	131.22	-413.10	68.63	40.4840142	-104.5859586	0.00	
3730.00†	23.463	170.567	3651.44	143.69	-452.38	75.16	40.4839062	-104.5859366	0.00	
3830.00†	23.463	170.567	3743.18	156.17	-491.66	81.68	40.4837982	-104.5859146	0.00	
3930.00†	23.463	170.567	3834.91	168.65	-530.93	88.21	40.4836902	-104.5858926	0.00	
4030.00†	23.463	170.567	3926.64	181.12	-570.21	94.73	40.4835823	-104.5858706	0.00	
4130.00†	23.463	170.567	4018.37	193.60	-609.49	101.26	40.4834743	-104.5858486	0.00	



Planned Wellpath Report
Foose State A17-618 (REV-A.0) PWP
Page 3 of 7



REFERENCE WELLPATH IDENTIFICATION			
Operator	NOBLE ENERGY, INC	Well	Foose State A17-618
Field	WELD COUNTY (NOBLE NAD 83 GRID)	API/Legal	
Facility	SEC.18-T06N-R64W	Wellbore	Foose State A17-618 PWB
Slot	SLOT#08 Foose State A17-618 (2347'FSL & 687'FEL,SEC.18)		

WELLPATH DATA (186 stations) † = interpolated, ‡ = extrapolated station										
MD [ft]	Inclination [°]	Azimuth [°]	TVD [ft]	Vert Sect [ft]	North [ft]	East [ft]	Latitude	Longitude	DLS [°/100ft]	Comments
4230.00†	23.463	170.567	4110.10	206.07	-648.77	107.78	40.4833663	-104.5858266	0.00	
4330.00†	23.463	170.567	4201.83	218.55	-688.04	114.31	40.4832583	-104.5858046	0.00	
4430.00†	23.463	170.567	4293.57	231.03	-727.32	120.84	40.4831503	-104.5857826	0.00	
4530.00†	23.463	170.567	4385.30	243.50	-766.60	127.36	40.4830423	-104.5857606	0.00	
4630.00†	23.463	170.567	4477.03	255.98	-805.87	133.89	40.4829343	-104.5857386	0.00	
4730.00†	23.463	170.567	4568.76	268.46	-845.15	140.41	40.4828263	-104.5857166	0.00	
4830.00†	23.463	170.567	4660.49	280.93	-884.43	146.94	40.4827183	-104.5856946	0.00	
4930.00†	23.463	170.567	4752.23	293.41	-923.71	153.46	40.4826103	-104.5856726	0.00	
5030.00†	23.463	170.567	4843.96	305.88	-962.98	159.99	40.4825024	-104.5856506	0.00	
5130.00†	23.463	170.567	4935.69	318.36	-1002.26	166.51	40.4823944	-104.5856286	0.00	
5230.00†	23.463	170.567	5027.42	330.84	-1041.54	173.04	40.4822864	-104.5856066	0.00	
5330.00†	23.463	170.567	5119.15	343.31	-1080.82	179.56	40.4821784	-104.5855846	0.00	
5430.00†	23.463	170.567	5210.88	355.79	-1120.09	186.09	40.4820704	-104.5855626	0.00	
5530.00†	23.463	170.567	5302.62	368.26	-1159.37	192.62	40.4819624	-104.5855406	0.00	
5630.00†	23.463	170.567	5394.35	380.74	-1198.65	199.14	40.4818544	-104.5855186	0.00	
5730.00†	23.463	170.567	5486.08	393.22	-1237.92	205.67	40.4817464	-104.5854966	0.00	
5830.00†	23.463	170.567	5577.81	405.69	-1277.20	212.19	40.4816384	-104.5854746	0.00	
5930.00†	23.463	170.567	5669.54	418.17	-1316.48	218.72	40.4815305	-104.5854526	0.00	
6030.00†	23.463	170.567	5761.27	430.64	-1355.76	225.24	40.4814225	-104.5854306	0.00	
6130.00†	23.463	170.567	5853.01	443.12	-1395.03	231.77	40.4813145	-104.5854086	0.00	
6230.00†	23.463	170.567	5944.74	455.60	-1434.31	238.29	40.4812065	-104.5853866	0.00	
6330.00†	23.463	170.567	6036.47	468.07	-1473.59	244.82	40.4810985	-104.5853646	0.00	
6430.00†	23.463	170.567	6128.20	480.55	-1512.86	251.34	40.4809905	-104.5853426	0.00	
6530.00†	23.463	170.567	6219.93	493.02	-1552.14	257.87	40.4808825	-104.5853206	0.00	
6628.80	23.463	170.567	6310.57	505.35	-1590.95	264.32	40.4807758	-104.5852988	0.00	KOP
6630.00†	23.478	170.299	6311.67	505.50	-1591.42	264.40	40.4807745	-104.5852986	9.00	
6730.00†	26.248	149.812	6402.56	525.79	-1630.25	278.90	40.4806675	-104.5852479	9.00	
6830.00†	31.297	134.241	6490.31	560.96	-1667.56	308.69	40.4805643	-104.5851422	9.00	
6930.00†	37.717	123.052	6572.75	610.12	-1702.43	353.03	40.4804673	-104.5849841	9.00	
7030.00†	44.918	114.845	6647.87	672.08	-1734.02	410.82	40.4803790	-104.5847776	9.00	
7130.00†	52.572	108.531	6713.80	745.30	-1761.52	480.65	40.4803015	-104.5845276	9.00	
7230.00†	60.499	103.412	6768.92	827.98	-1784.28	560.79	40.4802368	-104.5842404	9.00	
7330.00†	68.593	99.047	6811.88	918.10	-1801.73	649.28	40.4801864	-104.5839229	9.00	
7430.00†	76.788	95.146	6841.62	1013.42	-1813.44	743.92	40.4801515	-104.5835832	9.00	
7530.00†	85.038	91.500	6857.40	1111.60	-1819.13	842.40	40.4801332	-104.5832294	9.00	
7590.00	90.000	89.366	6860.00 [†]	1170.89	-1819.58	902.32	40.4801302	-104.5830140	9.00	LP/TPZ
7630.00†	90.000	89.366	6860.00	1210.34	-1819.13	942.32	40.4801303	-104.5828703	0.00	
7730.00†	90.000	89.366	6860.00	1308.98	-1818.03	1042.31	40.4801305	-104.5825108	0.00	
7830.00†	90.000	89.366	6860.00	1407.62	-1816.92	1142.31	40.4801307	-104.5821513	0.00	
7930.00†	90.000	89.366	6860.00	1506.26	-1815.82	1242.30	40.4801309	-104.5817919	0.00	
8030.00†	90.000	89.366	6860.00	1604.90	-1814.71	1342.29	40.4801311	-104.5814324	0.00	
8130.00†	90.000	89.366	6860.00	1703.54	-1813.60	1442.29	40.4801313	-104.5810729	0.00	
8230.00†	90.000	89.366	6860.00	1802.18	-1812.50	1542.28	40.4801315	-104.5807135	0.00	
8330.00†	90.000	89.366	6860.00	1900.82	-1811.39	1642.27	40.4801316	-104.5803540	0.00	
8430.00†	90.000	89.366	6860.00	1999.46	-1810.29	1742.27	40.4801318	-104.5799945	0.00	



Planned Wellpath Report
Foose State A17-618 (REV-A.0) PWP
Page 4 of 7



REFERENCE WELLPATH IDENTIFICATION			
Operator	NOBLE ENERGY, INC	Well	Foose State A17-618
Field	WELD COUNTY (NOBLE NAD 83 GRID)	API/Legal	
Facility	SEC.18-T06N-R64W	Wellbore	Foose State A17-618 PWB
Slot	SLOT#08 Foose State A17-618 (2347'FSL & 687'FEL,SEC.18)		

WELLPATH DATA (186 stations) † = interpolated, ‡ = extrapolated station										
MD [ft]	Inclination [°]	Azimuth [°]	TVD [ft]	Vert Sect [ft]	North [ft]	East [ft]	Latitude	Longitude	DLS [°/100ft]	Comments
8530.00†	90.000	89.366	6860.00	2098.09	-1809.18	1842.26	40.4801320	-104.5796351	0.00	
8630.00†	90.000	89.366	6860.00	2196.73	-1808.07	1942.26	40.4801322	-104.5792756	0.00	
8730.00†	90.000	89.366	6860.00	2295.37	-1806.97	2042.25	40.4801324	-104.5789162	0.00	
8830.00†	90.000	89.366	6860.00	2394.01	-1805.86	2142.24	40.4801326	-104.5785567	0.00	
8930.00†	90.000	89.366	6860.00	2492.65	-1804.76	2242.24	40.4801328	-104.5781972	0.00	
9030.00†	90.000	89.366	6860.00	2591.29	-1803.65	2342.23	40.4801329	-104.5778378	0.00	
9130.00†	90.000	89.366	6860.00	2689.93	-1802.54	2442.23	40.4801331	-104.5774783	0.00	
9230.00†	90.000	89.366	6860.00	2788.57	-1801.44	2542.22	40.4801333	-104.5771188	0.00	
9330.00†	90.000	89.366	6860.00	2887.21	-1800.33	2642.21	40.4801335	-104.5767594	0.00	
9430.00†	90.000	89.366	6860.00	2985.85	-1799.23	2742.21	40.4801337	-104.5763999	0.00	
9530.00†	90.000	89.366	6860.00	3084.49	-1798.12	2842.20	40.4801338	-104.5760404	0.00	
9630.00†	90.000	89.366	6860.00	3183.13	-1797.01	2942.20	40.4801340	-104.5756810	0.00	
9730.00†	90.000	89.366	6860.00	3281.77	-1795.91	3042.19	40.4801342	-104.5753215	0.00	
9830.00†	90.000	89.366	6860.00	3380.41	-1794.80	3142.18	40.4801344	-104.5749620	0.00	
9930.00†	90.000	89.366	6860.00	3479.05	-1793.70	3242.18	40.4801345	-104.5746026	0.00	
10030.00†	90.000	89.366	6860.00	3577.69	-1792.59	3342.17	40.4801347	-104.5742431	0.00	
10130.00†	90.000	89.366	6860.00	3676.33	-1791.48	3442.16	40.4801349	-104.5738836	0.00	
10230.00†	90.000	89.366	6860.00	3774.97	-1790.38	3542.16	40.4801350	-104.5735242	0.00	
10330.00†	90.000	89.366	6860.00	3873.61	-1789.27	3642.15	40.4801352	-104.5731647	0.00	
10430.00†	90.000	89.366	6860.00	3972.25	-1788.17	3742.15	40.4801354	-104.5728053	0.00	
10530.00†	90.000	89.366	6860.00	4070.89	-1787.06	3842.14	40.4801355	-104.5724458	0.00	
10630.00†	90.000	89.366	6860.00	4169.52	-1785.95	3942.13	40.4801357	-104.5720863	0.00	
10730.00†	90.000	89.366	6860.00	4268.16	-1784.85	4042.13	40.4801359	-104.5717269	0.00	
10830.00†	90.000	89.366	6860.00	4366.80	-1783.74	4142.12	40.4801360	-104.5713674	0.00	
10930.00†	90.000	89.366	6860.00	4465.44	-1782.63	4242.12	40.4801362	-104.5710079	0.00	
11030.00†	90.000	89.366	6860.00	4564.08	-1781.53	4342.11	40.4801364	-104.5706485	0.00	
11130.00†	90.000	89.366	6860.00	4662.72	-1780.42	4442.10	40.4801365	-104.5702890	0.00	
11230.00†	90.000	89.366	6860.00	4761.36	-1779.32	4542.10	40.4801367	-104.5699295	0.00	
11330.00†	90.000	89.366	6860.00	4860.00	-1778.21	4642.09	40.4801368	-104.5695701	0.00	
11430.00†	90.000	89.366	6860.00	4958.64	-1777.10	4742.09	40.4801370	-104.5692106	0.00	
11530.00†	90.000	89.366	6860.00	5057.28	-1776.00	4842.08	40.4801371	-104.5688511	0.00	
11630.00†	90.000	89.366	6860.00	5155.92	-1774.89	4942.07	40.4801373	-104.5684917	0.00	
11730.00†	90.000	89.366	6860.00	5254.56	-1773.79	5042.07	40.4801374	-104.5681322	0.00	
11830.00†	90.000	89.366	6860.00	5353.20	-1772.68	5142.06	40.4801376	-104.5677727	0.00	
11930.00†	90.000	89.366	6860.00	5451.84	-1771.57	5242.05	40.4801377	-104.5674133	0.00	
12030.00†	90.000	89.366	6860.00	5550.48	-1770.47	5342.05	40.4801379	-104.5670538	0.00	
12130.00†	90.000	89.366	6860.00	5649.12	-1769.36	5442.04	40.4801380	-104.5666944	0.00	
12230.00†	90.000	89.366	6860.00	5747.76	-1768.26	5542.04	40.4801382	-104.5663349	0.00	
12330.00†	90.000	89.366	6860.00	5846.40	-1767.15	5642.03	40.4801383	-104.5659754	0.00	
12430.00†	90.000	89.366	6860.00	5945.04	-1766.04	5742.02	40.4801385	-104.5656160	0.00	
12530.00†	90.000	89.366	6860.00	6043.68	-1764.94	5842.02	40.4801386	-104.5652565	0.00	
12630.00†	90.000	89.366	6860.00	6142.32	-1763.83	5942.01	40.4801388	-104.5648970	0.00	
12717.92	90.000	89.366	6860.00 ²	6229.04	-1762.86	6029.93	40.4801389	-104.5645810	0.00	IP 1
12726.27	90.000	89.533	6860.00	6237.28	-1762.78	6038.28	40.4801389	-104.5645510	2.00	3D Arc (J)
12730.00†	90.000	89.533	6860.00	6240.96	-1762.75	6042.01	40.4801388	-104.5645376	0.00	



Planned Wellpath Report
Foose State A17-618 (REV-A.0) PWP
Page 5 of 7



REFERENCE WELLPATH IDENTIFICATION			
Operator	NOBLE ENERGY, INC	Well	Foose State A17-618
Field	WELD COUNTY (NOBLE NAD 83 GRID)	API/Legal	
Facility	SEC.18-T06N-R64W	Wellbore	Foose State A17-618 PWB
Slot	SLOT#08 Foose State A17-618 (2347'FSL & 687'FEL,SEC.18)		

WELLPATH DATA (186 stations) † = interpolated, ‡ = extrapolated station										
MD [ft]	Inclination [°]	Azimuth [°]	TVD [ft]	Vert Sect [ft]	North [ft]	East [ft]	Latitude	Longitude	DLS [°/100ft]	Comments
12830.00†	90.000	89.533	6860.00	6339.65	-1761.93	6142.00	40.4801382	-104.5641781	0.00	
12930.00†	90.000	89.533	6860.00	6438.33	-1761.12	6242.00	40.4801375	-104.5638186	0.00	
13030.00†	90.000	89.533	6860.00	6537.02	-1760.31	6342.00	40.4801369	-104.5634592	0.00	
13130.00†	90.000	89.533	6860.00	6635.71	-1759.49	6441.99	40.4801362	-104.5630997	0.00	
13230.00†	90.000	89.533	6860.00	6734.39	-1758.68	6541.99	40.4801355	-104.5627402	0.00	
13330.00†	90.000	89.533	6860.00	6833.08	-1757.86	6641.99	40.4801349	-104.5623808	0.00	
13430.00†	90.000	89.533	6860.00	6931.77	-1757.05	6741.98	40.4801342	-104.5620213	0.00	
13530.00†	90.000	89.533	6860.00	7030.45	-1756.23	6841.98	40.4801335	-104.5616619	0.00	
13630.00†	90.000	89.533	6860.00	7129.14	-1755.42	6941.98	40.4801329	-104.5613024	0.00	
13730.00†	90.000	89.533	6860.00	7227.83	-1754.60	7041.97	40.4801322	-104.5609429	0.00	
13830.00†	90.000	89.533	6860.00	7326.52	-1753.79	7141.97	40.4801315	-104.5605835	0.00	
13930.00†	90.000	89.533	6860.00	7425.20	-1752.97	7241.97	40.4801308	-104.5602240	0.00	
14030.00†	90.000	89.533	6860.00	7523.89	-1752.16	7341.96	40.4801302	-104.5598645	0.00	
14130.00†	90.000	89.533	6860.00	7622.58	-1751.35	7441.96	40.4801295	-104.5595051	0.00	
14230.00†	90.000	89.533	6860.00	7721.26	-1750.53	7541.96	40.4801288	-104.5591456	0.00	
14330.00†	90.000	89.533	6860.00	7819.95	-1749.72	7641.95	40.4801281	-104.5587861	0.00	
14430.00†	90.000	89.533	6860.00	7918.64	-1748.90	7741.95	40.4801275	-104.5584267	0.00	
14530.00†	90.000	89.533	6860.00	8017.32	-1748.09	7841.95	40.4801268	-104.5580672	0.00	
14630.00†	90.000	89.533	6860.00	8116.01	-1747.27	7941.94	40.4801261	-104.5577078	0.00	
14730.00†	90.000	89.533	6860.00	8214.70	-1746.46	8041.94	40.4801254	-104.5573483	0.00	
14830.00†	90.000	89.533	6860.00	8313.39	-1745.64	8141.94	40.4801247	-104.5569888	0.00	
14930.00†	90.000	89.533	6860.00	8412.07	-1744.83	8241.93	40.4801241	-104.5566294	0.00	
15030.00†	90.000	89.533	6860.00	8510.76	-1744.01	8341.93	40.4801234	-104.5562699	0.00	
15130.00†	90.000	89.533	6860.00	8609.45	-1743.20	8441.93	40.4801227	-104.5559104	0.00	
15230.00†	90.000	89.533	6860.00	8708.13	-1742.38	8541.92	40.4801220	-104.5555510	0.00	
15330.00†	90.000	89.533	6860.00	8806.82	-1741.57	8641.92	40.4801213	-104.5551915	0.00	
15430.00†	90.000	89.533	6860.00	8905.51	-1740.76	8741.92	40.4801206	-104.5548320	0.00	
15530.00†	90.000	89.533	6860.00	9004.19	-1739.94	8841.91	40.4801199	-104.5544726	0.00	
15630.00†	90.000	89.533	6860.00	9102.88	-1739.13	8941.91	40.4801192	-104.5541131	0.00	
15730.00†	90.000	89.533	6860.00	9201.57	-1738.31	9041.91	40.4801185	-104.5537537	0.00	
15830.00†	90.000	89.533	6860.00	9300.26	-1737.50	9141.90	40.4801178	-104.5533942	0.00	
15930.00†	90.000	89.533	6860.00	9398.94	-1736.68	9241.90	40.4801172	-104.5530347	0.00	
16030.00†	90.000	89.533	6860.00	9497.63	-1735.87	9341.90	40.4801165	-104.5526753	0.00	
16130.00†	90.000	89.533	6860.00	9596.32	-1735.05	9441.89	40.4801158	-104.5523158	0.00	
16230.00†	90.000	89.533	6860.00	9695.00	-1734.24	9541.89	40.4801151	-104.5519563	0.00	
16330.00†	90.000	89.533	6860.00	9793.69	-1733.42	9641.89	40.4801144	-104.5515969	0.00	
16430.00†	90.000	89.533	6860.00	9892.38	-1732.61	9741.88	40.4801137	-104.5512374	0.00	
16530.00†	90.000	89.533	6860.00	9991.06	-1731.80	9841.88	40.4801130	-104.5508779	0.00	
16630.00†	90.000	89.533	6860.00	10089.75	-1730.98	9941.88	40.4801123	-104.5505185	0.00	
16730.00†	90.000	89.533	6860.00	10188.44	-1730.17	10041.87	40.4801116	-104.5501590	0.00	
16830.00†	90.000	89.533	6860.00	10287.13	-1729.35	10141.87	40.4801109	-104.5497996	0.00	
16930.00†	90.000	89.533	6860.00	10385.81	-1728.54	10241.87	40.4801101	-104.5494401	0.00	
17030.00†	90.000	89.533	6860.00	10484.50	-1727.72	10341.86	40.4801094	-104.5490806	0.00	
17130.00†	90.000	89.533	6860.00	10583.19	-1726.91	10441.86	40.4801087	-104.5487212	0.00	
17230.00†	90.000	89.533	6860.00	10681.87	-1726.09	10541.86	40.4801080	-104.5483617	0.00	



Planned Wellpath Report

Foose State A17-618 (REV-A.0) PWP

Page 6 of 7



REFERENCE WELLPATH IDENTIFICATION			
Operator	NOBLE ENERGY, INC	Well	Foose State A17-618
Field	WELD COUNTY (NOBLE NAD 83 GRID)	API/Legal	
Facility	SEC.18-T06N-R64W	Wellbore	Foose State A17-618 PWB
Slot	SLOT#08 Foose State A17-618 (2347'FSL & 687'FEL,SEC.18)		

WELLPATH DATA (186 stations) † = interpolated, ‡ = extrapolated station										
MD [ft]	Inclination [°]	Azimuth [°]	TVD [ft]	Vert Sect [ft]	North [ft]	East [ft]	Latitude	Longitude	DLS [°/100ft]	Comments
17330.00†	90.000	89.533	6860.00	10780.56	-1725.28	10641.85	40.4801073	-104.5480022	0.00	
17430.00†	90.000	89.533	6860.00	10879.25	-1724.46	10741.85	40.4801066	-104.5476428	0.00	
17530.00†	90.000	89.533	6860.00	10977.94	-1723.65	10841.85	40.4801059	-104.5472833	0.00	
17630.00†	90.000	89.533	6860.00	11076.62	-1722.83	10941.84	40.4801052	-104.5469239	0.00	
17730.00†	90.000	89.533	6860.00	11175.31	-1722.02	11041.84	40.4801045	-104.5465644	0.00	
17773.41	90.000	89.533	6860.00 ³	11218.15	-1721.67	11085.25	40.4801041	-104.5464083	0.00	BHL

HOLE & CASING SECTIONS - Ref Wellbore: Foose State A17-618 PWB Ref Wellpath: Foose State A17-618 (REV-A.0) PWP									
String/Diameter	Start MD [ft]	End MD [ft]	Interval [ft]	Start TVD [ft]	End TVD [ft]	Start N/S [ft]	Start E/W [ft]	End N/S [ft]	End E/W [ft]
9.625in Casing Surface	30.00	1950.00	1920.00	30.00	1950.00	0.00	0.00	0.00	0.00

TARGETS									
Name	MD [ft]	TVD [ft]	North [ft]	East [ft]	Grid East [US ft]	Grid North [US ft]	Latitude	Longitude	Shape
OGDP 1 SEC.16-T06N-R64W	N/A	-37.00	7372.61	199.34	3254380.72	1428262.61	40.5053800	-104.5852000	polygon
	2D Polygon: dimensions not calculated								
OGDP 1 SEC.17-T06N-R64W	N/A	-37.00	7372.61	199.34	3254380.72	1428262.61	40.5053800	-104.5852000	polygon
	2D Polygon: dimensions not calculated								
OGDP 1 SEC.18-T06N-R64W	N/A	-37.00	7372.61	199.34	3254380.72	1428262.61	40.5053800	-104.5852000	polygon
	2D Polygon: dimensions not calculated								
3) Foose State A17-618 BHL Rev-1 (510'FSL & 200'FEL,SEC.16)	17773.41	6860.00	-1721.67	11085.25	3265266.23	1419168.67	40.4801041	-104.5464083	point
2) Foose State A17-618 IP1	12717.92	6860.00	-1762.86	6029.93	3260211.09	1419127.48	40.4801389	-104.5645810	point
1) Foose State A17-618 LP Rev-1 (510'FSL & 200'FWL,SEC.17)	7590.00	6860.00	-1819.58	902.32	3255083.67	1419070.76	40.4801302	-104.5830140	point

SURVEY PROGRAM - Ref Wellbore: Foose State A17-618 PWB Ref Wellpath: Foose State A17-618 (REV-A.0) PWP				
Start MD [ft]	End MD [ft]	Positional Uncertainty Model	Log Name/Comment	Wellbore
30.00	17773.41	OWSG MWD rev2 (MS+IFR1)		Foose State A17-618 PWB



Planned Wellpath Report

Foose State A17-618 (REV-A.0) PWP

Page 7 of 7



REFERENCE WELLPATH IDENTIFICATION			
Operator	NOBLE ENERGY, INC	Well	Foose State A17-618
Field	WELD COUNTY (NOBLE NAD 83 GRID)	API/Legal	
Facility	SEC.18-T06N-R64W	Wellbore	Foose State A17-618 PWB
Slot	SLOT#08 Foose State A17-618 (2347'FSL & 687'FEL,SEC.18)		

DESIGN COMMENTS				
MD [ft]	Inclination [°]	Azimuth [°]	TVD [ft]	Comment
30.00	0.000	170.567	30.00	SHL
2000.00	0.000	170.567	2000.00	End of Tangent
3173.15	23.463	170.567	3140.63	Build (XS)
6628.80	23.463	170.567	6310.57	KOP
7590.00	90.000	89.366	6860.00	LP/TPZ
12717.92	90.000	89.366	6860.00	IP 1
12726.27	90.000	89.533	6860.00	3D Arc (J)
17773.41	90.000	89.533	6860.00	BHL