

# NOBLE ENERGY, INC

Location: COLORADO Slot: SLOT#05 Foose State A17-647 (2349'FSL & 799'FEL, SEC.18)  
 Field: WELD COUNTY (NOBLE NAD 83 GRID) Well: Foose State A17-647  
 Facility: SEC.18-T06N-R64W Wellbore: Foose State A17-647 PWB

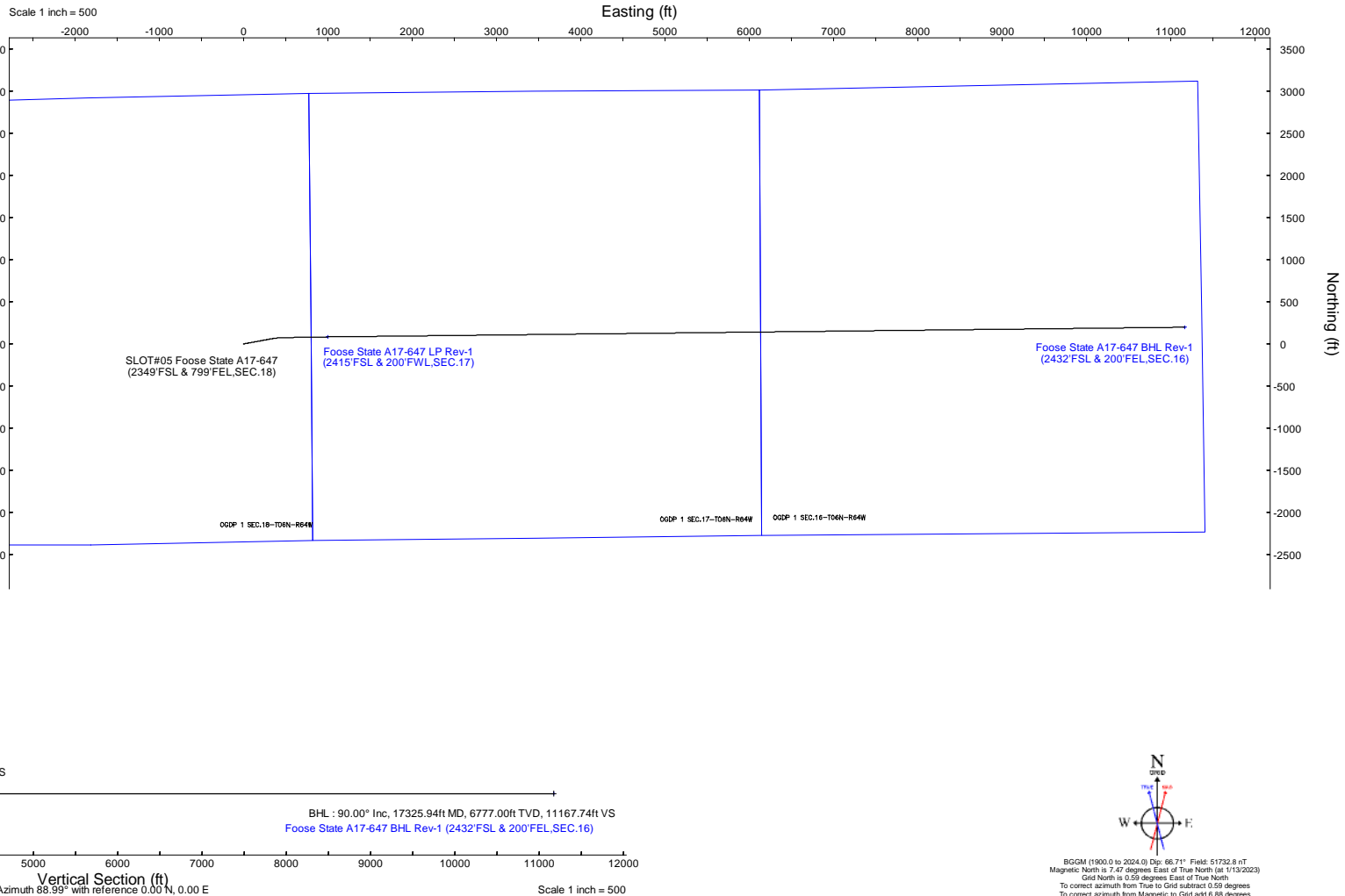
Plot reference wellpath is Foose State A17-647 (REV-A.0) PWP  
 True vertical depths are referenced to (4704'GL+30'KB@4734'RKB) (RKB)  
 Reference wellpath measured depths are referenced to (4704'GL+30'KB@4734'RKB) (RKB)  
 (4704'GL+30'KB@4734'RKB) (RKB) to Mean Sea Level: 4734 feet  
 Mean Sea Level to Ground level (At Slot: SLOT#05 Foose State A17-647 (2349'FSL & 799'FEL, SEC.18)): 0 feet  
 Offset wellpath MDs are referenced to each path's default MD datum

Location Information						
Facility Name		Grid East (US ft)	Grid North (US ft)	Latitude	Longitude	
SEC.18-T06N-R64W		3253919.866	1420891.224	40°29'5.5760"N	104°35'13.6680"W	
Slot	Local N (ft)	Local E (ft)	Grid East (US ft)	Grid North (US ft)	Latitude	Longitude
SLOT#05 Foose State A17-647 (2349'FSL & 799'FEL, SEC.18)	1.55	150.20	3254070.085	1420892.771	40°29'5.5760"N	104°35'11.7240"W
(4704'GL+30'KB@4734'RKB) (RKB) to Ground level (At Slot: SLOT#05 Foose State A17-647 (2349'FSL & 799'FEL, SEC.18))		4734ft				
Mean Sea Level to Ground level (At Slot: SLOT#05 Foose State A17-647 (2349'FSL & 799'FEL, SEC.18))		0ft				
(4704'GL+30'KB@4734'RKB) (RKB) to Mean Sea Level		4734ft				

Well Profile Data								
Design Comment	MD (ft)	Inc (°)	Az (°)	TVD (ft)	Local N (ft)	Local E (ft)	DLS (°/100ft)	VS (ft)
SHL	30.00	0.000	79.602	30.00	0.00	0.00	0.00	0.00
End of Tangent	2000.00	0.000	79.602	2000.00	0.00	0.00	0.00	0.00
Build (XS)	2259.76	5.195	79.602	2259.40	2.12	11.58	2.00	11.61
KOP	6213.86	5.195	79.602	6197.26	66.75	363.73	0.00	364.86
LP/TPZ	7156.97	90.000	89.353	6777.00	82.84	997.67	9.00	998.98
BHL	17325.94	90.000	89.353	6777.00	197.73	11165.99	0.00	11167.74

Targets								
Name	MD (ft)	TVD (ft)	Local N (ft)	Local E (ft)	Grid East (US ft)	Grid North (US ft)	Latitude	Longitude
OGDP 1 SEC.16-T06N-R64W	N/A	-38.00	7370.11	310.64	3254380.72	1428262.61	40°30'19.3680"N	104°35'5.7200"W
OGDP 1 SEC.17-T06N-R64W	N/A	-38.00	7370.11	310.64	3254380.72	1428262.61	40°30'19.3680"N	104°35'5.7200"W
OGDP 1 SEC.18-T06N-R64W	N/A	-38.00	7370.11	310.64	3254380.72	1428262.61	40°30'19.3680"N	104°35'5.7200"W
Foose State A17-647 BHL Rev1 (2432'FSL & 200'FEL, SEC.16)	17325.94	6777.00	197.73	11165.99	3265235.67	1421090.49	40°29'7.3682"N	104°32'47.1980"W
Foose State A17-647 LP Rev1 (2415'FSL & 200'FWL, SEC.17)	7156.97	6777.00	82.84	997.67	3255067.72	1420975.60	40°29'7.2928"N	104°34'58.8021"W

Survey Program					
Start MD (ft)	End MD (ft)	Tool	Model	Log Name/Comment	Wellbore
30.00	17325.94	OWSG MWD rev2	OWSG MWD rev2 (MS+IFR1)		Foose State A17-647 PWB



BGGM (1900.0 to 2024.0) Dip: 66.71° Field: 51732.8 nT  
 Magnetic North is 7.47 degrees East of True North (at 1/13/2023)  
 Grid North is 0.59 degrees East of True North  
 To correct azimuth from True to Grid subtract 0.59 degrees  
 To correct azimuth from Magnetic to Grid add 6.88 degrees



# Planned Wellpath Report

Foose State A17-647 (REV-A.0) PWP

Page 1 of 7



## REFERENCE WELLPATH IDENTIFICATION

Operator	NOBLE ENERGY, INC	Well	Foose State A17-647
Field	WELD COUNTY (NOBLE NAD 83 GRID)	API/Legal	
Facility	SEC.18-T06N-R64W	Wellbore	Foose State A17-647 PWB
Slot	SLOT#05 Foose State A17-647 (2349'FSL & 799'FEL,SEC.18)		

## REPORT SETUP INFORMATION

Projection System	NAD83 / Lambert Colorado SP, Northern Zone (501), US feet	Software System	WellArchitect® 6.0
North Reference	Grid	User	Guenaler
Scale	0.999965	Report Generated	1/13/2023 at 6:07:50 PM
Convergence at slot	0.59° East	Database	WA_Denver

## WELLPATH LOCATION

	Local coordinates		Grid coordinates		Geographic coordinates	
	North[ft]	East[ft]	Easting[US ft]	Northing[US ft]	Latitude	Longitude
Slot Location	1.55	150.20	3254070.09	1420892.77	40.4851600°	-104.5865900°
Facility Reference Pt			3253919.89	1420891.22	40.4851600°	-104.5871300°
Field Reference Pt			3000000.00	4454105.15	48.7761986°	-105.5000000°

## WELLPATH DATUM

Calculation method	Minimum curvature	(4704'GL+30'KB@4734'RKB) (RKB) to Facility Vertical Datum	4734.00ft
Horizontal Reference Pt	Slot	(4704'GL+30'KB@4734'RKB) (RKB) to Mean Sea Level	4734.00ft
Vertical Reference Pt	(4704'GL+30'KB@4734'RKB) (RKB)	(4704'GL+30'KB@4734'RKB) (RKB) to Ground Level at Slot (SLOT#05 Foose State A17-647 (2349'FSL & 799'FEL,SEC.18))	4734.00ft
MD Reference Pt	(4704'GL+30'KB@4734'RKB) (RKB)	Section Origin	N 0.00, E 0.00 ft
Field Vertical Reference	Mean Sea Level	Section Azimuth	88.99°



# Planned Wellpath Report

Foose State A17-647 (REV-A.0) PWP

Page 2 of 7



REFERENCE WELLPATH IDENTIFICATION			
Operator	NOBLE ENERGY, INC	Well	Foose State A17-647
Field	WELD COUNTY (NOBLE NAD 83 GRID)	API/Legal	
Facility	SEC.18-T06N-R64W	Wellbore	Foose State A17-647 PWB
Slot	SLOT#05 Foose State A17-647 (2349'FSL & 799'FEL,SEC.18)		

WELLPATH DATA (179 stations) † = interpolated, ‡ = extrapolated station										
MD [ft]	Inclination [°]	Azimuth [°]	TVD [ft]	Vert Sect [ft]	North [ft]	East [ft]	Latitude	Longitude	DLS [°/100ft]	Comments
0.00†	0.000	79.602	0.00	0.00	0.00	0.00	40.4851600	-104.5865900	0.00	
30.00	0.000	79.602	30.00	0.00	0.00	0.00	40.4851600	-104.5865900	0.00	SHL
130.00†	0.000	79.602	130.00	0.00	0.00	0.00	40.4851600	-104.5865900	0.00	
230.00†	0.000	79.602	230.00	0.00	0.00	0.00	40.4851600	-104.5865900	0.00	
330.00†	0.000	79.602	330.00	0.00	0.00	0.00	40.4851600	-104.5865900	0.00	
430.00†	0.000	79.602	430.00	0.00	0.00	0.00	40.4851600	-104.5865900	0.00	
530.00†	0.000	79.602	530.00	0.00	0.00	0.00	40.4851600	-104.5865900	0.00	
630.00†	0.000	79.602	630.00	0.00	0.00	0.00	40.4851600	-104.5865900	0.00	
730.00†	0.000	79.602	730.00	0.00	0.00	0.00	40.4851600	-104.5865900	0.00	
830.00†	0.000	79.602	830.00	0.00	0.00	0.00	40.4851600	-104.5865900	0.00	
930.00†	0.000	79.602	930.00	0.00	0.00	0.00	40.4851600	-104.5865900	0.00	
1030.00†	0.000	79.602	1030.00	0.00	0.00	0.00	40.4851600	-104.5865900	0.00	
1130.00†	0.000	79.602	1130.00	0.00	0.00	0.00	40.4851600	-104.5865900	0.00	
1230.00†	0.000	79.602	1230.00	0.00	0.00	0.00	40.4851600	-104.5865900	0.00	
1330.00†	0.000	79.602	1330.00	0.00	0.00	0.00	40.4851600	-104.5865900	0.00	
1430.00†	0.000	79.602	1430.00	0.00	0.00	0.00	40.4851600	-104.5865900	0.00	
1530.00†	0.000	79.602	1530.00	0.00	0.00	0.00	40.4851600	-104.5865900	0.00	
1630.00†	0.000	79.602	1630.00	0.00	0.00	0.00	40.4851600	-104.5865900	0.00	
1730.00†	0.000	79.602	1730.00	0.00	0.00	0.00	40.4851600	-104.5865900	0.00	
1830.00†	0.000	79.602	1830.00	0.00	0.00	0.00	40.4851600	-104.5865900	0.00	
1930.00†	0.000	79.602	1930.00	0.00	0.00	0.00	40.4851600	-104.5865900	0.00	
2000.00	0.000	79.602	2000.00	0.00	0.00	0.00	40.4851600	-104.5865900	0.00	End of Tangent
2030.00†	0.600	79.602	2030.00	0.15	0.03	0.15	40.4851601	-104.5865894	2.00	
2130.00†	2.600	79.602	2129.96	2.91	0.53	2.90	40.4851614	-104.5865796	2.00	
2230.00†	4.600	79.602	2229.75	9.10	1.67	9.08	40.4851643	-104.5865573	2.00	
2259.76	5.195	79.602	2259.40	11.61	2.12	11.58	40.4851655	-104.5865483	2.00	Build (XS)
2330.00†	5.195	79.602	2329.36	17.89	3.27	17.83	40.4851685	-104.5865258	0.00	
2430.00†	5.195	79.602	2428.94	26.82	4.91	26.74	40.4851727	-104.5864937	0.00	
2530.00†	5.195	79.602	2528.53	35.75	6.54	35.64	40.4851769	-104.5864616	0.00	
2630.00†	5.195	79.602	2628.12	44.69	8.17	44.55	40.4851812	-104.5864296	0.00	
2730.00†	5.195	79.602	2727.71	53.62	9.81	53.46	40.4851854	-104.5863975	0.00	
2830.00†	5.195	79.602	2827.30	62.55	11.44	62.36	40.4851896	-104.5863654	0.00	
2930.00†	5.195	79.602	2926.89	71.49	13.08	71.27	40.4851939	-104.5863333	0.00	
3030.00†	5.195	79.602	3026.48	80.42	14.71	80.17	40.4851981	-104.5863013	0.00	
3130.00†	5.195	79.602	3126.07	89.36	16.35	89.08	40.4852023	-104.5862692	0.00	
3230.00†	5.195	79.602	3225.66	98.29	17.98	97.99	40.4852066	-104.5862371	0.00	
3330.00†	5.195	79.602	3325.25	107.22	19.62	106.89	40.4852108	-104.5862050	0.00	
3430.00†	5.195	79.602	3424.84	116.16	21.25	115.80	40.4852150	-104.5861729	0.00	
3530.00†	5.195	79.602	3524.43	125.09	22.88	124.70	40.4852193	-104.5861409	0.00	
3630.00†	5.195	79.602	3624.02	134.02	24.52	133.61	40.4852235	-104.5861088	0.00	
3730.00†	5.195	79.602	3723.60	142.96	26.15	142.52	40.4852278	-104.5860767	0.00	
3830.00†	5.195	79.602	3823.19	151.89	27.79	151.42	40.4852320	-104.5860446	0.00	
3930.00†	5.195	79.602	3922.78	160.82	29.42	160.33	40.4852362	-104.5860126	0.00	
4030.00†	5.195	79.602	4022.37	169.76	31.06	169.24	40.4852405	-104.5859805	0.00	
4130.00†	5.195	79.602	4121.96	178.69	32.69	178.14	40.4852447	-104.5859484	0.00	



# Planned Wellpath Report

Foose State A17-647 (REV-A.0) PWP

Page 3 of 7



## REFERENCE WELLPATH IDENTIFICATION

Operator	NOBLE ENERGY, INC	Well	Foose State A17-647
Field	WELD COUNTY (NOBLE NAD 83 GRID)	API/Legal	
Facility	SEC.18-T06N-R64W	Wellbore	Foose State A17-647 PWB
Slot	SLOT#05 Foose State A17-647 (2349'FSL & 799'FEL,SEC.18)		

## WELLPATH DATA (179 stations) † = interpolated, ‡ = extrapolated station

MD [ft]	Inclination [°]	Azimuth [°]	TVD [ft]	Vert Sect [ft]	North [ft]	East [ft]	Latitude	Longitude	DLS [°/100ft]	Comments
4230.00†	5.195	79.602	4221.55	187.63	34.32	187.05	40.4852489	-104.5859163	0.00	
4330.00†	5.195	79.602	4321.14	196.56	35.96	195.95	40.4852532	-104.5858843	0.00	
4430.00†	5.195	79.602	4420.73	205.49	37.59	204.86	40.4852574	-104.5858522	0.00	
4530.00†	5.195	79.602	4520.32	214.43	39.23	213.77	40.4852616	-104.5858201	0.00	
4630.00†	5.195	79.602	4619.91	223.36	40.86	222.67	40.4852659	-104.5857880	0.00	
4730.00†	5.195	79.602	4719.50	232.29	42.50	231.58	40.4852701	-104.5857560	0.00	
4830.00†	5.195	79.602	4819.09	241.23	44.13	240.48	40.4852743	-104.5857239	0.00	
4930.00†	5.195	79.602	4918.68	250.16	45.76	249.39	40.4852786	-104.5856918	0.00	
5030.00†	5.195	79.602	5018.26	259.09	47.40	258.30	40.4852828	-104.5856597	0.00	
5130.00†	5.195	79.602	5117.85	268.03	49.03	267.20	40.4852870	-104.5856277	0.00	
5230.00†	5.195	79.602	5217.44	276.96	50.67	276.11	40.4852913	-104.5855956	0.00	
5330.00†	5.195	79.602	5317.03	285.90	52.30	285.01	40.4852955	-104.5855635	0.00	
5430.00†	5.195	79.602	5416.62	294.83	53.94	293.92	40.4852997	-104.5855314	0.00	
5530.00†	5.195	79.602	5516.21	303.76	55.57	302.83	40.4853040	-104.5854994	0.00	
5630.00†	5.195	79.602	5615.80	312.70	57.20	311.73	40.4853082	-104.5854673	0.00	
5730.00†	5.195	79.602	5715.39	321.63	58.84	320.64	40.4853124	-104.5854352	0.00	
5830.00†	5.195	79.602	5814.98	330.56	60.47	329.55	40.4853167	-104.5854031	0.00	
5930.00†	5.195	79.602	5914.57	339.50	62.11	338.45	40.4853209	-104.5853711	0.00	
6030.00†	5.195	79.602	6014.16	348.43	63.74	347.36	40.4853251	-104.5853390	0.00	
6130.00†	5.195	79.602	6113.75	357.37	65.38	356.26	40.4853294	-104.5853069	0.00	
6213.86	5.195	79.602	6197.26	364.86	66.75	363.73	40.4853329	-104.5852800	0.00	KOP
6230.00†	6.631	81.741	6213.31	366.50	67.01	365.37	40.4853336	-104.5852741	9.00	
6330.00†	15.597	86.190	6311.34	385.70	68.74	384.54	40.4853378	-104.5852051	9.00	
6430.00†	24.587	87.424	6405.16	419.99	70.57	418.81	40.4853418	-104.5850819	9.00	
6530.00†	33.583	88.024	6492.46	468.54	72.46	467.33	40.4853457	-104.5849074	9.00	
6630.00†	42.580	88.392	6571.09	530.15	74.37	528.92	40.4853492	-104.5846859	9.00	
6730.00†	51.578	88.653	6639.12	603.30	76.24	602.05	40.4853522	-104.5844230	9.00	
6830.00†	60.576	88.855	6694.87	686.19	78.04	684.92	40.4853548	-104.5841250	9.00	
6930.00†	69.575	89.024	6736.97	776.79	79.71	775.50	40.4853568	-104.5837993	9.00	
7030.00†	78.574	89.174	6764.38	872.85	81.22	871.55	40.4853582	-104.5834540	9.00	
7130.00†	87.573	89.315	6776.43	972.02	82.52	970.71	40.4853590	-104.5830975	9.00	
7156.97	90.000	89.353	6777.00†	998.98	82.84	997.67	40.4853591	-104.5830006	9.00	LP/TPZ
7230.00†	90.000	89.353	6777.00	1072.01	83.66	1070.69	40.4853593	-104.5827380	0.00	
7330.00†	90.000	89.353	6777.00	1172.01	84.79	1170.69	40.4853596	-104.5823786	0.00	
7430.00†	90.000	89.353	6777.00	1272.00	85.92	1270.68	40.4853598	-104.5820191	0.00	
7530.00†	90.000	89.353	6777.00	1372.00	87.05	1370.67	40.4853601	-104.5816596	0.00	
7630.00†	90.000	89.353	6777.00	1472.00	88.18	1470.67	40.4853603	-104.5813001	0.00	
7730.00†	90.000	89.353	6777.00	1572.00	89.31	1570.66	40.4853606	-104.5809406	0.00	
7830.00†	90.000	89.353	6777.00	1671.99	90.44	1670.66	40.4853608	-104.5805811	0.00	
7930.00†	90.000	89.353	6777.00	1771.99	91.57	1770.65	40.4853611	-104.5802216	0.00	
8030.00†	90.000	89.353	6777.00	1871.99	92.70	1870.64	40.4853614	-104.5798621	0.00	
8130.00†	90.000	89.353	6777.00	1971.99	93.83	1970.64	40.4853616	-104.5795026	0.00	
8230.00†	90.000	89.353	6777.00	2071.99	94.96	2070.63	40.4853619	-104.5791431	0.00	
8330.00†	90.000	89.353	6777.00	2171.98	96.09	2170.62	40.4853621	-104.5787836	0.00	
8430.00†	90.000	89.353	6777.00	2271.98	97.22	2270.62	40.4853624	-104.5784241	0.00	



# Planned Wellpath Report

Foose State A17-647 (REV-A.0) PWP  
Page 4 of 7



REFERENCE WELLPATH IDENTIFICATION			
Operator	NOBLE ENERGY, INC	Well	Foose State A17-647
Field	WELD COUNTY (NOBLE NAD 83 GRID)	API/Legal	
Facility	SEC.18-T06N-R64W	Wellbore	Foose State A17-647 PWB
Slot	SLOT#05 Foose State A17-647 (2349'FSL & 799'FEL,SEC.18)		

WELLPATH DATA (179 stations) † = interpolated, ‡ = extrapolated station										
MD [ft]	Inclination [°]	Azimuth [°]	TVD [ft]	Vert Sect [ft]	North [ft]	East [ft]	Latitude	Longitude	DLS [°/100ft]	Comments
8530.00†	90.000	89.353	6777.00	2371.98	98.35	2370.61	40.4853626	-104.5780646	0.00	
8630.00†	90.000	89.353	6777.00	2471.98	99.48	2470.60	40.4853629	-104.5777051	0.00	
8730.00†	90.000	89.353	6777.00	2571.98	100.61	2570.60	40.4853631	-104.5773457	0.00	
8830.00†	90.000	89.353	6777.00	2671.97	101.74	2670.59	40.4853633	-104.5769862	0.00	
8930.00†	90.000	89.353	6777.00	2771.97	102.87	2770.59	40.4853636	-104.5766267	0.00	
9030.00†	90.000	89.353	6777.00	2871.97	104.00	2870.58	40.4853638	-104.5762672	0.00	
9130.00†	90.000	89.353	6777.00	2971.97	105.13	2970.57	40.4853641	-104.5759077	0.00	
9230.00†	90.000	89.353	6777.00	3071.97	106.26	3070.57	40.4853643	-104.5755482	0.00	
9330.00†	90.000	89.353	6777.00	3171.96	107.39	3170.56	40.4853645	-104.5751887	0.00	
9430.00†	90.000	89.353	6777.00	3271.96	108.52	3270.55	40.4853648	-104.5748292	0.00	
9530.00†	90.000	89.353	6777.00	3371.96	109.65	3370.55	40.4853650	-104.5744697	0.00	
9630.00†	90.000	89.353	6777.00	3471.96	110.78	3470.54	40.4853653	-104.5741102	0.00	
9730.00†	90.000	89.353	6777.00	3571.96	111.91	3570.53	40.4853655	-104.5737507	0.00	
9830.00†	90.000	89.353	6777.00	3671.95	113.04	3670.53	40.4853657	-104.5733912	0.00	
9930.00†	90.000	89.353	6777.00	3771.95	114.17	3770.52	40.4853660	-104.5730317	0.00	
10030.00†	90.000	89.353	6777.00	3871.95	115.30	3870.52	40.4853662	-104.5726723	0.00	
10130.00†	90.000	89.353	6777.00	3971.95	116.43	3970.51	40.4853664	-104.5723128	0.00	
10230.00†	90.000	89.353	6777.00	4071.95	117.56	4070.50	40.4853666	-104.5719533	0.00	
10330.00†	90.000	89.353	6777.00	4171.94	118.69	4170.50	40.4853669	-104.5715938	0.00	
10430.00†	90.000	89.353	6777.00	4271.94	119.82	4270.49	40.4853671	-104.5712343	0.00	
10530.00†	90.000	89.353	6777.00	4371.94	120.95	4370.48	40.4853673	-104.5708748	0.00	
10630.00†	90.000	89.353	6777.00	4471.94	122.08	4470.48	40.4853676	-104.5705153	0.00	
10730.00†	90.000	89.353	6777.00	4571.94	123.21	4570.47	40.4853678	-104.5701558	0.00	
10830.00†	90.000	89.353	6777.00	4671.93	124.34	4670.46	40.4853680	-104.5697963	0.00	
10930.00†	90.000	89.353	6777.00	4771.93	125.46	4770.46	40.4853682	-104.5694368	0.00	
11030.00†	90.000	89.353	6777.00	4871.93	126.59	4870.45	40.4853684	-104.5690773	0.00	
11130.00†	90.000	89.353	6777.00	4971.93	127.72	4970.44	40.4853687	-104.5687178	0.00	
11230.00†	90.000	89.353	6777.00	5071.93	128.85	5070.44	40.4853689	-104.5683583	0.00	
11330.00†	90.000	89.353	6777.00	5171.92	129.98	5170.43	40.4853691	-104.5679989	0.00	
11430.00†	90.000	89.353	6777.00	5271.92	131.11	5270.43	40.4853693	-104.5676394	0.00	
11530.00†	90.000	89.353	6777.00	5371.92	132.24	5370.42	40.4853695	-104.5672799	0.00	
11630.00†	90.000	89.353	6777.00	5471.92	133.37	5470.41	40.4853697	-104.5669204	0.00	
11730.00†	90.000	89.353	6777.00	5571.91	134.50	5570.41	40.4853700	-104.5665609	0.00	
11830.00†	90.000	89.353	6777.00	5671.91	135.63	5670.40	40.4853702	-104.5662014	0.00	
11930.00†	90.000	89.353	6777.00	5771.91	136.76	5770.39	40.4853704	-104.5658419	0.00	
12030.00†	90.000	89.353	6777.00	5871.91	137.89	5870.39	40.4853706	-104.5654824	0.00	
12130.00†	90.000	89.353	6777.00	5971.91	139.02	5970.38	40.4853708	-104.5651229	0.00	
12230.00†	90.000	89.353	6777.00	6071.90	140.15	6070.37	40.4853710	-104.5647634	0.00	
12330.00†	90.000	89.353	6777.00	6171.90	141.28	6170.37	40.4853712	-104.5644039	0.00	
12430.00†	90.000	89.353	6777.00	6271.90	142.41	6270.36	40.4853714	-104.5640444	0.00	
12530.00†	90.000	89.353	6777.00	6371.90	143.54	6370.36	40.4853716	-104.5636849	0.00	
12630.00†	90.000	89.353	6777.00	6471.90	144.67	6470.35	40.4853718	-104.5633255	0.00	
12730.00†	90.000	89.353	6777.00	6571.89	145.80	6570.34	40.4853720	-104.5629660	0.00	
12830.00†	90.000	89.353	6777.00	6671.89	146.93	6670.34	40.4853722	-104.5626065	0.00	
12930.00†	90.000	89.353	6777.00	6771.89	148.06	6770.33	40.4853724	-104.5622470	0.00	



# Planned Wellpath Report

Foose State A17-647 (REV-A.0) PWP

Page 5 of 7



## REFERENCE WELLPATH IDENTIFICATION

Operator	NOBLE ENERGY, INC	Well	Foose State A17-647
Field	WELD COUNTY (NOBLE NAD 83 GRID)	API/Legal	
Facility	SEC.18-T06N-R64W	Wellbore	Foose State A17-647 PWB
Slot	SLOT#05 Foose State A17-647 (2349'FSL & 799'FEL,SEC.18)		

## WELLPATH DATA (179 stations) † = interpolated, ‡ = extrapolated station

MD [ft]	Inclination [°]	Azimuth [°]	TVD [ft]	Vert Sect [ft]	North [ft]	East [ft]	Latitude	Longitude	DLS [°/100ft]	Comments
13030.00†	90.000	89.353	6777.00	6871.89	149.19	6870.32	40.4853726	-104.5618875	0.00	
13130.00†	90.000	89.353	6777.00	6971.89	150.32	6970.32	40.4853728	-104.5615280	0.00	
13230.00†	90.000	89.353	6777.00	7071.88	151.45	7070.31	40.4853730	-104.5611685	0.00	
13330.00†	90.000	89.353	6777.00	7171.88	152.58	7170.30	40.4853732	-104.5608090	0.00	
13430.00†	90.000	89.353	6777.00	7271.88	153.71	7270.30	40.4853734	-104.5604495	0.00	
13530.00†	90.000	89.353	6777.00	7371.88	154.84	7370.29	40.4853736	-104.5600900	0.00	
13630.00†	90.000	89.353	6777.00	7471.88	155.97	7470.29	40.4853738	-104.5597305	0.00	
13730.00†	90.000	89.353	6777.00	7571.87	157.10	7570.28	40.4853740	-104.5593710	0.00	
13830.00†	90.000	89.353	6777.00	7671.87	158.23	7670.27	40.4853742	-104.5590115	0.00	
13930.00†	90.000	89.353	6777.00	7771.87	159.36	7770.27	40.4853743	-104.5586520	0.00	
14030.00†	90.000	89.353	6777.00	7871.87	160.49	7870.26	40.4853745	-104.5582926	0.00	
14130.00†	90.000	89.353	6777.00	7971.87	161.62	7970.25	40.4853747	-104.5579331	0.00	
14230.00†	90.000	89.353	6777.00	8071.86	162.75	8070.25	40.4853749	-104.5575736	0.00	
14330.00†	90.000	89.353	6777.00	8171.86	163.88	8170.24	40.4853751	-104.5572141	0.00	
14430.00†	90.000	89.353	6777.00	8271.86	165.01	8270.23	40.4853753	-104.5568546	0.00	
14530.00†	90.000	89.353	6777.00	8371.86	166.14	8370.23	40.4853754	-104.5564951	0.00	
14630.00†	90.000	89.353	6777.00	8471.86	167.27	8470.22	40.4853756	-104.5561356	0.00	
14730.00†	90.000	89.353	6777.00	8571.85	168.40	8570.22	40.4853758	-104.5557761	0.00	
14830.00†	90.000	89.353	6777.00	8671.85	169.53	8670.21	40.4853760	-104.5554166	0.00	
14930.00†	90.000	89.353	6777.00	8771.85	170.66	8770.20	40.4853762	-104.5550571	0.00	
15030.00†	90.000	89.353	6777.00	8871.85	171.79	8870.20	40.4853763	-104.5546976	0.00	
15130.00†	90.000	89.353	6777.00	8971.84	172.92	8970.19	40.4853765	-104.5543381	0.00	
15230.00†	90.000	89.353	6777.00	9071.84	174.05	9070.18	40.4853767	-104.5539786	0.00	
15330.00†	90.000	89.353	6777.00	9171.84	175.18	9170.18	40.4853769	-104.5536192	0.00	
15430.00†	90.000	89.353	6777.00	9271.84	176.31	9270.17	40.4853770	-104.5532597	0.00	
15530.00†	90.000	89.353	6777.00	9371.84	177.44	9370.16	40.4853772	-104.5529002	0.00	
15630.00†	90.000	89.353	6777.00	9471.83	178.57	9470.16	40.4853774	-104.5525407	0.00	
15730.00†	90.000	89.353	6777.00	9571.83	179.70	9570.15	40.4853775	-104.5521812	0.00	
15830.00†	90.000	89.353	6777.00	9671.83	180.83	9670.14	40.4853777	-104.5518217	0.00	
15930.00†	90.000	89.353	6777.00	9771.83	181.96	9770.14	40.4853779	-104.5514622	0.00	
16030.00†	90.000	89.353	6777.00	9871.83	183.08	9870.13	40.4853780	-104.5511027	0.00	
16130.00†	90.000	89.353	6777.00	9971.82	184.21	9970.13	40.4853782	-104.5507432	0.00	
16230.00†	90.000	89.353	6777.00	10071.82	185.34	10070.12	40.4853784	-104.5503837	0.00	
16330.00†	90.000	89.353	6777.00	10171.82	186.47	10170.11	40.4853785	-104.5500242	0.00	
16430.00†	90.000	89.353	6777.00	10271.82	187.60	10270.11	40.4853787	-104.5496647	0.00	
16530.00†	90.000	89.353	6777.00	10371.82	188.73	10370.10	40.4853788	-104.5493052	0.00	
16630.00†	90.000	89.353	6777.00	10471.81	189.86	10470.09	40.4853790	-104.5489458	0.00	
16730.00†	90.000	89.353	6777.00	10571.81	190.99	10570.09	40.4853792	-104.5485863	0.00	
16830.00†	90.000	89.353	6777.00	10671.81	192.12	10670.08	40.4853793	-104.5482268	0.00	
16930.00†	90.000	89.353	6777.00	10771.81	193.25	10770.07	40.4853795	-104.5478673	0.00	
17030.00†	90.000	89.353	6777.00	10871.81	194.38	10870.07	40.4853796	-104.5475078	0.00	
17130.00†	90.000	89.353	6777.00	10971.80	195.51	10970.06	40.4853798	-104.5471483	0.00	
17230.00†	90.000	89.353	6777.00	11071.80	196.64	11070.06	40.4853799	-104.5467888	0.00	
17325.94	90.000	89.353	6777.00 <sup>‡</sup>	11167.74	197.73	11165.99	40.4853801	-104.5464439	0.00	BHL

REFERENCE WELLPATH IDENTIFICATION			
Operator	NOBLE ENERGY, INC	Well	Foose State A17-647
Field	WELD COUNTY (NOBLE NAD 83 GRID)	API/Legal	
Facility	SEC.18-T06N-R64W	Wellbore	Foose State A17-647 PWB
Slot	SLOT#05 Foose State A17-647 (2349'FSL & 799'FEL,SEC.18)		

HOLE & CASING SECTIONS - Ref Wellbore: Foose State A17-647 PWB    Ref Wellpath: Foose State A17-647 (REV-A.0) PWP									
String/Diameter	Start MD [ft]	End MD [ft]	Interval [ft]	Start TVD [ft]	End TVD [ft]	Start N/S [ft]	Start E/W [ft]	End N/S [ft]	End E/W [ft]
9.625in Open Hole	30.00	1950.00	1920.00	30.00	1950.00	0.00	0.00	0.00	0.00

TARGETS									
Name	MD [ft]	TVD [ft]	North [ft]	East [ft]	Grid East [US ft]	Grid North [US ft]	Latitude	Longitude	Shape
OGDP 1 SEC.16-T06N-R64W	N/A	-38.00	7370.11	310.64	3254380.72	1428262.61	40.5053800	-104.5852000	polygon
	2D Polygon: dimensions not calculated								
OGDP 1 SEC.17-T06N-R64W	N/A	-38.00	7370.11	310.64	3254380.72	1428262.61	40.5053800	-104.5852000	polygon
	2D Polygon: dimensions not calculated								
OGDP 1 SEC.18-T06N-R64W	N/A	-38.00	7370.11	310.64	3254380.72	1428262.61	40.5053800	-104.5852000	polygon
	2D Polygon: dimensions not calculated								
2) Foose State A17-647 BHL Rev-1 (2432'FSL & 200'FEL,SEC.16)	17325.94	6777.00	197.73	11165.99	3265235.67	1421090.49	40.4853801	-104.5464439	point
1) Foose State A17-647 LP Rev-1 (2415'FSL & 200'FWL,SEC.17)	7156.97	6777.00	82.84	997.67	3255067.72	1420975.60	40.4853591	-104.5830006	point

SURVEY PROGRAM - Ref Wellbore: Foose State A17-647 PWB    Ref Wellpath: Foose State A17-647 (REV-A.0) PWP				
Start MD [ft]	End MD [ft]	Positional Uncertainty Model	Log Name/Comment	Wellbore
30.00	17325.94	OWSG MWD rev2 (MS+IFR1)		Foose State A17-647 PWB



# Planned Wellpath Report

Foose State A17-647 (REV-A.0) PWP  
Page 7 of 7



REFERENCE WELLPATH IDENTIFICATION			
Operator	NOBLE ENERGY, INC	Well	Foose State A17-647
Field	WELD COUNTY (NOBLE NAD 83 GRID)	API/Legal	
Facility	SEC.18-T06N-R64W	Wellbore	Foose State A17-647 PWB
Slot	SLOT#05 Foose State A17-647 (2349'FSL & 799'FEL,SEC.18)		

DESIGN COMMENTS				
MD [ft]	Inclination [°]	Azimuth [°]	TVD [ft]	Comment
30.00	0.000	79.602	30.00	SHL
2000.00	0.000	79.602	2000.00	End of Tangent
2259.76	5.195	79.602	2259.40	Build (XS)
6213.86	5.195	79.602	6197.26	KOP
7156.97	90.000	89.353	6777.00	LP/TPZ
17325.94	90.000	89.353	6777.00	BHL