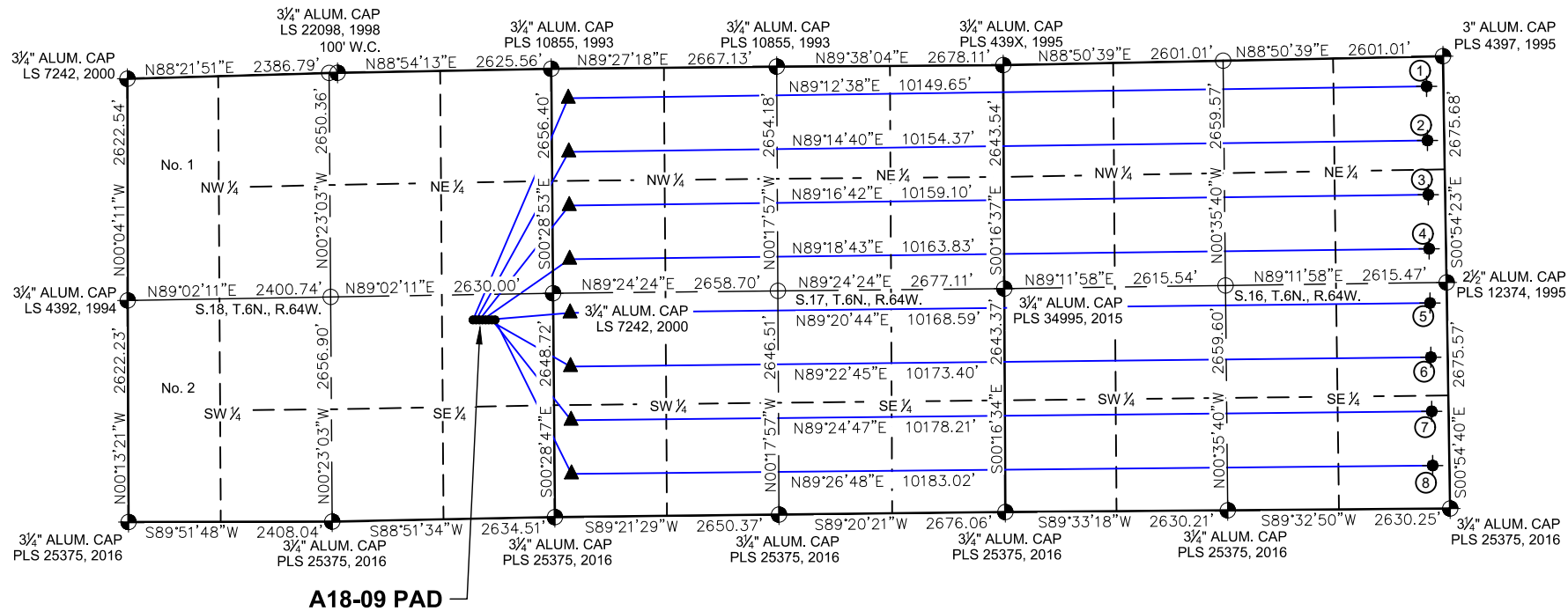
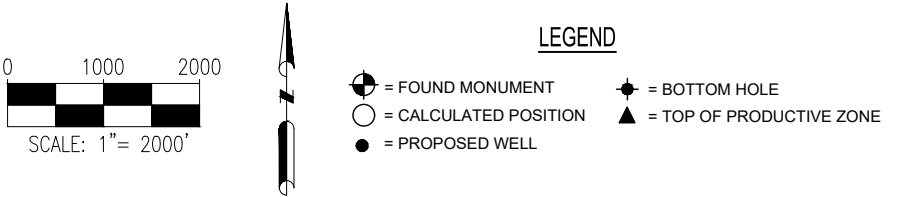
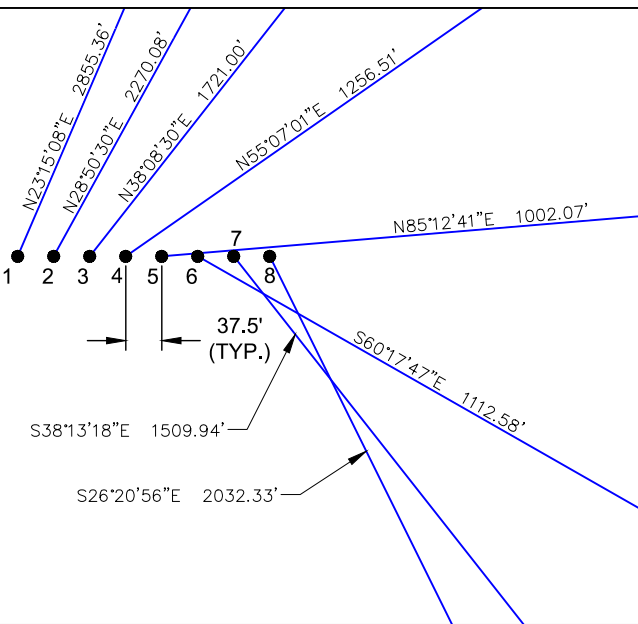


A18-09 PAD  
MULTI-WELL LOCATION PLAT / MULTI-WELL PLAN  
T6N R64W SECTION 18



PROPOSED WELLBORE DIRECTION DATA

A18-09 PAD  
SLOTS 1-8



SURFACE HOLE LOCATION									TOP OF PRODUCTIVE ZONE		BOTTOM HOLE LOCATION	
SLOT	WELL NAME	LATITUDE	LONGITUDE	FOOTAGE		QTR-QTR	ELEV.	PDOP	FOOTAGE		FOOTAGE	
1	FOOSE STATE A17-685	40.485162°N	104.587133°W	2352' FSL	949' FEL	NESE	4702'	1.5	350' FNL	200' FWL	352' FNL	200' FEL
2	FOOSE STATE A17-675	40.485161°N	104.586998°W	2351' FSL	912' FEL	NESE	4702'	1.5	985' FNL	200' FWL	993' FNL	200' FEL
3	FOOSE STATE A17-665	40.485160°N	104.586863°W	2351' FSL	874' FEL	NESE	4703'	1.5	1620' FNL	200' FWL	1634' FNL	200' FEL
4	FOOSE STATE A17-656	40.485159°N	104.586728°W	2350' FSL	837' FEL	NESE	4703'	1.5	2255' FNL	200' FWL	2274' FNL	200' FEL
5	FOOSE STATE A17-647	40.485158°N	104.586593°W	2349' FSL	799' FEL	NESE	4704'	1.5	2415' FSL	200' FWL	2433' FSL	200' FEL
6	FOOSE STATE A17-637	40.485157°N	104.586459°W	2349' FSL	762' FEL	NESE	4704'	1.5	1780' FSL	200' FWL	1792' FSL	200' FEL
7	FOOSE STATE A17-627	40.485156°N	104.586324°W	2348' FSL	724' FEL	NESE	4705'	1.5	1145' FSL	200' FWL	1151' FSL	200' FEL
8	FOOSE STATE A17-618	40.485155°N	104.586189°W	2347' FSL	687' FEL	NESE	4705'	1.5	510' FSL	200' FWL	510' FSL	200' FEL

Notes:  
1) All bearings are Grid Bearings of the Colorado State Plane Coordinate System, North Zone, North American Datum 1983/2011. The lineal dimensions as shown herein are grid distances based upon the "U.S. Survey Foot." To get ground distances multiply shown distance by 1.000263.  
2) Distances are measured at 90° from section line of the Sixth Principal Meridian, County of Weld, State of Colorado.  
3) Ground elevations are based on an observed GPS elevation (NAVD 1988 DATUM).  
4) Surface use: "IRRIGATED CROP LAND"  
5) Instrument Operator: RYAN DESMOND  
6) This map does not represent a boundary survey.