

NOBLE ENERGY, INC

Location: COLORADO Slot: SLOT#08 CARLSON A08-615 (1422°FSL & 807°FEL,SEC.07)

Field: WELD COUNTY (NOBLE NAD 83 GRID) Well: CARLSON A08-615

Facility: SEC.07-T06N-R64W Wellbore: CARLSON A08-615 PWB

Plot reference wellpath is CARLSON A08-615 (REV-B.0) PWP

Grid System: NAD83 / Lambert Colorado SP, Northern Zone (501), US feet

True vertical depths are referenced to (4727°GL+30KB@4757°RKB) (RKB)

North Reference: Grid north

Reference wellpath measured depths are referenced to (4727°GL+30KB@4757°RKB) (RKB)

Scale: True distance

(4727°GL+30KB@4757°RKB) to Mean Sea Level: 4757 feet

Coordinates are in feet referenced to Slot

Mean Sea Level to Ground level (At Slot: SLOT#08 CARLSON A08-615 (1422°FSL & 807°FEL,SEC.07)): 0 feet

Depths are in feet

Offset wellpath MDs are referenced to each path's default MD datum

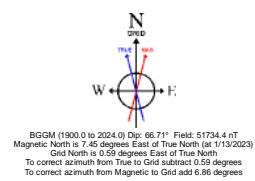
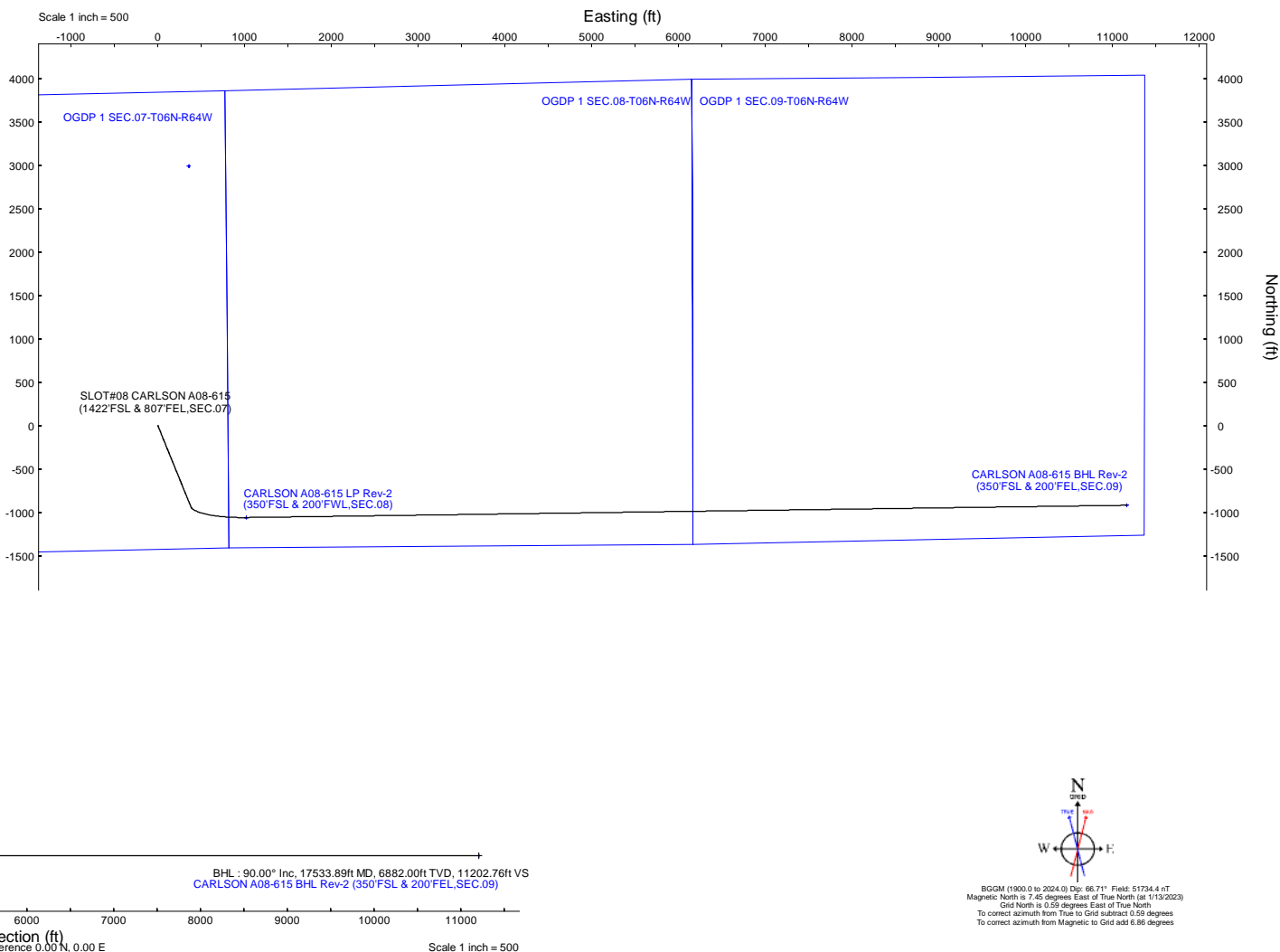
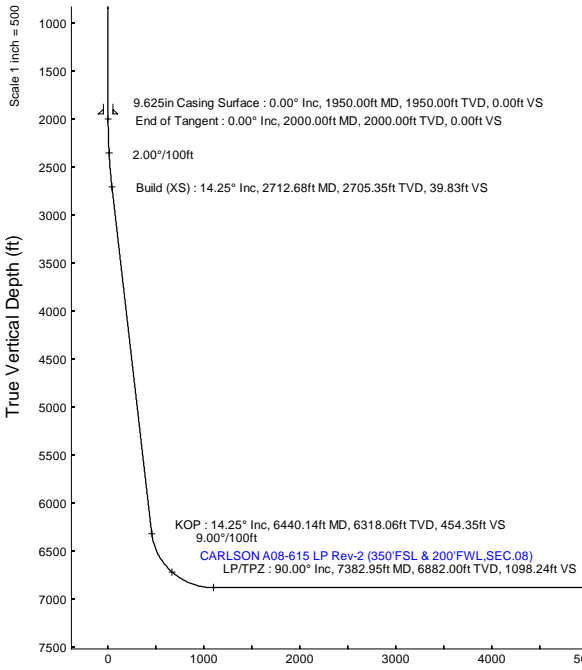
Created by: guanater on 2023-01-19; Database: WA, Denver

Location Information					
Facility Name		Grid East (US ft)	Grid North (US ft)	Latitude	Longitude
SEC.07-T06N-R64W		3254380.716	1428262.611	40°30'19.3680"N	104°35'6.7200"W
Slot	Local N (ft)	Local E (ft)	Grid East (US ft)	Latitude	Longitude
SLOT#08 CARLSON A08-615 (1422°FSL & 807°FEL,SEC.07)	2991.24	-305.76	3254024.980	1425271.480	40°29'49.8480"N 104°35'11.7240"W
(4727°GL+30KB@4757°RKB) to Ground level (At Slot: SLOT#08 CARLSON A08-615 (1422°FSL & 807°FEL,SEC.07))				4757ft	
Mean Sea Level to Ground level (At Slot: SLOT#08 CARLSON A08-615 (1422°FSL & 807°FEL,SEC.07))				0ft	
(4727°GL+30KB@4757°RKB) (RKB) to Mean Sea Level				4757ft	

Survey Program					
Start MD (ft)	End MD (ft)	Tool	Model	Log Name/Comment	Wellbore
30.00	17538.92	OWSG MWD rev2	OWSG MWD rev2 (MS+IFR1)		CARLSON A08-615 PWB

Well Profile Data								
Design Comment	MD (ft)	Inc (°)	Az (°)	TVD (ft)	Local N (ft)	Local E (ft)	DLS (°/100ft)	VS (ft)
SHL	30.00	0.000	157.833	30.00	0.00	0.00	0.00	0.00
End of Tangent	2000.00	0.000	157.833	2000.00	0.00	0.00	0.00	0.00
Build (XS)	2712.68	14.254	157.833	2705.35	-81.67	33.28	2.00	39.83
KOP	6440.14	14.254	157.833	6318.06	-931.59	379.56	0.00	454.35
LP/TPZ	7382.95	90.000	89.201	6882.00	-1056.15	1015.41	9.00	1098.24
BHL	17533.89	90.000	89.201	6882.00	-914.59	11165.36	0.00	11202.76

Targets								
Name	MD (ft)	TVD (ft)	Local N (ft)	Local E (ft)	Grid East (US ft)	Grid North (US ft)	Latitude	Longitude
OGDP 1 SEC.07-T06N-R64W	N/A	-15.00	2991.24	355.75	3254380.72	1428262.61	40°30'19.3680"N	104°35'6.7200"W
OGDP 1 SEC.08-T06N-R64W	N/A	-15.00	2991.24	355.75	3254380.72	1428262.61	40°30'19.3680"N	104°35'6.7200"W
OGDP 1 SEC.09-T06N-R64W	N/A	-15.00	2991.24	355.75	3254380.72	1428262.61	40°30'19.3680"N	104°35'6.7200"W
CARLSON A08-615 BHL Rev-1 (350°FSL & 200°FEL,SEC.09)	N/A	6798.00	-914.59	11165.36	3265189.94	1424356.92	40°29'39.6496"N	104°32'47.3352"W
CARLSON A08-615 LP Rev-1 (350°FSL & 200°FWL,SEC.08)	N/A	6798.00	-1056.15	1015.41	3255040.35	1424215.37	40°29'39.3087"N	104°34'58.7226"W
CARLSON A08-615 BHL Rev-2 (350°FSL & 200°FEL,SEC.09)	17533.89	6882.00	-914.59	11165.36	3265189.94	1424356.92	40°29'39.6496"N	104°32'47.3352"W
CARLSON A08-615 LP Rev-2 (350°FSL & 200°FWL,SEC.08)	7382.95	6882.00	-1056.15	1015.41	3255040.35	1424215.37	40°29'39.3087"N	104°34'58.7226"W





Planned Wellpath Report  
CARLSON A08-615 (REV-B.0) PWP  
Page 1 of 7



REFERENCE WELLPATH IDENTIFICATION			
Operator	NOBLE ENERGY, INC	Well	CARLSON A08-615
Field	WELD COUNTY (NOBLE NAD 83 GRID)	API/Legal	
Facility	SEC.07-T06N-R64W	Wellbore	CARLSON A08-615 PWB
Slot	SLOT#08 CARLSON A08-615 (1422'FSL & 807'FEL,SEC.07)		

REPORT SETUP INFORMATION			
Projection System	NAD83 / Lambert Colorado SP, Northern Zone (501), US feet	Software System	WellArchitect® 6.0
North Reference	Grid	User	Guenaler
Scale	0.999966	Report Generated	1/19/2023 at 7:17:33 AM
Convergence at slot	0.59° East	Database	WA_Denver

WELLPATH LOCATION						
	Local coordinates		Grid coordinates		Geographic coordinates	
	North[ft]	East[ft]	Easting[US ft]	Northing[US ft]	Latitude	Longitude
Slot Location	-2991.24	-355.75	3254024.98	1425271.48	40.4971800°	-104.5865900°
Facility Reference Pt			3254380.72	1428262.61	40.5053800°	-104.5852000°
Field Reference Pt			3000000.00	4454105.15	48.7761986°	-105.5000000°

WELLPATH DATUM			
Calculation method	Minimum curvature	(4727'GL+30'KB@4757'RKB) (RKB) to Facility Vertical Datum	4757.00ft
Horizontal Reference Pt	Slot	(4727'GL+30'KB@4757'RKB) (RKB) to Mean Sea Level	4757.00ft
Vertical Reference Pt	(4727'GL+30'KB@4757'RKB) (RKB)	(4727'GL+30'KB@4757'RKB) (RKB) to Ground Level at Slot (SLOT#08 CARLSON A08-615 (1422'FSL & 807'FEL,SEC.07))	4757.00ft
MD Reference Pt	(4727'GL+30'KB@4757'RKB) (RKB)	Section Origin	N 0.00, E 0.00 ft
Field Vertical Reference	Mean Sea Level	Section Azimuth	94.68°



Planned Wellpath Report  
CARLSON A08-615 (REV-B.0) PWP  
Page 2 of 7



REFERENCE WELLPATH IDENTIFICATION			
Operator	NOBLE ENERGY, INC	Well	CARLSON A08-615
Field	WELD COUNTY (NOBLE NAD 83 GRID)	API/Legal	
Facility	SEC.07-T06N-R64W	Wellbore	CARLSON A08-615 PWB
Slot	SLOT#08 CARLSON A08-615 (1422'FSL & 807'FEL,SEC.07)		

WELLPATH DATA (182 stations) † = interpolated, ‡ = extrapolated station										
MD [ft]	Inclination [°]	Azimuth [°]	TVD [ft]	Vert Sect [ft]	North [ft]	East [ft]	Latitude	Longitude	DLS [°/100ft]	Comments
0.00†	0.000	157.833	0.00	0.00	0.00	0.00	40.4971800	-104.5865900	0.00	
30.00	0.000	157.833	30.00	0.00	0.00	0.00	40.4971800	-104.5865900	0.00	SHL
130.00†	0.000	157.833	130.00	0.00	0.00	0.00	40.4971800	-104.5865900	0.00	
230.00†	0.000	157.833	230.00	0.00	0.00	0.00	40.4971800	-104.5865900	0.00	
330.00†	0.000	157.833	330.00	0.00	0.00	0.00	40.4971800	-104.5865900	0.00	
430.00†	0.000	157.833	430.00	0.00	0.00	0.00	40.4971800	-104.5865900	0.00	
530.00†	0.000	157.833	530.00	0.00	0.00	0.00	40.4971800	-104.5865900	0.00	
630.00†	0.000	157.833	630.00	0.00	0.00	0.00	40.4971800	-104.5865900	0.00	
730.00†	0.000	157.833	730.00	0.00	0.00	0.00	40.4971800	-104.5865900	0.00	
830.00†	0.000	157.833	830.00	0.00	0.00	0.00	40.4971800	-104.5865900	0.00	
930.00†	0.000	157.833	930.00	0.00	0.00	0.00	40.4971800	-104.5865900	0.00	
1030.00†	0.000	157.833	1030.00	0.00	0.00	0.00	40.4971800	-104.5865900	0.00	
1130.00†	0.000	157.833	1130.00	0.00	0.00	0.00	40.4971800	-104.5865900	0.00	
1230.00†	0.000	157.833	1230.00	0.00	0.00	0.00	40.4971800	-104.5865900	0.00	
1330.00†	0.000	157.833	1330.00	0.00	0.00	0.00	40.4971800	-104.5865900	0.00	
1430.00†	0.000	157.833	1430.00	0.00	0.00	0.00	40.4971800	-104.5865900	0.00	
1530.00†	0.000	157.833	1530.00	0.00	0.00	0.00	40.4971800	-104.5865900	0.00	
1630.00†	0.000	157.833	1630.00	0.00	0.00	0.00	40.4971800	-104.5865900	0.00	
1730.00†	0.000	157.833	1730.00	0.00	0.00	0.00	40.4971800	-104.5865900	0.00	
1830.00†	0.000	157.833	1830.00	0.00	0.00	0.00	40.4971800	-104.5865900	0.00	
1930.00†	0.000	157.833	1930.00	0.00	0.00	0.00	40.4971800	-104.5865900	0.00	
2000.00	0.000	157.833	2000.00	0.00	0.00	0.00	40.4971800	-104.5865900	0.00	End of Tangent
2030.00†	0.600	157.833	2030.00	0.07	-0.15	0.06	40.4971796	-104.5865898	2.00	
2130.00†	2.600	157.833	2129.96	1.33	-2.73	1.11	40.4971725	-104.5865861	2.00	
2230.00†	4.600	157.833	2229.75	4.17	-8.55	3.48	40.4971564	-104.5865778	2.00	
2330.00†	6.600	157.833	2329.27	8.58	-17.58	7.16	40.4971315	-104.5865649	2.00	
2430.00†	8.600	157.833	2428.39	14.55	-29.83	12.15	40.4970978	-104.5865474	2.00	
2530.00†	10.600	157.833	2526.98	22.08	-45.27	18.45	40.4970552	-104.5865254	2.00	
2630.00†	12.600	157.833	2624.93	31.16	-63.89	26.03	40.4970039	-104.5864988	2.00	
2712.68	14.254	157.833	2705.35	39.83	-81.67	33.28	40.4969549	-104.5864734	2.00	Build (XS)
2730.00†	14.254	157.833	2722.14	41.76	-85.62	34.88	40.4969440	-104.5864677	0.00	
2830.00†	14.254	157.833	2819.06	52.88	-108.42	44.17	40.4968812	-104.5864352	0.00	
2930.00†	14.254	157.833	2915.98	64.00	-131.23	53.46	40.4968183	-104.5864026	0.00	
3030.00†	14.254	157.833	3012.90	75.12	-154.03	62.75	40.4967555	-104.5863701	0.00	
3130.00†	14.254	157.833	3109.82	86.24	-176.83	72.05	40.4966926	-104.5863375	0.00	
3230.00†	14.254	157.833	3206.75	97.36	-199.63	81.34	40.4966298	-104.5863050	0.00	
3330.00†	14.254	157.833	3303.67	108.48	-222.43	90.63	40.4965669	-104.5862724	0.00	
3430.00†	14.254	157.833	3400.59	119.60	-245.23	99.92	40.4965041	-104.5862399	0.00	
3530.00†	14.254	157.833	3497.51	130.72	-268.03	109.21	40.4964412	-104.5862073	0.00	
3630.00†	14.254	157.833	3594.43	141.84	-290.84	118.50	40.4963784	-104.5861747	0.00	
3730.00†	14.254	157.833	3691.35	152.96	-313.64	127.79	40.4963155	-104.5861422	0.00	
3830.00†	14.254	157.833	3788.28	164.08	-336.44	137.08	40.4962527	-104.5861096	0.00	
3930.00†	14.254	157.833	3885.20	175.21	-359.24	146.37	40.4961898	-104.5860771	0.00	
4030.00†	14.254	157.833	3982.12	186.33	-382.04	155.66	40.4961270	-104.5860445	0.00	
4130.00†	14.254	157.833	4079.04	197.45	-404.84	164.95	40.4960642	-104.5860120	0.00	



Planned Wellpath Report  
CARLSON A08-615 (REV-B.0) PWP  
Page 3 of 7



REFERENCE WELLPATH IDENTIFICATION			
Operator	NOBLE ENERGY, INC	Well	CARLSON A08-615
Field	WELD COUNTY (NOBLE NAD 83 GRID)	API/Legal	
Facility	SEC.07-T06N-R64W	Wellbore	CARLSON A08-615 PWB
Slot	SLOT#08 CARLSON A08-615 (1422'FSL & 807'FEL,SEC.07)		

WELLPATH DATA (182 stations) † = interpolated, ‡ = extrapolated station											
MD [ft]	Inclination [°]	Azimuth [°]	TVD [ft]	Vert Sect [ft]	North [ft]	East [ft]	Latitude	Longitude	DLS [°/100ft]	Comments	
4230.00†	14.254	157.833	4175.96	208.57	-427.65	174.24	40.4960013	-104.5859794	0.00		
4330.00†	14.254	157.833	4272.88	219.69	-450.45	183.53	40.4959385	-104.5859469	0.00		
4430.00†	14.254	157.833	4369.80	230.81	-473.25	192.82	40.4958756	-104.5859143	0.00		
4530.00†	14.254	157.833	4466.73	241.93	-496.05	202.11	40.4958128	-104.5858817	0.00		
4630.00†	14.254	157.833	4563.65	253.05	-518.85	211.40	40.4957499	-104.5858492	0.00		
4730.00†	14.254	157.833	4660.57	264.17	-541.65	220.69	40.4956871	-104.5858166	0.00		
4830.00†	14.254	157.833	4757.49	275.29	-564.46	229.98	40.4956242	-104.5857841	0.00		
4930.00†	14.254	157.833	4854.41	286.41	-587.26	239.27	40.4955614	-104.5857515	0.00		
5030.00†	14.254	157.833	4951.33	297.53	-610.06	248.56	40.4954985	-104.5857190	0.00		
5130.00†	14.254	157.833	5048.25	308.65	-632.86	257.85	40.4954357	-104.5856864	0.00		
5230.00†	14.254	157.833	5145.18	319.77	-655.66	267.14	40.4953728	-104.5856539	0.00		
5330.00†	14.254	157.833	5242.10	330.89	-678.46	276.43	40.4953100	-104.5856213	0.00		
5430.00†	14.254	157.833	5339.02	342.01	-701.27	285.72	40.4952471	-104.5855887	0.00		
5530.00†	14.254	157.833	5435.94	353.13	-724.07	295.01	40.4951843	-104.5855562	0.00		
5630.00†	14.254	157.833	5532.86	364.25	-746.87	304.30	40.4951215	-104.5855236	0.00		
5730.00†	14.254	157.833	5629.78	375.38	-769.67	313.59	40.4950586	-104.5854911	0.00		
5830.00†	14.254	157.833	5726.71	386.50	-792.47	322.88	40.4949958	-104.5854585	0.00		
5930.00†	14.254	157.833	5823.63	397.62	-815.27	332.17	40.4949329	-104.5854260	0.00		
6030.00†	14.254	157.833	5920.55	408.74	-838.08	341.46	40.4948701	-104.5853934	0.00		
6130.00†	14.254	157.833	6017.47	419.86	-860.88	350.75	40.4948072	-104.5853609	0.00		
6230.00†	14.254	157.833	6114.39	430.98	-883.68	360.04	40.4947444	-104.5853283	0.00		
6330.00†	14.254	157.833	6211.31	442.10	-906.48	369.33	40.4946815	-104.5852958	0.00		
6430.00†	14.254	157.833	6308.23	453.22	-929.28	378.62	40.4946187	-104.5852632	0.00		
6440.14	14.254	157.833	6318.06	454.35	-931.59	379.56	40.4946123	-104.5852599	0.00	KOP	
6530.00†	18.685	133.589	6404.31	470.57	-951.80	394.18	40.4945564	-104.5852081	9.00		
6630.00†	25.740	118.587	6496.91	502.95	-973.28	424.92	40.4944966	-104.5850984	9.00		
6730.00†	33.687	109.988	6583.73	549.65	-993.19	470.14	40.4944407	-104.5849365	9.00		
6830.00†	42.021	104.422	6662.64	609.51	-1011.04	528.74	40.4943900	-104.5847265	9.00		
6930.00†	50.549	100.427	6731.70	681.06	-1026.39	599.27	40.4943459	-104.5844735	9.00		
7030.00†	59.183	97.314	6789.20	762.54	-1038.87	679.99	40.4943093	-104.5841837	9.00		
7130.00†	67.879	94.719	6833.74	851.94	-1048.17	768.93	40.4942813	-104.5838643	9.00		
7230.00†	76.612	92.429	6864.21	947.06	-1054.05	863.89	40.4942625	-104.5835232	9.00		
7330.00†	85.363	90.300	6879.86	1045.55	-1056.38	962.52	40.4942533	-104.5831687	9.00		
7382.95	90.000	89.201	6882.00†	1098.24	-1056.15	1015.41	40.4942524	-104.5829785	9.00	LP/TPZ	
7430.00†	90.000	89.201	6882.00	1145.08	-1055.49	1062.46	40.4942529	-104.5828093	0.00		
7530.00†	90.000	89.201	6882.00	1244.62	-1054.10	1162.45	40.4942539	-104.5824498	0.00		
7630.00†	90.000	89.201	6882.00	1344.17	-1052.71	1262.44	40.4942548	-104.5820903	0.00		
7730.00†	90.000	89.201	6882.00	1443.71	-1051.31	1362.43	40.4942558	-104.5817307	0.00		
7830.00†	90.000	89.201	6882.00	1543.25	-1049.92	1462.42	40.4942568	-104.5813712	0.00		
7930.00†	90.000	89.201	6882.00	1642.80	-1048.52	1562.41	40.4942578	-104.5810116	0.00		
8030.00†	90.000	89.201	6882.00	1742.34	-1047.13	1662.40	40.4942588	-104.5806521	0.00		
8130.00†	90.000	89.201	6882.00	1841.88	-1045.73	1762.39	40.4942598	-104.5802926	0.00		
8230.00†	90.000	89.201	6882.00	1941.42	-1044.34	1862.38	40.4942607	-104.5799330	0.00		
8330.00†	90.000	89.201	6882.00	2040.97	-1042.94	1962.37	40.4942617	-104.5795735	0.00		
8430.00†	90.000	89.201	6882.00	2140.51	-1041.55	2062.36	40.4942627	-104.5792140	0.00		



Planned Wellpath Report  
CARLSON A08-615 (REV-B.0) PWP  
Page 4 of 7



REFERENCE WELLPATH IDENTIFICATION			
Operator	NOBLE ENERGY, INC	Well	CARLSON A08-615
Field	WELD COUNTY (NOBLE NAD 83 GRID)	API/Legal	
Facility	SEC.07-T06N-R64W	Wellbore	CARLSON A08-615 PWB
Slot	SLOT#08 CARLSON A08-615 (1422'FSL & 807'FEL,SEC.07)		

WELLPATH DATA (182 stations) † = interpolated, ‡ = extrapolated station										
MD [ft]	Inclination [°]	Azimuth [°]	TVD [ft]	Vert Sect [ft]	North [ft]	East [ft]	Latitude	Longitude	DLS [°/100ft]	Comments
8530.00†	90.000	89.201	6882.00	2240.05	-1040.15	2162.35	40.4942637	-104.5788544	0.00	
8630.00†	90.000	89.201	6882.00	2339.59	-1038.76	2262.34	40.4942647	-104.5784949	0.00	
8730.00†	90.000	89.201	6882.00	2439.14	-1037.37	2362.33	40.4942656	-104.5781353	0.00	
8830.00†	90.000	89.201	6882.00	2538.68	-1035.97	2462.32	40.4942666	-104.5777758	0.00	
8930.00†	90.000	89.201	6882.00	2638.22	-1034.58	2562.31	40.4942676	-104.5774163	0.00	
9030.00†	90.000	89.201	6882.00	2737.76	-1033.18	2662.30	40.4942686	-104.5770567	0.00	
9130.00†	90.000	89.201	6882.00	2837.31	-1031.79	2762.29	40.4942695	-104.5766972	0.00	
9230.00†	90.000	89.201	6882.00	2936.85	-1030.39	2862.28	40.4942705	-104.5763376	0.00	
9330.00†	90.000	89.201	6882.00	3036.39	-1029.00	2962.27	40.4942715	-104.5759781	0.00	
9430.00†	90.000	89.201	6882.00	3135.94	-1027.60	3062.26	40.4942724	-104.5756186	0.00	
9530.00†	90.000	89.201	6882.00	3235.48	-1026.21	3162.25	40.4942734	-104.5752590	0.00	
9630.00†	90.000	89.201	6882.00	3335.02	-1024.82	3262.24	40.4942744	-104.5748995	0.00	
9730.00†	90.000	89.201	6882.00	3434.56	-1023.42	3362.23	40.4942753	-104.5745400	0.00	
9830.00†	90.000	89.201	6882.00	3534.11	-1022.03	3462.22	40.4942763	-104.5741804	0.00	
9930.00†	90.000	89.201	6882.00	3633.65	-1020.63	3562.22	40.4942772	-104.5738209	0.00	
10030.00†	90.000	89.201	6882.00	3733.19	-1019.24	3662.21	40.4942782	-104.5734613	0.00	
10130.00†	90.000	89.201	6882.00	3832.73	-1017.84	3762.20	40.4942792	-104.5731018	0.00	
10230.00†	90.000	89.201	6882.00	3932.28	-1016.45	3862.19	40.4942801	-104.5727423	0.00	
10330.00†	90.000	89.201	6882.00	4031.82	-1015.05	3962.18	40.4942811	-104.5723827	0.00	
10430.00†	90.000	89.201	6882.00	4131.36	-1013.66	4062.17	40.4942820	-104.5720232	0.00	
10530.00†	90.000	89.201	6882.00	4230.90	-1012.26	4162.16	40.4942830	-104.5716637	0.00	
10630.00†	90.000	89.201	6882.00	4330.45	-1010.87	4262.15	40.4942839	-104.5713041	0.00	
10730.00†	90.000	89.201	6882.00	4429.99	-1009.48	4362.14	40.4942849	-104.5709446	0.00	
10830.00†	90.000	89.201	6882.00	4529.53	-1008.08	4462.13	40.4942859	-104.5705850	0.00	
10930.00†	90.000	89.201	6882.00	4629.07	-1006.69	4562.12	40.4942868	-104.5702255	0.00	
11030.00†	90.000	89.201	6882.00	4728.62	-1005.29	4662.11	40.4942878	-104.5698660	0.00	
11130.00†	90.000	89.201	6882.00	4828.16	-1003.90	4762.10	40.4942887	-104.5695064	0.00	
11230.00†	90.000	89.201	6882.00	4927.70	-1002.50	4862.09	40.4942896	-104.5691469	0.00	
11330.00†	90.000	89.201	6882.00	5027.25	-1001.11	4962.08	40.4942906	-104.5687873	0.00	
11430.00†	90.000	89.201	6882.00	5126.79	-999.71	5062.07	40.4942915	-104.5684278	0.00	
11530.00†	90.000	89.201	6882.00	5226.33	-998.32	5162.06	40.4942925	-104.5680683	0.00	
11630.00†	90.000	89.201	6882.00	5325.87	-996.92	5262.05	40.4942934	-104.5677087	0.00	
11730.00†	90.000	89.201	6882.00	5425.42	-995.53	5362.04	40.4942944	-104.5673492	0.00	
11830.00†	90.000	89.201	6882.00	5524.96	-994.14	5462.03	40.4942953	-104.5669897	0.00	
11930.00†	90.000	89.201	6882.00	5624.50	-992.74	5562.02	40.4942962	-104.5666301	0.00	
12030.00†	90.000	89.201	6882.00	5724.04	-991.35	5662.01	40.4942972	-104.5662706	0.00	
12130.00†	90.000	89.201	6882.00	5823.59	-989.95	5762.00	40.4942981	-104.5659110	0.00	
12230.00†	90.000	89.201	6882.00	5923.13	-988.56	5861.99	40.4942991	-104.5655515	0.00	
12330.00†	90.000	89.201	6882.00	6022.67	-987.16	5961.98	40.4943000	-104.5651920	0.00	
12430.00†	90.000	89.201	6882.00	6122.21	-985.77	6061.97	40.4943009	-104.5648324	0.00	
12530.00†	90.000	89.201	6882.00	6221.76	-984.37	6161.96	40.4943019	-104.5644729	0.00	
12630.00†	90.000	89.201	6882.00	6321.30	-982.98	6261.95	40.4943028	-104.5641134	0.00	
12730.00†	90.000	89.201	6882.00	6420.84	-981.58	6361.94	40.4943037	-104.5637538	0.00	
12830.00†	90.000	89.201	6882.00	6520.39	-980.19	6461.93	40.4943046	-104.5633943	0.00	
12930.00†	90.000	89.201	6882.00	6619.93	-978.80	6561.92	40.4943056	-104.5630347	0.00	





Planned Wellpath Report

CARLSON A08-615 (REV-B.0) PWP

Page 5 of 7



REFERENCE WELLPATH IDENTIFICATION			
Operator	NOBLE ENERGY, INC	Well	CARLSON A08-615
Field	WELD COUNTY (NOBLE NAD 83 GRID)	API/Legal	
Facility	SEC.07-T06N-R64W	Wellbore	CARLSON A08-615 PWB
Slot	SLOT#08 CARLSON A08-615 (1422'FSL & 807'FEL,SEC.07)		

WELLPATH DATA (182 stations) † = interpolated, ‡ = extrapolated station										
MD [ft]	Inclination [°]	Azimuth [°]	TVD [ft]	Vert Sect [ft]	North [ft]	East [ft]	Latitude	Longitude	DLS [°/100ft]	Comments
13030.00†	90.000	89.201	6882.00	6719.47	-977.40	6661.91	40.4943065	-104.5626752	0.00	
13130.00†	90.000	89.201	6882.00	6819.01	-976.01	6761.90	40.4943074	-104.5623157	0.00	
13230.00†	90.000	89.201	6882.00	6918.56	-974.61	6861.89	40.4943084	-104.5619561	0.00	
13330.00†	90.000	89.201	6882.00	7018.10	-973.22	6961.88	40.4943093	-104.5615966	0.00	
13430.00†	90.000	89.201	6882.00	7117.64	-971.82	7061.87	40.4943102	-104.5612370	0.00	
13530.00†	90.000	89.201	6882.00	7217.18	-970.43	7161.87	40.4943111	-104.5608775	0.00	
13630.00†	90.000	89.201	6882.00	7316.73	-969.03	7261.86	40.4943120	-104.5605180	0.00	
13730.00†	90.000	89.201	6882.00	7416.27	-967.64	7361.85	40.4943130	-104.5601584	0.00	
13830.00†	90.000	89.201	6882.00	7515.81	-966.24	7461.84	40.4943139	-104.5597989	0.00	
13930.00†	90.000	89.201	6882.00	7615.35	-964.85	7561.83	40.4943148	-104.5594394	0.00	
14030.00†	90.000	89.201	6882.00	7714.90	-963.46	7661.82	40.4943157	-104.5590798	0.00	
14130.00†	90.000	89.201	6882.00	7814.44	-962.06	7761.81	40.4943166	-104.5587203	0.00	
14230.00†	90.000	89.201	6882.00	7913.98	-960.67	7861.80	40.4943175	-104.5583607	0.00	
14330.00†	90.000	89.201	6882.00	8013.53	-959.27	7961.79	40.4943185	-104.5580012	0.00	
14430.00†	90.000	89.201	6882.00	8113.07	-957.88	8061.78	40.4943194	-104.5576417	0.00	
14530.00†	90.000	89.201	6882.00	8212.61	-956.48	8161.77	40.4943203	-104.5572821	0.00	
14630.00†	90.000	89.201	6882.00	8312.15	-955.09	8261.76	40.4943212	-104.5569226	0.00	
14730.00†	90.000	89.201	6882.00	8411.70	-953.69	8361.75	40.4943221	-104.5565630	0.00	
14830.00†	90.000	89.201	6882.00	8511.24	-952.30	8461.74	40.4943230	-104.5562035	0.00	
14930.00†	90.000	89.201	6882.00	8610.78	-950.90	8561.73	40.4943239	-104.5558440	0.00	
15030.00†	90.000	89.201	6882.00	8710.32	-949.51	8661.72	40.4943248	-104.5554844	0.00	
15130.00†	90.000	89.201	6882.00	8809.87	-948.12	8761.71	40.4943257	-104.5551249	0.00	
15230.00†	90.000	89.201	6882.00	8909.41	-946.72	8861.70	40.4943266	-104.5547654	0.00	
15330.00†	90.000	89.201	6882.00	9008.95	-945.33	8961.69	40.4943275	-104.5544058	0.00	
15430.00†	90.000	89.201	6882.00	9108.49	-943.93	9061.68	40.4943284	-104.5540463	0.00	
15530.00†	90.000	89.201	6882.00	9208.04	-942.54	9161.67	40.4943293	-104.5536867	0.00	
15630.00†	90.000	89.201	6882.00	9307.58	-941.14	9261.66	40.4943302	-104.5533272	0.00	
15730.00†	90.000	89.201	6882.00	9407.12	-939.75	9361.65	40.4943311	-104.5529677	0.00	
15830.00†	90.000	89.201	6882.00	9506.66	-938.35	9461.64	40.4943320	-104.5526081	0.00	
15930.00†	90.000	89.201	6882.00	9606.21	-936.96	9561.63	40.4943329	-104.5522486	0.00	
16030.00†	90.000	89.201	6882.00	9705.75	-935.57	9661.62	40.4943338	-104.5518890	0.00	
16130.00†	90.000	89.201	6882.00	9805.29	-934.17	9761.61	40.4943347	-104.5515295	0.00	
16230.00†	90.000	89.201	6882.00	9904.84	-932.78	9861.60	40.4943356	-104.5511700	0.00	
16330.00†	90.000	89.201	6882.00	10004.38	-931.38	9961.59	40.4943365	-104.5508104	0.00	
16430.00†	90.000	89.201	6882.00	10103.92	-929.99	10061.58	40.4943374	-104.5504509	0.00	
16530.00†	90.000	89.201	6882.00	10203.46	-928.59	10161.57	40.4943382	-104.5500914	0.00	
16630.00†	90.000	89.201	6882.00	10303.01	-927.20	10261.56	40.4943391	-104.5497318	0.00	
16730.00†	90.000	89.201	6882.00	10402.55	-925.80	10361.55	40.4943400	-104.5493723	0.00	
16830.00†	90.000	89.201	6882.00	10502.09	-924.41	10461.54	40.4943409	-104.5490127	0.00	
16930.00†	90.000	89.201	6882.00	10601.63	-923.01	10561.53	40.4943418	-104.5486532	0.00	
17030.00†	90.000	89.201	6882.00	10701.18	-921.62	10661.52	40.4943427	-104.5482937	0.00	
17130.00†	90.000	89.201	6882.00	10800.72	-920.23	10761.52	40.4943436	-104.5479341	0.00	
17230.00†	90.000	89.201	6882.00	10900.26	-918.83	10861.51	40.4943444	-104.5475746	0.00	
17330.00†	90.000	89.201	6882.00	10999.80	-917.44	10961.50	40.4943453	-104.5472150	0.00	
17430.00†	90.000	89.201	6882.00	11099.35	-916.04	11061.49	40.4943462	-104.5468555	0.00	



Planned Wellpath Report

CARLSON A08-615 (REV-B.0) PWP

Page 6 of 7



REFERENCE WELLPATH IDENTIFICATION			
Operator	NOBLE ENERGY, INC	Well	CARLSON A08-615
Field	WELD COUNTY (NOBLE NAD 83 GRID)	API/Legal	
Facility	SEC.07-T06N-R64W	Wellbore	CARLSON A08-615 PWB
Slot	SLOT#08 CARLSON A08-615 (1422'FSL & 807'FEL,SEC.07)		

WELLPATH DATA (182 stations) † = interpolated, ‡ = extrapolated station										
MD [ft]	Inclination [°]	Azimuth [°]	TVD [ft]	Vert Sect [ft]	North [ft]	East [ft]	Latitude	Longitude	DLS [°/100ft]	Comments
17530.00†	90.000	89.201	6882.00	11198.89	-914.65	11161.48	40.4943471	-104.5464960	0.00	
17533.89	90.000	89.201	6882.00‡	11202.76	-914.59	11165.36	40.4943471	-104.5464820	0.00	BHL

HOLE & CASING SECTIONS - Ref Wellbore: CARLSON A08-615 PWB    Ref Wellpath: CARLSON A08-615 (REV-B.0) PWP									
String/Diameter	Start MD [ft]	End MD [ft]	Interval [ft]	Start TVD [ft]	End TVD [ft]	Start N/S [ft]	Start E/W [ft]	End N/S [ft]	End E/W [ft]
9.625in Casing Surface	30.00	1950.00	1920.00	30.00	1950.00	0.00	0.00	0.00	0.00

TARGETS									
Name	MD [ft]	TVD [ft]	North [ft]	East [ft]	Grid East [US ft]	Grid North [US ft]	Latitude	Longitude	Shape
OGDP 1 SEC.07-T06N-R64W	N/A	-15.00	2991.24	355.75	3254380.72	1428262.61	40.5053800	-104.5852000	polygon
	2D Polygon: dimensions not calculated								
OGDP 1 SEC.08-T06N-R64W	N/A	-15.00	2991.24	355.75	3254380.72	1428262.61	40.5053800	-104.5852000	polygon
	2D Polygon: dimensions not calculated								
OGDP 1 SEC.09-T06N-R64W	N/A	-15.00	2991.24	355.75	3254380.72	1428262.61	40.5053800	-104.5852000	polygon
	2D Polygon: dimensions not calculated								
CARLSON A08-615 BHL Rev-1 (350'FSL & 200'FEL,SEC.09)	N/A	6798.00	-914.59	11165.36	3265189.94	1424356.92	40.4943471	-104.5464820	point
CARLSON A08-615 LP Rev-1 (350'FSL & 200'FWL,SEC.08)	N/A	6798.00	-1056.15	1015.41	3255040.35	1424215.37	40.4942524	-104.5829785	point
2) CARLSON A08-615 BHL Rev-2 (350'FSL & 200'FEL,SEC.09)	17533.89	6882.00	-914.59	11165.36	3265189.94	1424356.92	40.4943471	-104.5464820	point
1) CARLSON A08-615 LP Rev-2 (350'FSL & 200'FWL,SEC.08)	7382.95	6882.00	-1056.15	1015.41	3255040.35	1424215.37	40.4942524	-104.5829785	point

SURVEY PROGRAM - Ref Wellbore: CARLSON A08-615 PWB    Ref Wellpath: CARLSON A08-615 (REV-B.0) PWP				
Start MD [ft]	End MD [ft]	Positional Uncertainty Model	Log Name/Comment	Wellbore
30.00	17538.92	OWSG MWD rev2 (MS+IFR1)		CARLSON A08-615 PWB



Planned Wellpath Report  
CARLSON A08-615 (REV-B.0) PWP  
Page 7 of 7



REFERENCE WELLPATH IDENTIFICATION			
Operator	NOBLE ENERGY, INC	Well	CARLSON A08-615
Field	WELD COUNTY (NOBLE NAD 83 GRID)	API/Legal	
Facility	SEC.07-T06N-R64W	Wellbore	CARLSON A08-615 PWB
Slot	SLOT#08 CARLSON A08-615 (1422'FSL & 807'FEL,SEC.07)		

DESIGN COMMENTS				
MD [ft]	Inclination [°]	Azimuth [°]	TVD [ft]	Comment
30.00	0.000	157.833	30.00	SHL
2000.00	0.000	157.833	2000.00	End of Tangent
2712.68	14.254	157.833	2705.35	Build (XS)
6440.14	14.254	157.833	6318.06	KOP
7382.95	90.000	89.201	6882.00	LP/TPZ
17533.89	90.000	89.201	6882.00	BHL