

NOBLE ENERGY, INC

Location: COLORADO Slot: SLOT#04 BISHOP A08-655 (863°FNL & 312°FEL,SEC.07)

Field: WELD COUNTY (NOBLE NAD 83 GRID) Well: BISHOP A08-655

Facility: SEC.07-T06N-R64W Wellbore: BISHOP A08-655 PWB

Plot reference wellpath is BISHOP A08-655 (REV-A.0) PWP

True vertical depths are referenced to (4743GL+30KB@4773RKB) (RKB)

Reference wellpath measured depths are referenced to (4743GL+30KB@4773RKB) (RKB)

(4743GL+30KB@4773RKB) (RKB) to Mean Sea Level: 4773 feet

Mean Sea Level to Ground level (At Slot: SLOT#04 BISHOP A08-655 (863°FNL & 312°FEL,SEC.07)): 0 feet

Offset wellpath MDs are referenced to each path's default MD datum

Grid System: NAD83 / Lambert Colorado SP, Northern Zone (501), US feet

North Reference: Grid north

Scale: True distance

Coordinates are in feet referenced to Slot

Depths are in feet

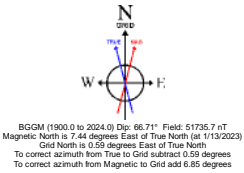
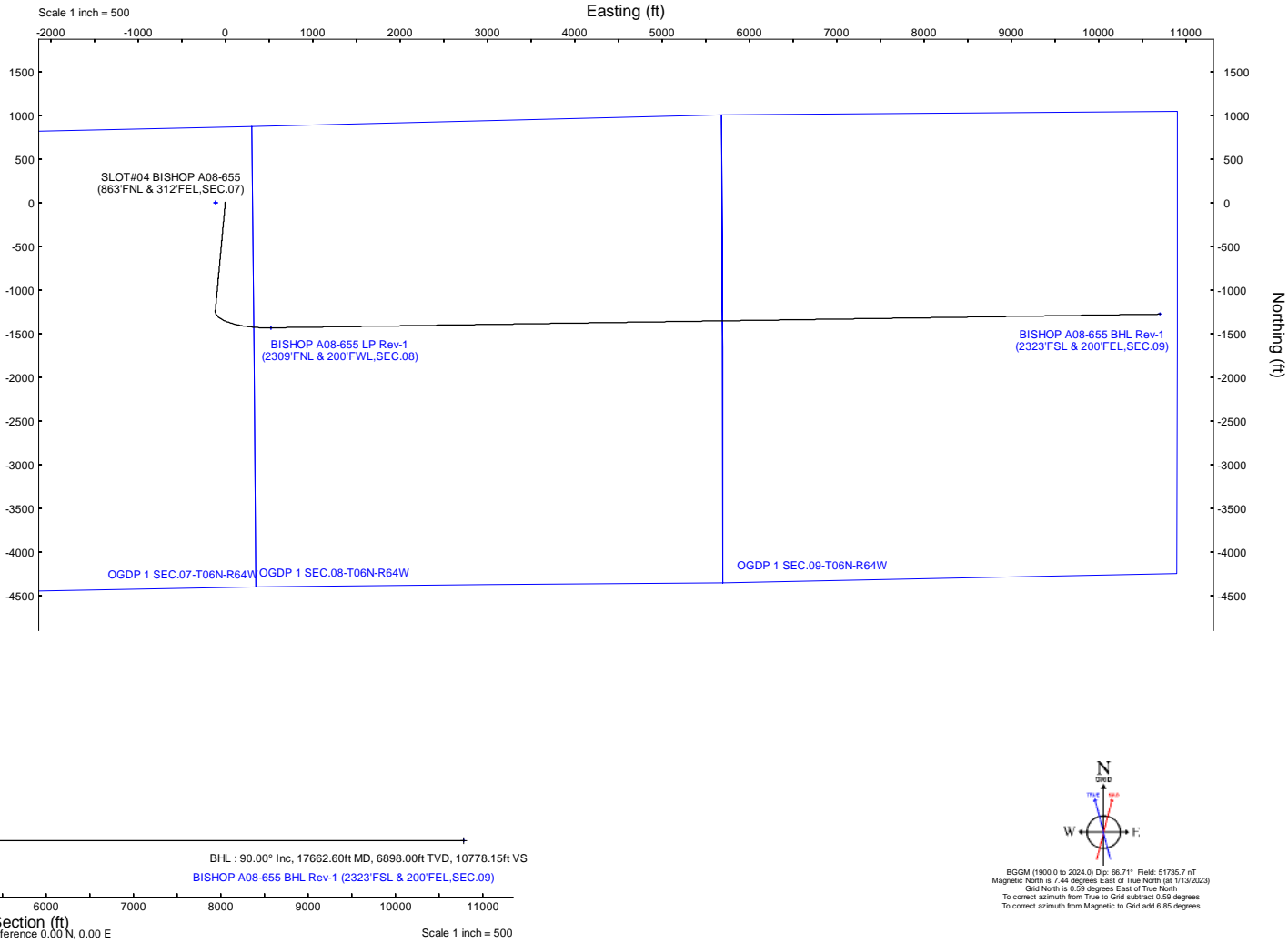
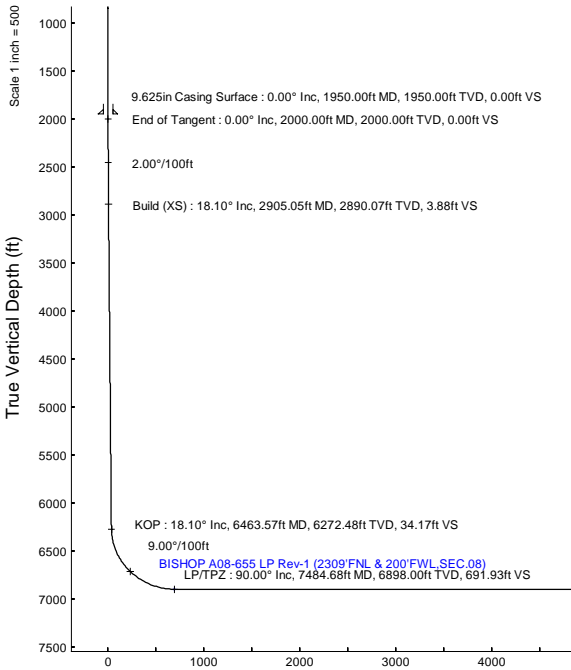
Created by: guenaler on 2023-01-13; Database: WA\_Denver

Location Information					
Facility Name			Grid East (US ft)	Grid North (US ft)	Latitude
SEC.07-T06N-R64W			3254380.716	1428262.611	40°30'19.3680"N
Slot			Local N (ft)	Local E (ft)	Longitude
SLOT#04 BISHOP A08-655 (863°FNL & 312°FEL,SEC.07)			1.15	111.23	104°35'6.7200"W
(4743GL+30KB@4773RKB) (RKB) to Ground level (At Slot: SLOT#04 BISHOP A08-655 (863°FNL & 312°FEL,SEC.07))			4773ft		
Mean Sea Level to Ground level (At Slot: SLOT#04 BISHOP A08-655 (863°FNL & 312°FEL,SEC.07))			0ft		
(4743GL+30KB@4773RKB) (RKB) to Mean Sea Level			4773ft		

Survey Program					
Start MD (ft)	End MD (ft)	Tool	Model	Log Name/Comment	Wellbore
30.00	17662.60	OWSG MWD rev2	OWSG MWD rev2 (MS+IFR1)		BISHOP A08-655 PWB

Well Profile Data								
Design Comment	MD (ft)	Inc (°)	Az (°)	TVD (ft)	Local N (ft)	Local E (ft)	DLS (°/100ft)	VS (ft)
SHL	30.00	0.000	185.248	30.00	0.00	0.00	0.00	0.00
End of Tangent	2000.00	0.000	185.248	2000.00	0.00	0.00	0.00	0.00
Build (XS)	2905.05	18.101	185.248	2890.07	-141.18	-12.97	2.00	3.88
KOP	6463.57	18.101	185.248	6272.48	-1242.16	-114.09	0.00	34.17
LP/TPZ	7484.68	90.000	89.120	6898.00	-1435.67	525.23	9.00	691.93
BHL	17662.60	90.000	89.120	6898.00	-1279.40	10701.94	0.00	10778.15

Targets								
Name	MD (ft)	TVD (ft)	Local N (ft)	Local E (ft)	Grid East (US ft)	Grid North (US ft)	Latitude	Longitude
OGDP 1 SEC.07-T06N-R64W	N/A	1.00	-1.15	-111.23	3254380.72	1428262.61	40°30'19.3680"N	104°35'6.7200"W
OGDP 1 SEC.08-T06N-R64W	N/A	1.00	-1.15	-111.23	3254380.72	1428262.61	40°30'19.3680"N	104°35'6.7200"W
OGDP 1 SEC.09-T06N-R64W	N/A	1.00	-1.15	-111.23	3254380.72	1428262.61	40°30'19.3680"N	104°35'6.7200"W
BISHOP A08-655 BHL Rev-1 (2323FSL & 200FEL,SEC.09)	17662.60	6898.00	-1279.40	10701.94	3265193.51	1426984.41	40°30'5.6121"N	104°32'46.9233"W
BISHOP A08-655 LP Rev-1 (2309FNL & 200FWL,SEC.08)	7484.68	6898.00	-1435.67	525.23	3255017.15	1426828.14	40°30'5.1287"N	104°34'58.6732"W





Planned Wellpath Report

BISHOP A08-655 (REV-A.0) PWP

Page 1 of 7



REFERENCE WELLPATH IDENTIFICATION			
Operator	NOBLE ENERGY, INC	Well	BISHOP A08-655
Field	WELD COUNTY (NOBLE NAD 83 GRID)	API/Legal	
Facility	SEC.07-T06N-R64W	Wellbore	BISHOP A08-655 PWB
Slot	SLOT#04 BISHOP A08-655 (863'FNL & 312'FEL,SEC.07)		

REPORT SETUP INFORMATION			
Projection System	NAD83 / Lambert Colorado SP, Northern Zone (501), US feet	Software System	WellArchitect® 6.0
North Reference	Grid	User	Guenaler
Scale	0.999967	Report Generated	1/13/2023 at 1:40:28 PM
Convergence at slot	0.59° East	Database	WA_Denver

WELLPATH LOCATION						
	Local coordinates		Grid coordinates		Geographic coordinates	
	North[ft]	East[ft]	Easting[US ft]	Northing[US ft]	Latitude	Longitude
Slot Location	1.15	111.23	3254491.94	1428263.76	40.5053800°	-104.5848000°
Facility Reference Pt			3254380.72	1428262.61	40.5053800°	-104.5852000°
Field Reference Pt			3000000.00	4454105.15	48.7761986°	-105.5000000°

WELLPATH DATUM			
Calculation method	Minimum curvature	(4743'GL+30'KB@4773'RKB) (RKB) to Facility Vertical Datum	4773.00ft
Horizontal Reference Pt	Slot	(4743'GL+30'KB@4773'RKB) (RKB) to Mean Sea Level	4773.00ft
Vertical Reference Pt	(4743'GL+30'KB@4773'RKB) (RKB)	(4743'GL+30'KB@4773'RKB) (RKB) to Ground Level at Slot (SLOT#04 BISHOP A08-655 (863'FNL & 312'FEL,SEC.07))	4773.00ft
MD Reference Pt	(4743'GL+30'KB@4773'RKB) (RKB)	Section Origin	N 0.00, E 0.00 ft
Field Vertical Reference	Mean Sea Level	Section Azimuth	96.82°



Planned Wellpath Report  
BISHOP A08-655 (REV-A.0) PWP  
Page 2 of 7



REFERENCE WELLPATH IDENTIFICATION			
Operator	NOBLE ENERGY, INC	Well	BISHOP A08-655
Field	WELD COUNTY (NOBLE NAD 83 GRID)	API/Legal	
Facility	SEC.07-T06N-R64W	Wellbore	BISHOP A08-655 PWB
Slot	SLOT#04 BISHOP A08-655 (863'FNL & 312'FEL,SEC.07)		

WELLPATH DATA (183 stations) † = interpolated, ‡ = extrapolated station										
MD [ft]	Inclination [°]	Azimuth [°]	TVD [ft]	Vert Sect [ft]	North [ft]	East [ft]	Latitude	Longitude	DLS [°/100ft]	Comments
0.00†	0.000	185.248	0.00	0.00	0.00	0.00	40.5053800	-104.5848000	0.00	
30.00	0.000	185.248	30.00	0.00	0.00	0.00	40.5053800	-104.5848000	0.00	SHL
130.00†	0.000	185.248	130.00	0.00	0.00	0.00	40.5053800	-104.5848000	0.00	
230.00†	0.000	185.248	230.00	0.00	0.00	0.00	40.5053800	-104.5848000	0.00	
330.00†	0.000	185.248	330.00	0.00	0.00	0.00	40.5053800	-104.5848000	0.00	
430.00†	0.000	185.248	430.00	0.00	0.00	0.00	40.5053800	-104.5848000	0.00	
530.00†	0.000	185.248	530.00	0.00	0.00	0.00	40.5053800	-104.5848000	0.00	
630.00†	0.000	185.248	630.00	0.00	0.00	0.00	40.5053800	-104.5848000	0.00	
730.00†	0.000	185.248	730.00	0.00	0.00	0.00	40.5053800	-104.5848000	0.00	
830.00†	0.000	185.248	830.00	0.00	0.00	0.00	40.5053800	-104.5848000	0.00	
930.00†	0.000	185.248	930.00	0.00	0.00	0.00	40.5053800	-104.5848000	0.00	
1030.00†	0.000	185.248	1030.00	0.00	0.00	0.00	40.5053800	-104.5848000	0.00	
1130.00†	0.000	185.248	1130.00	0.00	0.00	0.00	40.5053800	-104.5848000	0.00	
1230.00†	0.000	185.248	1230.00	0.00	0.00	0.00	40.5053800	-104.5848000	0.00	
1330.00†	0.000	185.248	1330.00	0.00	0.00	0.00	40.5053800	-104.5848000	0.00	
1430.00†	0.000	185.248	1430.00	0.00	0.00	0.00	40.5053800	-104.5848000	0.00	
1530.00†	0.000	185.248	1530.00	0.00	0.00	0.00	40.5053800	-104.5848000	0.00	
1630.00†	0.000	185.248	1630.00	0.00	0.00	0.00	40.5053800	-104.5848000	0.00	
1730.00†	0.000	185.248	1730.00	0.00	0.00	0.00	40.5053800	-104.5848000	0.00	
1830.00†	0.000	185.248	1830.00	0.00	0.00	0.00	40.5053800	-104.5848000	0.00	
1930.00†	0.000	185.248	1930.00	0.00	0.00	0.00	40.5053800	-104.5848000	0.00	
2000.00	0.000	185.248	2000.00	0.00	0.00	0.00	40.5053800	-104.5848000	0.00	End of Tangent
2030.00†	0.600	185.248	2030.00	0.00	-0.16	-0.01	40.5053796	-104.5848001	2.00	
2130.00†	2.600	185.248	2129.96	0.08	-2.94	-0.27	40.5053719	-104.5848011	2.00	
2230.00†	4.600	185.248	2229.75	0.25	-9.19	-0.84	40.5053548	-104.5848034	2.00	
2330.00†	6.600	185.248	2329.27	0.52	-18.91	-1.74	40.5053282	-104.5848069	2.00	
2430.00†	8.600	185.248	2428.39	0.88	-32.08	-2.95	40.5052920	-104.5848118	2.00	
2530.00†	10.600	185.248	2526.98	1.34	-48.68	-4.47	40.5052465	-104.5848179	2.00	
2630.00†	12.600	185.248	2624.93	1.89	-68.70	-6.31	40.5051916	-104.5848252	2.00	
2730.00†	14.600	185.248	2722.13	2.53	-92.12	-8.46	40.5051274	-104.5848338	2.00	
2830.00†	16.600	185.248	2818.44	3.27	-118.90	-10.92	40.5050540	-104.5848437	2.00	
2905.05	18.101	185.248	2890.07	3.88	-141.18	-12.97	40.5049929	-104.5848519	2.00	End of Build (XS)
2930.00†	18.101	185.248	2913.79	4.10	-148.90	-13.68	40.5049717	-104.5848547	0.00	
3030.00†	18.101	185.248	3008.84	4.95	-179.84	-16.52	40.5048869	-104.5848661	0.00	
3130.00†	18.101	185.248	3103.89	5.80	-210.78	-19.36	40.5048020	-104.5848774	0.00	
3230.00†	18.101	185.248	3198.94	6.65	-241.72	-22.20	40.5047172	-104.5848888	0.00	
3330.00†	18.101	185.248	3293.99	7.50	-272.66	-25.04	40.5046323	-104.5849002	0.00	
3430.00†	18.101	185.248	3389.04	8.35	-303.60	-27.88	40.5045475	-104.5849115	0.00	
3530.00†	18.101	185.248	3484.09	9.20	-334.54	-30.73	40.5044627	-104.5849229	0.00	
3630.00†	18.101	185.248	3579.14	10.05	-365.48	-33.57	40.5043778	-104.5849343	0.00	
3730.00†	18.101	185.248	3674.19	10.90	-396.42	-36.41	40.5042930	-104.5849456	0.00	
3830.00†	18.101	185.248	3769.24	11.76	-427.36	-39.25	40.5042081	-104.5849570	0.00	
3930.00†	18.101	185.248	3864.29	12.61	-458.29	-42.09	40.5041233	-104.5849684	0.00	
4030.00†	18.101	185.248	3959.35	13.46	-489.23	-44.93	40.5040385	-104.5849797	0.00	
4130.00†	18.101	185.248	4054.40	14.31	-520.17	-47.78	40.5039536	-104.5849911	0.00	



Planned Wellpath Report  
BISHOP A08-655 (REV-A.0) PWP  
Page 3 of 7



REFERENCE WELLPATH IDENTIFICATION			
Operator	NOBLE ENERGY, INC	Well	BISHOP A08-655
Field	WELD COUNTY (NOBLE NAD 83 GRID)	API/Legal	
Facility	SEC.07-T06N-R64W	Wellbore	BISHOP A08-655 PWB
Slot	SLOT#04 BISHOP A08-655 (863'FNL & 312'FEL,SEC.07)		

WELLPATH DATA (183 stations) † = interpolated, ‡ = extrapolated station										
MD [ft]	Inclination [°]	Azimuth [°]	TVD [ft]	Vert Sect [ft]	North [ft]	East [ft]	Latitude	Longitude	DLS [°/100ft]	Comments
4230.00†	18.101	185.248	4149.45	15.16	-551.11	-50.62	40.5038688	-104.5850025	0.00	
4330.00†	18.101	185.248	4244.50	16.01	-582.05	-53.46	40.5037840	-104.5850138	0.00	
4430.00†	18.101	185.248	4339.55	16.86	-612.99	-56.30	40.5036991	-104.5850252	0.00	
4530.00†	18.101	185.248	4434.60	17.71	-643.93	-59.14	40.5036143	-104.5850366	0.00	
4630.00†	18.101	185.248	4529.65	18.56	-674.87	-61.98	40.5035294	-104.5850479	0.00	
4730.00†	18.101	185.248	4624.70	19.41	-705.81	-64.83	40.5034446	-104.5850593	0.00	
4830.00†	18.101	185.248	4719.75	20.27	-736.75	-67.67	40.5033598	-104.5850707	0.00	
4930.00†	18.101	185.248	4814.80	21.12	-767.69	-70.51	40.5032749	-104.5850820	0.00	
5030.00†	18.101	185.248	4909.86	21.97	-798.63	-73.35	40.5031901	-104.5850934	0.00	
5130.00†	18.101	185.248	5004.91	22.82	-829.57	-76.19	40.5031052	-104.5851047	0.00	
5230.00†	18.101	185.248	5099.96	23.67	-860.50	-79.03	40.5030204	-104.5851161	0.00	
5330.00†	18.101	185.248	5195.01	24.52	-891.44	-81.88	40.5029356	-104.5851275	0.00	
5430.00†	18.101	185.248	5290.06	25.37	-922.38	-84.72	40.5028507	-104.5851388	0.00	
5530.00†	18.101	185.248	5385.11	26.22	-953.32	-87.56	40.5027659	-104.5851502	0.00	
5630.00†	18.101	185.248	5480.16	27.07	-984.26	-90.40	40.5026811	-104.5851616	0.00	
5730.00†	18.101	185.248	5575.21	27.93	-1015.20	-93.24	40.5025962	-104.5851729	0.00	
5830.00†	18.101	185.248	5670.26	28.78	-1046.14	-96.08	40.5025114	-104.5851843	0.00	
5930.00†	18.101	185.248	5765.31	29.63	-1077.08	-98.92	40.5024265	-104.5851957	0.00	
6030.00†	18.101	185.248	5860.37	30.48	-1108.02	-101.77	40.5023417	-104.5852070	0.00	
6130.00†	18.101	185.248	5955.42	31.33	-1138.96	-104.61	40.5022569	-104.5852184	0.00	
6230.00†	18.101	185.248	6050.47	32.18	-1169.90	-107.45	40.5021720	-104.5852298	0.00	
6330.00†	18.101	185.248	6145.52	33.03	-1200.84	-110.29	40.5020872	-104.5852411	0.00	
6430.00†	18.101	185.248	6240.57	33.88	-1231.78	-113.13	40.5020023	-104.5852525	0.00	
6463.57	18.101	185.248	6272.48	34.17	-1242.16	-114.09	40.5019739	-104.5852563	0.00	KOP
6530.00†	18.446	166.130	6335.62	38.17	-1262.66	-112.51	40.5019176	-104.5852514	9.00	
6630.00†	22.125	142.192	6429.56	57.02	-1292.96	-97.14	40.5018340	-104.5851973	9.00	
6730.00†	28.201	126.428	6520.13	90.86	-1321.93	-66.52	40.5017536	-104.5850882	9.00	
6830.00†	35.460	116.270	6605.09	138.86	-1348.85	-21.41	40.5016784	-104.5849270	9.00	
6930.00†	43.307	109.290	6682.36	199.82	-1373.07	37.09	40.5016103	-104.5847176	9.00	
7030.00†	51.468	104.120	6750.03	272.25	-1393.98	107.54	40.5015509	-104.5844651	9.00	
7130.00†	59.810	100.019	6806.44	354.36	-1411.08	188.20	40.5015017	-104.5841757	9.00	
7230.00†	68.260	96.567	6850.19	444.14	-1423.94	277.08	40.5014639	-104.5838566	9.00	
7330.00†	76.773	93.501	6880.22	539.37	-1432.24	371.99	40.5014384	-104.5835156	9.00	
7430.00†	85.320	90.645	6895.77	637.71	-1435.78	470.61	40.5014259	-104.5831612	9.00	
7484.68	90.000	89.120	6898.00 <sup>†</sup>	691.93	-1435.67	525.23	40.5014246	-104.5829648	9.00	LP/TPZ
7530.00†	90.000	89.120	6898.00	736.84	-1434.97	570.54	40.5014253	-104.5828018	0.00	
7630.00†	90.000	89.120	6898.00	835.94	-1433.43	670.53	40.5014266	-104.5824422	0.00	
7730.00†	90.000	89.120	6898.00	935.04	-1431.90	770.52	40.5014280	-104.5820827	0.00	
7830.00†	90.000	89.120	6898.00	1034.14	-1430.36	870.51	40.5014294	-104.5817231	0.00	
7930.00†	90.000	89.120	6898.00	1133.24	-1428.83	970.49	40.5014307	-104.5813635	0.00	
8030.00†	90.000	89.120	6898.00	1232.34	-1427.29	1070.48	40.5014321	-104.5810040	0.00	
8130.00†	90.000	89.120	6898.00	1331.44	-1425.76	1170.47	40.5014335	-104.5806444	0.00	
8230.00†	90.000	89.120	6898.00	1430.54	-1424.22	1270.46	40.5014349	-104.5802848	0.00	
8330.00†	90.000	89.120	6898.00	1529.63	-1422.69	1370.45	40.5014362	-104.5799252	0.00	
8430.00†	90.000	89.120	6898.00	1628.73	-1421.15	1470.43	40.5014376	-104.5795657	0.00	



Planned Wellpath Report  
BISHOP A08-655 (REV-A.0) PWP  
Page 4 of 7



REFERENCE WELLPATH IDENTIFICATION			
Operator	NOBLE ENERGY, INC	Well	BISHOP A08-655
Field	WELD COUNTY (NOBLE NAD 83 GRID)	API/Legal	
Facility	SEC.07-T06N-R64W	Wellbore	BISHOP A08-655 PWB
Slot	SLOT#04 BISHOP A08-655 (863'FNL & 312'FEL,SEC.07)		

WELLPATH DATA (183 stations) † = interpolated, ‡ = extrapolated station										
MD [ft]	Inclination [°]	Azimuth [°]	TVD [ft]	Vert Sect [ft]	North [ft]	East [ft]	Latitude	Longitude	DLS [°/100ft]	Comments
8530.00†	90.000	89.120	6898.00	1727.83	-1419.62	1570.42	40.5014390	-104.5792061	0.00	
8630.00†	90.000	89.120	6898.00	1826.93	-1418.08	1670.41	40.5014403	-104.5788465	0.00	
8730.00†	90.000	89.120	6898.00	1926.03	-1416.55	1770.40	40.5014417	-104.5784869	0.00	
8830.00†	90.000	89.120	6898.00	2025.13	-1415.01	1870.39	40.5014430	-104.5781274	0.00	
8930.00†	90.000	89.120	6898.00	2124.23	-1413.47	1970.38	40.5014444	-104.5777678	0.00	
9030.00†	90.000	89.120	6898.00	2223.33	-1411.94	2070.36	40.5014458	-104.5774082	0.00	
9130.00†	90.000	89.120	6898.00	2322.43	-1410.40	2170.35	40.5014471	-104.5770486	0.00	
9230.00†	90.000	89.120	6898.00	2421.53	-1408.87	2270.34	40.5014485	-104.5766891	0.00	
9330.00†	90.000	89.120	6898.00	2520.62	-1407.33	2370.33	40.5014498	-104.5763295	0.00	
9430.00†	90.000	89.120	6898.00	2619.72	-1405.80	2470.32	40.5014512	-104.5759699	0.00	
9530.00†	90.000	89.120	6898.00	2718.82	-1404.26	2570.31	40.5014525	-104.5756103	0.00	
9630.00†	90.000	89.120	6898.00	2817.92	-1402.73	2670.29	40.5014539	-104.5752508	0.00	
9730.00†	90.000	89.120	6898.00	2917.02	-1401.19	2770.28	40.5014552	-104.5748912	0.00	
9830.00†	90.000	89.120	6898.00	3016.12	-1399.66	2870.27	40.5014566	-104.5745316	0.00	
9930.00†	90.000	89.120	6898.00	3115.22	-1398.12	2970.26	40.5014579	-104.5741720	0.00	
10030.00†	90.000	89.120	6898.00	3214.32	-1396.59	3070.25	40.5014593	-104.5738125	0.00	
10130.00†	90.000	89.120	6898.00	3313.42	-1395.05	3170.23	40.5014606	-104.5734529	0.00	
10230.00†	90.000	89.120	6898.00	3412.52	-1393.52	3270.22	40.5014620	-104.5730933	0.00	
10330.00†	90.000	89.120	6898.00	3511.61	-1391.98	3370.21	40.5014633	-104.5727337	0.00	
10430.00†	90.000	89.120	6898.00	3610.71	-1390.44	3470.20	40.5014647	-104.5723742	0.00	
10530.00†	90.000	89.120	6898.00	3709.81	-1388.91	3570.19	40.5014660	-104.5720146	0.00	
10630.00†	90.000	89.120	6898.00	3808.91	-1387.37	3670.18	40.5014674	-104.5716550	0.00	
10730.00†	90.000	89.120	6898.00	3908.01	-1385.84	3770.16	40.5014687	-104.5712954	0.00	
10830.00†	90.000	89.120	6898.00	4007.11	-1384.30	3870.15	40.5014700	-104.5709359	0.00	
10930.00†	90.000	89.120	6898.00	4106.21	-1382.77	3970.14	40.5014714	-104.5705763	0.00	
11030.00†	90.000	89.120	6898.00	4205.31	-1381.23	4070.13	40.5014727	-104.5702167	0.00	
11130.00†	90.000	89.120	6898.00	4304.41	-1379.70	4170.12	40.5014740	-104.5698572	0.00	
11230.00†	90.000	89.120	6898.00	4403.51	-1378.16	4270.10	40.5014754	-104.5694976	0.00	
11330.00†	90.000	89.120	6898.00	4502.61	-1376.63	4370.09	40.5014767	-104.5691380	0.00	
11430.00†	90.000	89.120	6898.00	4601.70	-1375.09	4470.08	40.5014780	-104.5687784	0.00	
11530.00†	90.000	89.120	6898.00	4700.80	-1373.56	4570.07	40.5014794	-104.5684189	0.00	
11630.00†	90.000	89.120	6898.00	4799.90	-1372.02	4670.06	40.5014807	-104.5680593	0.00	
11730.00†	90.000	89.120	6898.00	4899.00	-1370.48	4770.05	40.5014820	-104.5676997	0.00	
11830.00†	90.000	89.120	6898.00	4998.10	-1368.95	4870.03	40.5014834	-104.5673401	0.00	
11930.00†	90.000	89.120	6898.00	5097.20	-1367.41	4970.02	40.5014847	-104.5669806	0.00	
12030.00†	90.000	89.120	6898.00	5196.30	-1365.88	5070.01	40.5014860	-104.5666210	0.00	
12130.00†	90.000	89.120	6898.00	5295.40	-1364.34	5170.00	40.5014873	-104.5662614	0.00	
12230.00†	90.000	89.120	6898.00	5394.50	-1362.81	5269.99	40.5014887	-104.5659018	0.00	
12330.00†	90.000	89.120	6898.00	5493.60	-1361.27	5369.98	40.5014900	-104.5655423	0.00	
12430.00†	90.000	89.120	6898.00	5592.69	-1359.74	5469.96	40.5014913	-104.5651827	0.00	
12530.00†	90.000	89.120	6898.00	5691.79	-1358.20	5569.95	40.5014926	-104.5648231	0.00	
12630.00†	90.000	89.120	6898.00	5790.89	-1356.67	5669.94	40.5014940	-104.5644635	0.00	
12730.00†	90.000	89.120	6898.00	5889.99	-1355.13	5769.93	40.5014953	-104.5641040	0.00	
12830.00†	90.000	89.120	6898.00	5989.09	-1353.60	5869.92	40.5014966	-104.5637444	0.00	
12930.00†	90.000	89.120	6898.00	6088.19	-1352.06	5969.90	40.5014979	-104.5633848	0.00	





Planned Wellpath Report  
BISHOP A08-655 (REV-A.0) PWP  
Page 5 of 7



REFERENCE WELLPATH IDENTIFICATION			
Operator	NOBLE ENERGY, INC	Well	BISHOP A08-655
Field	WELD COUNTY (NOBLE NAD 83 GRID)	API/Legal	
Facility	SEC.07-T06N-R64W	Wellbore	BISHOP A08-655 PWB
Slot	SLOT#04 BISHOP A08-655 (863'FNL & 312'FEL,SEC.07)		

WELLPATH DATA (183 stations) † = interpolated, ‡ = extrapolated station										
MD [ft]	Inclination [°]	Azimuth [°]	TVD [ft]	Vert Sect [ft]	North [ft]	East [ft]	Latitude	Longitude	DLS [°/100ft]	Comments
13030.00†	90.000	89.120	6898.00	6187.29	-1350.52	6069.89	40.5014992	-104.5630252	0.00	
13130.00†	90.000	89.120	6898.00	6286.39	-1348.99	6169.88	40.5015005	-104.5626657	0.00	
13230.00†	90.000	89.120	6898.00	6385.49	-1347.45	6269.87	40.5015018	-104.5623061	0.00	
13330.00†	90.000	89.120	6898.00	6484.59	-1345.92	6369.86	40.5015032	-104.5619465	0.00	
13430.00†	90.000	89.120	6898.00	6583.68	-1344.38	6469.85	40.5015045	-104.5615869	0.00	
13530.00†	90.000	89.120	6898.00	6682.78	-1342.85	6569.83	40.5015058	-104.5612274	0.00	
13630.00†	90.000	89.120	6898.00	6781.88	-1341.31	6669.82	40.5015071	-104.5608678	0.00	
13730.00†	90.000	89.120	6898.00	6880.98	-1339.78	6769.81	40.5015084	-104.5605082	0.00	
13830.00†	90.000	89.120	6898.00	6980.08	-1338.24	6869.80	40.5015097	-104.5601486	0.00	
13930.00†	90.000	89.120	6898.00	7079.18	-1336.71	6969.79	40.5015110	-104.5597891	0.00	
14030.00†	90.000	89.120	6898.00	7178.28	-1335.17	7069.77	40.5015123	-104.5594295	0.00	
14130.00†	90.000	89.120	6898.00	7277.38	-1333.64	7169.76	40.5015136	-104.5590699	0.00	
14230.00†	90.000	89.120	6898.00	7376.48	-1332.10	7269.75	40.5015149	-104.5587103	0.00	
14330.00†	90.000	89.120	6898.00	7475.58	-1330.56	7369.74	40.5015162	-104.5583508	0.00	
14430.00†	90.000	89.120	6898.00	7574.67	-1329.03	7469.73	40.5015175	-104.5579912	0.00	
14530.00†	90.000	89.120	6898.00	7673.77	-1327.49	7569.72	40.5015188	-104.5576316	0.00	
14630.00†	90.000	89.120	6898.00	7772.87	-1325.96	7669.70	40.5015201	-104.5572720	0.00	
14730.00†	90.000	89.120	6898.00	7871.97	-1324.42	7769.69	40.5015214	-104.5569125	0.00	
14830.00†	90.000	89.120	6898.00	7971.07	-1322.89	7869.68	40.5015227	-104.5565529	0.00	
14930.00†	90.000	89.120	6898.00	8070.17	-1321.35	7969.67	40.5015240	-104.5561933	0.00	
15030.00†	90.000	89.120	6898.00	8169.27	-1319.82	8069.66	40.5015253	-104.5558337	0.00	
15130.00†	90.000	89.120	6898.00	8268.37	-1318.28	8169.65	40.5015266	-104.5554742	0.00	
15230.00†	90.000	89.120	6898.00	8367.47	-1316.75	8269.63	40.5015279	-104.5551146	0.00	
15330.00†	90.000	89.120	6898.00	8466.57	-1315.21	8369.62	40.5015291	-104.5547550	0.00	
15430.00†	90.000	89.120	6898.00	8565.67	-1313.68	8469.61	40.5015304	-104.5543954	0.00	
15530.00†	90.000	89.120	6898.00	8664.76	-1312.14	8569.60	40.5015317	-104.5540359	0.00	
15630.00†	90.000	89.120	6898.00	8763.86	-1310.61	8669.59	40.5015330	-104.5536763	0.00	
15730.00†	90.000	89.120	6898.00	8862.96	-1309.07	8769.57	40.5015343	-104.5533167	0.00	
15830.00†	90.000	89.120	6898.00	8962.06	-1307.53	8869.56	40.5015356	-104.5529571	0.00	
15930.00†	90.000	89.120	6898.00	9061.16	-1306.00	8969.55	40.5015369	-104.5525976	0.00	
16030.00†	90.000	89.120	6898.00	9160.26	-1304.46	9069.54	40.5015381	-104.5522380	0.00	
16130.00†	90.000	89.120	6898.00	9259.36	-1302.93	9169.53	40.5015394	-104.5518784	0.00	
16230.00†	90.000	89.120	6898.00	9358.46	-1301.39	9269.52	40.5015407	-104.5515188	0.00	
16330.00†	90.000	89.120	6898.00	9457.56	-1299.86	9369.50	40.5015420	-104.5511593	0.00	
16430.00†	90.000	89.120	6898.00	9556.66	-1298.32	9469.49	40.5015433	-104.5507997	0.00	
16530.00†	90.000	89.120	6898.00	9655.75	-1296.79	9569.48	40.5015445	-104.5504401	0.00	
16630.00†	90.000	89.120	6898.00	9754.85	-1295.25	9669.47	40.5015458	-104.5500805	0.00	
16730.00†	90.000	89.120	6898.00	9853.95	-1293.72	9769.46	40.5015471	-104.5497210	0.00	
16830.00†	90.000	89.120	6898.00	9953.05	-1292.18	9869.44	40.5015484	-104.5493614	0.00	
16930.00†	90.000	89.120	6898.00	10052.15	-1290.65	9969.43	40.5015496	-104.5490018	0.00	
17030.00†	90.000	89.120	6898.00	10151.25	-1289.11	10069.42	40.5015509	-104.5486422	0.00	
17130.00†	90.000	89.120	6898.00	10250.35	-1287.57	10169.41	40.5015522	-104.5482827	0.00	
17230.00†	90.000	89.120	6898.00	10349.45	-1286.04	10269.40	40.5015534	-104.5479231	0.00	
17330.00†	90.000	89.120	6898.00	10448.55	-1284.50	10369.39	40.5015547	-104.5475635	0.00	
17430.00†	90.000	89.120	6898.00	10547.65	-1282.97	10469.37	40.5015560	-104.5472039	0.00	



Planned Wellpath Report

BISHOP A08-655 (REV-A.0) PWP

Page 6 of 7



REFERENCE WELLPATH IDENTIFICATION			
Operator	NOBLE ENERGY, INC	Well	BISHOP A08-655
Field	WELD COUNTY (NOBLE NAD 83 GRID)	API/Legal	
Facility	SEC.07-T06N-R64W	Wellbore	BISHOP A08-655 PWB
Slot	SLOT#04 BISHOP A08-655 (863'FNL & 312'FEL,SEC.07)		

WELLPATH DATA (183 stations) † = interpolated, ‡ = extrapolated station										
MD [ft]	Inclination [°]	Azimuth [°]	TVD [ft]	Vert Sect [ft]	North [ft]	East [ft]	Latitude	Longitude	DLS [°/100ft]	Comments
17530.00†	90.000	89.120	6898.00	10646.74	-1281.43	10569.36	40.5015572	-104.5468444	0.00	
17630.00†	90.000	89.120	6898.00	10745.84	-1279.90	10669.35	40.5015585	-104.5464848	0.00	
17662.60	90.000	89.120	6898.00‡	10778.15	-1279.40	10701.94	40.5015589	-104.5463676	0.00	BHL

TARGETS									
Name	MD [ft]	TVD [ft]	North [ft]	East [ft]	Grid East [US ft]	Grid North [US ft]	Latitude	Longitude	Shape
OGDP 1 SEC.07-T06N-R64W	N/A	1.00	-1.15	-111.23	3254380.72	1428262.61	40.5053800	-104.5852000	polygon
	2D Polygon: dimensions not calculated								
OGDP 1 SEC.08-T06N-R64W	N/A	1.00	-1.15	-111.23	3254380.72	1428262.61	40.5053800	-104.5852000	polygon
	2D Polygon: dimensions not calculated								
OGDP 1 SEC.09-T06N-R64W	N/A	1.00	-1.15	-111.23	3254380.72	1428262.61	40.5053800	-104.5852000	polygon
	2D Polygon: dimensions not calculated								
2) BISHOP A08-655 BHL Rev-1 (2323'FSL & 200'FEL,SEC.09)	17662.60	6898.00	-1279.40	10701.94	3265193.51	1426984.41	40.5015589	-104.5463676	point
1) BISHOP A08-655 LP Rev-1 (2309'FNL & 200'FWL,SEC.08)	7484.68	6898.00	-1435.67	525.23	3255017.15	1426828.14	40.5014246	-104.5829648	point

SURVEY PROGRAM - Ref Wellbore: BISHOP A08-655 PWB    Ref Wellpath: BISHOP A08-655 (REV-A.0) PWP				
Start MD [ft]	End MD [ft]	Positional Uncertainty Model	Log Name/Comment	Wellbore
30.00	17662.60	OWSG MWD rev2 (MS+IFR1)		BISHOP A08-655 PWB



Planned Wellpath Report  
BISHOP A08-655 (REV-A.0) PWP  
Page 7 of 7



REFERENCE WELLPATH IDENTIFICATION			
Operator	NOBLE ENERGY, INC	Well	BISHOP A08-655
Field	WELD COUNTY (NOBLE NAD 83 GRID)	API/Legal	
Facility	SEC.07-T06N-R64W	Wellbore	BISHOP A08-655 PWB
Slot	SLOT#04 BISHOP A08-655 (863'FNL & 312'FEL,SEC.07)		

DESIGN COMMENTS				
MD [ft]	Inclination [°]	Azimuth [°]	TVD [ft]	Comment
30.00	0.000	185.248	30.00	SHL
2000.00	0.000	185.248	2000.00	End of Tangent
2905.05	18.101	185.248	2890.07	End of Build (XS)
6463.57	18.101	185.248	6272.48	KOP
7484.68	90.000	89.120	6898.00	LP/TPZ
17662.60	90.000	89.120	6898.00	BHL