

NOBLE ENERGY, INC

Location:	COLORADO	Slot:	SLOT#03 BISHOP A08-665 (862°FNL & 349°FEL,SEC.07)
Field:	WELD COUNTY (NOBLE NAD 83 GRID)	Well:	BISHOP A08-665
Facility:	SEC.07-T06N-R64W	Wellbore:	BISHOP A08-665 PWB

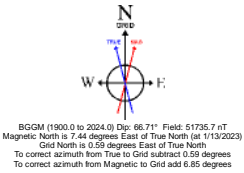
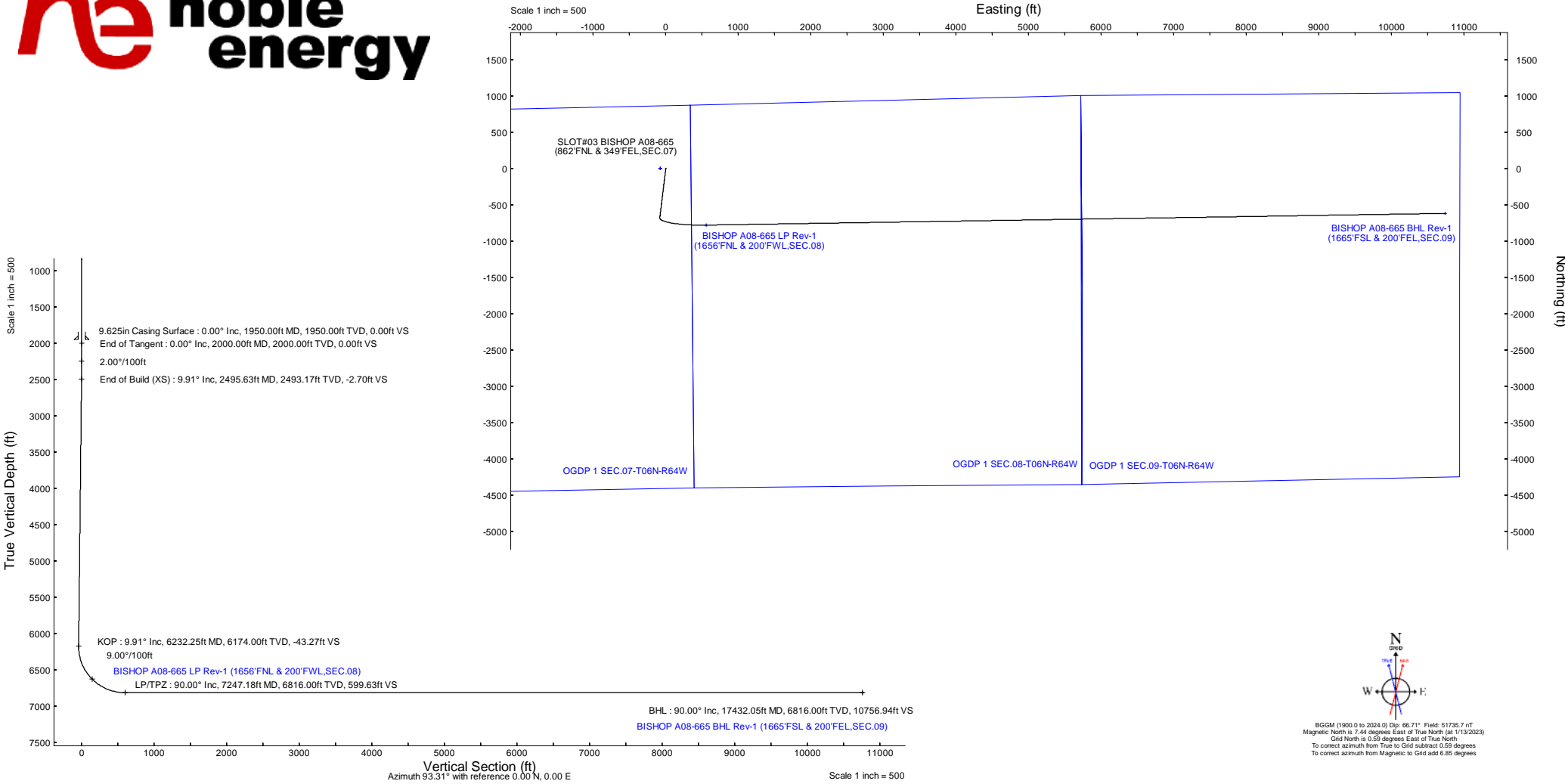
Plot reference wellpath is BISHOP A08-665 (REV-A.0) PWP	Grid System: NAD83 / Lambert Colorado SP, Northern Zone (501), US feet
True vertical depths are referenced to (4743 GL+30 KB@4773 RKB) (RKB)	North Reference: Grid north
Reference wellpath measured depths are referenced to (4743 GL+30 KB@4773 RKB) (RKB)	Scale: True distance
(4743 GL+30 KB@4773 RKB) (RKB) to Mean Sea Level: 4773 feet	Coordinates are in feet referenced to Slot
Mean Sea Level to Ground level (At Slot: SLOT#03 BISHOP A08-665 (862°FNL & 349°FEL,SEC.07)): 0 feet	Depths are in feet
Offset wellpath MDs are referenced to each path's default MD datum	Created by: guenaler on 2023-01-13; Database: WA_Denver

Location Information					
Facility Name		Grid East (US ft)	Grid North (US ft)	Latitude	Longitude
SEC.07-T06N-R64W		3254380.72	1428262.61	40°30'19.3680"N	104°35'6.7200"W
Slot	Local N (ft)	Local E (ft)	Grid East (US ft)	Grid North (US ft)	Latitude
SLOT#03 BISHOP A08-665 (862°FNL & 349°FEL,SEC.07)	0.77	75.08	3254455.793	1428263.396	40°30'19.3680"N
(4743 GL+30 KB@4773 RKB) to Ground level (At Slot: SLOT#03 BISHOP A08-665 (862°FNL & 349°FEL,SEC.07))				4773 ft	
Mean Sea Level to Ground level (At Slot: SLOT#03 BISHOP A08-665 (862°FNL & 349°FEL,SEC.07))				0 ft	
(4743 GL+30 KB@4773 RKB) to Mean Sea Level				4773 ft	

Survey Program					
Start MD (ft)	End MD (ft)	Tool	Model	Log Name/Comment	Wellbore
30.00	17432.05	OWSG MWD rev2	OWSG MWD rev2 (MS+IFR1)		BISHOP A08-665 PWB

Well Profile Data								
Design Comment	MD (ft)	Inc (°)	Az (°)	TVD (ft)	Local N (ft)	Local E (ft)	DLS (°/100ft)	VS (ft)
SHL	30.00	0.000	186.925	30.00	0.00	0.00	0.00	0.00
End of Tangent	2000.00	0.000	186.925	2000.00	0.00	0.00	0.00	0.00
End of Build (XS)	2495.63	9.913	186.925	2493.17	-42.46	-5.16	2.00	-2.70
KOP	6232.25	9.913	186.925	6174.00	-681.01	-82.72	0.00	-43.27
LP/TPZ	7247.18	90.000	89.094	6816.00	-782.08	555.41	9.00	599.63
BHL	17432.05	90.000	89.094	6816.00	-620.97	10739.00	0.00	10756.94

Targets								
Name	MD (ft)	TVD (ft)	Local N (ft)	Local E (ft)	Grid East (US ft)	Grid North (US ft)	Latitude	Longitude
OGDP 1 SEC.07-T06N-R64W	N/A	1.00	-0.77	-75.08	3254380.72	1428262.61	40°30'19.3680"N	104°35'6.7200"W
OGDP 1 SEC.08-T06N-R64W	N/A	1.00	-0.77	-75.08	3254380.72	1428262.61	40°30'19.3680"N	104°35'6.7200"W
OGDP 1 SEC.09-T06N-R64W	N/A	1.00	-0.77	-75.08	3254380.72	1428262.61	40°30'19.3680"N	104°35'6.7200"W
BISHOP A08-665 BHL Rev-1 (1665°FSL & 200°FWL,SEC.09)	17432.05	6816.00	-620.97	10739.00	3265194.41	1427642.44	40°30'12.1141"N	104°32'46.8200"W
BISHOP A08-665 LP Rev-1 (1656°FNL & 200°FWL,SEC.08)	7247.18	6816.00	-782.08	555.41	3255011.18	1427481.34	40°30'11.5836"N	104°34'58.6630"W





Planned Wellpath Report
BISHOP A08-665 (REV-A.0) PWP
Page 1 of 7



REFERENCE WELLPATH IDENTIFICATION			
Operator	NOBLE ENERGY, INC	Well	BISHOP A08-665
Field	WELD COUNTY (NOBLE NAD 83 GRID)	API/Legal	
Facility	SEC.07-T06N-R64W	Wellbore	BISHOP A08-665 PWB
Slot	SLOT#03 BISHOP A08-665 (862'FNL & 349'FEL,SEC.07)		

REPORT SETUP INFORMATION			
Projection System	NAD83 / Lambert Colorado SP, Northern Zone (501), US feet	Software System	WellArchitect® 6.0
North Reference	Grid	User	Guenaler
Scale	0.999967	Report Generated	1/13/2023 at 1:39:59 PM
Convergence at slot	0.59° East	Database	WA_Denver

WELLPATH LOCATION						
	Local coordinates		Grid coordinates		Geographic coordinates	
	North[ft]	East[ft]	Easting[US ft]	Northing[US ft]	Latitude	Longitude
Slot Location	0.77	75.08	3254455.79	1428263.39	40.5053800°	-104.5849300°
Facility Reference Pt			3254380.72	1428262.61	40.5053800°	-104.5852000°
Field Reference Pt			3000000.00	4454105.15	48.7761986°	-105.5000000°

WELLPATH DATUM			
Calculation method	Minimum curvature	(4743'GL+30'KB@4773'RKB) (RKB) to Facility Vertical Datum	4773.00ft
Horizontal Reference Pt	Slot	(4743'GL+30'KB@4773'RKB) (RKB) to Mean Sea Level	4773.00ft
Vertical Reference Pt	(4743'GL+30'KB@4773'RKB) (RKB)	(4743'GL+30'KB@4773'RKB) (RKB) to Ground Level at Slot (SLOT#03 BISHOP A08-665 (862'FNL & 349'FEL,SEC.07))	4773.00ft
MD Reference Pt	(4743'GL+30'KB@4773'RKB) (RKB)	Section Origin	N 0.00, E 0.00 ft
Field Vertical Reference	Mean Sea Level	Section Azimuth	93.31°



Planned Wellpath Report
BISHOP A08-665 (REV-A.0) PWP
Page 2 of 7



REFERENCE WELLPATH IDENTIFICATION			
Operator	NOBLE ENERGY, INC	Well	BISHOP A08-665
Field	WELD COUNTY (NOBLE NAD 83 GRID)	API/Legal	
Facility	SEC.07-T06N-R64W	Wellbore	BISHOP A08-665 PWB
Slot	SLOT#03 BISHOP A08-665 (862'FNL & 349'FEL,SEC.07)		

WELLPATH DATA (181 stations) † = interpolated, ‡ = extrapolated station										
MD [ft]	Inclination [°]	Azimuth [°]	TVD [ft]	Vert Sect [ft]	North [ft]	East [ft]	Latitude	Longitude	DLS [°/100ft]	Comments
0.00†	0.000	186.925	0.00	0.00	0.00	0.00	40.5053800	-104.5849300	0.00	
30.00	0.000	186.925	30.00	0.00	0.00	0.00	40.5053800	-104.5849300	0.00	SHL
130.00†	0.000	186.925	130.00	0.00	0.00	0.00	40.5053800	-104.5849300	0.00	
230.00†	0.000	186.925	230.00	0.00	0.00	0.00	40.5053800	-104.5849300	0.00	
330.00†	0.000	186.925	330.00	0.00	0.00	0.00	40.5053800	-104.5849300	0.00	
430.00†	0.000	186.925	430.00	0.00	0.00	0.00	40.5053800	-104.5849300	0.00	
530.00†	0.000	186.925	530.00	0.00	0.00	0.00	40.5053800	-104.5849300	0.00	
630.00†	0.000	186.925	630.00	0.00	0.00	0.00	40.5053800	-104.5849300	0.00	
730.00†	0.000	186.925	730.00	0.00	0.00	0.00	40.5053800	-104.5849300	0.00	
830.00†	0.000	186.925	830.00	0.00	0.00	0.00	40.5053800	-104.5849300	0.00	
930.00†	0.000	186.925	930.00	0.00	0.00	0.00	40.5053800	-104.5849300	0.00	
1030.00†	0.000	186.925	1030.00	0.00	0.00	0.00	40.5053800	-104.5849300	0.00	
1130.00†	0.000	186.925	1130.00	0.00	0.00	0.00	40.5053800	-104.5849300	0.00	
1230.00†	0.000	186.925	1230.00	0.00	0.00	0.00	40.5053800	-104.5849300	0.00	
1330.00†	0.000	186.925	1330.00	0.00	0.00	0.00	40.5053800	-104.5849300	0.00	
1430.00†	0.000	186.925	1430.00	0.00	0.00	0.00	40.5053800	-104.5849300	0.00	
1530.00†	0.000	186.925	1530.00	0.00	0.00	0.00	40.5053800	-104.5849300	0.00	
1630.00†	0.000	186.925	1630.00	0.00	0.00	0.00	40.5053800	-104.5849300	0.00	
1730.00†	0.000	186.925	1730.00	0.00	0.00	0.00	40.5053800	-104.5849300	0.00	
1830.00†	0.000	186.925	1830.00	0.00	0.00	0.00	40.5053800	-104.5849300	0.00	
1930.00†	0.000	186.925	1930.00	0.00	0.00	0.00	40.5053800	-104.5849300	0.00	
2000.00	0.000	186.925	2000.00	0.00	0.00	0.00	40.5053800	-104.5849300	0.00	End of Tangent
2030.00†	0.600	186.925	2030.00	-0.01	-0.16	-0.02	40.5053796	-104.5849301	2.00	
2130.00†	2.600	186.925	2129.96	-0.19	-2.93	-0.36	40.5053720	-104.5849314	2.00	
2230.00†	4.600	186.925	2229.75	-0.58	-9.16	-1.11	40.5053549	-104.5849343	2.00	
2330.00†	6.600	186.925	2329.27	-1.20	-18.85	-2.29	40.5053283	-104.5849389	2.00	
2430.00†	8.600	186.925	2428.39	-2.03	-31.98	-3.88	40.5052923	-104.5849452	2.00	
2495.63	9.913	186.925	2493.17	-2.70	-42.46	-5.16	40.5052636	-104.5849501	2.00	End of Build (XS)
2530.00†	9.913	186.925	2527.02	-3.07	-48.33	-5.87	40.5052475	-104.5849529	0.00	
2630.00†	9.913	186.925	2625.53	-4.16	-65.42	-7.95	40.5052007	-104.5849610	0.00	
2730.00†	9.913	186.925	2724.03	-5.24	-82.51	-10.02	40.5051538	-104.5849691	0.00	
2830.00†	9.913	186.925	2822.54	-6.33	-99.60	-12.10	40.5051070	-104.5849772	0.00	
2930.00†	9.913	186.925	2921.05	-7.41	-116.69	-14.17	40.5050601	-104.5849853	0.00	
3030.00†	9.913	186.925	3019.55	-8.50	-133.77	-16.25	40.5050133	-104.5849934	0.00	
3130.00†	9.913	186.925	3118.06	-9.58	-150.86	-18.32	40.5049664	-104.5850015	0.00	
3230.00†	9.913	186.925	3216.57	-10.67	-167.95	-20.40	40.5049196	-104.5850096	0.00	
3330.00†	9.913	186.925	3315.08	-11.76	-185.04	-22.48	40.5048728	-104.5850177	0.00	
3430.00†	9.913	186.925	3413.58	-12.84	-202.13	-24.55	40.5048259	-104.5850258	0.00	
3530.00†	9.913	186.925	3512.09	-13.93	-219.22	-26.63	40.5047791	-104.5850339	0.00	
3630.00†	9.913	186.925	3610.60	-15.01	-236.31	-28.70	40.5047322	-104.5850420	0.00	
3730.00†	9.913	186.925	3709.10	-16.10	-253.40	-30.78	40.5046854	-104.5850501	0.00	
3830.00†	9.913	186.925	3807.61	-17.18	-270.49	-32.85	40.5046385	-104.5850582	0.00	
3930.00†	9.913	186.925	3906.12	-18.27	-287.58	-34.93	40.5045917	-104.5850663	0.00	
4030.00†	9.913	186.925	4004.62	-19.36	-304.67	-37.01	40.5045448	-104.5850744	0.00	
4130.00†	9.913	186.925	4103.13	-20.44	-321.75	-39.08	40.5044980	-104.5850825	0.00	



Planned Wellpath Report
BISHOP A08-665 (REV-A.0) PWP
Page 3 of 7



REFERENCE WELLPATH IDENTIFICATION			
Operator	NOBLE ENERGY, INC	Well	BISHOP A08-665
Field	WELD COUNTY (NOBLE NAD 83 GRID)	API/Legal	
Facility	SEC.07-T06N-R64W	Wellbore	BISHOP A08-665 PWB
Slot	SLOT#03 BISHOP A08-665 (862'FNL & 349'FEL,SEC.07)		

WELLPATH DATA (181 stations) † = interpolated, ‡ = extrapolated station										
MD [ft]	Inclination [°]	Azimuth [°]	TVD [ft]	Vert Sect [ft]	North [ft]	East [ft]	Latitude	Longitude	DLS [°/100ft]	Comments
4230.00†	9.913	186.925	4201.64	-21.53	-338.84	-41.16	40.5044511	-104.5850906	0.00	
4330.00†	9.913	186.925	4300.15	-22.61	-355.93	-43.23	40.5044043	-104.5850987	0.00	
4430.00†	9.913	186.925	4398.65	-23.70	-373.02	-45.31	40.5043574	-104.5851068	0.00	
4530.00†	9.913	186.925	4497.16	-24.78	-390.11	-47.38	40.5043106	-104.5851149	0.00	
4630.00†	9.913	186.925	4595.67	-25.87	-407.20	-49.46	40.5042638	-104.5851230	0.00	
4730.00†	9.913	186.925	4694.17	-26.96	-424.29	-51.53	40.5042169	-104.5851311	0.00	
4830.00†	9.913	186.925	4792.68	-28.04	-441.38	-53.61	40.5041701	-104.5851391	0.00	
4930.00†	9.913	186.925	4891.19	-29.13	-458.47	-55.69	40.5041232	-104.5851472	0.00	
5030.00†	9.913	186.925	4989.70	-30.21	-475.56	-57.76	40.5040764	-104.5851553	0.00	
5130.00†	9.913	186.925	5088.20	-31.30	-492.65	-59.84	40.5040295	-104.5851634	0.00	
5230.00†	9.913	186.925	5186.71	-32.38	-509.74	-61.91	40.5039827	-104.5851715	0.00	
5330.00†	9.913	186.925	5285.22	-33.47	-526.82	-63.99	40.5039358	-104.5851796	0.00	
5430.00†	9.913	186.925	5383.72	-34.56	-543.91	-66.06	40.5038890	-104.5851877	0.00	
5530.00†	9.913	186.925	5482.23	-35.64	-561.00	-68.14	40.5038421	-104.5851958	0.00	
5630.00†	9.913	186.925	5580.74	-36.73	-578.09	-70.22	40.5037953	-104.5852039	0.00	
5730.00†	9.913	186.925	5679.25	-37.81	-595.18	-72.29	40.5037485	-104.5852120	0.00	
5830.00†	9.913	186.925	5777.75	-38.90	-612.27	-74.37	40.5037016	-104.5852201	0.00	
5930.00†	9.913	186.925	5876.26	-39.98	-629.36	-76.44	40.5036548	-104.5852282	0.00	
6030.00†	9.913	186.925	5974.77	-41.07	-646.45	-78.52	40.5036079	-104.5852363	0.00	
6130.00†	9.913	186.925	6073.27	-42.16	-663.54	-80.59	40.5035611	-104.5852444	0.00	
6230.00†	9.913	186.925	6171.78	-43.24	-680.63	-82.67	40.5035142	-104.5852525	0.00	
6232.25	9.913	186.925	6174.00	-43.27	-681.01	-82.72	40.5035132	-104.5852527	0.00	KOP
6330.00†	12.308	141.609	6270.08	-36.85	-697.56	-77.25	40.5034676	-104.5852337	9.00	
6430.00†	19.092	119.105	6366.38	-14.99	-713.90	-56.30	40.5034221	-104.5851589	9.00	
6530.00†	27.164	108.811	6458.31	21.80	-729.25	-20.33	40.5033790	-104.5850302	9.00	
6630.00†	35.659	103.057	6543.59	72.63	-743.23	29.78	40.5033392	-104.5848505	9.00	
6730.00†	44.333	99.301	6620.14	136.24	-755.48	92.78	40.5033038	-104.5846244	9.00	
6830.00†	53.096	96.564	6686.06	211.06	-765.72	167.14	40.5032736	-104.5843574	9.00	
6930.00†	61.909	94.396	6739.74	295.26	-773.69	251.01	40.5032493	-104.5840561	9.00	
7030.00†	70.751	92.560	6779.85	386.75	-779.19	342.34	40.5032317	-104.5837280	9.00	
7130.00†	79.610	90.913	6805.40	483.28	-782.09	438.87	40.5032210	-104.5833810	9.00	
7230.00†	88.476	89.358	6815.77	582.49	-782.31	538.23	40.5032175	-104.5830237	9.00	
7247.18	90.000	89.094	6816.00†	599.63	-782.08	555.41	40.5032177	-104.5829620	9.00	LP/TPZ
7330.00†	90.000	89.094	6816.00	682.22	-780.77	638.21	40.5032189	-104.5826642	0.00	
7430.00†	90.000	89.094	6816.00	781.95	-779.19	738.20	40.5032204	-104.5823046	0.00	
7530.00†	90.000	89.094	6816.00	881.68	-777.60	838.19	40.5032219	-104.5819450	0.00	
7630.00†	90.000	89.094	6816.00	981.41	-776.02	938.17	40.5032234	-104.5815854	0.00	
7730.00†	90.000	89.094	6816.00	1081.14	-774.44	1038.16	40.5032249	-104.5812258	0.00	
7830.00†	90.000	89.094	6816.00	1180.87	-772.86	1138.15	40.5032264	-104.5808662	0.00	
7930.00†	90.000	89.094	6816.00	1280.60	-771.28	1238.14	40.5032279	-104.5805067	0.00	
8030.00†	90.000	89.094	6816.00	1380.33	-769.69	1338.12	40.5032294	-104.5801471	0.00	
8130.00†	90.000	89.094	6816.00	1480.06	-768.11	1438.11	40.5032309	-104.5797875	0.00	
8230.00†	90.000	89.094	6816.00	1579.78	-766.53	1538.10	40.5032324	-104.5794279	0.00	
8330.00†	90.000	89.094	6816.00	1679.51	-764.95	1638.09	40.5032339	-104.5790683	0.00	
8430.00†	90.000	89.094	6816.00	1779.24	-763.37	1738.07	40.5032354	-104.5787088	0.00	



Planned Wellpath Report
BISHOP A08-665 (REV-A.0) PWP
Page 4 of 7



REFERENCE WELLPATH IDENTIFICATION			
Operator	NOBLE ENERGY, INC	Well	BISHOP A08-665
Field	WELD COUNTY (NOBLE NAD 83 GRID)	API/Legal	
Facility	SEC.07-T06N-R64W	Wellbore	BISHOP A08-665 PWB
Slot	SLOT#03 BISHOP A08-665 (862'FNL & 349'FEL,SEC.07)		

WELLPATH DATA (181 stations) † = interpolated, ‡ = extrapolated station											
MD [ft]	Inclination [°]	Azimuth [°]	TVD [ft]	Vert Sect [ft]	North [ft]	East [ft]	Latitude	Longitude	DLS [°/100ft]	Comments	
8530.00†	90.000	89.094	6816.00	1878.97	-761.79	1838.06	40.5032369	-104.5783492	0.00		
8630.00†	90.000	89.094	6816.00	1978.70	-760.20	1938.05	40.5032384	-104.5779896	0.00		
8730.00†	90.000	89.094	6816.00	2078.43	-758.62	2038.04	40.5032399	-104.5776300	0.00		
8830.00†	90.000	89.094	6816.00	2178.16	-757.04	2138.02	40.5032413	-104.5772704	0.00		
8930.00†	90.000	89.094	6816.00	2277.89	-755.46	2238.01	40.5032428	-104.5769108	0.00		
9030.00†	90.000	89.094	6816.00	2377.62	-753.88	2338.00	40.5032443	-104.5765513	0.00		
9130.00†	90.000	89.094	6816.00	2477.35	-752.29	2437.99	40.5032458	-104.5761917	0.00		
9230.00†	90.000	89.094	6816.00	2577.08	-750.71	2537.97	40.5032473	-104.5758321	0.00		
9330.00†	90.000	89.094	6816.00	2676.81	-749.13	2637.96	40.5032488	-104.5754725	0.00		
9430.00†	90.000	89.094	6816.00	2776.54	-747.55	2737.95	40.5032502	-104.5751129	0.00		
9530.00†	90.000	89.094	6816.00	2876.27	-745.97	2837.94	40.5032517	-104.5747533	0.00		
9630.00†	90.000	89.094	6816.00	2976.00	-744.39	2937.92	40.5032532	-104.5743938	0.00		
9730.00†	90.000	89.094	6816.00	3075.73	-742.80	3037.91	40.5032547	-104.5740342	0.00		
9830.00†	90.000	89.094	6816.00	3175.46	-741.22	3137.90	40.5032561	-104.5736746	0.00		
9930.00†	90.000	89.094	6816.00	3275.18	-739.64	3237.89	40.5032576	-104.5733150	0.00		
10030.00†	90.000	89.094	6816.00	3374.91	-738.06	3337.87	40.5032591	-104.5729554	0.00		
10130.00†	90.000	89.094	6816.00	3474.64	-736.48	3437.86	40.5032606	-104.5725958	0.00		
10230.00†	90.000	89.094	6816.00	3574.37	-734.90	3537.85	40.5032620	-104.5722363	0.00		
10330.00†	90.000	89.094	6816.00	3674.10	-733.31	3637.84	40.5032635	-104.5718767	0.00		
10430.00†	90.000	89.094	6816.00	3773.83	-731.73	3737.82	40.5032650	-104.5715171	0.00		
10530.00†	90.000	89.094	6816.00	3873.56	-730.15	3837.81	40.5032664	-104.5711575	0.00		
10630.00†	90.000	89.094	6816.00	3973.29	-728.57	3937.80	40.5032679	-104.5707979	0.00		
10730.00†	90.000	89.094	6816.00	4073.02	-726.99	4037.79	40.5032694	-104.5704383	0.00		
10830.00†	90.000	89.094	6816.00	4172.75	-725.40	4137.77	40.5032708	-104.5700788	0.00		
10930.00†	90.000	89.094	6816.00	4272.48	-723.82	4237.76	40.5032723	-104.5697192	0.00		
11030.00†	90.000	89.094	6816.00	4372.21	-722.24	4337.75	40.5032738	-104.5693596	0.00		
11130.00†	90.000	89.094	6816.00	4471.94	-720.66	4437.74	40.5032752	-104.5690000	0.00		
11230.00†	90.000	89.094	6816.00	4571.67	-719.08	4537.72	40.5032767	-104.5686404	0.00		
11330.00†	90.000	89.094	6816.00	4671.40	-717.50	4637.71	40.5032781	-104.5682808	0.00		
11430.00†	90.000	89.094	6816.00	4771.13	-715.91	4737.70	40.5032796	-104.5679213	0.00		
11530.00†	90.000	89.094	6816.00	4870.86	-714.33	4837.69	40.5032810	-104.5675617	0.00		
11630.00†	90.000	89.094	6816.00	4970.59	-712.75	4937.67	40.5032825	-104.5672021	0.00		
11730.00†	90.000	89.094	6816.00	5070.31	-711.17	5037.66	40.5032840	-104.5668425	0.00		
11830.00†	90.000	89.094	6816.00	5170.04	-709.59	5137.65	40.5032854	-104.5664829	0.00		
11930.00†	90.000	89.094	6816.00	5269.77	-708.00	5237.64	40.5032869	-104.5661233	0.00		
12030.00†	90.000	89.094	6816.00	5369.50	-706.42	5337.62	40.5032883	-104.5657638	0.00		
12130.00†	90.000	89.094	6816.00	5469.23	-704.84	5437.61	40.5032898	-104.5654042	0.00		
12230.00†	90.000	89.094	6816.00	5568.96	-703.26	5537.60	40.5032912	-104.5650446	0.00		
12330.00†	90.000	89.094	6816.00	5668.69	-701.68	5637.59	40.5032927	-104.5646850	0.00		
12430.00†	90.000	89.094	6816.00	5768.42	-700.10	5737.57	40.5032941	-104.5643254	0.00		
12530.00†	90.000	89.094	6816.00	5868.15	-698.51	5837.56	40.5032955	-104.5639658	0.00		
12630.00†	90.000	89.094	6816.00	5967.88	-696.93	5937.55	40.5032970	-104.5636063	0.00		
12730.00†	90.000	89.094	6816.00	6067.61	-695.35	6037.54	40.5032984	-104.5632467	0.00		
12830.00†	90.000	89.094	6816.00	6167.34	-693.77	6137.52	40.5032999	-104.5628871	0.00		
12930.00†	90.000	89.094	6816.00	6267.07	-692.19	6237.51	40.5033013	-104.5625275	0.00		



Planned Wellpath Report
BISHOP A08-665 (REV-A.0) PWP
Page 5 of 7



REFERENCE WELLPATH IDENTIFICATION			
Operator	NOBLE ENERGY, INC	Well	BISHOP A08-665
Field	WELD COUNTY (NOBLE NAD 83 GRID)	API/Legal	
Facility	SEC.07-T06N-R64W	Wellbore	BISHOP A08-665 PWB
Slot	SLOT#03 BISHOP A08-665 (862'FNL & 349'FEL,SEC.07)		

WELLPATH DATA (181 stations) † = interpolated, ‡ = extrapolated station										
MD [ft]	Inclination [°]	Azimuth [°]	TVD [ft]	Vert Sect [ft]	North [ft]	East [ft]	Latitude	Longitude	DLS [°/100ft]	Comments
13030.00†	90.000	89.094	6816.00	6366.80	-690.60	6337.50	40.5033028	-104.5621679	0.00	
13130.00†	90.000	89.094	6816.00	6466.53	-689.02	6437.49	40.5033042	-104.5618083	0.00	
13230.00†	90.000	89.094	6816.00	6566.26	-687.44	6537.47	40.5033056	-104.5614488	0.00	
13330.00†	90.000	89.094	6816.00	6665.99	-685.86	6637.46	40.5033071	-104.5610892	0.00	
13430.00†	90.000	89.094	6816.00	6765.72	-684.28	6737.45	40.5033085	-104.5607296	0.00	
13530.00†	90.000	89.094	6816.00	6865.44	-682.70	6837.44	40.5033099	-104.5603700	0.00	
13630.00†	90.000	89.094	6816.00	6965.17	-681.11	6937.42	40.5033114	-104.5600104	0.00	
13730.00†	90.000	89.094	6816.00	7064.90	-679.53	7037.41	40.5033128	-104.5596508	0.00	
13830.00†	90.000	89.094	6816.00	7164.63	-677.95	7137.40	40.5033142	-104.5592913	0.00	
13930.00†	90.000	89.094	6816.00	7264.36	-676.37	7237.39	40.5033157	-104.5589317	0.00	
14030.00†	90.000	89.094	6816.00	7364.09	-674.79	7337.37	40.5033171	-104.5585721	0.00	
14130.00†	90.000	89.094	6816.00	7463.82	-673.20	7437.36	40.5033185	-104.5582125	0.00	
14230.00†	90.000	89.094	6816.00	7563.55	-671.62	7537.35	40.5033199	-104.5578529	0.00	
14330.00†	90.000	89.094	6816.00	7663.28	-670.04	7637.34	40.5033214	-104.5574933	0.00	
14430.00†	90.000	89.094	6816.00	7763.01	-668.46	7737.32	40.5033228	-104.5571338	0.00	
14530.00†	90.000	89.094	6816.00	7862.74	-666.88	7837.31	40.5033242	-104.5567742	0.00	
14630.00†	90.000	89.094	6816.00	7962.47	-665.30	7937.30	40.5033256	-104.5564146	0.00	
14730.00†	90.000	89.094	6816.00	8062.20	-663.71	8037.29	40.5033271	-104.5560550	0.00	
14830.00†	90.000	89.094	6816.00	8161.93	-662.13	8137.27	40.5033285	-104.5556954	0.00	
14930.00†	90.000	89.094	6816.00	8261.66	-660.55	8237.26	40.5033299	-104.5553358	0.00	
15030.00†	90.000	89.094	6816.00	8361.39	-658.97	8337.25	40.5033313	-104.5549763	0.00	
15130.00†	90.000	89.094	6816.00	8461.12	-657.39	8437.24	40.5033327	-104.5546167	0.00	
15230.00†	90.000	89.094	6816.00	8560.84	-655.80	8537.22	40.5033341	-104.5542571	0.00	
15330.00†	90.000	89.094	6816.00	8660.57	-654.22	8637.21	40.5033356	-104.5538975	0.00	
15430.00†	90.000	89.094	6816.00	8760.30	-652.64	8737.20	40.5033370	-104.5535379	0.00	
15530.00†	90.000	89.094	6816.00	8860.03	-651.06	8837.19	40.5033384	-104.5531783	0.00	
15630.00†	90.000	89.094	6816.00	8959.76	-649.48	8937.17	40.5033398	-104.5528188	0.00	
15730.00†	90.000	89.094	6816.00	9059.49	-647.90	9037.16	40.5033412	-104.5524592	0.00	
15830.00†	90.000	89.094	6816.00	9159.22	-646.31	9137.15	40.5033426	-104.5520996	0.00	
15930.00†	90.000	89.094	6816.00	9258.95	-644.73	9237.14	40.5033440	-104.5517400	0.00	
16030.00†	90.000	89.094	6816.00	9358.68	-643.15	9337.12	40.5033454	-104.5513804	0.00	
16130.00†	90.000	89.094	6816.00	9458.41	-641.57	9437.11	40.5033468	-104.5510208	0.00	
16230.00†	90.000	89.094	6816.00	9558.14	-639.99	9537.10	40.5033482	-104.5506613	0.00	
16330.00†	90.000	89.094	6816.00	9657.87	-638.40	9637.09	40.5033496	-104.5503017	0.00	
16430.00†	90.000	89.094	6816.00	9757.60	-636.82	9737.07	40.5033510	-104.5499421	0.00	
16530.00†	90.000	89.094	6816.00	9857.33	-635.24	9837.06	40.5033524	-104.5495825	0.00	
16630.00†	90.000	89.094	6816.00	9957.06	-633.66	9937.05	40.5033538	-104.5492229	0.00	
16730.00†	90.000	89.094	6816.00	10056.79	-632.08	10037.04	40.5033552	-104.5488633	0.00	
16830.00†	90.000	89.094	6816.00	10156.52	-630.50	10137.02	40.5033566	-104.5485038	0.00	
16930.00†	90.000	89.094	6816.00	10256.25	-628.91	10237.01	40.5033580	-104.5481442	0.00	
17030.00†	90.000	89.094	6816.00	10355.97	-627.33	10337.00	40.5033594	-104.5477846	0.00	
17130.00†	90.000	89.094	6816.00	10455.70	-625.75	10436.99	40.5033608	-104.5474250	0.00	
17230.00†	90.000	89.094	6816.00	10555.43	-624.17	10536.97	40.5033622	-104.5470654	0.00	
17330.00†	90.000	89.094	6816.00	10655.16	-622.59	10636.96	40.5033636	-104.5467058	0.00	
17430.00†	90.000	89.094	6816.00	10754.89	-621.00	10736.95	40.5033650	-104.5463462	0.00	



Planned Wellpath Report
BISHOP A08-665 (REV-A.0) PWP
Page 6 of 7



REFERENCE WELLPATH IDENTIFICATION			
Operator	NOBLE ENERGY, INC	Well	BISHOP A08-665
Field	WELD COUNTY (NOBLE NAD 83 GRID)	API/Legal	
Facility	SEC.07-T06N-R64W	Wellbore	BISHOP A08-665 PWB
Slot	SLOT#03 BISHOP A08-665 (862'FNL & 349'FEL,SEC.07)		

WELLPATH DATA (181 stations)										
MD [ft]	Inclination [°]	Azimuth [°]	TVD [ft]	Vert Sect [ft]	North [ft]	East [ft]	Latitude	Longitude	DLS [°/100ft]	Comments
17432.05	90.000	89.094	6816.00 ²	10756.94	-620.97	10739.00	40.5033650	-104.5463389	0.00	BHL

HOLE & CASING SECTIONS - Ref Wellbore: BISHOP A08-665 PWB Ref Wellpath: BISHOP A08-665 (REV-A.0) PWP										
String/Diameter	Start MD [ft]	End MD [ft]	Interval [ft]	Start TVD [ft]	End TVD [ft]	Start N/S [ft]	Start E/W [ft]	End N/S [ft]	End E/W [ft]	
9.625in Casing Surface	30.00	1950.00	1920.00	30.00	1950.00	0.00	0.00	0.00	0.00	

TARGETS										
Name	MD [ft]	TVD [ft]	North [ft]	East [ft]	Grid East [US ft]	Grid North [US ft]	Latitude	Longitude	Shape	
OGDP 1 SEC.07-T06N-R64W	N/A	1.00	-0.77	-75.08	3254380.72	1428262.61	40.5053800	-104.5852000	polygon	
	2D Polygon: dimensions not calculated									
OGDP 1 SEC.08-T06N-R64W	N/A	1.00	-0.77	-75.08	3254380.72	1428262.61	40.5053800	-104.5852000	polygon	
	2D Polygon: dimensions not calculated									
OGDP 1 SEC.09-T06N-R64W	N/A	1.00	-0.77	-75.08	3254380.72	1428262.61	40.5053800	-104.5852000	polygon	
	2D Polygon: dimensions not calculated									
2) BISHOP A08-665 BHL Rev-1 (1665'FSL & 200'FEL,SEC.09)	17432.05	6816.00	-620.97	10739.00	3265194.41	1427642.44	40.5033650	-104.5463389	point	
1) BISHOP A08-665 LP Rev-1 (1656'FNL & 200'FWL,SEC.08)	7247.18	6816.00	-782.08	555.41	3255011.18	1427481.34	40.5032177	-104.5829620	point	

SURVEY PROGRAM - Ref Wellbore: BISHOP A08-665 PWB Ref Wellpath: BISHOP A08-665 (REV-A.0) PWP				
Start MD [ft]	End MD [ft]	Positional Uncertainty Model	Log Name/Comment	Wellbore
30.00	17432.05	OWSG MWD rev2 (MS+IFR1)		BISHOP A08-665 PWB



Planned Wellpath Report

BISHOP A08-665 (REV-A.0) PWP

Page 7 of 7



REFERENCE WELLPATH IDENTIFICATION			
Operator	NOBLE ENERGY, INC	Well	BISHOP A08-665
Field	WELD COUNTY (NOBLE NAD 83 GRID)	API/Legal	
Facility	SEC.07-T06N-R64W	Wellbore	BISHOP A08-665 PWB
Slot	SLOT#03 BISHOP A08-665 (862'FNL & 349'FEL,SEC.07)		

DESIGN COMMENTS				
MD [ft]	Inclination [°]	Azimuth [°]	TVD [ft]	Comment
30.00	0.000	186.925	30.00	SHL
2000.00	0.000	186.925	2000.00	End of Tangent
2495.63	9.913	186.925	2493.17	End of Build (XS)
6232.25	9.913	186.925	6174.00	KOP
7247.18	90.000	89.094	6816.00	LP/TPZ
17432.05	90.000	89.094	6816.00	BHL