

NOBLE ENERGY, INC

Location:	COLORADO	Slot:	SLOT#02 BISHOP A08-675 (861°FNL & 387°FEL,SEC.07)
Field:	WELD COUNTY (NOBLE NAD 83 GRID)	Well:	BISHOP A08-675
Facility:	SEC.07-T06N-R64W	Wellbore:	BISHOP A08-675 PWB

Plot reference wellpath is BISHOP A08-675 (REV-A.0) PWP	Grid System: NAD83 / Lambert Colorado SP, Northern Zone (501), US feet
True vertical depths are referenced to (4742 GL+30KB@4772 RKB) (RKB)	North Reference: Grid north
Reference wellpath measured depths are referenced to (4742 GL+30KB@4772 RKB) (RKB)	Scale: True distance
(4742 GL+30KB@4772 RKB) (RKB) to Mean Sea Level: 4772 feet	Coordinates are in feet referenced to Slot
Mean Sea Level to Ground level (At Slot: SLOT#02 BISHOP A08-675 (861°FNL & 387°FEL,SEC.07)): 0 feet	Depths are in feet
Offset wellpath MDs are referenced to each path's default MD datum	Created by: guenaler on 2023-01-13; Database: WA, Denver

Location Information					
Facility Name		Grid East (US ft)	Grid North (US ft)	Latitude	Longitude
SEC.07-T06N-R64W		3254380.716	1428262.611	40°30'19.3680"N	104°35'6.7200"W
Slot	Local N (ft)	Local E (ft)	Grid East (US ft)	Grid North (US ft)	Latitude
SLOT#02 BISHOP A08-675 (861°FNL & 387°FEL,SEC.07)	0.37	36.15	3254416.864	1428262.984	40°30'19.3680"N
(4742 GL+30KB@4772 RKB) (RKB) to Ground level (At Slot: SLOT#02 BISHOP A08-675 (861°FNL & 387°FEL,SEC.07))				4772ft	
Mean Sea Level to Ground level (At Slot: SLOT#02 BISHOP A08-675 (861°FNL & 387°FEL,SEC.07))				0ft	
(4742 GL+30KB@4772 RKB) (RKB) to Mean Sea Level				4772ft	

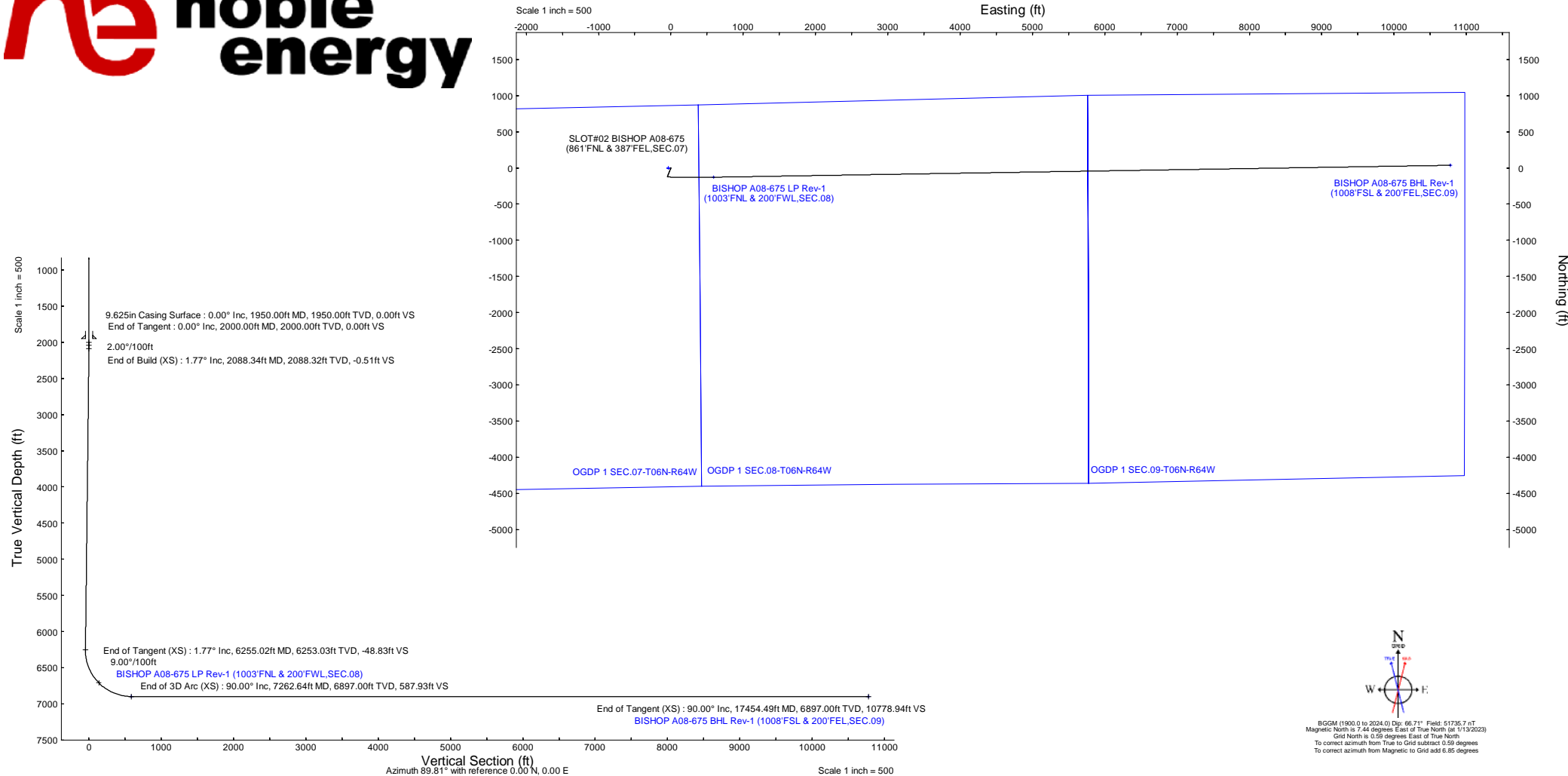
Survey Program					
Start MD (ft)	End MD (ft)	Tool	Model	Log Name/Comment	Wellbore
30.00	17454.49	OWSG MWD rev2	OWSG MWD rev2 (MS+IFR1)		BISHOP A08-675 PWB

Well Profile Data

Design Comment	MD (ft)	Inc (°)	Az (°)	TVD (ft)	Local N (ft)	Local E (ft)	DLS (°/100ft)	VS (ft)
Tie On	30.00	0.000	201.900	30.00	0.00	0.00	0.00	0.00
End of Tangent	2000.00	0.000	201.900	2000.00	0.00	0.00	0.00	0.00
End of Build (XS)	2088.34	1.767	201.900	2088.32	-1.26	-0.51	2.00	-0.51
End of Tangent (XS)	6255.02	1.767	201.900	6253.03	-120.46	-48.42	0.00	-48.83
End of 3D Arc (XS)	7262.64	90.000	89.073	6897.00	-128.46	588.36	9.00	587.93
End of Tangent (XS)	17454.49	90.000	89.073	6897.00	36.48	10778.88	0.00	10778.94

Targets

Name	MD (ft)	TVD (ft)	Local N (ft)	Local E (ft)	Grid East (US ft)	Grid North (US ft)	Latitude	Longitude
OGDP 1 SEC.07-T06N-R64W	N/A	0.00	-0.37	-36.15	3254380.72	1428262.61	40°30'19.3680"N	104°35'6.7200"W
OGDP 1 SEC.08-T06N-R64W	N/A	0.00	-0.37	-36.15	3254380.72	1428262.61	40°30'19.3680"N	104°35'6.7200"W
OGDP 1 SEC.09-T06N-R64W	N/A	0.00	-0.37	-36.15	3254380.72	1428262.61	40°30'19.3680"N	104°35'6.7200"W
BISHOP A08-675 BHL Rev-1 (1008°FSL & 200°FEL,SEC.09)	17454.49	6897.00	36.48	10778.88	3265195.37	1428299.47	40°30'18.6063"N	104°32'46.7161"W
BISHOP A08-675 LP Rev-1 (1003°FNL & 200°FWL,SEC.08)	7262.64	6897.00	-128.46	588.36	3255005.21	1428134.53	40°30'18.0386"N	104°34'58.6529"W





Planned Wellpath Report  
BISHOP A08-675 (REV-A.0) PWP  
Page 1 of 7



REFERENCE WELLPATH IDENTIFICATION			
Operator	NOBLE ENERGY, INC	Well	BISHOP A08-675
Field	WELD COUNTY (NOBLE NAD 83 GRID)	API/Legal	
Facility	SEC.07-T06N-R64W	Wellbore	BISHOP A08-675 PWB
Slot	SLOT#02 BISHOP A08-675 (861'FNL & 387'FEL,SEC.07)		

REPORT SETUP INFORMATION			
Projection System	NAD83 / Lambert Colorado SP, Northern Zone (501), US feet	Software System	WellArchitect® 6.0
North Reference	Grid	User	Guenaler
Scale	0.999967	Report Generated	1/13/2023 at 1:38:45 PM
Convergence at slot	0.59° East	Database	WA_Denver

WELLPATH LOCATION						
	Local coordinates		Grid coordinates		Geographic coordinates	
	North[ft]	East[ft]	Easting[US ft]	Northing[US ft]	Latitude	Longitude
Slot Location	0.37	36.15	3254416.86	1428262.98	40.5053800°	-104.5850700°
Facility Reference Pt			3254380.72	1428262.61	40.5053800°	-104.5852000°
Field Reference Pt			3000000.00	4454105.15	48.7761986°	-105.5000000°

WELLPATH DATUM			
Calculation method	Minimum curvature	(4742'GL+30'KB@4772'RKB) (RKB) to Facility Vertical Datum	4772.00ft
Horizontal Reference Pt	Slot	(4742'GL+30'KB@4772'RKB) (RKB) to Mean Sea Level	4772.00ft
Vertical Reference Pt	(4742'GL+30'KB@4772'RKB) (RKB)	(4742'GL+30'KB@4772'RKB) (RKB) to Ground Level at Slot (SLOT#02 BISHOP A08-675 (861'FNL & 387'FEL,SEC.07))	4772.00ft
MD Reference Pt	(4742'GL+30'KB@4772'RKB) (RKB)	Section Origin	N 0.00, E 0.00 ft
Field Vertical Reference	Mean Sea Level	Section Azimuth	89.81°



Planned Wellpath Report  
BISHOP A08-675 (REV-A.0) PWP  
Page 2 of 7



REFERENCE WELLPATH IDENTIFICATION			
Operator	NOBLE ENERGY, INC	Well	BISHOP A08-675
Field	WELD COUNTY (NOBLE NAD 83 GRID)	API/Legal	
Facility	SEC.07-T06N-R64W	Wellbore	BISHOP A08-675 PWB
Slot	SLOT#02 BISHOP A08-675 (861'FNL & 387'FEL,SEC.07)		

WELLPATH DATA (181 stations) † = interpolated, ‡ = extrapolated station										
MD [ft]	Inclination [°]	Azimuth [°]	TVD [ft]	Vert Sect [ft]	North [ft]	East [ft]	Latitude	Longitude	DLS [°/100ft]	Comments
0.00†	0.000	201.900	0.00	0.00	0.00	0.00	40.5053800	-104.5850700	0.00	
30.00	0.000	201.900	30.00	0.00	0.00	0.00	40.5053800	-104.5850700	0.00	Tie On
130.00†	0.000	201.900	130.00	0.00	0.00	0.00	40.5053800	-104.5850700	0.00	
230.00†	0.000	201.900	230.00	0.00	0.00	0.00	40.5053800	-104.5850700	0.00	
330.00†	0.000	201.900	330.00	0.00	0.00	0.00	40.5053800	-104.5850700	0.00	
430.00†	0.000	201.900	430.00	0.00	0.00	0.00	40.5053800	-104.5850700	0.00	
530.00†	0.000	201.900	530.00	0.00	0.00	0.00	40.5053800	-104.5850700	0.00	
630.00†	0.000	201.900	630.00	0.00	0.00	0.00	40.5053800	-104.5850700	0.00	
730.00†	0.000	201.900	730.00	0.00	0.00	0.00	40.5053800	-104.5850700	0.00	
830.00†	0.000	201.900	830.00	0.00	0.00	0.00	40.5053800	-104.5850700	0.00	
930.00†	0.000	201.900	930.00	0.00	0.00	0.00	40.5053800	-104.5850700	0.00	
1030.00†	0.000	201.900	1030.00	0.00	0.00	0.00	40.5053800	-104.5850700	0.00	
1130.00†	0.000	201.900	1130.00	0.00	0.00	0.00	40.5053800	-104.5850700	0.00	
1230.00†	0.000	201.900	1230.00	0.00	0.00	0.00	40.5053800	-104.5850700	0.00	
1330.00†	0.000	201.900	1330.00	0.00	0.00	0.00	40.5053800	-104.5850700	0.00	
1430.00†	0.000	201.900	1430.00	0.00	0.00	0.00	40.5053800	-104.5850700	0.00	
1530.00†	0.000	201.900	1530.00	0.00	0.00	0.00	40.5053800	-104.5850700	0.00	
1630.00†	0.000	201.900	1630.00	0.00	0.00	0.00	40.5053800	-104.5850700	0.00	
1730.00†	0.000	201.900	1730.00	0.00	0.00	0.00	40.5053800	-104.5850700	0.00	
1830.00†	0.000	201.900	1830.00	0.00	0.00	0.00	40.5053800	-104.5850700	0.00	
1930.00†	0.000	201.900	1930.00	0.00	0.00	0.00	40.5053800	-104.5850700	0.00	
2000.00	0.000	201.900	2000.00	0.00	0.00	0.00	40.5053800	-104.5850700	0.00	End of Tangent
2030.00†	0.600	201.900	2030.00	-0.06	-0.15	-0.06	40.5053796	-104.5850702	2.00	
2088.34	1.767	201.900	2088.32	-0.51	-1.26	-0.51	40.5053765	-104.5850719	2.00	End of Build (XS)
2130.00†	1.767	201.900	2129.97	-1.00	-2.46	-0.99	40.5053733	-104.5850736	0.00	
2230.00†	1.767	201.900	2229.92	-2.15	-5.32	-2.14	40.5053655	-104.5850779	0.00	
2330.00†	1.767	201.900	2329.87	-3.31	-8.18	-3.29	40.5053577	-104.5850821	0.00	
2430.00†	1.767	201.900	2429.82	-4.47	-11.04	-4.44	40.5053498	-104.5850864	0.00	
2530.00†	1.767	201.900	2529.78	-5.63	-13.90	-5.59	40.5053420	-104.5850906	0.00	
2630.00†	1.767	201.900	2629.73	-6.79	-16.76	-6.74	40.5053342	-104.5850948	0.00	
2730.00†	1.767	201.900	2729.68	-7.95	-19.62	-7.89	40.5053264	-104.5850991	0.00	
2830.00†	1.767	201.900	2829.63	-9.11	-22.48	-9.04	40.5053186	-104.5851033	0.00	
2930.00†	1.767	201.900	2929.59	-10.27	-25.34	-10.19	40.5053107	-104.5851076	0.00	
3030.00†	1.767	201.900	3029.54	-11.43	-28.20	-11.34	40.5053029	-104.5851118	0.00	
3130.00†	1.767	201.900	3129.49	-12.59	-31.06	-12.49	40.5052951	-104.5851161	0.00	
3230.00†	1.767	201.900	3229.44	-13.75	-33.92	-13.64	40.5052873	-104.5851203	0.00	
3330.00†	1.767	201.900	3329.40	-14.91	-36.78	-14.79	40.5052795	-104.5851245	0.00	
3430.00†	1.767	201.900	3429.35	-16.07	-39.64	-15.94	40.5052716	-104.5851288	0.00	
3530.00†	1.767	201.900	3529.30	-17.23	-42.50	-17.09	40.5052638	-104.5851330	0.00	
3630.00†	1.767	201.900	3629.25	-18.39	-45.36	-18.24	40.5052560	-104.5851373	0.00	
3730.00†	1.767	201.900	3729.21	-19.55	-48.23	-19.39	40.5052482	-104.5851415	0.00	
3830.00†	1.767	201.900	3829.16	-20.71	-51.09	-20.54	40.5052404	-104.5851457	0.00	
3930.00†	1.767	201.900	3929.11	-21.87	-53.95	-21.69	40.5052325	-104.5851500	0.00	
4030.00†	1.767	201.900	4029.06	-23.03	-56.81	-22.84	40.5052247	-104.5851542	0.00	
4130.00†	1.767	201.900	4129.02	-24.19	-59.67	-23.99	40.5052169	-104.5851585	0.00	



Planned Wellpath Report  
BISHOP A08-675 (REV-A.0) PWP  
Page 3 of 7



REFERENCE WELLPATH IDENTIFICATION			
Operator	NOBLE ENERGY, INC	Well	BISHOP A08-675
Field	WELD COUNTY (NOBLE NAD 83 GRID)	API/Legal	
Facility	SEC.07-T06N-R64W	Wellbore	BISHOP A08-675 PWB
Slot	SLOT#02 BISHOP A08-675 (861'FNL & 387'FEL,SEC.07)		

WELLPATH DATA (181 stations) † = interpolated, ‡ = extrapolated station										
MD [ft]	Inclination [°]	Azimuth [°]	TVD [ft]	Vert Sect [ft]	North [ft]	East [ft]	Latitude	Longitude	DLS [°/100ft]	Comments
4230.00†	1.767	201.900	4228.97	-25.35	-62.53	-25.14	40.5052091	-104.5851627	0.00	
4330.00†	1.767	201.900	4328.92	-26.51	-65.39	-26.29	40.5052013	-104.5851669	0.00	
4430.00†	1.767	201.900	4428.87	-27.67	-68.25	-27.44	40.5051935	-104.5851712	0.00	
4530.00†	1.767	201.900	4528.83	-28.83	-71.11	-28.59	40.5051856	-104.5851754	0.00	
4630.00†	1.767	201.900	4628.78	-29.99	-73.97	-29.74	40.5051778	-104.5851797	0.00	
4730.00†	1.767	201.900	4728.73	-31.15	-76.83	-30.89	40.5051700	-104.5851839	0.00	
4830.00†	1.767	201.900	4828.68	-32.31	-79.69	-32.04	40.5051622	-104.5851882	0.00	
4930.00†	1.767	201.900	4928.64	-33.46	-82.55	-33.19	40.5051544	-104.5851924	0.00	
5030.00†	1.767	201.900	5028.59	-34.62	-85.41	-34.34	40.5051465	-104.5851966	0.00	
5130.00†	1.767	201.900	5128.54	-35.78	-88.27	-35.49	40.5051387	-104.5852009	0.00	
5230.00†	1.767	201.900	5228.49	-36.94	-91.13	-36.64	40.5051309	-104.5852051	0.00	
5330.00†	1.767	201.900	5328.44	-38.10	-94.00	-37.79	40.5051231	-104.5852094	0.00	
5430.00†	1.767	201.900	5428.40	-39.26	-96.86	-38.94	40.5051153	-104.5852136	0.00	
5530.00†	1.767	201.900	5528.35	-40.42	-99.72	-40.09	40.5051074	-104.5852178	0.00	
5630.00†	1.767	201.900	5628.30	-41.58	-102.58	-41.24	40.5050996	-104.5852221	0.00	
5730.00†	1.767	201.900	5728.25	-42.74	-105.44	-42.39	40.5050918	-104.5852263	0.00	
5830.00†	1.767	201.900	5828.21	-43.90	-108.30	-43.54	40.5050840	-104.5852306	0.00	
5930.00†	1.767	201.900	5928.16	-45.06	-111.16	-44.69	40.5050762	-104.5852348	0.00	
6030.00†	1.767	201.900	6028.11	-46.22	-114.02	-45.84	40.5050683	-104.5852390	0.00	
6130.00†	1.767	201.900	6128.06	-47.38	-116.88	-46.99	40.5050605	-104.5852433	0.00	
6230.00†	1.767	201.900	6228.02	-48.54	-119.74	-48.14	40.5050527	-104.5852475	0.00	
6255.02	1.767	201.900	6253.03	-48.83	-120.46	-48.42	40.5050508	-104.5852486	0.00	End of Tangent (XS)
6330.00†	6.277	104.052	6327.85	-45.29	-122.53	-44.87	40.5050450	-104.5852359	9.00	
6430.00†	15.149	95.101	6426.01	-26.94	-125.02	-26.52	40.5050376	-104.5851700	9.00	
6530.00†	24.115	92.714	6520.11	6.54	-127.15	6.97	40.5050308	-104.5850497	9.00	
6630.00†	33.098	91.572	6607.81	54.33	-128.87	54.77	40.5050247	-104.5848778	9.00	
6730.00†	42.088	90.876	6686.97	115.26	-130.14	115.70	40.5050195	-104.5846588	9.00	
6830.00†	51.082	90.388	6755.62	187.81	-130.92	188.26	40.5050153	-104.5843979	9.00	
6930.00†	60.076	90.010	6812.09	270.22	-131.19	270.66	40.5050123	-104.5841016	9.00	
7030.00†	69.072	89.696	6854.98	360.44	-130.95	360.88	40.5050104	-104.5837772	9.00	
7130.00†	78.068	89.417	6883.24	456.25	-130.20	456.70	40.5050097	-104.5834326	9.00	
7230.00†	87.064	89.156	6896.16	555.31	-128.96	555.75	40.5050103	-104.5830764	9.00	
7262.64	90.000	89.073	6897.00†	587.93	-128.46	588.36	40.5050107	-104.5829591	9.00	End of 3D Arc (XS)
7330.00†	90.000	89.073	6897.00	655.29	-127.37	655.72	40.5050118	-104.5827169	0.00	
7430.00†	90.000	89.073	6897.00	755.28	-125.75	755.71	40.5050134	-104.5823573	0.00	
7530.00†	90.000	89.073	6897.00	855.27	-124.13	855.69	40.5050150	-104.5819977	0.00	
7630.00†	90.000	89.073	6897.00	955.26	-122.51	955.68	40.5050166	-104.5816381	0.00	
7730.00†	90.000	89.073	6897.00	1055.25	-120.90	1055.67	40.5050182	-104.5812785	0.00	
7830.00†	90.000	89.073	6897.00	1155.24	-119.28	1155.65	40.5050198	-104.5809189	0.00	
7930.00†	90.000	89.073	6897.00	1255.24	-117.66	1255.64	40.5050214	-104.5805594	0.00	
8030.00†	90.000	89.073	6897.00	1355.23	-116.04	1355.63	40.5050230	-104.5801998	0.00	
8130.00†	90.000	89.073	6897.00	1455.22	-114.42	1455.62	40.5050246	-104.5798402	0.00	
8230.00†	90.000	89.073	6897.00	1555.21	-112.80	1555.60	40.5050262	-104.5794806	0.00	
8330.00†	90.000	89.073	6897.00	1655.20	-111.19	1655.59	40.5050278	-104.5791210	0.00	
8430.00†	90.000	89.073	6897.00	1755.20	-109.57	1755.58	40.5050294	-104.5787614	0.00	



Planned Wellpath Report  
BISHOP A08-675 (REV-A.0) PWP  
Page 4 of 7



REFERENCE WELLPATH IDENTIFICATION			
Operator	NOBLE ENERGY, INC	Well	BISHOP A08-675
Field	WELD COUNTY (NOBLE NAD 83 GRID)	API/Legal	
Facility	SEC.07-T06N-R64W	Wellbore	BISHOP A08-675 PWB
Slot	SLOT#02 BISHOP A08-675 (861'FNL & 387'FEL,SEC.07)		

WELLPATH DATA (181 stations) † = interpolated, ‡ = extrapolated station											
MD [ft]	Inclination [°]	Azimuth [°]	TVD [ft]	Vert Sect [ft]	North [ft]	East [ft]	Latitude	Longitude	DLS [°/100ft]	Comments	
8530.00†	90.000	89.073	6897.00	1855.19	-107.95	1855.56	40.5050310	-104.5784018	0.00		
8630.00†	90.000	89.073	6897.00	1955.18	-106.33	1955.55	40.5050326	-104.5780422	0.00		
8730.00†	90.000	89.073	6897.00	2055.17	-104.71	2055.54	40.5050341	-104.5776826	0.00		
8830.00†	90.000	89.073	6897.00	2155.16	-103.09	2155.52	40.5050357	-104.5773230	0.00		
8930.00†	90.000	89.073	6897.00	2255.15	-101.48	2255.51	40.5050373	-104.5769634	0.00		
9030.00†	90.000	89.073	6897.00	2355.15	-99.86	2355.50	40.5050389	-104.5766038	0.00		
9130.00†	90.000	89.073	6897.00	2455.14	-98.24	2455.48	40.5050405	-104.5762443	0.00		
9230.00†	90.000	89.073	6897.00	2555.13	-96.62	2555.47	40.5050421	-104.5758847	0.00		
9330.00†	90.000	89.073	6897.00	2655.12	-95.00	2655.46	40.5050437	-104.5755251	0.00		
9430.00†	90.000	89.073	6897.00	2755.11	-93.38	2755.45	40.5050452	-104.5751655	0.00		
9530.00†	90.000	89.073	6897.00	2855.11	-91.77	2855.43	40.5050468	-104.5748059	0.00		
9630.00†	90.000	89.073	6897.00	2955.10	-90.15	2955.42	40.5050484	-104.5744463	0.00		
9730.00†	90.000	89.073	6897.00	3055.09	-88.53	3055.41	40.5050500	-104.5740867	0.00		
9830.00†	90.000	89.073	6897.00	3155.08	-86.91	3155.39	40.5050515	-104.5737271	0.00		
9930.00†	90.000	89.073	6897.00	3255.07	-85.29	3255.38	40.5050531	-104.5733675	0.00		
10030.00†	90.000	89.073	6897.00	3355.06	-83.67	3355.37	40.5050547	-104.5730079	0.00		
10130.00†	90.000	89.073	6897.00	3455.06	-82.06	3455.35	40.5050563	-104.5726483	0.00		
10230.00†	90.000	89.073	6897.00	3555.05	-80.44	3555.34	40.5050578	-104.5722887	0.00		
10330.00†	90.000	89.073	6897.00	3655.04	-78.82	3655.33	40.5050594	-104.5719292	0.00		
10430.00†	90.000	89.073	6897.00	3755.03	-77.20	3755.31	40.5050610	-104.5715696	0.00		
10530.00†	90.000	89.073	6897.00	3855.02	-75.58	3855.30	40.5050625	-104.5712100	0.00		
10630.00†	90.000	89.073	6897.00	3955.02	-73.96	3955.29	40.5050641	-104.5708504	0.00		
10730.00†	90.000	89.073	6897.00	4055.01	-72.34	4055.27	40.5050657	-104.5704908	0.00		
10830.00†	90.000	89.073	6897.00	4155.00	-70.73	4155.26	40.5050672	-104.5701312	0.00		
10930.00†	90.000	89.073	6897.00	4254.99	-69.11	4255.25	40.5050688	-104.5697716	0.00		
11030.00†	90.000	89.073	6897.00	4354.98	-67.49	4355.24	40.5050704	-104.5694120	0.00		
11130.00†	90.000	89.073	6897.00	4454.97	-65.87	4455.22	40.5050719	-104.5690524	0.00		
11230.00†	90.000	89.073	6897.00	4554.97	-64.25	4555.21	40.5050735	-104.5686928	0.00		
11330.00†	90.000	89.073	6897.00	4654.96	-62.63	4655.20	40.5050750	-104.5683332	0.00		
11430.00†	90.000	89.073	6897.00	4754.95	-61.02	4755.18	40.5050766	-104.5679736	0.00		
11530.00†	90.000	89.073	6897.00	4854.94	-59.40	4855.17	40.5050782	-104.5676140	0.00		
11630.00†	90.000	89.073	6897.00	4954.93	-57.78	4955.16	40.5050797	-104.5672545	0.00		
11730.00†	90.000	89.073	6897.00	5054.92	-56.16	5055.14	40.5050813	-104.5668949	0.00		
11830.00†	90.000	89.073	6897.00	5154.92	-54.54	5155.13	40.5050828	-104.5665353	0.00		
11930.00†	90.000	89.073	6897.00	5254.91	-52.92	5255.12	40.5050844	-104.5661757	0.00		
12030.00†	90.000	89.073	6897.00	5354.90	-51.31	5355.10	40.5050859	-104.5658161	0.00		
12130.00†	90.000	89.073	6897.00	5454.89	-49.69	5455.09	40.5050875	-104.5654565	0.00		
12230.00†	90.000	89.073	6897.00	5554.88	-48.07	5555.08	40.5050890	-104.5650969	0.00		
12330.00†	90.000	89.073	6897.00	5654.88	-46.45	5655.07	40.5050906	-104.5647373	0.00		
12430.00†	90.000	89.073	6897.00	5754.87	-44.83	5755.05	40.5050921	-104.5643777	0.00		
12530.00†	90.000	89.073	6897.00	5854.86	-43.21	5855.04	40.5050937	-104.5640181	0.00		
12630.00†	90.000	89.073	6897.00	5954.85	-41.60	5955.03	40.5050952	-104.5636585	0.00		
12730.00†	90.000	89.073	6897.00	6054.84	-39.98	6055.01	40.5050968	-104.5632989	0.00		
12830.00†	90.000	89.073	6897.00	6154.83	-38.36	6155.00	40.5050983	-104.5629394	0.00		
12930.00†	90.000	89.073	6897.00	6254.83	-36.74	6254.99	40.5050998	-104.5625798	0.00		





Planned Wellpath Report  
BISHOP A08-675 (REV-A.0) PWP  
Page 5 of 7



REFERENCE WELLPATH IDENTIFICATION			
Operator	NOBLE ENERGY, INC	Well	BISHOP A08-675
Field	WELD COUNTY (NOBLE NAD 83 GRID)	API/Legal	
Facility	SEC.07-T06N-R64W	Wellbore	BISHOP A08-675 PWB
Slot	SLOT#02 BISHOP A08-675 (861'FNL & 387'FEL,SEC.07)		

WELLPATH DATA (181 stations) † = interpolated, ‡ = extrapolated station										
MD [ft]	Inclination [°]	Azimuth [°]	TVD [ft]	Vert Sect [ft]	North [ft]	East [ft]	Latitude	Longitude	DLS [°/100ft]	Comments
13030.00†	90.000	89.073	6897.00	6354.82	-35.12	6354.97	40.5051014	-104.5622202	0.00	
13130.00†	90.000	89.073	6897.00	6454.81	-33.50	6454.96	40.5051029	-104.5618606	0.00	
13230.00†	90.000	89.073	6897.00	6554.80	-31.89	6554.95	40.5051045	-104.5615010	0.00	
13330.00†	90.000	89.073	6897.00	6654.79	-30.27	6654.93	40.5051060	-104.5611414	0.00	
13430.00†	90.000	89.073	6897.00	6754.79	-28.65	6754.92	40.5051075	-104.5607818	0.00	
13530.00†	90.000	89.073	6897.00	6854.78	-27.03	6854.91	40.5051091	-104.5604222	0.00	
13630.00†	90.000	89.073	6897.00	6954.77	-25.41	6954.90	40.5051106	-104.5600626	0.00	
13730.00†	90.000	89.073	6897.00	7054.76	-23.79	7054.88	40.5051121	-104.5597030	0.00	
13830.00†	90.000	89.073	6897.00	7154.75	-22.17	7154.87	40.5051137	-104.5593434	0.00	
13930.00†	90.000	89.073	6897.00	7254.74	-20.56	7254.86	40.5051152	-104.5589838	0.00	
14030.00†	90.000	89.073	6897.00	7354.74	-18.94	7354.84	40.5051167	-104.5586242	0.00	
14130.00†	90.000	89.073	6897.00	7454.73	-17.32	7454.83	40.5051182	-104.5582647	0.00	
14230.00†	90.000	89.073	6897.00	7554.72	-15.70	7554.82	40.5051198	-104.5579051	0.00	
14330.00†	90.000	89.073	6897.00	7654.71	-14.08	7654.80	40.5051213	-104.5575455	0.00	
14430.00†	90.000	89.073	6897.00	7754.70	-12.46	7754.79	40.5051228	-104.5571859	0.00	
14530.00†	90.000	89.073	6897.00	7854.70	-10.85	7854.78	40.5051243	-104.5568263	0.00	
14630.00†	90.000	89.073	6897.00	7954.69	-9.23	7954.76	40.5051259	-104.5564667	0.00	
14730.00†	90.000	89.073	6897.00	8054.68	-7.61	8054.75	40.5051274	-104.5561071	0.00	
14830.00†	90.000	89.073	6897.00	8154.67	-5.99	8154.74	40.5051289	-104.5557475	0.00	
14930.00†	90.000	89.073	6897.00	8254.66	-4.37	8254.72	40.5051304	-104.5553879	0.00	
15030.00†	90.000	89.073	6897.00	8354.65	-2.75	8354.71	40.5051319	-104.5550283	0.00	
15130.00†	90.000	89.073	6897.00	8454.65	-1.14	8454.70	40.5051335	-104.5546687	0.00	
15230.00†	90.000	89.073	6897.00	8554.64	0.48	8554.69	40.5051350	-104.5543091	0.00	
15330.00†	90.000	89.073	6897.00	8654.63	2.10	8654.67	40.5051365	-104.5539495	0.00	
15430.00†	90.000	89.073	6897.00	8754.62	3.72	8754.66	40.5051380	-104.5535899	0.00	
15530.00†	90.000	89.073	6897.00	8854.61	5.34	8854.65	40.5051395	-104.5532304	0.00	
15630.00†	90.000	89.073	6897.00	8954.61	6.96	8954.63	40.5051410	-104.5528708	0.00	
15730.00†	90.000	89.073	6897.00	9054.60	8.57	9054.62	40.5051425	-104.5525112	0.00	
15830.00†	90.000	89.073	6897.00	9154.59	10.19	9154.61	40.5051441	-104.5521516	0.00	
15930.00†	90.000	89.073	6897.00	9254.58	11.81	9254.59	40.5051456	-104.5517920	0.00	
16030.00†	90.000	89.073	6897.00	9354.57	13.43	9354.58	40.5051471	-104.5514324	0.00	
16130.00†	90.000	89.073	6897.00	9454.56	15.05	9454.57	40.5051486	-104.5510728	0.00	
16230.00†	90.000	89.073	6897.00	9554.56	16.67	9554.55	40.5051501	-104.5507132	0.00	
16330.00†	90.000	89.073	6897.00	9654.55	18.28	9654.54	40.5051516	-104.5503536	0.00	
16430.00†	90.000	89.073	6897.00	9754.54	19.90	9754.53	40.5051531	-104.5499940	0.00	
16530.00†	90.000	89.073	6897.00	9854.53	21.52	9854.52	40.5051546	-104.5496344	0.00	
16630.00†	90.000	89.073	6897.00	9954.52	23.14	9954.50	40.5051561	-104.5492748	0.00	
16730.00†	90.000	89.073	6897.00	10054.52	24.76	10054.49	40.5051576	-104.5489152	0.00	
16830.00†	90.000	89.073	6897.00	10154.51	26.38	10154.48	40.5051591	-104.5485557	0.00	
16930.00†	90.000	89.073	6897.00	10254.50	27.99	10254.46	40.5051606	-104.5481961	0.00	
17030.00†	90.000	89.073	6897.00	10354.49	29.61	10354.45	40.5051621	-104.5478365	0.00	
17130.00†	90.000	89.073	6897.00	10454.48	31.23	10454.44	40.5051636	-104.5474769	0.00	
17230.00†	90.000	89.073	6897.00	10554.47	32.85	10554.42	40.5051651	-104.5471173	0.00	
17330.00†	90.000	89.073	6897.00	10654.47	34.47	10654.41	40.5051666	-104.5467577	0.00	
17430.00†	90.000	89.073	6897.00	10754.46	36.09	10754.40	40.5051680	-104.5463981	0.00	



Planned Wellpath Report  
BISHOP A08-675 (REV-A.0) PWP  
Page 6 of 7



REFERENCE WELLPATH IDENTIFICATION			
Operator	NOBLE ENERGY, INC	Well	BISHOP A08-675
Field	WELD COUNTY (NOBLE NAD 83 GRID)	API/Legal	
Facility	SEC.07-T06N-R64W	Wellbore	BISHOP A08-675 PWB
Slot	SLOT#02 BISHOP A08-675 (861'FNL & 387'FEL,SEC.07)		

WELLPATH DATA (181 stations)										
MD [ft]	Inclination [°]	Azimuth [°]	TVD [ft]	Vert Sect [ft]	North [ft]	East [ft]	Latitude	Longitude	DLS [°/100ft]	Comments
17454.49	90.000	89.073	6897.00 <sup>2</sup>	10778.94	36.48	10778.88	40.5051684	-104.5463100	0.00	End of Tangent (XS)

HOLE & CASING SECTIONS - Ref Wellbore: BISHOP A08-675 PWB      Ref Wellpath: BISHOP A08-675 (REV-A.0) PWP									
String/Diameter	Start MD [ft]	End MD [ft]	Interval [ft]	Start TVD [ft]	End TVD [ft]	Start N/S [ft]	Start E/W [ft]	End N/S [ft]	End E/W [ft]
9.625in Casing Surface	30.00	1950.00	1920.00	30.00	1950.00	0.00	0.00	0.00	0.00

TARGETS									
Name	MD [ft]	TVD [ft]	North [ft]	East [ft]	Grid East [US ft]	Grid North [US ft]	Latitude	Longitude	Shape
OGDP 1 SEC.07-T06N-R64W	N/A	0.00	-0.37	-36.15	3254380.72	1428262.61	40.5053800	-104.5852000	polygon
	2D Polygon: dimensions not calculated								
OGDP 1 SEC.08-T06N-R64W	N/A	0.00	-0.37	-36.15	3254380.72	1428262.61	40.5053800	-104.5852000	polygon
	2D Polygon: dimensions not calculated								
OGDP 1 SEC.09-T06N-R64W	N/A	0.00	-0.37	-36.15	3254380.72	1428262.61	40.5053800	-104.5852000	polygon
	2D Polygon: dimensions not calculated								
2) BISHOP A08-675 BHL Rev-1 (1008'FSL & 200'FEL,SEC.09)	17454.49	6897.00	36.48	10778.88	3265195.37	1428299.47	40.5051684	-104.5463100	point
1) BISHOP A08-675 LP Rev-1 (1003'FNL & 200'FWL,SEC.08)	7262.64	6897.00	-128.46	588.36	3255005.21	1428134.53	40.5050107	-104.5829591	point

SURVEY PROGRAM - Ref Wellbore: BISHOP A08-675 PWB      Ref Wellpath: BISHOP A08-675 (REV-A.0) PWP					
Start MD [ft]	End MD [ft]	Positional Uncertainty Model	Log Name/Comment	Wellbore	
30.00	17454.49	OWSG MWD rev2 (MS+IFR1)		BISHOP A08-675 PWB	



Planned Wellpath Report

BISHOP A08-675 (REV-A.0) PWP

Page 7 of 7



REFERENCE WELLPATH IDENTIFICATION			
Operator	NOBLE ENERGY, INC	Well	BISHOP A08-675
Field	WELD COUNTY (NOBLE NAD 83 GRID)	API/Legal	
Facility	SEC.07-T06N-R64W	Wellbore	BISHOP A08-675 PWB
Slot	SLOT#02 BISHOP A08-675 (861'FNL & 387'FEL,SEC.07)		

DESIGN COMMENTS				
MD [ft]	Inclination [°]	Azimuth [°]	TVD [ft]	Comment
30.00	0.000	201.900	30.00	Tie On
2000.00	0.000	201.900	2000.00	End of Tangent
2088.34	1.767	201.900	2088.32	End of Build (XS)
6255.02	1.767	201.900	6253.03	End of Tangent (XS)
7262.64	90.000	89.073	6897.00	End of 3D Arc (XS)
17454.49	90.000	89.073	6897.00	End of Tangent (XS)