

NOBLE ENERGY, INC



Location: COLORADO Slot: SLOT#15 BISHOP A18-724 (859'FNL & 499'FEL, SEC.07)

Field: WELD COUNTY (NOBLE NAD 83 GRID) Well: BISHOP A18-724

Facility: SEC.07-T06N-R64W Wellbore: BISHOP A18-724 PWB

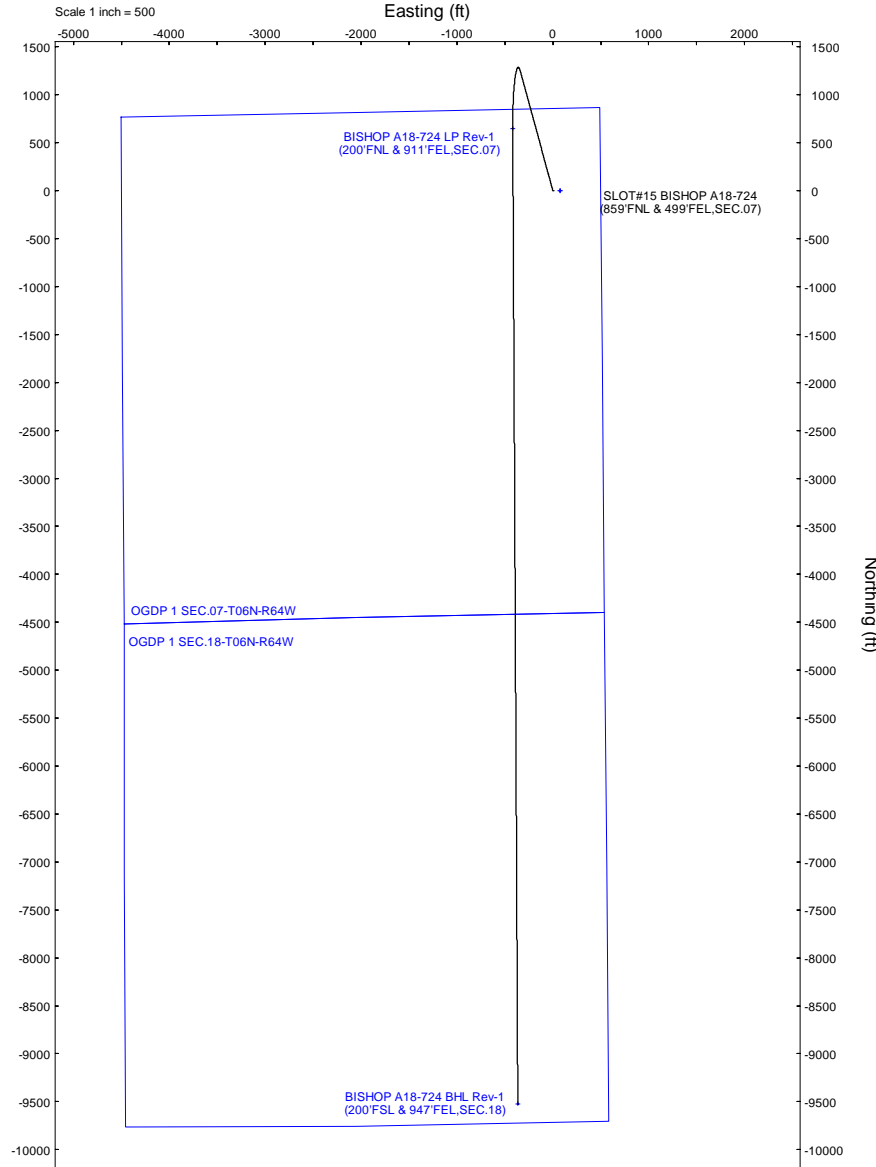
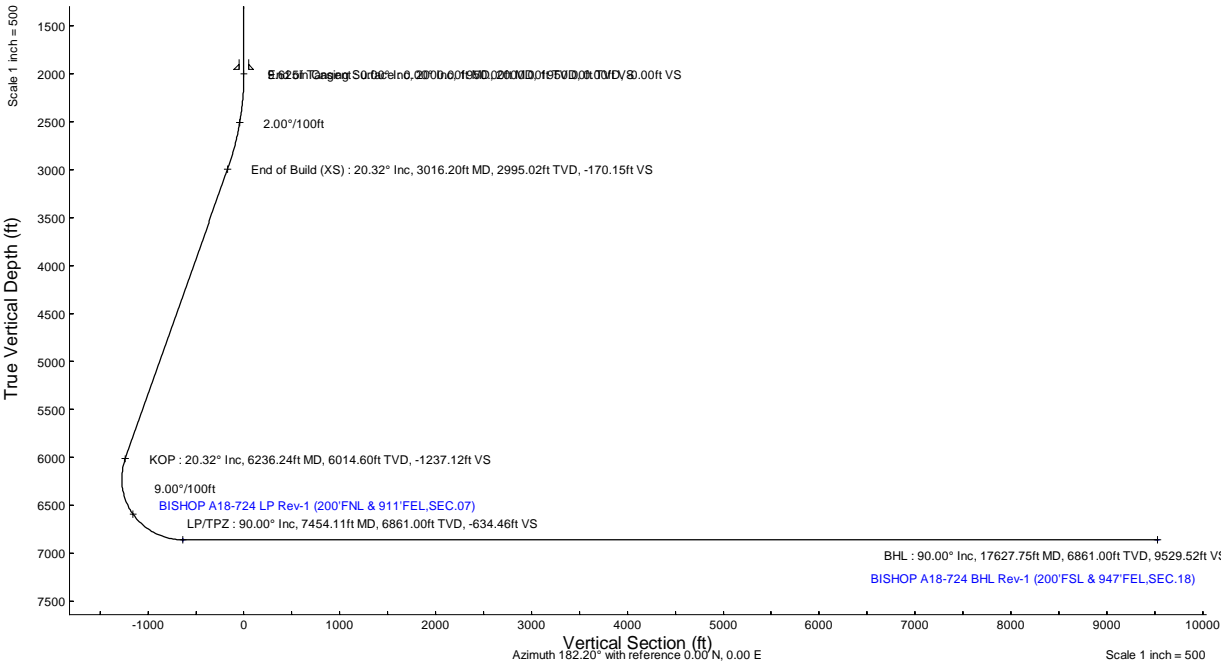
Plot reference wellpath is BISHOP A18-724 (REV-A.0) PWP	Grid System: NAD83 / Lambert Colorado SP, Northern Zone (501), US feet
True vertical depths are referenced to (4741'GL+30'KB@4771'RKB) (RKB)	North Reference: Grid north
Reference wellpath measured depths are referenced to (4741'GL+30'KB@4771'RKB) (RKB)	Scale: True distance
(4741'GL+30'KB@4771'RKB) (RKB) to Mean Sea Level: 4771 feet	Coordinates are in feet referenced to Slot
Mean Sea Level to Ground level (At Slot: SLOT#15 BISHOP A18-724 (859'FNL & 499'FEL, SEC.07)): 0 feet	Depths are in feet
Offset wellpath MDs are referenced to each path's default MD datum	Created by: gurnaler on 2023-01-13; Database: WA_Denver

Location Information					
Facility Name			Grid East (US ft)	Grid North (US ft)	Latitude
SEC.07-T06N-R64W			3254380.716	1428262.611	40°30'19.3680"N
Slot			Grid East (US ft)	Grid North (US ft)	Longitude
SLOT#15 BISHOP A18-724 (859'FNL & 499'FEL, SEC.07)	Local N (ft)	Local E (ft)	3254305.839	1428261.837	40°30'19.3680"N
(4741'GL+30'KB@4771'RKB) (RKB) to Ground level (At Slot: SLOT#15 BISHOP A18-724 (859'FNL & 499'FEL, SEC.07))			4771ft		
Mean Sea Level to Ground level (At Slot: SLOT#15 BISHOP A18-724 (859'FNL & 499'FEL, SEC.07))			0ft		
(4741'GL+30'KB@4771'RKB) (RKB) to Mean Sea Level			4771ft		

Well Profile Data							
Design Comment	MD (ft)	Inc (°)	Az (°)	TVD (ft)	Local N (ft)	Local E (ft)	DLS (°/100ft)
SHL	30.00	0.000	344.758	30.00	0.00	0.00	0.00
End of Tangent	2000.00	0.000	344.758	2000.00	0.00	0.00	0.00
End of Build (XS)	3016.20	20.324	344.758	2995.02	172.08	-46.89	2.00
KOP	6236.24	20.324	344.758	6014.60	1251.15	-340.92	0.00
LP/TPZ	7454.11	90.000	179.705	6861.00	651.03	-418.68	9.00
BHL	17627.75	90.000	179.705	6861.00	-9522.48	-366.25	0.00

Targets							
Name	MD (ft)	TVD (ft)	Local N (ft)	Local E (ft)	Grid East (US ft)	Grid North (US ft)	Latitude
OGDP 1 SEC.07-T06N-R64W	N/A	-1.00	0.77	75.08	3254380.72	1428262.61	40°30'19.3680"N
OGDP 1 SEC.18-T06N-R64W	N/A	-1.00	0.77	75.08	3254380.72	1428262.61	40°30'19.3680"N
BISHOP A18-724 BHL Rev-1 (200'FSL & 947'FEL, SEC.18)	17627.75	6861.00	-9522.48	-366.25	3253886.97	1418739.70	40°30'13.7021"W
BISHOP A18-724 LP Rev-1 (200'FNL & 911'FEL, SEC.07)	7454.11	6861.00	651.03	-418.68	3253886.97	1428912.85	40°30'25.8434"N

Survey Program					
Start MD (ft)	End MD (ft)	Tool	Model	Log Name/Comment	Wellbore
30.00	17627.75	OWSG MWD rev2	OWSG MWD rev2 (MS+IFR1)		BISHOP A18-724 PWB



N
Grid
W
E
Magnetic North is 7.44 degrees East of True North (as of 1/13/2023)
Grid North is 0.59 degrees East of True North
To correct azimuth from True to Grid subtract 0.59 degrees
To correct azimuth from Magnetic to Grid add 6.85 degrees



Planned Wellpath Report
BISHOP A18-724 (REV-A.0) PWP
Page 1 of 7



REFERENCE WELLPATH IDENTIFICATION			
Operator	NOBLE ENERGY, INC	Well	BISHOP A18-724
Field	WELD COUNTY (NOBLE NAD 83 GRID)	API/Legal	
Facility	SEC.07-T06N-R64W	Wellbore	BISHOP A18-724 PWB
Slot	SLOT#15 BISHOP A18-724 (859'FNL & 499'FEL,SEC.07)		

REPORT SETUP INFORMATION			
Projection System	NAD83 / Lambert Colorado SP, Northern Zone (501), US feet	Software System	WellArchitect® 6.0
North Reference	Grid	User	Guenaler
Scale	0.999967	Report Generated	1/13/2023 at 3:45:42 PM
Convergence at slot	0.59° East	Database	WA_Denver

WELLPATH LOCATION						
	Local coordinates		Grid coordinates		Geographic coordinates	
	North[ft]	East[ft]	Easting[US ft]	Northing[US ft]	Latitude	Longitude
Slot Location	-0.77	-75.08	3254305.64	1428261.84	40.5053800°	-104.5854700°
Facility Reference Pt			3254380.72	1428262.61	40.5053800°	-104.5852000°
Field Reference Pt			3000000.00	4454105.15	48.7761986°	-105.5000000°

WELLPATH DATUM			
Calculation method	Minimum curvature	(4741'GL+30'KB@4771'RKB) (RKB) to Facility Vertical Datum	4771.00ft
Horizontal Reference Pt	Slot	(4741'GL+30'KB@4771'RKB) (RKB) to Mean Sea Level	4771.00ft
Vertical Reference Pt	(4741'GL+30'KB@4771'RKB) (RKB)	(4741'GL+30'KB@4771'RKB) (RKB) to Ground Level at Slot (SLOT#15 BISHOP A18-724 (859'FNL & 499'FEL,SEC.07))	4771.00ft
MD Reference Pt	(4741'GL+30'KB@4771'RKB) (RKB)	Section Origin	N 0.00, E 0.00 ft
Field Vertical Reference	Mean Sea Level	Section Azimuth	182.20°



Planned Wellpath Report
BISHOP A18-724 (REV-A.0) PWP
Page 2 of 7



REFERENCE WELLPATH IDENTIFICATION			
Operator	NOBLE ENERGY, INC	Well	BISHOP A18-724
Field	WELD COUNTY (NOBLE NAD 83 GRID)	API/Legal	
Facility	SEC.07-T06N-R64W	Wellbore	BISHOP A18-724 PWB
Slot	SLOT#15 BISHOP A18-724 (859'FNL & 499'FEL,SEC.07)		

WELLPATH DATA (182 stations) † = interpolated, ‡ = extrapolated station										
MD [ft]	Inclination [°]	Azimuth [°]	TVD [ft]	Vert Sect [ft]	North [ft]	East [ft]	Latitude	Longitude	DLS [°/100ft]	Comments
0.00†	0.000	344.758	0.00	0.00	0.00	0.00	40.5053800	-104.5854700	0.00	
30.00	0.000	344.758	30.00	0.00	0.00	0.00	40.5053800	-104.5854700	0.00	SHL
130.00†	0.000	344.758	130.00	0.00	0.00	0.00	40.5053800	-104.5854700	0.00	
230.00†	0.000	344.758	230.00	0.00	0.00	0.00	40.5053800	-104.5854700	0.00	
330.00†	0.000	344.758	330.00	0.00	0.00	0.00	40.5053800	-104.5854700	0.00	
430.00†	0.000	344.758	430.00	0.00	0.00	0.00	40.5053800	-104.5854700	0.00	
530.00†	0.000	344.758	530.00	0.00	0.00	0.00	40.5053800	-104.5854700	0.00	
630.00†	0.000	344.758	630.00	0.00	0.00	0.00	40.5053800	-104.5854700	0.00	
730.00†	0.000	344.758	730.00	0.00	0.00	0.00	40.5053800	-104.5854700	0.00	
830.00†	0.000	344.758	830.00	0.00	0.00	0.00	40.5053800	-104.5854700	0.00	
930.00†	0.000	344.758	930.00	0.00	0.00	0.00	40.5053800	-104.5854700	0.00	
1030.00†	0.000	344.758	1030.00	0.00	0.00	0.00	40.5053800	-104.5854700	0.00	
1130.00†	0.000	344.758	1130.00	0.00	0.00	0.00	40.5053800	-104.5854700	0.00	
1230.00†	0.000	344.758	1230.00	0.00	0.00	0.00	40.5053800	-104.5854700	0.00	
1330.00†	0.000	344.758	1330.00	0.00	0.00	0.00	40.5053800	-104.5854700	0.00	
1430.00†	0.000	344.758	1430.00	0.00	0.00	0.00	40.5053800	-104.5854700	0.00	
1530.00†	0.000	344.758	1530.00	0.00	0.00	0.00	40.5053800	-104.5854700	0.00	
1630.00†	0.000	344.758	1630.00	0.00	0.00	0.00	40.5053800	-104.5854700	0.00	
1730.00†	0.000	344.758	1730.00	0.00	0.00	0.00	40.5053800	-104.5854700	0.00	
1830.00†	0.000	344.758	1830.00	0.00	0.00	0.00	40.5053800	-104.5854700	0.00	
1930.00†	0.000	344.758	1930.00	0.00	0.00	0.00	40.5053800	-104.5854700	0.00	
2000.00	0.000	344.758	2000.00	0.00	0.00	0.00	40.5053800	-104.5854700	0.00	End of Tangent
2030.00†	0.600	344.758	2030.00	-0.15	0.15	-0.04	40.5053804	-104.5854701	2.00	
2130.00†	2.600	344.758	2129.96	-2.81	2.85	-0.78	40.5053878	-104.5854727	2.00	
2230.00†	4.600	344.758	2229.75	-8.80	8.90	-2.43	40.5054045	-104.5854784	2.00	
2330.00†	6.600	344.758	2329.27	-18.11	18.32	-4.99	40.5054304	-104.5854873	2.00	
2430.00†	8.600	344.758	2428.39	-30.73	31.08	-8.47	40.5054655	-104.5854993	2.00	
2530.00†	10.600	344.758	2526.98	-46.64	47.17	-12.85	40.5055098	-104.5855145	2.00	
2630.00†	12.600	344.758	2624.93	-65.82	66.57	-18.14	40.5055632	-104.5855328	2.00	
2730.00†	14.600	344.758	2722.13	-88.25	89.25	-24.32	40.5056257	-104.5855541	2.00	
2830.00†	16.600	344.758	2818.44	-113.91	115.20	-31.39	40.5056971	-104.5855786	2.00	
2930.00†	18.600	344.758	2913.75	-142.75	144.37	-39.34	40.5057774	-104.5856061	2.00	
3016.20	20.324	344.758	2995.02	-170.15	172.08	-46.89	40.5058536	-104.5856322	2.00	End of Build (XS)
3030.00†	20.324	344.758	3007.96	-174.72	176.70	-48.15	40.5058664	-104.5856366	0.00	
3130.00†	20.324	344.758	3101.74	-207.86	210.21	-57.28	40.5059586	-104.5856682	0.00	
3230.00†	20.324	344.758	3195.51	-240.99	243.72	-66.41	40.5060508	-104.5856998	0.00	
3330.00†	20.324	344.758	3289.29	-274.13	277.24	-75.54	40.5061431	-104.5857314	0.00	
3430.00†	20.324	344.758	3383.06	-307.26	310.75	-84.67	40.5062353	-104.5857629	0.00	
3530.00†	20.324	344.758	3476.84	-340.40	344.26	-93.80	40.5063275	-104.5857945	0.00	
3630.00†	20.324	344.758	3570.61	-373.53	377.77	-102.94	40.5064198	-104.5858261	0.00	
3730.00†	20.324	344.758	3664.38	-406.67	411.28	-112.07	40.5065120	-104.5858577	0.00	
3830.00†	20.324	344.758	3758.16	-439.80	444.79	-121.20	40.5066042	-104.5858893	0.00	
3930.00†	20.324	344.758	3851.93	-472.94	478.30	-130.33	40.5066965	-104.5859209	0.00	
4030.00†	20.324	344.758	3945.71	-506.07	511.81	-139.46	40.5067887	-104.5859525	0.00	
4130.00†	20.324	344.758	4039.48	-539.21	545.32	-148.59	40.5068810	-104.5859841	0.00	



Planned Wellpath Report
BISHOP A18-724 (REV-A.0) PWP
Page 3 of 7



REFERENCE WELLPATH IDENTIFICATION			
Operator	NOBLE ENERGY, INC	Well	BISHOP A18-724
Field	WELD COUNTY (NOBLE NAD 83 GRID)	API/Legal	
Facility	SEC.07-T06N-R64W	Wellbore	BISHOP A18-724 PWB
Slot	SLOT#15 BISHOP A18-724 (859'FNL & 499'FEL,SEC.07)		

WELLPATH DATA (182 stations) † = interpolated, ‡ = extrapolated station											
MD [ft]	Inclination [°]	Azimuth [°]	TVD [ft]	Vert Sect [ft]	North [ft]	East [ft]	Latitude	Longitude	DLS [°/100ft]	Comments	
4230.00†	20.324	344.758	4133.26	-572.34	578.83	-157.72	40.5069732	-104.5860157	0.00		
4330.00†	20.324	344.758	4227.03	-605.48	612.34	-166.85	40.5070654	-104.5860473	0.00		
4430.00†	20.324	344.758	4320.81	-638.61	645.86	-175.99	40.5071577	-104.5860789	0.00		
4530.00†	20.324	344.758	4414.58	-671.75	679.37	-185.12	40.5072499	-104.5861105	0.00		
4630.00†	20.324	344.758	4508.35	-704.89	712.88	-194.25	40.5073421	-104.5861421	0.00		
4730.00†	20.324	344.758	4602.13	-738.02	746.39	-203.38	40.5074344	-104.5861737	0.00		
4830.00†	20.324	344.758	4695.90	-771.16	779.90	-212.51	40.5075266	-104.5862052	0.00		
4930.00†	20.324	344.758	4789.68	-804.29	813.41	-221.64	40.5076188	-104.5862368	0.00		
5030.00†	20.324	344.758	4883.45	-837.43	846.92	-230.77	40.5077111	-104.5862684	0.00		
5130.00†	20.324	344.758	4977.23	-870.56	880.43	-239.90	40.5078033	-104.5863000	0.00		
5230.00†	20.324	344.758	5071.00	-903.70	913.94	-249.03	40.5078955	-104.5863316	0.00		
5330.00†	20.324	344.758	5164.77	-936.83	947.45	-258.17	40.5079878	-104.5863632	0.00		
5430.00†	20.324	344.758	5258.55	-969.97	980.97	-267.30	40.5080800	-104.5863948	0.00		
5530.00†	20.324	344.758	5352.32	-1003.10	1014.48	-276.43	40.5081723	-104.5864264	0.00		
5630.00†	20.324	344.758	5446.10	-1036.24	1047.99	-285.56	40.5082645	-104.5864580	0.00		
5730.00†	20.324	344.758	5539.87	-1069.37	1081.50	-294.69	40.5083567	-104.5864896	0.00		
5830.00†	20.324	344.758	5633.65	-1102.51	1115.01	-303.82	40.5084490	-104.5865212	0.00		
5930.00†	20.324	344.758	5727.42	-1135.64	1148.52	-312.95	40.5085412	-104.5865528	0.00		
6030.00†	20.324	344.758	5821.20	-1168.78	1182.03	-322.08	40.5086334	-104.5865844	0.00		
6130.00†	20.324	344.758	5914.97	-1201.91	1215.54	-331.22	40.5087257	-104.5866160	0.00		
6230.00†	20.324	344.758	6008.74	-1235.05	1249.05	-340.35	40.5088179	-104.5866476	0.00		
6236.24	20.324	344.758	6014.60	-1237.12	1251.15	-340.92	40.5088237	-104.5866495	0.00	KOP	
6330.00†	12.416	333.988	6104.50	-1261.58	1275.96	-349.63	40.5088920	-104.5866800	9.00		
6430.00†	5.871	291.425	6203.27	-1272.76	1287.51	-359.13	40.5089240	-104.5867137	9.00		
6530.00†	8.735	218.151	6302.64	-1268.29	1283.40	-368.60	40.5089130	-104.5867479	9.00		
6630.00†	16.722	198.246	6400.14	-1248.27	1263.73	-377.81	40.5088592	-104.5867817	9.00		
6730.00†	25.386	191.319	6493.39	-1213.21	1228.97	-386.54	40.5087641	-104.5868144	9.00		
6830.00†	34.216	187.781	6580.09	-1163.96	1180.00	-394.57	40.5086299	-104.5868451	9.00		
6930.00†	43.110	185.562	6658.10	-1101.74	1118.00	-401.71	40.5084599	-104.5868731	9.00		
7030.00†	52.034	183.980	6725.50	-1028.07	1044.52	-407.77	40.5082584	-104.5868976	9.00		
7130.00†	60.975	182.743	6780.63	-944.78	961.35	-412.60	40.5080303	-104.5869180	9.00		
7230.00†	69.926	181.705	6822.14	-853.92	870.55	-416.10	40.5077812	-104.5869340	9.00		
7330.00†	78.882	180.780	6849.00	-757.71	774.36	-418.17	40.5075172	-104.5869450	9.00		
7430.00†	87.840	179.911	6860.55	-658.54	675.13	-418.76	40.5072449	-104.5869508	9.00		
7454.11	90.000	179.705	6861.00†	-634.46	651.03	-418.68	40.5071787	-104.5869514	9.00	LP/TPZ	
7530.00†	90.000	179.705	6861.00	-558.64	575.14	-418.29	40.5069704	-104.5869528	0.00		
7630.00†	90.000	179.705	6861.00	-458.73	475.14	-417.78	40.5066959	-104.5869546	0.00		
7730.00†	90.000	179.705	6861.00	-358.83	375.14	-417.26	40.5064215	-104.5869565	0.00		
7830.00†	90.000	179.705	6861.00	-258.92	275.14	-416.74	40.5061470	-104.5869583	0.00		
7930.00†	90.000	179.705	6861.00	-159.02	175.14	-416.23	40.5058725	-104.5869602	0.00		
8030.00†	90.000	179.705	6861.00	-59.11	75.15	-415.71	40.5055980	-104.5869620	0.00		
8130.00†	90.000	179.705	6861.00	40.79	-24.85	-415.20	40.5053235	-104.5869639	0.00		
8230.00†	90.000	179.705	6861.00	140.70	-124.85	-414.68	40.5050490	-104.5869657	0.00		
8330.00†	90.000	179.705	6861.00	240.60	-224.85	-414.17	40.5047746	-104.5869676	0.00		
8430.00†	90.000	179.705	6861.00	340.51	-324.85	-413.65	40.5045001	-104.5869694	0.00		



Planned Wellpath Report
BISHOP A18-724 (REV-A.0) PWP
Page 4 of 7



REFERENCE WELLPATH IDENTIFICATION			
Operator	NOBLE ENERGY, INC	Well	BISHOP A18-724
Field	WELD COUNTY (NOBLE NAD 83 GRID)	API/Legal	
Facility	SEC.07-T06N-R64W	Wellbore	BISHOP A18-724 PWB
Slot	SLOT#15 BISHOP A18-724 (859'FNL & 499'FEL,SEC.07)		

WELLPATH DATA (182 stations) † = interpolated, ‡ = extrapolated station										
MD [ft]	Inclination [°]	Azimuth [°]	TVD [ft]	Vert Sect [ft]	North [ft]	East [ft]	Latitude	Longitude	DLS [°/100ft]	Comments
8530.00†	90.000	179.705	6861.00	440.41	-424.85	-413.14	40.5042256	-104.5869713	0.00	
8630.00†	90.000	179.705	6861.00	540.32	-524.85	-412.62	40.5039511	-104.5869731	0.00	
8730.00†	90.000	179.705	6861.00	640.22	-624.85	-412.11	40.5036766	-104.5869750	0.00	
8830.00†	90.000	179.705	6861.00	740.13	-724.84	-411.59	40.5034022	-104.5869768	0.00	
8930.00†	90.000	179.705	6861.00	840.03	-824.84	-411.08	40.5031277	-104.5869787	0.00	
9030.00†	90.000	179.705	6861.00	939.94	-924.84	-410.56	40.5028532	-104.5869805	0.00	
9130.00†	90.000	179.705	6861.00	1039.84	-1024.84	-410.05	40.5025787	-104.5869824	0.00	
9230.00†	90.000	179.705	6861.00	1139.75	-1124.84	-409.53	40.5023042	-104.5869842	0.00	
9330.00†	90.000	179.705	6861.00	1239.65	-1224.84	-409.01	40.5020298	-104.5869861	0.00	
9430.00†	90.000	179.705	6861.00	1339.56	-1324.84	-408.50	40.5017553	-104.5869879	0.00	
9530.00†	90.000	179.705	6861.00	1439.46	-1424.83	-407.98	40.5014808	-104.5869898	0.00	
9630.00†	90.000	179.705	6861.00	1539.37	-1524.83	-407.47	40.5012063	-104.5869916	0.00	
9730.00†	90.000	179.705	6861.00	1639.27	-1624.83	-406.95	40.5009318	-104.5869935	0.00	
9830.00†	90.000	179.705	6861.00	1739.18	-1724.83	-406.44	40.5006573	-104.5869953	0.00	
9930.00†	90.000	179.705	6861.00	1839.08	-1824.83	-405.92	40.5003829	-104.5869972	0.00	
10030.00†	90.000	179.705	6861.00	1938.99	-1924.83	-405.41	40.5001084	-104.5869990	0.00	
10130.00†	90.000	179.705	6861.00	2038.89	-2024.83	-404.89	40.4998339	-104.5870009	0.00	
10230.00†	90.000	179.705	6861.00	2138.80	-2124.83	-404.38	40.4995594	-104.5870027	0.00	
10330.00†	90.000	179.705	6861.00	2238.70	-2224.82	-403.86	40.4992849	-104.5870046	0.00	
10430.00†	90.000	179.705	6861.00	2338.61	-2324.82	-403.35	40.4990105	-104.5870064	0.00	
10530.00†	90.000	179.705	6861.00	2438.51	-2424.82	-402.83	40.4987360	-104.5870083	0.00	
10630.00†	90.000	179.705	6861.00	2538.42	-2524.82	-402.31	40.4984615	-104.5870101	0.00	
10730.00†	90.000	179.705	6861.00	2638.32	-2624.82	-401.80	40.4981870	-104.5870120	0.00	
10830.00†	90.000	179.705	6861.00	2738.23	-2724.82	-401.28	40.4979125	-104.5870138	0.00	
10930.00†	90.000	179.705	6861.00	2838.13	-2824.82	-400.77	40.4976380	-104.5870157	0.00	
11030.00†	90.000	179.705	6861.00	2938.04	-2924.82	-400.25	40.4973636	-104.5870175	0.00	
11130.00†	90.000	179.705	6861.00	3037.94	-3024.81	-399.74	40.4970891	-104.5870194	0.00	
11230.00†	90.000	179.705	6861.00	3137.85	-3124.81	-399.22	40.4968146	-104.5870212	0.00	
11330.00†	90.000	179.705	6861.00	3237.75	-3224.81	-398.71	40.4965401	-104.5870231	0.00	
11430.00†	90.000	179.705	6861.00	3337.66	-3324.81	-398.19	40.4962656	-104.5870249	0.00	
11530.00†	90.000	179.705	6861.00	3437.56	-3424.81	-397.68	40.4959912	-104.5870268	0.00	
11630.00†	90.000	179.705	6861.00	3537.47	-3524.81	-397.16	40.4957167	-104.5870286	0.00	
11730.00†	90.000	179.705	6861.00	3637.37	-3624.81	-396.65	40.4954422	-104.5870305	0.00	
11830.00†	90.000	179.705	6861.00	3737.28	-3724.80	-396.13	40.4951677	-104.5870323	0.00	
11930.00†	90.000	179.705	6861.00	3837.18	-3824.80	-395.61	40.4948932	-104.5870342	0.00	
12030.00†	90.000	179.705	6861.00	3937.09	-3924.80	-395.10	40.4946187	-104.5870360	0.00	
12130.00†	90.000	179.705	6861.00	4036.99	-4024.80	-394.58	40.4943443	-104.5870379	0.00	
12230.00†	90.000	179.705	6861.00	4136.90	-4124.80	-394.07	40.4940698	-104.5870397	0.00	
12330.00†	90.000	179.705	6861.00	4236.80	-4224.80	-393.55	40.4937953	-104.5870416	0.00	
12430.00†	90.000	179.705	6861.00	4336.71	-4324.80	-393.04	40.4935208	-104.5870434	0.00	
12530.00†	90.000	179.705	6861.00	4436.61	-4424.80	-392.52	40.4932463	-104.5870452	0.00	
12630.00†	90.000	179.705	6861.00	4536.52	-4524.79	-392.01	40.4929719	-104.5870471	0.00	
12730.00†	90.000	179.705	6861.00	4636.42	-4624.79	-391.49	40.4926974	-104.5870489	0.00	
12830.00†	90.000	179.705	6861.00	4736.33	-4724.79	-390.98	40.4924229	-104.5870508	0.00	
12930.00†	90.000	179.705	6861.00	4836.23	-4824.79	-390.46	40.4921484	-104.5870526	0.00	



Planned Wellpath Report
BISHOP A18-724 (REV-A.0) PWP
Page 5 of 7



REFERENCE WELLPATH IDENTIFICATION			
Operator	NOBLE ENERGY, INC	Well	BISHOP A18-724
Field	WELD COUNTY (NOBLE NAD 83 GRID)	API/Legal	
Facility	SEC.07-T06N-R64W	Wellbore	BISHOP A18-724 PWB
Slot	SLOT#15 BISHOP A18-724 (859'FNL & 499'FEL,SEC.07)		

WELLPATH DATA (182 stations) † = interpolated, ‡ = extrapolated station										
MD [ft]	Inclination [°]	Azimuth [°]	TVD [ft]	Vert Sect [ft]	North [ft]	East [ft]	Latitude	Longitude	DLS [°/100ft]	Comments
13030.00†	90.000	179.705	6861.00	4936.14	-4924.79	-389.95	40.4918739	-104.5870545	0.00	
13130.00†	90.000	179.705	6861.00	5036.04	-5024.79	-389.43	40.4915994	-104.5870563	0.00	
13230.00†	90.000	179.705	6861.00	5135.95	-5124.79	-388.91	40.4913250	-104.5870582	0.00	
13330.00†	90.000	179.705	6861.00	5235.85	-5224.78	-388.40	40.4910505	-104.5870600	0.00	
13430.00†	90.000	179.705	6861.00	5335.76	-5324.78	-387.88	40.4907760	-104.5870619	0.00	
13530.00†	90.000	179.705	6861.00	5435.66	-5424.78	-387.37	40.4905015	-104.5870637	0.00	
13630.00†	90.000	179.705	6861.00	5535.57	-5524.78	-386.85	40.4902270	-104.5870656	0.00	
13730.00†	90.000	179.705	6861.00	5635.47	-5624.78	-386.34	40.4899525	-104.5870674	0.00	
13830.00†	90.000	179.705	6861.00	5735.38	-5724.78	-385.82	40.4896781	-104.5870693	0.00	
13930.00†	90.000	179.705	6861.00	5835.28	-5824.78	-385.31	40.4894036	-104.5870711	0.00	
14030.00†	90.000	179.705	6861.00	5935.19	-5924.78	-384.79	40.4891291	-104.5870730	0.00	
14130.00†	90.000	179.705	6861.00	6035.09	-6024.77	-384.28	40.4888546	-104.5870748	0.00	
14230.00†	90.000	179.705	6861.00	6135.00	-6124.77	-383.76	40.4885801	-104.5870767	0.00	
14330.00†	90.000	179.705	6861.00	6234.90	-6224.77	-383.25	40.4883057	-104.5870785	0.00	
14430.00†	90.000	179.705	6861.00	6334.81	-6324.77	-382.73	40.4880312	-104.5870804	0.00	
14530.00†	90.000	179.705	6861.00	6434.71	-6424.77	-382.22	40.4877567	-104.5870822	0.00	
14630.00†	90.000	179.705	6861.00	6534.62	-6524.77	-381.70	40.4874822	-104.5870841	0.00	
14730.00†	90.000	179.705	6861.00	6634.52	-6624.77	-381.18	40.4872077	-104.5870859	0.00	
14830.00†	90.000	179.705	6861.00	6734.43	-6724.76	-380.67	40.4869332	-104.5870878	0.00	
14930.00†	90.000	179.705	6861.00	6834.33	-6824.76	-380.15	40.4866588	-104.5870896	0.00	
15030.00†	90.000	179.705	6861.00	6934.24	-6924.76	-379.64	40.4863843	-104.5870915	0.00	
15130.00†	90.000	179.705	6861.00	7034.14	-7024.76	-379.12	40.4861098	-104.5870933	0.00	
15230.00†	90.000	179.705	6861.00	7134.05	-7124.76	-378.61	40.4858353	-104.5870952	0.00	
15330.00†	90.000	179.705	6861.00	7233.95	-7224.76	-378.09	40.4855608	-104.5870970	0.00	
15430.00†	90.000	179.705	6861.00	7333.86	-7324.76	-377.58	40.4852863	-104.5870989	0.00	
15530.00†	90.000	179.705	6861.00	7433.76	-7424.76	-377.06	40.4850119	-104.5871007	0.00	
15630.00†	90.000	179.705	6861.00	7533.67	-7524.75	-376.55	40.4847374	-104.5871025	0.00	
15730.00†	90.000	179.705	6861.00	7633.57	-7624.75	-376.03	40.4844629	-104.5871044	0.00	
15830.00†	90.000	179.705	6861.00	7733.48	-7724.75	-375.52	40.4841884	-104.5871062	0.00	
15930.00†	90.000	179.705	6861.00	7833.38	-7824.75	-375.00	40.4839139	-104.5871081	0.00	
16030.00†	90.000	179.705	6861.00	7933.29	-7924.75	-374.48	40.4836394	-104.5871099	0.00	
16130.00†	90.000	179.705	6861.00	8033.19	-8024.75	-373.97	40.4833650	-104.5871118	0.00	
16230.00†	90.000	179.705	6861.00	8133.10	-8124.75	-373.45	40.4830905	-104.5871136	0.00	
16330.00†	90.000	179.705	6861.00	8233.00	-8224.74	-372.94	40.4828160	-104.5871155	0.00	
16430.00†	90.000	179.705	6861.00	8332.91	-8324.74	-372.42	40.4825415	-104.5871173	0.00	
16530.00†	90.000	179.705	6861.00	8432.81	-8424.74	-371.91	40.4822670	-104.5871192	0.00	
16630.00†	90.000	179.705	6861.00	8532.72	-8524.74	-371.39	40.4819926	-104.5871210	0.00	
16730.00†	90.000	179.705	6861.00	8632.62	-8624.74	-370.88	40.4817181	-104.5871229	0.00	
16830.00†	90.000	179.705	6861.00	8732.53	-8724.74	-370.36	40.4814436	-104.5871247	0.00	
16930.00†	90.000	179.705	6861.00	8832.43	-8824.74	-369.85	40.4811691	-104.5871266	0.00	
17030.00†	90.000	179.705	6861.00	8932.34	-8924.74	-369.33	40.4808946	-104.5871284	0.00	
17130.00†	90.000	179.705	6861.00	9032.24	-9024.73	-368.82	40.4806201	-104.5871303	0.00	
17230.00†	90.000	179.705	6861.00	9132.15	-9124.73	-368.30	40.4803457	-104.5871321	0.00	
17330.00†	90.000	179.705	6861.00	9232.05	-9224.73	-367.78	40.4800712	-104.5871340	0.00	
17430.00†	90.000	179.705	6861.00	9331.96	-9324.73	-367.27	40.4797967	-104.5871358	0.00	



Planned Wellpath Report

BISHOP A18-724 (REV-A.0) PWP

Page 6 of 7



REFERENCE WELLPATH IDENTIFICATION			
Operator	NOBLE ENERGY, INC	Well	BISHOP A18-724
Field	WELD COUNTY (NOBLE NAD 83 GRID)	API/Legal	
Facility	SEC.07-T06N-R64W	Wellbore	BISHOP A18-724 PWB
Slot	SLOT#15 BISHOP A18-724 (859'FNL & 499'FEL,SEC.07)		

WELLPATH DATA (182 stations) † = interpolated, ‡ = extrapolated station										
MD [ft]	Inclination [°]	Azimuth [°]	TVD [ft]	Vert Sect [ft]	North [ft]	East [ft]	Latitude	Longitude	DLS [°/100ft]	Comments
17530.00†	90.000	179.705	6861.00	9431.86	-9424.73	-366.75	40.4795222	-104.5871377	0.00	
17627.75	90.000	179.705	6861.00‡	9529.52	-9522.48	-366.25	40.4792539	-104.5871395	0.00	BHL

HOLE & CASING SECTIONS - Ref Wellbore: BISHOP A18-724 PWB Ref Wellpath: BISHOP A18-724 (REV-A.0) PWP									
String/Diameter	Start MD [ft]	End MD [ft]	Interval [ft]	Start TVD [ft]	End TVD [ft]	Start N/S [ft]	Start E/W [ft]	End N/S [ft]	End E/W [ft]
9.625in Casing Surface	30.00	1950.00	1920.00	30.00	1950.00	0.00	0.00	0.00	0.00

TARGETS									
Name	MD [ft]	TVD [ft]	North [ft]	East [ft]	Grid East [US ft]	Grid North [US ft]	Latitude	Longitude	Shape
OGDP 1 SEC.07-T06N-R64W	N/A	-1.00	0.77	75.08	3254380.72	1428262.61	40.5053800	-104.5852000	polygon
	2D Polygon: dimensions not calculated								
OGDP 1 SEC.18-T06N-R64W	N/A	-1.00	0.77	75.08	3254380.72	1428262.61	40.5053800	-104.5852000	polygon
	2D Polygon: dimensions not calculated								
2) BISHOP A18-724 BHL Rev-1 (200'FSL & 947'FEL,SEC.18)	17627.75	6861.00	-9522.48	-366.25	3253939.40	1418739.70	40.4792539	-104.5871395	point
1) BISHOP A18-724 LP Rev-1 (200'FNL & 911'FEL,SEC.07)	7454.11	6861.00	651.03	-418.68	3253886.97	1428912.85	40.5071787	-104.5869514	point

SURVEY PROGRAM - Ref Wellbore: BISHOP A18-724 PWB Ref Wellpath: BISHOP A18-724 (REV-A.0) PWP				
Start MD [ft]	End MD [ft]	Positional Uncertainty Model	Log Name/Comment	Wellbore
30.00	17627.75	OWSG MWD rev2 (MS+IFR1)		BISHOP A18-724 PWB



Planned Wellpath Report
BISHOP A18-724 (REV-A.0) PWP
Page 7 of 7



REFERENCE WELLPATH IDENTIFICATION			
Operator	NOBLE ENERGY, INC	Well	BISHOP A18-724
Field	WELD COUNTY (NOBLE NAD 83 GRID)	API/Legal	
Facility	SEC.07-T06N-R64W	Wellbore	BISHOP A18-724 PWB
Slot	SLOT#15 BISHOP A18-724 (859'FNL & 499'FEL,SEC.07)		

DESIGN COMMENTS				
MD [ft]	Inclination [°]	Azimuth [°]	TVD [ft]	Comment
30.00	0.000	344.758	30.00	SHL
2000.00	0.000	344.758	2000.00	End of Tangent
3016.20	20.324	344.758	2995.02	End of Build (XS)
6236.24	20.324	344.758	6014.60	KOP
7454.11	90.000	179.705	6861.00	LP/TPZ
17627.75	90.000	179.705	6861.00	BHL