

NOBLE ENERGY, INC



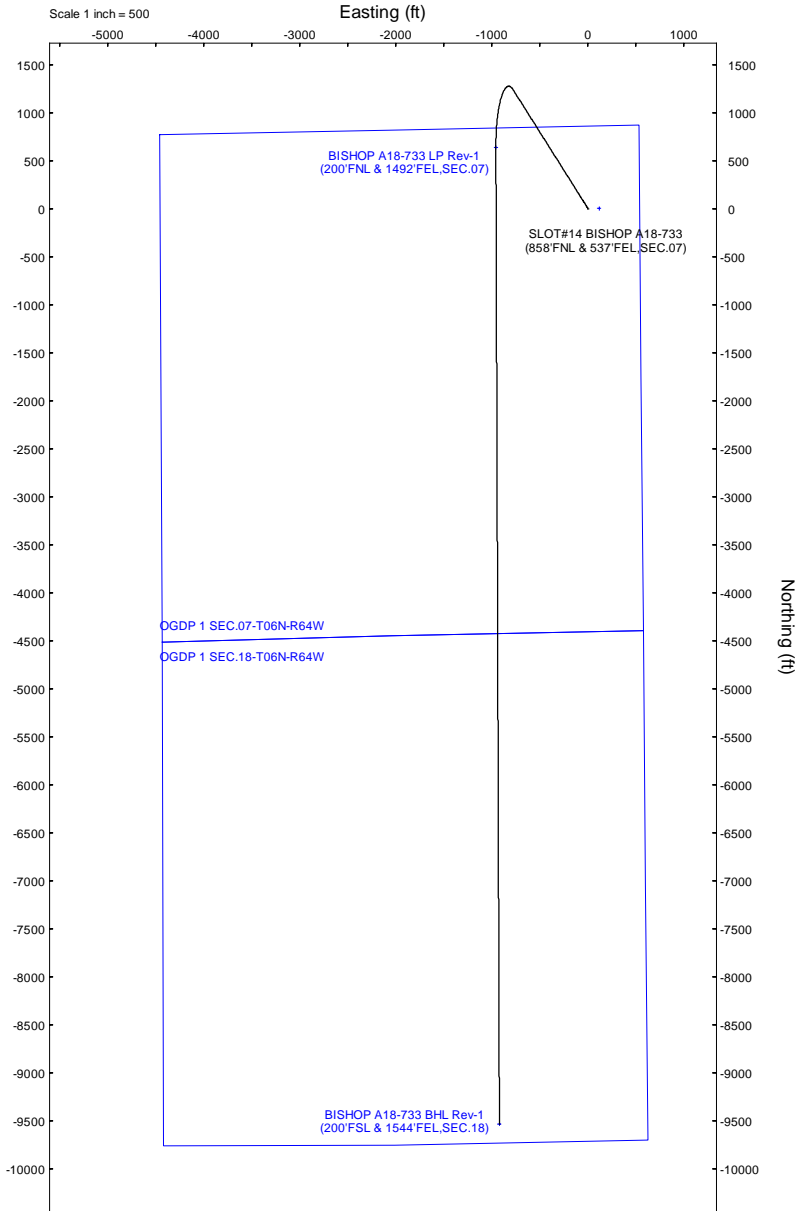
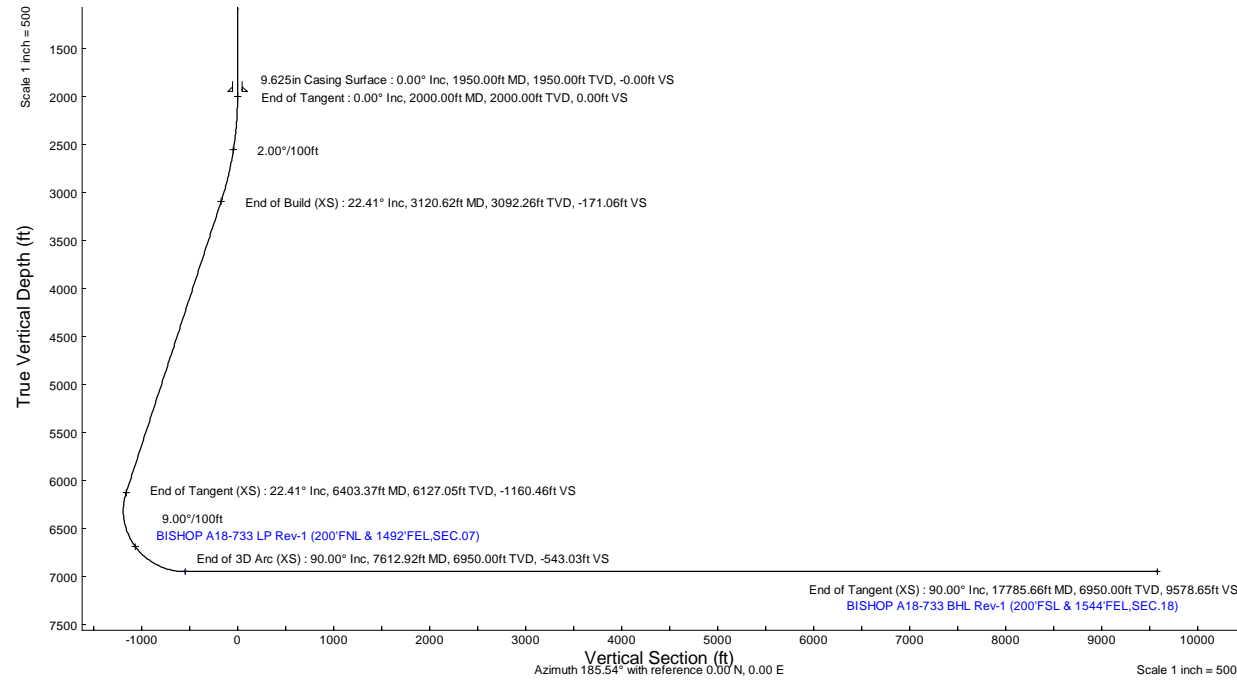
Location:	COLORADO	Slot:	SLOT#14 BISHOP A18-733 (858°FNL & 537°FEL,SEC.07)
Field:	WELD COUNTY (NOBLE NAD 83 GRID)	Well:	BISHOP A18-733
Facility:	SEC.07-T06N-R64W	Wellbore:	BISHOP A18-733 PWB
Plot reference wellpath is BISHOP A18-733 (REV-A.0) PWP		Grid System: NAD83 / Lambert Colorado SP, Northern Zone (501), US feet	
True vertical depths are referenced to (4740'GL+30'KB@4770'RKB) (RKB)		North Reference: Grid north	
Reference wellpath measured depths are referenced to (4740'GL+30'KB@4770'RKB) (RKB)		Scale: True distance	
(4740'GL+30'KB@4770'RKB) (RKB) to Mean Sea Level: 4770 feet		Coordinates are in feet referenced to Slot	
Mean Sea Level to Ground level (At Slot: SLOT#14 BISHOP A18-733 (858°FNL & 537°FEL,SEC.07)): 0 feet		Depths are in feet	
Offset wellpath MDs are referenced to each path's default MD datum		Created by: guenaler on 2023-01-13; Database: WA_Denver	

Location Information					
Facility Name			Grid East (US ft)	Grid North (US ft)	Latitude
SEC.07-T06N-R64W			3254380.716	1428262.611	40°30'19.3680"N
Slot			Local N (ft)	Local E (ft)	Longitude
SLOT#14 BISHOP A18-733 (858°FNL & 537°FEL,SEC.07)			-1.18	-114.01	104°35'8.7200"W
(4740'GL+30'KB@4770'RKB) (RKB) to Ground level (At Slot: SLOT#14 BISHOP A18-733 (858°FNL & 537°FEL,SEC.07))			Grid East (US ft)	Grid North (US ft)	Latitude
Mean Sea Level to Ground level (At Slot: SLOT#14 BISHOP A18-733 (858°FNL & 537°FEL,SEC.07))			3254266.711	1428261.435	40°30'19.3680"N
(4740'GL+30'KB@4770'RKB) (RKB) to Mean Sea Level			4770ft		

Well Profile Data							
Design Comment	MD (ft)	Inc (°)	Az (°)	TVD (ft)	Local N (ft)	Local E (ft)	DLS (°/100ft)
Tie On	30.00	0.000	327.769	30.00	0.00	0.00	0.00
End of Tangent	2000.00	0.000	327.769	2000.00	0.00	0.00	0.00
End of Build (XS)	3120.62	22.412	327.769	3092.26	183.05	-115.41	2.00
End of Tangent (XS)	6403.37	22.412	327.769	6127.05	1241.80	-782.93	0.00
End of 3D Arc (XS)	7612.92	90.000	179.794	6950.00	638.72	-960.75	9.00
End of Tangent (XS)	17785.66	90.000	179.794	6950.00	-9533.96	-924.26	0.00

Targets							
Name	MD (ft)	TVD (ft)	Local N (ft)	Local E (ft)	Grid East (US ft)	Grid North (US ft)	Latitude
OGDP 1 SEC.07-T06N-R64W	N/A	-2.00	1.18	114.01	3254380.72	1428262.61	40°30'19.3680"N
OGDP 1 SEC.18-T06N-R64W	N/A	-2.00	1.18	114.01	3254380.72	1428262.61	40°30'19.3680"N
BISHOP A18-733 BHL Rev-1 (200°FSL & 1544°FEL,SEC.18)	17785.66	6950.00	-9533.96	-924.26	3253342.48	1418727.81	40°28'45.2573"N
BISHOP A18-733 LP Rev-1 (200°FNL & 1492°FEL,SEC.07)	7612.92	6950.00	638.72	-960.75	3253305.99	1428900.13	40°30'25.7768"N

Survey Program				
Start MD (ft)	End MD (ft)	Tool	Model	Wellbore
30.00	17785.66	OWSG MWD rev2	OWSG MWD rev2 (MS+IFR1)	BISHOP A18-733 PWB



N
↑
True
↓
Magnetic

W ← → E

BGGM (1900.0 to 2024.0) Dip: 66.71° Field: 51735.9 nT
Magnetic North is 7.44 degrees East of True North (at 1/13/2023)
Grid North is 0.59 degrees East of True North
To correct azimuth from True to Grid subtract 0.59 degrees
To correct azimuth from Magnetic to Grid add 6.85 degrees



Planned Wellpath Report
BISHOP A18-733 (REV-A.0) PWP
Page 1 of 7



REFERENCE WELLPATH IDENTIFICATION			
Operator	NOBLE ENERGY, INC	Well	BISHOP A18-733
Field	WELD COUNTY (NOBLE NAD 83 GRID)	API/Legal	
Facility	SEC.07-T06N-R64W	Wellbore	BISHOP A18-733 PWB
Slot	SLOT#14 BISHOP A18-733 (858'FNL & 537'FEL,SEC.07)		

REPORT SETUP INFORMATION			
Projection System	NAD83 / Lambert Colorado SP, Northern Zone (501), US feet	Software System	WellArchitect® 6.0
North Reference	Grid	User	Guenaler
Scale	0.999967	Report Generated	1/13/2023 at 3:45:30 PM
Convergence at slot	0.59° East	Database	WA_Denver

WELLPATH LOCATION						
	Local coordinates		Grid coordinates		Geographic coordinates	
	North[ft]	East[ft]	Easting[US ft]	Northing[US ft]	Latitude	Longitude
Slot Location	-1.18	-114.01	3254266.71	1428261.44	40.5053800°	-104.5856100°
Facility Reference Pt			3254380.72	1428262.61	40.5053800°	-104.5852000°
Field Reference Pt			3000000.00	4454105.15	48.7761986°	-105.5000000°

WELLPATH DATUM			
Calculation method	Minimum curvature	(4740'GL+30'KB@4770'RKB) (RKB) to Facility Vertical Datum	4770.00ft
Horizontal Reference Pt	Slot	(4740'GL+30'KB@4770'RKB) (RKB) to Mean Sea Level	4770.00ft
Vertical Reference Pt	(4740'GL+30'KB@4770'RKB) (RKB)	(4740'GL+30'KB@4770'RKB) (RKB) to Ground Level at Slot (SLOT#14 BISHOP A18-733 (858'FNL & 537'FEL,SEC.07))	4770.00ft
MD Reference Pt	(4740'GL+30'KB@4770'RKB) (RKB)	Section Origin	N 0.00, E 0.00 ft
Field Vertical Reference	Mean Sea Level	Section Azimuth	185.54°



Planned Wellpath Report
BISHOP A18-733 (REV-A.0) PWP
Page 2 of 7



REFERENCE WELLPATH IDENTIFICATION			
Operator	NOBLE ENERGY, INC	Well	BISHOP A18-733
Field	WELD COUNTY (NOBLE NAD 83 GRID)	API/Legal	
Facility	SEC.07-T06N-R64W	Wellbore	BISHOP A18-733 PWB
Slot	SLOT#14 BISHOP A18-733 (858'FNL & 537'FEL,SEC.07)		

WELLPATH DATA (184 stations) † = interpolated, ‡ = extrapolated station										
MD [ft]	Inclination [°]	Azimuth [°]	TVD [ft]	Vert Sect [ft]	North [ft]	East [ft]	Latitude	Longitude	DLS [°/100ft]	Comments
0.00†	0.000	327.769	0.00	0.00	0.00	0.00	40.5053800	-104.5856100	0.00	
30.00	0.000	327.769	30.00	0.00	0.00	0.00	40.5053800	-104.5856100	0.00	Tie On
130.00†	0.000	327.769	130.00	0.00	0.00	0.00	40.5053800	-104.5856100	0.00	
230.00†	0.000	327.769	230.00	0.00	0.00	0.00	40.5053800	-104.5856100	0.00	
330.00†	0.000	327.769	330.00	0.00	0.00	0.00	40.5053800	-104.5856100	0.00	
430.00†	0.000	327.769	430.00	0.00	0.00	0.00	40.5053800	-104.5856100	0.00	
530.00†	0.000	327.769	530.00	0.00	0.00	0.00	40.5053800	-104.5856100	0.00	
630.00†	0.000	327.769	630.00	0.00	0.00	0.00	40.5053800	-104.5856100	0.00	
730.00†	0.000	327.769	730.00	0.00	0.00	0.00	40.5053800	-104.5856100	0.00	
830.00†	0.000	327.769	830.00	0.00	0.00	0.00	40.5053800	-104.5856100	0.00	
930.00†	0.000	327.769	930.00	0.00	0.00	0.00	40.5053800	-104.5856100	0.00	
1030.00†	0.000	327.769	1030.00	0.00	0.00	0.00	40.5053800	-104.5856100	0.00	
1130.00†	0.000	327.769	1130.00	0.00	0.00	0.00	40.5053800	-104.5856100	0.00	
1230.00†	0.000	327.769	1230.00	0.00	0.00	0.00	40.5053800	-104.5856100	0.00	
1330.00†	0.000	327.769	1330.00	0.00	0.00	0.00	40.5053800	-104.5856100	0.00	
1430.00†	0.000	327.769	1430.00	0.00	0.00	0.00	40.5053800	-104.5856100	0.00	
1530.00†	0.000	327.769	1530.00	0.00	0.00	0.00	40.5053800	-104.5856100	0.00	
1630.00†	0.000	327.769	1630.00	0.00	0.00	0.00	40.5053800	-104.5856100	0.00	
1730.00†	0.000	327.769	1730.00	0.00	0.00	0.00	40.5053800	-104.5856100	0.00	
1830.00†	0.000	327.769	1830.00	0.00	0.00	0.00	40.5053800	-104.5856100	0.00	
1930.00†	0.000	327.769	1930.00	0.00	0.00	0.00	40.5053800	-104.5856100	0.00	
2000.00	0.000	327.769	2000.00	0.00	0.00	0.00	40.5053800	-104.5856100	0.00	End of Tangent
2030.00†	0.600	327.769	2030.00	-0.12	0.13	-0.08	40.5053804	-104.5856103	2.00	
2130.00†	2.600	327.769	2129.96	-2.33	2.49	-1.57	40.5053869	-104.5856156	2.00	
2230.00†	4.600	327.769	2229.75	-7.29	7.81	-4.92	40.5054016	-104.5856274	2.00	
2330.00†	6.600	327.769	2329.27	-15.01	16.06	-10.13	40.5054244	-104.5856458	2.00	
2430.00†	8.600	327.769	2428.39	-25.46	27.25	-17.18	40.5054553	-104.5856708	2.00	
2530.00†	10.600	327.769	2526.98	-38.64	41.35	-26.07	40.5054942	-104.5857022	2.00	
2630.00†	12.600	327.769	2624.93	-54.54	58.36	-36.80	40.5055412	-104.5857401	2.00	
2730.00†	14.600	327.769	2722.13	-73.13	78.25	-49.34	40.5055962	-104.5857845	2.00	
2830.00†	16.600	327.769	2818.44	-94.38	101.00	-63.68	40.5056590	-104.5858352	2.00	
2930.00†	18.600	327.769	2913.75	-118.28	126.58	-79.80	40.5057297	-104.5858923	2.00	
3030.00†	20.600	327.769	3007.95	-144.80	154.95	-97.69	40.5058081	-104.5859555	2.00	
3120.62	22.412	327.769	3092.26	-171.06	183.05	-115.41	40.5058857	-104.5860182	2.00	End of Build (XS)
3130.00†	22.412	327.769	3100.93	-173.89	186.08	-117.32	40.5058940	-104.5860250	0.00	
3230.00†	22.412	327.769	3193.38	-204.03	218.33	-137.65	40.5059831	-104.5860969	0.00	
3330.00†	22.412	327.769	3285.82	-234.17	250.58	-157.99	40.5060722	-104.5861688	0.00	
3430.00†	22.412	327.769	3378.27	-264.31	282.83	-178.32	40.5061613	-104.5862407	0.00	
3530.00†	22.412	327.769	3470.72	-294.45	315.08	-198.65	40.5062504	-104.5863126	0.00	
3630.00†	22.412	327.769	3563.16	-324.58	347.34	-218.99	40.5063395	-104.5863846	0.00	
3730.00†	22.412	327.769	3655.61	-354.72	379.59	-239.32	40.5064286	-104.5864565	0.00	
3830.00†	22.412	327.769	3748.06	-384.86	411.84	-259.66	40.5065177	-104.5865284	0.00	
3930.00†	22.412	327.769	3840.50	-415.00	444.09	-279.99	40.5066068	-104.5866003	0.00	
4030.00†	22.412	327.769	3932.95	-445.14	476.34	-300.32	40.5066959	-104.5866723	0.00	
4130.00†	22.412	327.769	4025.39	-475.28	508.60	-320.66	40.5067850	-104.5867442	0.00	



Planned Wellpath Report
BISHOP A18-733 (REV-A.0) PWP
Page 3 of 7



REFERENCE WELLPATH IDENTIFICATION			
Operator	NOBLE ENERGY, INC	Well	BISHOP A18-733
Field	WELD COUNTY (NOBLE NAD 83 GRID)	API/Legal	
Facility	SEC.07-T06N-R64W	Wellbore	BISHOP A18-733 PWB
Slot	SLOT#14 BISHOP A18-733 (858'FNL & 537'FEL,SEC.07)		

WELLPATH DATA (184 stations) † = interpolated, ‡ = extrapolated station										
MD [ft]	Inclination [°]	Azimuth [°]	TVD [ft]	Vert Sect [ft]	North [ft]	East [ft]	Latitude	Longitude	DLS [°/100ft]	Comments
4230.00†	22.412	327.769	4117.84	-505.42	540.85	-340.99	40.5068741	-104.5868161	0.00	
4330.00†	22.412	327.769	4210.29	-535.56	573.10	-361.33	40.5069632	-104.5868880	0.00	
4430.00†	22.412	327.769	4302.73	-565.70	605.35	-381.66	40.5070523	-104.5869600	0.00	
4530.00†	22.412	327.769	4395.18	-595.84	637.60	-402.00	40.5071414	-104.5870319	0.00	
4630.00†	22.412	327.769	4487.63	-625.98	669.85	-422.33	40.5072305	-104.5871038	0.00	
4730.00†	22.412	327.769	4580.07	-656.12	702.11	-442.66	40.5073196	-104.5871757	0.00	
4830.00†	22.412	327.769	4672.52	-686.26	734.36	-463.00	40.5074087	-104.5872477	0.00	
4930.00†	22.412	327.769	4764.97	-716.40	766.61	-483.33	40.5074978	-104.5873196	0.00	
5030.00†	22.412	327.769	4857.41	-746.54	798.86	-503.67	40.5075869	-104.5873915	0.00	
5130.00†	22.412	327.769	4949.86	-776.67	831.11	-524.00	40.5076760	-104.5874634	0.00	
5230.00†	22.412	327.769	5042.31	-806.81	863.37	-544.33	40.5077651	-104.5875354	0.00	
5330.00†	22.412	327.769	5134.75	-836.95	895.62	-564.67	40.5078542	-104.5876073	0.00	
5430.00†	22.412	327.769	5227.20	-867.09	927.87	-585.00	40.5079433	-104.5876792	0.00	
5530.00†	22.412	327.769	5319.64	-897.23	960.12	-605.34	40.5080324	-104.5877512	0.00	
5630.00†	22.412	327.769	5412.09	-927.37	992.37	-625.67	40.5081215	-104.5878231	0.00	
5730.00†	22.412	327.769	5504.54	-957.51	1024.63	-646.01	40.5082106	-104.5878950	0.00	
5830.00†	22.412	327.769	5596.98	-987.65	1056.88	-666.34	40.5082997	-104.5879669	0.00	
5930.00†	22.412	327.769	5689.43	-1017.79	1089.13	-686.67	40.5083887	-104.5880389	0.00	
6030.00†	22.412	327.769	5781.88	-1047.93	1121.38	-707.01	40.5084778	-104.5881108	0.00	
6130.00†	22.412	327.769	5874.32	-1078.07	1153.63	-727.34	40.5085669	-104.5881827	0.00	
6230.00†	22.412	327.769	5966.77	-1108.21	1185.89	-747.68	40.5086560	-104.5882547	0.00	
6330.00†	22.412	327.769	6059.22	-1138.35	1218.14	-768.01	40.5087451	-104.5883266	0.00	
6403.37	22.412	327.769	6127.05	-1160.46	1241.80	-782.93	40.5088105	-104.5883794	0.00	End of Tangent (XS)
6430.00†	20.469	323.928	6151.83	-1167.96	1249.86	-788.38	40.5088328	-104.5883987	9.00	
6530.00†	14.388	301.308	6247.30	-1186.47	1270.49	-809.33	40.5088900	-104.5884732	9.00	
6630.00†	12.430	262.636	6344.76	-1189.47	1275.58	-830.67	40.5089046	-104.5885498	9.00	
6730.00†	16.171	228.752	6441.81	-1176.90	1265.00	-851.85	40.5088761	-104.5886263	9.00	
6830.00†	22.977	210.847	6536.06	-1149.05	1239.00	-872.37	40.5088053	-104.5887011	9.00	
6930.00†	30.882	201.244	6625.19	-1106.61	1198.24	-891.72	40.5086940	-104.5887722	9.00	
7030.00†	39.227	195.334	6707.00	-1050.63	1143.72	-909.42	40.5085449	-104.5888378	9.00	
7130.00†	47.778	191.241	6779.48	-982.49	1076.77	-925.03	40.5083615	-104.5888964	9.00	
7230.00†	56.440	188.137	6840.85	-903.86	999.05	-938.17	40.5081486	-104.5889466	9.00	
7330.00†	65.165	185.604	6889.59	-816.68	912.46	-948.52	40.5079112	-104.5889870	9.00	
7430.00†	73.928	183.407	6924.50	-723.10	819.15	-955.82	40.5076553	-104.5890167	9.00	
7530.00†	82.710	181.398	6944.73	-625.42	721.41	-959.90	40.5073872	-104.5890349	9.00	
7612.92	90.000	179.794	6950.00†	-543.03	638.72	-960.75	40.5071602	-104.5890411	9.00	End of 3D Arc (XS)
7630.00†	90.000	179.794	6950.00	-526.04	621.64	-960.69	40.5071134	-104.5890415	0.00	
7730.00†	90.000	179.794	6950.00	-426.54	521.64	-960.33	40.5068389	-104.5890439	0.00	
7830.00†	90.000	179.794	6950.00	-327.04	421.64	-959.97	40.5065644	-104.5890463	0.00	
7930.00†	90.000	179.794	6950.00	-227.55	321.64	-959.61	40.5062899	-104.5890487	0.00	
8030.00†	90.000	179.794	6950.00	-128.05	221.64	-959.26	40.5060154	-104.5890511	0.00	
8130.00†	90.000	179.794	6950.00	-28.55	121.64	-958.90	40.5057410	-104.5890535	0.00	
8230.00†	90.000	179.794	6950.00	70.95	21.64	-958.54	40.5054665	-104.5890559	0.00	
8330.00†	90.000	179.794	6950.00	170.45	-78.36	-958.18	40.5051920	-104.5890583	0.00	
8430.00†	90.000	179.794	6950.00	269.95	-178.36	-957.82	40.5049175	-104.5890607	0.00	



Planned Wellpath Report
BISHOP A18-733 (REV-A.0) PWP
Page 4 of 7



REFERENCE WELLPATH IDENTIFICATION			
Operator	NOBLE ENERGY, INC	Well	BISHOP A18-733
Field	WELD COUNTY (NOBLE NAD 83 GRID)	API/Legal	
Facility	SEC.07-T06N-R64W	Wellbore	BISHOP A18-733 PWB
Slot	SLOT#14 BISHOP A18-733 (858'FNL & 537'FEL,SEC.07)		

WELLPATH DATA (184 stations) † = interpolated, ‡ = extrapolated station										
MD [ft]	Inclination [°]	Azimuth [°]	TVD [ft]	Vert Sect [ft]	North [ft]	East [ft]	Latitude	Longitude	DLS [°/100ft]	Comments
8530.00†	90.000	179.794	6950.00	369.44	-278.36	-957.46	40.5046430	-104.5890631	0.00	
8630.00†	90.000	179.794	6950.00	468.94	-378.35	-957.10	40.5043686	-104.5890655	0.00	
8730.00†	90.000	179.794	6950.00	568.44	-478.35	-956.74	40.5040941	-104.5890679	0.00	
8830.00†	90.000	179.794	6950.00	667.94	-578.35	-956.39	40.5038196	-104.5890703	0.00	
8930.00†	90.000	179.794	6950.00	767.44	-678.35	-956.03	40.5035451	-104.5890727	0.00	
9030.00†	90.000	179.794	6950.00	866.93	-778.35	-955.67	40.5032707	-104.5890751	0.00	
9130.00†	90.000	179.794	6950.00	966.43	-878.35	-955.31	40.5029962	-104.5890776	0.00	
9230.00†	90.000	179.794	6950.00	1065.93	-978.35	-954.95	40.5027217	-104.5890800	0.00	
9330.00†	90.000	179.794	6950.00	1165.43	-1078.35	-954.59	40.5024472	-104.5890824	0.00	
9430.00†	90.000	179.794	6950.00	1264.93	-1178.35	-954.23	40.5021727	-104.5890848	0.00	
9530.00†	90.000	179.794	6950.00	1364.42	-1278.35	-953.88	40.5018983	-104.5890872	0.00	
9630.00†	90.000	179.794	6950.00	1463.92	-1378.35	-953.52	40.5016238	-104.5890896	0.00	
9730.00†	90.000	179.794	6950.00	1563.42	-1478.35	-953.16	40.5013493	-104.5890920	0.00	
9830.00†	90.000	179.794	6950.00	1662.92	-1578.35	-952.80	40.5010748	-104.5890944	0.00	
9930.00†	90.000	179.794	6950.00	1762.42	-1678.35	-952.44	40.5008003	-104.5890968	0.00	
10030.00†	90.000	179.794	6950.00	1861.92	-1778.35	-952.08	40.5005259	-104.5890992	0.00	
10130.00†	90.000	179.794	6950.00	1961.41	-1878.34	-951.72	40.5002514	-104.5891016	0.00	
10230.00†	90.000	179.794	6950.00	2060.91	-1978.34	-951.36	40.4999769	-104.5891040	0.00	
10330.00†	90.000	179.794	6950.00	2160.41	-2078.34	-951.01	40.4997024	-104.5891064	0.00	
10430.00†	90.000	179.794	6950.00	2259.91	-2178.34	-950.65	40.4994279	-104.5891088	0.00	
10530.00†	90.000	179.794	6950.00	2359.41	-2278.34	-950.29	40.4991535	-104.5891112	0.00	
10630.00†	90.000	179.794	6950.00	2458.90	-2378.34	-949.93	40.4988790	-104.5891136	0.00	
10730.00†	90.000	179.794	6950.00	2558.40	-2478.34	-949.57	40.4986045	-104.5891160	0.00	
10830.00†	90.000	179.794	6950.00	2657.90	-2578.34	-949.21	40.4983300	-104.5891184	0.00	
10930.00†	90.000	179.794	6950.00	2757.40	-2678.34	-948.85	40.4980555	-104.5891208	0.00	
11030.00†	90.000	179.794	6950.00	2856.90	-2778.34	-948.49	40.4977811	-104.5891232	0.00	
11130.00†	90.000	179.794	6950.00	2956.39	-2878.34	-948.14	40.4975066	-104.5891256	0.00	
11230.00†	90.000	179.794	6950.00	3055.89	-2978.34	-947.78	40.4972321	-104.5891280	0.00	
11330.00†	90.000	179.794	6950.00	3155.39	-3078.34	-947.42	40.4969576	-104.5891304	0.00	
11430.00†	90.000	179.794	6950.00	3254.89	-3178.34	-947.06	40.4966832	-104.5891328	0.00	
11530.00†	90.000	179.794	6950.00	3354.39	-3278.34	-946.70	40.4964087	-104.5891352	0.00	
11630.00†	90.000	179.794	6950.00	3453.89	-3378.34	-946.34	40.4961342	-104.5891376	0.00	
11730.00†	90.000	179.794	6950.00	3553.38	-3478.33	-945.98	40.4958597	-104.5891401	0.00	
11830.00†	90.000	179.794	6950.00	3652.88	-3578.33	-945.63	40.4955852	-104.5891425	0.00	
11930.00†	90.000	179.794	6950.00	3752.38	-3678.33	-945.27	40.4953108	-104.5891449	0.00	
12030.00†	90.000	179.794	6950.00	3851.88	-3778.33	-944.91	40.4950363	-104.5891473	0.00	
12130.00†	90.000	179.794	6950.00	3951.38	-3878.33	-944.55	40.4947618	-104.5891497	0.00	
12230.00†	90.000	179.794	6950.00	4050.87	-3978.33	-944.19	40.4944873	-104.5891521	0.00	
12330.00†	90.000	179.794	6950.00	4150.37	-4078.33	-943.83	40.4942128	-104.5891545	0.00	
12430.00†	90.000	179.794	6950.00	4249.87	-4178.33	-943.47	40.4939384	-104.5891569	0.00	
12530.00†	90.000	179.794	6950.00	4349.37	-4278.33	-943.11	40.4936639	-104.5891593	0.00	
12630.00†	90.000	179.794	6950.00	4448.87	-4378.33	-942.76	40.4933894	-104.5891617	0.00	
12730.00†	90.000	179.794	6950.00	4548.36	-4478.33	-942.40	40.4931149	-104.5891641	0.00	
12830.00†	90.000	179.794	6950.00	4647.86	-4578.33	-942.04	40.4928404	-104.5891665	0.00	
12930.00†	90.000	179.794	6950.00	4747.36	-4678.33	-941.68	40.4925660	-104.5891689	0.00	



Planned Wellpath Report
BISHOP A18-733 (REV-A.0) PWP
Page 5 of 7



REFERENCE WELLPATH IDENTIFICATION			
Operator	NOBLE ENERGY, INC	Well	BISHOP A18-733
Field	WELD COUNTY (NOBLE NAD 83 GRID)	API/Legal	
Facility	SEC.07-T06N-R64W	Wellbore	BISHOP A18-733 PWB
Slot	SLOT#14 BISHOP A18-733 (858'FNL & 537'FEL,SEC.07)		

WELLPATH DATA (184 stations) † = interpolated, ‡ = extrapolated station										
MD [ft]	Inclination [°]	Azimuth [°]	TVD [ft]	Vert Sect [ft]	North [ft]	East [ft]	Latitude	Longitude	DLS [°/100ft]	Comments
13030.00†	90.000	179.794	6950.00	4846.86	-4778.33	-941.32	40.4922915	-104.5891713	0.00	
13130.00†	90.000	179.794	6950.00	4946.36	-4878.33	-940.96	40.4920170	-104.5891737	0.00	
13230.00†	90.000	179.794	6950.00	5045.86	-4978.32	-940.60	40.4917425	-104.5891761	0.00	
13330.00†	90.000	179.794	6950.00	5145.35	-5078.32	-940.25	40.4914680	-104.5891785	0.00	
13430.00†	90.000	179.794	6950.00	5244.85	-5178.32	-939.89	40.4911936	-104.5891809	0.00	
13530.00†	90.000	179.794	6950.00	5344.35	-5278.32	-939.53	40.4909191	-104.5891833	0.00	
13630.00†	90.000	179.794	6950.00	5443.85	-5378.32	-939.17	40.4906446	-104.5891857	0.00	
13730.00†	90.000	179.794	6950.00	5543.35	-5478.32	-938.81	40.4903701	-104.5891881	0.00	
13830.00†	90.000	179.794	6950.00	5642.84	-5578.32	-938.45	40.4900956	-104.5891905	0.00	
13930.00†	90.000	179.794	6950.00	5742.34	-5678.32	-938.09	40.4898212	-104.5891929	0.00	
14030.00†	90.000	179.794	6950.00	5841.84	-5778.32	-937.73	40.4895467	-104.5891953	0.00	
14130.00†	90.000	179.794	6950.00	5941.34	-5878.32	-937.38	40.4892722	-104.5891977	0.00	
14230.00†	90.000	179.794	6950.00	6040.84	-5978.32	-937.02	40.4889977	-104.5892001	0.00	
14330.00†	90.000	179.794	6950.00	6140.33	-6078.32	-936.66	40.4887232	-104.5892025	0.00	
14430.00†	90.000	179.794	6950.00	6239.83	-6178.32	-936.30	40.4884488	-104.5892049	0.00	
14530.00†	90.000	179.794	6950.00	6339.33	-6278.32	-935.94	40.4881743	-104.5892073	0.00	
14630.00†	90.000	179.794	6950.00	6438.83	-6378.32	-935.58	40.4878998	-104.5892097	0.00	
14730.00†	90.000	179.794	6950.00	6538.33	-6478.32	-935.22	40.4876253	-104.5892122	0.00	
14830.00†	90.000	179.794	6950.00	6637.83	-6578.31	-934.86	40.4873508	-104.5892146	0.00	
14930.00†	90.000	179.794	6950.00	6737.32	-6678.31	-934.51	40.4870764	-104.5892170	0.00	
15030.00†	90.000	179.794	6950.00	6836.82	-6778.31	-934.15	40.4868019	-104.5892194	0.00	
15130.00†	90.000	179.794	6950.00	6936.32	-6878.31	-933.79	40.4865274	-104.5892218	0.00	
15230.00†	90.000	179.794	6950.00	7035.82	-6978.31	-933.43	40.4862529	-104.5892242	0.00	
15330.00†	90.000	179.794	6950.00	7135.32	-7078.31	-933.07	40.4859784	-104.5892266	0.00	
15430.00†	90.000	179.794	6950.00	7234.81	-7178.31	-932.71	40.4857040	-104.5892290	0.00	
15530.00†	90.000	179.794	6950.00	7334.31	-7278.31	-932.35	40.4854295	-104.5892314	0.00	
15630.00†	90.000	179.794	6950.00	7433.81	-7378.31	-932.00	40.4851550	-104.5892338	0.00	
15730.00†	90.000	179.794	6950.00	7533.31	-7478.31	-931.64	40.4848805	-104.5892362	0.00	
15830.00†	90.000	179.794	6950.00	7632.81	-7578.31	-931.28	40.4846060	-104.5892386	0.00	
15930.00†	90.000	179.794	6950.00	7732.30	-7678.31	-930.92	40.4843316	-104.5892410	0.00	
16030.00†	90.000	179.794	6950.00	7831.80	-7778.31	-930.56	40.4840571	-104.5892434	0.00	
16130.00†	90.000	179.794	6950.00	7931.30	-7878.31	-930.20	40.4837826	-104.5892458	0.00	
16230.00†	90.000	179.794	6950.00	8030.80	-7978.31	-929.84	40.4835081	-104.5892482	0.00	
16330.00†	90.000	179.794	6950.00	8130.30	-8078.30	-929.48	40.4832336	-104.5892506	0.00	
16430.00†	90.000	179.794	6950.00	8229.80	-8178.30	-929.13	40.4829592	-104.5892530	0.00	
16530.00†	90.000	179.794	6950.00	8329.29	-8278.30	-928.77	40.4826847	-104.5892554	0.00	
16630.00†	90.000	179.794	6950.00	8428.79	-8378.30	-928.41	40.4824102	-104.5892578	0.00	
16730.00†	90.000	179.794	6950.00	8528.29	-8478.30	-928.05	40.4821357	-104.5892602	0.00	
16830.00†	90.000	179.794	6950.00	8627.79	-8578.30	-927.69	40.4818612	-104.5892626	0.00	
16930.00†	90.000	179.794	6950.00	8727.29	-8678.30	-927.33	40.4815868	-104.5892650	0.00	
17030.00†	90.000	179.794	6950.00	8826.78	-8778.30	-926.97	40.4813123	-104.5892674	0.00	
17130.00†	90.000	179.794	6950.00	8926.28	-8878.30	-926.61	40.4810378	-104.5892698	0.00	
17230.00†	90.000	179.794	6950.00	9025.78	-8978.30	-926.26	40.4807633	-104.5892722	0.00	
17330.00†	90.000	179.794	6950.00	9125.28	-9078.30	-925.90	40.4804888	-104.5892746	0.00	
17430.00†	90.000	179.794	6950.00	9224.78	-9178.30	-925.54	40.4802144	-104.5892770	0.00	



Planned Wellpath Report

BISHOP A18-733 (REV-A.0) PWP

Page 6 of 7



REFERENCE WELLPATH IDENTIFICATION			
Operator	NOBLE ENERGY, INC	Well	BISHOP A18-733
Field	WELD COUNTY (NOBLE NAD 83 GRID)	API/Legal	
Facility	SEC.07-T06N-R64W	Wellbore	BISHOP A18-733 PWB
Slot	SLOT#14 BISHOP A18-733 (858'FNL & 537'FEL,SEC.07)		

WELLPATH DATA (184 stations) † = interpolated, ‡ = extrapolated station										
MD [ft]	Inclination [°]	Azimuth [°]	TVD [ft]	Vert Sect [ft]	North [ft]	East [ft]	Latitude	Longitude	DLS [°/100ft]	Comments
17530.00†	90.000	179.794	6950.00	9324.27	-9278.30	-925.18	40.4799399	-104.5892794	0.00	
17630.00†	90.000	179.794	6950.00	9423.77	-9378.30	-924.82	40.4796654	-104.5892818	0.00	
17730.00†	90.000	179.794	6950.00	9523.27	-9478.30	-924.46	40.4793909	-104.5892842	0.00	
17785.66	90.000	179.794	6950.00 ²	9578.65	-9533.96	-924.26	40.4792381	-104.5892856	0.00	End of Tangent (XS)

HOLE & CASING SECTIONS - Ref Wellbore: BISHOP A18-733 PWB Ref Wellpath: BISHOP A18-733 (REV-A.0) PWP									
String/Diameter	Start MD [ft]	End MD [ft]	Interval [ft]	Start TVD [ft]	End TVD [ft]	Start N/S [ft]	Start E/W [ft]	End N/S [ft]	End E/W [ft]
9.625in Casing Surface	30.00	1950.00	1920.00	30.00	1950.00	0.00	0.00	0.00	0.00

TARGETS									
Name	MD [ft]	TVD [ft]	North [ft]	East [ft]	Grid East [US ft]	Grid North [US ft]	Latitude	Longitude	Shape
OGDP 1 SEC.07-T06N-R64W	N/A	-2.00	1.18	114.01	3254380.72	1428262.61	40.5053800	-104.5852000	polygon
	2D Polygon: dimensions not calculated								
OGDP 1 SEC.18-T06N-R64W	N/A	-2.00	1.18	114.01	3254380.72	1428262.61	40.5053800	-104.5852000	polygon
	2D Polygon: dimensions not calculated								
2) BISHOP A18-733 BHL Rev-1 (200'FSL & 1544'FEL,SEC.18)	17785.66	6950.00	-9533.96	-924.26	3253342.48	1418727.81	40.4792381	-104.5892856	point
1) BISHOP A18-733 LP Rev-1 (200'FNL & 1492'FEL,SEC.07)	7612.92	6950.00	638.72	-960.75	3253305.99	1428900.13	40.5071602	-104.5890411	point

SURVEY PROGRAM - Ref Wellbore: BISHOP A18-733 PWB Ref Wellpath: BISHOP A18-733 (REV-A.0) PWP				
Start MD [ft]	End MD [ft]	Positional Uncertainty Model	Log Name/Comment	Wellbore
30.00	17785.66	OWSG MWD rev2 (MS+IFR1)		BISHOP A18-733 PWB



Planned Wellpath Report
BISHOP A18-733 (REV-A.0) PWP
Page 7 of 7



REFERENCE WELLPATH IDENTIFICATION			
Operator	NOBLE ENERGY, INC	Well	BISHOP A18-733
Field	WELD COUNTY (NOBLE NAD 83 GRID)	API/Legal	
Facility	SEC.07-T06N-R64W	Wellbore	BISHOP A18-733 PWB
Slot	SLOT#14 BISHOP A18-733 (858'FNL & 537'FEL,SEC.07)		

DESIGN COMMENTS				
MD [ft]	Inclination [°]	Azimuth [°]	TVD [ft]	Comment
30.00	0.000	327.769	30.00	Tie On
2000.00	0.000	327.769	2000.00	End of Tangent
3120.62	22.412	327.769	3092.26	End of Build (XS)
6403.37	22.412	327.769	6127.05	End of Tangent (XS)
7612.92	90.000	179.794	6950.00	End of 3D Arc (XS)
17785.66	90.000	179.794	6950.00	End of Tangent (XS)