

NOBLE ENERGY, INC



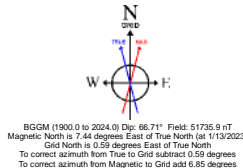
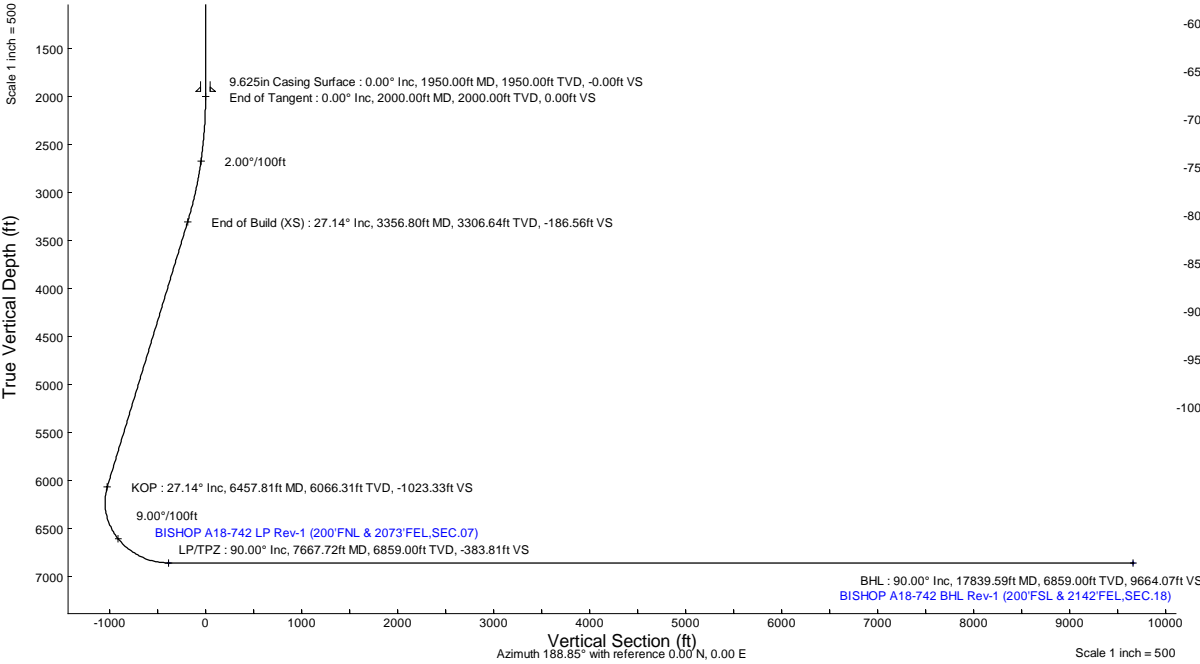
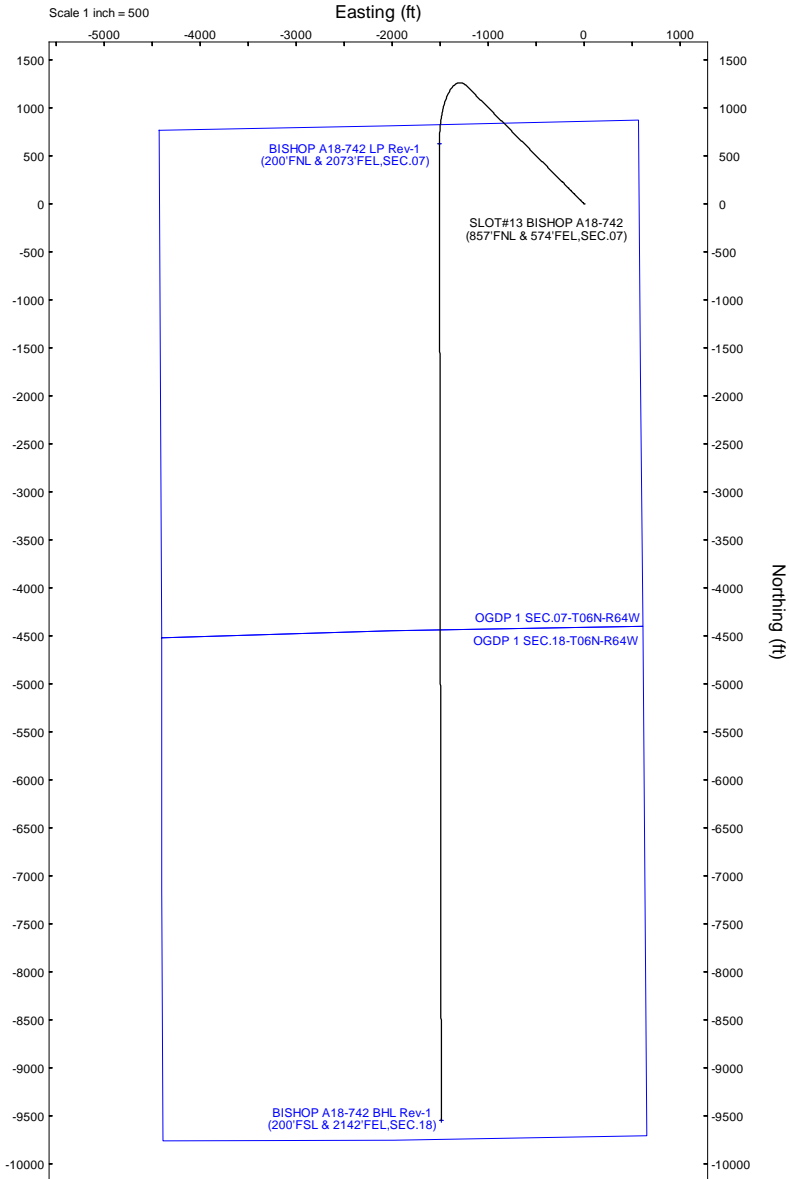
Location:	COLORADO	Slot:	SLOT#13 BISHOP A18-742 (857'FNL & 574'FEL,SEC.07)
Field:	WELD COUNTY (NOBLE NAD 83 GRID)	Well:	BISHOP A18-742
Facility:	SEC.07-T06N-R64W	Wellbore:	BISHOP A18-742 PWB
Plot reference wellpath is BISHOP A18-742 (REV-A.0) PWP			
True vertical depths are referenced to (4739'GL+30'KB@4769'RKB) (RKB)		Grid System: NAD83 / Lambert Colorado SP, Northern Zone (501), US feet	
Reference wellpath measured depths are referenced to (4739'GL+30'KB@4769'RKB) (RKB)		North Reference: Grid north	
(4739'GL+30'KB@4769'RKB) (RKB) to Mean Sea Level: 4769 feet		Scale: True distance	
Mean Sea Level to Ground level (At Slot: SLOT#13 BISHOP A18-742 (857'FNL & 574'FEL,SEC.07)): 0 feet		Coordinates are in feet referenced to Slot	
Offset wellpath MDs are referenced to each path's default MD datum		Depths are in feet	
		Created by: guenaler on 2023-01-13; Database: WA_Denver	

Location Information							
Facility Name				Grid East (US ft)	Grid North (US ft)	Latitude	Longitude
SEC.07-T06N-R64W				3254380.716	1428262.611	40°30'19.3680"N	104°35'8.7200"W
Slot				Local N (ft)	Local E (ft)	Latitude	Longitude
SLOT#13 BISHOP A18-742 (857'FNL & 574'FEL,SEC.07)				2.09	-150.20	40°30'19.4040"N	104°35'8.6640"W
(4739'GL+30'KB@4769'RKB) to Ground level (At Slot: SLOT#13 BISHOP A18-742 (857'FNL & 574'FEL,SEC.07))				4769#			
Mean Sea Level to Ground level (At Slot: SLOT#13 BISHOP A18-742 (857'FNL & 574'FEL,SEC.07))				0#			
(4739'GL+30'KB@4769'RKB) to Mean Sea Level				4769#			

Well Profile Data							
Design Comment	MD (ft)	Inc (°)	Az (°)	TVD (ft)	Local N (ft)	Local E (ft)	DLS (°/100ft)
SHL	30.00	0.000	315.117	30.00	0.00	0.00	0.00
End of Tangent	2000.00	0.000	315.117	2000.00	0.00	0.00	0.00
End of Build (XS)	3356.80	27.136	315.117	3306.64	223.43	-222.52	2.00
KOP	6457.81	27.136	315.117	6066.31	1225.60	-1220.59	0.00
LP/TPZ	7667.72	90.000	179.890	6859.00	622.72	-1505.56	9.00
BHL	17839.59	90.000	179.890	6859.00	-9549.13	-1486.02	0.00

Targets							
Name	MD (ft)	TVD (ft)	Local N (ft)	Local E (ft)	Grid East (US ft)	Grid North (US ft)	Latitude
OGDP 1 SEC.07-T06N-R64W	N/A	-3.00	-2.09	150.20	3254380.72	1428262.61	40°30'19.3680"N
OGDP 1 SEC.18-T06N-R64W	N/A	-3.00	-2.09	150.20	3254380.72	1428262.61	40°30'19.3680"N
BISHOP A18-742 BHL Rev-1 (200'FSL & 2142'FEL,SEC.18)	17839.59	6859.00	-9549.13	-1486.02	3252744.56	1418715.91	40°28'45.2003"N
BISHOP A18-742 LP Rev-1 (200'FNL & 2073'FEL,SEC.07)	7667.72	6859.00	622.72	-1505.56	3252725.01	1428887.41	40°30'25.7100"N

Survey Program					
Start MD (ft)	End MD (ft)	Tool	Model	Log Name/Comment	Wellbore
30.00	17839.59	OWSG MWD rev2	OWSG MWD rev2 (MS+IFR1)		BISHOP A18-742 PWB





Planned Wellpath Report
BISHOP A18-742 (REV-A.0) PWP
Page 1 of 7



REFERENCE WELLPATH IDENTIFICATION			
Operator	NOBLE ENERGY, INC	Well	BISHOP A18-742
Field	WELD COUNTY (NOBLE NAD 83 GRID)	API/Legal	
Facility	SEC.07-T06N-R64W	Wellbore	BISHOP A18-742 PWB
Slot	SLOT#13 BISHOP A18-742 (857'FNL & 574'FEL,SEC.07)		

REPORT SETUP INFORMATION			
Projection System	NAD83 / Lambert Colorado SP, Northern Zone (501), US feet	Software System	WellArchitect® 6.0
North Reference	Grid	User	Guenaler
Scale	0.999967	Report Generated	1/13/2023 at 3:45:16 PM
Convergence at slot	0.59° East	Database	WA_Denver

WELLPATH LOCATION						
	Local coordinates		Grid coordinates		Geographic coordinates	
	North[ft]	East[ft]	Easting[US ft]	Northing[US ft]	Latitude	Longitude
Slot Location	2.09	-150.20	3254230.53	1428264.71	40.5053900°	-104.5857400°
Facility Reference Pt			3254380.72	1428262.61	40.5053800°	-104.5852000°
Field Reference Pt			3000000.00	4454105.15	48.7761986°	-105.5000000°

WELLPATH DATUM			
Calculation method	Minimum curvature	(4739'GL+30'KB@4769'RKB) (RKB) to Facility Vertical Datum	4769.00ft
Horizontal Reference Pt	Slot	(4739'GL+30'KB@4769'RKB) (RKB) to Mean Sea Level	4769.00ft
Vertical Reference Pt	(4739'GL+30'KB@4769'RKB) (RKB)	(4739'GL+30'KB@4769'RKB) (RKB) to Ground Level at Slot (SLOT#13 BISHOP A18-742 (857'FNL & 574'FEL,SEC.07))	4769.00ft
MD Reference Pt	(4739'GL+30'KB@4769'RKB) (RKB)	Section Origin	N 0.00, E 0.00 ft
Field Vertical Reference	Mean Sea Level	Section Azimuth	188.85°



Planned Wellpath Report
BISHOP A18-742 (REV-A.0) PWP
Page 2 of 7



REFERENCE WELLPATH IDENTIFICATION			
Operator	NOBLE ENERGY, INC	Well	BISHOP A18-742
Field	WELD COUNTY (NOBLE NAD 83 GRID)	API/Legal	
Facility	SEC.07-T06N-R64W	Wellbore	BISHOP A18-742 PWB
Slot	SLOT#13 BISHOP A18-742 (857'FNL & 574'FEL,SEC.07)		

WELLPATH DATA (185 stations) † = interpolated, ‡ = extrapolated station										
MD [ft]	Inclination [°]	Azimuth [°]	TVD [ft]	Vert Sect [ft]	North [ft]	East [ft]	Latitude	Longitude	DLS [°/100ft]	Comments
0.00†	0.000	315.117	0.00	0.00	0.00	0.00	40.5053900	-104.5857400	0.00	
30.00	0.000	315.117	30.00	0.00	0.00	0.00	40.5053900	-104.5857400	0.00	SHL
130.00†	0.000	315.117	130.00	0.00	0.00	0.00	40.5053900	-104.5857400	0.00	
230.00†	0.000	315.117	230.00	0.00	0.00	0.00	40.5053900	-104.5857400	0.00	
330.00†	0.000	315.117	330.00	0.00	0.00	0.00	40.5053900	-104.5857400	0.00	
430.00†	0.000	315.117	430.00	0.00	0.00	0.00	40.5053900	-104.5857400	0.00	
530.00†	0.000	315.117	530.00	0.00	0.00	0.00	40.5053900	-104.5857400	0.00	
630.00†	0.000	315.117	630.00	0.00	0.00	0.00	40.5053900	-104.5857400	0.00	
730.00†	0.000	315.117	730.00	0.00	0.00	0.00	40.5053900	-104.5857400	0.00	
830.00†	0.000	315.117	830.00	0.00	0.00	0.00	40.5053900	-104.5857400	0.00	
930.00†	0.000	315.117	930.00	0.00	0.00	0.00	40.5053900	-104.5857400	0.00	
1030.00†	0.000	315.117	1030.00	0.00	0.00	0.00	40.5053900	-104.5857400	0.00	
1130.00†	0.000	315.117	1130.00	0.00	0.00	0.00	40.5053900	-104.5857400	0.00	
1230.00†	0.000	315.117	1230.00	0.00	0.00	0.00	40.5053900	-104.5857400	0.00	
1330.00†	0.000	315.117	1330.00	0.00	0.00	0.00	40.5053900	-104.5857400	0.00	
1430.00†	0.000	315.117	1430.00	0.00	0.00	0.00	40.5053900	-104.5857400	0.00	
1530.00†	0.000	315.117	1530.00	0.00	0.00	0.00	40.5053900	-104.5857400	0.00	
1630.00†	0.000	315.117	1630.00	0.00	0.00	0.00	40.5053900	-104.5857400	0.00	
1730.00†	0.000	315.117	1730.00	0.00	0.00	0.00	40.5053900	-104.5857400	0.00	
1830.00†	0.000	315.117	1830.00	0.00	0.00	0.00	40.5053900	-104.5857400	0.00	
1930.00†	0.000	315.117	1930.00	0.00	0.00	0.00	40.5053900	-104.5857400	0.00	
2000.00	0.000	315.117	2000.00	0.00	0.00	0.00	40.5053900	-104.5857400	0.00	End of Tangent
2030.00†	0.600	315.117	2030.00	-0.09	0.11	-0.11	40.5053903	-104.5857404	2.00	
2130.00†	2.600	315.117	2129.96	-1.74	2.09	-2.08	40.5053958	-104.5857474	2.00	
2230.00†	4.600	315.117	2229.75	-5.46	6.54	-6.51	40.5054081	-104.5857632	2.00	
2330.00†	6.600	315.117	2329.27	-11.23	13.45	-13.40	40.5054273	-104.5857877	2.00	
2430.00†	8.600	315.117	2428.39	-19.06	22.82	-22.73	40.5054533	-104.5858209	2.00	
2530.00†	10.600	315.117	2526.98	-28.92	34.64	-34.50	40.5054860	-104.5858628	2.00	
2630.00†	12.600	315.117	2624.93	-40.82	48.89	-48.69	40.5055256	-104.5859133	2.00	
2730.00†	14.600	315.117	2722.13	-54.73	65.55	-65.28	40.5055718	-104.5859723	2.00	
2830.00†	16.600	315.117	2818.44	-70.64	84.60	-84.25	40.5056246	-104.5860398	2.00	
2930.00†	18.600	315.117	2913.75	-88.53	106.02	-105.59	40.5056840	-104.5861157	2.00	
3030.00†	20.600	315.117	3007.95	-108.37	129.79	-129.26	40.5057499	-104.5862000	2.00	
3130.00†	22.600	315.117	3100.93	-130.15	155.87	-155.24	40.5058222	-104.5862924	2.00	
3230.00†	24.600	315.117	3192.56	-153.83	184.24	-183.48	40.5059009	-104.5863929	2.00	
3330.00†	26.600	315.117	3282.74	-179.39	214.85	-213.97	40.5059858	-104.5865014	2.00	
3356.80	27.136	315.117	3306.64	-186.56	223.43	-222.52	40.5060096	-104.5865319	2.00	End of Build (XS)
3430.00†	27.136	315.117	3371.78	-206.31	247.09	-246.08	40.5060751	-104.5866157	0.00	
3530.00†	27.136	315.117	3460.78	-233.30	279.41	-278.27	40.5061648	-104.5867302	0.00	
3630.00†	27.136	315.117	3549.77	-260.28	311.72	-310.45	40.5062544	-104.5868448	0.00	
3730.00†	27.136	315.117	3638.76	-287.26	344.04	-342.64	40.5063440	-104.5869593	0.00	
3830.00†	27.136	315.117	3727.76	-314.25	376.36	-374.82	40.5064336	-104.5870739	0.00	
3930.00†	27.136	315.117	3816.75	-341.23	408.68	-407.01	40.5065232	-104.5871884	0.00	
4030.00†	27.136	315.117	3905.74	-368.22	440.99	-439.19	40.5066128	-104.5873029	0.00	
4130.00†	27.136	315.117	3994.73	-395.20	473.31	-471.38	40.5067024	-104.5874175	0.00	



Planned Wellpath Report
BISHOP A18-742 (REV-A.0) PWP
Page 3 of 7



REFERENCE WELLPATH IDENTIFICATION			
Operator	NOBLE ENERGY, INC	Well	BISHOP A18-742
Field	WELD COUNTY (NOBLE NAD 83 GRID)	API/Legal	
Facility	SEC.07-T06N-R64W	Wellbore	BISHOP A18-742 PWB
Slot	SLOT#13 BISHOP A18-742 (857'FNL & 574'FEL,SEC.07)		

WELLPATH DATA (185 stations) † = interpolated, ‡ = extrapolated station										
MD [ft]	Inclination [°]	Azimuth [°]	TVD [ft]	Vert Sect [ft]	North [ft]	East [ft]	Latitude	Longitude	DLS [°/100ft]	Comments
4230.00†	27.136	315.117	4083.73	-422.18	505.63	-503.56	40.5067920	-104.5875320	0.00	
4330.00†	27.136	315.117	4172.72	-449.17	537.95	-535.75	40.5068816	-104.5876465	0.00	
4430.00†	27.136	315.117	4261.71	-476.15	570.26	-567.93	40.5069713	-104.5877611	0.00	
4530.00†	27.136	315.117	4350.70	-503.14	602.58	-600.12	40.5070609	-104.5878756	0.00	
4630.00†	27.136	315.117	4439.70	-530.12	634.90	-632.30	40.5071505	-104.5879902	0.00	
4730.00†	27.136	315.117	4528.69	-557.10	667.22	-664.49	40.5072401	-104.5881047	0.00	
4830.00†	27.136	315.117	4617.68	-584.09	699.53	-696.67	40.5073297	-104.5882192	0.00	
4930.00†	27.136	315.117	4706.67	-611.07	731.85	-728.86	40.5074193	-104.5883338	0.00	
5030.00†	27.136	315.117	4795.67	-638.06	764.17	-761.05	40.5075089	-104.5884483	0.00	
5130.00†	27.136	315.117	4884.66	-665.04	796.48	-793.23	40.5075985	-104.5885629	0.00	
5230.00†	27.136	315.117	4973.65	-692.02	828.80	-825.42	40.5076881	-104.5886774	0.00	
5330.00†	27.136	315.117	5062.65	-719.01	861.12	-857.60	40.5077777	-104.5887919	0.00	
5430.00†	27.136	315.117	5151.64	-745.99	893.44	-889.79	40.5078674	-104.5889065	0.00	
5530.00†	27.136	315.117	5240.63	-772.97	925.75	-921.97	40.5079570	-104.5890210	0.00	
5630.00†	27.136	315.117	5329.62	-799.96	958.07	-954.16	40.5080466	-104.5891356	0.00	
5730.00†	27.136	315.117	5418.62	-826.94	990.39	-986.34	40.5081362	-104.5892501	0.00	
5830.00†	27.136	315.117	5507.61	-853.93	1022.71	-1018.53	40.5082258	-104.5893647	0.00	
5930.00†	27.136	315.117	5596.60	-880.91	1055.02	-1050.71	40.5083154	-104.5894792	0.00	
6030.00†	27.136	315.117	5685.59	-907.89	1087.34	-1082.90	40.5084050	-104.5895937	0.00	
6130.00†	27.136	315.117	5774.59	-934.88	1119.66	-1115.08	40.5084946	-104.5897083	0.00	
6230.00†	27.136	315.117	5863.58	-961.86	1151.98	-1147.27	40.5085842	-104.5898228	0.00	
6330.00†	27.136	315.117	5952.57	-988.85	1184.29	-1179.45	40.5086738	-104.5899374	0.00	
6430.00†	27.136	315.117	6041.56	-1015.83	1216.61	-1211.64	40.5087634	-104.5900519	0.00	
6457.81	27.136	315.117	6066.31	-1023.33	1225.60	-1220.59	40.5087884	-104.5900838	0.00	KOP
6530.00†	23.267	302.805	6131.67	-1038.88	1245.01	-1244.22	40.5088423	-104.5901680	9.00	
6630.00†	20.124	279.800	6224.74	-1047.21	1258.66	-1277.84	40.5088807	-104.5902884	9.00	
6730.00†	20.593	253.768	6318.68	-1040.02	1256.67	-1311.75	40.5088762	-104.5904104	9.00	
6830.00†	24.466	232.384	6411.19	-1017.51	1239.08	-1345.10	40.5088289	-104.5905310	9.00	
6930.00†	30.470	217.735	6499.98	-980.22	1206.32	-1377.09	40.5087399	-104.5906473	9.00	
7030.00†	37.593	207.849	6582.86	-929.08	1159.20	-1406.92	40.5086114	-104.5907563	9.00	
7130.00†	45.306	200.814	6657.80	-865.34	1098.89	-1433.85	40.5084466	-104.5908553	9.00	
7230.00†	53.347	195.470	6722.95	-790.57	1026.85	-1457.23	40.5082495	-104.5909421	9.00	
7330.00†	61.582	191.153	6776.70	-706.61	944.88	-1476.48	40.5080251	-104.5910143	9.00	
7430.00†	69.933	187.467	6817.74	-615.53	854.99	-1491.12	40.5077788	-104.5910702	9.00	
7530.00†	78.352	184.157	6845.04	-519.58	759.38	-1500.79	40.5075166	-104.5911086	9.00	
7630.00†	86.807	181.044	6857.95	-421.11	660.42	-1505.26	40.5072451	-104.5911283	9.00	
7667.72	90.000	179.890	6859.00 [†]	-383.81	622.72	-1505.56	40.5071417	-104.5911308	9.00	LP/TPZ
7730.00†	90.000	179.890	6859.00	-322.29	560.44	-1505.44	40.5069707	-104.5911326	0.00	
7830.00†	90.000	179.890	6859.00	-223.51	460.44	-1505.25	40.5066963	-104.5911356	0.00	
7930.00†	90.000	179.890	6859.00	-124.73	360.44	-1505.06	40.5064218	-104.5911386	0.00	
8030.00†	90.000	179.890	6859.00	-25.95	260.44	-1504.87	40.5061473	-104.5911416	0.00	
8130.00†	90.000	179.890	6859.00	72.83	160.44	-1504.68	40.5058728	-104.5911446	0.00	
8230.00†	90.000	179.890	6859.00	171.61	60.44	-1504.48	40.5055984	-104.5911476	0.00	
8330.00†	90.000	179.890	6859.00	270.40	-39.55	-1504.29	40.5053239	-104.5911506	0.00	
8430.00†	90.000	179.890	6859.00	369.18	-139.55	-1504.10	40.5050494	-104.5911536	0.00	



Planned Wellpath Report
BISHOP A18-742 (REV-A.0) PWP
Page 4 of 7



REFERENCE WELLPATH IDENTIFICATION			
Operator	NOBLE ENERGY, INC	Well	BISHOP A18-742
Field	WELD COUNTY (NOBLE NAD 83 GRID)	API/Legal	
Facility	SEC.07-T06N-R64W	Wellbore	BISHOP A18-742 PWB
Slot	SLOT#13 BISHOP A18-742 (857'FNL & 574'FEL,SEC.07)		

WELLPATH DATA (185 stations) † = interpolated, ‡ = extrapolated station										
MD [ft]	Inclination [°]	Azimuth [°]	TVD [ft]	Vert Sect [ft]	North [ft]	East [ft]	Latitude	Longitude	DLS [°/100ft]	Comments
8530.00†	90.000	179.890	6859.00	467.96	-239.55	-1503.91	40.5047749	-104.5911566	0.00	
8630.00†	90.000	179.890	6859.00	566.74	-339.55	-1503.71	40.5045005	-104.5911596	0.00	
8730.00†	90.000	179.890	6859.00	665.52	-439.55	-1503.52	40.5042260	-104.5911626	0.00	
8830.00†	90.000	179.890	6859.00	764.30	-539.55	-1503.33	40.5039515	-104.5911656	0.00	
8930.00†	90.000	179.890	6859.00	863.08	-639.55	-1503.14	40.5036770	-104.5911686	0.00	
9030.00†	90.000	179.890	6859.00	961.86	-739.55	-1502.95	40.5034026	-104.5911716	0.00	
9130.00†	90.000	179.890	6859.00	1060.64	-839.55	-1502.75	40.5031281	-104.5911746	0.00	
9230.00†	90.000	179.890	6859.00	1159.42	-939.55	-1502.56	40.5028536	-104.5911775	0.00	
9330.00†	90.000	179.890	6859.00	1258.21	-1039.55	-1502.37	40.5025791	-104.5911805	0.00	
9430.00†	90.000	179.890	6859.00	1356.99	-1139.55	-1502.18	40.5023046	-104.5911835	0.00	
9530.00†	90.000	179.890	6859.00	1455.77	-1239.55	-1501.99	40.5020302	-104.5911865	0.00	
9630.00†	90.000	179.890	6859.00	1554.55	-1339.55	-1501.79	40.5017557	-104.5911895	0.00	
9730.00†	90.000	179.890	6859.00	1653.33	-1439.55	-1501.60	40.5014812	-104.5911925	0.00	
9830.00†	90.000	179.890	6859.00	1752.11	-1539.55	-1501.41	40.5012067	-104.5911955	0.00	
9930.00†	90.000	179.890	6859.00	1850.89	-1639.55	-1501.22	40.5009323	-104.5911985	0.00	
10030.00†	90.000	179.890	6859.00	1949.67	-1739.55	-1501.02	40.5006578	-104.5912015	0.00	
10130.00†	90.000	179.890	6859.00	2048.45	-1839.55	-1500.83	40.5003833	-104.5912045	0.00	
10230.00†	90.000	179.890	6859.00	2147.23	-1939.55	-1500.64	40.5001088	-104.5912075	0.00	
10330.00†	90.000	179.890	6859.00	2246.01	-2039.55	-1500.45	40.4998344	-104.5912105	0.00	
10430.00†	90.000	179.890	6859.00	2344.80	-2139.55	-1500.26	40.4995599	-104.5912135	0.00	
10530.00†	90.000	179.890	6859.00	2443.58	-2239.55	-1500.06	40.4992854	-104.5912165	0.00	
10630.00†	90.000	179.890	6859.00	2542.36	-2339.55	-1499.87	40.4990109	-104.5912195	0.00	
10730.00†	90.000	179.890	6859.00	2641.14	-2439.55	-1499.68	40.4987365	-104.5912225	0.00	
10830.00†	90.000	179.890	6859.00	2739.92	-2539.55	-1499.49	40.4984620	-104.5912255	0.00	
10930.00†	90.000	179.890	6859.00	2838.70	-2639.55	-1499.30	40.4981875	-104.5912284	0.00	
11030.00†	90.000	179.890	6859.00	2937.48	-2739.55	-1499.10	40.4979130	-104.5912314	0.00	
11130.00†	90.000	179.890	6859.00	3036.26	-2839.55	-1498.91	40.4976386	-104.5912344	0.00	
11230.00†	90.000	179.890	6859.00	3135.04	-2939.55	-1498.72	40.4973641	-104.5912374	0.00	
11330.00†	90.000	179.890	6859.00	3233.82	-3039.55	-1498.53	40.4970896	-104.5912404	0.00	
11430.00†	90.000	179.890	6859.00	3332.61	-3139.55	-1498.33	40.4968151	-104.5912434	0.00	
11530.00†	90.000	179.890	6859.00	3431.39	-3239.55	-1498.14	40.4965407	-104.5912464	0.00	
11630.00†	90.000	179.890	6859.00	3530.17	-3339.55	-1497.95	40.4962662	-104.5912494	0.00	
11730.00†	90.000	179.890	6859.00	3628.95	-3439.55	-1497.76	40.4959917	-104.5912524	0.00	
11830.00†	90.000	179.890	6859.00	3727.73	-3539.55	-1497.57	40.4957172	-104.5912554	0.00	
11930.00†	90.000	179.890	6859.00	3826.51	-3639.55	-1497.37	40.4954428	-104.5912584	0.00	
12030.00†	90.000	179.890	6859.00	3925.29	-3739.55	-1497.18	40.4951683	-104.5912614	0.00	
12130.00†	90.000	179.890	6859.00	4024.07	-3839.55	-1496.99	40.4948938	-104.5912644	0.00	
12230.00†	90.000	179.890	6859.00	4122.85	-3939.55	-1496.80	40.4946193	-104.5912674	0.00	
12330.00†	90.000	179.890	6859.00	4221.63	-4039.55	-1496.61	40.4943448	-104.5912704	0.00	
12430.00†	90.000	179.890	6859.00	4320.42	-4139.55	-1496.41	40.4940704	-104.5912734	0.00	
12530.00†	90.000	179.890	6859.00	4419.20	-4239.55	-1496.22	40.4937959	-104.5912763	0.00	
12630.00†	90.000	179.890	6859.00	4517.98	-4339.55	-1496.03	40.4935214	-104.5912793	0.00	
12730.00†	90.000	179.890	6859.00	4616.76	-4439.55	-1495.84	40.4932469	-104.5912823	0.00	
12830.00†	90.000	179.890	6859.00	4715.54	-4539.55	-1495.64	40.4929725	-104.5912853	0.00	
12930.00†	90.000	179.890	6859.00	4814.32	-4639.55	-1495.45	40.4926980	-104.5912883	0.00	



Planned Wellpath Report
BISHOP A18-742 (REV-A.0) PWP
Page 5 of 7



REFERENCE WELLPATH IDENTIFICATION			
Operator	NOBLE ENERGY, INC	Well	BISHOP A18-742
Field	WELD COUNTY (NOBLE NAD 83 GRID)	API/Legal	
Facility	SEC.07-T06N-R64W	Wellbore	BISHOP A18-742 PWB
Slot	SLOT#13 BISHOP A18-742 (857'FNL & 574'FEL,SEC.07)		

WELLPATH DATA (185 stations) † = interpolated, ‡ = extrapolated station										
MD [ft]	Inclination [°]	Azimuth [°]	TVD [ft]	Vert Sect [ft]	North [ft]	East [ft]	Latitude	Longitude	DLS [°/100ft]	Comments
13030.00†	90.000	179.890	6859.00	4913.10	-4739.55	-1495.26	40.4924235	-104.5912913	0.00	
13130.00†	90.000	179.890	6859.00	5011.88	-4839.55	-1495.07	40.4921490	-104.5912943	0.00	
13230.00†	90.000	179.890	6859.00	5110.66	-4939.55	-1494.88	40.4918746	-104.5912973	0.00	
13330.00†	90.000	179.890	6859.00	5209.44	-5039.55	-1494.68	40.4916001	-104.5913003	0.00	
13430.00†	90.000	179.890	6859.00	5308.23	-5139.55	-1494.49	40.4913256	-104.5913033	0.00	
13530.00†	90.000	179.890	6859.00	5407.01	-5239.55	-1494.30	40.4910511	-104.5913063	0.00	
13630.00†	90.000	179.890	6859.00	5505.79	-5339.55	-1494.11	40.4907767	-104.5913093	0.00	
13730.00†	90.000	179.890	6859.00	5604.57	-5439.54	-1493.92	40.4905022	-104.5913123	0.00	
13830.00†	90.000	179.890	6859.00	5703.35	-5539.54	-1493.72	40.4902277	-104.5913153	0.00	
13930.00†	90.000	179.890	6859.00	5802.13	-5639.54	-1493.53	40.4899532	-104.5913183	0.00	
14030.00†	90.000	179.890	6859.00	5900.91	-5739.54	-1493.34	40.4896788	-104.5913212	0.00	
14130.00†	90.000	179.890	6859.00	5999.69	-5839.54	-1493.15	40.4894043	-104.5913242	0.00	
14230.00†	90.000	179.890	6859.00	6098.47	-5939.54	-1492.95	40.4891298	-104.5913272	0.00	
14330.00†	90.000	179.890	6859.00	6197.25	-6039.54	-1492.76	40.4888553	-104.5913302	0.00	
14430.00†	90.000	179.890	6859.00	6296.04	-6139.54	-1492.57	40.4885808	-104.5913332	0.00	
14530.00†	90.000	179.890	6859.00	6394.82	-6239.54	-1492.38	40.4883064	-104.5913362	0.00	
14630.00†	90.000	179.890	6859.00	6493.60	-6339.54	-1492.19	40.4880319	-104.5913392	0.00	
14730.00†	90.000	179.890	6859.00	6592.38	-6439.54	-1491.99	40.4877574	-104.5913422	0.00	
14830.00†	90.000	179.890	6859.00	6691.16	-6539.54	-1491.80	40.4874829	-104.5913452	0.00	
14930.00†	90.000	179.890	6859.00	6789.94	-6639.54	-1491.61	40.4872085	-104.5913482	0.00	
15030.00†	90.000	179.890	6859.00	6888.72	-6739.54	-1491.42	40.4869340	-104.5913512	0.00	
15130.00†	90.000	179.890	6859.00	6987.50	-6839.54	-1491.22	40.4866595	-104.5913542	0.00	
15230.00†	90.000	179.890	6859.00	7086.28	-6939.54	-1491.03	40.4863850	-104.5913572	0.00	
15330.00†	90.000	179.890	6859.00	7185.06	-7039.54	-1490.84	40.4861106	-104.5913602	0.00	
15430.00†	90.000	179.890	6859.00	7283.84	-7139.54	-1490.65	40.4858361	-104.5913632	0.00	
15530.00†	90.000	179.890	6859.00	7382.63	-7239.54	-1490.46	40.4855616	-104.5913661	0.00	
15630.00†	90.000	179.890	6859.00	7481.41	-7339.54	-1490.26	40.4852871	-104.5913691	0.00	
15730.00†	90.000	179.890	6859.00	7580.19	-7439.54	-1490.07	40.4850126	-104.5913721	0.00	
15830.00†	90.000	179.890	6859.00	7678.97	-7539.54	-1489.88	40.4847382	-104.5913751	0.00	
15930.00†	90.000	179.890	6859.00	7777.75	-7639.54	-1489.69	40.4844637	-104.5913781	0.00	
16030.00†	90.000	179.890	6859.00	7876.53	-7739.54	-1489.50	40.4841892	-104.5913811	0.00	
16130.00†	90.000	179.890	6859.00	7975.31	-7839.54	-1489.30	40.4839147	-104.5913841	0.00	
16230.00†	90.000	179.890	6859.00	8074.09	-7939.54	-1489.11	40.4836403	-104.5913871	0.00	
16330.00†	90.000	179.890	6859.00	8172.87	-8039.54	-1488.92	40.4833658	-104.5913901	0.00	
16430.00†	90.000	179.890	6859.00	8271.65	-8139.54	-1488.73	40.4830913	-104.5913931	0.00	
16530.00†	90.000	179.890	6859.00	8370.44	-8239.54	-1488.53	40.4828168	-104.5913961	0.00	
16630.00†	90.000	179.890	6859.00	8469.22	-8339.54	-1488.34	40.4825424	-104.5913991	0.00	
16730.00†	90.000	179.890	6859.00	8568.00	-8439.54	-1488.15	40.4822679	-104.5914021	0.00	
16830.00†	90.000	179.890	6859.00	8666.78	-8539.54	-1487.96	40.4819934	-104.5914051	0.00	
16930.00†	90.000	179.890	6859.00	8765.56	-8639.54	-1487.77	40.4817189	-104.5914080	0.00	
17030.00†	90.000	179.890	6859.00	8864.34	-8739.54	-1487.57	40.4814444	-104.5914110	0.00	
17130.00†	90.000	179.890	6859.00	8963.12	-8839.54	-1487.38	40.4811700	-104.5914140	0.00	
17230.00†	90.000	179.890	6859.00	9061.90	-8939.54	-1487.19	40.4808955	-104.5914170	0.00	
17330.00†	90.000	179.890	6859.00	9160.68	-9039.54	-1487.00	40.4806210	-104.5914200	0.00	
17430.00†	90.000	179.890	6859.00	9259.46	-9139.54	-1486.81	40.4803465	-104.5914230	0.00	



Planned Wellpath Report

BISHOP A18-742 (REV-A.0) PWP

Page 6 of 7



REFERENCE WELLPATH IDENTIFICATION			
Operator	NOBLE ENERGY, INC	Well	BISHOP A18-742
Field	WELD COUNTY (NOBLE NAD 83 GRID)	API/Legal	
Facility	SEC.07-T06N-R64W	Wellbore	BISHOP A18-742 PWB
Slot	SLOT#13 BISHOP A18-742 (857'FNL & 574'FEL,SEC.07)		

WELLPATH DATA (185 stations) † = interpolated, ‡ = extrapolated station										
MD [ft]	Inclination [°]	Azimuth [°]	TVD [ft]	Vert Sect [ft]	North [ft]	East [ft]	Latitude	Longitude	DLS [°/100ft]	Comments
17530.00†	90.000	179.890	6859.00	9358.25	-9239.54	-1486.61	40.4800721	-104.5914260	0.00	
17630.00†	90.000	179.890	6859.00	9457.03	-9339.54	-1486.42	40.4797976	-104.5914290	0.00	
17730.00†	90.000	179.890	6859.00	9555.81	-9439.54	-1486.23	40.4795231	-104.5914320	0.00	
17830.00†	90.000	179.890	6859.00	9654.59	-9539.54	-1486.04	40.4792486	-104.5914350	0.00	
17839.59	90.000	179.890	6859.00 ²	9664.07	-9549.13	-1486.02	40.4792223	-104.5914353	0.00	BHL

HOLE & CASING SECTIONS - Ref Wellbore: BISHOP A18-742 PWB Ref Wellpath: BISHOP A18-742 (REV-A.0) PWP									
String/Diameter	Start MD [ft]	End MD [ft]	Interval [ft]	Start TVD [ft]	End TVD [ft]	Start N/S [ft]	Start E/W [ft]	End N/S [ft]	End E/W [ft]
9.625in Casing Surface	30.00	1950.00	1920.00	30.00	1950.00	0.00	0.00	0.00	0.00

TARGETS									
Name	MD [ft]	TVD [ft]	North [ft]	East [ft]	Grid East [US ft]	Grid North [US ft]	Latitude	Longitude	Shape
OGDP 1 SEC.07-T06N-R64W	N/A	-3.00	-2.09	150.20	3254380.72	1428262.61	40.5053800	-104.5852000	polygon
	2D Polygon: dimensions not calculated								
OGDP 1 SEC.18-T06N-R64W	N/A	-3.00	-2.09	150.20	3254380.72	1428262.61	40.5053800	-104.5852000	polygon
	2D Polygon: dimensions not calculated								
2) BISHOP A18-742 BHL Rev-1 (200'FSL & 2142'FEL,SEC.18)	17839.59	6859.00	-9549.13	-1486.02	3252744.56	1418715.91	40.4792223	-104.5914353	point
1) BISHOP A18-742 LP Rev-1 (200'FNL & 2073'FEL,SEC.07)	7667.72	6859.00	622.72	-1505.56	3252725.01	1428887.41	40.5071417	-104.5911308	point

SURVEY PROGRAM - Ref Wellbore: BISHOP A18-742 PWB Ref Wellpath: BISHOP A18-742 (REV-A.0) PWP				
Start MD [ft]	End MD [ft]	Positional Uncertainty Model	Log Name/Comment	Wellbore
30.00	17839.59	OWSG MWD rev2 (MS+IFR1)		BISHOP A18-742 PWB



Planned Wellpath Report

BISHOP A18-742 (REV-A.0) PWP

Page 7 of 7



REFERENCE WELLPATH IDENTIFICATION			
Operator	NOBLE ENERGY, INC	Well	BISHOP A18-742
Field	WELD COUNTY (NOBLE NAD 83 GRID)	API/Legal	
Facility	SEC.07-T06N-R64W	Wellbore	BISHOP A18-742 PWB
Slot	SLOT#13 BISHOP A18-742 (857'FNL & 574'FEL,SEC.07)		

DESIGN COMMENTS				
MD [ft]	Inclination [°]	Azimuth [°]	TVD [ft]	Comment
30.00	0.000	315.117	30.00	SHL
2000.00	0.000	315.117	2000.00	End of Tangent
3356.80	27.136	315.117	3306.64	End of Build (XS)
6457.81	27.136	315.117	6066.31	KOP
7667.72	90.000	179.890	6859.00	LP/TPZ
17839.59	90.000	179.890	6859.00	BHL