

NOBLE ENERGY, INC



Location:	COLORADO	Slot:	SLOT#26 BISHOP A05-773 (1011°FNL & 388°FEL,SEC.07)
Field:	WELD COUNTY (NOBLE NAD 83 GRID)	Well:	BISHOP A05-773
Facility:	SEC.07-T06N-R64W	Wellbore:	BISHOP A05-773 PWB

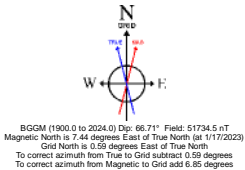
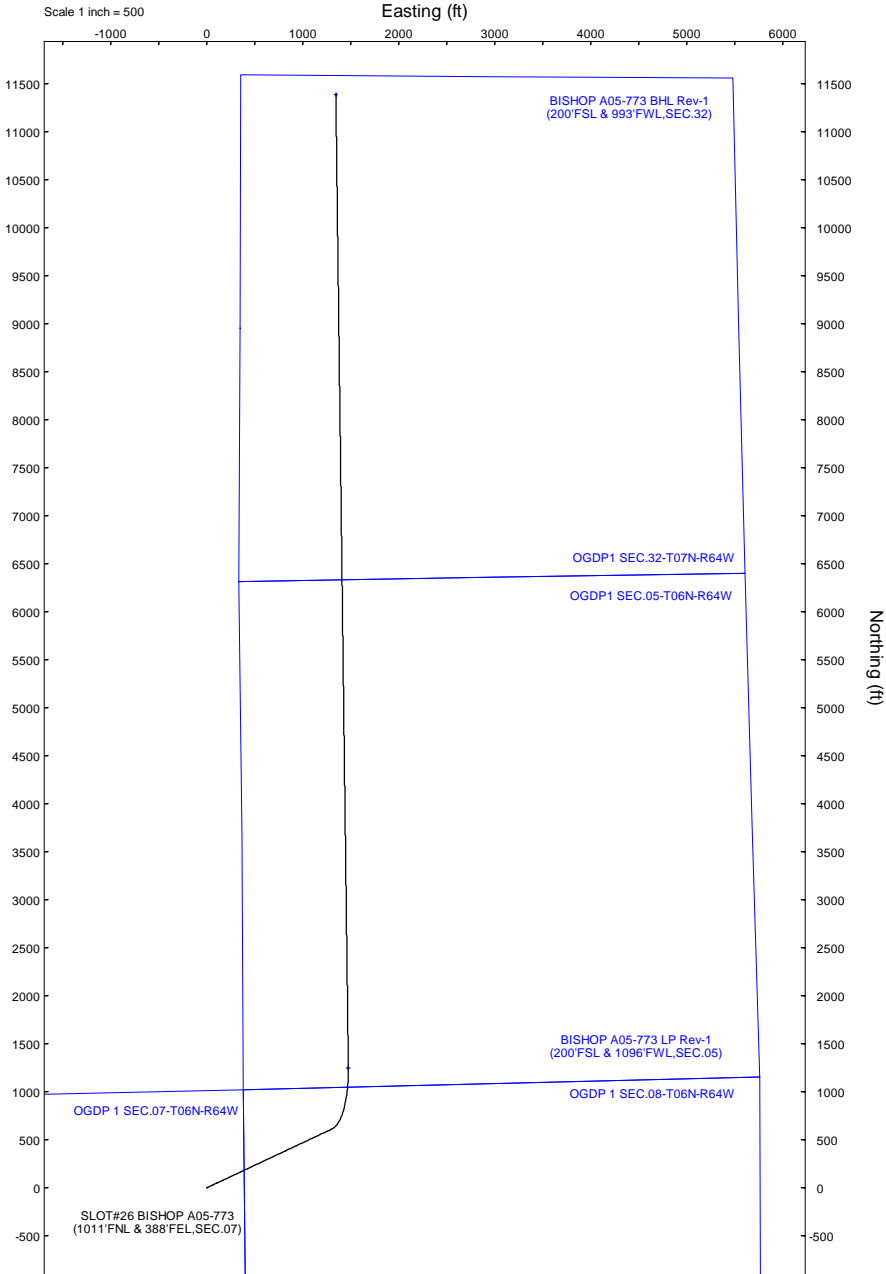
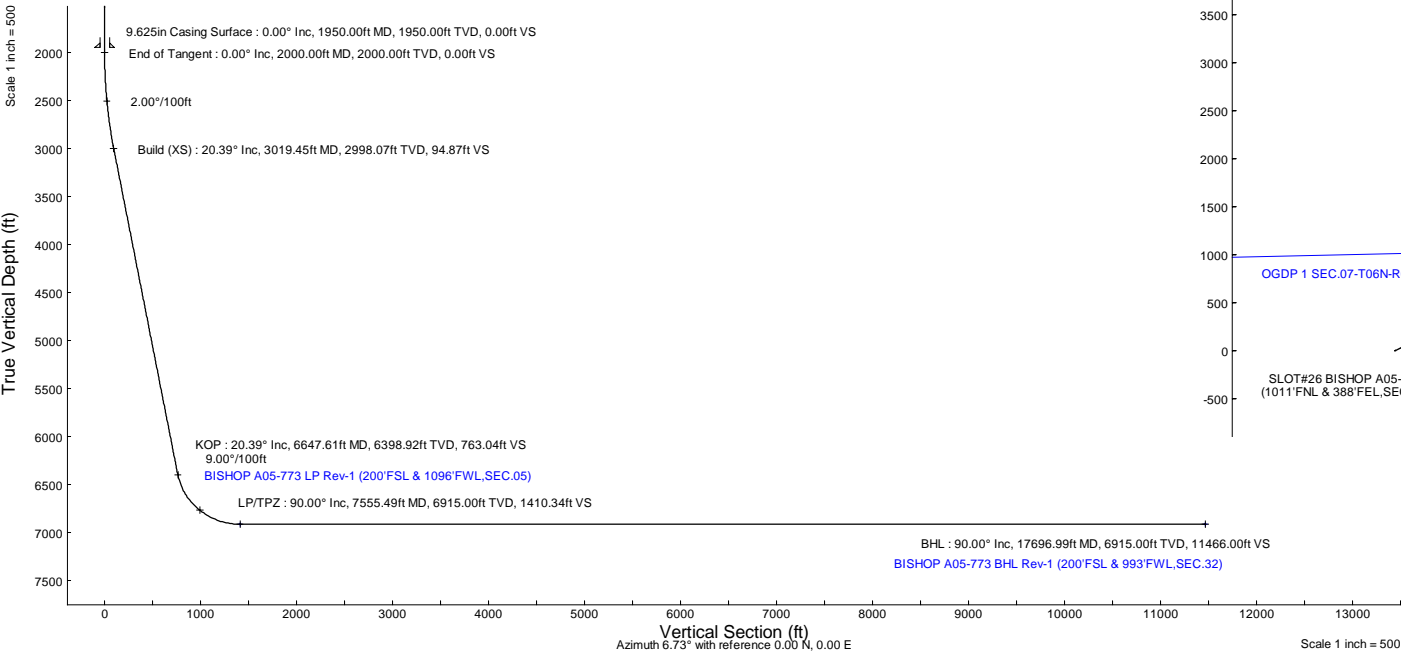
Plot reference wellpath is BISHOP A05-773 (REV-A.0) PWP	Grid System: NAD83 / Lambert Colorado SP, Northern Zone (501), US feet
True vertical depths are referenced to (4745 GL+30KB@4775 RKB) (RKB)	North Reference: Grid north
Reference wellpath measured depths are referenced to (4745 GL+30KB@4775 RKB) (RKB)	Scale: True distance
(4745 GL+30KB@4775 RKB) to Mean Sea Level: 4775 feet	Coordinates are in feet referenced to Slot
Mean Sea Level to Ground level (At Slot: SLOT#26 BISHOP A05-773 (1011°FNL & 388°FEL,SEC.07): 0 feet	Depths are in feet
Offset wellpath MDs are referenced to each path's default MD datum	Created by: guemaler on 2023-01-17; Database: WA_Denver

Location Information					
Facility Name		Grid East (US ft)		Latitude	Longitude
SEC.07-T06N-R64W		3254380.716		40°30'19.3680"N	104°36'8.7200"W
Slot	Local N (ft)	Local E (ft)	Grid East (US ft)	Grid North (US ft)	Latitude
SLOT#26 BISHOP A05-773 (1011°FNL & 388°FEL,SEC.07)	-148.99	37.69	3254418.405	1426113.627	40°30'17.8920"N
(4745 GL+30KB@4775 RKB) to Ground level (At Slot: SLOT#26 BISHOP A05-773 (1011°FNL & 388°FEL,SEC.07))					4775ft
Mean Sea Level to Ground level (At Slot: SLOT#26 BISHOP A05-773 (1011°FNL & 388°FEL,SEC.07))					0ft
(4745 GL+30KB@4775 RKB) to Mean Sea Level					4775ft

Well Profile Data							
Design Comment	MD (ft)	Inc (")	Az (°)	TVD (ft)	Local N (ft)	Local E (ft)	DLS (°/100ft)
SHL	30.00	0.000	64.815	30.00	0.00	0.00	0.00
End of Tangent	2000.00	0.000	64.815	2000.00	0.00	0.00	0.00
Build (XS)	3019.45	20.389	64.815	2998.07	76.38	162.42	2.00
KOP	6647.61	20.389	64.815	6398.92	614.27	1306.29	0.00
LP/TPZ	7555.49	90.000	359.266	6915.00	1246.42	1472.81	9.00
BHL	17696.99	90.000	359.266	6915.00	11387.09	1342.91	0.00

Targets							
Name	MD (ft)	TVD (ft)	Local N (ft)	Local E (ft)	Grid East (US ft)	Grid North (US ft)	Latitude
OGDP 1 SEC.07-T06N-R64W	N/A	3.00	148.99	-37.69	3254380.72	1426262.61	40°30'19.3680"N
OGDP 1 SEC.08-T06N-R64W	N/A	3.00	148.99	-37.69	3254380.72	1426262.61	40°30'19.3680"N
OGDP1 SEC.05-T06N-R64W	N/A	21.00	167.42	-4290.05	3250128.51	1426281.04	40°30'19.9800"N
OGDP1 SEC.32-T07N-R64W	N/A	21.00	167.42	-4290.05	3250128.51	1426281.04	40°30'19.9800"N
BISHOP A05-773 BHL Rev-1 (200°FSL & 993°FWL,SEC.32)	17696.99	6915.00	11387.09	1342.91	3255761.27	1439500.31	40°32'10.2693"N
BISHOP A05-773 LP Rev-1 (200°FSL & 1096°FWL,SEC.05)	7555.49	6915.00	1246.42	1472.81	3255891.17	1429360.00	40°30'30.0572"N

Survey Program					
Start MD (ft)	End MD (ft)	Tool	Model	Log Name/Comment	Wellbore
30.00	17696.99	OWSG MWD rev2	OWSG MWD rev2 (MS+IFR1)		BISHOP A05-773 PWB



BGM (1900.0 to 2024.0) Day: 68.71° Field: 51734.5 nT  
Magnetic North is 7.44 degrees East of True North (at 1/17/2023)  
Grid North is 0.59 degrees East of True North  
To correct azimuth from True to Grid subtract 0.59 degrees  
To correct azimuth from Magnetic to Grid add 6.85 degrees



Planned Wellpath Report  
BISHOP A05-773 (REV-A.0) PWP  
Page 1 of 7



REFERENCE WELLPATH IDENTIFICATION			
Operator	NOBLE ENERGY, INC	Well	BISHOP A05-773
Field	WELD COUNTY (NOBLE NAD 83 GRID)	API/Legal	
Facility	SEC.07-T06N-R64W	Wellbore	BISHOP A05-773 PWB
Slot	SLOT#26 BISHOP A05-773 (1011'FNL & 388'FEL,SEC.07)		

REPORT SETUP INFORMATION			
Projection System	NAD83 / Lambert Colorado SP, Northern Zone (501), US feet	Software System	WellArchitect® 6.0
North Reference	Grid	User	Guenaler
Scale	0.999967	Report Generated	1/17/2023 at 12:51:09 PM
Convergence at slot	0.59° East	Database	WA_Denver

WELLPATH LOCATION						
	Local coordinates		Grid coordinates		Geographic coordinates	
	North[ft]	East[ft]	Easting[US ft]	Northing[US ft]	Latitude	Longitude
Slot Location	-148.99	37.69	3254418.41	1428113.63	40.5049700°	-104.5850700°
Facility Reference Pt			3254380.72	1428262.61	40.5053800°	-104.5852000°
Field Reference Pt			3000000.00	4454105.15	48.7761986°	-105.5000000°

WELLPATH DATUM			
Calculation method	Minimum curvature	(4745'GL+30'KB@4775'RKB) (RKB) to Facility Vertical Datum	4775.00ft
Horizontal Reference Pt	Slot	(4745'GL+30'KB@4775'RKB) (RKB) to Mean Sea Level	4775.00ft
Vertical Reference Pt	(4745'GL+30'KB@4775'RKB) (RKB)	(4745'GL+30'KB@4775'RKB) (RKB) to Ground Level at Slot (SLOT#26 BISHOP A05-773 (1011'FNL & 388'FEL,SEC.07))	4775.00ft
MD Reference Pt	(4745'GL+30'KB@4775'RKB) (RKB)	Section Origin	N 0.00, E 0.00 ft
Field Vertical Reference	Mean Sea Level	Section Azimuth	6.73°



Planned Wellpath Report  
BISHOP A05-773 (REV-A.0) PWP  
Page 2 of 7



REFERENCE WELLPATH IDENTIFICATION			
Operator	NOBLE ENERGY, INC	Well	BISHOP A05-773
Field	WELD COUNTY (NOBLE NAD 83 GRID)	API/Legal	
Facility	SEC.07-T06N-R64W	Wellbore	BISHOP A05-773 PWB
Slot	SLOT#26 BISHOP A05-773 (1011'FNL & 388'FEL,SEC.07)		

WELLPATH DATA (183 stations) † = interpolated, ‡ = extrapolated station										
MD [ft]	Inclination [°]	Azimuth [°]	TVD [ft]	Vert Sect [ft]	North [ft]	East [ft]	Latitude	Longitude	DLS [°/100ft]	Comments
0.00†	0.000	64.815	0.00	0.00	0.00	0.00	40.5049700	-104.5850700	0.00	
30.00	0.000	64.815	30.00	0.00	0.00	0.00	40.5049700	-104.5850700	0.00	SHL
130.00†	0.000	64.815	130.00	0.00	0.00	0.00	40.5049700	-104.5850700	0.00	
230.00†	0.000	64.815	230.00	0.00	0.00	0.00	40.5049700	-104.5850700	0.00	
330.00†	0.000	64.815	330.00	0.00	0.00	0.00	40.5049700	-104.5850700	0.00	
430.00†	0.000	64.815	430.00	0.00	0.00	0.00	40.5049700	-104.5850700	0.00	
530.00†	0.000	64.815	530.00	0.00	0.00	0.00	40.5049700	-104.5850700	0.00	
630.00†	0.000	64.815	630.00	0.00	0.00	0.00	40.5049700	-104.5850700	0.00	
730.00†	0.000	64.815	730.00	0.00	0.00	0.00	40.5049700	-104.5850700	0.00	
830.00†	0.000	64.815	830.00	0.00	0.00	0.00	40.5049700	-104.5850700	0.00	
930.00†	0.000	64.815	930.00	0.00	0.00	0.00	40.5049700	-104.5850700	0.00	
1030.00†	0.000	64.815	1030.00	0.00	0.00	0.00	40.5049700	-104.5850700	0.00	
1130.00†	0.000	64.815	1130.00	0.00	0.00	0.00	40.5049700	-104.5850700	0.00	
1230.00†	0.000	64.815	1230.00	0.00	0.00	0.00	40.5049700	-104.5850700	0.00	
1330.00†	0.000	64.815	1330.00	0.00	0.00	0.00	40.5049700	-104.5850700	0.00	
1430.00†	0.000	64.815	1430.00	0.00	0.00	0.00	40.5049700	-104.5850700	0.00	
1530.00†	0.000	64.815	1530.00	0.00	0.00	0.00	40.5049700	-104.5850700	0.00	
1630.00†	0.000	64.815	1630.00	0.00	0.00	0.00	40.5049700	-104.5850700	0.00	
1730.00†	0.000	64.815	1730.00	0.00	0.00	0.00	40.5049700	-104.5850700	0.00	
1830.00†	0.000	64.815	1830.00	0.00	0.00	0.00	40.5049700	-104.5850700	0.00	
1930.00†	0.000	64.815	1930.00	0.00	0.00	0.00	40.5049700	-104.5850700	0.00	
2000.00	0.000	64.815	2000.00	0.00	0.00	0.00	40.5049700	-104.5850700	0.00	End of Tangent
2030.00†	0.600	64.815	2030.00	0.08	0.07	0.14	40.5049702	-104.5850695	2.00	
2130.00†	2.600	64.815	2129.96	1.56	1.25	2.67	40.5049734	-104.5850604	2.00	
2230.00†	4.600	64.815	2229.75	4.88	3.93	8.35	40.5049805	-104.5850398	2.00	
2330.00†	6.600	64.815	2329.27	10.04	8.08	17.18	40.5049917	-104.5850079	2.00	
2430.00†	8.600	64.815	2428.39	17.03	13.71	29.15	40.5050068	-104.5849647	2.00	
2530.00†	10.600	64.815	2526.98	25.84	20.80	44.24	40.5050258	-104.5849102	2.00	
2630.00†	12.600	64.815	2624.93	36.47	29.36	62.43	40.5050488	-104.5848444	2.00	
2730.00†	14.600	64.815	2722.13	48.90	39.37	83.71	40.5050757	-104.5847675	2.00	
2830.00†	16.600	64.815	2818.44	63.11	50.81	108.05	40.5051064	-104.5846796	2.00	
2930.00†	18.600	64.815	2913.75	79.10	63.67	135.41	40.5051409	-104.5845807	2.00	
3019.45	20.389	64.815	2998.07	94.87	76.38	162.42	40.5051750	-104.5844831	2.00	Build (XS)
3030.00†	20.389	64.815	3007.96	96.82	77.94	165.75	40.5051792	-104.5844711	0.00	
3130.00†	20.389	64.815	3101.69	115.23	92.77	197.27	40.5052190	-104.5843572	0.00	
3230.00†	20.389	64.815	3195.43	133.65	107.59	228.80	40.5052588	-104.5842433	0.00	
3330.00†	20.389	64.815	3289.16	152.07	122.42	260.33	40.5052986	-104.5841294	0.00	
3430.00†	20.389	64.815	3382.90	170.48	137.24	291.86	40.5053384	-104.5840155	0.00	
3530.00†	20.389	64.815	3476.63	188.90	152.07	323.38	40.5053782	-104.5839015	0.00	
3630.00†	20.389	64.815	3570.37	207.31	166.89	354.91	40.5054180	-104.5837876	0.00	
3730.00†	20.389	64.815	3664.10	225.73	181.72	386.44	40.5054578	-104.5836737	0.00	
3830.00†	20.389	64.815	3757.84	244.15	196.55	417.97	40.5054976	-104.5835598	0.00	
3930.00†	20.389	64.815	3851.57	262.56	211.37	449.49	40.5055374	-104.5834459	0.00	
4030.00†	20.389	64.815	3945.31	280.98	226.20	481.02	40.5055772	-104.5833319	0.00	
4130.00†	20.389	64.815	4039.04	299.39	241.02	512.55	40.5056170	-104.5832180	0.00	



Planned Wellpath Report  
BISHOP A05-773 (REV-A.0) PWP  
Page 3 of 7



REFERENCE WELLPATH IDENTIFICATION			
Operator	NOBLE ENERGY, INC	Well	BISHOP A05-773
Field	WELD COUNTY (NOBLE NAD 83 GRID)	API/Legal	
Facility	SEC.07-T06N-R64W	Wellbore	BISHOP A05-773 PWB
Slot	SLOT#26 BISHOP A05-773 (1011'FNL & 388'FEL,SEC.07)		

WELLPATH DATA (183 stations) † = interpolated, ‡ = extrapolated station										
MD [ft]	Inclination [°]	Azimuth [°]	TVD [ft]	Vert Sect [ft]	North [ft]	East [ft]	Latitude	Longitude	DLS [°/100ft]	Comments
4230.00†	20.389	64.815	4132.78	317.81	255.85	544.08	40.5056568	-104.5831041	0.00	
4330.00†	20.389	64.815	4226.51	336.23	270.67	575.60	40.5056966	-104.5829902	0.00	
4430.00†	20.389	64.815	4320.25	354.64	285.50	607.13	40.5057364	-104.5828763	0.00	
4530.00†	20.389	64.815	4413.98	373.06	300.32	638.66	40.5057762	-104.5827624	0.00	
4630.00†	20.389	64.815	4507.72	391.47	315.15	670.18	40.5058160	-104.5826484	0.00	
4730.00†	20.389	64.815	4601.45	409.89	329.98	701.71	40.5058558	-104.5825345	0.00	
4830.00†	20.389	64.815	4695.19	428.31	344.80	733.24	40.5058956	-104.5824206	0.00	
4930.00†	20.389	64.815	4788.92	446.72	359.63	764.77	40.5059354	-104.5823067	0.00	
5030.00†	20.389	64.815	4882.66	465.14	374.45	796.29	40.5059752	-104.5821928	0.00	
5130.00†	20.389	64.815	4976.39	483.55	389.28	827.82	40.5060150	-104.5820788	0.00	
5230.00†	20.389	64.815	5070.13	501.97	404.10	859.35	40.5060548	-104.5819649	0.00	
5330.00†	20.389	64.815	5163.86	520.39	418.93	890.88	40.5060946	-104.5818510	0.00	
5430.00†	20.389	64.815	5257.60	538.80	433.75	922.40	40.5061344	-104.5817371	0.00	
5530.00†	20.389	64.815	5351.33	557.22	448.58	953.93	40.5061742	-104.5816232	0.00	
5630.00†	20.389	64.815	5445.07	575.63	463.41	985.46	40.5062139	-104.5815092	0.00	
5730.00†	20.389	64.815	5538.80	594.05	478.23	1016.99	40.5062537	-104.5813953	0.00	
5830.00†	20.389	64.815	5632.54	612.47	493.06	1048.51	40.5062935	-104.5812814	0.00	
5930.00†	20.389	64.815	5726.27	630.88	507.88	1080.04	40.5063333	-104.5811675	0.00	
6030.00†	20.389	64.815	5820.01	649.30	522.71	1111.57	40.5063731	-104.5810536	0.00	
6130.00†	20.389	64.815	5913.74	667.71	537.53	1143.10	40.5064129	-104.5809396	0.00	
6230.00†	20.389	64.815	6007.47	686.13	552.36	1174.62	40.5064527	-104.5808257	0.00	
6330.00†	20.389	64.815	6101.21	704.55	567.18	1206.15	40.5064925	-104.5807118	0.00	
6430.00†	20.389	64.815	6194.94	722.96	582.01	1237.68	40.5065323	-104.5805979	0.00	
6530.00†	20.389	64.815	6288.68	741.38	596.83	1269.21	40.5065721	-104.5804840	0.00	
6630.00†	20.389	64.815	6382.41	759.79	611.66	1300.73	40.5066119	-104.5803700	0.00	
6647.61	20.389	64.815	6398.92	763.04	614.27	1306.29	40.5066189	-104.5803500	0.00	KOP
6730.00†	24.233	48.002	6475.21	783.36	631.72	1331.87	40.5066661	-104.5802573	9.00	
6830.00†	30.623	34.128	6564.01	821.47	666.60	1361.48	40.5067610	-104.5801496	9.00	
6930.00†	38.000	24.928	6646.61	873.43	715.70	1388.80	40.5068949	-104.5800495	9.00	
7030.00†	45.887	18.415	6720.97	937.96	777.80	1413.16	40.5070647	-104.5799596	9.00	
7130.00†	54.055	13.467	6785.25	1013.47	851.38	1433.97	40.5072661	-104.5798820	9.00	
7230.00†	62.388	9.459	6837.88	1098.10	934.62	1450.71	40.5074941	-104.5798187	9.00	
7330.00†	70.820	6.025	6877.57	1189.76	1025.48	1462.98	40.5077431	-104.5797712	9.00	
7430.00†	79.309	2.928	6903.32	1286.21	1121.71	1470.46	40.5080070	-104.5797407	9.00	
7530.00†	87.827	0.002	6914.52	1385.05	1220.94	1472.98	40.5082793	-104.5797279	9.00	
7555.49	90.000	359.266	6915.00†	1410.34	1246.42	1472.81	40.5083492	-104.5797276	9.00	LP/TPZ
7630.00†	90.000	359.266	6915.00	1484.22	1320.93	1471.86	40.5085537	-104.5797282	0.00	
7730.00†	90.000	359.266	6915.00	1583.38	1420.92	1470.58	40.5088282	-104.5797291	0.00	
7830.00†	90.000	359.266	6915.00	1682.53	1520.91	1469.30	40.5091027	-104.5797300	0.00	
7930.00†	90.000	359.266	6915.00	1781.68	1620.90	1468.02	40.5093772	-104.5797308	0.00	
8030.00†	90.000	359.266	6915.00	1880.84	1720.90	1466.74	40.5096517	-104.5797317	0.00	
8130.00†	90.000	359.266	6915.00	1979.99	1820.89	1465.45	40.5099262	-104.5797326	0.00	
8230.00†	90.000	359.266	6915.00	2079.14	1920.88	1464.17	40.5102007	-104.5797335	0.00	
8330.00†	90.000	359.266	6915.00	2178.30	2020.87	1462.89	40.5104751	-104.5797343	0.00	
8430.00†	90.000	359.266	6915.00	2277.45	2120.86	1461.61	40.5107496	-104.5797352	0.00	



Planned Wellpath Report  
BISHOP A05-773 (REV-A.0) PWP  
Page 4 of 7



REFERENCE WELLPATH IDENTIFICATION			
Operator	NOBLE ENERGY, INC	Well	BISHOP A05-773
Field	WELD COUNTY (NOBLE NAD 83 GRID)	API/Legal	
Facility	SEC.07-T06N-R64W	Wellbore	BISHOP A05-773 PWB
Slot	SLOT#26 BISHOP A05-773 (1011'FNL & 388'FEL,SEC.07)		

WELLPATH DATA (183 stations) † = interpolated, ‡ = extrapolated station										
MD [ft]	Inclination [°]	Azimuth [°]	TVD [ft]	Vert Sect [ft]	North [ft]	East [ft]	Latitude	Longitude	DLS [°/100ft]	Comments
8530.00†	90.000	359.266	6915.00	2376.61	2220.85	1460.33	40.5110241	-104.5797361	0.00	
8630.00†	90.000	359.266	6915.00	2475.76	2320.85	1459.05	40.5112986	-104.5797370	0.00	
8730.00†	90.000	359.266	6915.00	2574.91	2420.84	1457.77	40.5115731	-104.5797378	0.00	
8830.00†	90.000	359.266	6915.00	2674.07	2520.83	1456.49	40.5118476	-104.5797387	0.00	
8930.00†	90.000	359.266	6915.00	2773.22	2620.82	1455.21	40.5121220	-104.5797396	0.00	
9030.00†	90.000	359.266	6915.00	2872.37	2720.81	1453.93	40.5123965	-104.5797405	0.00	
9130.00†	90.000	359.266	6915.00	2971.53	2820.81	1452.65	40.5126710	-104.5797413	0.00	
9230.00†	90.000	359.266	6915.00	3070.68	2920.80	1451.36	40.5129455	-104.5797422	0.00	
9330.00†	90.000	359.266	6915.00	3169.83	3020.79	1450.08	40.5132200	-104.5797431	0.00	
9430.00†	90.000	359.266	6915.00	3268.99	3120.78	1448.80	40.5134945	-104.5797440	0.00	
9530.00†	90.000	359.266	6915.00	3368.14	3220.77	1447.52	40.5137689	-104.5797448	0.00	
9630.00†	90.000	359.266	6915.00	3467.29	3320.76	1446.24	40.5140434	-104.5797457	0.00	
9730.00†	90.000	359.266	6915.00	3566.45	3420.76	1444.96	40.5143179	-104.5797466	0.00	
9830.00†	90.000	359.266	6915.00	3665.60	3520.75	1443.68	40.5145924	-104.5797475	0.00	
9930.00†	90.000	359.266	6915.00	3764.76	3620.74	1442.40	40.5148669	-104.5797483	0.00	
10030.00†	90.000	359.266	6915.00	3863.91	3720.73	1441.12	40.5151414	-104.5797492	0.00	
10130.00†	90.000	359.266	6915.00	3963.06	3820.72	1439.84	40.5154158	-104.5797501	0.00	
10230.00†	90.000	359.266	6915.00	4062.22	3920.72	1438.55	40.5156903	-104.5797510	0.00	
10330.00†	90.000	359.266	6915.00	4161.37	4020.71	1437.27	40.5159648	-104.5797518	0.00	
10430.00†	90.000	359.266	6915.00	4260.52	4120.70	1435.99	40.5162393	-104.5797527	0.00	
10530.00†	90.000	359.266	6915.00	4359.68	4220.69	1434.71	40.5165138	-104.5797536	0.00	
10630.00†	90.000	359.266	6915.00	4458.83	4320.68	1433.43	40.5167883	-104.5797545	0.00	
10730.00†	90.000	359.266	6915.00	4557.98	4420.67	1432.15	40.5170627	-104.5797553	0.00	
10830.00†	90.000	359.266	6915.00	4657.14	4520.67	1430.87	40.5173372	-104.5797562	0.00	
10930.00†	90.000	359.266	6915.00	4756.29	4620.66	1429.59	40.5176117	-104.5797571	0.00	
11030.00†	90.000	359.266	6915.00	4855.45	4720.65	1428.31	40.5178862	-104.5797580	0.00	
11130.00†	90.000	359.266	6915.00	4954.60	4820.64	1427.03	40.5181607	-104.5797588	0.00	
11230.00†	90.000	359.266	6915.00	5053.75	4920.63	1425.75	40.5184352	-104.5797597	0.00	
11330.00†	90.000	359.266	6915.00	5152.91	5020.63	1424.46	40.5187096	-104.5797606	0.00	
11430.00†	90.000	359.266	6915.00	5252.06	5120.62	1423.18	40.5189841	-104.5797615	0.00	
11530.00†	90.000	359.266	6915.00	5351.21	5220.61	1421.90	40.5192586	-104.5797623	0.00	
11630.00†	90.000	359.266	6915.00	5450.37	5320.60	1420.62	40.5195331	-104.5797632	0.00	
11730.00†	90.000	359.266	6915.00	5549.52	5420.59	1419.34	40.5198076	-104.5797641	0.00	
11830.00†	90.000	359.266	6915.00	5648.67	5520.58	1418.06	40.5200821	-104.5797650	0.00	
11930.00†	90.000	359.266	6915.00	5747.83	5620.58	1416.78	40.5203565	-104.5797658	0.00	
12030.00†	90.000	359.266	6915.00	5846.98	5720.57	1415.50	40.5206310	-104.5797667	0.00	
12130.00†	90.000	359.266	6915.00	5946.13	5820.56	1414.22	40.5209055	-104.5797676	0.00	
12230.00†	90.000	359.266	6915.00	6045.29	5920.55	1412.94	40.5211800	-104.5797685	0.00	
12330.00†	90.000	359.266	6915.00	6144.44	6020.54	1411.66	40.5214545	-104.5797693	0.00	
12430.00†	90.000	359.266	6915.00	6243.60	6120.53	1410.37	40.5217290	-104.5797702	0.00	
12530.00†	90.000	359.266	6915.00	6342.75	6220.53	1409.09	40.5220034	-104.5797711	0.00	
12630.00†	90.000	359.266	6915.00	6441.90	6320.52	1407.81	40.5222779	-104.5797720	0.00	
12730.00†	90.000	359.266	6915.00	6541.06	6420.51	1406.53	40.5225524	-104.5797728	0.00	
12830.00†	90.000	359.266	6915.00	6640.21	6520.50	1405.25	40.5228269	-104.5797737	0.00	
12930.00†	90.000	359.266	6915.00	6739.36	6620.49	1403.97	40.5231014	-104.5797746	0.00	





Planned Wellpath Report  
BISHOP A05-773 (REV-A.0) PWP  
Page 5 of 7



REFERENCE WELLPATH IDENTIFICATION			
Operator	NOBLE ENERGY, INC	Well	BISHOP A05-773
Field	WELD COUNTY (NOBLE NAD 83 GRID)	API/Legal	
Facility	SEC.07-T06N-R64W	Wellbore	BISHOP A05-773 PWB
Slot	SLOT#26 BISHOP A05-773 (1011'FNL & 388'FEL,SEC.07)		

WELLPATH DATA (183 stations) † = interpolated, ‡ = extrapolated station										
MD [ft]	Inclination [°]	Azimuth [°]	TVD [ft]	Vert Sect [ft]	North [ft]	East [ft]	Latitude	Longitude	DLS [°/100ft]	Comments
13030.00†	90.000	359.266	6915.00	6838.52	6720.49	1402.69	40.5233758	-104.5797755	0.00	
13130.00†	90.000	359.266	6915.00	6937.67	6820.48	1401.41	40.5236503	-104.5797763	0.00	
13230.00†	90.000	359.266	6915.00	7036.82	6920.47	1400.13	40.5239248	-104.5797772	0.00	
13330.00†	90.000	359.266	6915.00	7135.98	7020.46	1398.85	40.5241993	-104.5797781	0.00	
13430.00†	90.000	359.266	6915.00	7235.13	7120.45	1397.57	40.5244738	-104.5797790	0.00	
13530.00†	90.000	359.266	6915.00	7334.29	7220.44	1396.28	40.5247483	-104.5797798	0.00	
13630.00†	90.000	359.266	6915.00	7433.44	7320.44	1395.00	40.5250227	-104.5797807	0.00	
13730.00†	90.000	359.266	6915.00	7532.59	7420.43	1393.72	40.5252972	-104.5797816	0.00	
13830.00†	90.000	359.266	6915.00	7631.75	7520.42	1392.44	40.5255717	-104.5797825	0.00	
13930.00†	90.000	359.266	6915.00	7730.90	7620.41	1391.16	40.5258462	-104.5797833	0.00	
14030.00†	90.000	359.266	6915.00	7830.05	7720.40	1389.88	40.5261207	-104.5797842	0.00	
14130.00†	90.000	359.266	6915.00	7929.21	7820.40	1388.60	40.5263952	-104.5797851	0.00	
14230.00†	90.000	359.266	6915.00	8028.36	7920.39	1387.32	40.5266696	-104.5797860	0.00	
14330.00†	90.000	359.266	6915.00	8127.51	8020.38	1386.04	40.5269441	-104.5797868	0.00	
14430.00†	90.000	359.266	6915.00	8226.67	8120.37	1384.76	40.5272186	-104.5797877	0.00	
14530.00†	90.000	359.266	6915.00	8325.82	8220.36	1383.47	40.5274931	-104.5797886	0.00	
14630.00†	90.000	359.266	6915.00	8424.97	8320.35	1382.19	40.5277676	-104.5797895	0.00	
14730.00†	90.000	359.266	6915.00	8524.13	8420.35	1380.91	40.5280421	-104.5797903	0.00	
14830.00†	90.000	359.266	6915.00	8623.28	8520.34	1379.63	40.5283165	-104.5797912	0.00	
14930.00†	90.000	359.266	6915.00	8722.44	8620.33	1378.35	40.5285910	-104.5797921	0.00	
15030.00†	90.000	359.266	6915.00	8821.59	8720.32	1377.07	40.5288655	-104.5797930	0.00	
15130.00†	90.000	359.266	6915.00	8920.74	8820.31	1375.79	40.5291400	-104.5797938	0.00	
15230.00†	90.000	359.266	6915.00	9019.90	8920.31	1374.51	40.5294145	-104.5797947	0.00	
15330.00†	90.000	359.266	6915.00	9119.05	9020.30	1373.23	40.5296889	-104.5797956	0.00	
15430.00†	90.000	359.266	6915.00	9218.20	9120.29	1371.95	40.5299634	-104.5797965	0.00	
15530.00†	90.000	359.266	6915.00	9317.36	9220.28	1370.67	40.5302379	-104.5797973	0.00	
15630.00†	90.000	359.266	6915.00	9416.51	9320.27	1369.38	40.5305124	-104.5797982	0.00	
15730.00†	90.000	359.266	6915.00	9515.66	9420.26	1368.10	40.5307869	-104.5797991	0.00	
15830.00†	90.000	359.266	6915.00	9614.82	9520.26	1366.82	40.5310614	-104.5798000	0.00	
15930.00†	90.000	359.266	6915.00	9713.97	9620.25	1365.54	40.5313358	-104.5798008	0.00	
16030.00†	90.000	359.266	6915.00	9813.13	9720.24	1364.26	40.5316103	-104.5798017	0.00	
16130.00†	90.000	359.266	6915.00	9912.28	9820.23	1362.98	40.5318848	-104.5798026	0.00	
16230.00†	90.000	359.266	6915.00	10011.43	9920.22	1361.70	40.5321593	-104.5798035	0.00	
16330.00†	90.000	359.266	6915.00	10110.59	10020.21	1360.42	40.5324338	-104.5798043	0.00	
16430.00†	90.000	359.266	6915.00	10209.74	10120.21	1359.14	40.5327083	-104.5798052	0.00	
16530.00†	90.000	359.266	6915.00	10308.89	10220.20	1357.86	40.5329827	-104.5798061	0.00	
16630.00†	90.000	359.266	6915.00	10408.05	10320.19	1356.58	40.5332572	-104.5798070	0.00	
16730.00†	90.000	359.266	6915.00	10507.20	10420.18	1355.29	40.5335317	-104.5798078	0.00	
16830.00†	90.000	359.266	6915.00	10606.35	10520.17	1354.01	40.5338062	-104.5798087	0.00	
16930.00†	90.000	359.266	6915.00	10705.51	10620.17	1352.73	40.5340807	-104.5798096	0.00	
17030.00†	90.000	359.266	6915.00	10804.66	10720.16	1351.45	40.5343551	-104.5798105	0.00	
17130.00†	90.000	359.266	6915.00	10903.81	10820.15	1350.17	40.5346296	-104.5798113	0.00	
17230.00†	90.000	359.266	6915.00	11002.97	10920.14	1348.89	40.5349041	-104.5798122	0.00	
17330.00†	90.000	359.266	6915.00	11102.12	11020.13	1347.61	40.5351786	-104.5798131	0.00	
17430.00†	90.000	359.266	6915.00	11201.28	11120.12	1346.33	40.5354531	-104.5798140	0.00	



Planned Wellpath Report

BISHOP A05-773 (REV-A.0) PWP

Page 6 of 7



REFERENCE WELLPATH IDENTIFICATION			
Operator	NOBLE ENERGY, INC	Well	BISHOP A05-773
Field	WELD COUNTY (NOBLE NAD 83 GRID)	API/Legal	
Facility	SEC.07-T06N-R64W	Wellbore	BISHOP A05-773 PWB
Slot	SLOT#26 BISHOP A05-773 (1011'FNL & 388'FEL,SEC.07)		

WELLPATH DATA (183 stations) † = interpolated, ‡ = extrapolated station										
MD [ft]	Inclination [°]	Azimuth [°]	TVD [ft]	Vert Sect [ft]	North [ft]	East [ft]	Latitude	Longitude	DLS [°/100ft]	Comments
17530.00†	90.000	359.266	6915.00	11300.43	11220.12	1345.05	40.5357276	-104.5798148	0.00	
17630.00†	90.000	359.266	6915.00	11399.58	11320.11	1343.77	40.5360020	-104.5798157	0.00	
17696.99	90.000	359.266	6915.00 <sup>2</sup>	11466.00	11387.09	1342.91	40.5361859	-104.5798163	0.00	BHL

HOLE & CASING SECTIONS - Ref Wellbore: BISHOP A05-773 PWB    Ref Wellpath: BISHOP A05-773 (REV-A.0) PWP									
String/Diameter	Start MD [ft]	End MD [ft]	Interval [ft]	Start TVD [ft]	End TVD [ft]	Start N/S [ft]	Start E/W [ft]	End N/S [ft]	End E/W [ft]
9.625in Casing Surface	30.00	1950.00	1920.00	30.00	1950.00	0.00	0.00	0.00	0.00

TARGETS									
Name	MD [ft]	TVD [ft]	North [ft]	East [ft]	Grid East [US ft]	Grid North [US ft]	Latitude	Longitude	Shape
OGDP 1 SEC.07-T06N-R64W	N/A	3.00	148.99	-37.69	3254380.72	1428262.61	40.5053800	-104.5852000	polygon
	2D Polygon: dimensions not calculated								
OGDP 1 SEC.08-T06N-R64W	N/A	3.00	148.99	-37.69	3254380.72	1428262.61	40.5053800	-104.5852000	polygon
	2D Polygon: dimensions not calculated								
OGDP1 SEC.05-T06N-R64W	N/A	21.00	167.42	-4290.05	3250128.51	1428281.04	40.5055500	-104.6004900	polygon
	2D Polygon: dimensions not calculated								
OGDP1 SEC.32-T07N-R64W	N/A	21.00	167.42	-4290.05	3250128.51	1428281.04	40.5055500	-104.6004900	polygon
	2D Polygon: dimensions not calculated								
2) BISHOP A05-773 BHL Rev-1 (200'FSL & 993'FWL,SEC.32)	17696.99	6915.00	11387.09	1342.91	3255761.27	1439500.31	40.5361859	-104.5798163	point
1) BISHOP A05-773 LP Rev-1 (200'FSL & 1096'FWL,SEC.05)	7555.49	6915.00	1246.42	1472.81	3255891.17	1429360.00	40.5083492	-104.5797276	point

SURVEY PROGRAM - Ref Wellbore: BISHOP A05-773 PWB    Ref Wellpath: BISHOP A05-773 (REV-A.0) PWP				
Start MD [ft]	End MD [ft]	Positional Uncertainty Model	Log Name/Comment	Wellbore
30.00	17696.99	OWSG MWD rev2 (MS+IFR1)		BISHOP A05-773 PWB



Planned Wellpath Report  
BISHOP A05-773 (REV-A.0) PWP  
Page 7 of 7



REFERENCE WELLPATH IDENTIFICATION			
Operator	NOBLE ENERGY, INC	Well	BISHOP A05-773
Field	WELD COUNTY (NOBLE NAD 83 GRID)	API/Legal	
Facility	SEC.07-T06N-R64W	Wellbore	BISHOP A05-773 PWB
Slot	SLOT#26 BISHOP A05-773 (1011'FNL & 388'FEL,SEC.07)		

DESIGN COMMENTS				
MD [ft]	Inclination [°]	Azimuth [°]	TVD [ft]	Comment
30.00	0.000	64.815	30.00	SHL
2000.00	0.000	64.815	2000.00	End of Tangent
3019.45	20.389	64.815	2998.07	Build (XS)
6647.61	20.389	64.815	6398.92	KOP
7555.49	90.000	359.266	6915.00	LP/TPZ
17696.99	90.000	359.266	6915.00	BHL