

NOBLE ENERGY, INC



Location: COLORADO Slot: SLOT#25 BISHOP A05-783 (1011 FNL & 426 FEL, SEC.07)
 Field: WELD COUNTY (NOBLE NAD 83 GRID) Well: BISHOP A05-783
 Facility: SEC.07-T06N-R64W Wellbore: BISHOP A05-783 PWB

Plot reference wellpath is BISHOP A05-783 (REV-A.0) PWP
 True vertical depths are referenced to (4744 GL+30KB@4774 RKB) (RKB)
 Reference wellpath measured depths are referenced to (4744 GL+30KB@4774 RKB) (RKB)
 (4744 GL+30KB@4774 RKB) to Mean Sea Level: 4774 feet
 Mean Sea Level to Ground level (At Slot: SLOT#25 BISHOP A05-783 (1011 FNL & 426 FEL, SEC.07): 0 feet
 Offset wellpath MDs are referenced to each path's default MD datum
 Grid System: NAD83 / Lambert Colorado SP, Northern Zone (501), US feet
 North Reference: Grid north
 Scale: True distance
 Coordinates are in feet referenced to Slot
 Depths are in feet
 Created by: guemaler on 2023-01-17, Database: WA_Denver

Location Information

Facility Name		Grid East (US ft)	Grid North (US ft)	Latitude	Longitude	
SEC.07-T06N-R64W		3254380.716	1428262.611	40°30'19.3680"N	104°35'6.7200"W	
Slot	Local N (ft)	Local E (ft)	Grid East (US ft)	Grid North (US ft)	Latitude	Longitude
SLOT#25 BISHOP A05-783 (1011 FNL & 426 FEL, SEC.07)	-149.39	-1.24	3254379.476	1428113.225	40°30'17.8920"N	104°35'6.7560"W
(4744 GL+30KB@4774 RKB) to Ground level (At Slot: SLOT#25 BISHOP A05-783 (1011 FNL & 426 FEL, SEC.07))						4774ft
Mean Sea Level to Ground level (At Slot: SLOT#25 BISHOP A05-783 (1011 FNL & 426 FEL, SEC.07))						0ft
(4744 GL+30KB@4774 RKB) to Mean Sea Level						4774ft

Well Profile Data

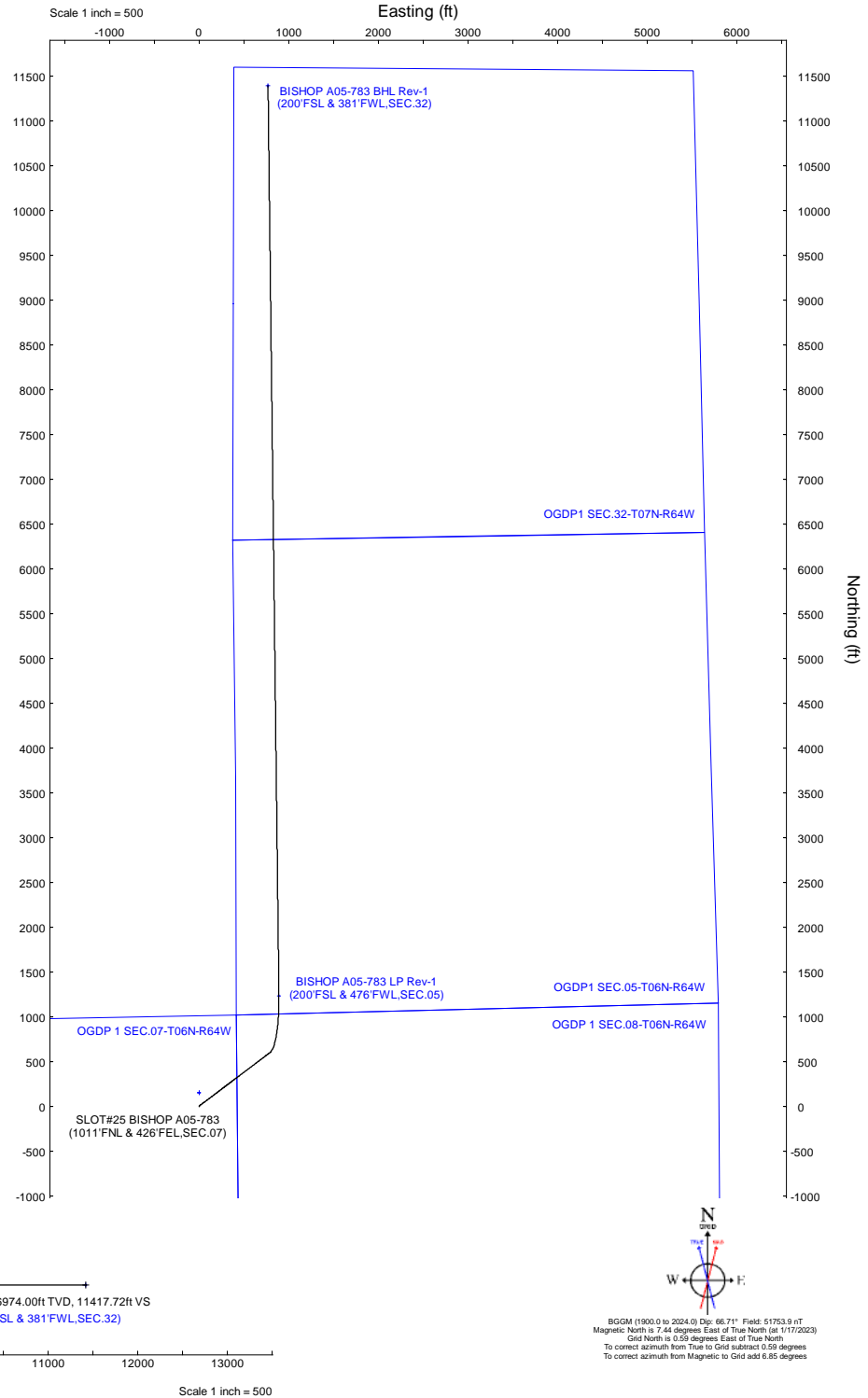
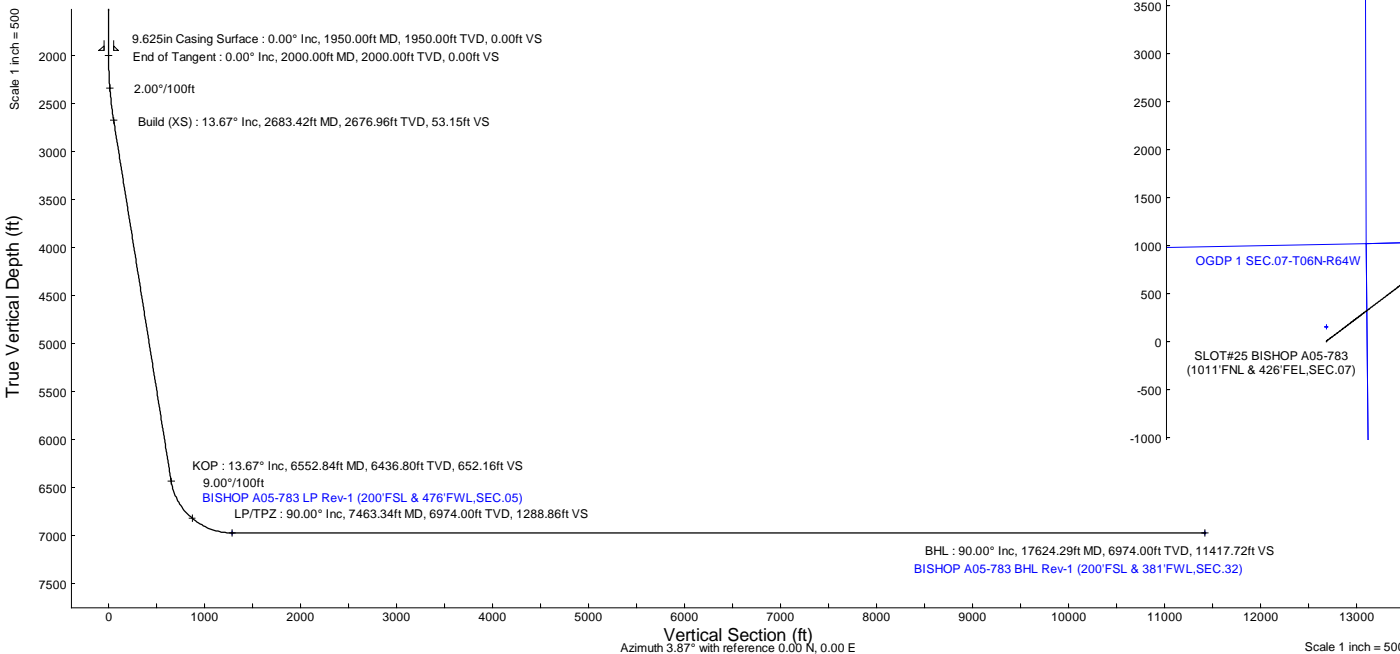
Design Comment	MD (ft)	Inc (")	Az (°)	TVD (ft)	Local N (ft)	Local E (ft)	DLS (*/100ft)	VS (ft)
SHL	30.00	0.000	52.942	30.00	0.00	0.00	0.00	0.00
End of Tangent	2000.00	0.000	52.942	2000.00	0.00	0.00	0.00	0.00
Build (XS)	2683.42	13.668	52.942	2676.96	48.89	64.75	2.00	53.15
KOP	6552.84	13.668	52.942	6436.80	599.91	794.42	0.00	652.16
LP/TPZ	7463.34	90.000	359.315	6974.00	1231.46	892.07	9.00	1288.86
BHL	17624.29	90.000	359.315	6974.00	11391.68	770.58	0.00	11417.72

Targets

Name	MD (ft)	TVD (ft)	Local N (ft)	Local E (ft)	Grid East (US ft)	Grid North (US ft)	Latitude	Longitude
OGDP 1 SEC.07-T06N-R64W	N/A	2.00	149.39	1.24	3254380.72	1428262.61	40°30'19.3680"N	104°35'6.7200"W
OGDP 1 SEC.08-T06N-R64W	N/A	2.00	149.39	1.24	3254380.72	1428262.61	40°30'19.3680"N	104°35'6.7200"W
OGDP1 SEC.05-T06N-R64W	N/A	20.00	167.83	-4251.12	3250128.51	1428281.04	40°30'19.9800"N	104°36'1.7640"W
OGDP1 SEC.32-T07N-R64W	N/A	20.00	167.83	-4251.12	3250128.51	1428281.04	40°30'19.9800"N	104°36'1.7640"W
BISHOP A05-783 BHL Rev-1 (200 FSL & 381 FWL, SEC.32)	17624.29	6974.00	11391.68	770.58	3255150.03	1439504.51	40°32'10.3733"N	104°34'55.2543"W
BISHOP A05-783 LP Rev-1 (200 FSL & 476 FWL, SEC.05)	7463.34	6974.00	1231.46	892.07	3255271.51	1429344.64	40°30'29.9689"N	104°34'55.0433"W

Survey Program

Start MD (ft)	End MD (ft)	Tool	Model	Log Name/Comment	Wellbore
30.00	17624.29	OWSG MWD rev2	OWSG MWD rev2 (MS+IFR1)		BISHOP A05-783 PWB





Planned Wellpath Report

BISHOP A05-783 (REV-A.0) PWP

Page 1 of 7



REFERENCE WELLPATH IDENTIFICATION

Operator	NOBLE ENERGY, INC	Well	BISHOP A05-783
Field	WELD COUNTY (NOBLE NAD 83 GRID)	API/Legal	
Facility	SEC.07-T06N-R64W	Wellbore	BISHOP A05-783 PWB
Slot	SLOT#25 BISHOP A05-783 (1011'FNL & 426'FEL,SEC.07)		

REPORT SETUP INFORMATION

Projection System	NAD83 / Lambert Colorado SP, Northern Zone (501), US feet	Software System	WellArchitect® 6.0
North Reference	Grid	User	Guenaler
Scale	0.999967	Report Generated	1/17/2023 at 12:51:01 PM
Convergence at slot	0.59° East	Database	WA_Denver

WELLPATH LOCATION

	Local coordinates		Grid coordinates		Geographic coordinates	
	North[ft]	East[ft]	Easting[US ft]	Northing[US ft]	Latitude	Longitude
Slot Location	-149.39	-1.24	3254379.48	1428113.23	40.5049700°	-104.5852100°
Facility Reference Pt			3254380.72	1428262.61	40.5053800°	-104.5852000°
Field Reference Pt			3000000.00	4454105.15	48.7761986°	-105.5000000°

WELLPATH DATUM

Calculation method	Minimum curvature	(4744'GL+30'KB@4774'RKB) (RKB) to Facility Vertical Datum	4774.00ft
Horizontal Reference Pt	Slot	(4744'GL+30'KB@4774'RKB) (RKB) to Mean Sea Level	4774.00ft
Vertical Reference Pt	(4744'GL+30'KB@4774'RKB) (RKB)	(4744'GL+30'KB@4774'RKB) (RKB) to Ground Level at Slot (SLOT#25 BISHOP A05-783 (1011'FNL & 426'FEL,SEC.07))	4774.00ft
MD Reference Pt	(4744'GL+30'KB@4774'RKB) (RKB)	Section Origin	N 0.00, E 0.00 ft
Field Vertical Reference	Mean Sea Level	Section Azimuth	3.87°



Planned Wellpath Report

BISHOP A05-783 (REV-A.0) PWP
Page 2 of 7



REFERENCE WELLPATH IDENTIFICATION			
Operator	NOBLE ENERGY, INC	Well	BISHOP A05-783
Field	WELD COUNTY (NOBLE NAD 83 GRID)	API/Legal	
Facility	SEC.07-T06N-R64W	Wellbore	BISHOP A05-783 PWB
Slot	SLOT#25 BISHOP A05-783 (1011'FNL & 426'FEL,SEC.07)		

WELLPATH DATA (182 stations) † = interpolated, ‡ = extrapolated station										
MD [ft]	Inclination [°]	Azimuth [°]	TVD [ft]	Vert Sect [ft]	North [ft]	East [ft]	Latitude	Longitude	DLS [°/100ft]	Comments
0.00†	0.000	52.942	0.00	0.00	0.00	0.00	40.5049700	-104.5852100	0.00	
30.00	0.000	52.942	30.00	0.00	0.00	0.00	40.5049700	-104.5852100	0.00	SHL
130.00†	0.000	52.942	130.00	0.00	0.00	0.00	40.5049700	-104.5852100	0.00	
230.00†	0.000	52.942	230.00	0.00	0.00	0.00	40.5049700	-104.5852100	0.00	
330.00†	0.000	52.942	330.00	0.00	0.00	0.00	40.5049700	-104.5852100	0.00	
430.00†	0.000	52.942	430.00	0.00	0.00	0.00	40.5049700	-104.5852100	0.00	
530.00†	0.000	52.942	530.00	0.00	0.00	0.00	40.5049700	-104.5852100	0.00	
630.00†	0.000	52.942	630.00	0.00	0.00	0.00	40.5049700	-104.5852100	0.00	
730.00†	0.000	52.942	730.00	0.00	0.00	0.00	40.5049700	-104.5852100	0.00	
830.00†	0.000	52.942	830.00	0.00	0.00	0.00	40.5049700	-104.5852100	0.00	
930.00†	0.000	52.942	930.00	0.00	0.00	0.00	40.5049700	-104.5852100	0.00	
1030.00†	0.000	52.942	1030.00	0.00	0.00	0.00	40.5049700	-104.5852100	0.00	
1130.00†	0.000	52.942	1130.00	0.00	0.00	0.00	40.5049700	-104.5852100	0.00	
1230.00†	0.000	52.942	1230.00	0.00	0.00	0.00	40.5049700	-104.5852100	0.00	
1330.00†	0.000	52.942	1330.00	0.00	0.00	0.00	40.5049700	-104.5852100	0.00	
1430.00†	0.000	52.942	1430.00	0.00	0.00	0.00	40.5049700	-104.5852100	0.00	
1530.00†	0.000	52.942	1530.00	0.00	0.00	0.00	40.5049700	-104.5852100	0.00	
1630.00†	0.000	52.942	1630.00	0.00	0.00	0.00	40.5049700	-104.5852100	0.00	
1730.00†	0.000	52.942	1730.00	0.00	0.00	0.00	40.5049700	-104.5852100	0.00	
1830.00†	0.000	52.942	1830.00	0.00	0.00	0.00	40.5049700	-104.5852100	0.00	
1930.00†	0.000	52.942	1930.00	0.00	0.00	0.00	40.5049700	-104.5852100	0.00	
2000.00	0.000	52.942	2000.00	0.00	0.00	0.00	40.5049700	-104.5852100	0.00	End of Tangent
2030.00†	0.600	52.942	2030.00	0.10	0.09	0.13	40.5049703	-104.5852095	2.00	
2130.00†	2.600	52.942	2129.96	1.93	1.78	2.35	40.5049748	-104.5852015	2.00	
2230.00†	4.600	52.942	2229.75	6.05	5.56	7.36	40.5049851	-104.5851833	2.00	
2330.00†	6.600	52.942	2329.27	12.44	11.44	15.15	40.5050010	-104.5851551	2.00	
2430.00†	8.600	52.942	2428.39	21.10	19.41	25.70	40.5050225	-104.5851169	2.00	
2530.00†	10.600	52.942	2526.98	32.03	29.46	39.01	40.5050498	-104.5850686	2.00	
2630.00†	12.600	52.942	2624.93	45.20	41.58	55.06	40.5050826	-104.5850105	2.00	
2683.42	13.668	52.942	2676.96	53.15	48.89	64.75	40.5051024	-104.5849754	2.00	Build (XS)
2730.00†	13.668	52.942	2722.22	60.36	55.53	73.53	40.5051203	-104.5849435	0.00	
2830.00†	13.668	52.942	2819.38	75.84	69.77	92.39	40.5051589	-104.5848752	0.00	
2930.00†	13.668	52.942	2916.55	91.32	84.01	111.24	40.5051974	-104.5848069	0.00	
3030.00†	13.668	52.942	3013.72	106.80	98.25	130.10	40.5052360	-104.5847385	0.00	
3130.00†	13.668	52.942	3110.89	122.28	112.49	148.96	40.5052745	-104.5846702	0.00	
3230.00†	13.668	52.942	3208.06	137.76	126.73	167.82	40.5053131	-104.5846019	0.00	
3330.00†	13.668	52.942	3305.22	153.24	140.97	186.67	40.5053516	-104.5845335	0.00	
3430.00†	13.668	52.942	3402.39	168.72	155.21	205.53	40.5053902	-104.5844652	0.00	
3530.00†	13.668	52.942	3499.56	184.21	169.45	224.39	40.5054287	-104.5843969	0.00	
3630.00†	13.668	52.942	3596.73	199.69	183.69	243.25	40.5054673	-104.5843285	0.00	
3730.00†	13.668	52.942	3693.90	215.17	197.93	262.10	40.5055058	-104.5842602	0.00	
3830.00†	13.668	52.942	3791.06	230.65	212.17	280.96	40.5055444	-104.5841918	0.00	
3930.00†	13.668	52.942	3888.23	246.13	226.41	299.82	40.5055829	-104.5841235	0.00	
4030.00†	13.668	52.942	3985.40	261.61	240.65	318.68	40.5056215	-104.5840552	0.00	
4130.00†	13.668	52.942	4082.57	277.09	254.89	337.53	40.5056600	-104.5839868	0.00	



Planned Wellpath Report

BISHOP A05-783 (REV-A.0) PWP

Page 3 of 7



REFERENCE WELLPATH IDENTIFICATION

Operator	NOBLE ENERGY, INC	Well	BISHOP A05-783
Field	WELD COUNTY (NOBLE NAD 83 GRID)	API/Legal	
Facility	SEC.07-T06N-R64W	Wellbore	BISHOP A05-783 PWB
Slot	SLOT#25 BISHOP A05-783 (1011'FNL & 426'FEL,SEC.07)		

WELLPATH DATA (182 stations) † = interpolated, ‡ = extrapolated station

MD [ft]	Inclination [°]	Azimuth [°]	TVD [ft]	Vert Sect [ft]	North [ft]	East [ft]	Latitude	Longitude	DLS [°/100ft]	Comments
4230.00†	13.668	52.942	4179.74	292.57	269.13	356.39	40.5056986	-104.5839185	0.00	
4330.00†	13.668	52.942	4276.90	308.05	283.37	375.25	40.5057371	-104.5838502	0.00	
4430.00†	13.668	52.942	4374.07	323.53	297.61	394.11	40.5057757	-104.5837818	0.00	
4530.00†	13.668	52.942	4471.24	339.01	311.85	412.96	40.5058142	-104.5837135	0.00	
4630.00†	13.668	52.942	4568.41	354.49	326.09	431.82	40.5058528	-104.5836451	0.00	
4730.00†	13.668	52.942	4665.58	369.97	340.33	450.68	40.5058913	-104.5835768	0.00	
4830.00†	13.668	52.942	4762.74	385.45	354.57	469.54	40.5059299	-104.5835085	0.00	
4930.00†	13.668	52.942	4859.91	400.93	368.81	488.39	40.5059684	-104.5834401	0.00	
5030.00†	13.668	52.942	4957.08	416.41	383.05	507.25	40.5060070	-104.5833718	0.00	
5130.00†	13.668	52.942	5054.25	431.89	397.29	526.11	40.5060455	-104.5833035	0.00	
5230.00†	13.668	52.942	5151.42	447.37	411.53	544.97	40.5060841	-104.5832351	0.00	
5330.00†	13.668	52.942	5248.58	462.85	425.77	563.82	40.5061226	-104.5831668	0.00	
5430.00†	13.668	52.942	5345.75	478.34	440.01	582.68	40.5061612	-104.5830984	0.00	
5530.00†	13.668	52.942	5442.92	493.82	454.25	601.54	40.5061997	-104.5830301	0.00	
5630.00†	13.668	52.942	5540.09	509.30	468.49	620.40	40.5062383	-104.5829618	0.00	
5730.00†	13.668	52.942	5637.26	524.78	482.73	639.25	40.5062768	-104.5828934	0.00	
5830.00†	13.668	52.942	5734.42	540.26	496.97	658.11	40.5063154	-104.5828251	0.00	
5930.00†	13.668	52.942	5831.59	555.74	511.21	676.97	40.5063539	-104.5827568	0.00	
6030.00†	13.668	52.942	5928.76	571.22	525.45	695.83	40.5063925	-104.5826884	0.00	
6130.00†	13.668	52.942	6025.93	586.70	539.69	714.69	40.5064310	-104.5826201	0.00	
6230.00†	13.668	52.942	6123.09	602.18	553.94	733.54	40.5064696	-104.5825517	0.00	
6330.00†	13.668	52.942	6220.26	617.66	568.18	752.40	40.5065081	-104.5824834	0.00	
6430.00†	13.668	52.942	6317.43	633.14	582.42	771.26	40.5065467	-104.5824151	0.00	
6530.00†	13.668	52.942	6414.60	648.62	596.66	790.12	40.5065852	-104.5823467	0.00	
6552.84	13.668	52.942	6436.80	652.16	599.91	794.42	40.5065940	-104.5823311	0.00	KOP
6630.00†	18.572	34.962	6510.94	668.67	615.49	808.76	40.5066364	-104.5822790	9.00	
6730.00†	26.295	22.660	6603.35	703.35	649.05	826.45	40.5067280	-104.5822141	9.00	
6830.00†	34.609	15.799	6689.51	752.20	696.92	842.75	40.5068589	-104.5821537	9.00	
6930.00†	43.172	11.362	6767.29	814.03	757.91	857.25	40.5070259	-104.5820993	9.00	
7030.00†	51.859	8.160	6834.77	887.32	830.52	869.60	40.5072249	-104.5820522	9.00	
7130.00†	60.614	5.646	6890.30	970.25	912.97	879.49	40.5074509	-104.5820136	9.00	
7230.00†	69.409	3.534	6932.50	1060.79	1003.23	886.67	40.5076984	-104.5819844	9.00	
7330.00†	78.227	1.654	6960.35	1156.70	1099.07	890.98	40.5079614	-104.5819653	9.00	
7430.00†	87.056	359.892	6973.14	1255.63	1198.14	892.30	40.5082332	-104.5819569	9.00	
7463.34	90.000	359.315	6974.00†	1288.86	1231.46	892.07	40.5083247	-104.5819565	9.00	LP/TPZ
7530.00†	90.000	359.315	6974.00	1355.31	1298.12	891.27	40.5085077	-104.5819569	0.00	
7630.00†	90.000	359.315	6974.00	1455.00	1398.11	890.08	40.5087822	-104.5819574	0.00	
7730.00†	90.000	359.315	6974.00	1554.68	1498.10	888.88	40.5090566	-104.5819580	0.00	
7830.00†	90.000	359.315	6974.00	1654.36	1598.10	887.69	40.5093311	-104.5819586	0.00	
7930.00†	90.000	359.315	6974.00	1754.05	1698.09	886.49	40.5096056	-104.5819592	0.00	
8030.00†	90.000	359.315	6974.00	1853.73	1798.08	885.29	40.5098801	-104.5819597	0.00	
8130.00†	90.000	359.315	6974.00	1953.42	1898.08	884.10	40.5101546	-104.5819603	0.00	
8230.00†	90.000	359.315	6974.00	2053.10	1998.07	882.90	40.5104291	-104.5819609	0.00	
8330.00†	90.000	359.315	6974.00	2152.78	2098.06	881.71	40.5107035	-104.5819615	0.00	
8430.00†	90.000	359.315	6974.00	2252.47	2198.05	880.51	40.5109780	-104.5819620	0.00	



Planned Wellpath Report

BISHOP A05-783 (REV-A.0) PWP

Page 4 of 7



REFERENCE WELLPATH IDENTIFICATION

Operator	NOBLE ENERGY, INC	Well	BISHOP A05-783
Field	WELD COUNTY (NOBLE NAD 83 GRID)	API/Legal	
Facility	SEC.07-T06N-R64W	Wellbore	BISHOP A05-783 PWB
Slot	SLOT#25 BISHOP A05-783 (1011'FNL & 426'FEL,SEC.07)		

WELLPATH DATA (182 stations) † = interpolated, ‡ = extrapolated station

MD [ft]	Inclination [°]	Azimuth [°]	TVD [ft]	Vert Sect [ft]	North [ft]	East [ft]	Latitude	Longitude	DLS [°/100ft]	Comments
8530.00†	90.000	359.315	6974.00	2352.15	2298.05	879.32	40.5112525	-104.5819626	0.00	
8630.00†	90.000	359.315	6974.00	2451.84	2398.04	878.12	40.5115270	-104.5819632	0.00	
8730.00†	90.000	359.315	6974.00	2551.52	2498.03	876.92	40.5118015	-104.5819638	0.00	
8830.00†	90.000	359.315	6974.00	2651.21	2598.03	875.73	40.5120760	-104.5819644	0.00	
8930.00†	90.000	359.315	6974.00	2750.89	2698.02	874.53	40.5123504	-104.5819649	0.00	
9030.00†	90.000	359.315	6974.00	2850.57	2798.01	873.34	40.5126249	-104.5819655	0.00	
9130.00†	90.000	359.315	6974.00	2950.26	2898.00	872.14	40.5128994	-104.5819661	0.00	
9230.00†	90.000	359.315	6974.00	3049.94	2998.00	870.95	40.5131739	-104.5819667	0.00	
9330.00†	90.000	359.315	6974.00	3149.63	3097.99	869.75	40.5134484	-104.5819672	0.00	
9430.00†	90.000	359.315	6974.00	3249.31	3197.98	868.56	40.5137229	-104.5819678	0.00	
9530.00†	90.000	359.315	6974.00	3348.99	3297.98	867.36	40.5139973	-104.5819684	0.00	
9630.00†	90.000	359.315	6974.00	3448.68	3397.97	866.16	40.5142718	-104.5819690	0.00	
9730.00†	90.000	359.315	6974.00	3548.36	3497.96	864.97	40.5145463	-104.5819695	0.00	
9830.00†	90.000	359.315	6974.00	3648.05	3597.95	863.77	40.5148208	-104.5819701	0.00	
9930.00†	90.000	359.315	6974.00	3747.73	3697.95	862.58	40.5150953	-104.5819707	0.00	
10030.00†	90.000	359.315	6974.00	3847.42	3797.94	861.38	40.5153698	-104.5819713	0.00	
10130.00†	90.000	359.315	6974.00	3947.10	3897.93	860.19	40.5156443	-104.5819718	0.00	
10230.00†	90.000	359.315	6974.00	4046.78	3997.93	858.99	40.5159187	-104.5819724	0.00	
10330.00†	90.000	359.315	6974.00	4146.47	4097.92	857.80	40.5161932	-104.5819730	0.00	
10430.00†	90.000	359.315	6974.00	4246.15	4197.91	856.60	40.5164677	-104.5819736	0.00	
10530.00†	90.000	359.315	6974.00	4345.84	4297.90	855.40	40.5167422	-104.5819742	0.00	
10630.00†	90.000	359.315	6974.00	4445.52	4397.90	854.21	40.5170167	-104.5819747	0.00	
10730.00†	90.000	359.315	6974.00	4545.20	4497.89	853.01	40.5172912	-104.5819753	0.00	
10830.00†	90.000	359.315	6974.00	4644.89	4597.88	851.82	40.5175656	-104.5819759	0.00	
10930.00†	90.000	359.315	6974.00	4744.57	4697.88	850.62	40.5178401	-104.5819765	0.00	
11030.00†	90.000	359.315	6974.00	4844.26	4797.87	849.43	40.5181146	-104.5819770	0.00	
11130.00†	90.000	359.315	6974.00	4943.94	4897.86	848.23	40.5183891	-104.5819776	0.00	
11230.00†	90.000	359.315	6974.00	5043.63	4997.85	847.03	40.5186636	-104.5819782	0.00	
11330.00†	90.000	359.315	6974.00	5143.31	5097.85	845.84	40.5189381	-104.5819788	0.00	
11430.00†	90.000	359.315	6974.00	5242.99	5197.84	844.64	40.5192125	-104.5819793	0.00	
11530.00†	90.000	359.315	6974.00	5342.68	5297.83	843.45	40.5194870	-104.5819799	0.00	
11630.00†	90.000	359.315	6974.00	5442.36	5397.83	842.25	40.5197615	-104.5819805	0.00	
11730.00†	90.000	359.315	6974.00	5542.05	5497.82	841.06	40.5200360	-104.5819811	0.00	
11830.00†	90.000	359.315	6974.00	5641.73	5597.81	839.86	40.5203105	-104.5819817	0.00	
11930.00†	90.000	359.315	6974.00	5741.41	5697.80	838.67	40.5205850	-104.5819822	0.00	
12030.00†	90.000	359.315	6974.00	5841.10	5797.80	837.47	40.5208594	-104.5819828	0.00	
12130.00†	90.000	359.315	6974.00	5940.78	5897.79	836.27	40.5211339	-104.5819834	0.00	
12230.00†	90.000	359.315	6974.00	6040.47	5997.78	835.08	40.5214084	-104.5819840	0.00	
12330.00†	90.000	359.315	6974.00	6140.15	6097.78	833.88	40.5216829	-104.5819845	0.00	
12430.00†	90.000	359.315	6974.00	6239.84	6197.77	832.69	40.5219574	-104.5819851	0.00	
12530.00†	90.000	359.315	6974.00	6339.52	6297.76	831.49	40.5222319	-104.5819857	0.00	
12630.00†	90.000	359.315	6974.00	6439.20	6397.75	830.30	40.5225063	-104.5819863	0.00	
12730.00†	90.000	359.315	6974.00	6538.89	6497.75	829.10	40.5227808	-104.5819868	0.00	
12830.00†	90.000	359.315	6974.00	6638.57	6597.74	827.91	40.5230553	-104.5819874	0.00	
12930.00†	90.000	359.315	6974.00	6738.26	6697.73	826.71	40.5233298	-104.5819880	0.00	



Planned Wellpath Report

BISHOP A05-783 (REV-A.0) PWP
Page 5 of 7



REFERENCE WELLPATH IDENTIFICATION			
Operator	NOBLE ENERGY, INC	Well	BISHOP A05-783
Field	WELD COUNTY (NOBLE NAD 83 GRID)	API/Legal	
Facility	SEC.07-T06N-R64W	Wellbore	BISHOP A05-783 PWB
Slot	SLOT#25 BISHOP A05-783 (1011'FNL & 426'FEL,SEC.07)		

WELLPATH DATA (182 stations) † = interpolated, ‡ = extrapolated station										
MD [ft]	Inclination [°]	Azimuth [°]	TVD [ft]	Vert Sect [ft]	North [ft]	East [ft]	Latitude	Longitude	DLS [°/100ft]	Comments
13030.00†	90.000	359.315	6974.00	6837.94	6797.73	825.51	40.5236043	-104.5819886	0.00	
13130.00†	90.000	359.315	6974.00	6937.62	6897.72	824.32	40.5238788	-104.5819892	0.00	
13230.00†	90.000	359.315	6974.00	7037.31	6997.71	823.12	40.5241532	-104.5819897	0.00	
13330.00†	90.000	359.315	6974.00	7136.99	7097.70	821.93	40.5244277	-104.5819903	0.00	
13430.00†	90.000	359.315	6974.00	7236.68	7197.70	820.73	40.5247022	-104.5819909	0.00	
13530.00†	90.000	359.315	6974.00	7336.36	7297.69	819.54	40.5249767	-104.5819915	0.00	
13630.00†	90.000	359.315	6974.00	7436.05	7397.68	818.34	40.5252512	-104.5819920	0.00	
13730.00†	90.000	359.315	6974.00	7535.73	7497.68	817.14	40.5255257	-104.5819926	0.00	
13830.00†	90.000	359.315	6974.00	7635.41	7597.67	815.95	40.5258001	-104.5819932	0.00	
13930.00†	90.000	359.315	6974.00	7735.10	7697.66	814.75	40.5260746	-104.5819938	0.00	
14030.00†	90.000	359.315	6974.00	7834.78	7797.65	813.56	40.5263491	-104.5819943	0.00	
14130.00†	90.000	359.315	6974.00	7934.47	7897.65	812.36	40.5266236	-104.5819949	0.00	
14230.00†	90.000	359.315	6974.00	8034.15	7997.64	811.17	40.5268981	-104.5819955	0.00	
14330.00†	90.000	359.315	6974.00	8133.83	8097.63	809.97	40.5271726	-104.5819961	0.00	
14430.00†	90.000	359.315	6974.00	8233.52	8197.63	808.78	40.5274470	-104.5819967	0.00	
14530.00†	90.000	359.315	6974.00	8333.20	8297.62	807.58	40.5277215	-104.5819972	0.00	
14630.00†	90.000	359.315	6974.00	8432.89	8397.61	806.38	40.5279960	-104.5819978	0.00	
14730.00†	90.000	359.315	6974.00	8532.57	8497.60	805.19	40.5282705	-104.5819984	0.00	
14830.00†	90.000	359.315	6974.00	8632.26	8597.60	803.99	40.5285450	-104.5819990	0.00	
14930.00†	90.000	359.315	6974.00	8731.94	8697.59	802.80	40.5288195	-104.5819995	0.00	
15030.00†	90.000	359.315	6974.00	8831.62	8797.58	801.60	40.5290939	-104.5820001	0.00	
15130.00†	90.000	359.315	6974.00	8931.31	8897.58	800.41	40.5293684	-104.5820007	0.00	
15230.00†	90.000	359.315	6974.00	9030.99	8997.57	799.21	40.5296429	-104.5820013	0.00	
15330.00†	90.000	359.315	6974.00	9130.68	9097.56	798.02	40.5299174	-104.5820018	0.00	
15430.00†	90.000	359.315	6974.00	9230.36	9197.55	796.82	40.5301919	-104.5820024	0.00	
15530.00†	90.000	359.315	6974.00	9330.04	9297.55	795.62	40.5304664	-104.5820030	0.00	
15630.00†	90.000	359.315	6974.00	9429.73	9397.54	794.43	40.5307408	-104.5820036	0.00	
15730.00†	90.000	359.315	6974.00	9529.41	9497.53	793.23	40.5310153	-104.5820042	0.00	
15830.00†	90.000	359.315	6974.00	9629.10	9597.53	792.04	40.5312898	-104.5820047	0.00	
15930.00†	90.000	359.315	6974.00	9728.78	9697.52	790.84	40.5315643	-104.5820053	0.00	
16030.00†	90.000	359.315	6974.00	9828.47	9797.51	789.65	40.5318388	-104.5820059	0.00	
16130.00†	90.000	359.315	6974.00	9928.15	9897.50	788.45	40.5321132	-104.5820065	0.00	
16230.00†	90.000	359.315	6974.00	10027.83	9997.50	787.25	40.5323877	-104.5820070	0.00	
16330.00†	90.000	359.315	6974.00	10127.52	10097.49	786.06	40.5326622	-104.5820076	0.00	
16430.00†	90.000	359.315	6974.00	10227.20	10197.48	784.86	40.5329367	-104.5820082	0.00	
16530.00†	90.000	359.315	6974.00	10326.89	10297.48	783.67	40.5332112	-104.5820088	0.00	
16630.00†	90.000	359.315	6974.00	10426.57	10397.47	782.47	40.5334857	-104.5820093	0.00	
16730.00†	90.000	359.315	6974.00	10526.25	10497.46	781.28	40.5337601	-104.5820099	0.00	
16830.00†	90.000	359.315	6974.00	10625.94	10597.45	780.08	40.5340346	-104.5820105	0.00	
16930.00†	90.000	359.315	6974.00	10725.62	10697.45	778.89	40.5343091	-104.5820111	0.00	
17030.00†	90.000	359.315	6974.00	10825.31	10797.44	777.69	40.5345836	-104.5820117	0.00	
17130.00†	90.000	359.315	6974.00	10924.99	10897.43	776.49	40.5348581	-104.5820122	0.00	
17230.00†	90.000	359.315	6974.00	11024.68	10997.43	775.30	40.5351326	-104.5820128	0.00	
17330.00†	90.000	359.315	6974.00	11124.36	11097.42	774.10	40.5354070	-104.5820134	0.00	
17430.00†	90.000	359.315	6974.00	11224.04	11197.41	772.91	40.5356815	-104.5820140	0.00	

REFERENCE WELLPATH IDENTIFICATION			
Operator	NOBLE ENERGY, INC	Well	BISHOP A05-783
Field	WELD COUNTY (NOBLE NAD 83 GRID)	API/Legal	
Facility	SEC.07-T06N-R64W	Wellbore	BISHOP A05-783 PWB
Slot	SLOT#25 BISHOP A05-783 (1011'FNL & 426'FEL,SEC.07)		

WELLPATH DATA (182 stations) † = interpolated, ‡ = extrapolated station										
MD [ft]	Inclination [°]	Azimuth [°]	TVD [ft]	Vert Sect [ft]	North [ft]	East [ft]	Latitude	Longitude	DLS [°/100ft]	Comments
17530.00†	90.000	359.315	6974.00	11323.73	11297.40	771.71	40.5359560	-104.5820145	0.00	
17624.29	90.000	359.315	6974.00‡	11417.72	11391.68	770.58	40.5362148	-104.5820151	0.00	BHL

HOLE & CASING SECTIONS - Ref Wellbore: BISHOP A05-783 PWB Ref Wellpath: BISHOP A05-783 (REV-A.0) PWP									
String/Diameter	Start MD [ft]	End MD [ft]	Interval [ft]	Start TVD [ft]	End TVD [ft]	Start N/S [ft]	Start E/W [ft]	End N/S [ft]	End E/W [ft]
9.625in Casing Surface	30.00	1950.00	1920.00	30.00	1950.00	0.00	0.00	0.00	0.00

TARGETS									
Name	MD [ft]	TVD [ft]	North [ft]	East [ft]	Grid East [US ft]	Grid North [US ft]	Latitude	Longitude	Shape
OGDP 1 SEC.07-T06N-R64W	N/A	2.00	149.39	1.24	3254380.72	1428262.61	40.5053800	-104.5852000	polygon
2D Polygon: dimensions not calculated									
OGDP 1 SEC.08-T06N-R64W	N/A	2.00	149.39	1.24	3254380.72	1428262.61	40.5053800	-104.5852000	polygon
2D Polygon: dimensions not calculated									
OGDP1 SEC.05-T06N-R64W	N/A	20.00	167.83	-4251.12	3250128.51	1428281.04	40.5055500	-104.6004900	polygon
2D Polygon: dimensions not calculated									
OGDP1 SEC.32-T07N-R64W	N/A	20.00	167.83	-4251.12	3250128.51	1428281.04	40.5055500	-104.6004900	polygon
2D Polygon: dimensions not calculated									
2) BISHOP A05-783 BHL Rev-1 (200'FSL & 381'FWL,SEC.32)	17624.29	6974.00	11391.68	770.58	3255150.03	1439504.51	40.5362148	-104.5820151	point
1) BISHOP A05-783 LP Rev-1 (200'FSL & 476'FWL,SEC.05)	7463.34	6974.00	1231.46	892.07	3255271.51	1429344.64	40.5083247	-104.5819565	point

SURVEY PROGRAM - Ref Wellbore: BISHOP A05-783 PWB Ref Wellpath: BISHOP A05-783 (REV-A.0) PWP				
Start MD [ft]	End MD [ft]	Positional Uncertainty Model	Log Name/Comment	Wellbore
30.00	17624.29	OWSG MWD rev2 (MS+IFR1)		BISHOP A05-783 PWB



Planned Wellpath Report

BISHOP A05-783 (REV-A.0) PWP

Page 7 of 7



REFERENCE WELLPATH IDENTIFICATION			
Operator	NOBLE ENERGY, INC	Well	BISHOP A05-783
Field	WELD COUNTY (NOBLE NAD 83 GRID)	API/Legal	
Facility	SEC.07-T06N-R64W	Wellbore	BISHOP A05-783 PWB
Slot	SLOT#25 BISHOP A05-783 (1011'FNL & 426'FEL,SEC.07)		

DESIGN COMMENTS				
MD [ft]	Inclination [°]	Azimuth [°]	TVD [ft]	Comment
30.00	0.000	52.942	30.00	SHL
2000.00	0.000	52.942	2000.00	End of Tangent
2683.42	13.668	52.942	2676.96	Build (XS)
6552.84	13.668	52.942	6436.80	KOP
7463.34	90.000	359.315	6974.00	LP/TPZ
17624.29	90.000	359.315	6974.00	BHL