

NOBLE ENERGY, INC

Location: COLORADO Slot: SLOT#24 BISHOP A06-712 (1010°FNL & 463°FEL,SEC.07)

Field: WELD COUNTY (NOBLE NAD 83 GRID) Well: BISHOP A06-712

Facility: SEC.07-T06N-R64W Wellbore: BISHOP A06-712 PWB

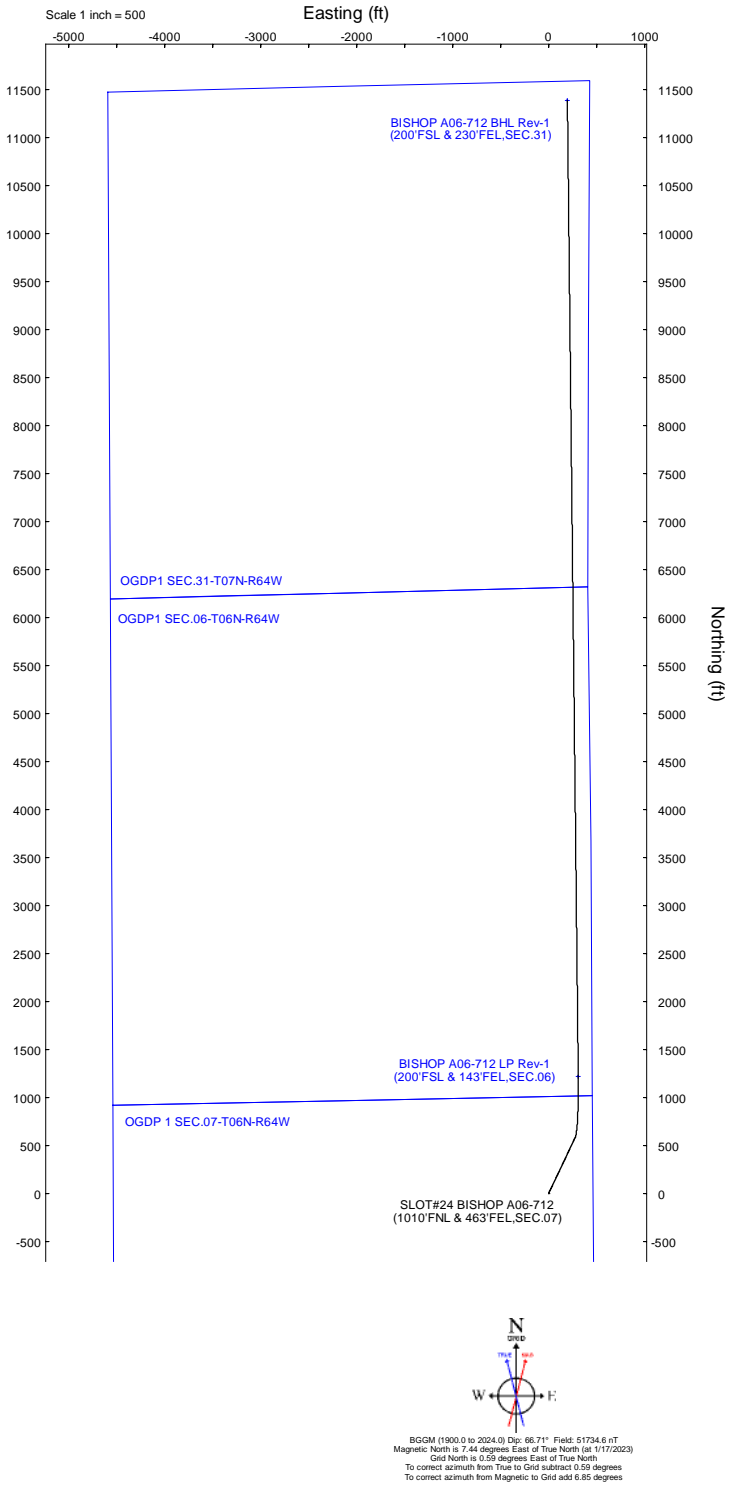
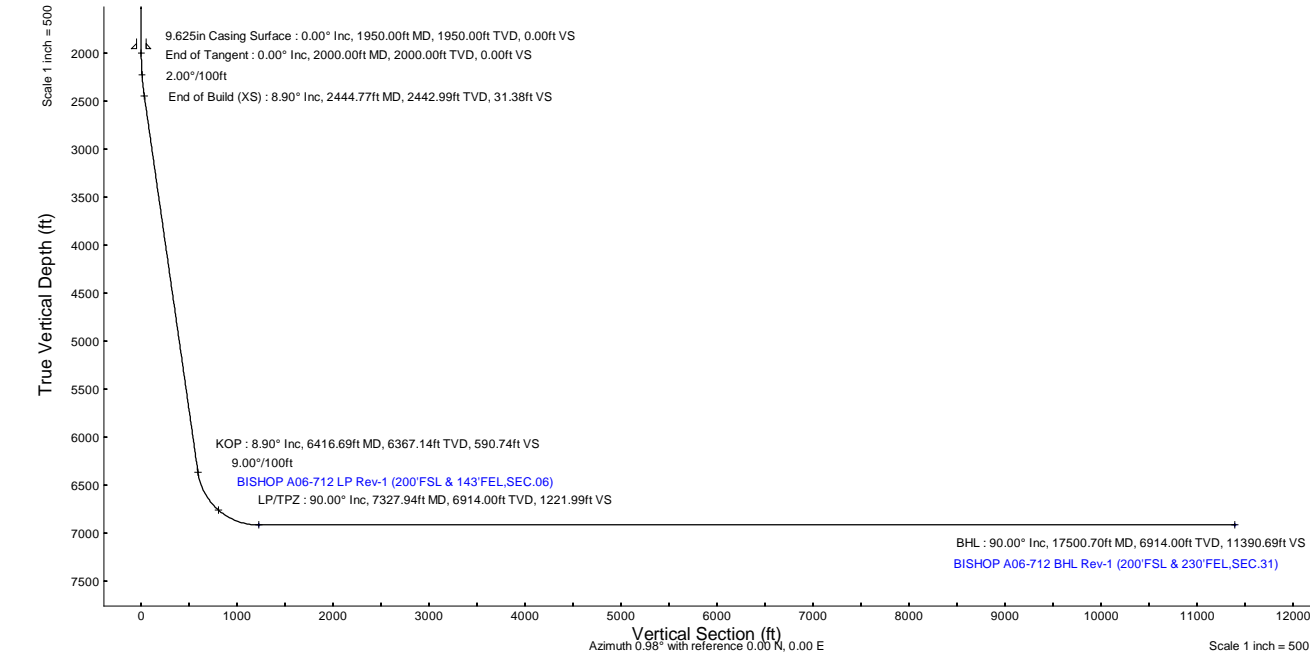
Plot reference wellpath is BISHOP A06-712 (REV-A.0) PWP		Grid System: NAD83 / Lambert Colorado SP, Northern Zone (501), US feet
True vertical depths are referenced to (4744GL+30KB@4774RKB) (RKB)		North Reference: Grid north
Reference wellpath measured depths are referenced to (4744GL+30KB@4774RKB) (RKB)		Scale: True distance
(4744GL+30KB@4774RKB) (RKB) to Mean Sea Level: 4774 feet		Coordinates are in feet referenced to Slot
Mean Sea Level to Ground level (At Slot: SLOT#24 BISHOP A06-712 (1010°FNL & 463°FEL,SEC.07): 0 feet		Depths are in feet
Offset wellpath MDs are referenced to each path's default MD datum		Created by: guemaler on 2023-01-17; Database: WA_Denver

Location Information					
Facility Name			Grid East (US ft)	Grid North (US ft)	Latitude
SEC.07-T06N-R64W			3254380.716	1428262.611	40°30'19.3680"N
Slot			Local N (ft)	Local E (ft)	Latitude
SLOT#24 BISHOP A06-712 (1010°FNL & 463°FEL,SEC.07)			-149.76	-37.39	40°30'17.8920"N
(4744GL+30KB@4774RKB) (RKB) to Ground level (At Slot: SLOT#24 BISHOP A06-712 (1010°FNL & 463°FEL,SEC.07))					4774ft
Mean Sea Level to Ground level (At Slot: SLOT#24 BISHOP A06-712 (1010°FNL & 463°FEL,SEC.07))					0ft
(4744GL+30KB@4774RKB) (RKB) to Mean Sea Level					4774ft

Well Profile Data							
Design Comment	MD (ft)	Inc (")	Az (°)	TVD (ft)	Local N (ft)	Local E (ft)	DLS (°/100ft)
SHL	30.00	0.000	25.378	30.00	0.00	0.00	0.00
End of Tangent	2000.00	0.000	25.378	2000.00	0.00	0.00	0.00
End of Build (XS)	2444.77	8.895	25.378	2442.99	31.13	14.77	2.00
KOP	6416.69	8.895	25.378	6367.14	586.05	278.00	0.00
LP/TPZ	7327.94	90.000	359.364	6914.00	1216.87	308.53	9.00
BHL	17500.70	90.000	359.364	6914.00	11389.01	195.54	0.00

Targets							
Name	MD (ft)	TVD (ft)	Local N (ft)	Local E (ft)	Grid East (US ft)	Grid North (US ft)	Latitude
OGDP 1 SEC.07-T06N-R64W	N/A	2.00	149.76	37.39	3254380.72	1428262.61	40°30'19.3680"N
OGDP1 SEC.06-T06N-R64W	N/A	20.00	168.20	-4214.97	3250128.51	1428281.04	40°30'19.9800"N
OGDP1 SEC.31-T07N-R64W	N/A	20.00	168.20	-4214.97	3250128.51	1428281.04	40°30'19.9800"N
BISHOP A06-712 BHL Rev-1 (200°FSL & 230°FEL,SEC.31)	17500.70	6914.00	11389.01	195.54	3254538.86	1439501.46	40°32'10.4056"N
BISHOP A06-712 LP Rev-1 (200°FSL & 143°FEL,SEC.06)	7327.94	6914.00	1216.87	308.53	3254651.85	1429329.68	40°30'29.8844"N

Survey Program					
Start MD (ft)	End MD (ft)	Tool	Model	Log Name/Comment	Wellbore
30.00	17500.70	OWSG MWD rev2	OWSG MWD rev2 (MS+IFR1)		BISHOP A06-712 PWB





Planned Wellpath Report
BISHOP A06-712 (REV-A.0) PWP
Page 1 of 7



REFERENCE WELLPATH IDENTIFICATION			
Operator	NOBLE ENERGY, INC	Well	BISHOP A06-712
Field	WELD COUNTY (NOBLE NAD 83 GRID)	API/Legal	
Facility	SEC.07-T06N-R64W	Wellbore	BISHOP A06-712 PWB
Slot	SLOT#24 BISHOP A06-712 (1010'FNL & 463'FEL,SEC.07)		

REPORT SETUP INFORMATION			
Projection System	NAD83 / Lambert Colorado SP, Northern Zone (501), US feet	Software System	WellArchitect® 6.0
North Reference	Grid	User	Guenaler
Scale	0.999967	Report Generated	1/17/2023 at 11:21:10 AM
Convergence at slot	0.59° East	Database	WA_Denver

WELLPATH LOCATION						
	Local coordinates		Grid coordinates		Geographic coordinates	
	North[ft]	East[ft]	Easting[US ft]	Northing[US ft]	Latitude	Longitude
Slot Location	-149.76	-37.39	3254343.33	1428112.85	40.5049700°	-104.5853400°
Facility Reference Pt			3254380.72	1428262.61	40.5053800°	-104.5852000°
Field Reference Pt			3000000.00	4454105.15	48.7761986°	-105.5000000°

WELLPATH DATUM			
Calculation method	Minimum curvature	(4744'GL+30'KB@4774'RKB) (RKB) to Facility Vertical Datum	4774.00ft
Horizontal Reference Pt	Slot	(4744'GL+30'KB@4774'RKB) (RKB) to Mean Sea Level	4774.00ft
Vertical Reference Pt	(4744'GL+30'KB@4774'RKB) (RKB)	(4744'GL+30'KB@4774'RKB) (RKB) to Ground Level at Slot (SLOT#24 BISHOP A06-712 (1010'FNL & 463'FEL,SEC.07))	4774.00ft
MD Reference Pt	(4744'GL+30'KB@4774'RKB) (RKB)	Section Origin	N 0.00, E 0.00 ft
Field Vertical Reference	Mean Sea Level	Section Azimuth	0.98°



Planned Wellpath Report
BISHOP A06-712 (REV-A.0) PWP
Page 2 of 7



REFERENCE WELLPATH IDENTIFICATION			
Operator	NOBLE ENERGY, INC	Well	BISHOP A06-712
Field	WELD COUNTY (NOBLE NAD 83 GRID)	API/Legal	
Facility	SEC.07-T06N-R64W	Wellbore	BISHOP A06-712 PWB
Slot	SLOT#24 BISHOP A06-712 (1010'FNL & 463'FEL,SEC.07)		

WELLPATH DATA (181 stations) † = interpolated, ‡ = extrapolated station										
MD [ft]	Inclination [°]	Azimuth [°]	TVD [ft]	Vert Sect [ft]	North [ft]	East [ft]	Latitude	Longitude	DLS [°/100ft]	Comments
0.00†	0.000	25.378	0.00	0.00	0.00	0.00	40.5049700	-104.5853400	0.00	
30.00	0.000	25.378	30.00	0.00	0.00	0.00	40.5049700	-104.5853400	0.00	SHL
130.00†	0.000	25.378	130.00	0.00	0.00	0.00	40.5049700	-104.5853400	0.00	
230.00†	0.000	25.378	230.00	0.00	0.00	0.00	40.5049700	-104.5853400	0.00	
330.00†	0.000	25.378	330.00	0.00	0.00	0.00	40.5049700	-104.5853400	0.00	
430.00†	0.000	25.378	430.00	0.00	0.00	0.00	40.5049700	-104.5853400	0.00	
530.00†	0.000	25.378	530.00	0.00	0.00	0.00	40.5049700	-104.5853400	0.00	
630.00†	0.000	25.378	630.00	0.00	0.00	0.00	40.5049700	-104.5853400	0.00	
730.00†	0.000	25.378	730.00	0.00	0.00	0.00	40.5049700	-104.5853400	0.00	
830.00†	0.000	25.378	830.00	0.00	0.00	0.00	40.5049700	-104.5853400	0.00	
930.00†	0.000	25.378	930.00	0.00	0.00	0.00	40.5049700	-104.5853400	0.00	
1030.00†	0.000	25.378	1030.00	0.00	0.00	0.00	40.5049700	-104.5853400	0.00	
1130.00†	0.000	25.378	1130.00	0.00	0.00	0.00	40.5049700	-104.5853400	0.00	
1230.00†	0.000	25.378	1230.00	0.00	0.00	0.00	40.5049700	-104.5853400	0.00	
1330.00†	0.000	25.378	1330.00	0.00	0.00	0.00	40.5049700	-104.5853400	0.00	
1430.00†	0.000	25.378	1430.00	0.00	0.00	0.00	40.5049700	-104.5853400	0.00	
1530.00†	0.000	25.378	1530.00	0.00	0.00	0.00	40.5049700	-104.5853400	0.00	
1630.00†	0.000	25.378	1630.00	0.00	0.00	0.00	40.5049700	-104.5853400	0.00	
1730.00†	0.000	25.378	1730.00	0.00	0.00	0.00	40.5049700	-104.5853400	0.00	
1830.00†	0.000	25.378	1830.00	0.00	0.00	0.00	40.5049700	-104.5853400	0.00	
1930.00†	0.000	25.378	1930.00	0.00	0.00	0.00	40.5049700	-104.5853400	0.00	
2000.00	0.000	25.378	2000.00	0.00	0.00	0.00	40.5049700	-104.5853400	0.00	End of Tangent
2030.00†	0.600	25.378	2030.00	0.14	0.14	0.07	40.5049704	-104.5853398	2.00	
2130.00†	2.600	25.378	2129.96	2.69	2.66	1.26	40.5049773	-104.5853354	2.00	
2230.00†	4.600	25.378	2229.75	8.40	8.34	3.95	40.5049928	-104.5853255	2.00	
2330.00†	6.600	25.378	2329.27	17.29	17.15	8.14	40.5050169	-104.5853101	2.00	
2430.00†	8.600	25.378	2428.39	29.34	29.10	13.80	40.5050495	-104.5852893	2.00	
2444.77	8.895	25.378	2442.99	31.38	31.13	14.77	40.5050550	-104.5852857	2.00	End of Build (XS)
2530.00†	8.895	25.378	2527.19	43.38	43.04	20.42	40.5050876	-104.5852650	0.00	
2630.00†	8.895	25.378	2625.99	57.47	57.01	27.04	40.5051257	-104.5852406	0.00	
2730.00†	8.895	25.378	2724.78	71.55	70.98	33.67	40.5051639	-104.5852163	0.00	
2830.00†	8.895	25.378	2823.58	85.63	84.95	40.30	40.5052020	-104.5851919	0.00	
2930.00†	8.895	25.378	2922.38	99.71	98.92	46.93	40.5052402	-104.5851676	0.00	
3030.00†	8.895	25.378	3021.18	113.80	112.89	53.55	40.5052783	-104.5851432	0.00	
3130.00†	8.895	25.378	3119.97	127.88	126.87	60.18	40.5053165	-104.5851189	0.00	
3230.00†	8.895	25.378	3218.77	141.96	140.84	66.81	40.5053547	-104.5850946	0.00	
3330.00†	8.895	25.378	3317.57	156.05	154.81	73.43	40.5053928	-104.5850702	0.00	
3430.00†	8.895	25.378	3416.37	170.13	168.78	80.06	40.5054310	-104.5850459	0.00	
3530.00†	8.895	25.378	3515.16	184.21	182.75	86.69	40.5054691	-104.5850215	0.00	
3630.00†	8.895	25.378	3613.96	198.29	196.72	93.32	40.5055073	-104.5849972	0.00	
3730.00†	8.895	25.378	3712.76	212.38	210.69	99.94	40.5055455	-104.5849728	0.00	
3830.00†	8.895	25.378	3811.55	226.46	224.66	106.57	40.5055836	-104.5849485	0.00	
3930.00†	8.895	25.378	3910.35	240.54	238.63	113.20	40.5056218	-104.5849241	0.00	
4030.00†	8.895	25.378	4009.15	254.63	252.61	119.83	40.5056599	-104.5848998	0.00	
4130.00†	8.895	25.378	4107.95	268.71	266.58	126.45	40.5056981	-104.5848754	0.00	



Planned Wellpath Report
BISHOP A06-712 (REV-A.0) PWP
Page 3 of 7



REFERENCE WELLPATH IDENTIFICATION			
Operator	NOBLE ENERGY, INC	Well	BISHOP A06-712
Field	WELD COUNTY (NOBLE NAD 83 GRID)	API/Legal	
Facility	SEC.07-T06N-R64W	Wellbore	BISHOP A06-712 PWB
Slot	SLOT#24 BISHOP A06-712 (1010'FNL & 463'FEL,SEC.07)		

WELLPATH DATA (181 stations) † = interpolated, ‡ = extrapolated station										
MD [ft]	Inclination [°]	Azimuth [°]	TVD [ft]	Vert Sect [ft]	North [ft]	East [ft]	Latitude	Longitude	DLS [°/100ft]	Comments
4230.00†	8.895	25.378	4206.74	282.79	280.55	133.08	40.5057363	-104.5848511	0.00	
4330.00†	8.895	25.378	4305.54	296.87	294.52	139.71	40.5057744	-104.5848267	0.00	
4430.00†	8.895	25.378	4404.34	310.96	308.49	146.33	40.5058126	-104.5848024	0.00	
4530.00†	8.895	25.378	4503.13	325.04	322.46	152.96	40.5058507	-104.5847780	0.00	
4630.00†	8.895	25.378	4601.93	339.12	336.43	159.59	40.5058889	-104.5847537	0.00	
4730.00†	8.895	25.378	4700.73	353.21	350.40	166.22	40.5059270	-104.5847293	0.00	
4830.00†	8.895	25.378	4799.53	367.29	364.37	172.84	40.5059652	-104.5847050	0.00	
4930.00†	8.895	25.378	4898.32	381.37	378.35	179.47	40.5060034	-104.5846806	0.00	
5030.00†	8.895	25.378	4997.12	395.45	392.32	186.10	40.5060415	-104.5846563	0.00	
5130.00†	8.895	25.378	5095.92	409.54	406.29	192.73	40.5060797	-104.5846319	0.00	
5230.00†	8.895	25.378	5194.71	423.62	420.26	199.35	40.5061178	-104.5846076	0.00	
5330.00†	8.895	25.378	5293.51	437.70	434.23	205.98	40.5061560	-104.5845832	0.00	
5430.00†	8.895	25.378	5392.31	451.78	448.20	212.61	40.5061942	-104.5845589	0.00	
5530.00†	8.895	25.378	5491.11	465.87	462.17	219.24	40.5062323	-104.5845345	0.00	
5630.00†	8.895	25.378	5589.90	479.95	476.14	225.86	40.5062705	-104.5845102	0.00	
5730.00†	8.895	25.378	5688.70	494.03	490.11	232.49	40.5063086	-104.5844858	0.00	
5830.00†	8.895	25.378	5787.50	508.12	504.09	239.12	40.5063468	-104.5844615	0.00	
5930.00†	8.895	25.378	5886.30	522.20	518.06	245.74	40.5063849	-104.5844371	0.00	
6030.00†	8.895	25.378	5985.09	536.28	532.03	252.37	40.5064231	-104.5844128	0.00	
6130.00†	8.895	25.378	6083.89	550.36	546.00	259.00	40.5064613	-104.5843884	0.00	
6230.00†	8.895	25.378	6182.69	564.45	559.97	265.63	40.5064994	-104.5843641	0.00	
6330.00†	8.895	25.378	6281.48	578.53	573.94	272.25	40.5065376	-104.5843397	0.00	
6416.69	8.895	25.378	6367.14	590.74	586.05	278.00	40.5065707	-104.5843186	0.00	KOP
6430.00†	9.983	22.317	6380.26	592.75	588.05	278.88	40.5065761	-104.5843154	9.00	
6530.00†	18.591	11.140	6477.09	616.56	611.76	285.26	40.5066410	-104.5842915	9.00	
6630.00†	27.446	6.959	6569.05	655.25	650.35	291.15	40.5067468	-104.5842690	9.00	
6730.00†	36.369	4.712	6653.85	707.87	702.89	296.39	40.5068908	-104.5842482	9.00	
6830.00†	45.319	3.256	6729.43	773.11	768.06	300.85	40.5070696	-104.5842297	9.00	
6930.00†	54.283	2.193	6793.91	849.38	844.28	304.43	40.5072787	-104.5842140	9.00	
7030.00†	63.253	1.346	6845.71	934.79	929.66	307.04	40.5075129	-104.5842014	9.00	
7130.00†	72.229	0.624	6883.55	1027.24	1022.10	308.61	40.5077666	-104.5841924	9.00	
7230.00†	81.206	359.972	6906.50	1124.46	1119.32	309.10	40.5080334	-104.5841870	9.00	
7327.94	90.000	359.364	6914.00†	1221.99	1216.87	308.53	40.5083012	-104.5841854	9.00	LP/TPZ
7330.00†	90.000	359.364	6914.00	1224.05	1218.93	308.51	40.5083069	-104.5841854	0.00	
7430.00†	90.000	359.364	6914.00	1324.01	1318.93	307.40	40.5085814	-104.5841857	0.00	
7530.00†	90.000	359.364	6914.00	1423.97	1418.92	306.29	40.5088558	-104.5841860	0.00	
7630.00†	90.000	359.364	6914.00	1523.93	1518.92	305.18	40.5091303	-104.5841862	0.00	
7730.00†	90.000	359.364	6914.00	1623.89	1618.91	304.07	40.5094048	-104.5841865	0.00	
7830.00†	90.000	359.364	6914.00	1723.85	1718.90	302.96	40.5096793	-104.5841868	0.00	
7930.00†	90.000	359.364	6914.00	1823.81	1818.90	301.85	40.5099538	-104.5841871	0.00	
8030.00†	90.000	359.364	6914.00	1923.77	1918.89	300.74	40.5102283	-104.5841874	0.00	
8130.00†	90.000	359.364	6914.00	2023.73	2018.89	299.63	40.5105027	-104.5841876	0.00	
8230.00†	90.000	359.364	6914.00	2123.69	2118.88	298.52	40.5107772	-104.5841879	0.00	
8330.00†	90.000	359.364	6914.00	2223.65	2218.87	297.40	40.5110517	-104.5841882	0.00	
8430.00†	90.000	359.364	6914.00	2323.61	2318.87	296.29	40.5113262	-104.5841885	0.00	



Planned Wellpath Report
BISHOP A06-712 (REV-A.0) PWP
Page 4 of 7



REFERENCE WELLPATH IDENTIFICATION			
Operator	NOBLE ENERGY, INC	Well	BISHOP A06-712
Field	WELD COUNTY (NOBLE NAD 83 GRID)	API/Legal	
Facility	SEC.07-T06N-R64W	Wellbore	BISHOP A06-712 PWB
Slot	SLOT#24 BISHOP A06-712 (1010'FNL & 463'FEL,SEC.07)		

WELLPATH DATA (181 stations) † = interpolated, ‡ = extrapolated station										
MD [ft]	Inclination [°]	Azimuth [°]	TVD [ft]	Vert Sect [ft]	North [ft]	East [ft]	Latitude	Longitude	DLS [°/100ft]	Comments
8530.00†	90.000	359.364	6914.00	2423.57	2418.86	295.18	40.5116007	-104.5841888	0.00	
8630.00†	90.000	359.364	6914.00	2523.53	2518.85	294.07	40.5118752	-104.5841890	0.00	
8730.00†	90.000	359.364	6914.00	2623.49	2618.85	292.96	40.5121497	-104.5841893	0.00	
8830.00†	90.000	359.364	6914.00	2723.45	2718.84	291.85	40.5124241	-104.5841896	0.00	
8930.00†	90.000	359.364	6914.00	2823.41	2818.84	290.74	40.5126986	-104.5841899	0.00	
9030.00†	90.000	359.364	6914.00	2923.37	2918.83	289.63	40.5129731	-104.5841902	0.00	
9130.00†	90.000	359.364	6914.00	3023.33	3018.82	288.52	40.5132476	-104.5841904	0.00	
9230.00†	90.000	359.364	6914.00	3123.29	3118.82	287.41	40.5135221	-104.5841907	0.00	
9330.00†	90.000	359.364	6914.00	3223.25	3218.81	286.30	40.5137966	-104.5841910	0.00	
9430.00†	90.000	359.364	6914.00	3323.21	3318.81	285.19	40.5140710	-104.5841913	0.00	
9530.00†	90.000	359.364	6914.00	3423.17	3418.80	284.08	40.5143455	-104.5841916	0.00	
9630.00†	90.000	359.364	6914.00	3523.13	3518.79	282.96	40.5146200	-104.5841918	0.00	
9730.00†	90.000	359.364	6914.00	3623.09	3618.79	281.85	40.5148945	-104.5841921	0.00	
9830.00†	90.000	359.364	6914.00	3723.05	3718.78	280.74	40.5151690	-104.5841924	0.00	
9930.00†	90.000	359.364	6914.00	3823.01	3818.77	279.63	40.5154435	-104.5841927	0.00	
10030.00†	90.000	359.364	6914.00	3922.97	3918.77	278.52	40.5157180	-104.5841930	0.00	
10130.00†	90.000	359.364	6914.00	4022.93	4018.76	277.41	40.5159924	-104.5841932	0.00	
10230.00†	90.000	359.364	6914.00	4122.89	4118.76	276.30	40.5162669	-104.5841935	0.00	
10330.00†	90.000	359.364	6914.00	4222.85	4218.75	275.19	40.5165414	-104.5841938	0.00	
10430.00†	90.000	359.364	6914.00	4322.81	4318.74	274.08	40.5168159	-104.5841941	0.00	
10530.00†	90.000	359.364	6914.00	4422.77	4418.74	272.97	40.5170904	-104.5841944	0.00	
10630.00†	90.000	359.364	6914.00	4522.73	4518.73	271.86	40.5173649	-104.5841946	0.00	
10730.00†	90.000	359.364	6914.00	4622.69	4618.73	270.75	40.5176393	-104.5841949	0.00	
10830.00†	90.000	359.364	6914.00	4722.65	4718.72	269.64	40.5179138	-104.5841952	0.00	
10930.00†	90.000	359.364	6914.00	4822.61	4818.71	268.53	40.5181883	-104.5841955	0.00	
11030.00†	90.000	359.364	6914.00	4922.57	4918.71	267.41	40.5184628	-104.5841958	0.00	
11130.00†	90.000	359.364	6914.00	5022.53	5018.70	266.30	40.5187373	-104.5841960	0.00	
11230.00†	90.000	359.364	6914.00	5122.49	5118.69	265.19	40.5190118	-104.5841963	0.00	
11330.00†	90.000	359.364	6914.00	5222.45	5218.69	264.08	40.5192862	-104.5841966	0.00	
11430.00†	90.000	359.364	6914.00	5322.41	5318.68	262.97	40.5195607	-104.5841969	0.00	
11530.00†	90.000	359.364	6914.00	5422.37	5418.68	261.86	40.5198352	-104.5841972	0.00	
11630.00†	90.000	359.364	6914.00	5522.33	5518.67	260.75	40.5201097	-104.5841975	0.00	
11730.00†	90.000	359.364	6914.00	5622.29	5618.66	259.64	40.5203842	-104.5841977	0.00	
11830.00†	90.000	359.364	6914.00	5722.25	5718.66	258.53	40.5206587	-104.5841980	0.00	
11930.00†	90.000	359.364	6914.00	5822.21	5818.65	257.42	40.5209331	-104.5841983	0.00	
12030.00†	90.000	359.364	6914.00	5922.17	5918.64	256.31	40.5212076	-104.5841986	0.00	
12130.00†	90.000	359.364	6914.00	6022.13	6018.64	255.20	40.5214821	-104.5841989	0.00	
12230.00†	90.000	359.364	6914.00	6122.09	6118.63	254.09	40.5217566	-104.5841991	0.00	
12330.00†	90.000	359.364	6914.00	6222.05	6218.63	252.97	40.5220311	-104.5841994	0.00	
12430.00†	90.000	359.364	6914.00	6322.01	6318.62	251.86	40.5223056	-104.5841997	0.00	
12530.00†	90.000	359.364	6914.00	6421.97	6418.61	250.75	40.5225800	-104.5842000	0.00	
12630.00†	90.000	359.364	6914.00	6521.93	6518.61	249.64	40.5228545	-104.5842003	0.00	
12730.00†	90.000	359.364	6914.00	6621.89	6618.60	248.53	40.5231290	-104.5842005	0.00	
12830.00†	90.000	359.364	6914.00	6721.85	6718.60	247.42	40.5234035	-104.5842008	0.00	
12930.00†	90.000	359.364	6914.00	6821.81	6818.59	246.31	40.5236780	-104.5842011	0.00	



Planned Wellpath Report
BISHOP A06-712 (REV-A.0) PWP
Page 5 of 7



REFERENCE WELLPATH IDENTIFICATION			
Operator	NOBLE ENERGY, INC	Well	BISHOP A06-712
Field	WELD COUNTY (NOBLE NAD 83 GRID)	API/Legal	
Facility	SEC.07-T06N-R64W	Wellbore	BISHOP A06-712 PWB
Slot	SLOT#24 BISHOP A06-712 (1010'FNL & 463'FEL,SEC.07)		

WELLPATH DATA (181 stations) † = interpolated, ‡ = extrapolated station										
MD [ft]	Inclination [°]	Azimuth [°]	TVD [ft]	Vert Sect [ft]	North [ft]	East [ft]	Latitude	Longitude	DLS [°/100ft]	Comments
13030.00†	90.000	359.364	6914.00	6921.77	6918.58	245.20	40.5239525	-104.5842014	0.00	
13130.00†	90.000	359.364	6914.00	7021.73	7018.58	244.09	40.5242269	-104.5842017	0.00	
13230.00†	90.000	359.364	6914.00	7121.69	7118.57	242.98	40.5245014	-104.5842019	0.00	
13330.00†	90.000	359.364	6914.00	7221.65	7218.56	241.87	40.5247759	-104.5842022	0.00	
13430.00†	90.000	359.364	6914.00	7321.61	7318.56	240.76	40.5250504	-104.5842025	0.00	
13530.00†	90.000	359.364	6914.00	7421.57	7418.55	239.65	40.5253249	-104.5842028	0.00	
13630.00†	90.000	359.364	6914.00	7521.53	7518.55	238.54	40.5255994	-104.5842031	0.00	
13730.00†	90.000	359.364	6914.00	7621.49	7618.54	237.42	40.5258738	-104.5842033	0.00	
13830.00†	90.000	359.364	6914.00	7721.45	7718.53	236.31	40.5261483	-104.5842036	0.00	
13930.00†	90.000	359.364	6914.00	7821.41	7818.53	235.20	40.5264228	-104.5842039	0.00	
14030.00†	90.000	359.364	6914.00	7921.37	7918.52	234.09	40.5266973	-104.5842042	0.00	
14130.00†	90.000	359.364	6914.00	8021.33	8018.52	232.98	40.5269718	-104.5842045	0.00	
14230.00†	90.000	359.364	6914.00	8121.29	8118.51	231.87	40.5272463	-104.5842047	0.00	
14330.00†	90.000	359.364	6914.00	8221.25	8218.50	230.76	40.5275207	-104.5842050	0.00	
14430.00†	90.000	359.364	6914.00	8321.21	8318.50	229.65	40.5277952	-104.5842053	0.00	
14530.00†	90.000	359.364	6914.00	8421.17	8418.49	228.54	40.5280697	-104.5842056	0.00	
14630.00†	90.000	359.364	6914.00	8521.13	8518.48	227.43	40.5283442	-104.5842059	0.00	
14730.00†	90.000	359.364	6914.00	8621.09	8618.48	226.32	40.5286187	-104.5842061	0.00	
14830.00†	90.000	359.364	6914.00	8721.05	8718.47	225.21	40.5288932	-104.5842064	0.00	
14930.00†	90.000	359.364	6914.00	8821.01	8818.47	224.10	40.5291676	-104.5842067	0.00	
15030.00†	90.000	359.364	6914.00	8920.97	8918.46	222.98	40.5294421	-104.5842070	0.00	
15130.00†	90.000	359.364	6914.00	9020.93	9018.45	221.87	40.5297166	-104.5842073	0.00	
15230.00†	90.000	359.364	6914.00	9120.89	9118.45	220.76	40.5299911	-104.5842076	0.00	
15330.00†	90.000	359.364	6914.00	9220.85	9218.44	219.65	40.5302656	-104.5842078	0.00	
15430.00†	90.000	359.364	6914.00	9320.81	9318.44	218.54	40.5305401	-104.5842081	0.00	
15530.00†	90.000	359.364	6914.00	9420.77	9418.43	217.43	40.5308145	-104.5842084	0.00	
15630.00†	90.000	359.364	6914.00	9520.73	9518.42	216.32	40.5310890	-104.5842087	0.00	
15730.00†	90.000	359.364	6914.00	9620.69	9618.42	215.21	40.5313635	-104.5842090	0.00	
15830.00†	90.000	359.364	6914.00	9720.65	9718.41	214.10	40.5316380	-104.5842092	0.00	
15930.00†	90.000	359.364	6914.00	9820.61	9818.40	212.99	40.5319125	-104.5842095	0.00	
16030.00†	90.000	359.364	6914.00	9920.57	9918.40	211.88	40.5321870	-104.5842098	0.00	
16130.00†	90.000	359.364	6914.00	10020.53	10018.39	210.77	40.5324614	-104.5842101	0.00	
16230.00†	90.000	359.364	6914.00	10120.49	10118.39	209.66	40.5327359	-104.5842104	0.00	
16330.00†	90.000	359.364	6914.00	10220.45	10218.38	208.55	40.5330104	-104.5842106	0.00	
16430.00†	90.000	359.364	6914.00	10320.41	10318.37	207.43	40.5332849	-104.5842109	0.00	
16530.00†	90.000	359.364	6914.00	10420.37	10418.37	206.32	40.5335594	-104.5842112	0.00	
16630.00†	90.000	359.364	6914.00	10520.33	10518.36	205.21	40.5338339	-104.5842115	0.00	
16730.00†	90.000	359.364	6914.00	10620.29	10618.35	204.10	40.5341083	-104.5842118	0.00	
16830.00†	90.000	359.364	6914.00	10720.25	10718.35	202.99	40.5343828	-104.5842120	0.00	
16930.00†	90.000	359.364	6914.00	10820.21	10818.34	201.88	40.5346573	-104.5842123	0.00	
17030.00†	90.000	359.364	6914.00	10920.17	10918.34	200.77	40.5349318	-104.5842126	0.00	
17130.00†	90.000	359.364	6914.00	11020.13	11018.33	199.66	40.5352063	-104.5842129	0.00	
17230.00†	90.000	359.364	6914.00	11120.09	11118.32	198.55	40.5354808	-104.5842132	0.00	
17330.00†	90.000	359.364	6914.00	11220.05	11218.32	197.44	40.5357552	-104.5842134	0.00	
17430.00†	90.000	359.364	6914.00	11320.01	11318.31	196.33	40.5360297	-104.5842137	0.00	



Planned Wellpath Report

BISHOP A06-712 (REV-A.0) PWP

Page 6 of 7



REFERENCE WELLPATH IDENTIFICATION			
Operator	NOBLE ENERGY, INC	Well	BISHOP A06-712
Field	WELD COUNTY (NOBLE NAD 83 GRID)	API/Legal	
Facility	SEC.07-T06N-R64W	Wellbore	BISHOP A06-712 PWB
Slot	SLOT#24 BISHOP A06-712 (1010'FNL & 463'FEL,SEC.07)		

WELLPATH DATA (181 stations)										
MD [ft]	Inclination [°]	Azimuth [°]	TVD [ft]	Vert Sect [ft]	North [ft]	East [ft]	Latitude	Longitude	DLS [°/100ft]	Comments
17500.70	90.000	359.364	6914.00 ²	11390.69	11389.01	195.54	40.5362238	-104.5842139	0.00	BHL

HOLE & CASING SECTIONS - Ref Wellbore: BISHOP A06-712 PWB Ref Wellpath: BISHOP A06-712 (REV-A.0) PWP										
String/Diameter	Start MD [ft]	End MD [ft]	Interval [ft]	Start TVD [ft]	End TVD [ft]	Start N/S [ft]	Start E/W [ft]	End N/S [ft]	End E/W [ft]	
9.625in Casing Surface	30.00	1950.00	1920.00	30.00	1950.00	0.00	0.00	0.00	0.00	

TARGETS										
Name	MD [ft]	TVD [ft]	North [ft]	East [ft]	Grid East [US ft]	Grid North [US ft]	Latitude	Longitude	Shape	
OGDP 1 SEC.07-T06N-R64W	N/A	2.00	149.76	37.39	3254380.72	1428262.61	40.5053800	-104.5852000	polygon	
	2D Polygon: dimensions not calculated									
OGDP1 SEC.06-T06N-R64W	N/A	20.00	168.20	-4214.97	3250128.51	1428281.04	40.5055500	-104.6004900	polygon	
	2D Polygon: dimensions not calculated									
OGDP1 SEC.31-T07N-R64W	N/A	20.00	168.20	-4214.97	3250128.51	1428281.04	40.5055500	-104.6004900	polygon	
	2D Polygon: dimensions not calculated									
2) BISHOP A06-712 BHL Rev-1 (200'FSL & 230'FEL,SEC.31)	17500.70	6914.00	11389.01	195.54	3254538.86	1439501.46	40.5362238	-104.5842139	point	
1) BISHOP A06-712 LP Rev-1 (200'FSL & 143'FEL,SEC.06)	7327.94	6914.00	1216.87	308.53	3254651.85	1429329.68	40.5083012	-104.5841854	point	

SURVEY PROGRAM - Ref Wellbore: BISHOP A06-712 PWB Ref Wellpath: BISHOP A06-712 (REV-A.0) PWP					
Start MD [ft]	End MD [ft]	Positional Uncertainty Model	Log Name/Comment	Wellbore	
30.00	17500.70	OWSG MWD rev2 (MS+IFR1)		BISHOP A06-712 PWB	



Planned Wellpath Report
BISHOP A06-712 (REV-A.0) PWP
Page 7 of 7



REFERENCE WELLPATH IDENTIFICATION			
Operator	NOBLE ENERGY, INC	Well	BISHOP A06-712
Field	WELD COUNTY (NOBLE NAD 83 GRID)	API/Legal	
Facility	SEC.07-T06N-R64W	Wellbore	BISHOP A06-712 PWB
Slot	SLOT#24 BISHOP A06-712 (1010'FNL & 463'FEL,SEC.07)		

DESIGN COMMENTS				
MD [ft]	Inclination [°]	Azimuth [°]	TVD [ft]	Comment
30.00	0.000	25.378	30.00	SHL
2000.00	0.000	25.378	2000.00	End of Tangent
2444.77	8.895	25.378	2442.99	End of Build (XS)
6416.69	8.895	25.378	6367.14	KOP
7327.94	90.000	359.364	6914.00	LP/TPZ
17500.70	90.000	359.364	6914.00	BHL