

NOBLE ENERGY, INC

Location: COLORADO Slot: SLOT#23 BISHOP A06-722 (1009°FNL & 501°FEL,SEC.07)

Field: WELD COUNTY (NOBLE NAD 83 GRID) Well: BISHOP A06-722

Facility: SEC.07-T06N-R64W Wellbore: BISHOP A06-722 PWB

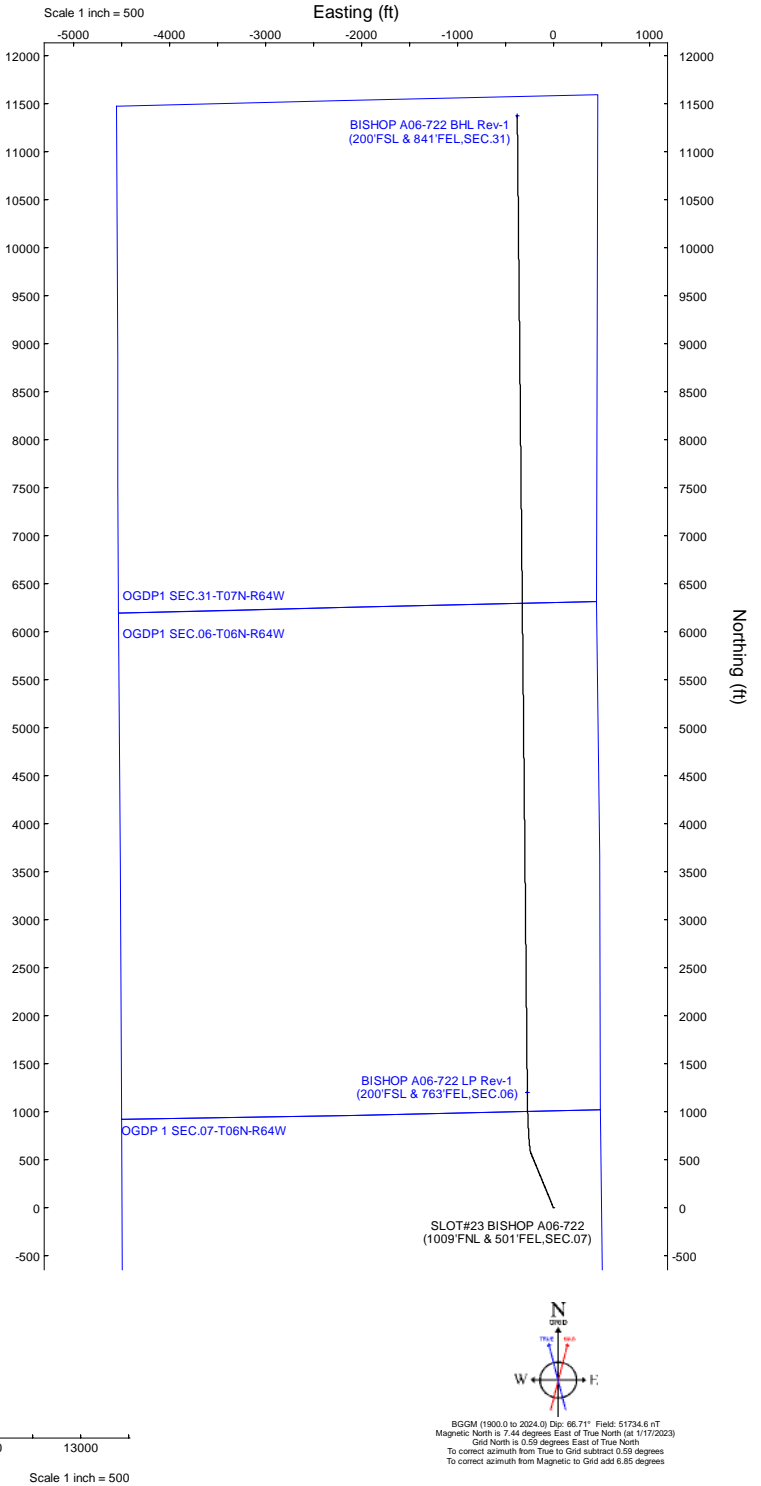
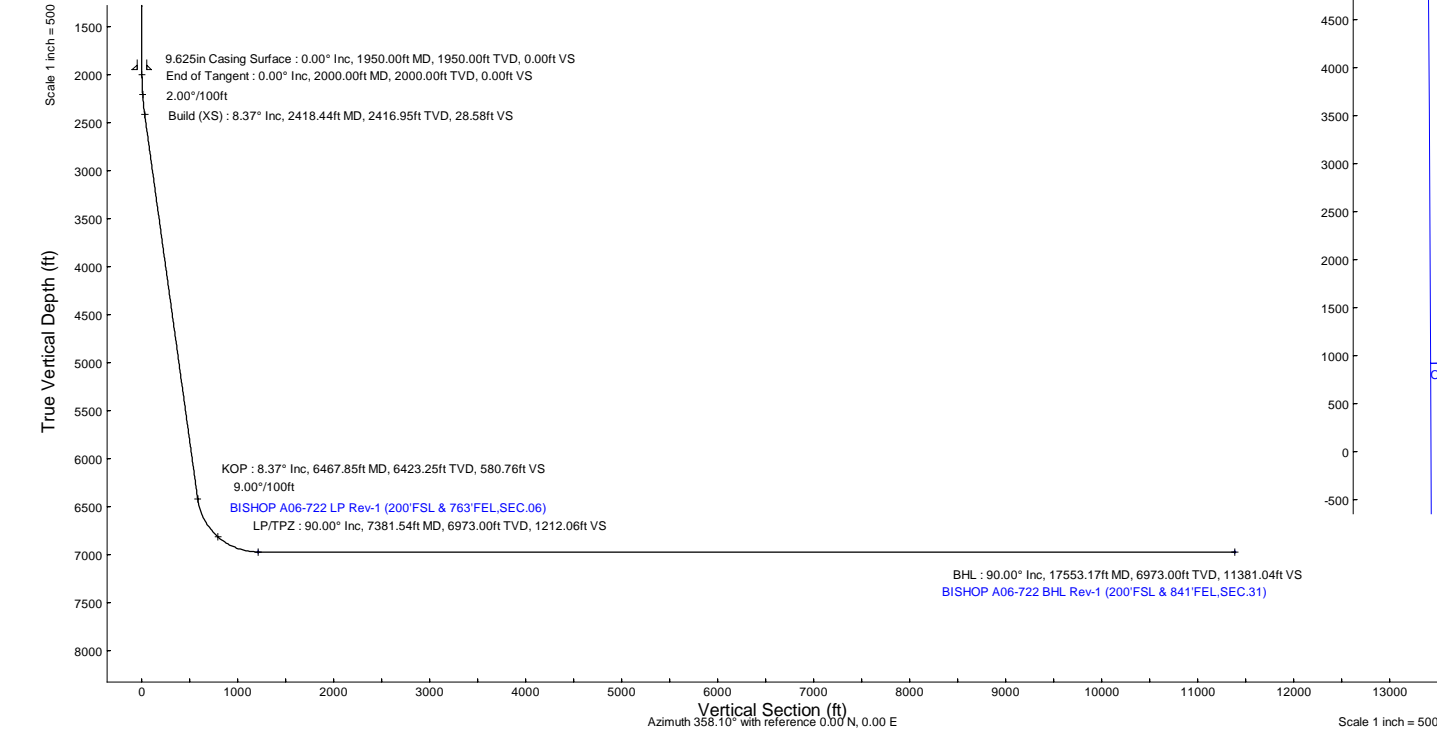
Plot reference wellpath is BISHOP A06-722 (REV-A.0) PWP		Grid System: NAD83 / Lambert Colorado SP, Northern Zone (501), US feet
True vertical depths are referenced to (4743GL+30KB@4773RKB) (RKB)		North Reference: Grid north
Reference wellpath measured depths are referenced to (4743GL+30KB@4773RKB) (RKB)		Scale: True distance
(4743GL+30KB@4773RKB) (RKB) to Mean Sea Level: 4773 feet		Coordinates are in feet referenced to Slot
Mean Sea Level to Ground level (At Slot: SLOT#23 BISHOP A06-722 (1009°FNL & 501°FEL,SEC.07): 0 feet		Depths are in feet
Offset wellpath MDs are referenced to each path's default MD datum		Created by: guemaler on 2023-01-17; Database: WA_Denver

Location Information					
Facility Name			Grid East (US ft)	Grid North (US ft)	Latitude
SEC.07-T06N-R64W			3254380.716	1426262.611	40°30'19.3680"N
Slot			Local N (ft)	Local E (ft)	Longitude
SLOT#23 BISHOP A06-722 (1009°FNL & 501°FEL,SEC.07)			-150.17	-76.32	104°35'6.7200"W
(4743GL+30KB@4773RKB) (RKB) to Ground level (At Slot: SLOT#23 BISHOP A06-722 (1009°FNL & 501°FEL,SEC.07))			4773ft		
Mean Sea Level to Ground level (At Slot: SLOT#23 BISHOP A06-722 (1009°FNL & 501°FEL,SEC.07))			0ft		
(4743GL+30KB@4773RKB) (RKB) to Mean Sea Level			4773ft		

Well Profile Data							
Design Comment	MD (ft)	Inc (")	Az (°)	TVD (ft)	Local N (ft)	Local E (ft)	DLS (°/100ft)
SHL	30.00	0.000	337.643	30.00	0.00	0.00	0.00
End of Tangent	2000.00	0.000	337.643	2000.00	0.00	0.00	0.00
Build (XS)	2418.44	8.369	337.643	2416.95	28.21	-11.60	2.00
KOP	6467.85	8.369	337.643	6423.25	573.27	-235.79	0.00
LP/TPZ	7381.54	90.000	359.412	6973.00	1203.71	-272.25	9.00
BHL	17553.17	90.000	359.412	6973.00	11374.81	-376.62	0.00

Targets							
Name	MD (ft)	TVD (ft)	Local N (ft)	Local E (ft)	Grid East (US ft)	Grid North (US ft)	Latitude
OGDP 1 SEC.07-T06N-R64W	N/A	1.00	150.17	76.32	3254380.72	1426262.61	40°30'19.3680"N
OGDP1 SEC.06-T06N-R64W	N/A	19.00	168.60	-4176.04	3250128.51	1426281.04	40°30'19.9800"N
OGDP1 SEC.31-T07N-R64W	N/A	19.00	168.60	-4176.04	3250128.51	1426281.04	40°30'19.9800"N
BISHOP A06-722 BHL Rev-1 (200°FSL & 841°FEL,SEC.31)	17553.17	6973.00	11374.81	-376.62	3253927.79	1439486.85	40°32'10.3236"N
BISHOP A06-722 LP Rev-1 (200°FSL & 763°FEL,SEC.06)	7381.54	6973.00	1203.71	-272.25	3254032.16	1429316.12	40°30'29.8135"N

Survey Program					
Start MD (ft)	End MD (ft)	Tool	Model	Log Name/Comment	Wellbore
30.00	17553.17	OWSG MWD rev2	OWSG MWD rev2 (MS+IFR1)		BISHOP A06-722 PWB





Planned Wellpath Report
BISHOP A06-722 (REV-A.0) PWP
Page 1 of 7



REFERENCE WELLPATH IDENTIFICATION			
Operator	NOBLE ENERGY, INC	Well	BISHOP A06-722
Field	WELD COUNTY (NOBLE NAD 83 GRID)	API/Legal	
Facility	SEC.07-T06N-R64W	Wellbore	BISHOP A06-722 PWB
Slot	SLOT#23 BISHOP A06-722 (1009'FNL & 501'FEL,SEC.07)		

REPORT SETUP INFORMATION			
Projection System	NAD83 / Lambert Colorado SP, Northern Zone (501), US feet	Software System	WellArchitect® 6.0
North Reference	Grid	User	Guenaler
Scale	0.999967	Report Generated	1/17/2023 at 11:20:58 AM
Convergence at slot	0.59° East	Database	WA_Denver

WELLPATH LOCATION						
	Local coordinates		Grid coordinates		Geographic coordinates	
	North[ft]	East[ft]	Easting[US ft]	Northing[US ft]	Latitude	Longitude
Slot Location	-150.17	-76.32	3254304.40	1428112.45	40.5049700°	-104.5854800°
Facility Reference Pt			3254380.72	1428262.61	40.5053800°	-104.5852000°
Field Reference Pt			3000000.00	4454105.15	48.7761986°	-105.5000000°

WELLPATH DATUM			
Calculation method	Minimum curvature	(4743'GL+30'KB@4773'RKB) (RKB) to Facility Vertical Datum	4773.00ft
Horizontal Reference Pt	Slot	(4743'GL+30'KB@4773'RKB) (RKB) to Mean Sea Level	4773.00ft
Vertical Reference Pt	(4743'GL+30'KB@4773'RKB) (RKB)	(4743'GL+30'KB@4773'RKB) (RKB) to Ground Level at Slot (SLOT#23 BISHOP A06-722 (1009'FNL & 501'FEL,SEC.07))	4773.00ft
MD Reference Pt	(4743'GL+30'KB@4773'RKB) (RKB)	Section Origin	N 0.00, E 0.00 ft
Field Vertical Reference	Mean Sea Level	Section Azimuth	358.10°



Planned Wellpath Report
BISHOP A06-722 (REV-A.0) PWP
Page 2 of 7



REFERENCE WELLPATH IDENTIFICATION			
Operator	NOBLE ENERGY, INC	Well	BISHOP A06-722
Field	WELD COUNTY (NOBLE NAD 83 GRID)	API/Legal	
Facility	SEC.07-T06N-R64W	Wellbore	BISHOP A06-722 PWB
Slot	SLOT#23 BISHOP A06-722 (1009'FNL & 501'FEL,SEC.07)		

WELLPATH DATA (182 stations) † = interpolated, ‡ = extrapolated station										
MD [ft]	Inclination [°]	Azimuth [°]	TVD [ft]	Vert Sect [ft]	North [ft]	East [ft]	Latitude	Longitude	DLS [°/100ft]	Comments
0.00†	0.000	337.643	0.00	0.00	0.00	0.00	40.5049700	-104.5854800	0.00	
30.00	0.000	337.643	30.00	0.00	0.00	0.00	40.5049700	-104.5854800	0.00	SHL
130.00†	0.000	337.643	130.00	0.00	0.00	0.00	40.5049700	-104.5854800	0.00	
230.00†	0.000	337.643	230.00	0.00	0.00	0.00	40.5049700	-104.5854800	0.00	
330.00†	0.000	337.643	330.00	0.00	0.00	0.00	40.5049700	-104.5854800	0.00	
430.00†	0.000	337.643	430.00	0.00	0.00	0.00	40.5049700	-104.5854800	0.00	
530.00†	0.000	337.643	530.00	0.00	0.00	0.00	40.5049700	-104.5854800	0.00	
630.00†	0.000	337.643	630.00	0.00	0.00	0.00	40.5049700	-104.5854800	0.00	
730.00†	0.000	337.643	730.00	0.00	0.00	0.00	40.5049700	-104.5854800	0.00	
830.00†	0.000	337.643	830.00	0.00	0.00	0.00	40.5049700	-104.5854800	0.00	
930.00†	0.000	337.643	930.00	0.00	0.00	0.00	40.5049700	-104.5854800	0.00	
1030.00†	0.000	337.643	1030.00	0.00	0.00	0.00	40.5049700	-104.5854800	0.00	
1130.00†	0.000	337.643	1130.00	0.00	0.00	0.00	40.5049700	-104.5854800	0.00	
1230.00†	0.000	337.643	1230.00	0.00	0.00	0.00	40.5049700	-104.5854800	0.00	
1330.00†	0.000	337.643	1330.00	0.00	0.00	0.00	40.5049700	-104.5854800	0.00	
1430.00†	0.000	337.643	1430.00	0.00	0.00	0.00	40.5049700	-104.5854800	0.00	
1530.00†	0.000	337.643	1530.00	0.00	0.00	0.00	40.5049700	-104.5854800	0.00	
1630.00†	0.000	337.643	1630.00	0.00	0.00	0.00	40.5049700	-104.5854800	0.00	
1730.00†	0.000	337.643	1730.00	0.00	0.00	0.00	40.5049700	-104.5854800	0.00	
1830.00†	0.000	337.643	1830.00	0.00	0.00	0.00	40.5049700	-104.5854800	0.00	
1930.00†	0.000	337.643	1930.00	0.00	0.00	0.00	40.5049700	-104.5854800	0.00	
2000.00	0.000	337.643	2000.00	0.00	0.00	0.00	40.5049700	-104.5854800	0.00	End of Tangent
2030.00†	0.600	337.643	2030.00	0.15	0.15	-0.06	40.5049704	-104.5854802	2.00	
2130.00†	2.600	337.643	2129.96	2.76	2.73	-1.12	40.5049775	-104.5854839	2.00	
2230.00†	4.600	337.643	2229.75	8.65	8.53	-3.51	40.5049935	-104.5854923	2.00	
2330.00†	6.600	337.643	2329.27	17.79	17.56	-7.22	40.5050184	-104.5855053	2.00	
2418.44	8.369	337.643	2416.95	28.58	28.21	-11.60	40.5050478	-104.5855207	2.00	Build (XS)
2430.00†	8.369	337.643	2428.39	30.16	29.77	-12.24	40.5050521	-104.5855229	0.00	
2530.00†	8.369	337.643	2527.33	43.79	43.23	-17.78	40.5050892	-104.5855423	0.00	
2630.00†	8.369	337.643	2626.26	57.43	56.69	-23.32	40.5051263	-104.5855617	0.00	
2730.00†	8.369	337.643	2725.20	71.07	70.15	-28.85	40.5051634	-104.5855811	0.00	
2830.00†	8.369	337.643	2824.13	84.70	83.61	-34.39	40.5052005	-104.5856006	0.00	
2930.00†	8.369	337.643	2923.07	98.34	97.07	-39.92	40.5052376	-104.5856200	0.00	
3030.00†	8.369	337.643	3022.00	111.97	110.53	-45.46	40.5052747	-104.5856394	0.00	
3130.00†	8.369	337.643	3120.94	125.61	123.99	-51.00	40.5053118	-104.5856588	0.00	
3230.00†	8.369	337.643	3219.87	139.25	137.45	-56.53	40.5053489	-104.5856782	0.00	
3330.00†	8.369	337.643	3318.81	152.88	150.91	-62.07	40.5053860	-104.5856976	0.00	
3430.00†	8.369	337.643	3417.74	166.52	164.37	-67.61	40.5054231	-104.5857170	0.00	
3530.00†	8.369	337.643	3516.68	180.15	177.83	-73.14	40.5054602	-104.5857364	0.00	
3630.00†	8.369	337.643	3615.61	193.79	191.29	-78.68	40.5054973	-104.5857558	0.00	
3730.00†	8.369	337.643	3714.55	207.43	204.75	-84.21	40.5055344	-104.5857752	0.00	
3830.00†	8.369	337.643	3813.48	221.06	218.21	-89.75	40.5055715	-104.5857946	0.00	
3930.00†	8.369	337.643	3912.42	234.70	231.67	-95.29	40.5056086	-104.5858140	0.00	
4030.00†	8.369	337.643	4011.35	248.33	245.13	-100.82	40.5056457	-104.5858334	0.00	
4130.00†	8.369	337.643	4110.29	261.97	258.59	-106.36	40.5056828	-104.5858529	0.00	



Planned Wellpath Report
BISHOP A06-722 (REV-A.0) PWP
Page 3 of 7



REFERENCE WELLPATH IDENTIFICATION			
Operator	NOBLE ENERGY, INC	Well	BISHOP A06-722
Field	WELD COUNTY (NOBLE NAD 83 GRID)	API/Legal	
Facility	SEC.07-T06N-R64W	Wellbore	BISHOP A06-722 PWB
Slot	SLOT#23 BISHOP A06-722 (1009'FNL & 501'FEL,SEC.07)		

WELLPATH DATA (182 stations) † = interpolated, ‡ = extrapolated station										
MD [ft]	Inclination [°]	Azimuth [°]	TVD [ft]	Vert Sect [ft]	North [ft]	East [ft]	Latitude	Longitude	DLS [°/100ft]	Comments
4230.00†	8.369	337.643	4209.22	275.61	272.05	-111.90	40.5057199	-104.5858723	0.00	
4330.00†	8.369	337.643	4308.16	289.24	285.51	-117.43	40.5057570	-104.5858917	0.00	
4430.00†	8.369	337.643	4407.09	302.88	298.97	-122.97	40.5057941	-104.5859111	0.00	
4530.00†	8.369	337.643	4506.03	316.52	312.43	-128.50	40.5058312	-104.5859305	0.00	
4630.00†	8.369	337.643	4604.96	330.15	325.89	-134.04	40.5058683	-104.5859499	0.00	
4730.00†	8.369	337.643	4703.90	343.79	339.35	-139.58	40.5059054	-104.5859693	0.00	
4830.00†	8.369	337.643	4802.84	357.42	352.81	-145.11	40.5059425	-104.5859887	0.00	
4930.00†	8.369	337.643	4901.77	371.06	366.27	-150.65	40.5059796	-104.5860081	0.00	
5030.00†	8.369	337.643	5000.71	384.70	379.74	-156.18	40.5060167	-104.5860275	0.00	
5130.00†	8.369	337.643	5099.64	398.33	393.20	-161.72	40.5060538	-104.5860469	0.00	
5230.00†	8.369	337.643	5198.58	411.97	406.66	-167.26	40.5060909	-104.5860663	0.00	
5330.00†	8.369	337.643	5297.51	425.60	420.12	-172.79	40.5061280	-104.5860858	0.00	
5430.00†	8.369	337.643	5396.45	439.24	433.58	-178.33	40.5061651	-104.5861052	0.00	
5530.00†	8.369	337.643	5495.38	452.88	447.04	-183.87	40.5062022	-104.5861246	0.00	
5630.00†	8.369	337.643	5594.32	466.51	460.50	-189.40	40.5062393	-104.5861440	0.00	
5730.00†	8.369	337.643	5693.25	480.15	473.96	-194.94	40.5062764	-104.5861634	0.00	
5830.00†	8.369	337.643	5792.19	493.78	487.42	-200.47	40.5063135	-104.5861828	0.00	
5930.00†	8.369	337.643	5891.12	507.42	500.88	-206.01	40.5063506	-104.5862022	0.00	
6030.00†	8.369	337.643	5990.06	521.06	514.34	-211.55	40.5063877	-104.5862216	0.00	
6130.00†	8.369	337.643	6088.99	534.69	527.80	-217.08	40.5064248	-104.5862410	0.00	
6230.00†	8.369	337.643	6187.93	548.33	541.26	-222.62	40.5064619	-104.5862604	0.00	
6330.00†	8.369	337.643	6286.86	561.97	554.72	-228.16	40.5064990	-104.5862798	0.00	
6430.00†	8.369	337.643	6385.80	575.60	568.18	-233.69	40.5065361	-104.5862993	0.00	
6467.85	8.369	337.643	6423.25	580.76	573.27	-235.79	40.5065501	-104.5863066	0.00	KOP
6530.00†	13.715	346.494	6484.23	592.23	584.63	-239.23	40.5065814	-104.5863186	9.00	
6630.00†	22.567	351.869	6579.17	622.98	615.22	-244.72	40.5066655	-104.5863372	9.00	
6730.00†	31.501	354.304	6668.15	668.21	660.30	-250.04	40.5067894	-104.5863546	9.00	
6830.00†	40.462	355.745	6748.99	726.82	718.77	-255.05	40.5069500	-104.5863705	9.00	
6930.00†	49.435	356.735	6819.70	797.36	789.20	-259.63	40.5071435	-104.5863843	9.00	
7030.00†	58.414	357.490	6878.52	878.09	869.84	-263.67	40.5073649	-104.5863959	9.00	
7130.00†	67.397	358.111	6924.02	967.02	958.71	-267.07	40.5076089	-104.5864048	9.00	
7230.00†	76.382	358.655	6955.08	1061.97	1053.62	-269.73	40.5078695	-104.5864109	9.00	
7330.00†	85.368	359.159	6970.92	1160.59	1152.23	-271.61	40.5081402	-104.5864140	9.00	
7381.54	90.000	359.412	6973.00 [†]	1212.06	1203.71	-272.25	40.5082815	-104.5864144	9.00	LP/TPZ
7430.00†	90.000	359.412	6973.00	1260.51	1252.17	-272.75	40.5084145	-104.5864144	0.00	
7530.00†	90.000	359.412	6973.00	1360.48	1352.16	-273.78	40.5086890	-104.5864143	0.00	
7630.00†	90.000	359.412	6973.00	1460.46	1452.16	-274.80	40.5089635	-104.5864143	0.00	
7730.00†	90.000	359.412	6973.00	1560.43	1552.15	-275.83	40.5092380	-104.5864143	0.00	
7830.00†	90.000	359.412	6973.00	1660.41	1652.15	-276.85	40.5095125	-104.5864143	0.00	
7930.00†	90.000	359.412	6973.00	1760.38	1752.14	-277.88	40.5097870	-104.5864143	0.00	
8030.00†	90.000	359.412	6973.00	1860.35	1852.14	-278.91	40.5100615	-104.5864143	0.00	
8130.00†	90.000	359.412	6973.00	1960.33	1952.13	-279.93	40.5103359	-104.5864143	0.00	
8230.00†	90.000	359.412	6973.00	2060.30	2052.13	-280.96	40.5106104	-104.5864142	0.00	
8330.00†	90.000	359.412	6973.00	2160.27	2152.12	-281.98	40.5108849	-104.5864142	0.00	
8430.00†	90.000	359.412	6973.00	2260.25	2252.12	-283.01	40.5111594	-104.5864142	0.00	



Planned Wellpath Report
BISHOP A06-722 (REV-A.0) PWP
Page 4 of 7



REFERENCE WELLPATH IDENTIFICATION			
Operator	NOBLE ENERGY, INC	Well	BISHOP A06-722
Field	WELD COUNTY (NOBLE NAD 83 GRID)	API/Legal	
Facility	SEC.07-T06N-R64W	Wellbore	BISHOP A06-722 PWB
Slot	SLOT#23 BISHOP A06-722 (1009'FNL & 501'FEL,SEC.07)		

WELLPATH DATA (182 stations) † = interpolated, ‡ = extrapolated station										
MD [ft]	Inclination [°]	Azimuth [°]	TVD [ft]	Vert Sect [ft]	North [ft]	East [ft]	Latitude	Longitude	DLS [°/100ft]	Comments
8530.00†	90.000	359.412	6973.00	2360.22	2352.11	-284.04	40.5114339	-104.5864142	0.00	
8630.00†	90.000	359.412	6973.00	2460.20	2452.11	-285.06	40.5117084	-104.5864142	0.00	
8730.00†	90.000	359.412	6973.00	2560.17	2552.10	-286.09	40.5119828	-104.5864142	0.00	
8830.00†	90.000	359.412	6973.00	2660.14	2652.10	-287.11	40.5122573	-104.5864141	0.00	
8930.00†	90.000	359.412	6973.00	2760.12	2752.09	-288.14	40.5125318	-104.5864141	0.00	
9030.00†	90.000	359.412	6973.00	2860.09	2852.09	-289.17	40.5128063	-104.5864141	0.00	
9130.00†	90.000	359.412	6973.00	2960.07	2952.08	-290.19	40.5130808	-104.5864141	0.00	
9230.00†	90.000	359.412	6973.00	3060.04	3052.07	-291.22	40.5133553	-104.5864141	0.00	
9330.00†	90.000	359.412	6973.00	3160.01	3152.07	-292.24	40.5136298	-104.5864141	0.00	
9430.00†	90.000	359.412	6973.00	3259.99	3252.06	-293.27	40.5139042	-104.5864141	0.00	
9530.00†	90.000	359.412	6973.00	3359.96	3352.06	-294.30	40.5141787	-104.5864140	0.00	
9630.00†	90.000	359.412	6973.00	3459.94	3452.05	-295.32	40.5144532	-104.5864140	0.00	
9730.00†	90.000	359.412	6973.00	3559.91	3552.05	-296.35	40.5147277	-104.5864140	0.00	
9830.00†	90.000	359.412	6973.00	3659.88	3652.04	-297.38	40.5150022	-104.5864140	0.00	
9930.00†	90.000	359.412	6973.00	3759.86	3752.04	-298.40	40.5152767	-104.5864140	0.00	
10030.00†	90.000	359.412	6973.00	3859.83	3852.03	-299.43	40.5155511	-104.5864140	0.00	
10130.00†	90.000	359.412	6973.00	3959.81	3952.03	-300.45	40.5158256	-104.5864140	0.00	
10230.00†	90.000	359.412	6973.00	4059.78	4052.02	-301.48	40.5161001	-104.5864139	0.00	
10330.00†	90.000	359.412	6973.00	4159.75	4152.02	-302.51	40.5163746	-104.5864139	0.00	
10430.00†	90.000	359.412	6973.00	4259.73	4252.01	-303.53	40.5166491	-104.5864139	0.00	
10530.00†	90.000	359.412	6973.00	4359.70	4352.01	-304.56	40.5169236	-104.5864139	0.00	
10630.00†	90.000	359.412	6973.00	4459.68	4452.00	-305.58	40.5171980	-104.5864139	0.00	
10730.00†	90.000	359.412	6973.00	4559.65	4552.00	-306.61	40.5174725	-104.5864139	0.00	
10830.00†	90.000	359.412	6973.00	4659.62	4651.99	-307.64	40.5177470	-104.5864138	0.00	
10930.00†	90.000	359.412	6973.00	4759.60	4751.99	-308.66	40.5180215	-104.5864138	0.00	
11030.00†	90.000	359.412	6973.00	4859.57	4851.98	-309.69	40.5182960	-104.5864138	0.00	
11130.00†	90.000	359.412	6973.00	4959.54	4951.97	-310.71	40.5185705	-104.5864138	0.00	
11230.00†	90.000	359.412	6973.00	5059.52	5051.97	-311.74	40.5188450	-104.5864138	0.00	
11330.00†	90.000	359.412	6973.00	5159.49	5151.96	-312.77	40.5191194	-104.5864138	0.00	
11430.00†	90.000	359.412	6973.00	5259.47	5251.96	-313.79	40.5193939	-104.5864138	0.00	
11530.00†	90.000	359.412	6973.00	5359.44	5351.95	-314.82	40.5196684	-104.5864137	0.00	
11630.00†	90.000	359.412	6973.00	5459.41	5451.95	-315.84	40.5199429	-104.5864137	0.00	
11730.00†	90.000	359.412	6973.00	5559.39	5551.94	-316.87	40.5202174	-104.5864137	0.00	
11830.00†	90.000	359.412	6973.00	5659.36	5651.94	-317.90	40.5204919	-104.5864137	0.00	
11930.00†	90.000	359.412	6973.00	5759.34	5751.93	-318.92	40.5207663	-104.5864137	0.00	
12030.00†	90.000	359.412	6973.00	5859.31	5851.93	-319.95	40.5210408	-104.5864137	0.00	
12130.00†	90.000	359.412	6973.00	5959.28	5951.92	-320.98	40.5213153	-104.5864137	0.00	
12230.00†	90.000	359.412	6973.00	6059.26	6051.92	-322.00	40.5215898	-104.5864136	0.00	
12330.00†	90.000	359.412	6973.00	6159.23	6151.91	-323.03	40.5218643	-104.5864136	0.00	
12430.00†	90.000	359.412	6973.00	6259.21	6251.91	-324.05	40.5221388	-104.5864136	0.00	
12530.00†	90.000	359.412	6973.00	6359.18	6351.90	-325.08	40.5224132	-104.5864136	0.00	
12630.00†	90.000	359.412	6973.00	6459.15	6451.90	-326.11	40.5226877	-104.5864136	0.00	
12730.00†	90.000	359.412	6973.00	6559.13	6551.89	-327.13	40.5229622	-104.5864136	0.00	
12830.00†	90.000	359.412	6973.00	6659.10	6651.89	-328.16	40.5232367	-104.5864135	0.00	
12930.00†	90.000	359.412	6973.00	6759.08	6751.88	-329.18	40.5235112	-104.5864135	0.00	



Planned Wellpath Report
BISHOP A06-722 (REV-A.0) PWP
Page 5 of 7



REFERENCE WELLPATH IDENTIFICATION			
Operator	NOBLE ENERGY, INC	Well	BISHOP A06-722
Field	WELD COUNTY (NOBLE NAD 83 GRID)	API/Legal	
Facility	SEC.07-T06N-R64W	Wellbore	BISHOP A06-722 PWB
Slot	SLOT#23 BISHOP A06-722 (1009'FNL & 501'FEL,SEC.07)		

WELLPATH DATA (182 stations) † = interpolated, ‡ = extrapolated station										
MD [ft]	Inclination [°]	Azimuth [°]	TVD [ft]	Vert Sect [ft]	North [ft]	East [ft]	Latitude	Longitude	DLS [°/100ft]	Comments
13030.00†	90.000	359.412	6973.00	6859.05	6851.87	-330.21	40.5237857	-104.5864135	0.00	
13130.00†	90.000	359.412	6973.00	6959.02	6951.87	-331.24	40.5240601	-104.5864135	0.00	
13230.00†	90.000	359.412	6973.00	7059.00	7051.86	-332.26	40.5243346	-104.5864135	0.00	
13330.00†	90.000	359.412	6973.00	7158.97	7151.86	-333.29	40.5246091	-104.5864135	0.00	
13430.00†	90.000	359.412	6973.00	7258.95	7251.85	-334.31	40.5248836	-104.5864135	0.00	
13530.00†	90.000	359.412	6973.00	7358.92	7351.85	-335.34	40.5251581	-104.5864134	0.00	
13630.00†	90.000	359.412	6973.00	7458.89	7451.84	-336.37	40.5254326	-104.5864134	0.00	
13730.00†	90.000	359.412	6973.00	7558.87	7551.84	-337.39	40.5257070	-104.5864134	0.00	
13830.00†	90.000	359.412	6973.00	7658.84	7651.83	-338.42	40.5259815	-104.5864134	0.00	
13930.00†	90.000	359.412	6973.00	7758.81	7751.83	-339.44	40.5262560	-104.5864134	0.00	
14030.00†	90.000	359.412	6973.00	7858.79	7851.82	-340.47	40.5265305	-104.5864134	0.00	
14130.00†	90.000	359.412	6973.00	7958.76	7951.82	-341.50	40.5268050	-104.5864134	0.00	
14230.00†	90.000	359.412	6973.00	8058.74	8051.81	-342.52	40.5270795	-104.5864133	0.00	
14330.00†	90.000	359.412	6973.00	8158.71	8151.81	-343.55	40.5273539	-104.5864133	0.00	
14430.00†	90.000	359.412	6973.00	8258.68	8251.80	-344.58	40.5276284	-104.5864133	0.00	
14530.00†	90.000	359.412	6973.00	8358.66	8351.80	-345.60	40.5279029	-104.5864133	0.00	
14630.00†	90.000	359.412	6973.00	8458.63	8451.79	-346.63	40.5281774	-104.5864133	0.00	
14730.00†	90.000	359.412	6973.00	8558.61	8551.79	-347.65	40.5284519	-104.5864133	0.00	
14830.00†	90.000	359.412	6973.00	8658.58	8651.78	-348.68	40.5287264	-104.5864132	0.00	
14930.00†	90.000	359.412	6973.00	8758.55	8751.77	-349.71	40.5290008	-104.5864132	0.00	
15030.00†	90.000	359.412	6973.00	8858.53	8851.77	-350.73	40.5292753	-104.5864132	0.00	
15130.00†	90.000	359.412	6973.00	8958.50	8951.76	-351.76	40.5295498	-104.5864132	0.00	
15230.00†	90.000	359.412	6973.00	9058.48	9051.76	-352.78	40.5298243	-104.5864132	0.00	
15330.00†	90.000	359.412	6973.00	9158.45	9151.75	-353.81	40.5300988	-104.5864132	0.00	
15430.00†	90.000	359.412	6973.00	9258.42	9251.75	-354.84	40.5303733	-104.5864132	0.00	
15530.00†	90.000	359.412	6973.00	9358.40	9351.74	-355.86	40.5306477	-104.5864131	0.00	
15630.00†	90.000	359.412	6973.00	9458.37	9451.74	-356.89	40.5309222	-104.5864131	0.00	
15730.00†	90.000	359.412	6973.00	9558.35	9551.73	-357.91	40.5311967	-104.5864131	0.00	
15830.00†	90.000	359.412	6973.00	9658.32	9651.73	-358.94	40.5314712	-104.5864131	0.00	
15930.00†	90.000	359.412	6973.00	9758.29	9751.72	-359.97	40.5317457	-104.5864131	0.00	
16030.00†	90.000	359.412	6973.00	9858.27	9851.72	-360.99	40.5320202	-104.5864131	0.00	
16130.00†	90.000	359.412	6973.00	9958.24	9951.71	-362.02	40.5322946	-104.5864131	0.00	
16230.00†	90.000	359.412	6973.00	10058.22	10051.71	-363.04	40.5325691	-104.5864130	0.00	
16330.00†	90.000	359.412	6973.00	10158.19	10151.70	-364.07	40.5328436	-104.5864130	0.00	
16430.00†	90.000	359.412	6973.00	10258.16	10251.70	-365.10	40.5331181	-104.5864130	0.00	
16530.00†	90.000	359.412	6973.00	10358.14	10351.69	-366.12	40.5333926	-104.5864130	0.00	
16630.00†	90.000	359.412	6973.00	10458.11	10451.69	-367.15	40.5336671	-104.5864130	0.00	
16730.00†	90.000	359.412	6973.00	10558.08	10551.68	-368.17	40.5339415	-104.5864130	0.00	
16830.00†	90.000	359.412	6973.00	10658.06	10651.67	-369.20	40.5342160	-104.5864129	0.00	
16930.00†	90.000	359.412	6973.00	10758.03	10751.67	-370.23	40.5344905	-104.5864129	0.00	
17030.00†	90.000	359.412	6973.00	10858.01	10851.66	-371.25	40.5347650	-104.5864129	0.00	
17130.00†	90.000	359.412	6973.00	10957.98	10951.66	-372.28	40.5350395	-104.5864129	0.00	
17230.00†	90.000	359.412	6973.00	11057.95	11051.65	-373.31	40.5353140	-104.5864129	0.00	
17330.00†	90.000	359.412	6973.00	11157.93	11151.65	-374.33	40.5355884	-104.5864129	0.00	
17430.00†	90.000	359.412	6973.00	11257.90	11251.64	-375.36	40.5358629	-104.5864129	0.00	



Planned Wellpath Report

BISHOP A06-722 (REV-A.0) PWP

Page 6 of 7



REFERENCE WELLPATH IDENTIFICATION			
Operator	NOBLE ENERGY, INC	Well	BISHOP A06-722
Field	WELD COUNTY (NOBLE NAD 83 GRID)	API/Legal	
Facility	SEC.07-T06N-R64W	Wellbore	BISHOP A06-722 PWB
Slot	SLOT#23 BISHOP A06-722 (1009'FNL & 501'FEL,SEC.07)		

WELLPATH DATA (182 stations) † = interpolated, ‡ = extrapolated station										
MD [ft]	Inclination [°]	Azimuth [°]	TVD [ft]	Vert Sect [ft]	North [ft]	East [ft]	Latitude	Longitude	DLS [°/100ft]	Comments
17530.00†	90.000	359.412	6973.00	11357.88	11351.64	-376.38	40.5361374	-104.5864128	0.00	
17553.17	90.000	359.412	6973.00‡	11381.04	11374.81	-376.62	40.5362010	-104.5864128	0.00	BHL

HOLE & CASING SECTIONS - Ref Wellbore: BISHOP A06-722 PWB Ref Wellpath: BISHOP A06-722 (REV-A.0) PWP									
String/Diameter	Start MD [ft]	End MD [ft]	Interval [ft]	Start TVD [ft]	End TVD [ft]	Start N/S [ft]	Start E/W [ft]	End N/S [ft]	End E/W [ft]
9.625in Casing Surface	30.00	1950.00	1920.00	30.00	1950.00	0.00	0.00	0.00	0.00

TARGETS									
Name	MD [ft]	TVD [ft]	North [ft]	East [ft]	Grid East [US ft]	Grid North [US ft]	Latitude	Longitude	Shape
OGDP 1 SEC.07-T06N-R64W	N/A	1.00	150.17	76.32	3254380.72	1428262.61	40.5053800	-104.5852000	polygon
	2D Polygon: dimensions not calculated								
OGDP1 SEC.06-T06N-R64W	N/A	19.00	168.60	-4176.04	3250128.51	1428281.04	40.5055500	-104.6004900	polygon
	2D Polygon: dimensions not calculated								
OGDP1 SEC.31-T07N-R64W	N/A	19.00	168.60	-4176.04	3250128.51	1428281.04	40.5055500	-104.6004900	polygon
	2D Polygon: dimensions not calculated								
2) BISHOP A06-722 BHL Rev-1 (200'FSL & 841'FEL,SEC.31)	17553.17	6973.00	11374.81	-376.62	3253927.79	1439486.85	40.5362010	-104.5864128	point
1) BISHOP A06-722 LP Rev-1 (200'FSL & 763'FEL,SEC.06)	7381.54	6973.00	1203.71	-272.25	3254032.16	1429316.12	40.5082815	-104.5864144	point

SURVEY PROGRAM - Ref Wellbore: BISHOP A06-722 PWB Ref Wellpath: BISHOP A06-722 (REV-A.0) PWP				
Start MD [ft]	End MD [ft]	Positional Uncertainty Model	Log Name/Comment	Wellbore
30.00	17553.17	OWSG MWD rev2 (MS+IFR1)		BISHOP A06-722 PWB



Planned Wellpath Report

BISHOP A06-722 (REV-A.0) PWP

Page 7 of 7



REFERENCE WELLPATH IDENTIFICATION			
Operator	NOBLE ENERGY, INC	Well	BISHOP A06-722
Field	WELD COUNTY (NOBLE NAD 83 GRID)	API/Legal	
Facility	SEC.07-T06N-R64W	Wellbore	BISHOP A06-722 PWB
Slot	SLOT#23 BISHOP A06-722 (1009'FNL & 501'FEL,SEC.07)		

DESIGN COMMENTS				
MD [ft]	Inclination [°]	Azimuth [°]	TVD [ft]	Comment
30.00	0.000	337.643	30.00	SHL
2000.00	0.000	337.643	2000.00	End of Tangent
2418.44	8.369	337.643	2416.95	Build (XS)
6467.85	8.369	337.643	6423.25	KOP
7381.54	90.000	359.412	6973.00	LP/TPZ
17553.17	90.000	359.412	6973.00	BHL