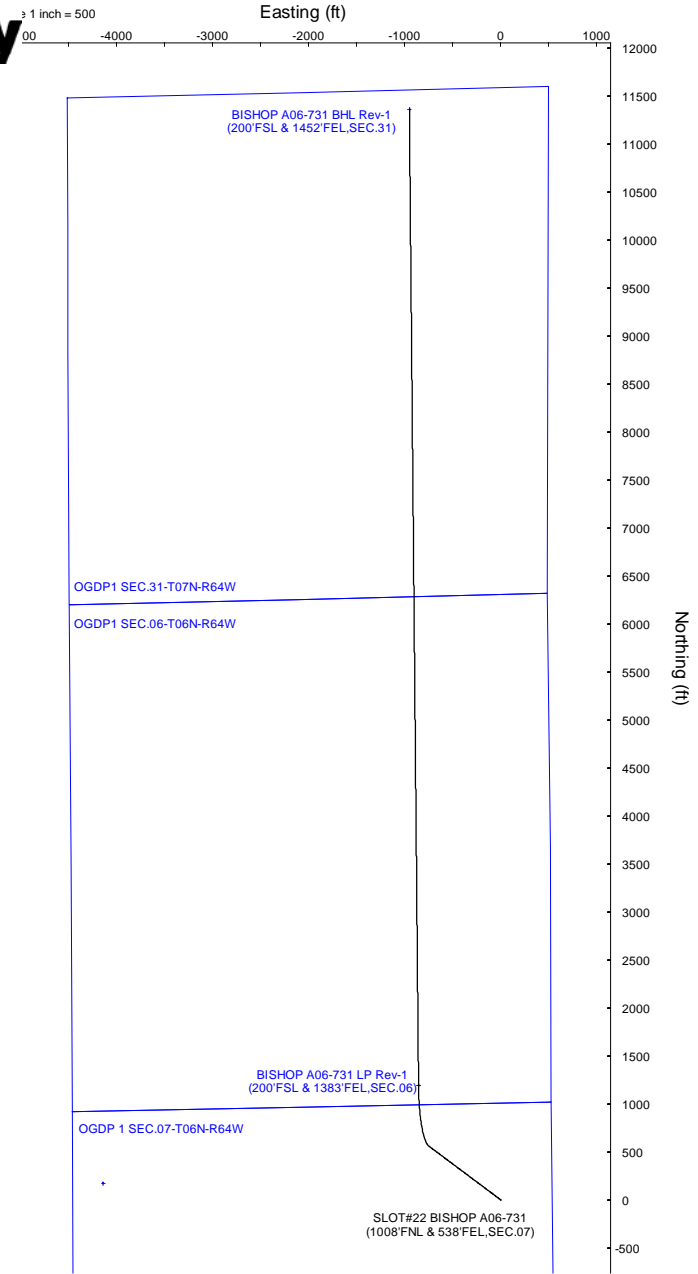


NOBLE ENERGY, INC



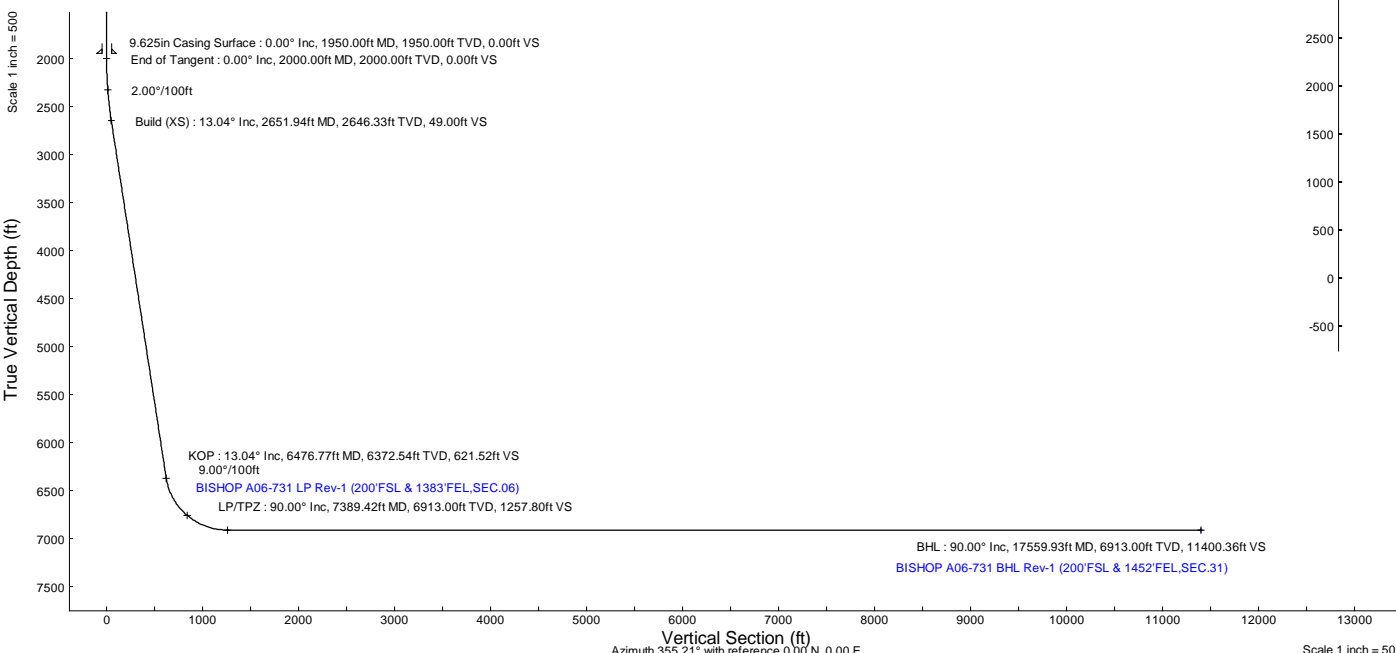
Location:	COLORADO	Slot:	SLOT#22 BISHOP A06-731 (1008FNL & 538FEL,SEC.07)
Field:	WELD COUNTY (NOBLE NAD 83 GRID)	Well:	BISHOP A06-731
Facility:	SEC.07-T06N-R64W	Wellbore:	BISHOP A06-731 PWB
Plot reference wellpath is BISHOP A06-731 (REV-A.0) PWP			
True vertical depths are referenced to (4743GL+30KB@4773RKB) (RKB)		Grid System: NAD83 / Lambert Colorado SP, Northern Zone (50'), US feet	
Reference wellpath measured depths are referenced to (4743GL+30KB@4773RKB) (RKB)		North Reference: Grid north	
(4743GL+30KB@4773RKB) (RKB) to Mean Sea Level: 4773 feet		Scale: True distance	
Mean Sea Level to Ground level (At Slot: SLOT#22 BISHOP A06-731 (1008FNL & 538FEL,SEC.07): 0 feet		Coordinates are in feet referenced to Slot	
Offset wellpath MDs are referenced to each path's default MD datum		Depths are in feet	
		Created by: gurnaler on 2023-01-17; Database: WA_Denver	

Location Information						
Facility Name		Grid East (US ft)	Grid North (US ft)	Latitude	Longitude	
SEC.07-T06N-R64W		3254380.716	1426262.611	40°30'19.3680"N	104°35'6.7200"W	
Slot	Local N (ft)	Local E (ft)	Grid East (US ft)	Grid North (US ft)	Latitude	Longitude
SLOT#22 BISHOP A06-731 (1008FNL & 538FEL,SEC.07)	-150.54	-112.47	3254268.251	1426112.078	40°30'17.8920"N	104°35'6.1960"W
(4743GL+30KB@4773RKB) (RKB) to Ground level (At Slot: SLOT#22 BISHOP A06-731 (1008FNL & 538FEL,SEC.07))		4773ft				
Mean Sea Level to Ground level (At Slot: SLOT#22 BISHOP A06-731 (1008FNL & 538FEL,SEC.07))		0ft				
(4743GL+30KB@4773RKB) (RKB) to Mean Sea Level		4773ft				

Well Profile Data								
Design Comment	MD (ft)	Inc (°)	Az (°)	TVD (ft)	Local N (ft)	Local E (ft)	DLS (*/100ft)	VS (ft)
SHL	30.00	0.000	306.776	30.00	0.00	0.00	0.00	0.00
End of Tangent	2000.00	0.000	306.776	2000.00	0.00	0.00	0.00	0.00
Build (XS)	2651.94	13.039	306.776	2646.33	44.22	-59.16	2.00	49.00
KOP	6476.77	13.039	306.776	6372.54	560.85	-750.35	0.00	621.52
LP/TPZ	7389.42	90.000	359.461	6913.00	1190.52	-855.82	9.00	1257.80
BHL	17559.93	90.000	359.461	6913.00	11360.57	-951.56	0.00	11400.36

Targets								
Name	MD (ft)	TVD (ft)	Local N (ft)	Local E (ft)	Grid East (US ft)	Grid North (US ft)	Latitude	Longitude
OGDP1 SEC.07-T06N-R64W	N/A	1.00	150.54	112.47	3254380.72	1426262.61	40°30'19.3680"N	104°35'6.7200"W
OGDP1 SEC.06-T06N-R64W	N/A	19.00	168.97	-4139.89	3250128.51	1428281.04	40°30'19.9800"N	104°36'1.7640"W
OGDP1 SEC.31-T07N-R64W	N/A	19.00	168.97	-4139.89	3250128.51	1428281.04	40°30'19.9800"N	104°36'1.7640"W
BISHOP A06-731 BHL Rev-1 (200FSL & 1452FEL,SEC.31)	17559.93	6913.00	11360.57	-951.56	3253316.72	1438472.25	40°32'10.2414"N	104°35'18.0023"W
BISHOP A06-731 LP Rev-1 (200FSL & 1383FEL,SEC.06)	7389.42	6913.00	1190.52	-855.82	3253412.46	1429302.55	40°30'29.7425"N	104°35'19.1160"W

Survey Program					
Start MD (ft)	End MD (ft)	Tool	Model	Log Name/Comment	Wellbore
30.00	17559.93	OWSG MWD rev2	OWSG MWD rev2 (MS+IFR1)		BISHOP A06-731 PWB



N
↑
Magnetic North is 7.44 degrees East of True North (at 1/17/2023)
Grid North is 0.59 degrees East of True North
To correct azimuth from True to Grid subtract 0.59 degrees
To correct azimuth from Magnetic to Grid add 6.85 degrees



Planned Wellpath Report

BISHOP A06-731 (REV-A.0) PWP

Page 1 of 7



REFERENCE WELLPATH IDENTIFICATION

Operator	NOBLE ENERGY, INC	Well	BISHOP A06-731
Field	WELD COUNTY (NOBLE NAD 83 GRID)	API/Legal	
Facility	SEC.07-T06N-R64W	Wellbore	BISHOP A06-731 PWB
Slot	SLOT#22 BISHOP A06-731 (1008'FNL & 538'FEL,SEC.07)		

REPORT SETUP INFORMATION

Projection System	NAD83 / Lambert Colorado SP, Northern Zone (501), US feet	Software System	WellArchitect® 6.0
North Reference	Grid	User	Guenaler
Scale	0.999967	Report Generated	1/17/2023 at 11:20:54 AM
Convergence at slot	0.59° East	Database	WA_Denver

WELLPATH LOCATION

	Local coordinates		Grid coordinates		Geographic coordinates	
	North[ft]	East[ft]	Easting[US ft]	Northing[US ft]	Latitude	Longitude
Slot Location	-150.54	-112.47	3254268.25	1428112.08	40.5049700°	-104.5856100°
Facility Reference Pt			3254380.72	1428262.61	40.5053800°	-104.5852000°
Field Reference Pt			3000000.00	4454105.15	48.7761986°	-105.5000000°

WELLPATH DATUM

Calculation method	Minimum curvature	(4743'GL+30'KB@4773'RKB) (RKB) to Facility Vertical Datum	4773.00ft
Horizontal Reference Pt	Slot	(4743'GL+30'KB@4773'RKB) (RKB) to Mean Sea Level	4773.00ft
Vertical Reference Pt	(4743'GL+30'KB@4773'RKB) (RKB)	(4743'GL+30'KB@4773'RKB) (RKB) to Ground Level at Slot (SLOT#22 BISHOP A06-731 (1008'FNL & 538'FEL,SEC.07))	4773.00ft
MD Reference Pt	(4743'GL+30'KB@4773'RKB) (RKB)	Section Origin	N 0.00, E 0.00 ft
Field Vertical Reference	Mean Sea Level	Section Azimuth	355.21°



Planned Wellpath Report

BISHOP A06-731 (REV-A.0) PWP
Page 2 of 7



REFERENCE WELLPATH IDENTIFICATION			
Operator	NOBLE ENERGY, INC	Well	BISHOP A06-731
Field	WELD COUNTY (NOBLE NAD 83 GRID)	API/Legal	
Facility	SEC.07-T06N-R64W	Wellbore	BISHOP A06-731 PWB
Slot	SLOT#22 BISHOP A06-731 (1008'FNL & 538'FEL,SEC.07)		

WELLPATH DATA (182 stations) † = interpolated, ‡ = extrapolated station										
MD [ft]	Inclination [°]	Azimuth [°]	TVD [ft]	Vert Sect [ft]	North [ft]	East [ft]	Latitude	Longitude	DLS [°/100ft]	Comments
0.00†	0.000	306.776	0.00	0.00	0.00	0.00	40.5049700	-104.5856100	0.00	
30.00	0.000	306.776	30.00	0.00	0.00	0.00	40.5049700	-104.5856100	0.00	SHL
130.00†	0.000	306.776	130.00	0.00	0.00	0.00	40.5049700	-104.5856100	0.00	
230.00†	0.000	306.776	230.00	0.00	0.00	0.00	40.5049700	-104.5856100	0.00	
330.00†	0.000	306.776	330.00	0.00	0.00	0.00	40.5049700	-104.5856100	0.00	
430.00†	0.000	306.776	430.00	0.00	0.00	0.00	40.5049700	-104.5856100	0.00	
530.00†	0.000	306.776	530.00	0.00	0.00	0.00	40.5049700	-104.5856100	0.00	
630.00†	0.000	306.776	630.00	0.00	0.00	0.00	40.5049700	-104.5856100	0.00	
730.00†	0.000	306.776	730.00	0.00	0.00	0.00	40.5049700	-104.5856100	0.00	
830.00†	0.000	306.776	830.00	0.00	0.00	0.00	40.5049700	-104.5856100	0.00	
930.00†	0.000	306.776	930.00	0.00	0.00	0.00	40.5049700	-104.5856100	0.00	
1030.00†	0.000	306.776	1030.00	0.00	0.00	0.00	40.5049700	-104.5856100	0.00	
1130.00†	0.000	306.776	1130.00	0.00	0.00	0.00	40.5049700	-104.5856100	0.00	
1230.00†	0.000	306.776	1230.00	0.00	0.00	0.00	40.5049700	-104.5856100	0.00	
1330.00†	0.000	306.776	1330.00	0.00	0.00	0.00	40.5049700	-104.5856100	0.00	
1430.00†	0.000	306.776	1430.00	0.00	0.00	0.00	40.5049700	-104.5856100	0.00	
1530.00†	0.000	306.776	1530.00	0.00	0.00	0.00	40.5049700	-104.5856100	0.00	
1630.00†	0.000	306.776	1630.00	0.00	0.00	0.00	40.5049700	-104.5856100	0.00	
1730.00†	0.000	306.776	1730.00	0.00	0.00	0.00	40.5049700	-104.5856100	0.00	
1830.00†	0.000	306.776	1830.00	0.00	0.00	0.00	40.5049700	-104.5856100	0.00	
1930.00†	0.000	306.776	1930.00	0.00	0.00	0.00	40.5049700	-104.5856100	0.00	
2000.00	0.000	306.776	2000.00	0.00	0.00	0.00	40.5049700	-104.5856100	0.00	End of Tangent
2030.00†	0.600	306.776	2030.00	0.10	0.09	-0.13	40.5049703	-104.5856104	2.00	
2130.00†	2.600	306.776	2129.96	1.96	1.77	-2.36	40.5049749	-104.5856184	2.00	
2230.00†	4.600	306.776	2229.75	6.12	5.52	-7.39	40.5049854	-104.5856364	2.00	
2330.00†	6.600	306.776	2329.27	12.60	11.37	-15.21	40.5050016	-104.5856643	2.00	
2430.00†	8.600	306.776	2428.39	21.37	19.28	-25.80	40.5050237	-104.5857021	2.00	
2530.00†	10.600	306.776	2526.98	32.43	29.27	-39.16	40.5050514	-104.5857497	2.00	
2630.00†	12.600	306.776	2624.93	45.77	41.31	-55.26	40.5050849	-104.5858072	2.00	
2651.94	13.039	306.776	2646.33	49.00	44.22	-59.16	40.5050930	-104.5858211	2.00	Build (XS)
2730.00†	13.039	306.776	2722.37	60.69	54.76	-73.27	40.5051224	-104.5858714	0.00	
2830.00†	13.039	306.776	2819.80	75.66	68.27	-91.34	40.5051600	-104.5859359	0.00	
2930.00†	13.039	306.776	2917.22	90.63	81.78	-109.41	40.5051976	-104.5860004	0.00	
3030.00†	13.039	306.776	3014.64	105.59	95.29	-127.48	40.5052351	-104.5860649	0.00	
3130.00†	13.039	306.776	3112.06	120.56	108.79	-145.55	40.5052727	-104.5861293	0.00	
3230.00†	13.039	306.776	3209.48	135.53	122.30	-163.62	40.5053103	-104.5861938	0.00	
3330.00†	13.039	306.776	3306.91	150.50	135.81	-181.69	40.5053479	-104.5862583	0.00	
3430.00†	13.039	306.776	3404.33	165.47	149.31	-199.76	40.5053855	-104.5863228	0.00	
3530.00†	13.039	306.776	3501.75	180.44	162.82	-217.84	40.5054231	-104.5863873	0.00	
3630.00†	13.039	306.776	3599.17	195.40	176.33	-235.91	40.5054606	-104.5864517	0.00	
3730.00†	13.039	306.776	3696.59	210.37	189.84	-253.98	40.5054982	-104.5865162	0.00	
3830.00†	13.039	306.776	3794.01	225.34	203.34	-272.05	40.5055358	-104.5865807	0.00	
3930.00†	13.039	306.776	3891.44	240.31	216.85	-290.12	40.5055734	-104.5866452	0.00	
4030.00†	13.039	306.776	3988.86	255.28	230.36	-308.19	40.5056110	-104.5867097	0.00	
4130.00†	13.039	306.776	4086.28	270.25	243.86	-326.26	40.5056486	-104.5867741	0.00	



Planned Wellpath Report

BISHOP A06-731 (REV-A.0) PWP

Page 3 of 7



REFERENCE WELLPATH IDENTIFICATION

Operator	NOBLE ENERGY, INC	Well	BISHOP A06-731
Field	WELD COUNTY (NOBLE NAD 83 GRID)	API/Legal	
Facility	SEC.07-T06N-R64W	Wellbore	BISHOP A06-731 PWB
Slot	SLOT#22 BISHOP A06-731 (1008'FNL & 538'FEL,SEC.07)		

WELLPATH DATA (182 stations) † = interpolated, ‡ = extrapolated station

MD [ft]	Inclination [°]	Azimuth [°]	TVD [ft]	Vert Sect [ft]	North [ft]	East [ft]	Latitude	Longitude	DLS [°/100ft]	Comments
4230.00†	13.039	306.776	4183.70	285.21	257.37	-344.33	40.5056861	-104.5868386	0.00	
4330.00†	13.039	306.776	4281.12	300.18	270.88	-362.40	40.5057237	-104.5869031	0.00	
4430.00†	13.039	306.776	4378.54	315.15	284.39	-380.47	40.5057613	-104.5869676	0.00	
4530.00†	13.039	306.776	4475.97	330.12	297.89	-398.55	40.5057989	-104.5870321	0.00	
4630.00†	13.039	306.776	4573.39	345.09	311.40	-416.62	40.5058365	-104.5870965	0.00	
4730.00†	13.039	306.776	4670.81	360.06	324.91	-434.69	40.5058741	-104.5871610	0.00	
4830.00†	13.039	306.776	4768.23	375.02	338.41	-452.76	40.5059117	-104.5872255	0.00	
4930.00†	13.039	306.776	4865.65	389.99	351.92	-470.83	40.5059492	-104.5872900	0.00	
5030.00†	13.039	306.776	4963.07	404.96	365.43	-488.90	40.5059868	-104.5873545	0.00	
5130.00†	13.039	306.776	5060.50	419.93	378.94	-506.97	40.5060244	-104.5874189	0.00	
5230.00†	13.039	306.776	5157.92	434.90	392.44	-525.04	40.5060620	-104.5874834	0.00	
5330.00†	13.039	306.776	5255.34	449.87	405.95	-543.11	40.5060996	-104.5875479	0.00	
5430.00†	13.039	306.776	5352.76	464.84	419.46	-561.18	40.5061372	-104.5876124	0.00	
5530.00†	13.039	306.776	5450.18	479.80	432.97	-579.26	40.5061747	-104.5876769	0.00	
5630.00†	13.039	306.776	5547.61	494.77	446.47	-597.33	40.5062123	-104.5877413	0.00	
5730.00†	13.039	306.776	5645.03	509.74	459.98	-615.40	40.5062499	-104.5878058	0.00	
5830.00†	13.039	306.776	5742.45	524.71	473.49	-633.47	40.5062875	-104.5878703	0.00	
5930.00†	13.039	306.776	5839.87	539.68	486.99	-651.54	40.5063251	-104.5879348	0.00	
6030.00†	13.039	306.776	5937.29	554.65	500.50	-669.61	40.5063627	-104.5879993	0.00	
6130.00†	13.039	306.776	6034.71	569.61	514.01	-687.68	40.5064002	-104.5880637	0.00	
6230.00†	13.039	306.776	6132.14	584.58	527.52	-705.75	40.5064378	-104.5881282	0.00	
6330.00†	13.039	306.776	6229.56	599.55	541.02	-723.82	40.5064754	-104.5881927	0.00	
6430.00†	13.039	306.776	6326.98	614.52	554.53	-741.89	40.5065130	-104.5882572	0.00	
6476.77	13.039	306.776	6372.54	621.52	560.85	-750.35	40.5065306	-104.5882873	0.00	KOP
6530.00†	16.346	320.560	6424.04	631.67	570.23	-759.92	40.5065566	-104.5883214	9.00	
6630.00†	23.926	334.934	6517.92	662.33	599.53	-777.49	40.5066375	-104.5883835	9.00	
6730.00†	32.215	342.465	6606.10	707.44	643.40	-794.14	40.5067584	-104.5884418	9.00	
6830.00†	40.782	347.133	6686.43	765.90	700.78	-809.48	40.5069163	-104.5884948	9.00	
6930.00†	49.481	350.404	6756.92	836.25	770.24	-823.11	40.5071073	-104.5885413	9.00	
7030.00†	58.250	352.916	6815.84	916.78	850.07	-834.72	40.5073268	-104.5885800	9.00	
7130.00†	67.060	354.990	6861.73	1005.49	938.32	-844.00	40.5075692	-104.5886102	9.00	
7230.00†	75.894	356.808	6893.47	1100.20	1032.80	-850.74	40.5078288	-104.5886309	9.00	
7330.00†	84.741	358.489	6910.27	1198.59	1131.19	-854.76	40.5080989	-104.5886417	9.00	
7389.42	90.000	359.461	6913.00†	1257.80	1190.52	-855.82	40.5082618	-104.5886433	9.00	LP/TPZ
7430.00†	90.000	359.461	6913.00	1298.26	1231.09	-856.20	40.5083732	-104.5886432	0.00	
7530.00†	90.000	359.461	6913.00	1397.99	1331.09	-857.14	40.5086477	-104.5886429	0.00	
7630.00†	90.000	359.461	6913.00	1497.71	1431.09	-858.08	40.5089221	-104.5886426	0.00	
7730.00†	90.000	359.461	6913.00	1597.44	1531.08	-859.03	40.5091966	-104.5886423	0.00	
7830.00†	90.000	359.461	6913.00	1697.16	1631.08	-859.97	40.5094711	-104.5886420	0.00	
7930.00†	90.000	359.461	6913.00	1796.89	1731.07	-860.91	40.5097456	-104.5886417	0.00	
8030.00†	90.000	359.461	6913.00	1896.61	1831.07	-861.85	40.5100201	-104.5886414	0.00	
8130.00†	90.000	359.461	6913.00	1996.34	1931.06	-862.79	40.5102946	-104.5886410	0.00	
8230.00†	90.000	359.461	6913.00	2096.07	2031.06	-863.73	40.5105691	-104.5886407	0.00	
8330.00†	90.000	359.461	6913.00	2195.79	2131.05	-864.67	40.5108435	-104.5886404	0.00	
8430.00†	90.000	359.461	6913.00	2295.52	2231.05	-865.61	40.5111180	-104.5886401	0.00	



Planned Wellpath Report

BISHOP A06-731 (REV-A.0) PWP
Page 4 of 7



REFERENCE WELLPATH IDENTIFICATION			
Operator	NOBLE ENERGY, INC	Well	BISHOP A06-731
Field	WELD COUNTY (NOBLE NAD 83 GRID)	API/Legal	
Facility	SEC.07-T06N-R64W	Wellbore	BISHOP A06-731 PWB
Slot	SLOT#22 BISHOP A06-731 (1008'FNL & 538'FEL,SEC.07)		

WELLPATH DATA (182 stations) † = interpolated, ‡ = extrapolated station										
MD [ft]	Inclination [°]	Azimuth [°]	TVD [ft]	Vert Sect [ft]	North [ft]	East [ft]	Latitude	Longitude	DLS [°/100ft]	Comments
8530.00†	90.000	359.461	6913.00	2395.24	2331.05	-866.56	40.5113925	-104.5886398	0.00	
8630.00†	90.000	359.461	6913.00	2494.97	2431.04	-867.50	40.5116670	-104.5886395	0.00	
8730.00†	90.000	359.461	6913.00	2594.69	2531.04	-868.44	40.5119415	-104.5886392	0.00	
8830.00†	90.000	359.461	6913.00	2694.42	2631.03	-869.38	40.5122160	-104.5886389	0.00	
8930.00†	90.000	359.461	6913.00	2794.14	2731.03	-870.32	40.5124904	-104.5886386	0.00	
9030.00†	90.000	359.461	6913.00	2893.87	2831.02	-871.26	40.5127649	-104.5886382	0.00	
9130.00†	90.000	359.461	6913.00	2993.59	2931.02	-872.20	40.5130394	-104.5886379	0.00	
9230.00†	90.000	359.461	6913.00	3093.32	3031.01	-873.15	40.5133139	-104.5886376	0.00	
9330.00†	90.000	359.461	6913.00	3193.04	3131.01	-874.09	40.5135884	-104.5886373	0.00	
9430.00†	90.000	359.461	6913.00	3292.77	3231.01	-875.03	40.5138629	-104.5886370	0.00	
9530.00†	90.000	359.461	6913.00	3392.49	3331.00	-875.97	40.5141374	-104.5886367	0.00	
9630.00†	90.000	359.461	6913.00	3492.22	3431.00	-876.91	40.5144118	-104.5886364	0.00	
9730.00†	90.000	359.461	6913.00	3591.94	3530.99	-877.85	40.5146863	-104.5886361	0.00	
9830.00†	90.000	359.461	6913.00	3691.67	3630.99	-878.79	40.5149608	-104.5886358	0.00	
9930.00†	90.000	359.461	6913.00	3791.39	3730.98	-879.74	40.5152353	-104.5886355	0.00	
10030.00†	90.000	359.461	6913.00	3891.12	3830.98	-880.68	40.5155098	-104.5886351	0.00	
10130.00†	90.000	359.461	6913.00	3990.84	3930.97	-881.62	40.5157843	-104.5886348	0.00	
10230.00†	90.000	359.461	6913.00	4090.57	4030.97	-882.56	40.5160587	-104.5886345	0.00	
10330.00†	90.000	359.461	6913.00	4190.29	4130.97	-883.50	40.5163332	-104.5886342	0.00	
10430.00†	90.000	359.461	6913.00	4290.02	4230.96	-884.44	40.5166077	-104.5886339	0.00	
10530.00†	90.000	359.461	6913.00	4389.74	4330.96	-885.38	40.5168822	-104.5886336	0.00	
10630.00†	90.000	359.461	6913.00	4489.47	4430.95	-886.33	40.5171567	-104.5886333	0.00	
10730.00†	90.000	359.461	6913.00	4589.20	4530.95	-887.27	40.5174312	-104.5886330	0.00	
10830.00†	90.000	359.461	6913.00	4688.92	4630.94	-888.21	40.5177056	-104.5886327	0.00	
10930.00†	90.000	359.461	6913.00	4788.65	4730.94	-889.15	40.5179801	-104.5886323	0.00	
11030.00†	90.000	359.461	6913.00	4888.37	4830.93	-890.09	40.5182546	-104.5886320	0.00	
11130.00†	90.000	359.461	6913.00	4988.10	4930.93	-891.03	40.5185291	-104.5886317	0.00	
11230.00†	90.000	359.461	6913.00	5087.82	5030.93	-891.97	40.5188036	-104.5886314	0.00	
11330.00†	90.000	359.461	6913.00	5187.55	5130.92	-892.92	40.5190781	-104.5886311	0.00	
11430.00†	90.000	359.461	6913.00	5287.27	5230.92	-893.86	40.5193525	-104.5886308	0.00	
11530.00†	90.000	359.461	6913.00	5387.00	5330.91	-894.80	40.5196270	-104.5886305	0.00	
11630.00†	90.000	359.461	6913.00	5486.72	5430.91	-895.74	40.5199015	-104.5886302	0.00	
11730.00†	90.000	359.461	6913.00	5586.45	5530.90	-896.68	40.5201760	-104.5886299	0.00	
11830.00†	90.000	359.461	6913.00	5686.17	5630.90	-897.62	40.5204505	-104.5886296	0.00	
11930.00†	90.000	359.461	6913.00	5785.90	5730.89	-898.56	40.5207250	-104.5886292	0.00	
12030.00†	90.000	359.461	6913.00	5885.62	5830.89	-899.51	40.5209995	-104.5886289	0.00	
12130.00†	90.000	359.461	6913.00	5985.35	5930.89	-900.45	40.5212739	-104.5886286	0.00	
12230.00†	90.000	359.461	6913.00	6085.07	6030.88	-901.39	40.5215484	-104.5886283	0.00	
12330.00†	90.000	359.461	6913.00	6184.80	6130.88	-902.33	40.5218229	-104.5886280	0.00	
12430.00†	90.000	359.461	6913.00	6284.52	6230.87	-903.27	40.5220974	-104.5886277	0.00	
12530.00†	90.000	359.461	6913.00	6384.25	6330.87	-904.21	40.5223719	-104.5886274	0.00	
12630.00†	90.000	359.461	6913.00	6483.97	6430.86	-905.15	40.5226464	-104.5886271	0.00	
12730.00†	90.000	359.461	6913.00	6583.70	6530.86	-906.10	40.5229208	-104.5886268	0.00	
12830.00†	90.000	359.461	6913.00	6683.42	6630.85	-907.04	40.5231953	-104.5886264	0.00	
12930.00†	90.000	359.461	6913.00	6783.15	6730.85	-907.98	40.5234698	-104.5886261	0.00	



Planned Wellpath Report

BISHOP A06-731 (REV-A.0) PWP
Page 5 of 7



REFERENCE WELLPATH IDENTIFICATION			
Operator	NOBLE ENERGY, INC	Well	BISHOP A06-731
Field	WELD COUNTY (NOBLE NAD 83 GRID)	API/Legal	
Facility	SEC.07-T06N-R64W	Wellbore	BISHOP A06-731 PWB
Slot	SLOT#22 BISHOP A06-731 (1008'FNL & 538'FEL,SEC.07)		

WELLPATH DATA (182 stations) † = interpolated, ‡ = extrapolated station										
MD [ft]	Inclination [°]	Azimuth [°]	TVD [ft]	Vert Sect [ft]	North [ft]	East [ft]	Latitude	Longitude	DLS [°/100ft]	Comments
13030.00†	90.000	359.461	6913.00	6882.87	6830.85	-908.92	40.5237443	-104.5886258	0.00	
13130.00†	90.000	359.461	6913.00	6982.60	6930.84	-909.86	40.5240188	-104.5886255	0.00	
13230.00†	90.000	359.461	6913.00	7082.33	7030.84	-910.80	40.5242933	-104.5886252	0.00	
13330.00†	90.000	359.461	6913.00	7182.05	7130.83	-911.74	40.5245677	-104.5886249	0.00	
13430.00†	90.000	359.461	6913.00	7281.78	7230.83	-912.69	40.5248422	-104.5886246	0.00	
13530.00†	90.000	359.461	6913.00	7381.50	7330.82	-913.63	40.5251167	-104.5886243	0.00	
13630.00†	90.000	359.461	6913.00	7481.23	7430.82	-914.57	40.5253912	-104.5886240	0.00	
13730.00†	90.000	359.461	6913.00	7580.95	7530.81	-915.51	40.5256657	-104.5886236	0.00	
13830.00†	90.000	359.461	6913.00	7680.68	7630.81	-916.45	40.5259402	-104.5886233	0.00	
13930.00†	90.000	359.461	6913.00	7780.40	7730.81	-917.39	40.5262146	-104.5886230	0.00	
14030.00†	90.000	359.461	6913.00	7880.13	7830.80	-918.33	40.5264891	-104.5886227	0.00	
14130.00†	90.000	359.461	6913.00	7979.85	7930.80	-919.27	40.5267636	-104.5886224	0.00	
14230.00†	90.000	359.461	6913.00	8079.58	8030.79	-920.22	40.5270381	-104.5886221	0.00	
14330.00†	90.000	359.461	6913.00	8179.30	8130.79	-921.16	40.5273126	-104.5886218	0.00	
14430.00†	90.000	359.461	6913.00	8279.03	8230.78	-922.10	40.5275871	-104.5886215	0.00	
14530.00†	90.000	359.461	6913.00	8378.75	8330.78	-923.04	40.5278615	-104.5886212	0.00	
14630.00†	90.000	359.461	6913.00	8478.48	8430.77	-923.98	40.5281360	-104.5886209	0.00	
14730.00†	90.000	359.461	6913.00	8578.20	8530.77	-924.92	40.5284105	-104.5886205	0.00	
14830.00†	90.000	359.461	6913.00	8677.93	8630.77	-925.86	40.5286850	-104.5886202	0.00	
14930.00†	90.000	359.461	6913.00	8777.65	8730.76	-926.81	40.5289595	-104.5886199	0.00	
15030.00†	90.000	359.461	6913.00	8877.38	8830.76	-927.75	40.5292340	-104.5886196	0.00	
15130.00†	90.000	359.461	6913.00	8977.10	8930.75	-928.69	40.5295084	-104.5886193	0.00	
15230.00†	90.000	359.461	6913.00	9076.83	9030.75	-929.63	40.5297829	-104.5886190	0.00	
15330.00†	90.000	359.461	6913.00	9176.55	9130.74	-930.57	40.5300574	-104.5886187	0.00	
15430.00†	90.000	359.461	6913.00	9276.28	9230.74	-931.51	40.5303319	-104.5886184	0.00	
15530.00†	90.000	359.461	6913.00	9376.01	9330.74	-932.45	40.5306064	-104.5886181	0.00	
15630.00†	90.000	359.461	6913.00	9475.73	9430.73	-933.40	40.5308809	-104.5886177	0.00	
15730.00†	90.000	359.461	6913.00	9575.46	9530.73	-934.34	40.5311553	-104.5886174	0.00	
15830.00†	90.000	359.461	6913.00	9675.18	9630.72	-935.28	40.5314298	-104.5886171	0.00	
15930.00†	90.000	359.461	6913.00	9774.91	9730.72	-936.22	40.5317043	-104.5886168	0.00	
16030.00†	90.000	359.461	6913.00	9874.63	9830.71	-937.16	40.5319788	-104.5886165	0.00	
16130.00†	90.000	359.461	6913.00	9974.36	9930.71	-938.10	40.5322533	-104.5886162	0.00	
16230.00†	90.000	359.461	6913.00	10074.08	10030.70	-939.04	40.5325277	-104.5886159	0.00	
16330.00†	90.000	359.461	6913.00	10173.81	10130.70	-939.99	40.5328022	-104.5886156	0.00	
16430.00†	90.000	359.461	6913.00	10273.53	10230.70	-940.93	40.5330767	-104.5886153	0.00	
16530.00†	90.000	359.461	6913.00	10373.26	10330.69	-941.87	40.5333512	-104.5886150	0.00	
16630.00†	90.000	359.461	6913.00	10472.98	10430.69	-942.81	40.5336257	-104.5886146	0.00	
16730.00†	90.000	359.461	6913.00	10572.71	10530.68	-943.75	40.5339002	-104.5886143	0.00	
16830.00†	90.000	359.461	6913.00	10672.43	10630.68	-944.69	40.5341746	-104.5886140	0.00	
16930.00†	90.000	359.461	6913.00	10772.16	10730.67	-945.63	40.5344491	-104.5886137	0.00	
17030.00†	90.000	359.461	6913.00	10871.88	10830.67	-946.58	40.5347236	-104.5886134	0.00	
17130.00†	90.000	359.461	6913.00	10971.61	10930.66	-947.52	40.5349981	-104.5886131	0.00	
17230.00†	90.000	359.461	6913.00	11071.33	11030.66	-948.46	40.5352726	-104.5886128	0.00	
17330.00†	90.000	359.461	6913.00	11171.06	11130.66	-949.40	40.5355471	-104.5886125	0.00	
17430.00†	90.000	359.461	6913.00	11270.78	11230.65	-950.34	40.5358215	-104.5886122	0.00	

REFERENCE WELLPATH IDENTIFICATION			
Operator	NOBLE ENERGY, INC	Well	BISHOP A06-731
Field	WELD COUNTY (NOBLE NAD 83 GRID)	API/Legal	
Facility	SEC.07-T06N-R64W	Wellbore	BISHOP A06-731 PWB
Slot	SLOT#22 BISHOP A06-731 (1008'FNL & 538'FEL,SEC.07)		

WELLPATH DATA (182 stations) † = interpolated, ‡ = extrapolated station										
MD [ft]	Inclination [°]	Azimuth [°]	TVD [ft]	Vert Sect [ft]	North [ft]	East [ft]	Latitude	Longitude	DLS [°/100ft]	Comments
17530.00†	90.000	359.461	6913.00	11370.51	11330.65	-951.28	40.5360960	-104.5886118	0.00	
17559.93	90.000	359.461	6913.00‡	11400.36	11360.57	-951.56	40.5361782	-104.5886118	0.00	BHL

HOLE & CASING SECTIONS - Ref Wellbore: BISHOP A06-731 PWB Ref Wellpath: BISHOP A06-731 (REV-A.0) PWP									
String/Diameter	Start MD [ft]	End MD [ft]	Interval [ft]	Start TVD [ft]	End TVD [ft]	Start N/S [ft]	Start E/W [ft]	End N/S [ft]	End E/W [ft]
9.625in Casing Surface	30.00	1950.00	1920.00	30.00	1950.00	0.00	0.00	0.00	0.00

TARGETS									
Name	MD [ft]	TVD [ft]	North [ft]	East [ft]	Grid East [US ft]	Grid North [US ft]	Latitude	Longitude	Shape
OGDP 1 SEC.07-T06N-R64W	N/A	1.00	150.54	112.47	3254380.72	1428262.61	40.5053800	-104.5852000	polygon
2D Polygon: dimensions not calculated									
OGDP1 SEC.06-T06N-R64W	N/A	19.00	168.97	-4139.89	3250128.51	1428281.04	40.5055500	-104.6004900	polygon
2D Polygon: dimensions not calculated									
OGDP1 SEC.31-T07N-R64W	N/A	19.00	168.97	-4139.89	3250128.51	1428281.04	40.5055500	-104.6004900	polygon
2D Polygon: dimensions not calculated									
2) BISHOP A06-731 BHL Rev-1 (200'FSL & 1452'FEL,SEC.31)	17559.93	6913.00	11360.57	-951.56	3253316.72	1439472.25	40.5361782	-104.5886118	point
1) BISHOP A06-731 LP Rev-1 (200'FSL & 1383'FEL,SEC.06)	7389.42	6913.00	1190.52	-855.82	3253412.46	1429302.55	40.5082618	-104.5886433	point

SURVEY PROGRAM - Ref Wellbore: BISHOP A06-731 PWB Ref Wellpath: BISHOP A06-731 (REV-A.0) PWP				
Start MD [ft]	End MD [ft]	Positional Uncertainty Model	Log Name/Comment	Wellbore
30.00	17559.93	OWSG MWD rev2 (MS+IFR1)		BISHOP A06-731 PWB



Planned Wellpath Report

BISHOP A06-731 (REV-A.0) PWP
Page 7 of 7



REFERENCE WELLPATH IDENTIFICATION			
Operator	NOBLE ENERGY, INC	Well	BISHOP A06-731
Field	WELD COUNTY (NOBLE NAD 83 GRID)	API/Legal	
Facility	SEC.07-T06N-R64W	Wellbore	BISHOP A06-731 PWB
Slot	SLOT#22 BISHOP A06-731 (1008'FNL & 538'FEL,SEC.07)		

DESIGN COMMENTS				
MD [ft]	Inclination [°]	Azimuth [°]	TVD [ft]	Comment
30.00	0.000	306.776	30.00	SHL
2000.00	0.000	306.776	2000.00	End of Tangent
2651.94	13.039	306.776	2646.33	Build (XS)
6476.77	13.039	306.776	6372.54	KOP
7389.42	90.000	359.461	6913.00	LP/TPZ
17559.93	90.000	359.461	6913.00	BHL