

NOBLE ENERGY, INC

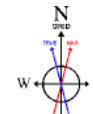
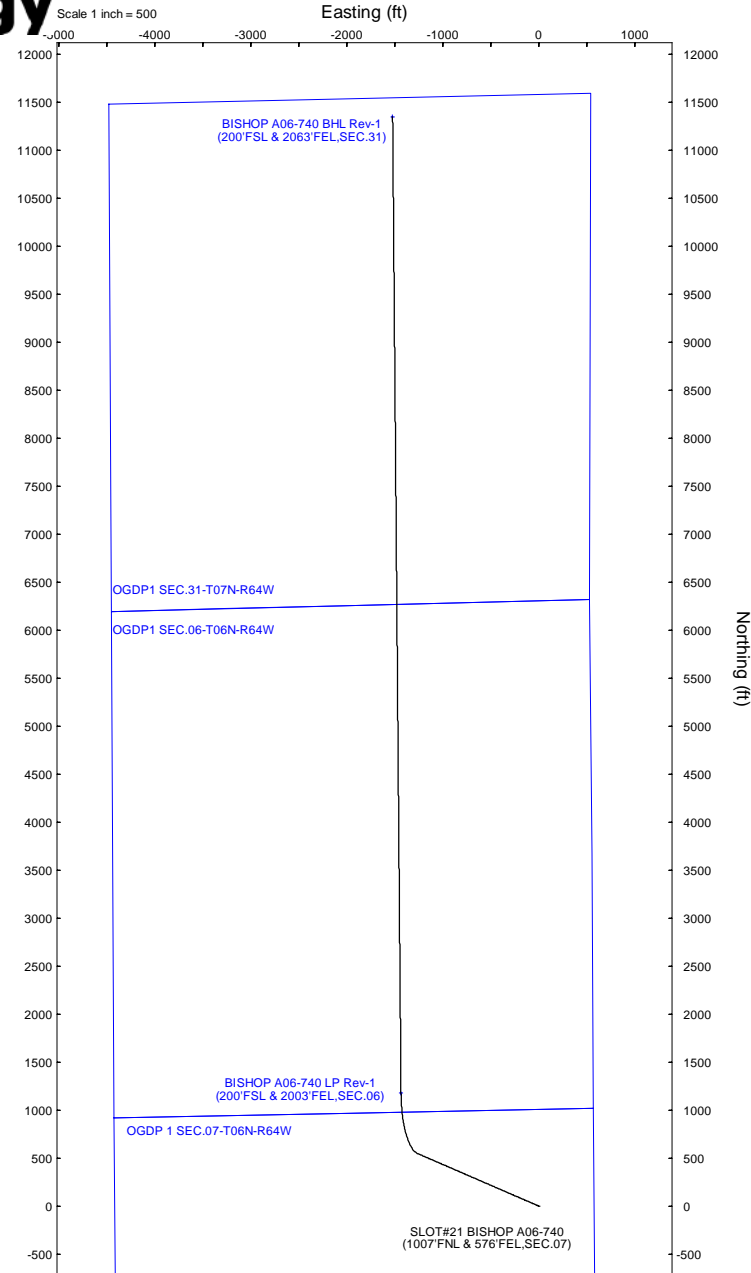
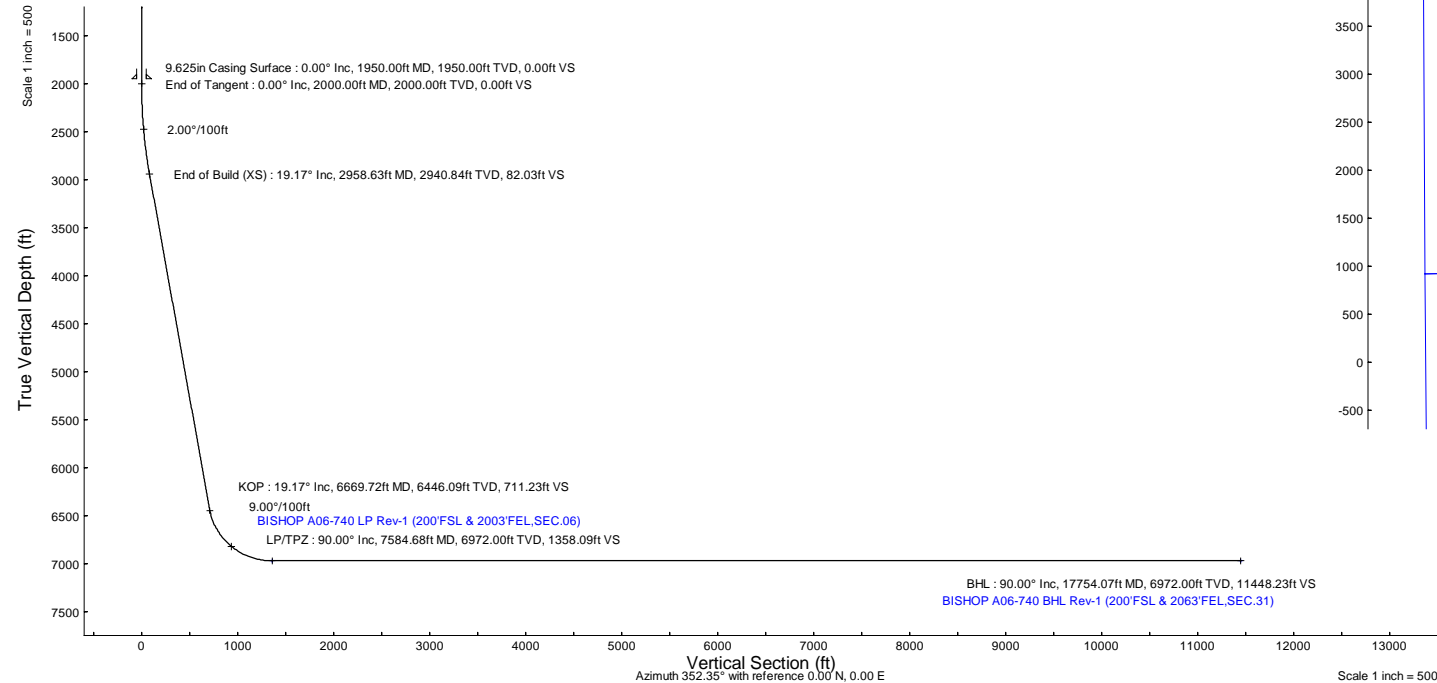
Location:	COLORADO	Slot:	SLOT#21 BISHOP A06-740 (1007°FNL & 576°FEL,SEC.07)
Field:	WELD COUNTY (NOBLE NAD 83 GRID)	Well:	BISHOP A06-740
Facility:	SEC.07-T06N-R64W	Wellbore:	BISHOP A06-740 PWB
Plot reference wellpath is BISHOP A06-740 (REV-A.0) PWP			
True vertical depths are referenced to (4742GL+30KB@4772RKB) (RKB)		Grid System: NAD83 / Lambert Colorado SP, Northern Zone (501), US feet	
Reference wellpath measured depths are referenced to (4742GL+30KB@4772RKB) (RKB)		North Reference: Grid north	
(4742GL+30KB@4772RKB) to Mean Sea Level: 4772 feet		Scale: True distance	
Mean Sea Level to Ground level (At Slot: SLOT#21 BISHOP A06-740 (1007°FNL & 576°FEL,SEC.07): 0 feet		Coordinates are in feet referenced to Slot	
Offset wellpath MDs are referenced to each path's default MD datum		Depths are in feet	
		Created by: guemaler on 2023-01-17; Database: WA_Denver	

Location Information					
Facility Name			Grid East (US ft)	Grid North (US ft)	Latitude
SEC.07-T06N-R64W			3254380.716	1428262.611	40°30'19.3680"N
Slot			Local N (ft)	Local E (ft)	Latitude
SLOT#21 BISHOP A06-740 (1007°FNL & 576°FEL,SEC.07)			-150.94	-151.40	40°30'17.8920"N
(4742GL+30KB@4772RKB) to Ground level (At Slot: SLOT#21 BISHOP A06-740 (1007°FNL & 576°FEL,SEC.07))			4772ft		
Mean Sea Level to Ground level (At Slot: SLOT#21 BISHOP A06-740 (1007°FNL & 576°FEL,SEC.07))			0ft		
(4742GL+30KB@4772RKB) to Mean Sea Level			4772ft		

Well Profile Data							
Design Comment	MD (ft)	Inc (")	Az (°)	TVD (ft)	Local N (ft)	Local E (ft)	DLS (°/100ft)
SHL	30.00	0.000	293.433	30.00	0.00	0.00	0.00
End of Tangent	2000.00	0.000	293.433	2000.00	0.00	0.00	0.00
End of Build (XS)	2958.63	19.173	293.433	2940.84	63.19	-145.79	2.00
KOP	6669.72	19.173	293.433	6446.09	547.86	-1264.06	0.00
LP/TPZ	7584.68	90.000	359.509	6972.00	1177.36	-1436.61	9.00
BHL	17754.07	90.000	359.509	6972.00	11346.37	-1523.73	0.00

Targets							
Name	MD (ft)	TVD (ft)	Local N (ft)	Local E (ft)	Grid East (US ft)	Grid North (US ft)	Latitude
OGDP 1 SEC.07-T06N-R64W	N/A	0.00	150.94	151.40	3254380.72	1428262.61	40°30'19.3680"N
OGDP1 SEC.06-T06N-R64W	N/A	18.00	169.37	-4100.96	3250128.51	1428281.04	40°30'19.9800"N
OGDP1 SEC.31-T07N-R64W	N/A	18.00	169.37	-4100.96	3250128.51	1428281.04	40°30'19.9800"N
BISHOP A06-740 BHL Rev-1 (200°FSL & 2063°FEL,SEC.31)	17754.07	6972.00	11346.37	-1523.73	3252705.65	1439457.65	40°32'10.1591"N
BISHOP A06-740 LP Rev-1 (200°FSL & 2003°FEL,SEC.06)	7584.68	6972.00	1177.36	-1436.61	3252792.77	1429288.99	40°30'29.6713"N

Survey Program					
Start MD (ft)	End MD (ft)	Tool	Model	Log Name/Comment	Wellbore
30.00	17754.07	OWSG MWD rev2	OWSG MWD rev2 (MS+IFR1)		BISHOP A06-740 PWB



BGGM (1900.0 to 2024.0) Dip: 66.71° Field: 51734.7 nT
Magnetic North is 7.44 degrees East of True North (at 1/17/2023)
Grid North is 0.59 degrees East of True North
To correct azimuth from True to Grid subtract 0.59 degrees
To correct azimuth from Magnetic to Grid add 6.85 degrees



Planned Wellpath Report
BISHOP A06-740 (REV-A.0) PWP
Page 1 of 7



REFERENCE WELLPATH IDENTIFICATION			
Operator	NOBLE ENERGY, INC	Well	BISHOP A06-740
Field	WELD COUNTY (NOBLE NAD 83 GRID)	API/Legal	
Facility	SEC.07-T06N-R64W	Wellbore	BISHOP A06-740 PWB
Slot	SLOT#21 BISHOP A06-740 (1007'FNL & 576'FEL,SEC.07)		

REPORT SETUP INFORMATION			
Projection System	NAD83 / Lambert Colorado SP, Northern Zone (501), US feet	Software System	WellArchitect® 6.0
North Reference	Grid	User	Guenaler
Scale	0.999967	Report Generated	1/17/2023 at 11:20:48 AM
Convergence at slot	0.59° East	Database	WA_Denver

WELLPATH LOCATION						
	Local coordinates		Grid coordinates		Geographic coordinates	
	North[ft]	East[ft]	Easting[US ft]	Northing[US ft]	Latitude	Longitude
Slot Location	-150.94	-151.40	3254229.32	1428111.68	40.5049700°	-104.5857500°
Facility Reference Pt			3254380.72	1428262.61	40.5053800°	-104.5852000°
Field Reference Pt			3000000.00	4454105.15	48.7761986°	-105.5000000°

WELLPATH DATUM			
Calculation method	Minimum curvature	(4742'GL+30'KB@4772'RKB) (RKB) to Facility Vertical Datum	4772.00ft
Horizontal Reference Pt	Slot	(4742'GL+30'KB@4772'RKB) (RKB) to Mean Sea Level	4772.00ft
Vertical Reference Pt	(4742'GL+30'KB@4772'RKB) (RKB)	(4742'GL+30'KB@4772'RKB) (RKB) to Ground Level at Slot (SLOT#21 BISHOP A06-740 (1007'FNL & 576'FEL,SEC.07))	4772.00ft
MD Reference Pt	(4742'GL+30'KB@4772'RKB) (RKB)	Section Origin	N 0.00, E 0.00 ft
Field Vertical Reference	Mean Sea Level	Section Azimuth	352.35°



Planned Wellpath Report
BISHOP A06-740 (REV-A.0) PWP
Page 2 of 7



REFERENCE WELLPATH IDENTIFICATION			
Operator	NOBLE ENERGY, INC	Well	BISHOP A06-740
Field	WELD COUNTY (NOBLE NAD 83 GRID)	API/Legal	
Facility	SEC.07-T06N-R64W	Wellbore	BISHOP A06-740 PWB
Slot	SLOT#21 BISHOP A06-740 (1007'FNL & 576'FEL,SEC.07)		

WELLPATH DATA (184 stations) † = interpolated, ‡ = extrapolated station										
MD [ft]	Inclination [°]	Azimuth [°]	TVD [ft]	Vert Sect [ft]	North [ft]	East [ft]	Latitude	Longitude	DLS [°/100ft]	Comments
0.00†	0.000	293.433	0.00	0.00	0.00	0.00	40.5049700	-104.5857500	0.00	
30.00	0.000	293.433	30.00	0.00	0.00	0.00	40.5049700	-104.5857500	0.00	SHL
130.00†	0.000	293.433	130.00	0.00	0.00	0.00	40.5049700	-104.5857500	0.00	
230.00†	0.000	293.433	230.00	0.00	0.00	0.00	40.5049700	-104.5857500	0.00	
330.00†	0.000	293.433	330.00	0.00	0.00	0.00	40.5049700	-104.5857500	0.00	
430.00†	0.000	293.433	430.00	0.00	0.00	0.00	40.5049700	-104.5857500	0.00	
530.00†	0.000	293.433	530.00	0.00	0.00	0.00	40.5049700	-104.5857500	0.00	
630.00†	0.000	293.433	630.00	0.00	0.00	0.00	40.5049700	-104.5857500	0.00	
730.00†	0.000	293.433	730.00	0.00	0.00	0.00	40.5049700	-104.5857500	0.00	
830.00†	0.000	293.433	830.00	0.00	0.00	0.00	40.5049700	-104.5857500	0.00	
930.00†	0.000	293.433	930.00	0.00	0.00	0.00	40.5049700	-104.5857500	0.00	
1030.00†	0.000	293.433	1030.00	0.00	0.00	0.00	40.5049700	-104.5857500	0.00	
1130.00†	0.000	293.433	1130.00	0.00	0.00	0.00	40.5049700	-104.5857500	0.00	
1230.00†	0.000	293.433	1230.00	0.00	0.00	0.00	40.5049700	-104.5857500	0.00	
1330.00†	0.000	293.433	1330.00	0.00	0.00	0.00	40.5049700	-104.5857500	0.00	
1430.00†	0.000	293.433	1430.00	0.00	0.00	0.00	40.5049700	-104.5857500	0.00	
1530.00†	0.000	293.433	1530.00	0.00	0.00	0.00	40.5049700	-104.5857500	0.00	
1630.00†	0.000	293.433	1630.00	0.00	0.00	0.00	40.5049700	-104.5857500	0.00	
1730.00†	0.000	293.433	1730.00	0.00	0.00	0.00	40.5049700	-104.5857500	0.00	
1830.00†	0.000	293.433	1830.00	0.00	0.00	0.00	40.5049700	-104.5857500	0.00	
1930.00†	0.000	293.433	1930.00	0.00	0.00	0.00	40.5049700	-104.5857500	0.00	
2000.00	0.000	293.433	2000.00	0.00	0.00	0.00	40.5049700	-104.5857500	0.00	End of Tangent
2030.00†	0.600	293.433	2030.00	0.08	0.06	-0.14	40.5049702	-104.5857505	2.00	
2130.00†	2.600	293.433	2129.96	1.52	1.17	-2.71	40.5049733	-104.5857597	2.00	
2230.00†	4.600	293.433	2229.75	4.76	3.67	-8.47	40.5049803	-104.5857803	2.00	
2330.00†	6.600	293.433	2329.27	9.80	7.55	-17.42	40.5049912	-104.5858124	2.00	
2430.00†	8.600	293.433	2428.39	16.63	12.81	-29.55	40.5050060	-104.5858558	2.00	
2530.00†	10.600	293.433	2526.98	25.24	19.44	-44.85	40.5050246	-104.5859106	2.00	
2630.00†	12.600	293.433	2624.93	35.62	27.44	-63.30	40.5050471	-104.5859766	2.00	
2730.00†	14.600	293.433	2722.13	47.76	36.79	-84.88	40.5050734	-104.5860538	2.00	
2830.00†	16.600	293.433	2818.44	61.64	47.48	-109.55	40.5051034	-104.5861422	2.00	
2930.00†	18.600	293.433	2913.75	77.25	59.50	-137.29	40.5051372	-104.5862415	2.00	
2958.63	19.173	293.433	2940.84	82.03	63.19	-145.79	40.5051476	-104.5862719	2.00	End of Build (XS)
3030.00†	19.173	293.433	3008.25	94.13	72.51	-167.30	40.5051738	-104.5863489	0.00	
3130.00†	19.173	293.433	3102.70	111.09	85.57	-197.43	40.5052105	-104.5864568	0.00	
3230.00†	19.173	293.433	3197.16	128.04	98.63	-227.57	40.5052472	-104.5865646	0.00	
3330.00†	19.173	293.433	3291.61	145.00	111.69	-257.70	40.5052838	-104.5866725	0.00	
3430.00†	19.173	293.433	3386.06	161.95	124.75	-287.83	40.5053205	-104.5867804	0.00	
3530.00†	19.173	293.433	3480.52	178.91	137.81	-317.97	40.5053572	-104.5868882	0.00	
3630.00†	19.173	293.433	3574.97	195.86	150.87	-348.10	40.5053939	-104.5869961	0.00	
3730.00†	19.173	293.433	3669.42	212.81	163.93	-378.23	40.5054306	-104.5871040	0.00	
3830.00†	19.173	293.433	3763.88	229.77	176.99	-408.36	40.5054673	-104.5872118	0.00	
3930.00†	19.173	293.433	3858.33	246.72	190.05	-438.50	40.5055040	-104.5873197	0.00	
4030.00†	19.173	293.433	3952.78	263.68	203.11	-468.63	40.5055407	-104.5874276	0.00	
4130.00†	19.173	293.433	4047.24	280.63	216.17	-498.76	40.5055774	-104.5875354	0.00	



Planned Wellpath Report
BISHOP A06-740 (REV-A.0) PWP
Page 3 of 7



REFERENCE WELLPATH IDENTIFICATION			
Operator	NOBLE ENERGY, INC	Well	BISHOP A06-740
Field	WELD COUNTY (NOBLE NAD 83 GRID)	API/Legal	
Facility	SEC.07-T06N-R64W	Wellbore	BISHOP A06-740 PWB
Slot	SLOT#21 BISHOP A06-740 (1007'FNL & 576'FEL,SEC.07)		

WELLPATH DATA (184 stations) † = interpolated, ‡ = extrapolated station										
MD [ft]	Inclination [°]	Azimuth [°]	TVD [ft]	Vert Sect [ft]	North [ft]	East [ft]	Latitude	Longitude	DLS [°/100ft]	Comments
4230.00†	19.173	293.433	4141.69	297.59	229.23	-528.90	40.5056141	-104.5876433	0.00	
4330.00†	19.173	293.433	4236.14	314.54	242.29	-559.03	40.5056508	-104.5877512	0.00	
4430.00†	19.173	293.433	4330.60	331.50	255.35	-589.16	40.5056875	-104.5878591	0.00	
4530.00†	19.173	293.433	4425.05	348.45	268.41	-619.30	40.5057242	-104.5879669	0.00	
4630.00†	19.173	293.433	4519.50	365.41	281.47	-649.43	40.5057609	-104.5880748	0.00	
4730.00†	19.173	293.433	4613.96	382.36	294.53	-679.56	40.5057976	-104.5881827	0.00	
4830.00†	19.173	293.433	4708.41	399.31	307.59	-709.69	40.5058343	-104.5882905	0.00	
4930.00†	19.173	293.433	4802.86	416.27	320.65	-739.83	40.5058710	-104.5883984	0.00	
5030.00†	19.173	293.433	4897.32	433.22	333.71	-769.96	40.5059077	-104.5885063	0.00	
5130.00†	19.173	293.433	4991.77	450.18	346.77	-800.09	40.5059444	-104.5886141	0.00	
5230.00†	19.173	293.433	5086.22	467.13	359.83	-830.23	40.5059811	-104.5887220	0.00	
5330.00†	19.173	293.433	5180.68	484.09	372.89	-860.36	40.5060178	-104.5888299	0.00	
5430.00†	19.173	293.433	5275.13	501.04	385.95	-890.49	40.5060545	-104.5889378	0.00	
5530.00†	19.173	293.433	5369.59	518.00	399.01	-920.63	40.5060912	-104.5890456	0.00	
5630.00†	19.173	293.433	5464.04	534.95	412.07	-950.76	40.5061279	-104.5891535	0.00	
5730.00†	19.173	293.433	5558.49	551.91	425.13	-980.89	40.5061646	-104.5892614	0.00	
5830.00†	19.173	293.433	5652.95	568.86	438.19	-1011.02	40.5062013	-104.5893692	0.00	
5930.00†	19.173	293.433	5747.40	585.81	451.25	-1041.16	40.5062380	-104.5894771	0.00	
6030.00†	19.173	293.433	5841.85	602.77	464.31	-1071.29	40.5062747	-104.5895850	0.00	
6130.00†	19.173	293.433	5936.31	619.72	477.37	-1101.42	40.5063114	-104.5896929	0.00	
6230.00†	19.173	293.433	6030.76	636.68	490.43	-1131.56	40.5063480	-104.5898007	0.00	
6330.00†	19.173	293.433	6125.21	653.63	503.49	-1161.69	40.5063847	-104.5899086	0.00	
6430.00†	19.173	293.433	6219.67	670.59	516.55	-1191.82	40.5064214	-104.5900165	0.00	
6530.00†	19.173	293.433	6314.12	687.54	529.61	-1221.95	40.5064581	-104.5901243	0.00	
6630.00†	19.173	293.433	6408.57	704.50	542.68	-1252.09	40.5064948	-104.5902322	0.00	
6669.72	19.173	293.433	6446.09	711.23	547.86	-1264.06	40.5065094	-104.5902751	0.00	KOP
6730.00†	21.828	306.996	6502.58	724.23	558.55	-1282.10	40.5065392	-104.5903396	9.00	
6830.00†	27.977	322.759	6593.34	757.76	588.47	-1311.21	40.5066222	-104.5904431	9.00	
6930.00†	35.291	332.828	6678.48	805.48	632.94	-1338.65	40.5067450	-104.5905401	9.00	
7030.00†	43.179	339.711	6755.91	866.21	690.85	-1363.76	40.5069047	-104.5906283	9.00	
7130.00†	51.373	344.797	6823.72	938.47	760.77	-1385.91	40.5070972	-104.5907054	9.00	
7230.00†	59.741	348.823	6880.25	1020.46	841.00	-1404.56	40.5073179	-104.5907695	9.00	
7330.00†	68.212	352.210	6924.09	1110.18	929.55	-1419.26	40.5075614	-104.5908191	9.00	
7430.00†	76.745	355.215	6954.18	1205.41	1024.25	-1429.63	40.5078216	-104.5908529	9.00	
7530.00†	85.310	358.015	6969.76	1303.81	1122.75	-1435.43	40.5080921	-104.5908701	9.00	
7584.68	90.000	359.509	6972.00 ¹	1358.09	1177.36	-1436.61	40.5082420	-104.5908723	9.00	LP/TPZ
7630.00†	90.000	359.509	6972.00	1403.05	1222.67	-1436.99	40.5083664	-104.5908720	0.00	
7730.00†	90.000	359.509	6972.00	1502.27	1322.67	-1437.85	40.5086409	-104.5908714	0.00	
7830.00†	90.000	359.509	6972.00	1601.50	1422.66	-1438.71	40.5089154	-104.5908708	0.00	
7930.00†	90.000	359.509	6972.00	1700.72	1522.66	-1439.56	40.5091899	-104.5908702	0.00	
8030.00†	90.000	359.509	6972.00	1799.94	1622.66	-1440.42	40.5094644	-104.5908696	0.00	
8130.00†	90.000	359.509	6972.00	1899.16	1722.65	-1441.28	40.5097388	-104.5908690	0.00	
8230.00†	90.000	359.509	6972.00	1998.38	1822.65	-1442.13	40.5100133	-104.5908684	0.00	
8330.00†	90.000	359.509	6972.00	2097.60	1922.65	-1442.99	40.5102878	-104.5908678	0.00	
8430.00†	90.000	359.509	6972.00	2196.82	2022.64	-1443.85	40.5105623	-104.5908672	0.00	



Planned Wellpath Report
BISHOP A06-740 (REV-A.0) PWP
Page 4 of 7



REFERENCE WELLPATH IDENTIFICATION			
Operator	NOBLE ENERGY, INC	Well	BISHOP A06-740
Field	WELD COUNTY (NOBLE NAD 83 GRID)	API/Legal	
Facility	SEC.07-T06N-R64W	Wellbore	BISHOP A06-740 PWB
Slot	SLOT#21 BISHOP A06-740 (1007'FNL & 576'FEL,SEC.07)		

WELLPATH DATA (184 stations) † = interpolated, ‡ = extrapolated station										
MD [ft]	Inclination [°]	Azimuth [°]	TVD [ft]	Vert Sect [ft]	North [ft]	East [ft]	Latitude	Longitude	DLS [°/100ft]	Comments
8530.00†	90.000	359.509	6972.00	2296.04	2122.64	-1444.70	40.5108368	-104.5908666	0.00	
8630.00†	90.000	359.509	6972.00	2395.26	2222.64	-1445.56	40.5111113	-104.5908660	0.00	
8730.00†	90.000	359.509	6972.00	2494.48	2322.63	-1446.42	40.5113857	-104.5908654	0.00	
8830.00†	90.000	359.509	6972.00	2593.70	2422.63	-1447.27	40.5116602	-104.5908648	0.00	
8930.00†	90.000	359.509	6972.00	2692.92	2522.62	-1448.13	40.5119347	-104.5908642	0.00	
9030.00†	90.000	359.509	6972.00	2792.14	2622.62	-1448.99	40.5122092	-104.5908636	0.00	
9130.00†	90.000	359.509	6972.00	2891.36	2722.62	-1449.84	40.5124837	-104.5908630	0.00	
9230.00†	90.000	359.509	6972.00	2990.58	2822.61	-1450.70	40.5127582	-104.5908623	0.00	
9330.00†	90.000	359.509	6972.00	3089.81	2922.61	-1451.56	40.5130327	-104.5908617	0.00	
9430.00†	90.000	359.509	6972.00	3189.03	3022.61	-1452.41	40.5133071	-104.5908611	0.00	
9530.00†	90.000	359.509	6972.00	3288.25	3122.60	-1453.27	40.5135816	-104.5908605	0.00	
9630.00†	90.000	359.509	6972.00	3387.47	3222.60	-1454.13	40.5138561	-104.5908599	0.00	
9730.00†	90.000	359.509	6972.00	3486.69	3322.60	-1454.98	40.5141306	-104.5908593	0.00	
9830.00†	90.000	359.509	6972.00	3585.91	3422.59	-1455.84	40.5144051	-104.5908587	0.00	
9930.00†	90.000	359.509	6972.00	3685.13	3522.59	-1456.70	40.5146796	-104.5908581	0.00	
10030.00†	90.000	359.509	6972.00	3784.35	3622.58	-1457.55	40.5149540	-104.5908575	0.00	
10130.00†	90.000	359.509	6972.00	3883.57	3722.58	-1458.41	40.5152285	-104.5908569	0.00	
10230.00†	90.000	359.509	6972.00	3982.79	3822.58	-1459.27	40.5155030	-104.5908563	0.00	
10330.00†	90.000	359.509	6972.00	4082.01	3922.57	-1460.12	40.5157775	-104.5908557	0.00	
10430.00†	90.000	359.509	6972.00	4181.23	4022.57	-1460.98	40.5160520	-104.5908551	0.00	
10530.00†	90.000	359.509	6972.00	4280.45	4122.57	-1461.84	40.5163265	-104.5908545	0.00	
10630.00†	90.000	359.509	6972.00	4379.67	4222.56	-1462.70	40.5166009	-104.5908539	0.00	
10730.00†	90.000	359.509	6972.00	4478.90	4322.56	-1463.55	40.5168754	-104.5908533	0.00	
10830.00†	90.000	359.509	6972.00	4578.12	4422.55	-1464.41	40.5171499	-104.5908526	0.00	
10930.00†	90.000	359.509	6972.00	4677.34	4522.55	-1465.27	40.5174244	-104.5908520	0.00	
11030.00†	90.000	359.509	6972.00	4776.56	4622.55	-1466.12	40.5176989	-104.5908514	0.00	
11130.00†	90.000	359.509	6972.00	4875.78	4722.54	-1466.98	40.5179734	-104.5908508	0.00	
11230.00†	90.000	359.509	6972.00	4975.00	4822.54	-1467.84	40.5182478	-104.5908502	0.00	
11330.00†	90.000	359.509	6972.00	5074.22	4922.54	-1468.69	40.5185223	-104.5908496	0.00	
11430.00†	90.000	359.509	6972.00	5173.44	5022.53	-1469.55	40.5187968	-104.5908490	0.00	
11530.00†	90.000	359.509	6972.00	5272.66	5122.53	-1470.41	40.5190713	-104.5908484	0.00	
11630.00†	90.000	359.509	6972.00	5371.88	5222.53	-1471.26	40.5193458	-104.5908478	0.00	
11730.00†	90.000	359.509	6972.00	5471.10	5322.52	-1472.12	40.5196203	-104.5908472	0.00	
11830.00†	90.000	359.509	6972.00	5570.32	5422.52	-1472.98	40.5198947	-104.5908466	0.00	
11930.00†	90.000	359.509	6972.00	5669.54	5522.51	-1473.83	40.5201692	-104.5908460	0.00	
12030.00†	90.000	359.509	6972.00	5768.76	5622.51	-1474.69	40.5204437	-104.5908454	0.00	
12130.00†	90.000	359.509	6972.00	5867.98	5722.51	-1475.55	40.5207182	-104.5908448	0.00	
12230.00†	90.000	359.509	6972.00	5967.21	5822.50	-1476.40	40.5209927	-104.5908442	0.00	
12330.00†	90.000	359.509	6972.00	6066.43	5922.50	-1477.26	40.5212672	-104.5908436	0.00	
12430.00†	90.000	359.509	6972.00	6165.65	6022.50	-1478.12	40.5215416	-104.5908429	0.00	
12530.00†	90.000	359.509	6972.00	6264.87	6122.49	-1478.97	40.5218161	-104.5908423	0.00	
12630.00†	90.000	359.509	6972.00	6364.09	6222.49	-1479.83	40.5220906	-104.5908417	0.00	
12730.00†	90.000	359.509	6972.00	6463.31	6322.48	-1480.69	40.5223651	-104.5908411	0.00	
12830.00†	90.000	359.509	6972.00	6562.53	6422.48	-1481.54	40.5226396	-104.5908405	0.00	
12930.00†	90.000	359.509	6972.00	6661.75	6522.48	-1482.40	40.5229141	-104.5908399	0.00	



Planned Wellpath Report

BISHOP A06-740 (REV-A.0) PWP

Page 5 of 7



REFERENCE WELLPATH IDENTIFICATION			
Operator	NOBLE ENERGY, INC	Well	BISHOP A06-740
Field	WELD COUNTY (NOBLE NAD 83 GRID)	API/Legal	
Facility	SEC.07-T06N-R64W	Wellbore	BISHOP A06-740 PWB
Slot	SLOT#21 BISHOP A06-740 (1007'FNL & 576'FEL,SEC.07)		

WELLPATH DATA (184 stations) † = interpolated, ‡ = extrapolated station										
MD [ft]	Inclination [°]	Azimuth [°]	TVD [ft]	Vert Sect [ft]	North [ft]	East [ft]	Latitude	Longitude	DLS [°/100ft]	Comments
13030.00†	90.000	359.509	6972.00	6760.97	6622.47	-1483.26	40.5231885	-104.5908393	0.00	
13130.00†	90.000	359.509	6972.00	6860.19	6722.47	-1484.11	40.5234630	-104.5908387	0.00	
13230.00†	90.000	359.509	6972.00	6959.41	6822.47	-1484.97	40.5237375	-104.5908381	0.00	
13330.00†	90.000	359.509	6972.00	7058.63	6922.46	-1485.83	40.5240120	-104.5908375	0.00	
13430.00†	90.000	359.509	6972.00	7157.85	7022.46	-1486.68	40.5242865	-104.5908369	0.00	
13530.00†	90.000	359.509	6972.00	7257.07	7122.46	-1487.54	40.5245610	-104.5908363	0.00	
13630.00†	90.000	359.509	6972.00	7356.30	7222.45	-1488.40	40.5248354	-104.5908357	0.00	
13730.00†	90.000	359.509	6972.00	7455.52	7322.45	-1489.25	40.5251099	-104.5908351	0.00	
13830.00†	90.000	359.509	6972.00	7554.74	7422.44	-1490.11	40.5253844	-104.5908345	0.00	
13930.00†	90.000	359.509	6972.00	7653.96	7522.44	-1490.97	40.5256589	-104.5908339	0.00	
14030.00†	90.000	359.509	6972.00	7753.18	7622.44	-1491.82	40.5259334	-104.5908332	0.00	
14130.00†	90.000	359.509	6972.00	7852.40	7722.43	-1492.68	40.5262079	-104.5908326	0.00	
14230.00†	90.000	359.509	6972.00	7951.62	7822.43	-1493.54	40.5264823	-104.5908320	0.00	
14330.00†	90.000	359.509	6972.00	8050.84	7922.43	-1494.39	40.5267568	-104.5908314	0.00	
14430.00†	90.000	359.509	6972.00	8150.06	8022.42	-1495.25	40.5270313	-104.5908308	0.00	
14530.00†	90.000	359.509	6972.00	8249.28	8122.42	-1496.11	40.5273058	-104.5908302	0.00	
14630.00†	90.000	359.509	6972.00	8348.50	8222.42	-1496.96	40.5275803	-104.5908296	0.00	
14730.00†	90.000	359.509	6972.00	8447.72	8322.41	-1497.82	40.5278548	-104.5908290	0.00	
14830.00†	90.000	359.509	6972.00	8546.94	8422.41	-1498.68	40.5281292	-104.5908284	0.00	
14930.00†	90.000	359.509	6972.00	8646.16	8522.40	-1499.53	40.5284037	-104.5908278	0.00	
15030.00†	90.000	359.509	6972.00	8745.38	8622.40	-1500.39	40.5286782	-104.5908272	0.00	
15130.00†	90.000	359.509	6972.00	8844.61	8722.40	-1501.25	40.5289527	-104.5908266	0.00	
15230.00†	90.000	359.509	6972.00	8943.83	8822.39	-1502.10	40.5292272	-104.5908260	0.00	
15330.00†	90.000	359.509	6972.00	9043.05	8922.39	-1502.96	40.5295017	-104.5908254	0.00	
15430.00†	90.000	359.509	6972.00	9142.27	9022.39	-1503.82	40.5297761	-104.5908248	0.00	
15530.00†	90.000	359.509	6972.00	9241.49	9122.38	-1504.67	40.5300506	-104.5908242	0.00	
15630.00†	90.000	359.509	6972.00	9340.71	9222.38	-1505.53	40.5303251	-104.5908235	0.00	
15730.00†	90.000	359.509	6972.00	9439.93	9322.37	-1506.39	40.5305996	-104.5908229	0.00	
15830.00†	90.000	359.509	6972.00	9539.15	9422.37	-1507.24	40.5308741	-104.5908223	0.00	
15930.00†	90.000	359.509	6972.00	9638.37	9522.37	-1508.10	40.5311486	-104.5908217	0.00	
16030.00†	90.000	359.509	6972.00	9737.59	9622.36	-1508.96	40.5314230	-104.5908211	0.00	
16130.00†	90.000	359.509	6972.00	9836.81	9722.36	-1509.81	40.5316975	-104.5908205	0.00	
16230.00†	90.000	359.509	6972.00	9936.03	9822.36	-1510.67	40.5319720	-104.5908199	0.00	
16330.00†	90.000	359.509	6972.00	10035.25	9922.35	-1511.53	40.5322465	-104.5908193	0.00	
16430.00†	90.000	359.509	6972.00	10134.47	10022.35	-1512.38	40.5325210	-104.5908187	0.00	
16530.00†	90.000	359.509	6972.00	10233.70	10122.35	-1513.24	40.5327955	-104.5908181	0.00	
16630.00†	90.000	359.509	6972.00	10332.92	10222.34	-1514.10	40.5330699	-104.5908175	0.00	
16730.00†	90.000	359.509	6972.00	10432.14	10322.34	-1514.95	40.5333444	-104.5908169	0.00	
16830.00†	90.000	359.509	6972.00	10531.36	10422.33	-1515.81	40.5336189	-104.5908163	0.00	
16930.00†	90.000	359.509	6972.00	10630.58	10522.33	-1516.67	40.5338934	-104.5908157	0.00	
17030.00†	90.000	359.509	6972.00	10729.80	10622.33	-1517.52	40.5341679	-104.5908151	0.00	
17130.00†	90.000	359.509	6972.00	10829.02	10722.32	-1518.38	40.5344423	-104.5908144	0.00	
17230.00†	90.000	359.509	6972.00	10928.24	10822.32	-1519.24	40.5347168	-104.5908138	0.00	
17330.00†	90.000	359.509	6972.00	11027.46	10922.32	-1520.09	40.5349913	-104.5908132	0.00	
17430.00†	90.000	359.509	6972.00	11126.68	11022.31	-1520.95	40.5352658	-104.5908126	0.00	



Planned Wellpath Report

BISHOP A06-740 (REV-A.0) PWP

Page 6 of 7



REFERENCE WELLPATH IDENTIFICATION			
Operator	NOBLE ENERGY, INC	Well	BISHOP A06-740
Field	WELD COUNTY (NOBLE NAD 83 GRID)	API/Legal	
Facility	SEC.07-T06N-R64W	Wellbore	BISHOP A06-740 PWB
Slot	SLOT#21 BISHOP A06-740 (1007'FNL & 576'FEL,SEC.07)		

WELLPATH DATA (184 stations) † = interpolated, ‡ = extrapolated station										
MD [ft]	Inclination [°]	Azimuth [°]	TVD [ft]	Vert Sect [ft]	North [ft]	East [ft]	Latitude	Longitude	DLS [°/100ft]	Comments
17530.00†	90.000	359.509	6972.00	11225.90	11122.31	-1521.81	40.5355403	-104.5908120	0.00	
17630.00†	90.000	359.509	6972.00	11325.12	11222.31	-1522.66	40.5358148	-104.5908114	0.00	
17730.00†	90.000	359.509	6972.00	11424.34	11322.30	-1523.52	40.5360892	-104.5908108	0.00	
17754.07	90.000	359.509	6972.00 ²	11448.23	11346.37	-1523.73	40.5361553	-104.5908107	0.00	BHL

HOLE & CASING SECTIONS - Ref Wellbore: BISHOP A06-740 PWB Ref Wellpath: BISHOP A06-740 (REV-A.0) PWP									
String/Diameter	Start MD [ft]	End MD [ft]	Interval [ft]	Start TVD [ft]	End TVD [ft]	Start N/S [ft]	Start E/W [ft]	End N/S [ft]	End E/W [ft]
9.625in Casing Surface	30.00	1950.00	1920.00	30.00	1950.00	0.00	0.00	0.00	0.00

TARGETS									
Name	MD [ft]	TVD [ft]	North [ft]	East [ft]	Grid East [US ft]	Grid North [US ft]	Latitude	Longitude	Shape
OGDP 1 SEC.07-T06N-R64W	N/A	0.00	150.94	151.40	3254380.72	1428262.61	40.5053800	-104.5852000	polygon
	2D Polygon: dimensions not calculated								
OGDP1 SEC.06-T06N-R64W	N/A	18.00	169.37	-4100.96	3250128.51	1428281.04	40.5055500	-104.6004900	polygon
	2D Polygon: dimensions not calculated								
OGDP1 SEC.31-T07N-R64W	N/A	18.00	169.37	-4100.96	3250128.51	1428281.04	40.5055500	-104.6004900	polygon
	2D Polygon: dimensions not calculated								
2) BISHOP A06-740 BHL Rev-1 (200'FSL & 2063'FEL,SEC.31)	17754.07	6972.00	11346.37	-1523.73	3252705.65	1439457.65	40.5361553	-104.5908107	point
1) BISHOP A06-740 LP Rev-1 (200'FSL & 2003'FEL,SEC.06)	7584.68	6972.00	1177.36	-1436.61	3252792.77	1429288.99	40.5082420	-104.5908723	point

SURVEY PROGRAM - Ref Wellbore: BISHOP A06-740 PWB Ref Wellpath: BISHOP A06-740 (REV-A.0) PWP				
Start MD [ft]	End MD [ft]	Positional Uncertainty Model	Log Name/Comment	Wellbore
30.00	17754.07	OWSG MWD rev2 (MS+IFR1)		BISHOP A06-740 PWB



Planned Wellpath Report

BISHOP A06-740 (REV-A.0) PWP

Page 7 of 7



REFERENCE WELLPATH IDENTIFICATION			
Operator	NOBLE ENERGY, INC	Well	BISHOP A06-740
Field	WELD COUNTY (NOBLE NAD 83 GRID)	API/Legal	
Facility	SEC.07-T06N-R64W	Wellbore	BISHOP A06-740 PWB
Slot	SLOT#21 BISHOP A06-740 (1007'FNL & 576'FEL,SEC.07)		

DESIGN COMMENTS				
MD [ft]	Inclination [°]	Azimuth [°]	TVD [ft]	Comment
30.00	0.000	293.433	30.00	SHL
2000.00	0.000	293.433	2000.00	End of Tangent
2958.63	19.173	293.433	2940.84	End of Build (XS)
6669.72	19.173	293.433	6446.09	KOP
7584.68	90.000	359.509	6972.00	LP/TPZ
17754.07	90.000	359.509	6972.00	BHL