

Construction and Stormwater Inspection

Date: 01/17/2023

Operator: ST CROIX OPERATING INC - 81490

Location ID: 474453

Inspection Document #: 696105682

Washington County, CO

NESW Section 22 T2N R49W

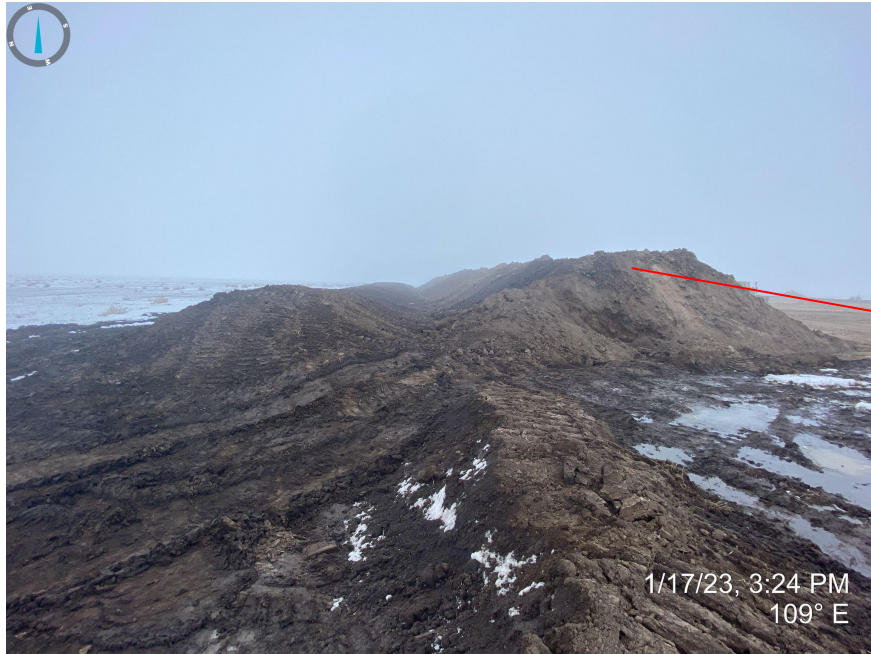
Dylan Edwardson
Reclamation Specialist, COGCC



COLORADO
Oil & Gas Conservation
Commission

Department of Natural Resources

Inspection Photos
Location Name: Alice Seedorf 1
Location ID: 474453



Photos 1 & 2. Facing east from the sediment trap (photo 1) and on top of topsoil stockpile (photo 2). The recently salvaged topsoil stockpile has been removed from the location and placed at the northern portion of the location. The new topsoil stockpile requires stabilization to prevent wind and water erosion.

Inspection Photos
Location Name: Alice Seedorf 1
Location ID: 474453



Photos 3 & 4. Facing east from the southern portion of the topsoil stockpile (photo 3) and north from the middle of the stockpile (photo 4). Photo illustrates that some temporary stabilization efforts have occurred with evidence of equipment tracking. The entire stockpile will need to be protected from wind and water erosion.

Inspection Photos
Location Name: Alice Seedorf 1
Location ID: 474453



Photo 5. Facing east from the top of the new topsoil stockpile. Photo illustrates (red outline) that part of the perimeter berm has been uninstalled and will need to be re-installed to prevent sediment laden stormwater from exiting off location.

Inspection Photos
Location Name: Alice Seedorf 1
Location ID: 474453



Photo 6. Facing northeast towards the northeast corner of the location. Photo illustrates that portions of the perimeter berm/BMP are comprised of unconsolidated material and not properly stabilized.

Inspection Photos
Location Name: Alice Seedorf 1
Location ID: 474453



Photos 7 & 8. Facing north (photo 7) and west (photo 8) from the southeast corner of the location. Photo illustrates that portions of the perimeter berm/BMP are comprised of unconsolidated material and not properly stabilized.

Inspection Photos
Location Name: Alice Seedorf 1
Location ID: 474453



Photos 9 & 10. Facing east (photo 9) and north (photo 10) from the southwestern portion of the location. Photo illustrates that portions of the perimeter berm/BMP are comprised of unconsolidated material and not properly stabilized.

Inspection Photos
Location Name: Alice Seedorf 1
Location ID: 474453



Photo 11. Facing north near the northwest corner of the location. Photo illustrates that portions of the perimeter berm/BMP are comprised of unconsolidated material and not properly stabilized.

Inspection Photos
Location Name: Alice Seedorf 1
Location ID: 474453



Photo 12. Facing northwest from the northwest corner of the location. Photo illustrates that the sediment trap is comprised of unconsolidated material and is not properly stabilized.

Inspection Photos
Location Name: Alice Seedorf 1
Location ID: 474453



Photo 13 & 14. Photo 13 (left) taken on a 01/13/2023 inspection illustrating that several inches of topsoil remained on location; a corrective action required the operator to remove all topsoil on location. Photo 14 (right) taken 01/17/2023 illustrating that the operator has complied with the corrective action to remove the remainder of the topsoil layer/horizon.