

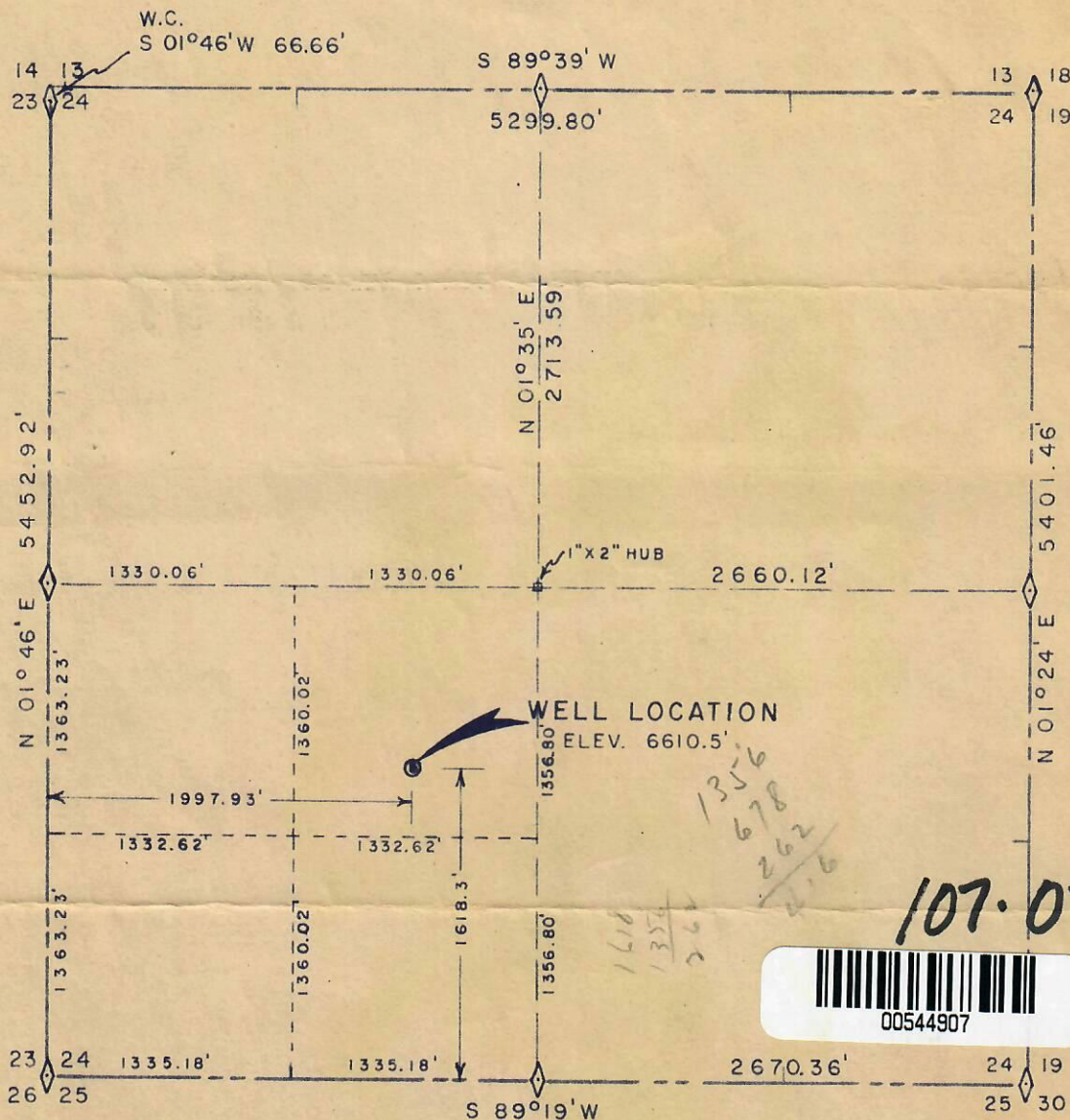


99999999

WELL LOCATION

NE 1/4 SW 1/4 SECTION 24
T 6 N R 86 W 6TH P.M.

CONSERVATION COMMISSION



Scale 1"=1000'



00544907

107-05067

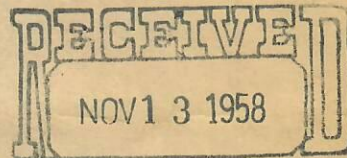
NOTE: Elevations referred to U. S. G. S. datum.

Reference Points:

	Distance	Elevation
North -	100'	6605.1'
South -	200'	6614.3'
East -	185'	6605.2'
West -	200'	6619.1'

Richard J. Mandeville, do hereby certify that this plot was plotted from notes of a field survey made under my supervision on August 22, 1958

Richard J. Mandeville
Registered Engineer & Land Surveyor



OIL & GAS
CONSERVATION COMMISSION

WESTERN ENGINEERS
WELL LOCATION
TENN. GAS TRANSMISSION CO.
ROCKY MOUNTAIN FUEL &
SUPPLY COLO. 481
ROUTT COUNTY, COLORADO

SURVEYED - W.F.O.
DRAWN - E.B.F.

GRAND JCT., COLO.

8/25/58