

T4S, R96W, 6th P.M.

Caerus Oil & Gas LLC

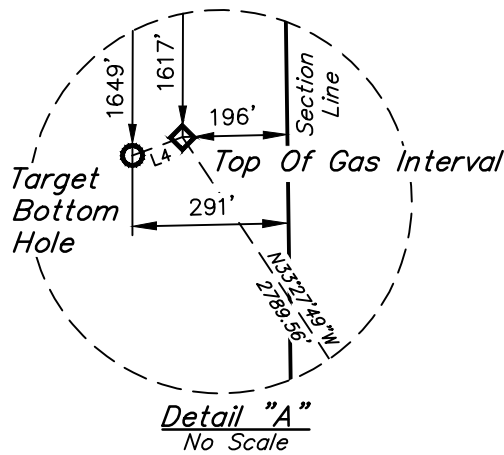
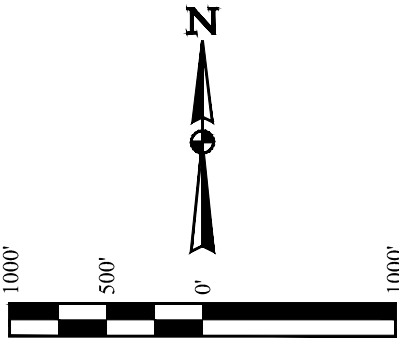
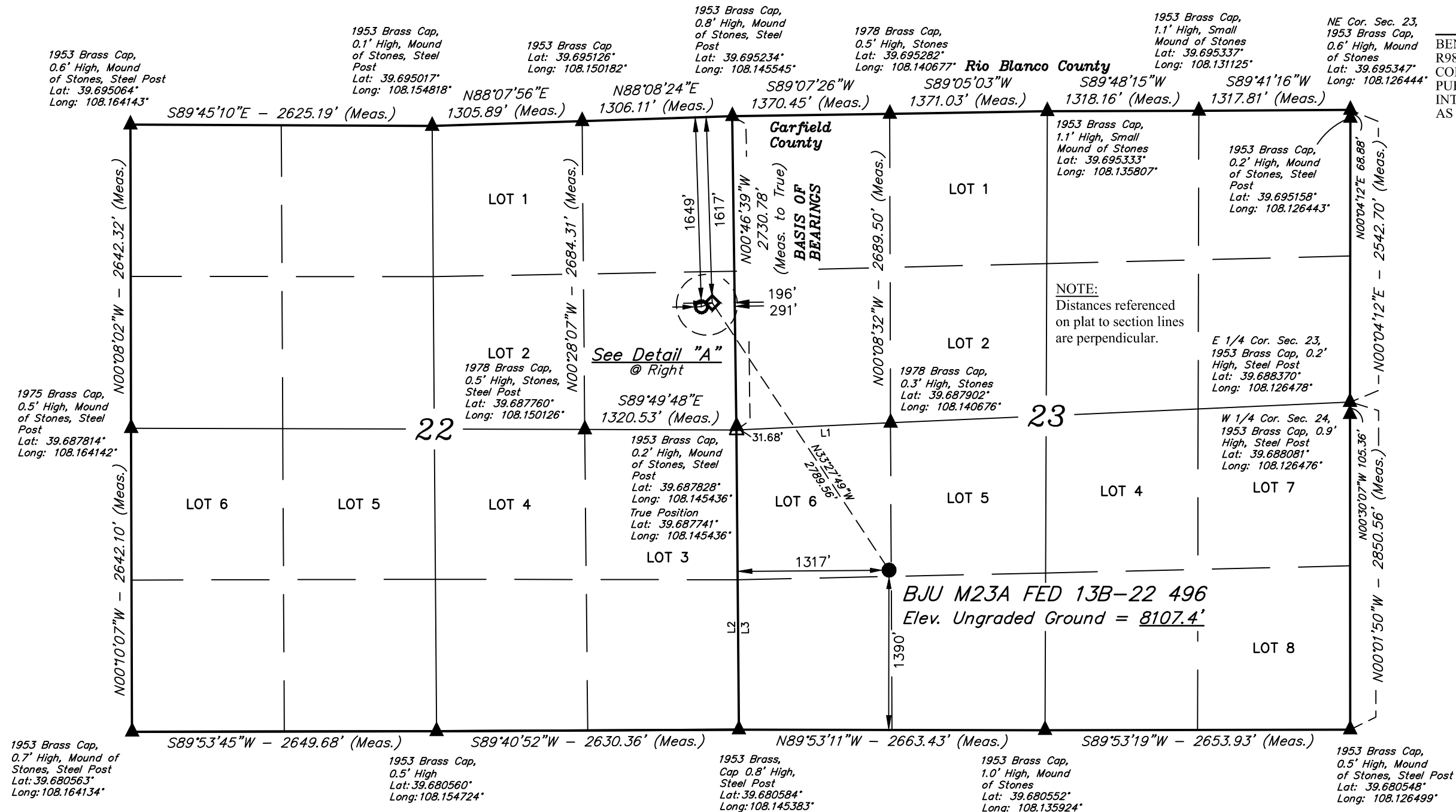
BJU M23A FED 13B-22 496
LOT 6, SECTION 23, T4S, R96W, 6th P.M.
GARFIELD COUNTY, COLORADO

BASIS OF BEARINGS

BEARINGS ARE BASED ON THE ASSUMPTION THAT THE WEST
LINE OF THE NORTHWEST 1/4 OF SECTION 23
BEARS N00°46'39"W. MONUMENTS DESCRIBED HEREON.

BASIS OF ELEVATION

BENCH MARK (H79) LOCATED IN THE NE 1/4 OF SECTION 35, T4S,
R98W, 6th P.M., TAKEN FROM THE BULL FORK QUADRANGLE,
COLORADO, 7.5 MINUTE SERIES. (TOPOGRAPHIC MAP)
PUBLISHED BY THE UNITED STATES DEPARTMENT OF THE
INTERIOR, GEOLOGICAL SURVEY. SAID ELEVATION IS MARKED
AS BEING 8535 FEET.



CERTIFICATE

THIS IS TO CERTIFY THAT THE ABOVE PLAT WAS PREPARED AND THE LOCATION AS SHOWN WAS STAKED ON THE GROUND FROM FIELD NOTES OF ACTUAL SURVEYS MADE BY ME OR UNDER MY SUPERVISION AND THAT THE SAME ARE TRUE AND CORRECT TO THE BEST OF MY KNOWLEDGE AND BELIEF.

REGISTERED LAND SURVEYOR
REGISTRATION NO. 19180
STATE OF COLORADO

LINE TABLE			
LINE	DIRECTION	LENGTH	Description
L1	S87°21'03"W	1341.34'	(Meas. to True)
L2	N00°27'48"W	2608.13'	(Meas. to True)
L3	N00°27'48"W	2639.81'	(Meas. to W.C.)
L4	S69°50'58"W	100.08'	(TGI to TBH)

- LEGEND:
- = PROPOSED WELLHEAD.
 - ◆ = TOP OF GAS INTERVAL.
 - = TARGET BOTTOM HOLE.
 - ▲ = SECTION CORNERS LOCATED. (NAD 83)
 - △ = SECTION CORNERS RE-ESTABLISHED. (Not Set on Ground.) (NAD 83)

NAD 83 (SURFACE LOCATION)	NAD 83 (TOP OF GAS INTERVAL)	NAD 83 (TARGET BOTTOM HOLE)
LATITUDE = 39°41'03.78" (39.684383°)	LATITUDE = 39°41'26.80" (39.690779°)	LATITUDE = 39°41'26.47" (39.690685°)
LONGITUDE = 108°08'26.64" (108.140733°)	LONGITUDE = 108°08'46.24" (108.146177°)	LONGITUDE = 108°08'47.44" (108.146511°)
NAD 27 (SURFACE LOCATION)	NAD 27 (TOP OF GAS INTERVAL)	NAD 27 (TARGET BOTTOM HOLE)
LATITUDE = 39°41'03.87" (39.684408°)	LATITUDE = 39°41'26.89" (39.690804°)	LATITUDE = 39°41'26.55" (39.690710°)
LONGITUDE = 108°08'24.35" (108.140098°)	LONGITUDE = 108°08'43.95" (108.145541°)	LONGITUDE = 108°08'45.15" (108.145875°)
UTM NAD 27 (ZONE 12)	UTM NAD 27 (ZONE 12)	UTM NAD 27 (ZONE 12)
N: 14423959.39' E: 2445093.29'	N: 14426240.04' E: 2443487.33'	N: 14426202.81' E: 2443394.44'

PDOP = 1.3

REV: 2 01-10-23 T.L.L. (WELL NAME UPDATE, TGI & BHL MOVES)



UELS, LLC
Corporate Office * 85 South 200 East
Vernal, UT 84078 * (435) 789-1017

SURVEYED BY	DAYTON SLAUGH, B.H.	05-27-20	SCALE
DRAWN BY	T.L.L.	06-11-20	1" = 1000'

WELL LOCATION PLAT