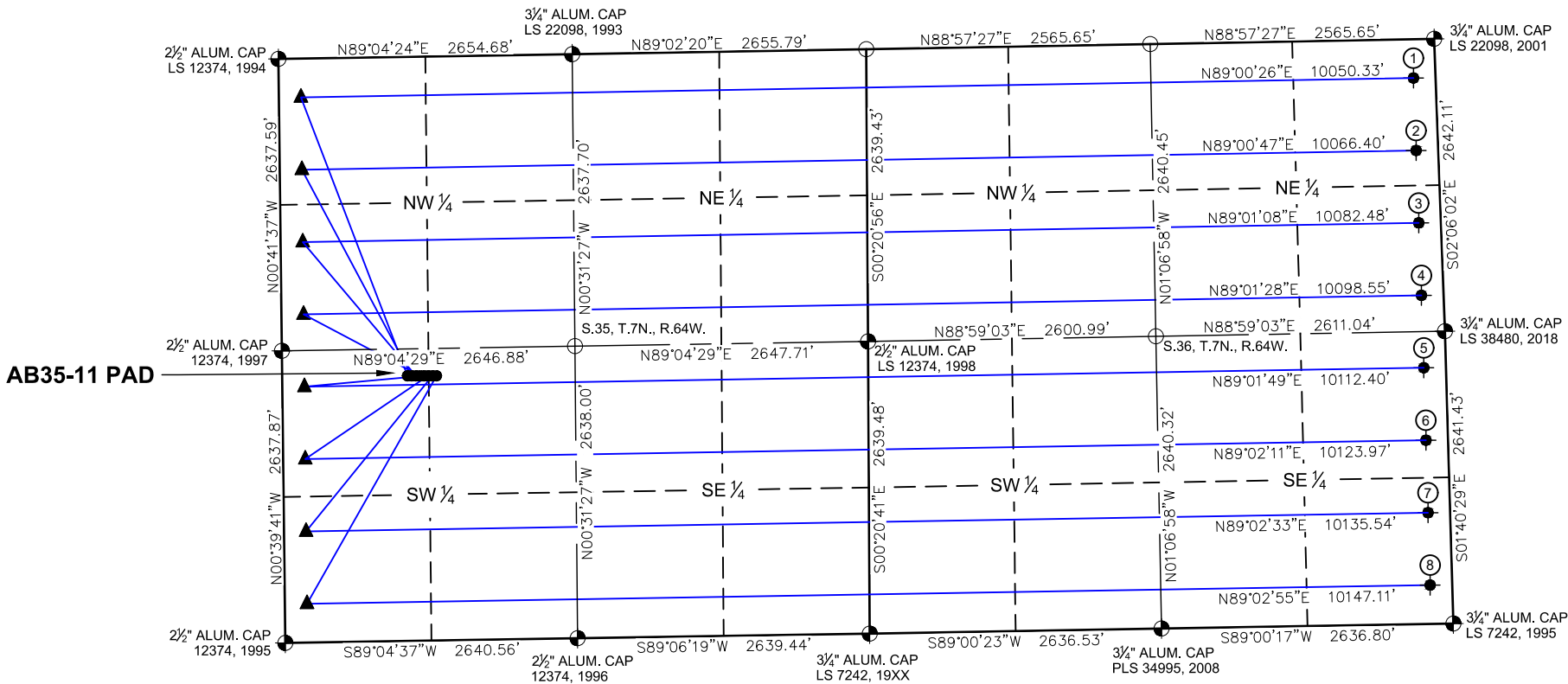
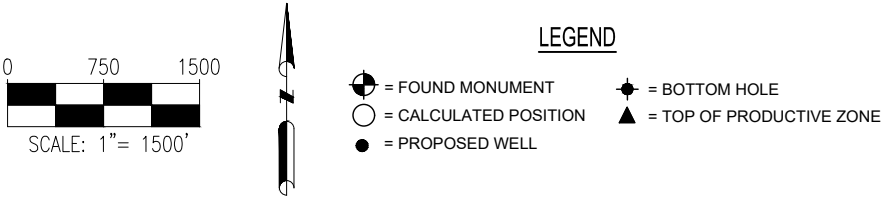
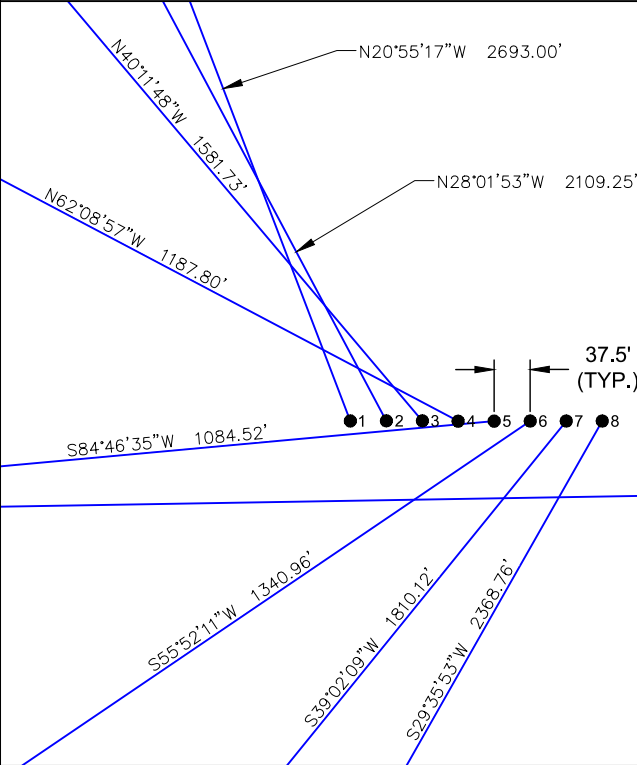


AB35-11 PAD
MULTI-WELL LOCATION PLAT / MULTI-WELL PLAN
T7N R64W SECTION 35



PROPOSED WELLBORE DIRECTION DATA
AB35-11 PAD
SLOTS 1-8



SURFACE HOLE LOCATION

TOP OF PRODUCTIVE ZONE

BOTTOM HOLE LOCATION

| SLOT | WELL NAME | LATITUDE | LONGITUDE | FOOTAGE | | QTR-QTR | ELEV. | PDOP | FOOTAGE | | FOOTAGE | |
|------|----------------|-------------|--------------|-----------|-----------|---------|-------|------|-----------|----------|-----------|----------|
| 1 | CECIL AB35-685 | 40.529133°N | 104.522674°W | 2395' FSL | 1131' FWL | NWSW | 4836' | 1.9 | 350' FNL | 200' FWL | 350' FNL | 200' FEL |
| 2 | CECIL AB35-675 | 40.529132°N | 104.522539°W | 2394' FSL | 1169' FWL | NWSW | 4836' | 1.9 | 1004' FNL | 200' FWL | 1005' FNL | 200' FEL |
| 3 | CECIL AB35-665 | 40.529131°N | 104.522404°W | 2394' FSL | 1206' FWL | NWSW | 4836' | 1.9 | 1657' FNL | 200' FWL | 1659' FNL | 200' FEL |
| 4 | CECIL AB35-655 | 40.529129°N | 104.522270°W | 2393' FSL | 1244' FWL | NWSW | 4836' | 1.9 | 2311' FNL | 200' FWL | 2314' FNL | 200' FEL |
| 5 | CECIL AB35-645 | 40.529128°N | 104.522135°W | 2392' FSL | 1281' FWL | NWSW | 4836' | 1.6 | 2311' FSL | 200' FWL | 2314' FSL | 200' FEL |
| 6 | CECIL AB35-635 | 40.529127°N | 104.522000°W | 2392' FSL | 1319' FWL | NWSW | 4835' | 1.6 | 1657' FSL | 200' FWL | 1659' FSL | 200' FEL |
| 7 | CECIL AB35-625 | 40.529126°N | 104.521865°W | 2391' FSL | 1356' FWL | NESW | 4835' | 1.6 | 1004' FSL | 200' FWL | 1005' FSL | 200' FEL |
| 8 | CECIL AB35-615 | 40.529125°N | 104.521730°W | 2391' FSL | 1394' FWL | NESW | 4834' | 1.4 | 350' FSL | 200' FWL | 350' FSL | 200' FEL |

Notes:
1) All bearings are Grid Bearings of the Colorado State Plane Coordinate System, North Zone, North American Datum 1983/2011. The lineal dimensions as shown herein are grid distances based upon the "U.S. Survey Foot." To get ground distances multiply shown distance by 1.000256.
2) Distances are measured at 90° from section line of the Sixth Principal Meridian, County of Weld, State of Colorado.
3) Ground elevations are based on an observed GPS elevation (NAVD 1988 DATUM).
4) Surface use: "IRRIGATED CROP LAND"
5) Instrument Operator: ALAN HNIZDO
6) This map does not represent a boundary survey.



FIELD DATE: 06-25-19
DRAWN BY: CSG

DRAWING DATE: 01-11-23
CHECKED BY: HJL

SURFACE LOCATION:
SEC. 35, T7N, R64W, 6TH P.M.
WELD COUNTY, COLORADO

DISCLAIMER:
THIS PLOT DOES NOT REPRESENT A MONUMENTED LAND SURVEY AND SHOULD NOT BE RELIED UPON TO DETERMINE BOUNDARY LINES, PROPERTY OWNERSHIP OR OTHER PROPERTY INTERESTS. PARCEL LINES, IF DEPICTED HAVE NOT BEEN FIELD VERIFIED AND MAY BE BASED UPON PUBLICLY AVAILABLE DATA THAT ALSO HAS NOT BEEN INDEPENDENTLY VERIFIED.

PUBLICLY AVAILABLE DATA SOURCES HAVE NOT BEEN INDEPENDENTLY VERIFIED BY ASCENT.

