

Project: Garfield County, CO
Site: BJU B26 496 Pad
Well: BJU B26 FED 13B-26 496
Wellbore: Wellbore #1
Design: Design #2
Latitude: 39.677295
Longitude: -108.137780
Ground Level: 8211.0
RKB @ 8241.0usft (30')

PROJECT DETAILS: Garfield County, CO

Geodetic System: Universal Transverse Mercator (US Survey Feet)
Datum: NAD 1927 - Western US
Ellipsoid: Clarke 1886
Zone: Zone 12N (114 W to 108 W)
System Datum: Mean Sea Level

REFERENCE INFORMATION

Vertical (TVD) Reference: RKB @ 8241.0usft (30')
Section (VS) Reference: Slot - 13B-26(0.0N, 0.0E)
Measured Depth Reference: RKB @ 8241.0usft (30')
Calculation Method: Minimum Curvature

SECTION DETAILS

MD	Inc	Azi	TVD	+N-S	+E-W	Dleg	TFace	VSect	Annotation
120.0	0.50	78.95	120.0	0.1	0.6	0.00	0.00	-0.3	Conductor Tie in
170.0	1.00	255.00	170.0	0.0	0.4	3.00	177.37	-0.2	EOB @ 1.00° Inc. / 255.00° Azm
300.0	1.00	255.00	300.0	-0.6	-1.8	0.00	0.00	1.4	Build 3° / 100'
433.4	5.00	255.00	433.1	-2.4	-8.6	3.00	0.00	6.2	EOB @ 5.00° Inc. / 255.00° Azm
766.8	5.00	255.00	765.3	-9.9	-36.6	0.00	0.00	26.4	Build 3° / 100'
1069.2	11.42	204.71	1064.7	-40.6	-61.9	3.00	-75.07	65.5	EOB @ 11.42° Inc. / 204.71° Azm
7817.9	11.42	204.71	7679.8	-1254.7	-620.7	0.00	0.00	1398.4	Drop 3° / 100'
8198.6	0.00	0.00	8058.0	-1289.1	-636.5	3.00	180.00	1436.1	EOD @ Vertical / Build 1.5° / 100'
8298.5	1.50	250.00	8157.8	-1289.5	-637.8	1.50	250.00	1437.1	EOB @ 1.50° Inc. / 250.00° Azm
12074.9	1.50	250.00	11933.0	-1323.3	-730.5	0.00	0.00	1511.5	TD @ 12074.9' MD / 11933.0' TVD

DESIGN TARGET DETAILS

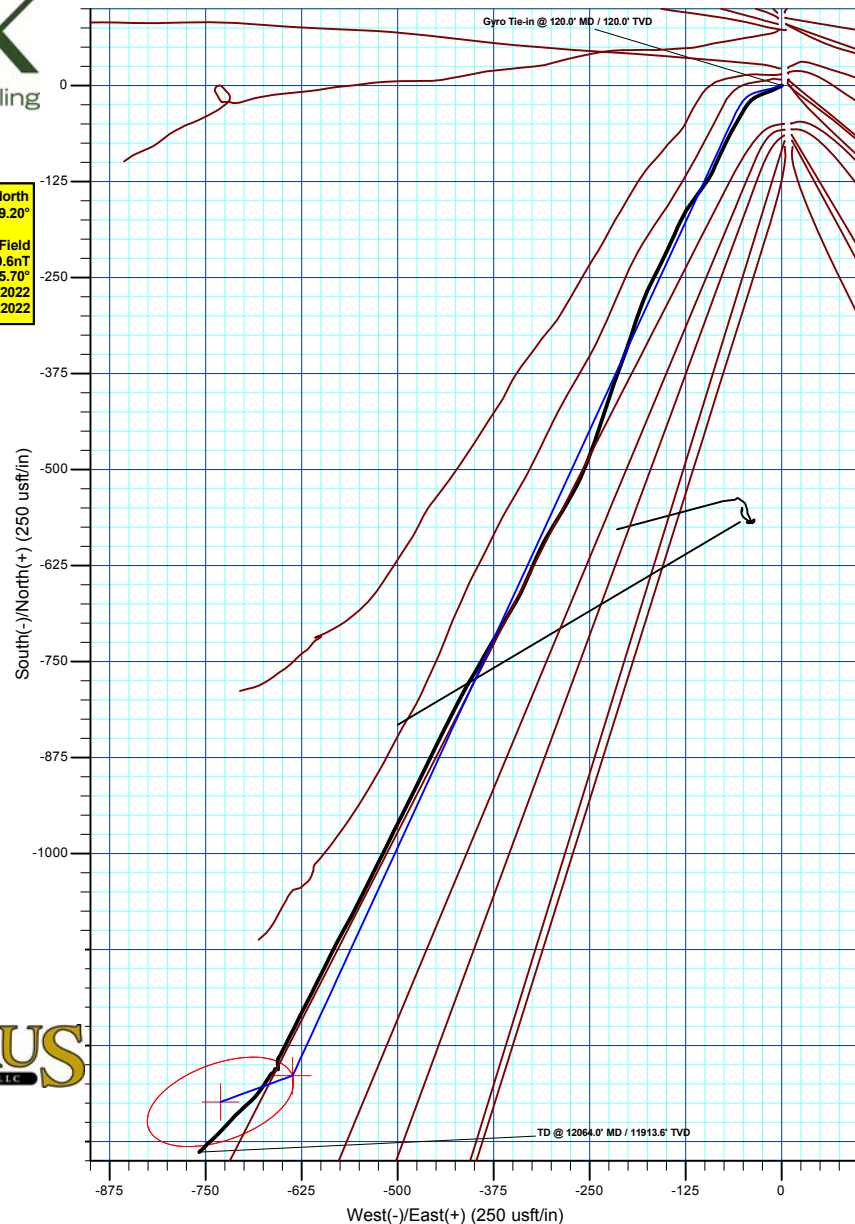
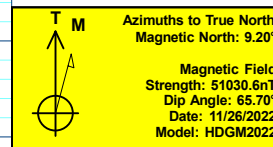
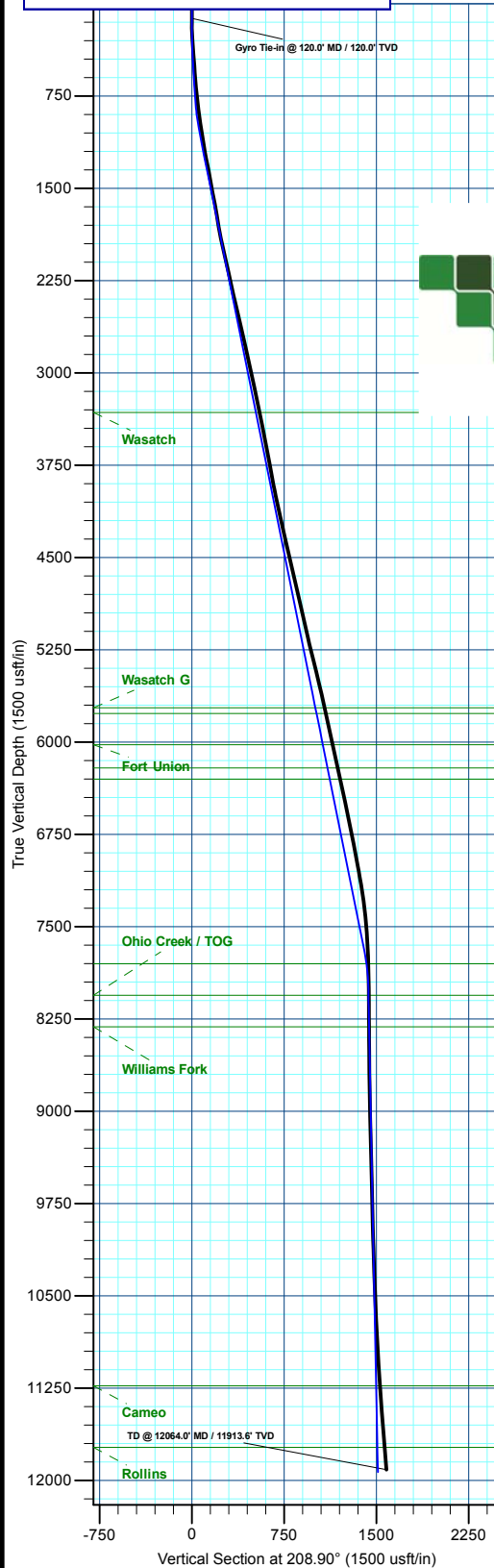
Name	TVD	+N-S	+E-W	Northing	Easting	Latitude	Longitude
13B-26 - OHCR	8058.0	-1289.1	-636.5	14420081.29	2445233.13	39.673758	-108.140040
13B-26 - PBHL	11933.0	-1323.3	-730.5	14420044.10	2445140.30	39.673664	-108.140374

WELL DETAILS: BJU B26 FED 13B-26 496

+N-S	+E-W	Northing	Easting	Latitude	Longitude
0.0	0.0	14421390.00	2445828.20	39.677295	-108.137780

ANNOTATIONS

MD	Inc	Azi	TVD	+N-S	+E-W	VSect	Departure	Annotation
120.0	0.50	78.95	120.0	0.1	0.6	-0.3	0.6	Gyro Tie-in @ 120.0' MD / 120.0' TVD
12064.0	4.80	225.50	11913.6	-1388.6	-758.0	1582.0	1608.9	TD @ 12064.0' MD / 11913.6' TVD



Plan: Design #2 (BJU B26 FED 13B-26 496/Wellbore #1)

Created By: Will Jircik Date: 16:22, December 06 2022



Caerus Oil & Gas

Garfield County, CO

BJU B26 496 Pad

BJU B26 FED 13B-26 496 - Slot 13B-26

Wellbore #1

Design: Wellbore #1

KLX Survey Report

06 December, 2022



Company:	Caerus Oil & Gas	Local Co-ordinate Reference:	Well BJU B26 FED 13B-26 496 - Slot 13B-26
Project:	Garfield County, CO	TVD Reference:	RKB @ 8241.0usft (30')
Site:	BJU B26 496 Pad	MD Reference:	RKB @ 8241.0usft (30')
Well:	BJU B26 FED 13B-26 496	North Reference:	True
Wellbore:	Wellbore #1	Survey Calculation Method:	Minimum Curvature
Design:	Wellbore #1	Database:	EDM 5000.1 Single User Db

Project	Garfield County, CO		
Map System:	Universal Transverse Mercator (US Survey Feet)	System Datum:	Mean Sea Level
Geo Datum:	NAD 1927 - Western US		
Map Zone:	Zone 12N (114 W to 108 W)		

Site		BJU B26 496 Pad							
Site Position:		Northing:	14,421,469.70	usft	Latitude:	39.677515			
From:	Map	Easting:	2,445,821.30	usft	Longitude:	-108.137796			
Position Uncertainty:		0.0	usft	Slot Radius:	13-3/16	"	Grid Convergence:	1.83	°

Well	BJU B26 FED 13B-26 496 - Slot 13B-26					
Well Position	+N/-S	0.0 usft	Northing:	14,421,390.00 usft	Latitude:	39.677296
	+E/-W	0.0 usft	Easting:	2,445,828.20 usft	Longitude:	-108.137780
Position Uncertainty		0.0 usft	Wellhead Elevation:	usft	Ground Level:	8,211.0 usft

Wellbore	Wellbore #1				
Magnetics	Model Name	Sample Date	Declination (°)	Dip Angle (°)	Field Strength (nT)
	HDGM2022	11/26/2022	9.20	65.70	51,030.60000000

Design	Wellbore #1				
Audit Notes:					
Version:	1.0	Phase:	ACTUAL	Tie On Depth:	0.0
Vertical Section:	Depth From (TVD) (usft)	+N/-S (usft)	+E/-W (usft)	Direction (°)	
	0.0	0.0	0.0	208.63	

Survey Program	Date	12/6/2022			
From (usft)	To (usft)	Survey (Wellbore)	Tool Name	Description	
30.0	120.0	Sfc Gyro (Wellbore #1)	GYRO-NS	OWSG Gyrocompass Gyro	
327.0	12,064.0	KLX MWD (Wellbore #1)	MWD	OWSG MWD - Standard	

Survey										
Measured Depth (usft)	Inclination (°)	Azimuth (°)	Vertical Depth (usft)	+N/-S (usft)	+E/-W (usft)	Vertical Section (usft)	Dogleg Rate (°/100usft)	Build Rate (°/100usft)	Turn Rate (°/100usft)	
0.0	0.00	0.00	0.0	0.0	0.0	0.0	0.00	0.00	0.00	
30.0	0.00	0.00	30.0	0.0	0.0	0.0	0.00	0.00	0.00	
60.0	0.25	59.67	60.0	0.0	0.1	-0.1	0.83	0.83	0.00	
90.0	0.63	91.37	90.0	0.1	0.3	-0.2	1.46	1.27	105.67	
Gyro Tie-in @ 120.0' MD / 120.0' TVD										
120.0	0.50	78.95	120.0	0.1	0.6	-0.3	0.59	-0.43	-41.40	
327.0	4.90	245.80	326.8	-3.4	-6.6	6.1	2.60	2.13	80.60	
417.0	5.80	246.10	416.4	-6.8	-14.3	12.8	1.00	1.00	0.33	
507.0	5.00	249.80	506.0	-10.0	-22.1	19.4	0.97	-0.89	4.11	
601.0	5.40	248.70	599.6	-13.0	-30.1	25.8	0.44	0.43	-1.17	

Company:	Caerus Oil & Gas	Local Co-ordinate Reference:	Well BJU B26 FED 13B-26 496 - Slot 13B-26
Project:	Garfield County, CO	TVD Reference:	RKB @ 8241.0usft (30')
Site:	BJU B26 496 Pad	MD Reference:	RKB @ 8241.0usft (30')
Well:	BJU B26 FED 13B-26 496	North Reference:	True
Wellbore:	Wellbore #1	Survey Calculation Method:	Minimum Curvature
Design:	Wellbore #1	Database:	EDM 5000.1 Single User Db

Survey										
Measured Depth (usft)	Inclination (°)	Azimuth (°)	Vertical Depth (usft)	+N/-S (usft)	+E/-W (usft)	Vertical Section (usft)	Dogleg Rate (°/100usft)	Build Rate (°/100usft)	Turn Rate (°/100usft)	
696.0	6.20	229.10	694.1	-18.0	-38.1	34.1	2.23	0.84	-20.63	
791.0	6.70	214.20	788.5	-25.9	-45.1	44.4	1.83	0.53	-15.68	
885.0	7.60	210.70	881.8	-35.8	-51.4	56.0	1.06	0.96	-3.72	
980.0	8.90	208.40	975.8	-47.7	-58.1	69.7	1.41	1.37	-2.42	
1,074.0	9.10	210.60	1,068.6	-60.5	-65.3	84.4	0.42	0.21	2.34	
1,169.0	9.10	204.80	1,162.4	-73.8	-72.3	99.4	0.97	0.00	-6.11	
1,264.0	10.90	206.00	1,256.0	-88.7	-79.4	115.8	1.91	1.89	1.26	
1,358.0	11.30	202.30	1,348.2	-105.2	-86.8	133.9	0.87	0.43	-3.94	
1,453.0	10.20	212.40	1,441.6	-120.9	-94.8	151.5	2.29	-1.16	10.63	
1,547.0	10.50	215.60	1,534.1	-134.9	-104.3	168.3	0.69	0.32	3.40	
1,642.0	10.70	217.60	1,627.4	-148.9	-114.7	185.6	0.44	0.21	2.11	
1,736.0	9.80	210.00	1,719.9	-162.7	-124.0	202.3	1.73	-0.96	-8.09	
1,831.0	9.50	206.20	1,813.6	-176.8	-131.5	218.2	0.74	-0.32	-4.00	
1,925.0	11.20	204.20	1,906.1	-192.1	-138.7	235.0	1.85	1.81	-2.13	
2,020.0	13.10	204.50	1,998.9	-210.3	-146.9	255.0	2.00	2.00	0.32	
2,114.0	13.30	206.00	2,090.4	-229.7	-156.1	276.4	0.42	0.21	1.60	
2,209.0	12.40	208.10	2,183.1	-248.5	-165.7	297.5	1.07	-0.95	2.21	
2,304.0	12.30	203.50	2,275.9	-266.8	-174.5	317.8	1.04	-0.11	-4.84	
2,398.0	13.20	200.70	2,367.6	-286.0	-182.3	338.4	1.16	0.96	-2.98	
2,493.0	13.10	198.30	2,460.1	-306.4	-189.5	359.7	0.58	-0.11	-2.53	
2,588.0	13.10	197.90	2,552.6	-326.8	-196.2	380.9	0.10	0.00	-0.42	
2,682.0	13.10	199.90	2,644.1	-347.0	-203.1	401.9	0.48	0.00	2.13	
2,777.0	13.20	200.80	2,736.7	-367.3	-210.6	423.3	0.24	0.11	0.95	
2,872.0	12.90	198.80	2,829.2	-387.4	-217.9	444.5	0.57	-0.32	-2.11	
2,966.0	12.90	199.10	2,920.8	-407.3	-224.7	465.2	0.07	0.00	0.32	
2,998.0	12.60	198.00	2,952.0	-414.0	-227.0	472.1	1.21	-0.94	-3.44	
3,075.0	12.60	198.10	3,027.2	-430.0	-232.2	488.6	0.03	0.00	0.13	
3,170.0	12.00	196.90	3,120.0	-449.2	-238.2	508.5	0.69	-0.63	-1.26	
3,264.0	11.90	201.50	3,212.0	-467.6	-244.6	527.7	1.02	-0.11	4.89	
3,359.0	11.70	201.20	3,305.0	-485.7	-251.7	546.9	0.22	-0.21	-0.32	
3,454.0	11.30	200.90	3,398.1	-503.4	-258.5	565.7	0.43	-0.42	-0.32	
3,548.0	11.00	208.10	3,490.3	-519.9	-266.0	583.8	1.51	-0.32	7.66	
3,643.0	10.40	209.90	3,583.6	-535.3	-274.6	601.4	0.72	-0.63	1.89	
3,737.0	11.30	210.70	3,675.9	-550.6	-283.5	619.1	0.97	0.96	0.85	
3,832.0	11.30	210.70	3,769.1	-566.6	-293.0	637.7	0.00	0.00	0.00	
3,927.0	10.00	211.70	3,862.5	-581.6	-302.1	655.3	1.38	-1.37	1.05	
4,021.0	11.10	207.80	3,954.9	-596.6	-310.6	672.5	1.39	1.17	-4.15	
4,116.0	12.80	203.70	4,047.8	-614.3	-319.1	692.1	2.00	1.79	-4.32	
4,210.0	12.40	203.70	4,139.6	-633.1	-327.3	712.5	0.43	-0.43	0.00	
4,305.0	12.00	203.60	4,232.4	-651.5	-335.4	732.5	0.42	-0.42	-0.11	
4,400.0	13.10	209.20	4,325.1	-669.9	-344.6	753.1	1.73	1.16	5.89	
4,494.0	13.10	211.20	4,416.7	-688.3	-355.3	774.4	0.48	0.00	2.13	
4,589.0	12.30	210.30	4,509.4	-706.3	-366.0	795.3	0.87	-0.84	-0.95	

Company:	Caerus Oil & Gas	Local Co-ordinate Reference:	Well BJU B26 FED 13B-26 496 - Slot 13B-26
Project:	Garfield County, CO	TVD Reference:	RKB @ 8241.0usft (30')
Site:	BJU B26 496 Pad	MD Reference:	RKB @ 8241.0usft (30')
Well:	BJU B26 FED 13B-26 496	North Reference:	True
Wellbore:	Wellbore #1	Survey Calculation Method:	Minimum Curvature
Design:	Wellbore #1	Database:	EDM 5000.1 Single User Db

Survey									
Measured Depth (usft)	Inclination (°)	Azimuth (°)	Vertical Depth (usft)	+N/-S (usft)	+E/-W (usft)	Vertical Section (usft)	Dogleg Rate (°/100usft)	Build Rate (°/100usft)	Turn Rate (°/100usft)
4,683.0	13.70	209.90	4,601.0	-724.6	-376.6	816.4	1.49	1.49	-0.43
4,778.0	13.70	209.70	4,693.3	-744.1	-387.8	838.9	0.05	0.00	-0.21
4,872.0	12.70	210.00	4,784.8	-762.7	-398.5	860.4	1.07	-1.06	0.32
4,967.0	12.10	211.10	4,877.6	-780.3	-408.8	880.8	0.68	-0.63	1.16
5,062.0	13.00	207.20	4,970.3	-798.3	-418.9	901.4	1.30	0.95	-4.11
5,157.0	13.10	206.10	5,062.8	-817.5	-428.5	922.8	0.28	0.11	-1.16
5,251.0	12.60	207.00	5,154.5	-836.2	-437.8	943.7	0.57	-0.53	0.96
5,346.0	13.80	206.50	5,247.0	-855.6	-447.6	965.4	1.27	1.26	-0.53
5,441.0	14.10	206.30	5,339.2	-876.1	-457.8	988.3	0.32	0.32	-0.21
5,536.0	13.70	206.30	5,431.4	-896.5	-467.9	1,011.1	0.42	-0.42	0.00
5,630.0	13.20	205.60	5,522.8	-916.2	-477.4	1,032.9	0.56	-0.53	-0.74
5,725.0	12.60	206.30	5,615.4	-935.3	-486.7	1,054.1	0.65	-0.63	0.74
5,819.0	12.00	207.70	5,707.2	-953.1	-495.8	1,074.1	0.71	-0.64	1.49
5,914.0	13.20	205.70	5,800.0	-971.6	-505.1	1,094.8	1.34	1.26	-2.11
6,009.0	12.70	206.60	5,892.5	-990.7	-514.5	1,116.1	0.57	-0.53	0.95
6,103.0	12.30	206.90	5,984.3	-1,008.9	-523.6	1,136.4	0.43	-0.43	0.32
6,198.0	13.00	206.20	6,077.0	-1,027.5	-532.9	1,157.2	0.75	0.74	-0.74
6,292.0	12.50	206.60	6,168.7	-1,046.1	-542.1	1,178.0	0.54	-0.53	0.43
6,387.0	11.70	206.30	6,261.6	-1,063.9	-551.0	1,197.9	0.84	-0.84	-0.32
6,481.0	12.00	208.30	6,353.6	-1,081.1	-559.9	1,217.2	0.54	0.32	2.13
6,576.0	11.70	210.40	6,446.6	-1,098.1	-569.4	1,236.7	0.55	-0.32	2.21
6,671.0	11.80	206.90	6,539.6	-1,115.1	-578.7	1,256.0	0.76	0.11	-3.68
6,765.0	12.00	205.70	6,631.5	-1,132.4	-587.3	1,275.4	0.34	0.21	-1.28
6,860.0	11.50	206.80	6,724.6	-1,149.8	-595.8	1,294.7	0.58	-0.53	1.16
6,955.0	10.90	206.30	6,817.7	-1,166.3	-604.1	1,313.1	0.64	-0.63	-0.53
7,049.0	10.60	206.60	6,910.1	-1,182.0	-611.9	1,330.7	0.32	-0.32	0.32
7,144.0	10.40	208.10	7,003.5	-1,197.4	-619.9	1,348.0	0.36	-0.21	1.58
7,238.0	9.10	205.90	7,096.1	-1,211.5	-627.1	1,363.9	1.44	-1.38	-2.34
7,333.0	8.90	206.40	7,190.0	-1,224.9	-633.6	1,378.7	0.23	-0.21	0.53
7,428.0	8.80	207.20	7,283.8	-1,237.9	-640.2	1,393.3	0.17	-0.11	0.84
7,522.0	7.00	206.50	7,376.9	-1,249.4	-646.1	1,406.2	1.92	-1.91	-0.74
7,617.0	5.20	206.70	7,471.4	-1,258.5	-650.6	1,416.3	1.89	-1.89	0.21
7,712.0	3.80	211.90	7,566.1	-1,265.0	-654.2	1,423.8	1.53	-1.47	5.47
7,806.0	2.40	189.40	7,660.0	-1,269.6	-656.2	1,428.7	1.95	-1.49	-23.94
7,901.0	2.00	167.60	7,754.9	-1,273.2	-656.1	1,431.9	0.97	-0.42	-22.95
7,995.0	1.80	173.60	7,848.9	-1,276.2	-655.6	1,434.3	0.30	-0.21	6.38
8,090.0	1.90	178.50	7,943.8	-1,279.3	-655.4	1,436.9	0.20	0.11	5.16
8,185.0	0.20	212.30	8,038.8	-1,281.0	-655.5	1,438.4	1.83	-1.79	35.58
8,280.0	0.90	293.50	8,133.8	-1,280.8	-656.2	1,438.7	0.94	0.74	85.47
8,374.0	1.30	275.60	8,227.8	-1,280.4	-658.0	1,439.1	0.56	0.43	-19.04
8,469.0	0.50	255.70	8,322.7	-1,280.4	-659.4	1,439.9	0.89	-0.84	-20.95
8,563.0	0.50	180.90	8,416.7	-1,280.9	-659.8	1,440.5	0.65	0.00	-79.57
8,658.0	0.70	191.70	8,511.7	-1,281.9	-660.0	1,441.4	0.24	0.21	11.37

Company:	Caerus Oil & Gas	Local Co-ordinate Reference:	Well BJU B26 FED 13B-26 496 - Slot 13B-26
Project:	Garfield County, CO	TVD Reference:	RKB @ 8241.0usft (30')
Site:	BJU B26 496 Pad	MD Reference:	RKB @ 8241.0usft (30')
Well:	BJU B26 FED 13B-26 496	North Reference:	True
Wellbore:	Wellbore #1	Survey Calculation Method:	Minimum Curvature
Design:	Wellbore #1	Database:	EDM 5000.1 Single User Db

Survey									
Measured Depth (usft)	Inclination (°)	Azimuth (°)	Vertical Depth (usft)	+N/-S (usft)	+E/-W (usft)	Vertical Section (usft)	Dogleg Rate (°/100usft)	Build Rate (°/100usft)	Turn Rate (°/100usft)
8,753.0	1.20	204.20	8,606.7	-1,283.4	-660.5	1,443.0	0.57	0.53	13.16
8,848.0	0.20	222.10	8,701.7	-1,284.4	-661.0	1,444.1	1.06	-1.05	18.84
8,942.0	0.70	232.40	8,795.7	-1,284.9	-661.6	1,444.8	0.54	0.53	10.96
9,037.0	1.50	243.60	8,890.7	-1,285.8	-663.1	1,446.4	0.87	0.84	11.79
9,131.0	0.80	228.70	8,984.7	-1,286.8	-664.7	1,448.0	0.80	-0.74	-15.85
9,226.0	1.20	202.60	9,079.7	-1,288.2	-665.6	1,449.6	0.63	0.42	-27.47
9,321.0	1.30	207.90	9,174.6	-1,290.0	-666.5	1,451.7	0.16	0.11	5.58
9,415.0	1.80	214.10	9,268.6	-1,292.2	-667.8	1,454.2	0.56	0.53	6.60
9,510.0	2.30	216.50	9,363.5	-1,295.0	-669.8	1,457.6	0.53	0.53	2.53
9,604.0	1.70	215.70	9,457.5	-1,297.6	-671.7	1,460.8	0.64	-0.64	-0.85
9,699.0	0.80	200.50	9,552.5	-1,299.4	-672.8	1,462.9	1.00	-0.95	-16.00
9,793.0	0.70	200.50	9,646.5	-1,300.5	-673.2	1,464.1	0.11	-0.11	0.00
9,888.0	1.10	225.50	9,741.4	-1,301.7	-674.1	1,465.5	0.58	0.42	26.32
9,982.0	1.40	216.80	9,835.4	-1,303.3	-675.4	1,467.5	0.38	0.32	-9.26
10,077.0	1.70	213.00	9,930.4	-1,305.4	-676.9	1,470.1	0.33	0.32	-4.00
10,172.0	1.70	211.80	10,025.3	-1,307.7	-678.4	1,472.9	0.04	0.00	-1.26
10,266.0	1.80	220.10	10,119.3	-1,310.1	-680.1	1,475.7	0.29	0.11	8.83
10,361.0	1.70	217.00	10,214.3	-1,312.3	-681.9	1,478.6	0.14	-0.11	-3.26
10,456.0	2.20	222.30	10,309.2	-1,314.8	-684.0	1,481.8	0.56	0.53	5.58
10,550.0	2.40	220.30	10,403.1	-1,317.6	-686.4	1,485.4	0.23	0.21	-2.13
10,645.0	2.50	226.10	10,498.0	-1,320.6	-689.2	1,489.4	0.28	0.11	6.11
10,740.0	2.60	225.60	10,592.9	-1,323.5	-692.3	1,493.4	0.11	0.11	-0.53
10,834.0	2.80	230.70	10,686.8	-1,326.5	-695.6	1,497.6	0.33	0.21	5.43
10,929.0	3.20	226.90	10,781.7	-1,329.8	-699.3	1,502.2	0.47	0.42	-4.00
11,023.0	3.20	226.50	10,875.6	-1,333.4	-703.1	1,507.2	0.02	0.00	-0.43
11,118.0	3.40	226.60	10,970.4	-1,337.1	-707.1	1,512.4	0.21	0.21	0.11
11,212.0	3.70	226.40	11,064.2	-1,341.1	-711.3	1,518.0	0.32	0.32	-0.21
11,307.0	3.90	221.40	11,159.0	-1,345.7	-715.7	1,524.0	0.41	0.21	-5.26
11,401.0	3.80	221.50	11,252.8	-1,350.4	-719.8	1,530.2	0.11	-0.11	0.11
11,496.0	4.30	222.10	11,347.6	-1,355.4	-724.3	1,536.7	0.53	0.53	0.63
11,590.0	4.40	224.30	11,441.3	-1,360.6	-729.2	1,543.6	0.21	0.11	2.34
11,685.0	4.90	225.20	11,536.0	-1,366.1	-734.6	1,551.0	0.53	0.53	0.95
11,780.0	5.10	229.50	11,630.6	-1,371.7	-740.7	1,558.9	0.45	0.21	4.53
11,875.0	5.00	225.20	11,725.3	-1,377.3	-746.8	1,566.8	0.41	-0.11	-4.53
11,969.0	4.70	223.30	11,818.9	-1,383.0	-752.4	1,574.4	0.36	-0.32	-2.02
12,004.0	4.80	225.50	11,853.8	-1,385.1	-754.4	1,577.2	0.59	0.29	6.29
TD @ 12064.0' MD / 11913.6' TVD									
12,064.0	4.80	225.50	11,913.6	-1,388.6	-758.0	1,582.0	0.00	0.00	0.00

Company:	Caerus Oil & Gas	Local Co-ordinate Reference:	Well BJU B26 FED 13B-26 496 - Slot 13B-26
Project:	Garfield County, CO	TVD Reference:	RKB @ 8241.0usft (30')
Site:	BJU B26 496 Pad	MD Reference:	RKB @ 8241.0usft (30')
Well:	BJU B26 FED 13B-26 496	North Reference:	True
Wellbore:	Wellbore #1	Survey Calculation Method:	Minimum Curvature
Design:	Wellbore #1	Database:	EDM 5000.1 Single User Db

Design Annotations				
Measured Depth (usft)	Vertical Depth (usft)	Local Coordinates		Comment
		+N/-S (usft)	+E/-W (usft)	
120.0	120.0	0.1	0.6	Gyro Tie-in @ 120.0' MD / 120.0' TVD
12,064.0	11,913.6	-1,388.6	-758.0	TD @ 12064.0' MD / 11913.6' TVD