



Compensated Neutron
Gamma Ray
Casing Collar Log

Company	Caerus Piceance LLC.	Country	USA
Well	BJU B26 FED 23B-26-496		
Field	Grand Valley		
County	Garfield		
State	Colorado		
Location:	SEC 26 TWP 4S RGE 96W	API # : 05-045-24461	Other Services RCBL
Permanent Datum	Ground Level	Elevation	8211'
Log Measured From	Kelly Bushing		
Drilling Measured From	Kelly Bushing		
Elevation			K.B. 8241' D.F. 8240' G.L. 8211'

Date	27-DEC-2022
Run Number	One
Depth Driller	12500 FT
Depth Logger	12290 FT
Bottom Logged Interval	12276 FT
Top Log Interval	8000 FT
Open Hole Size	8.750"
Type Fluid	Fresh Water
Density / Viscosity	8.34 lb/gal
Max. Recorded Temp.	---
Estimated Cement Top	---
Time Well Ready	ROA
Time Logger on Bottom	08:00
Equipment Number	8045
Location	Grand Junction, Co.
Recorded By	A. Ellsworth
Witnessed By	Z. Fisher

Borehole Record				Tubing Record			
Run Number	Bit	From	To	Size	Weight	From	To
	8.75"	Surface	12500'				

Casing Record	Size	Wgt/Ft	Top	Bottom
Surface String	9.625"	36	Surface	3015 FT
Prot. String	4.5"	11.6	Surface	12485 FT
Production String				
Liner				

<<<< Fold Here >>>>

All interpretations are opinions based on inferences from electrical or other measurements and we cannot and do not guarantee the accuracy or correctness of any interpretation, and we shall not, except in the case of gross or willful negligence on our part, be liable or responsible for any loss, costs, damages, or expenses incurred or sustained by anyone resulting from any interpretation made by any of our officers, agents or employees. These interpretations are also subject to our general terms and conditions set out in our current Price Schedule.

Comments

Log ran as per customer request.
Depth referenced to Kelly Bushing @ 30FT
Marker Joint from 8478 FT - 8488 FT
Log ran from 12290 FT to 8000 FT
Log ran with 0 PSI surface induced pressure.

Thank you for choosing The Wireline Group!!!



Main Pass 5" = 100'

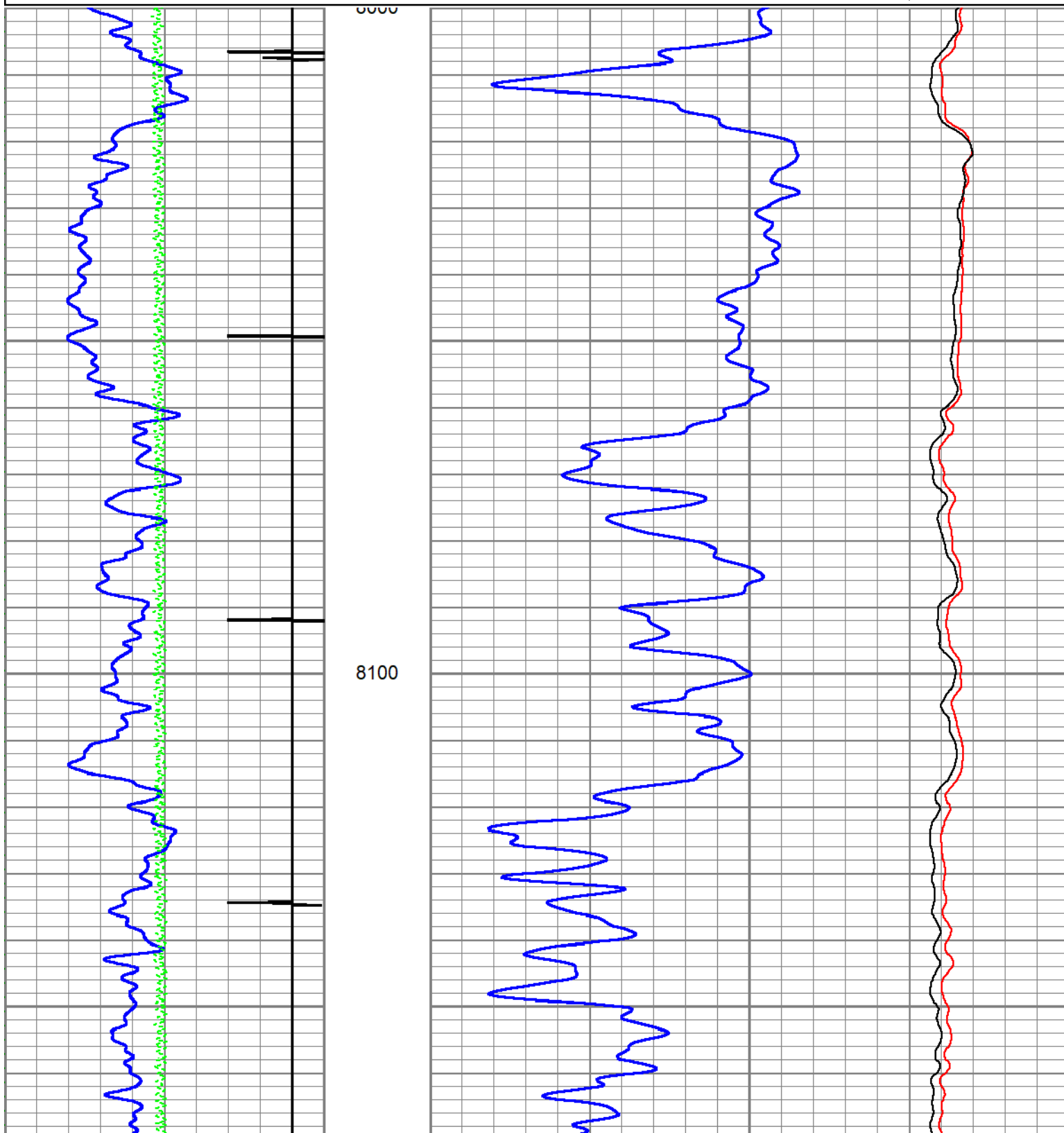
Database File caerus_bju b26 fed 23b-26-496_rcbl-cn1_12-27-2022.db
Dataset Pathname main
Presentation Format twgcnl
Dataset Creation Tue Dec 27 08:06:49 2022
Charted by Depth in Feet scaled 1:240

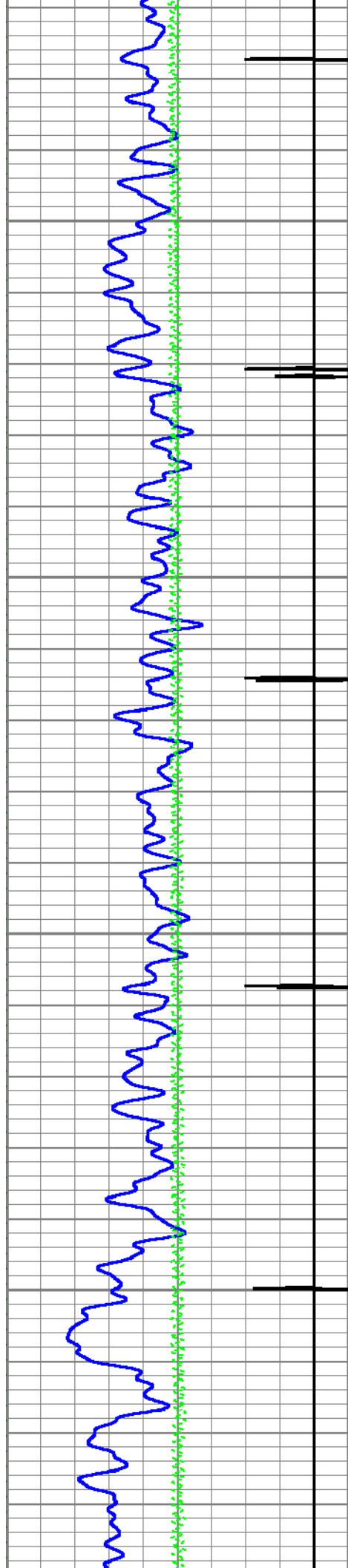
0	GR (GAPI)	200
-9	CCL	1
0	Line Tension (lb)	4000

0.3 CNPOR (pu) -0.1

CNLSC
0 (cps) 1500

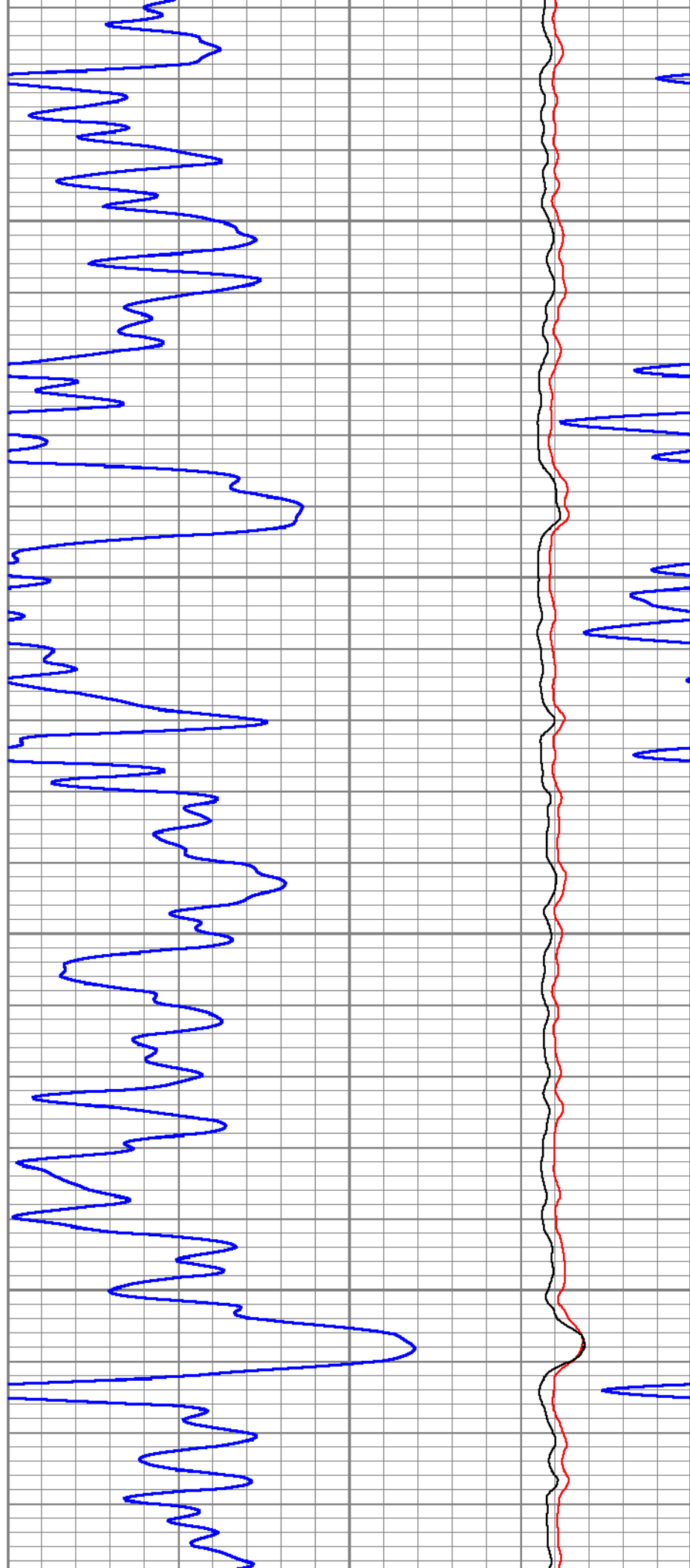
CNSSC
0 (cps) 7000

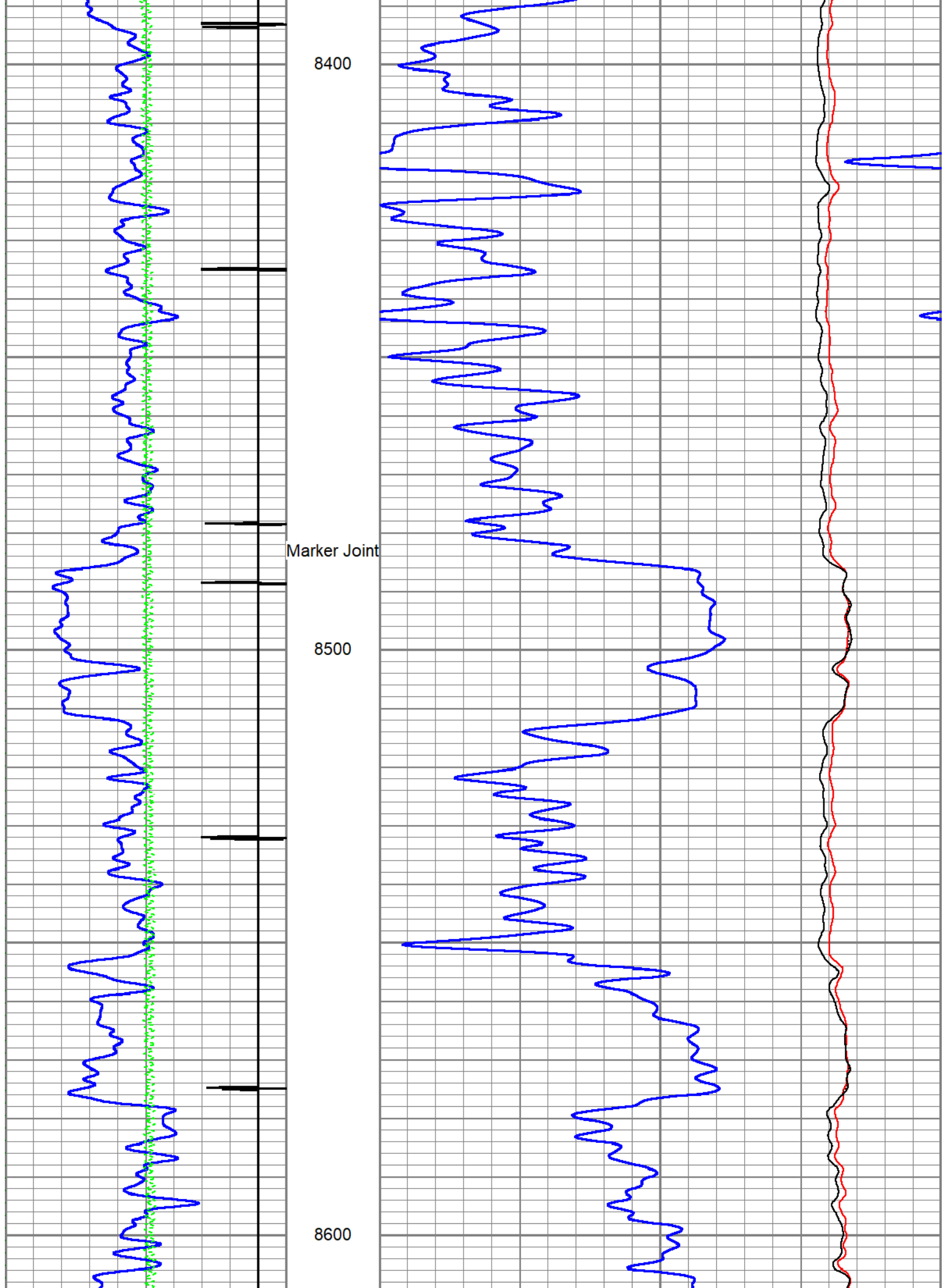


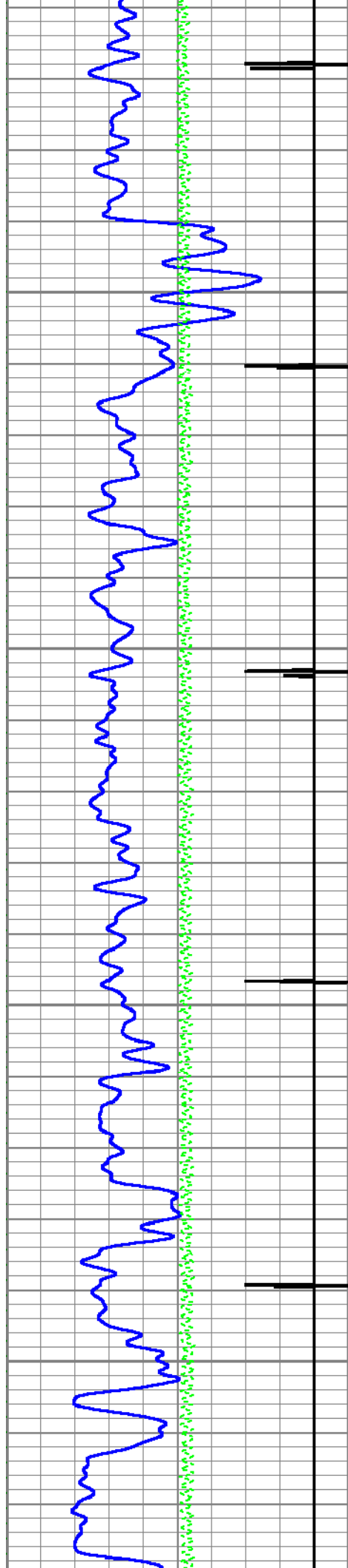


8200

8300

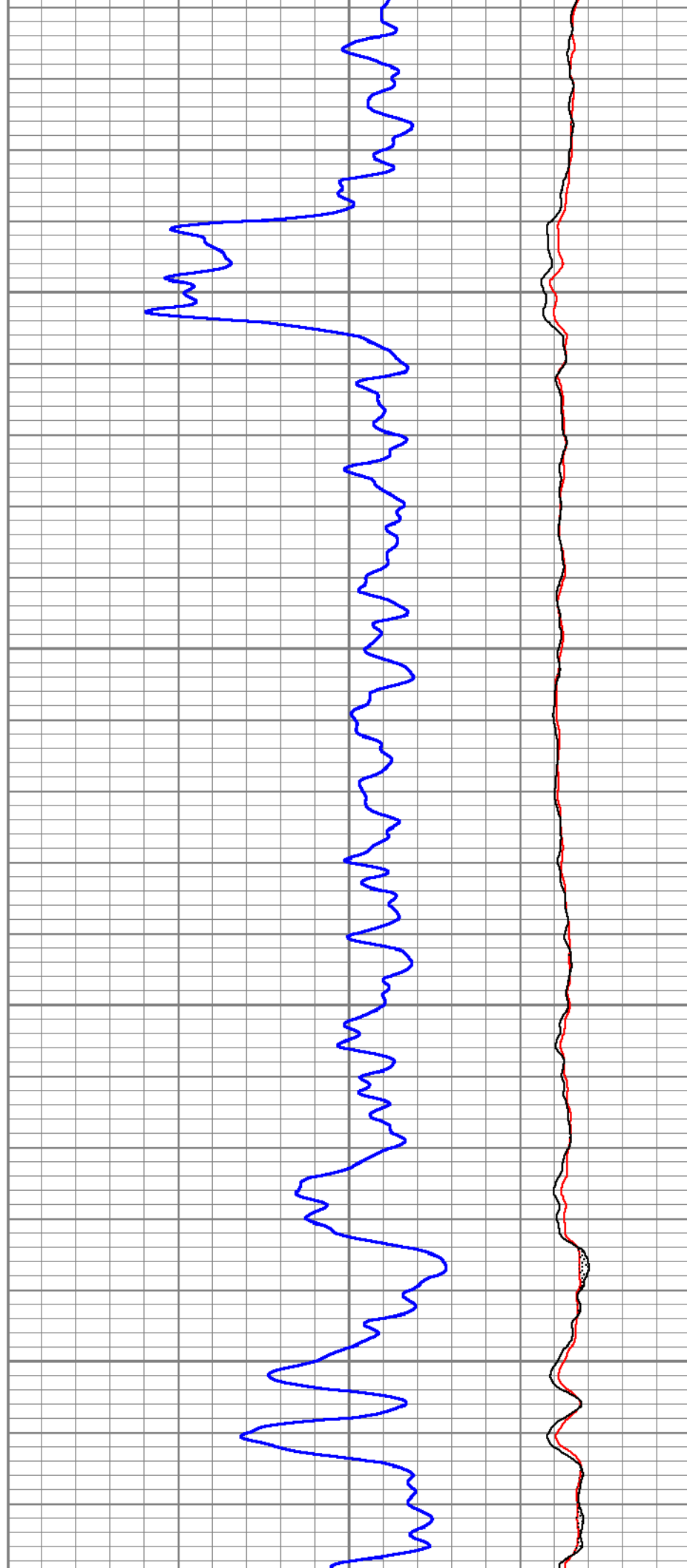


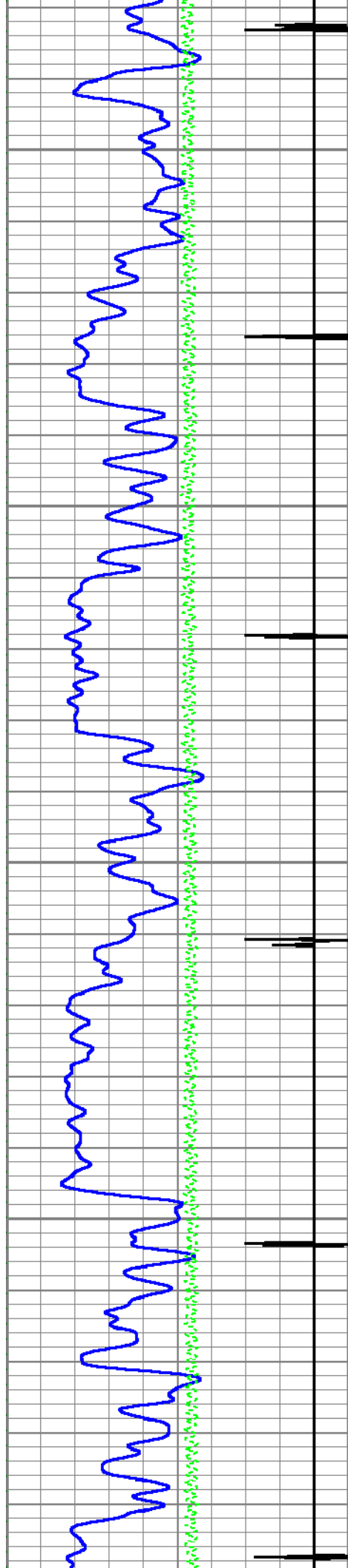




8700

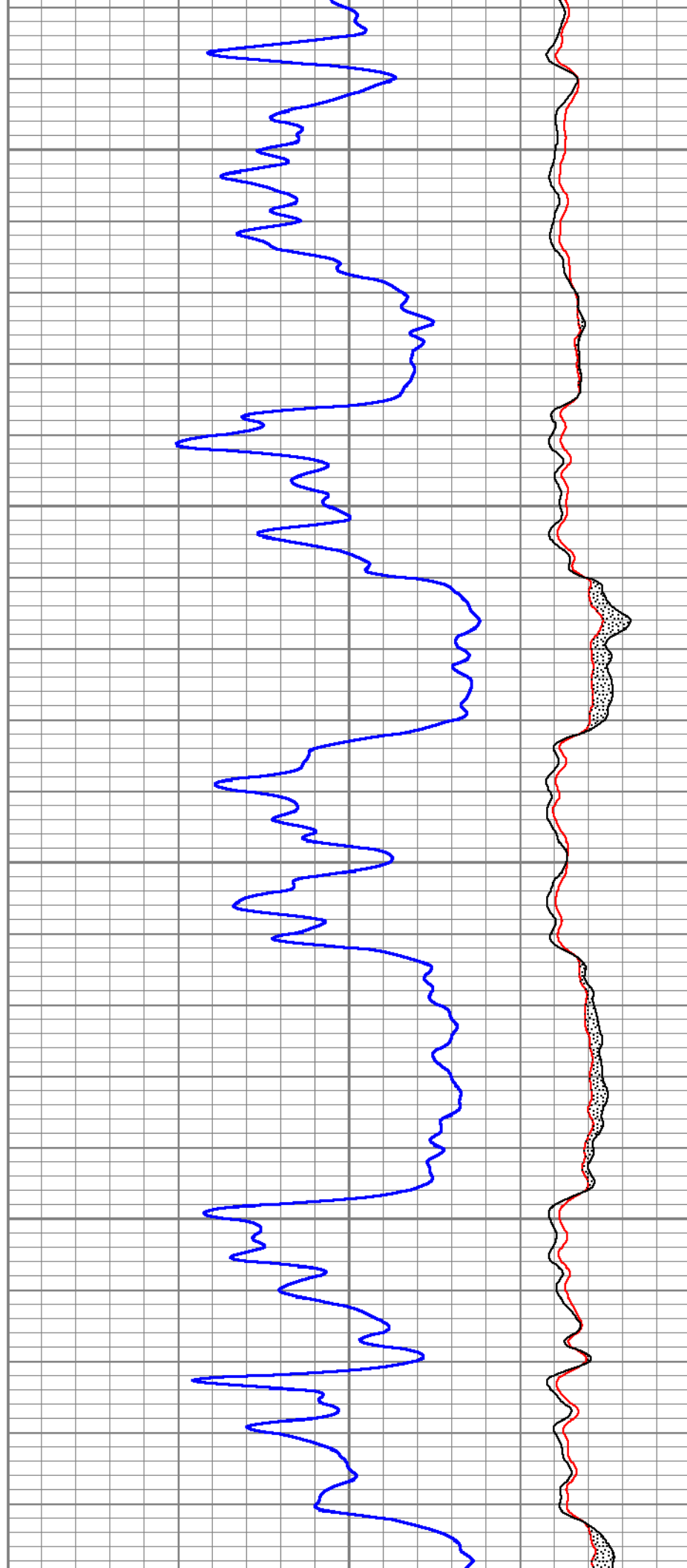
8800

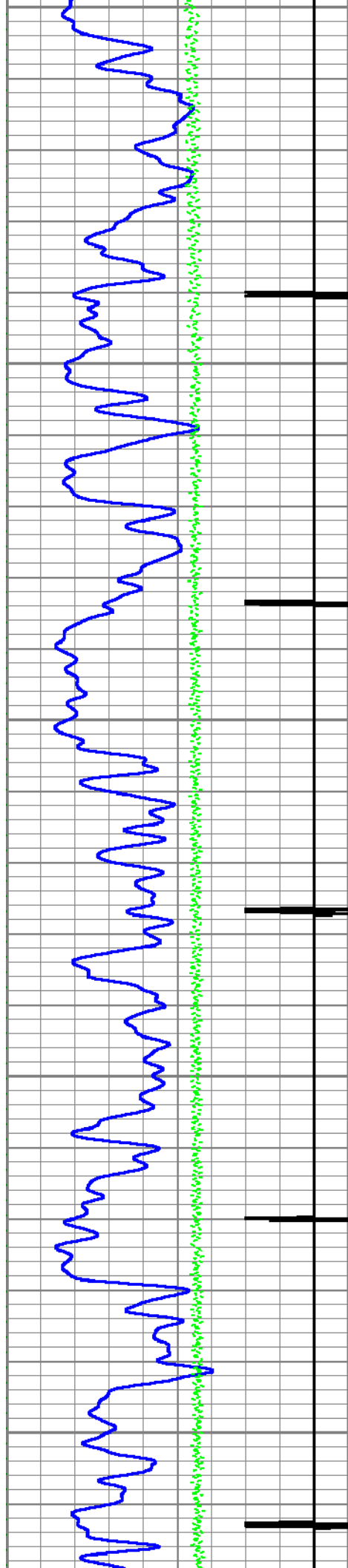




8900

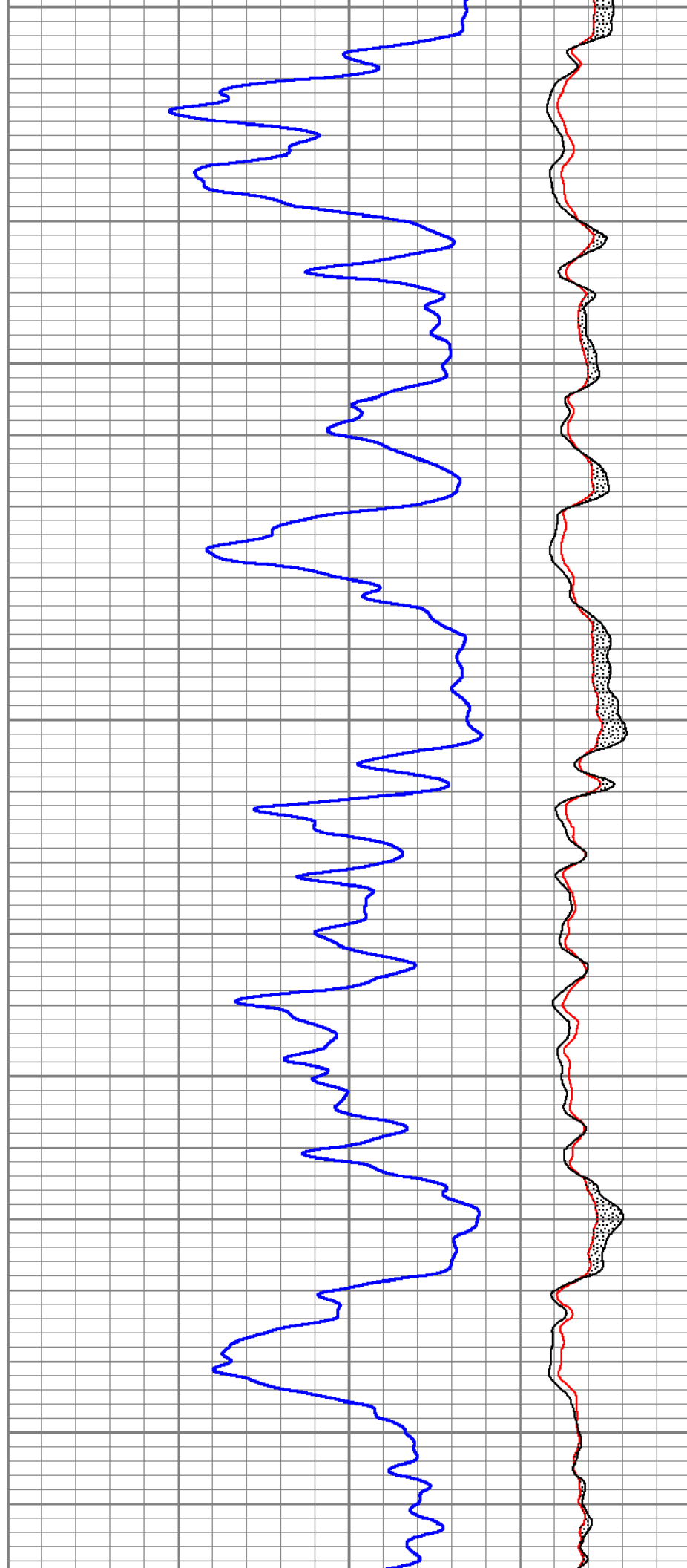
9000

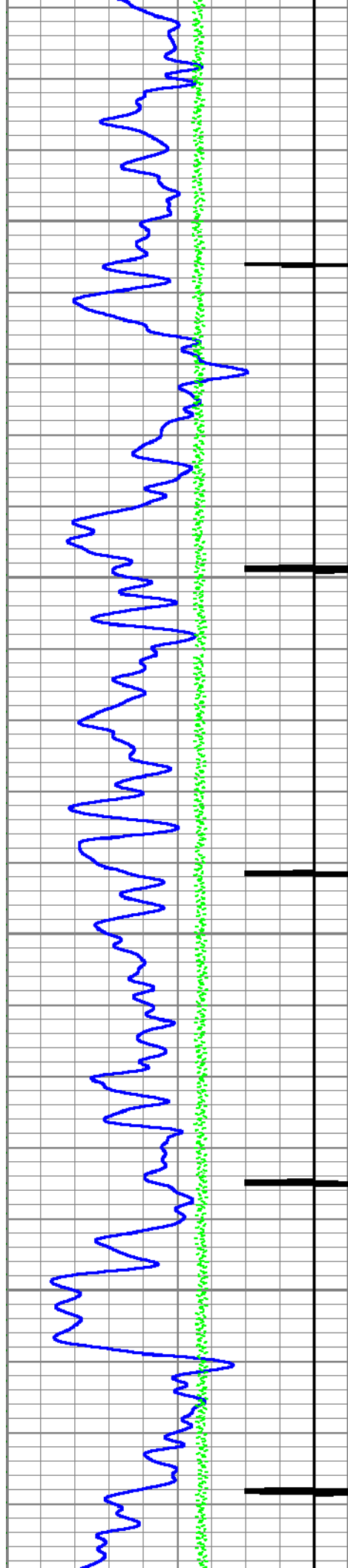




9100

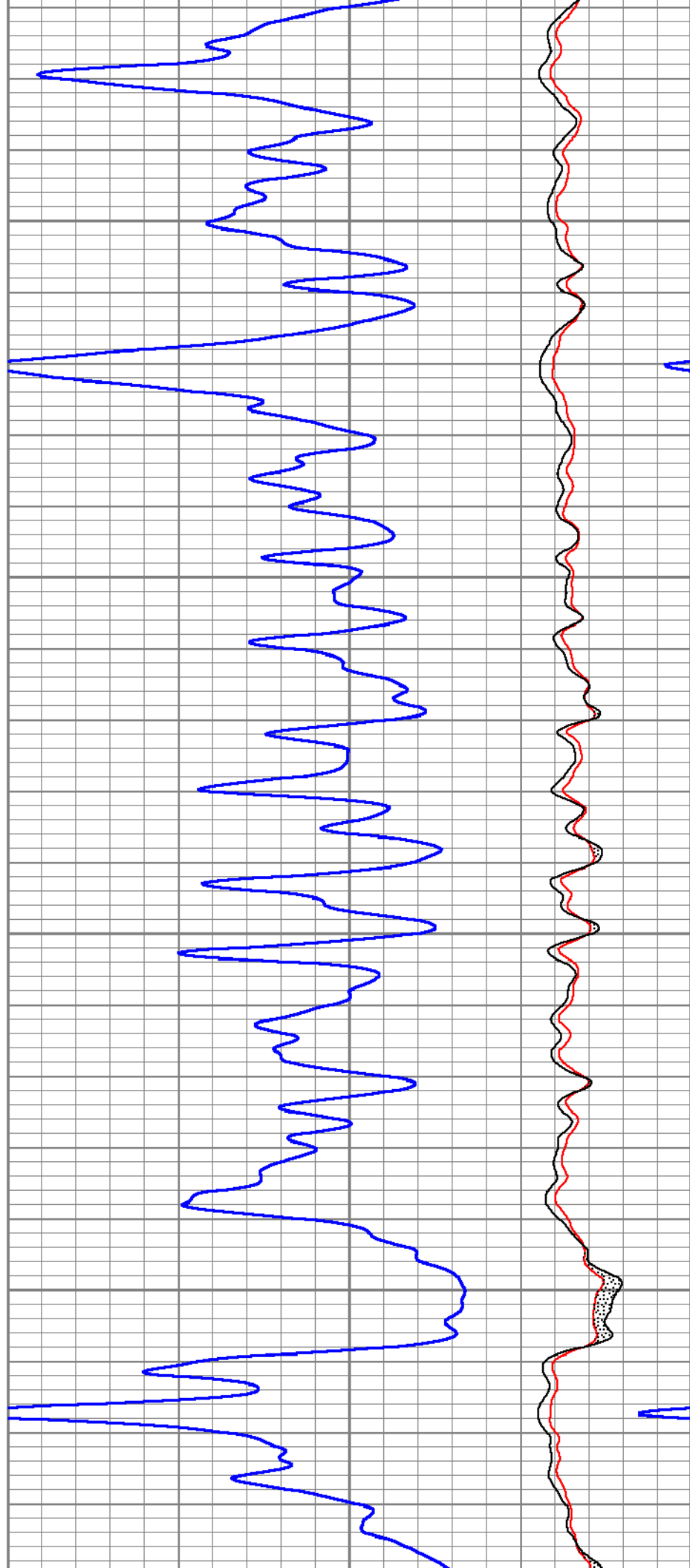
9200

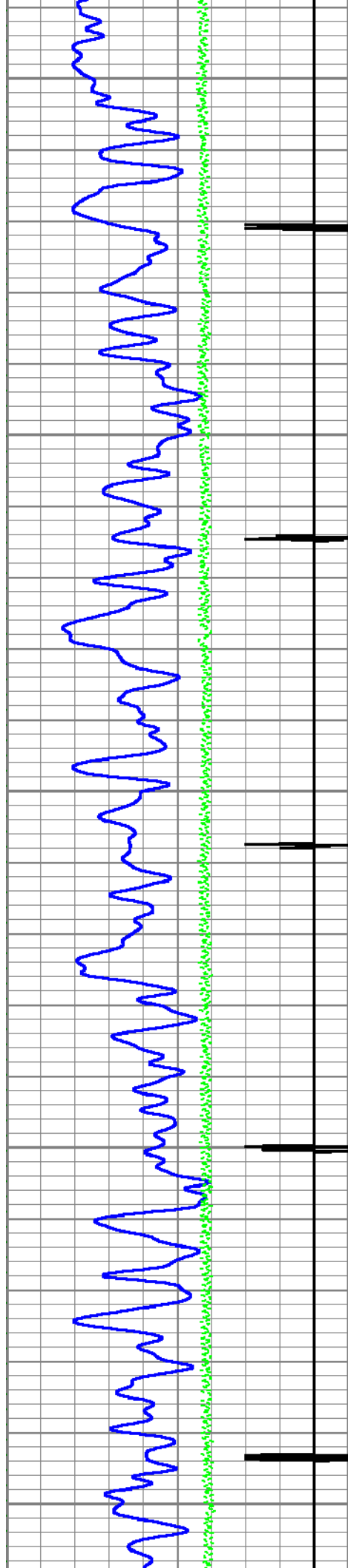




9300

9400

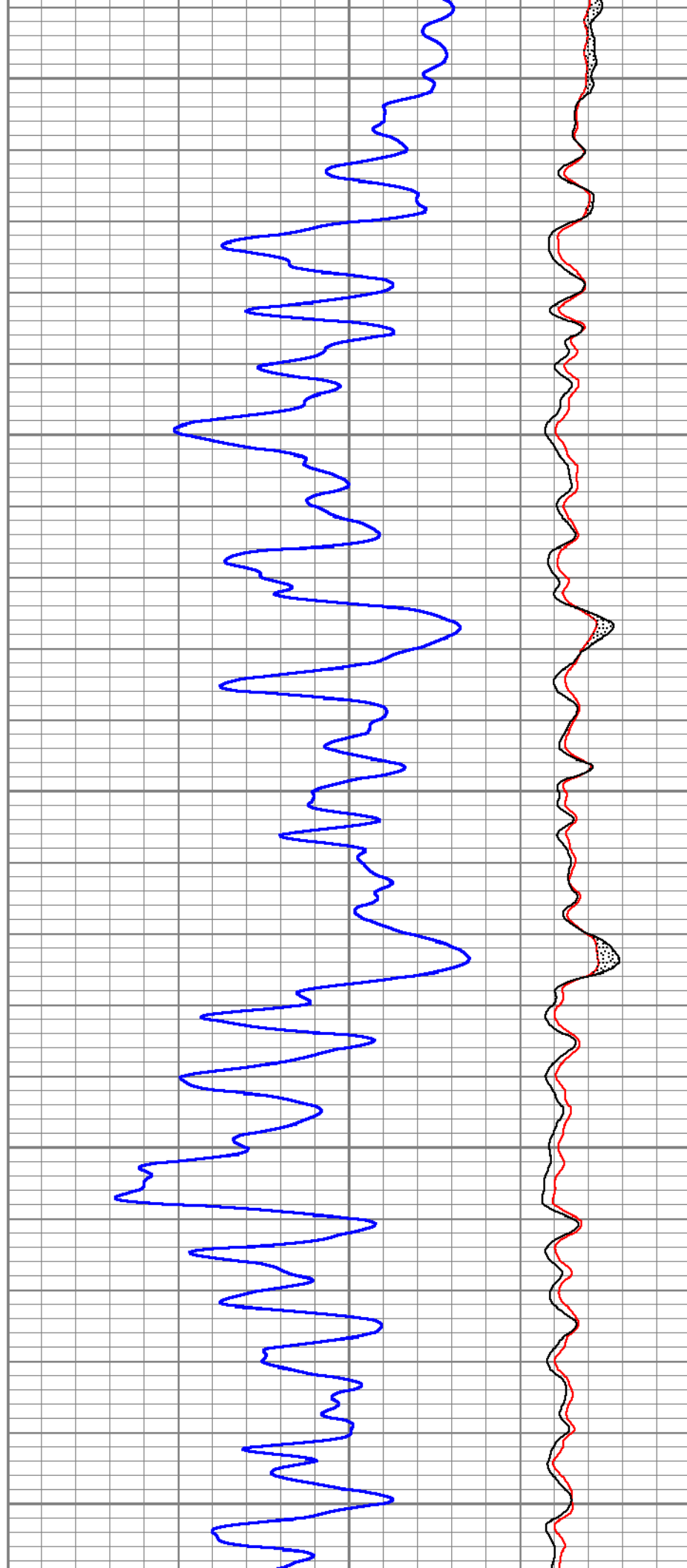


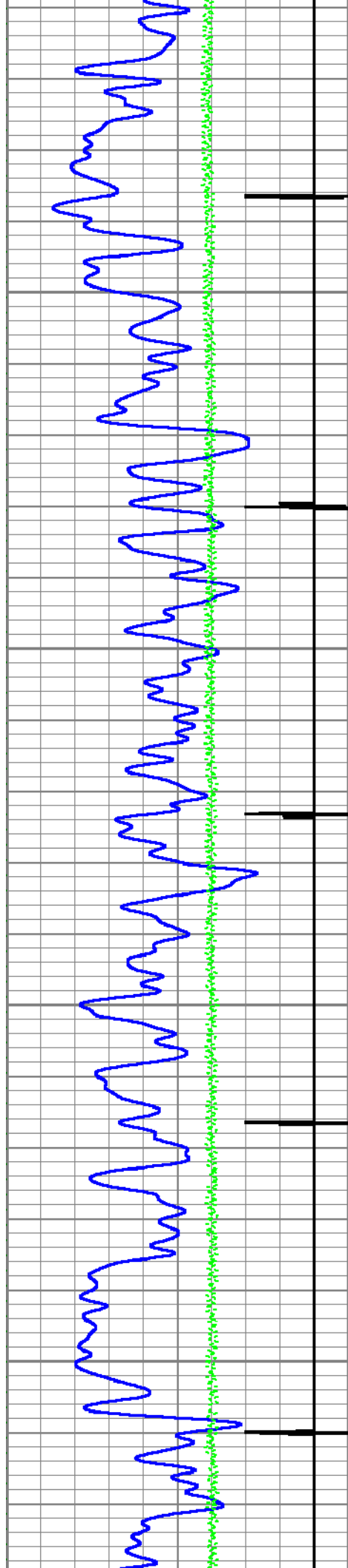


9500

9600

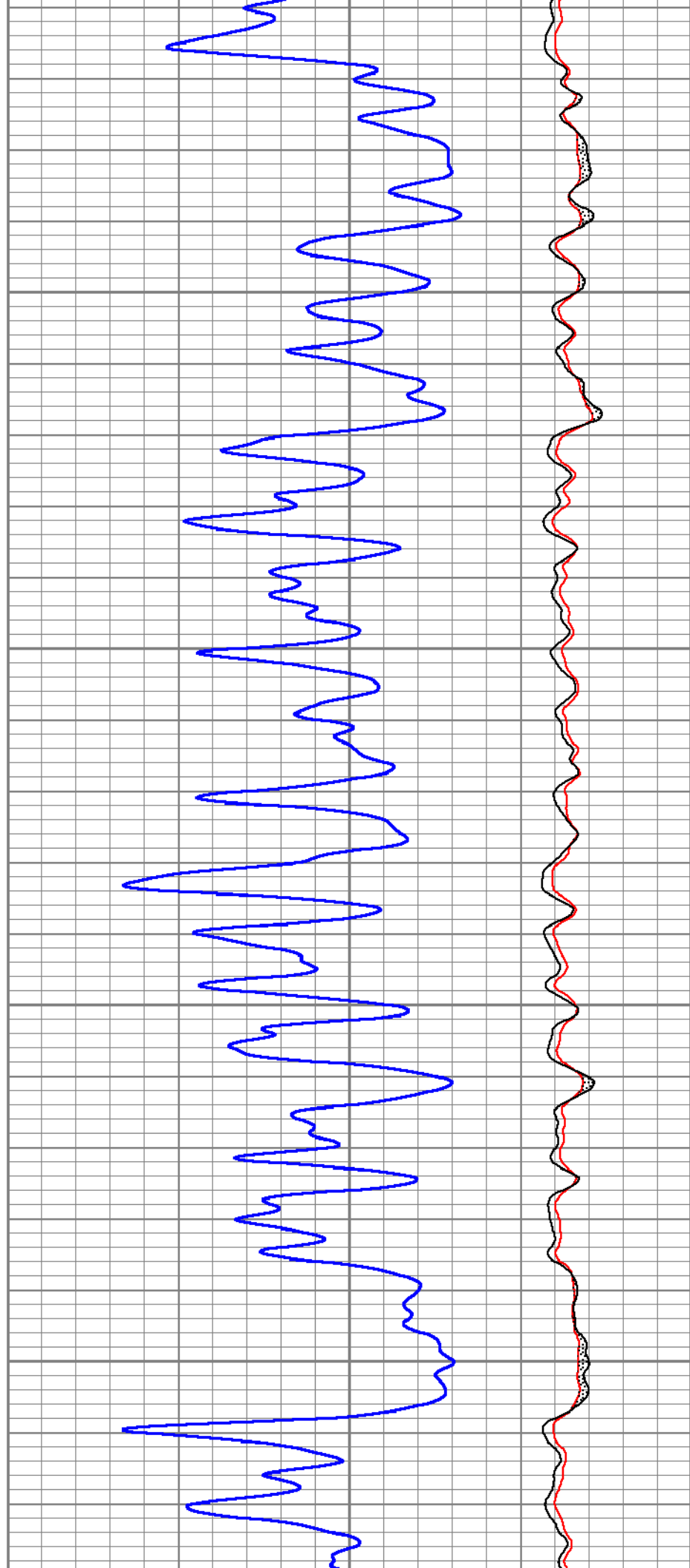
9700

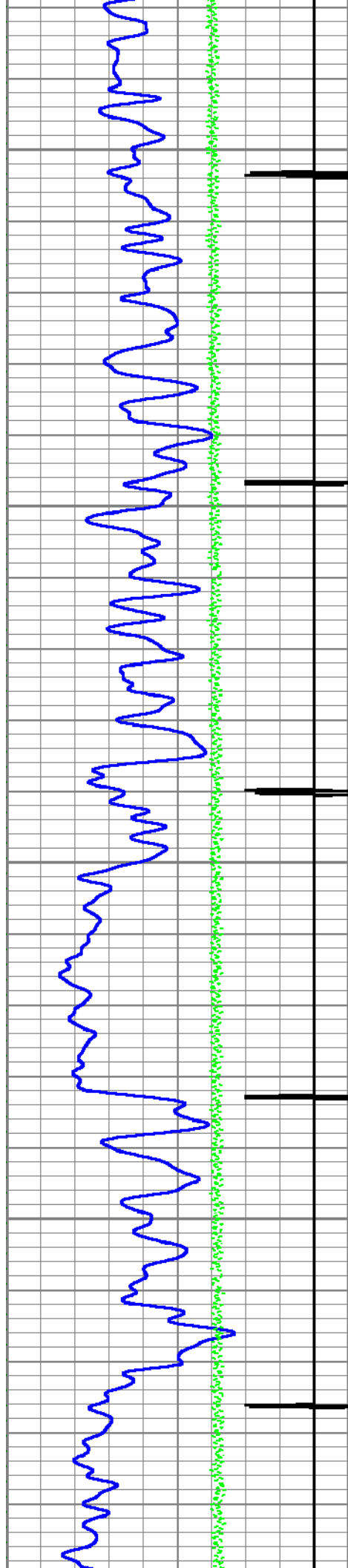




9800

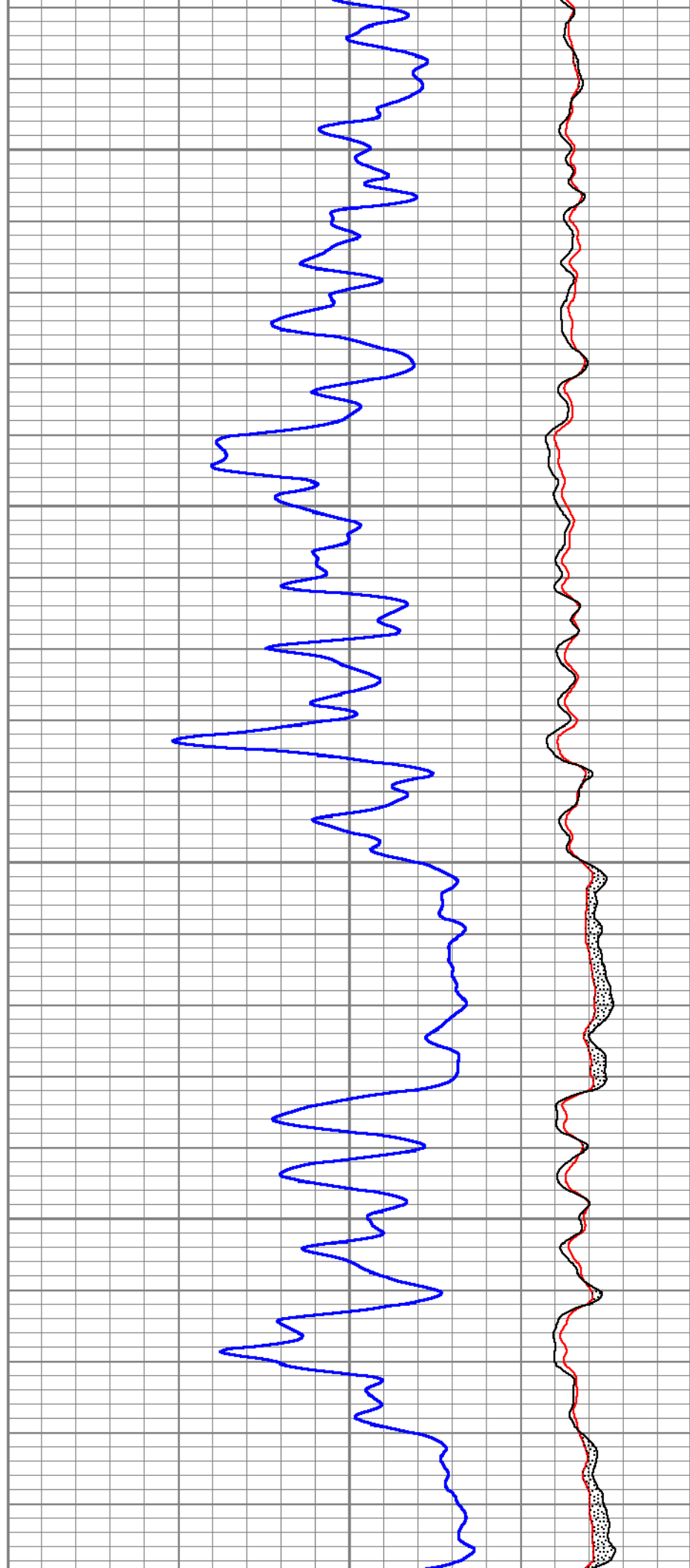
9900

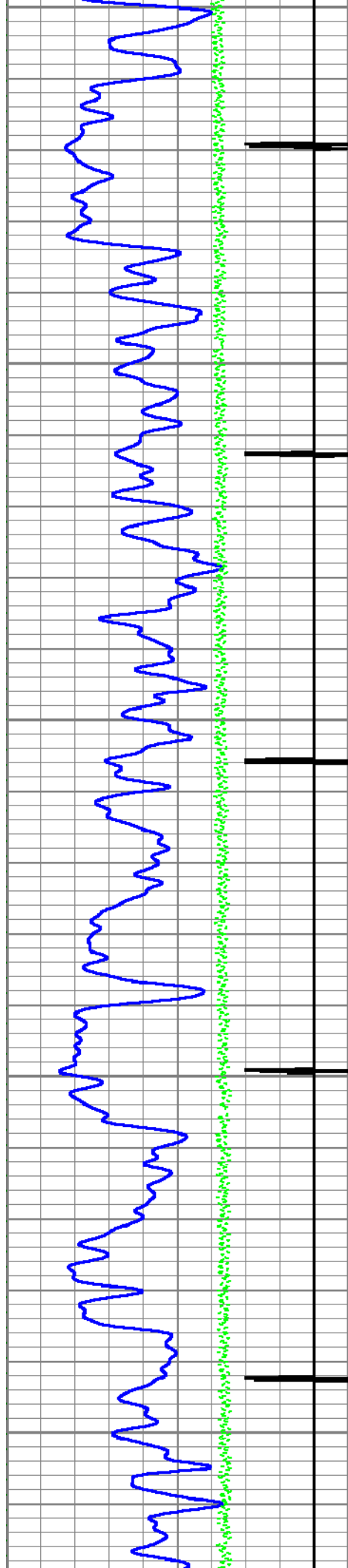




10000

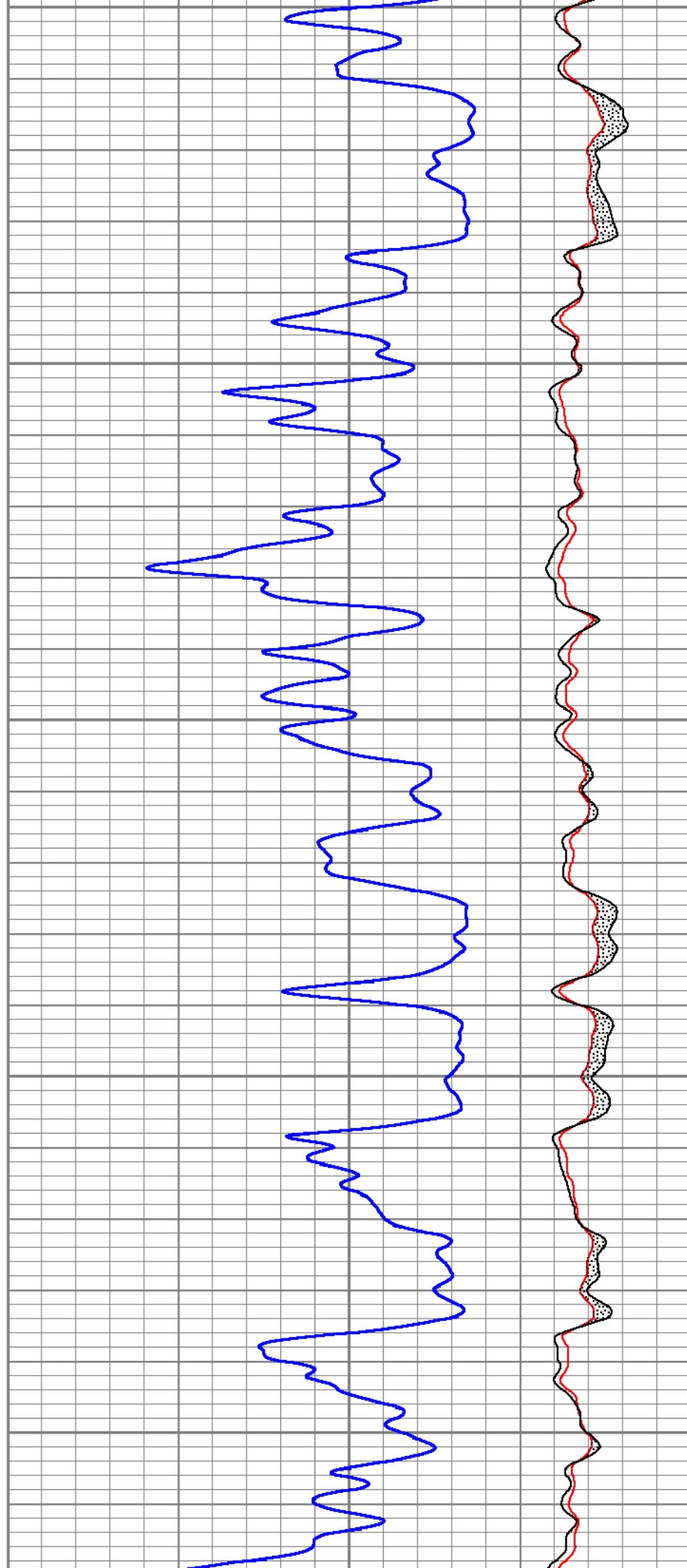
10100

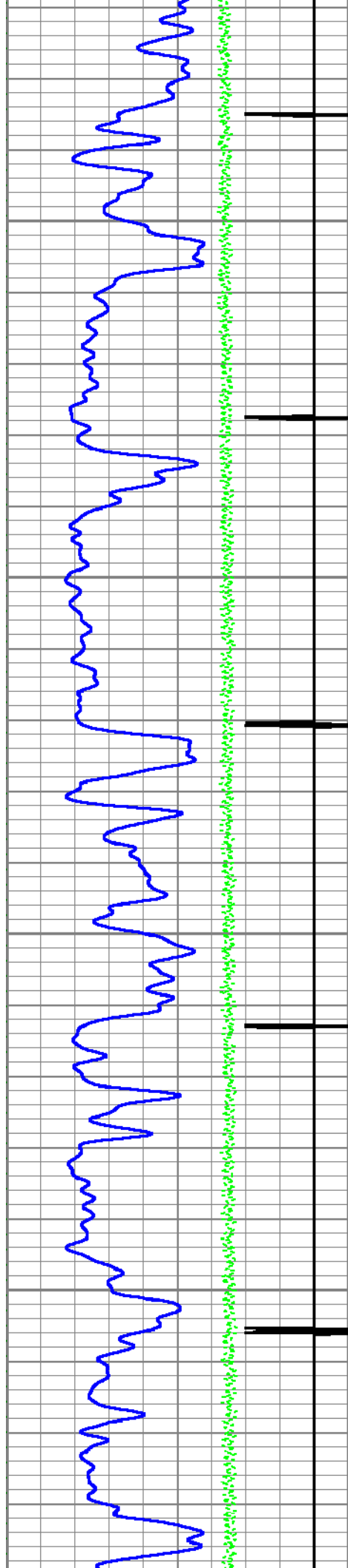




10200

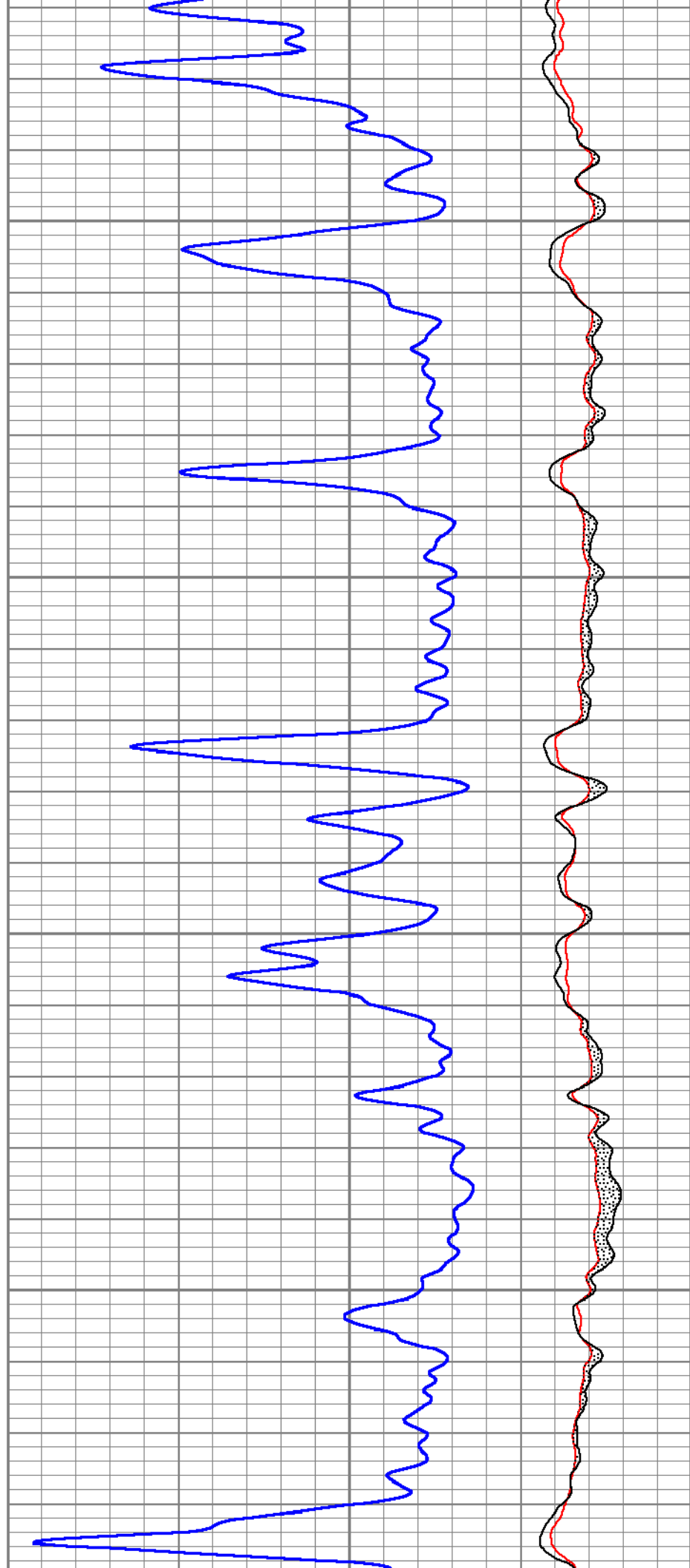
10300

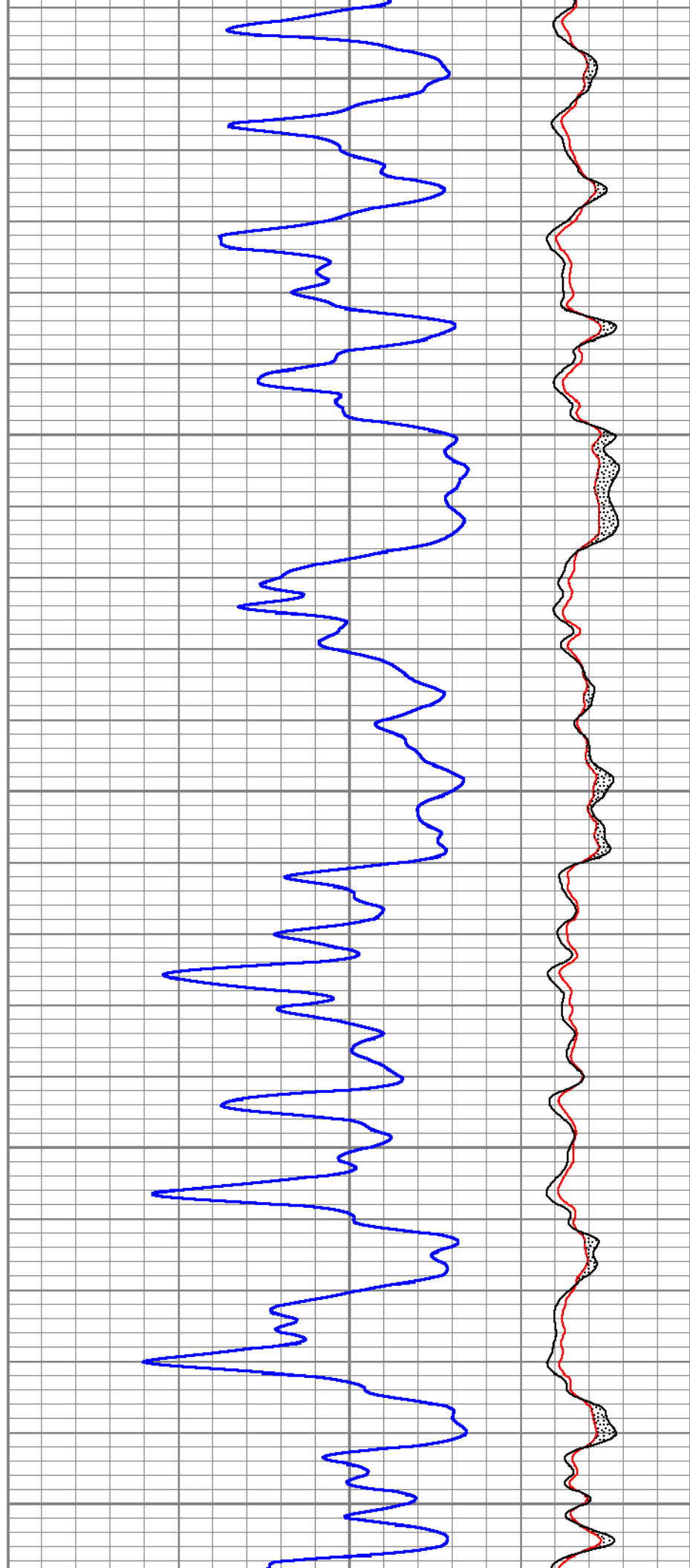
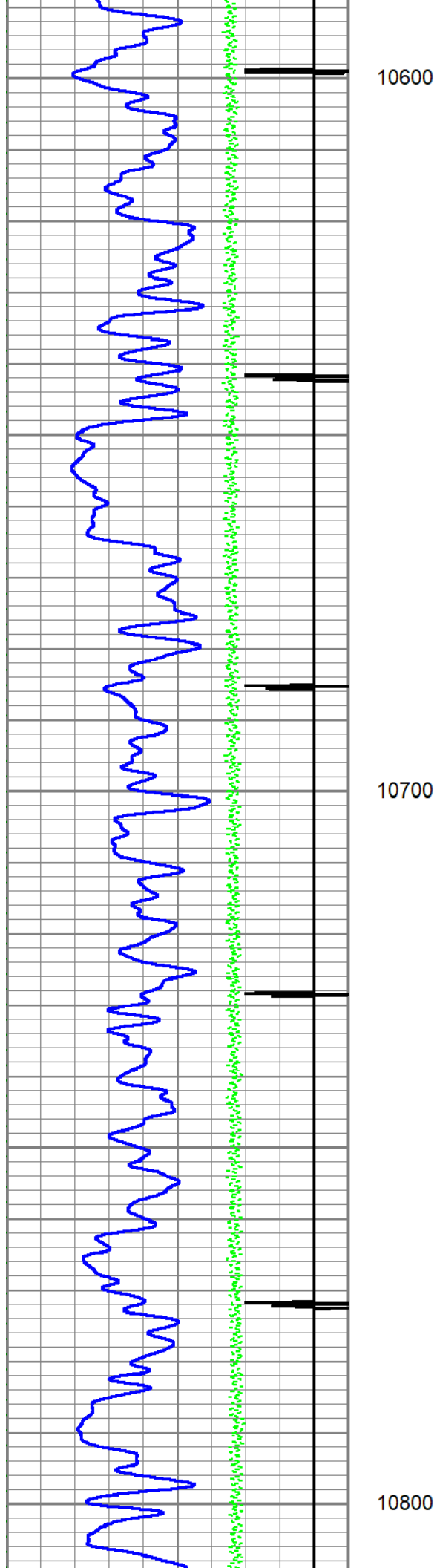


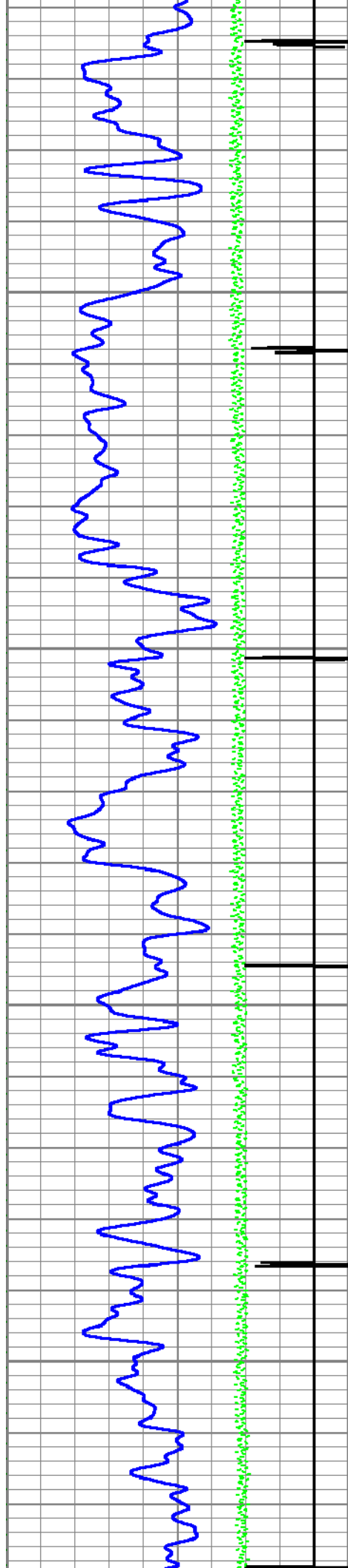


10400

10500

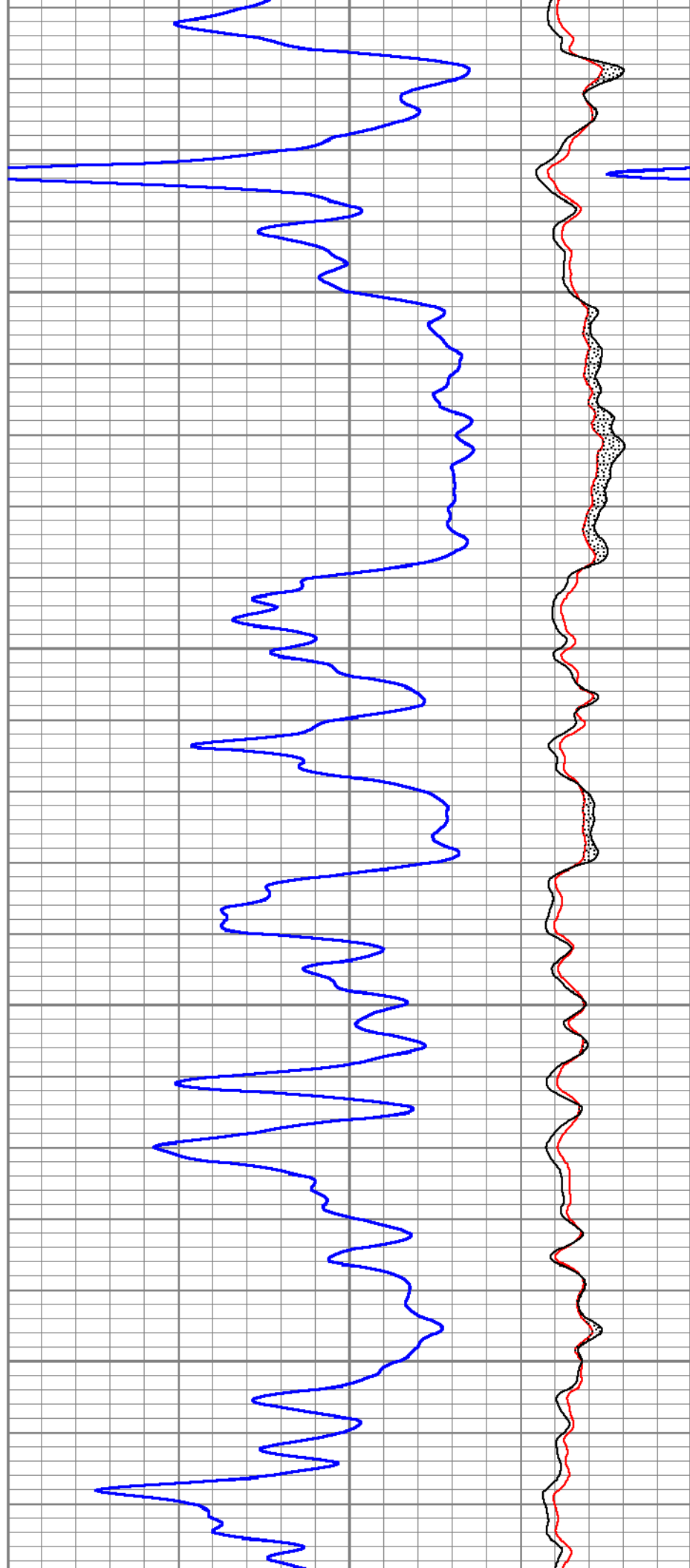


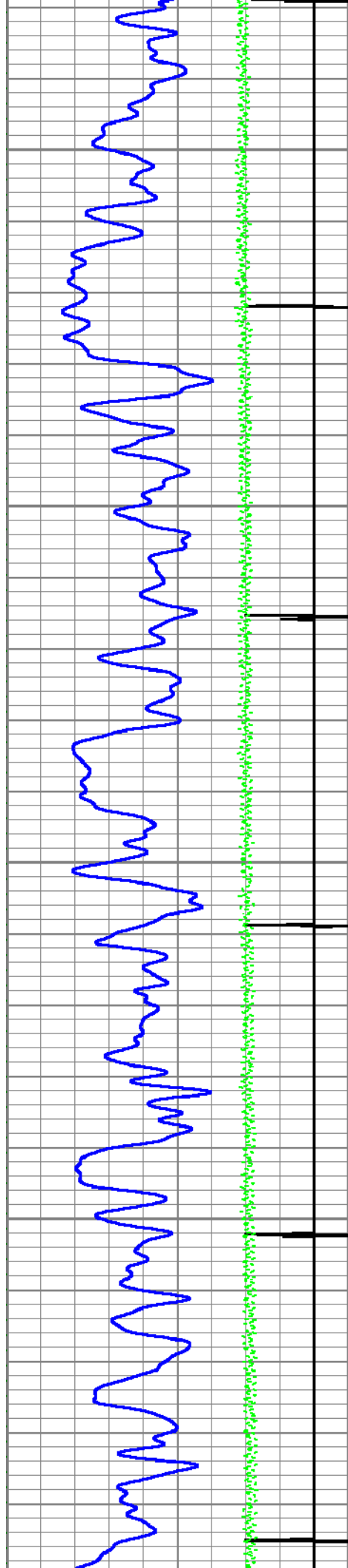




10900

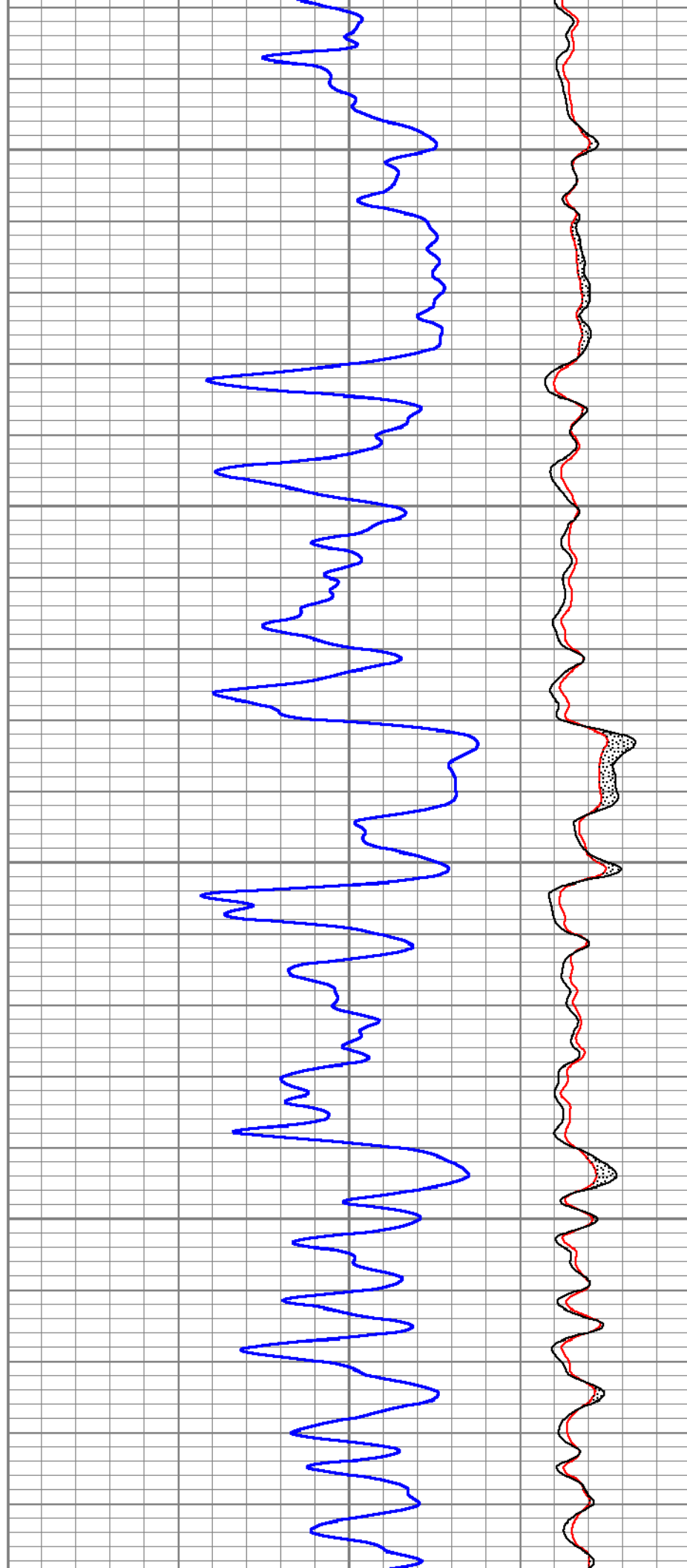
11000

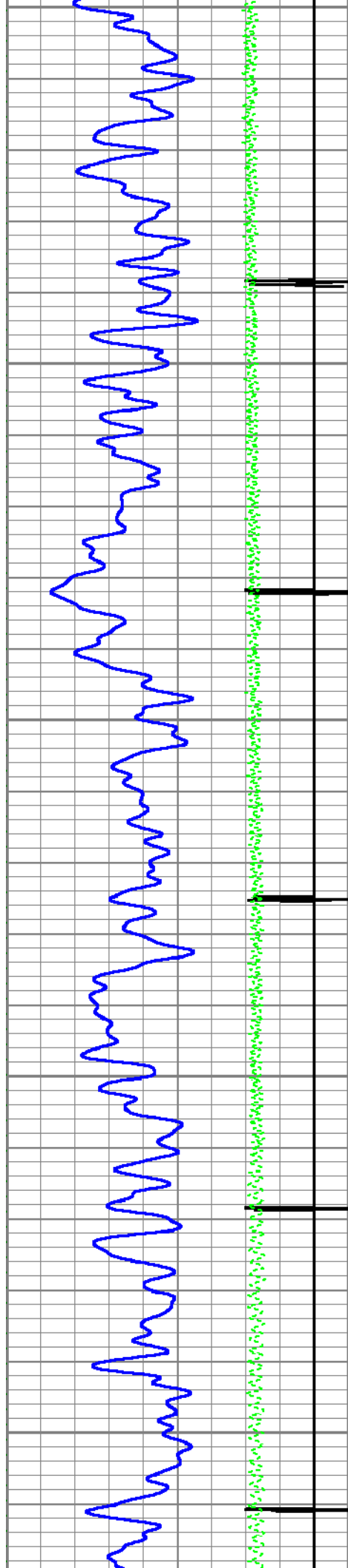




11100

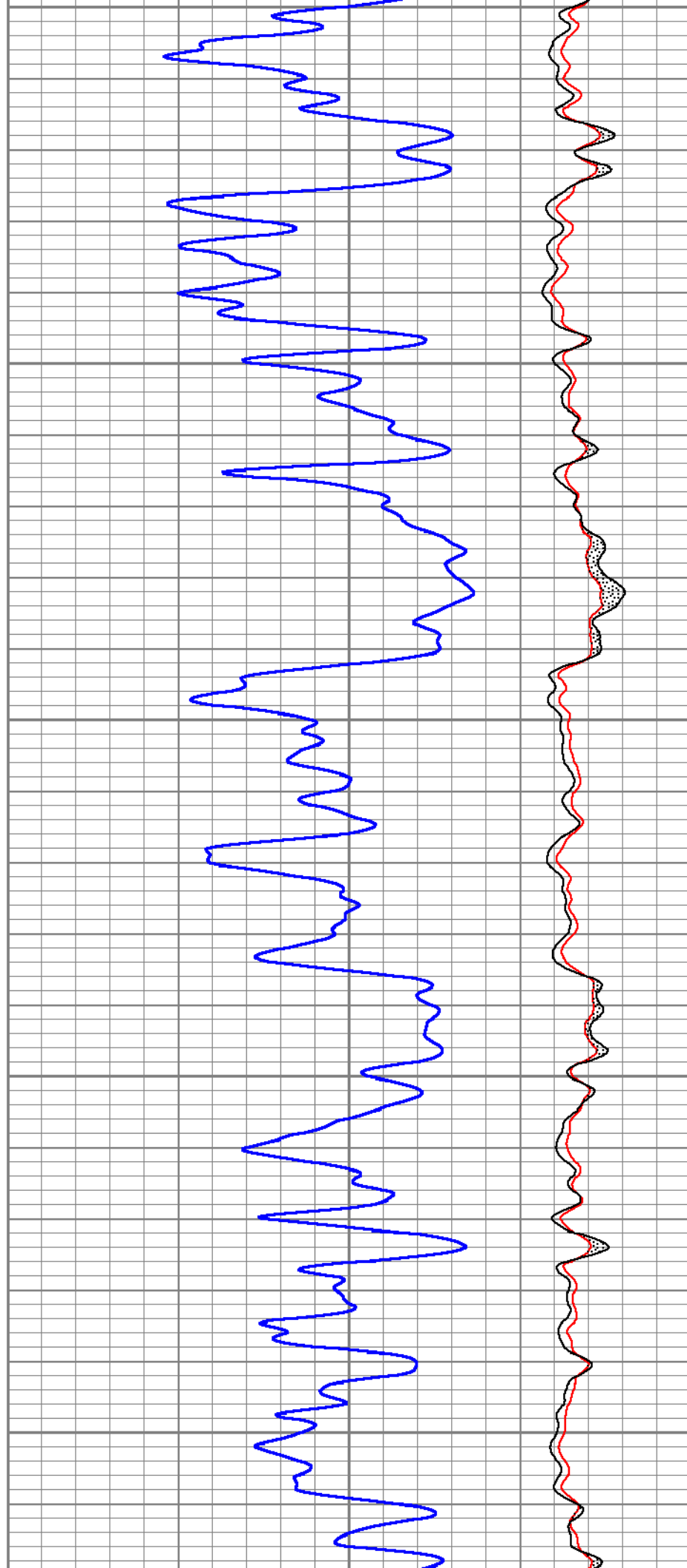
11200

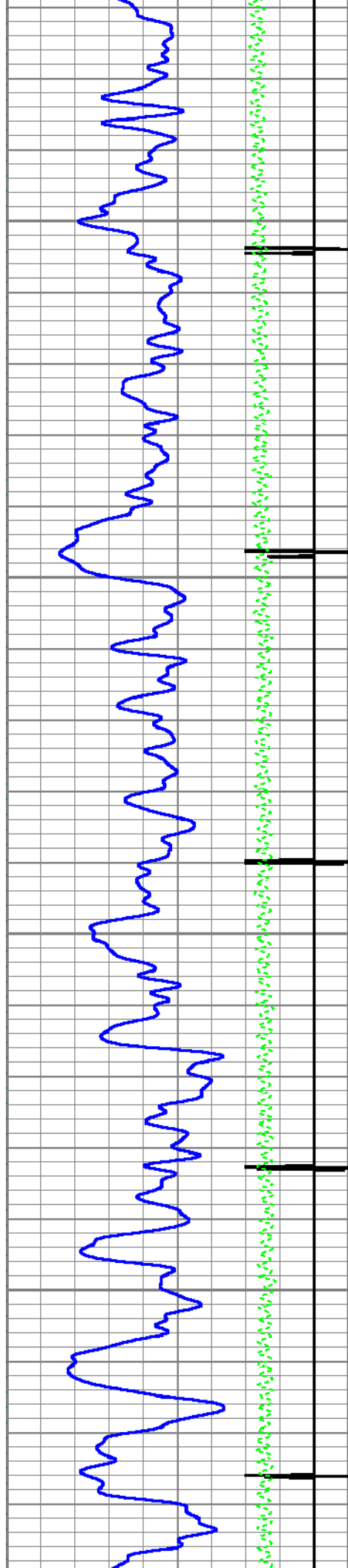




11300

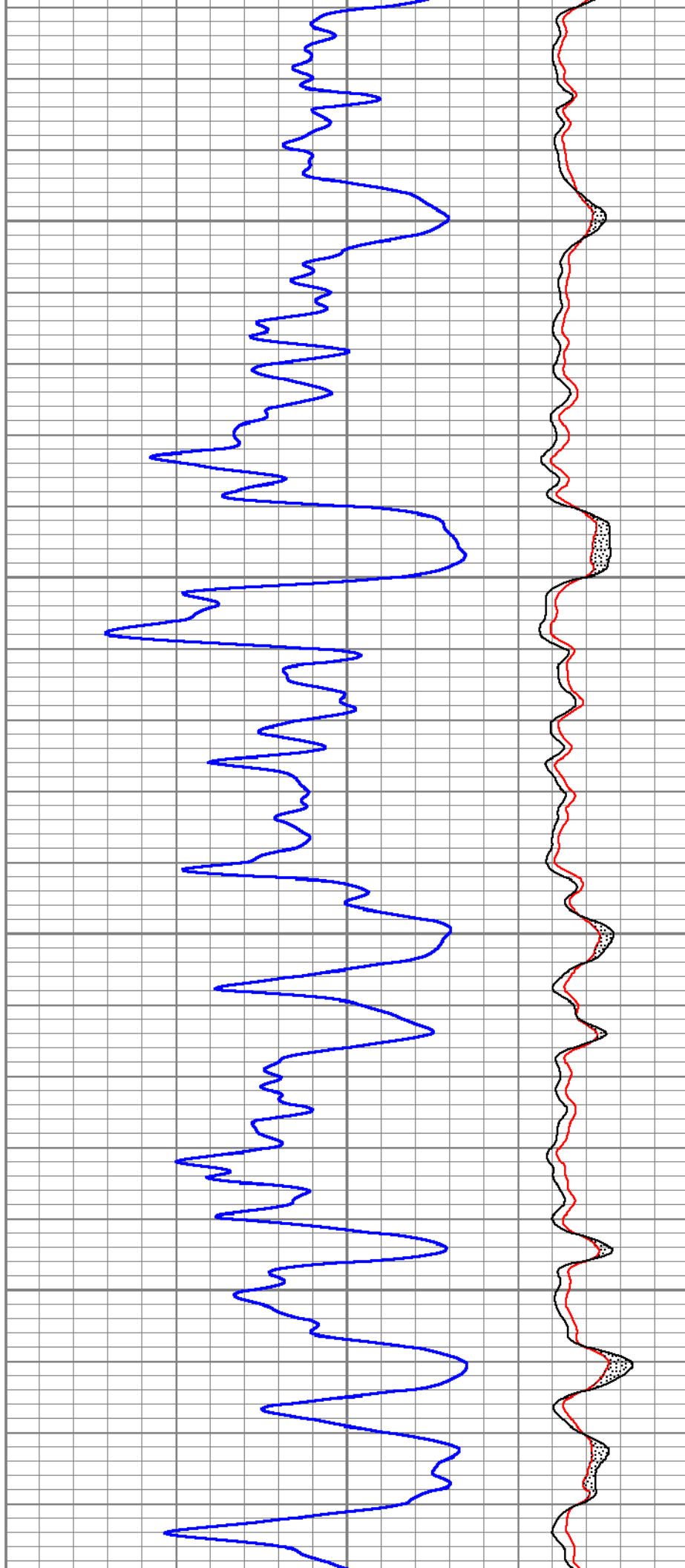
11400

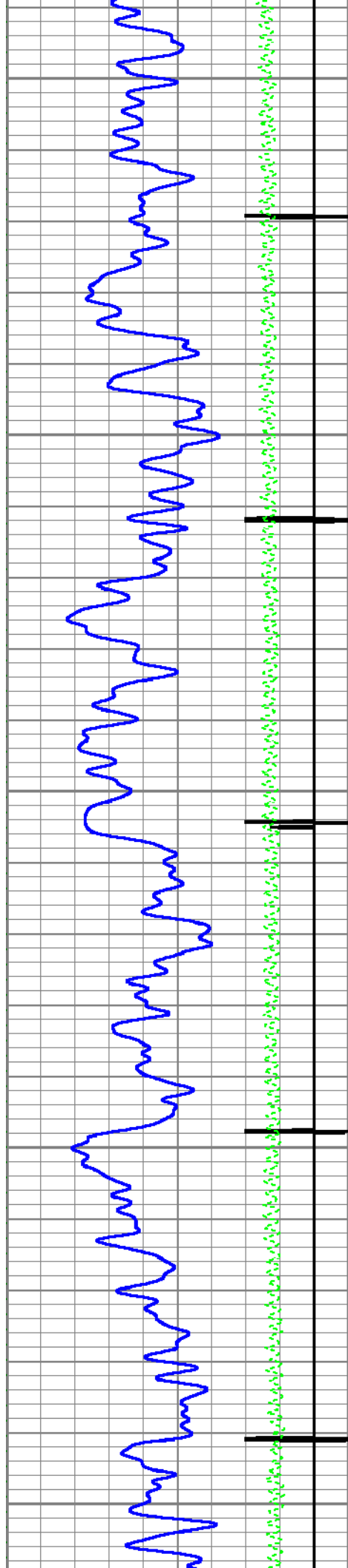




11500

11600

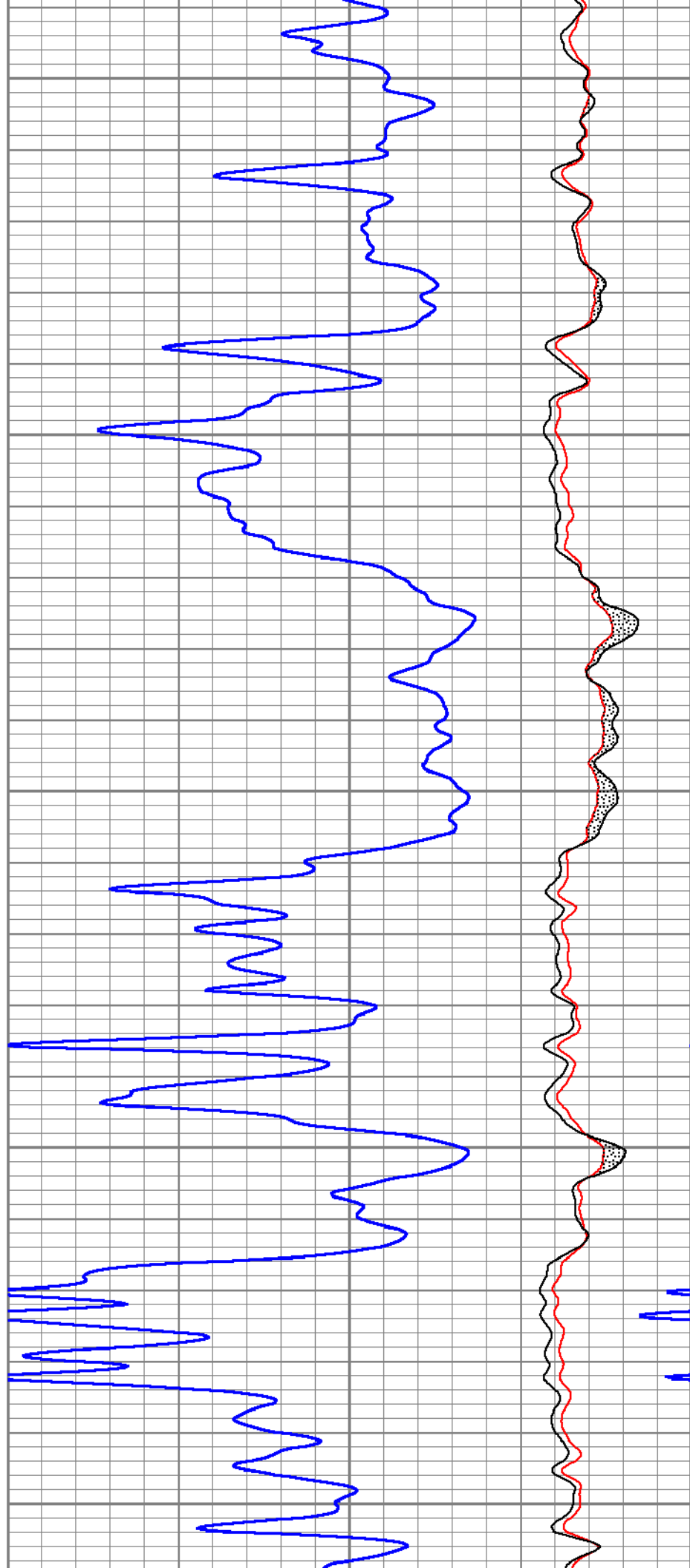


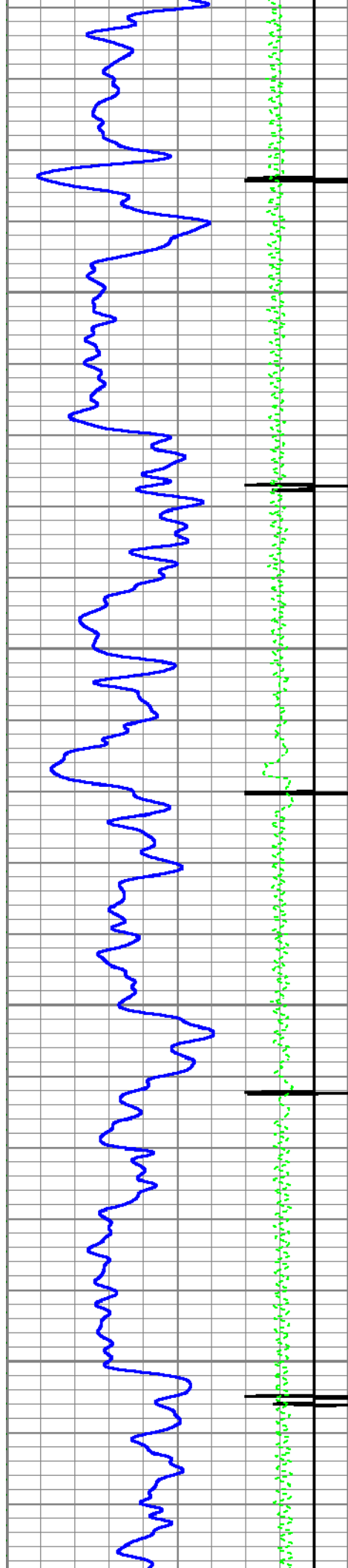


11700

11800

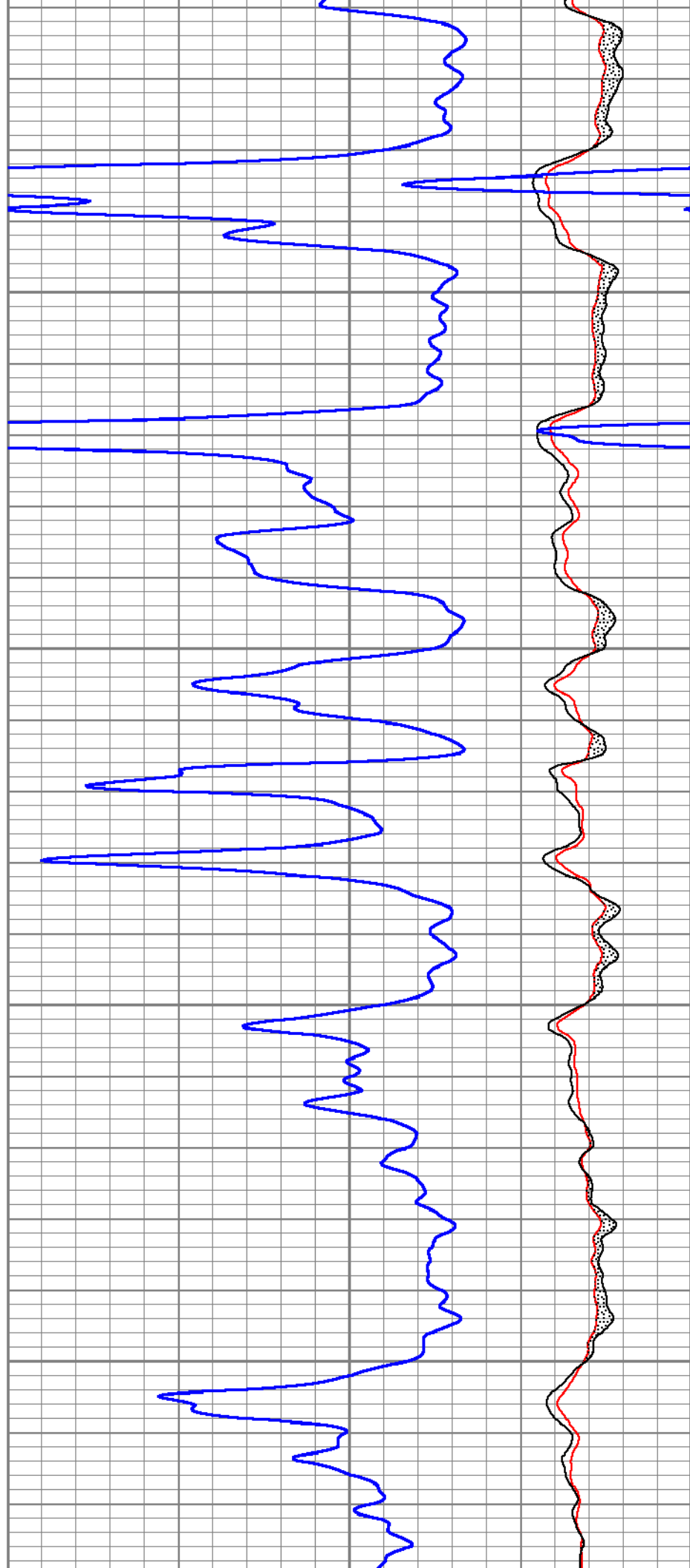
11900

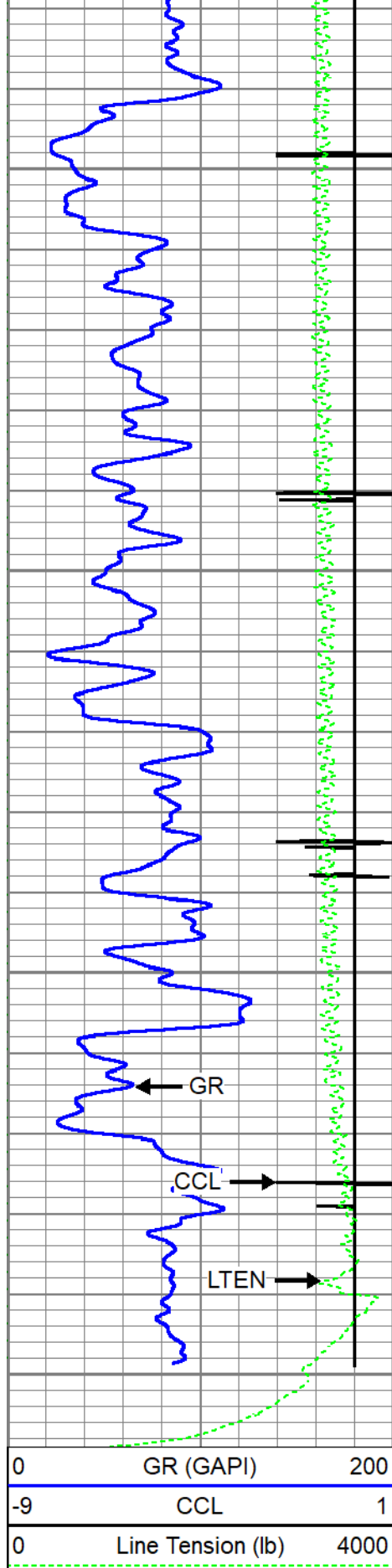




12000

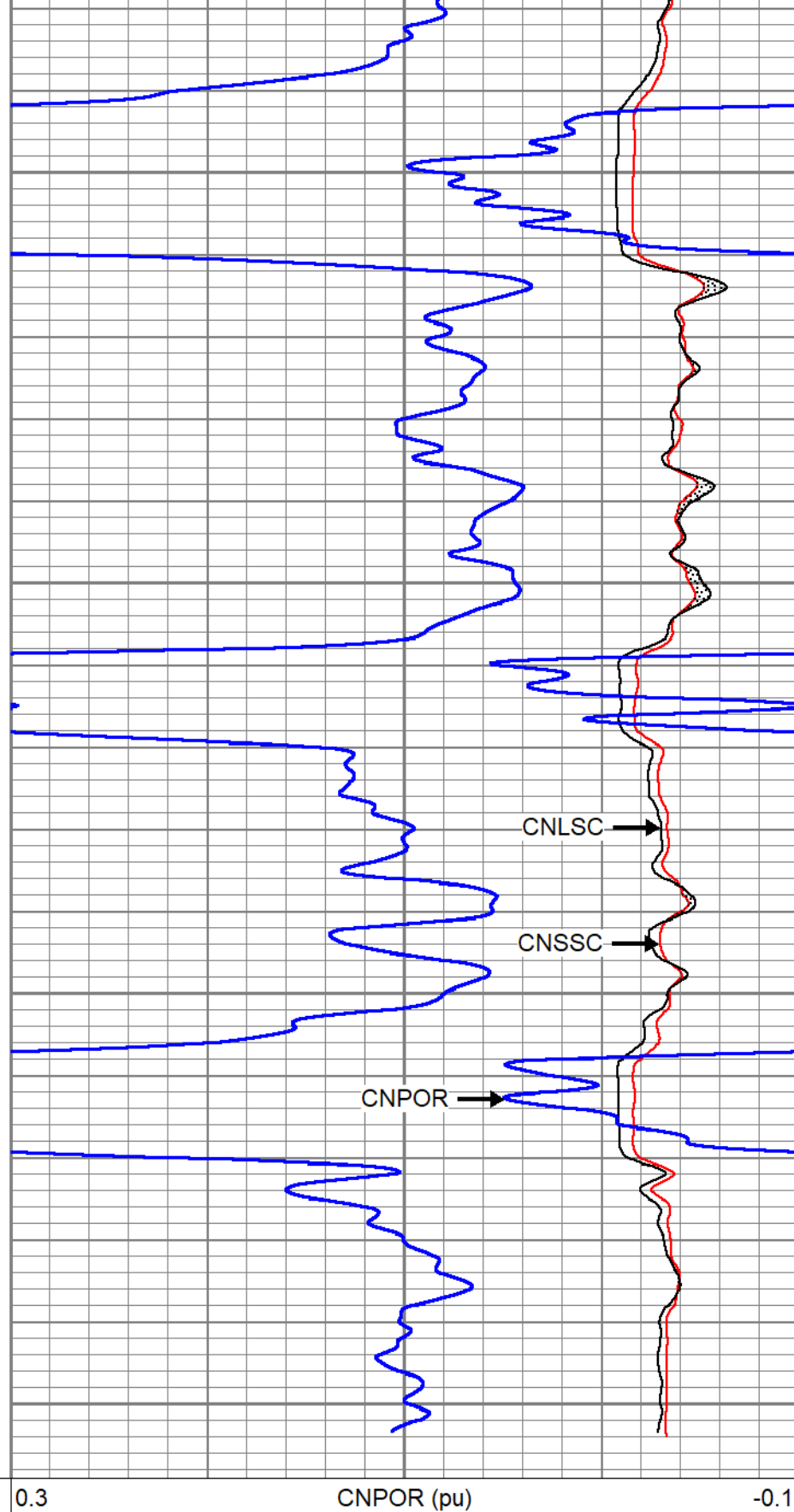
12100





12200

12300



CNLSC

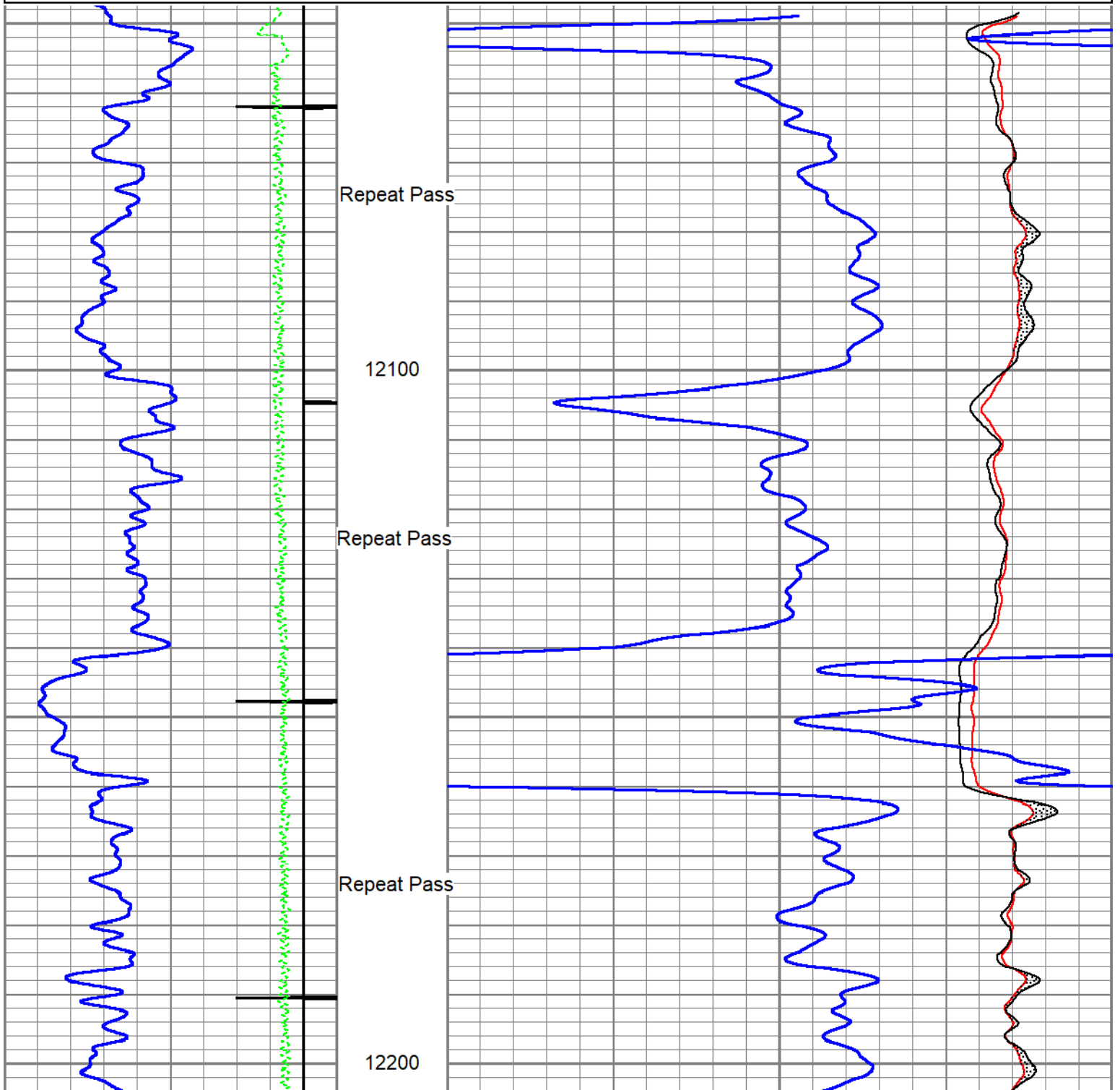
CNSSC

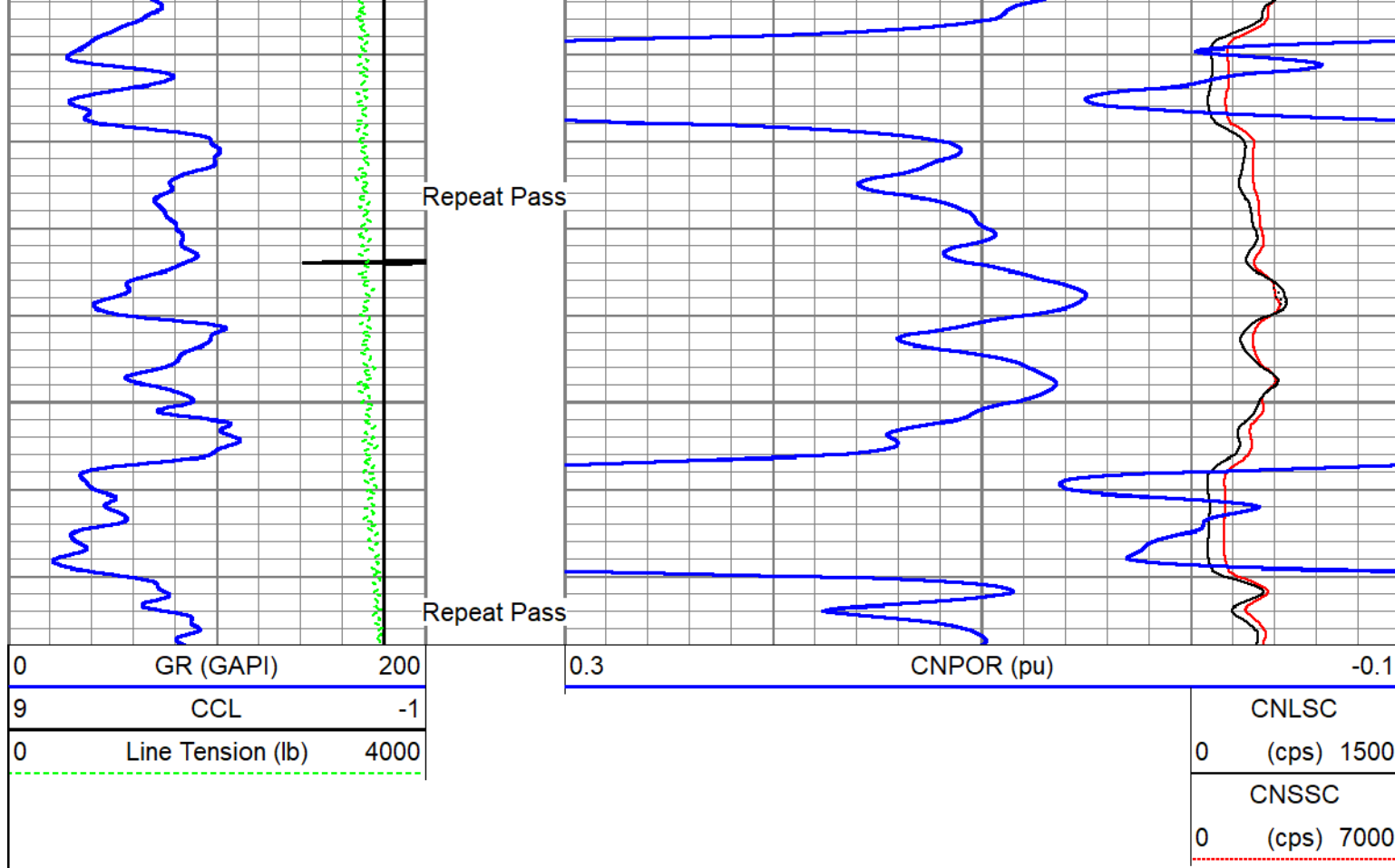
CNPOR

CNLSC		
0	(cps)	1500
CNSSC		
0	(cps)	7000

Database File caerus_bju b26 fed 23b-26-496_rcbl-cn1_12-27-2022.db
 Dataset Pathname repeat
 Presentation Format twg_cn1
 Dataset Creation Tue Dec 27 07:55:06 2022
 Charted by Depth in Feet scaled 1:240

0	GR (GAPI)	200	0.3	CNPOR (pu)	-0.1
9	CCL	-1			CNLSC
0	Line Tension (lb)	4000			0 (cps) 1500
					CNSSC
					0 (cps) 7000





Calibration Report				
Database File	caerus_bju b26 fed 23b-26-496_rcbl-cn1_12-27-2022.db			
Dataset Pathname	main			
Dataset Creation	Tue Dec 27 08:06:49 2022			
Compensated Neutron Calibration Report				
Model:		CNT - 275Dig		
Serial Number:		FW1409-35		
SHOP CALIBRATION		Thu Mar 31 15:47:13 2022		
	Cal Tube	Units		
Tank Ratio	11.6940	SS/LS		
LS Detector	68.71	cps		
SS Detector	748.49	cps		
Tool Ratio	10.8929	SS/LS		
Tool Gain	1.0735	----		
PRE-SURVEY VERIFICATION				
	SS Detector	LS Detector	Measured (p.u.)	Target (p.u.)
POST-SURVEY VERIFICATION				
	SS Detector	LS Detector	Measured (p.u.)	Target (p.u.)

Gamma Ray Calibration Report

Serial Number: 110255
 Tool Model: GCTacc_6-Pin-Base
 Performed: Thu Sep 22 15:12:49 2022

 Calibrator Value: 165.0 GAPI

 Background Reading: 72.3 cps
 Calibrator Reading: 300.9 cps

 Sensitivity: 0.7216 GAPI/cps

Inclinometer Calibration Report

Performed: Thu Sep 22 15:14:31 2022

	Low Read.	High Read.	Low Ref.	High Ref.	
X Accelerometer	-910.00	1566.00	-1.00	1.00	gee
Y Accelerometer	-989.00	1748.00	-1.00	1.00	gee
Z Accelerometer	1.02	-895.47	0.00	1.00	gee

Segmented Cement Bond Log Calibration Report

Serial Number: FW1311-19
 Tool Model: Probe275acc

 Calibration Casing Diameter: 4.500 in
 Calibration Depth: 38.237 ft

Master Calibration, performed Thu Dec 22 08:35:22 2022:

	Raw (v)		Calibrated (mv)		Results	
	Zero	Cal	Zero	Cal	Gain	Offset
3'	0.006	0.750	0.800	81.196	108.042	0.130
CAL	0.002	0.760				
5'	0.015	0.701	0.800	81.196	117.073	-0.921
SUM						
S1	0.007	0.754	0.000	100.000	134.009	-1.003
S2	0.007	0.757	0.000	100.000	133.390	-0.985
S3	0.006	0.767	0.000	100.000	131.461	-0.782
S4	0.007	0.761	0.000	100.000	132.784	-0.989
S5	0.009	0.755	0.000	100.000	133.981	-1.204
S6	0.006	0.747	0.000	100.000	135.070	-0.838
S7	0.007	0.752	0.000	100.000	134.071	-0.884
S8	0.007	0.743	0.000	100.000	135.879	-0.912

Internal Reference Calibration, performed (Not Performed):

	Raw (v)		Calibrated (v)		Results	
	Zero	Cal	Zero	Cal	Gain	Offset

CAL	0.000	0.000	0.002	0.760	1.000	0.000
Air Zero Calibration, performed Thu Dec 22 08:34:24 2022:						
	Raw (v)		Calibrated (v)		Results	
	Zero		Zero		Offset	
3'	0.000		0.000		0.000	
5'	0.000		0.000		0.000	
SUM						
S1	0.000		0.000		0.000	
S2	0.000		0.000		0.000	
S3	0.000		0.000		0.000	
S4	0.000		0.000		0.000	
S5	0.000		0.000		0.000	
S6	0.000		0.000		0.000	
S7	0.000		0.000		0.000	
S8	0.000		0.000		0.000	

Inclinometer Calibration Report						
Performed:	Thu Jul 28 15:55:38 2022					
	Low Read.	High Read.	Low Ref.	High Ref.		
X Accelerometer	-914.00	901.00	-1.00	1.00	gee	
Y Accelerometer	-903.00	898.00	-1.00	1.00	gee	
Z Accelerometer	3.47	893.02	0.00	1.00	gee	

Sensor	Offset (ft)	Schematic	Description	Length (ft)	O.D. (in)	Weight (lb)
GCT_FMWR	19.32					
mSec_Count	19.32					
RBT_Status	19.32					
Error_Ct	19.32					
			SO BS CENT-2750-4500 Slip Over 2-3/4" I.D. for 4-1/2" O.D. Casing Bow Spring Centralizer	1.33	3.25	10.00
WVFS8	14.82		RBT8acc-Probe275acc (FW1311-19) 2.75" Radial Corrosion with accelerometer	8.75	2.75	110.00
WVFS7	14.82					
WVFS6	14.82					
WVFS5	14.82					
WVFS4	14.82					
WVFS3	14.82					
WVFS2	14.82					
WVFS1	14.82					
WVF3FT	14.82					
WVF5FT	13.82					
GCT HV	10.95					

Tool Joint	Tool Joint Depth (ft)	Tool Joint Description	Tool Joint Length (ft)	Tool Joint Weight (lb)	Tool Joint O.D. (in)
RBT_ACCZ	10.57				
RBT_ACCY	10.57				
RBT_ACCX	10.57				
WVFSYNC	10.57				
WVFCAL	10.57				
CCL\$2	9.96				
CCL\$1	9.96				
GCT_TEMP	9.08				
GR	8.28				
GCT_IntTemp	7.24				
		SO BS CENT-2750-4500 Slip Over 2-3/4" I.D. for 4-1/2" O.D. Casing Bow Spring Centralizer	1.33	3.25	10.00
		GCacc-GCTacc_6-Pin-Base (110255) Probe 2.75" Gamma Ray - CCL w/ Temp and 6 Pin Bottom	5.00	2.75	
GCT_ACCZ	5.57				
GCT_ACCY	5.57				
GCT_ACCX	5.57				
		CNT-275Dig (FW1409-35) Probe Digital CNL	5.24	2.75	40.00
CNLSC	2.24				
CNSSC	1.81				
		SO BS CENT-2750-4500 Slip Over 2-3/4" I.D. for 4-1/2" O.D. Casing Bow Spring Centralizer	1.33	3.25	10.00
		Plug-FA108-0000 1.38" Bull Plug	0.33	1.38	1.00
Dataset: caerus_bju b26 fed 23b-26-496_rcbl-cn1_12-27-2022.db: field/well/run1/main Total length: 19.32 ft Total weight: 181.00 lb O.D.: 3.25 in					