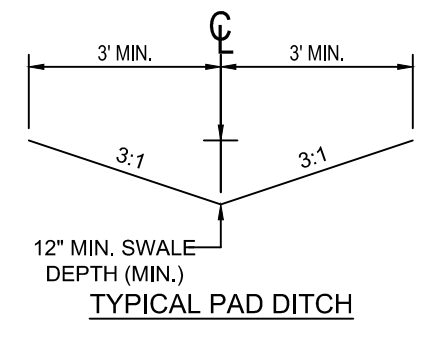
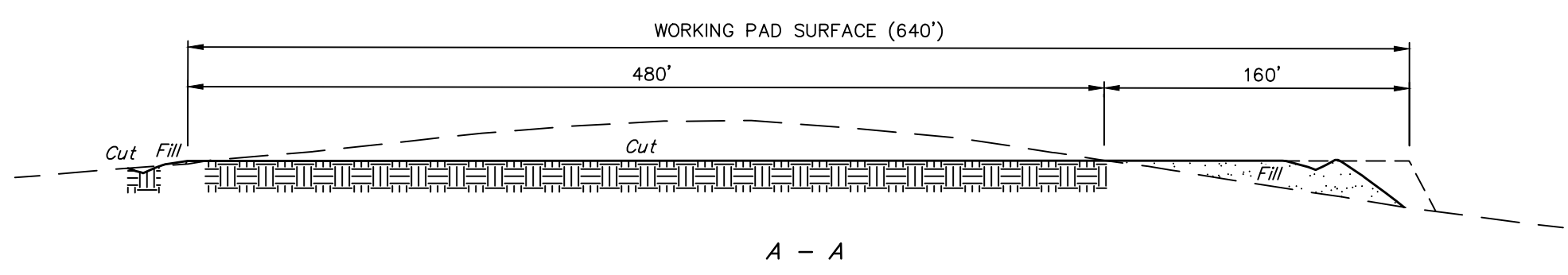
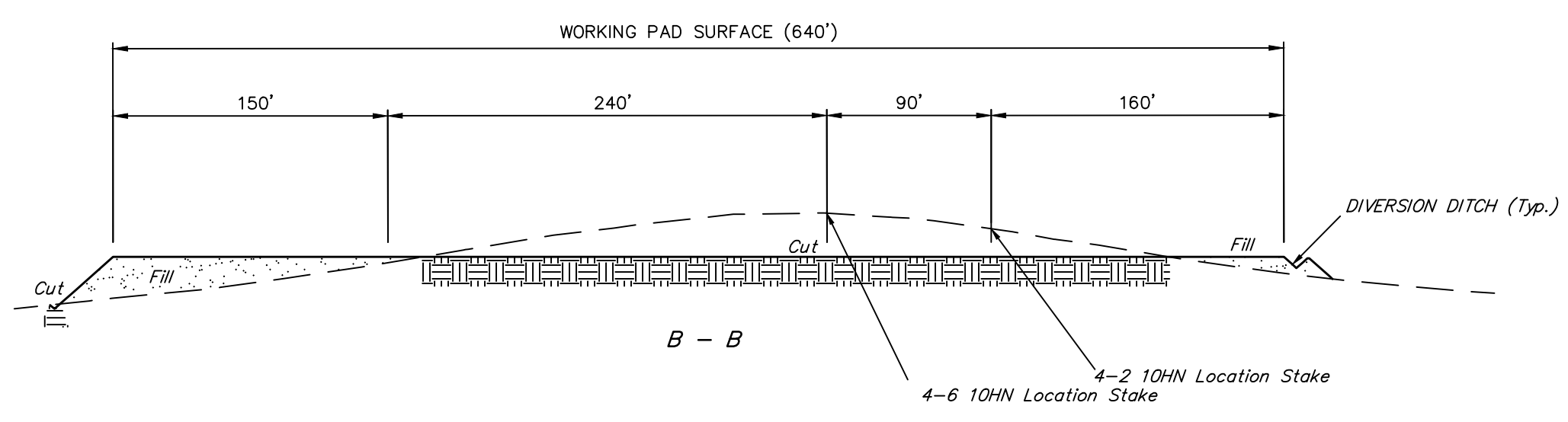
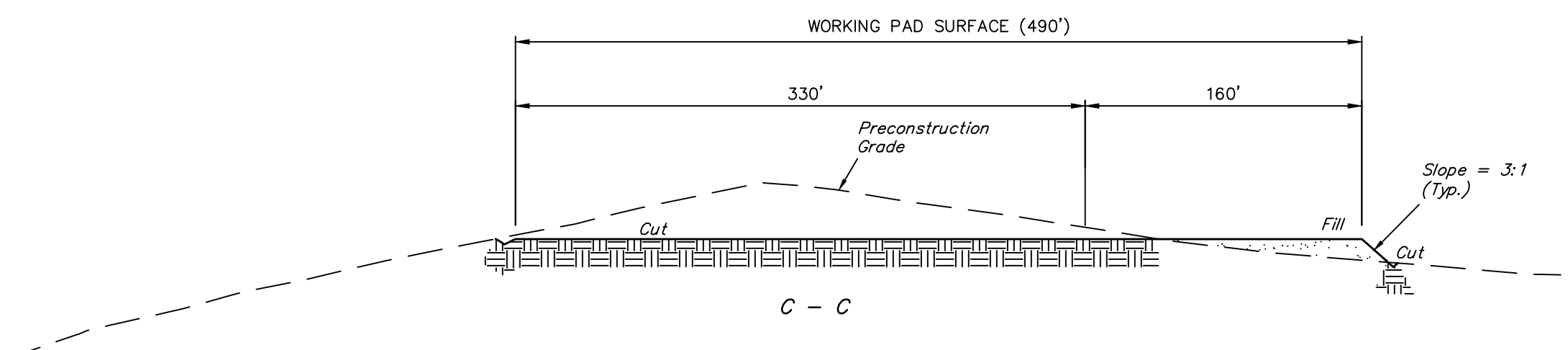
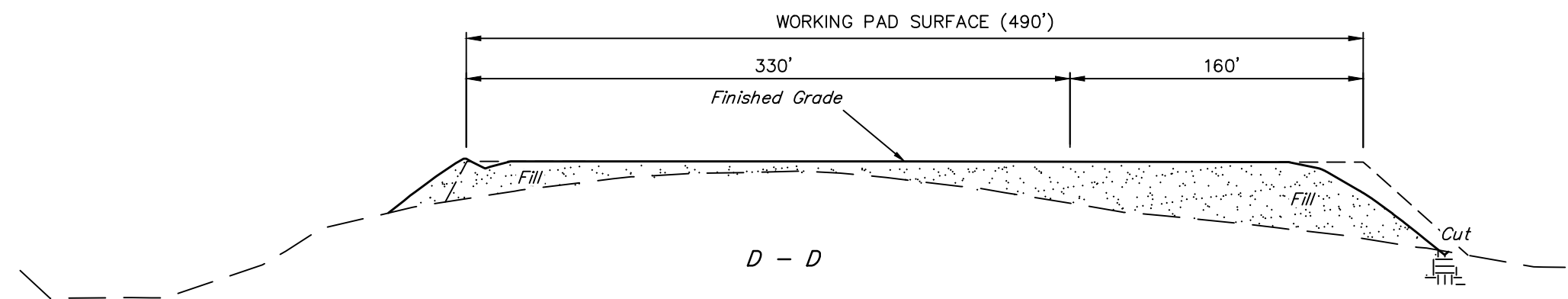
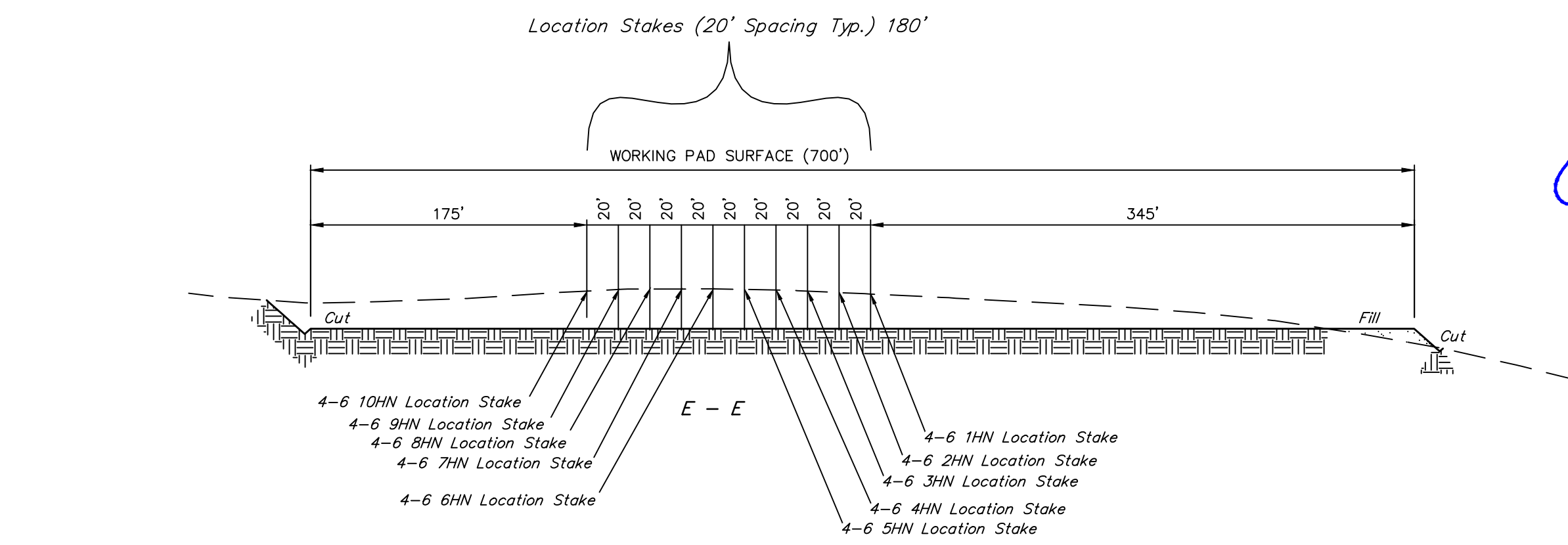


1" = 30'
X-Section
Scale
1" = 80'



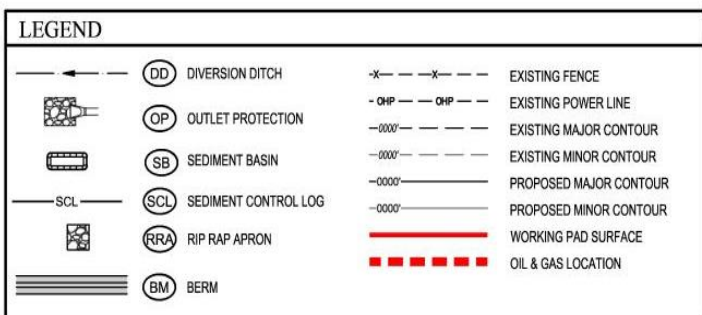
APPROXIMATE EARTHWORK QUANTITIES	
(12") TOPSOIL STRIPPING	17,940 Cu. Yds.
REMAINING LOCATION	43,800 Cu. Yds.
TOTAL CUT	61,740 Cu. Yds.
FILL	43,800 Cu. Yds.
EXCESS MATERIAL	17,940 Cu. Yds.
TOPSOIL	17,940 Cu. Yds.
EXCESS UNBALANCE	0 Cu. Yds.

APPROXIMATE WELL SITE DISTURBANCE AREAS	
WORKING PAD SURFACE DISTURBANCE	±9.055
CONSTRUCTION DISTURBANCE	±6.843
TOTAL OIL & GAS LOCATION	±15.898

APPROXIMATE SURFACE DISTURBANCE AREAS		
	DISTANCE	ACRES
TOTAL OIL & GAS LOCATION	NA	±15.898
60' WIDE ACCESS ROAD R-O-W DISTURBANCE	±825'	±1.136
TOTAL SURFACE USE AREA		±17.034

NOTES:

- Fill quantity includes 10% for compaction.
- Calculations based on 12" of topsoil stripping.
- Cut/Fill slopes 3:1 (Typ.).



- a) Drilling Rig and Catwalk
- b) Drilling Rig Control Room (Dog House)
- c) Pump House
- d) Generators / Fuel Tanks and associated secondary containment
- e) Drilling Mud Tanks and associated secondary containment
- f) Potable Water Tank
- g) Non-Potable Water Tanks and associated secondary containment
- h) Cuttings Management Areas, Cuttings Trenches, Containment Equipment and associated secondary containment
- i) Flare Stack
- j) Site Security and Exclusionary Features
- k) Pipe Racks (optional)
- l) Parts and Drill Bit Storage (optional)
- m) Support Trailers (optional)



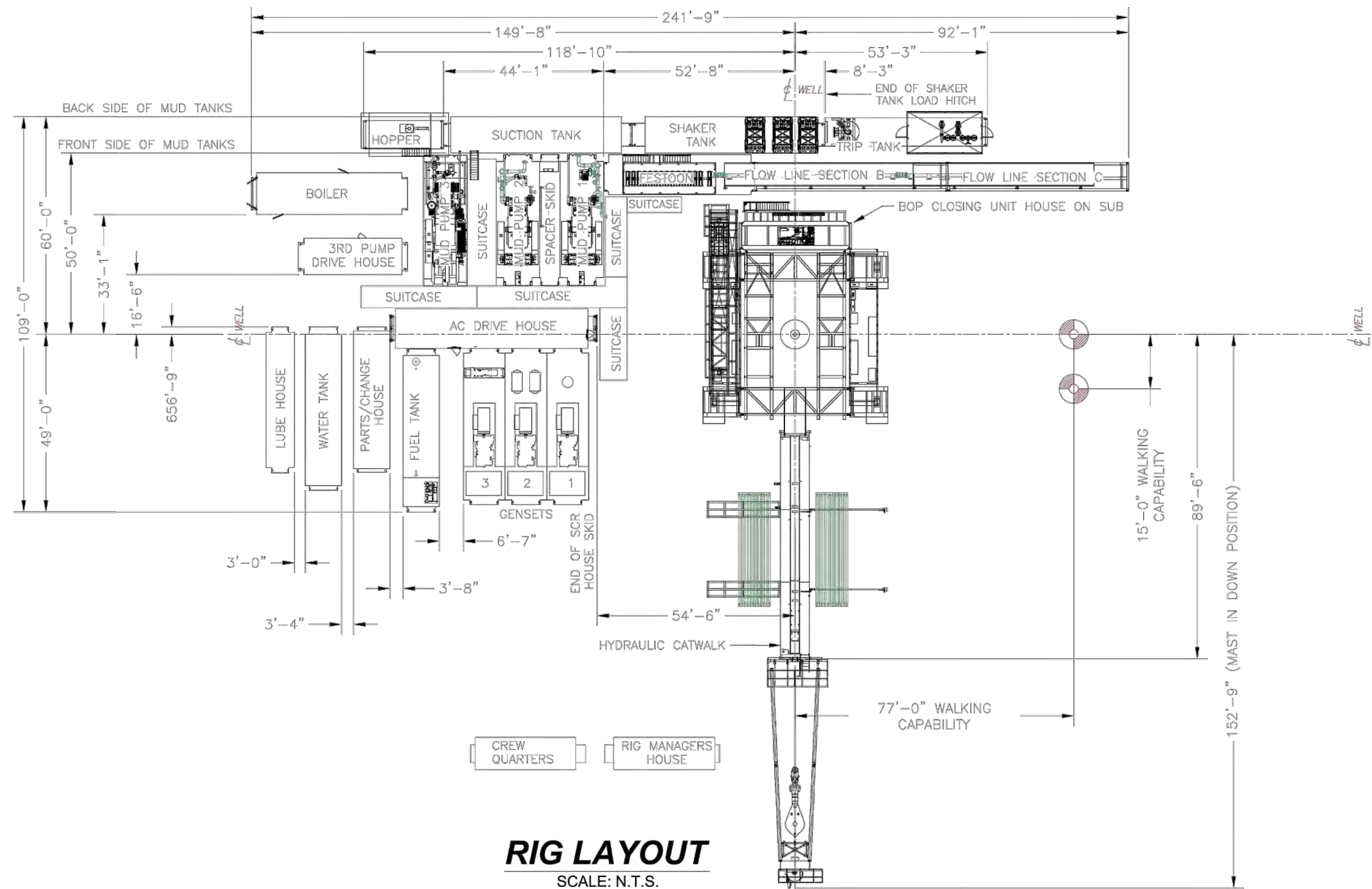
NOTES:

- Rounded corners shown at 35' radius.
- Contours shown at 2' intervals.
- Cut/Fill slopes 3:1 (Typ.).
- Overall Working Pad Surface = 640' x 700'

RAGGED 6-64 4 PAD
LOT 1, SECTION 4, T6S, R64W, 6th P.M.
ELBERT COUNTY, COLORADO

SURVEYED BY	ORION RICE, J.W.	05-10-22	SCALE
DRAWN BY	K.C.	06-06-22	1" = 60'

PRELIMINARY DRILL RIG LAYOUT



GMT EXPLORATION COMPANY, LLC

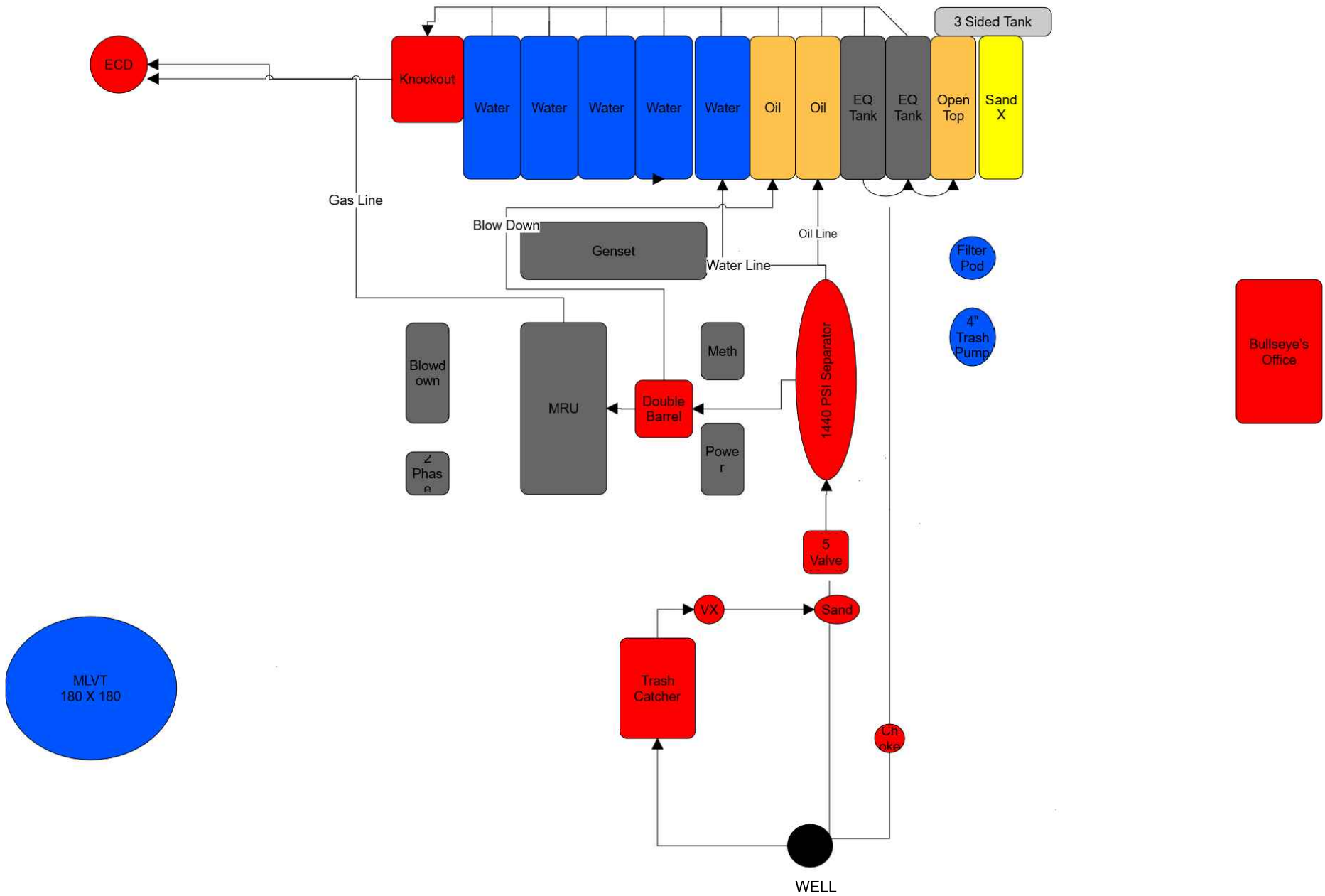
RAGGED 6-64 4 PAD
LOT 1, SECTION 4, T6S, R64W, 6th P.M.
ELBERT COUNTY, COLORADO

SURVEYED BY	ORION RICE, J.W.	05-10-22	SCALE
DRAWN BY	K.C.	06-06-22	N.T.S.

RIG LAYOUT DETAIL



UELS, LLC
Corporate Office * 85 South 200 East
Vernal, UT 84078 * (435) 789-1017



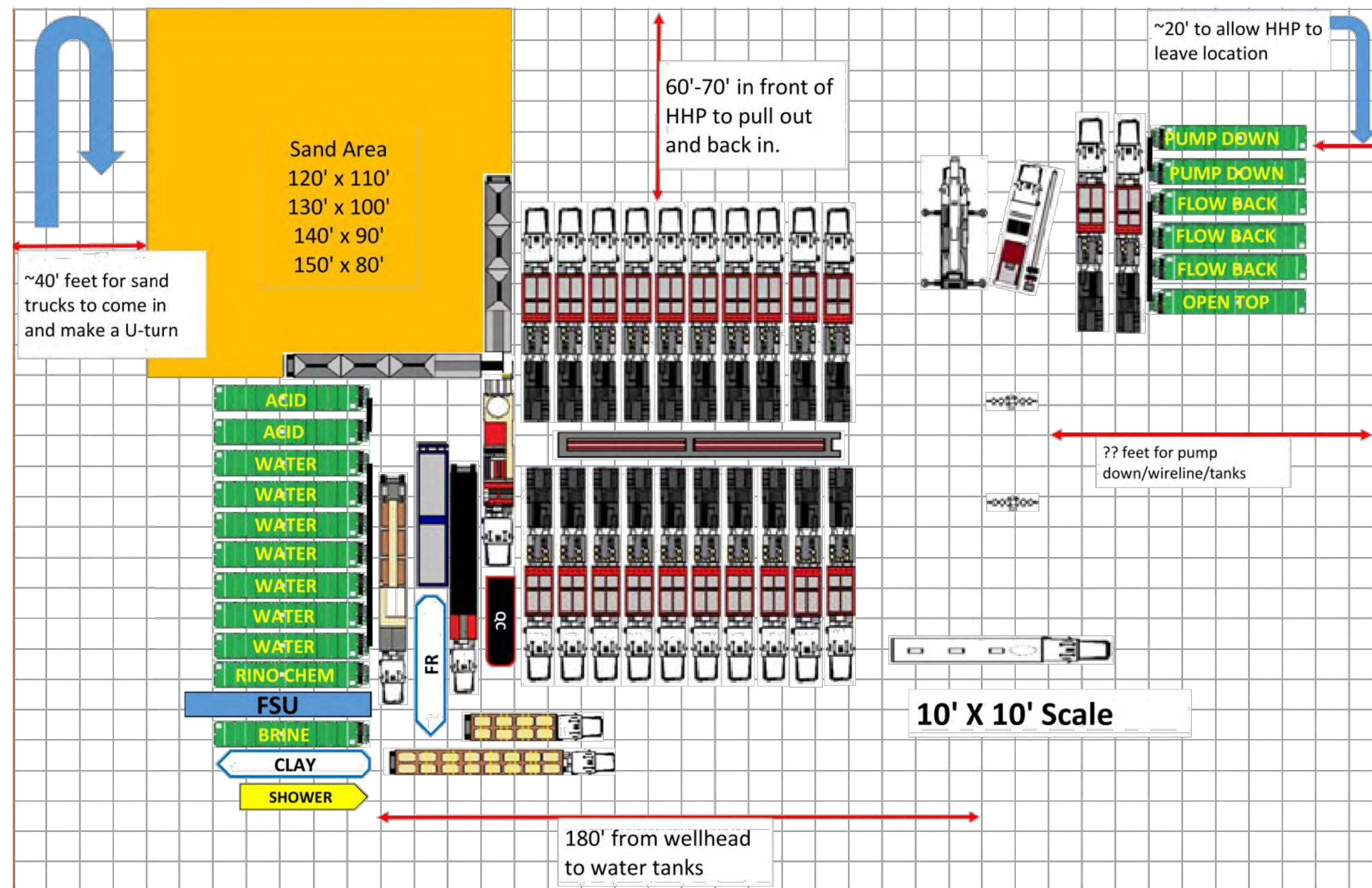
GMT EXPLORATION COMPANY, LLC

RAGGED 6-64 4 PAD
LOT 1, SECTION 4, T6S, R64W, 6th P.M.
ELBERT COUNTY, COLORADO

SURVEYED BY	ORION RICE, J.W.	05-10-22	SCALE
DRAWN BY	K.C.	06-06-22	N.T.S
FLOWBACK EQUIPMENT LAYOUT DETAIL			



UELS, LLC
Corporate Office * 85 South 200 East
Vernal, UT 84078 * (435) 789-1017



FRAC LAYOUT
SCALE: N.T.S.

GMT EXPLORATION COMPANY, LLC

RAGGED 6-64 4 PAD
LOT 1, SECTION 4, T6S, R64W, 6th P.M.
ELBERT COUNTY, COLORADO

SURVEYED BY	ORION RICE, J.W.	05-10-22	SCALE
DRAWN BY	K.C.	06-06-22	N.T.S.

WELL COMPLETION & STIMULATION LAYOUT DETAIL

