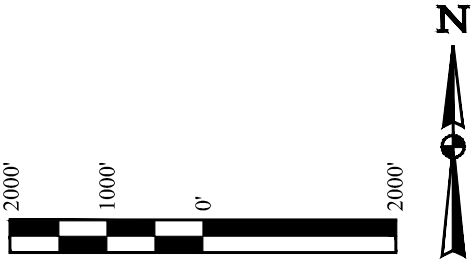


- LEGEND:**
- OGDP BOUNDARY
 - 2000' OFFSET FROM OGDP BOUNDARY
 - EXISTING FLOWLINE
 - PROPOSED ACCESS ROAD
 - WORKING PAD SURFACE
 - OIL/GAS LOCATION



GMT EXPLORATION COMPANY, LLC

**RAGGED 6-64 4 PAD
LOT 1, SECTION 4, T6S, R64W, 6th P.M.
ELBERT COUNTY, COLORADO**

SURVEYED BY	ORION RICE, J.W.	05-10-22	SCALE
DRAWN BY	K.C.	06-06-22	1" = 2000'

RELATED LOCATION & FLOWLINE MAP



UELS, LLC
Corporate Office * 85 South 200 East
Vernal, UT 84078 * (435) 789-1017