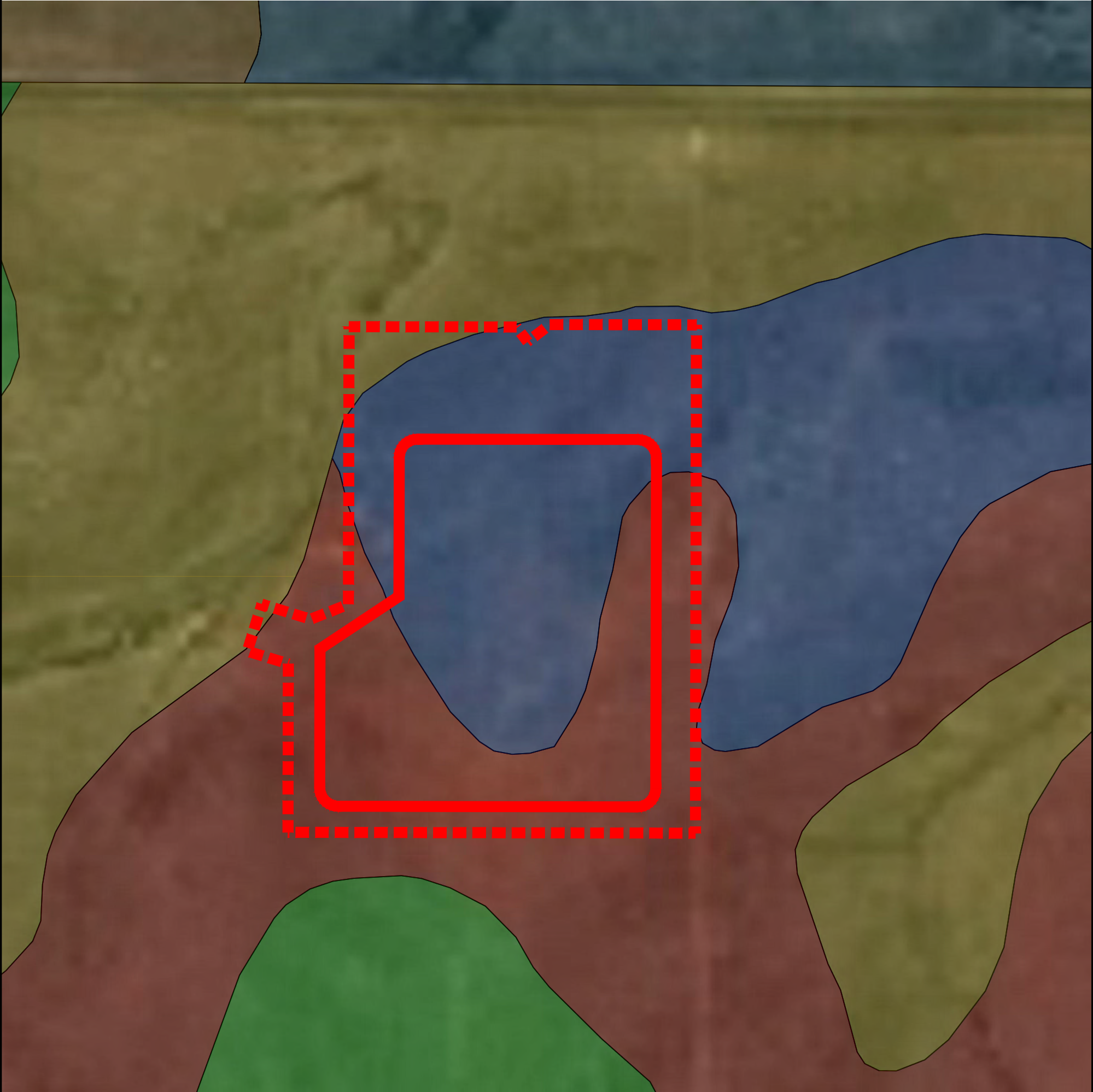
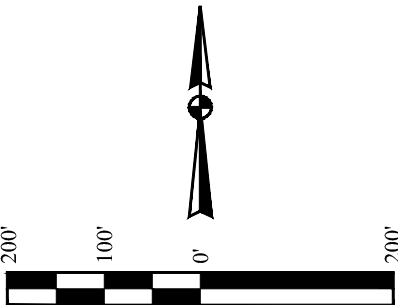


LEGEND

- = OIL & GAS LOCATION
- = WORKING PAD SURFACE
- = RENOHILL CLAY LOAM 4 TO 8 PERCENT SLOPES (6.907 ACRES)
- = BRESSER SANDY LOAM 4 TO 8 PERCENT SLOPES (8.566 ACRES)
- = NUNN CLAY LOAM 0 TO 4 PERCENT SLOPES (0.425 ACRES)
- = BRESSER-STALETON SANDY LOAMS 8 TO 25 PERCENT SLOPES (0.000 ACRES)
- = NUNN CLAY LOAM 0 TO 3 PERCENT SLOPES (0.000 ACRES)
- = BRESSER-STALETON SANDY LOAMS 9 TO 20 PERCENT SLOPES (0.000 ACRES)



GMT EXPLORATION COMPANY, LLC

RAGGED 6-64 4 PAD
LOT 1, SECTION 4, T6S, R64W, 6th P.M.
ELBERT COUNTY, COLORADO

SURVEYED BY	ORION RICE, J.W.	05-10-22	SCALE
DRAWN BY	K.C.	06-06-22	1" = 200'

SOILS SITE DIAGRAM



UELS, LLC
Corporate Office * 85 South 200 East
Vernal, UT 84078 * (435) 789-1017

Elbert County, Colorado, Western Part

38—Renohill clay loam, 4 to 8 percent slopes

Map Unit Setting

National map unit symbol: jnk_v

Elevation: 5,300 to 6,400 feet

Mean annual precipitation: 14 to 17 inches

Farmland classification: Not prime farmland

Map Unit Composition

Renohill and similar soils: 80 percent

Minor components: 20 percent

Estimates are based on observations, descriptions, and transects of the mapunit.

Description of Renohill

Setting

Landform: Ridges, hills

Landform position (three-dimensional): Side slope, crest

Down-slope shape: Linear

Across-slope shape: Linear

Parent material: Residuum weathered from sandstone and shale

Typical profile

H1 - 0 to 2 inches: clay loam

H2 - 2 to 14 inches: clay

H3 - 14 to 24 inches: clay loam

H4 - 24 to 28 inches: unweathered bedrock

Properties and qualities

Slope: 4 to 8 percent

Depth to restrictive feature: 20 to 40 inches to paralithic bedrock

Drainage class: Well drained

Runoff class: High

Capacity of the most limiting layer to transmit water

(Ksat): Moderately low to moderately high (0.06 to 0.20 in/hr)

Depth to water table: More than 80 inches

Frequency of flooding: None

Frequency of ponding: None

Calcium carbonate, maximum content: 15 percent

Maximum salinity: Nonsaline to slightly saline (0.0 to 4.0 mmhos/cm)

Available water supply, 0 to 60 inches: Low (about 4.2 inches)

Interpretive groups

Land capability classification (irrigated): 4e

Land capability classification (nonirrigated): 4e

Hydrologic Soil Group: C

Ecological site: R049XB208CO - Clayey Foothill

Hydric soil rating: No

Minor Components

Kutch

Percent of map unit: 6 percent

Hydric soil rating: No

Cushman

Percent of map unit: 6 percent

Hydric soil rating: No

Wiley

Percent of map unit: 5 percent

Hydric soil rating: No

Baca

Percent of map unit: 3 percent

Hydric soil rating: No

Data Source Information

Soil Survey Area: Elbert County, Colorado, Western Part

Survey Area Data: Version 17, Aug 31, 2021

Report — Rangeland Productivity and Plant Composition						
Elbert County, Colorado, Western Part						
Map unit symbol and soil name	Ecological site	Total dry-weight production			Characteristic vegetation	Rangeland composition
		Favorable year	Normal year	Unfavorable year		
		<i>Lb/ac</i>	<i>Lb/ac</i>	<i>Lb/ac</i>		<i>Pct</i>
38—Renohill clay loam, 4 to 8 percent slopes						
Renohill	R049XB208CO: Clayey Foothill	1,400	1,100	800	Western wheatgrass	40
					Green needlegrass	15
					Blue grama	15
					Fourwing saltbush	10
					Prairie junegrass	5
					Sedge	5

Elbert County, Colorado, Western Part

6—Bresser sandy loam, cool, 5 to 9 percent slopes

Map Unit Setting

National map unit symbol: 2tlpk

Elevation: 5,500 to 6,960 feet

Mean annual precipitation: 15 to 19 inches

Mean annual air temperature: 48 to 52 degrees F

Frost-free period: 100 to 130 days

Farmland classification: Not prime farmland

Map Unit Composition

Bresser, cool, and similar soils: 85 percent

Minor components: 15 percent

Estimates are based on observations, descriptions, and transects of the mapunit.

Description of Bresser, Cool

Setting

Landform: Interfluves

Landform position (two-dimensional): Shoulder, backslope

Landform position (three-dimensional): Interfluve

Down-slope shape: Linear

Across-slope shape: Linear

Parent material: Tertiary aged alluvium derived from arkose

Typical profile

Ap - 0 to 5 inches: sandy loam

Bt1 - 5 to 8 inches: sandy loam

Bt2 - 8 to 27 inches: sandy clay loam

Bt3 - 27 to 36 inches: sandy loam

C - 36 to 80 inches: loamy coarse sand

Properties and qualities

Slope: 5 to 9 percent

Depth to restrictive feature: More than 80 inches

Drainage class: Well drained

Runoff class: Medium

Capacity of the most limiting layer to transmit water

(Ksat): Moderately high to high (0.60 to 6.00 in/hr)

Depth to water table: More than 80 inches

Frequency of flooding: None

Frequency of ponding: None

Calcium carbonate, maximum content: 5 percent

Maximum salinity: Nonsaline to very slightly saline (0.1 to 2.0 mmhos/cm)

Available water supply, 0 to 60 inches: Low (about 5.4 inches)

Interpretive groups

Land capability classification (irrigated): 4e

Land capability classification (nonirrigated): 4e
Hydrologic Soil Group: B
Ecological site: R049XB210CO - Sandy Foothill
Hydric soil rating: No

Minor Components

Ascalon

Percent of map unit: 10 percent
Landform: Interfluves
Landform position (two-dimensional): Shoulder
Landform position (three-dimensional): Interfluve
Down-slope shape: Linear
Across-slope shape: Linear
Ecological site: R049XB210CO - Sandy Foothill
Hydric soil rating: No

Truckton

Percent of map unit: 5 percent
Landform: Interfluves
Landform position (two-dimensional): Backslope
Landform position (three-dimensional): Interfluve
Down-slope shape: Linear
Across-slope shape: Linear
Ecological site: R049XB210CO - Sandy Foothill
Hydric soil rating: No

Data Source Information

Soil Survey Area: Elbert County, Colorado, Western Part
Survey Area Data: Version 17, Aug 31, 2021

Report — Rangeland Productivity and Plant Composition						
Elbert County, Colorado, Western Part						
Map unit symbol and soil name	Ecological site	Total dry-weight production			Characteristic vegetation	Rangeland composition
		Favorable year	Normal year	Unfavorable year		
		<i>Lb/ac</i>	<i>Lb/ac</i>	<i>Lb/ac</i>		<i>Pct</i>
6—Bresser sandy loam, cool, 5 to 9 percent slopes						
Bresser, cool	R049XB210CO: Sandy Foothill	2,300	1,600	900	Prairie sandreed	20
					Little bluestem	10
					Side-oats grama	10
					Prairie junegrass	10
					Needle and thread	10
					Fringed sagewort	5
					Sand bluestem	5
					Western wheatgrass	5
					Fendler threeawn	3
					Blue grama	—

Elbert County, Colorado, Western Part

32—Nunn clay loam, 0 to 4 percent slopes

Map Unit Setting

National map unit symbol: 2tlpq

Elevation: 5,450 to 6,430 feet

Mean annual precipitation: 15 to 19 inches

Mean annual air temperature: 48 to 52 degrees F

Frost-free period: 100 to 130 days

Farmland classification: Prime farmland if irrigated

Map Unit Composition

Nunn and similar soils: 85 percent

Minor components: 15 percent

Estimates are based on observations, descriptions, and transects of the mapunit.

Description of Nunn

Setting

Landform: Terraces, pediments

Landform position (three-dimensional): Tread

Down-slope shape: Linear

Across-slope shape: Linear

Parent material: Alluvium

Typical profile

A - 0 to 6 inches: clay loam

Bt - 6 to 18 inches: clay

Btk - 18 to 30 inches: clay

Bk - 30 to 47 inches: clay loam

BCK - 47 to 80 inches: clay loam

Properties and qualities

Slope: 0 to 4 percent

Depth to restrictive feature: More than 80 inches

Drainage class: Well drained

Runoff class: Medium

Capacity of the most limiting layer to transmit water

(Ksat): Moderately low to moderately high (0.06 to 0.20 in/hr)

Depth to water table: More than 80 inches

Frequency of flooding: None

Frequency of ponding: None

Calcium carbonate, maximum content: 7 percent

Maximum salinity: Nonsaline to very slightly saline (0.1 to 2.0 mmhos/cm)

Sodium adsorption ratio, maximum: 0.5

Available water supply, 0 to 60 inches: High (about 9.6 inches)

Interpretive groups

Land capability classification (irrigated): 3e

Land capability classification (nonirrigated): 3e
Hydrologic Soil Group: C
Ecological site: R049XB208CO - Clayey Foothill
Hydric soil rating: No

Minor Components

Heldt

Percent of map unit: 10 percent
Landform: Terraces, pediments
Landform position (three-dimensional): Tread
Down-slope shape: Linear
Across-slope shape: Linear
Ecological site: R049XB208CO - Clayey Foothill
Hydric soil rating: No

Englewood

Percent of map unit: 5 percent
Landform: Terraces, pediments
Landform position (three-dimensional): Tread
Down-slope shape: Linear
Across-slope shape: Linear
Ecological site: R049XB208CO - Clayey Foothill
Hydric soil rating: No

Data Source Information

Soil Survey Area: Elbert County, Colorado, Western Part
Survey Area Data: Version 17, Aug 31, 2021

Report — Rangeland Productivity and Plant Composition						
Elbert County, Colorado, Western Part						
Map unit symbol and soil name	Ecological site	Total dry-weight production			Characteristic vegetation	Rangeland composition
		Favorable year	Normal year	Unfavorable year		
		<i>Lb/ac</i>	<i>Lb/ac</i>	<i>Lb/ac</i>		<i>Pct</i>
32—Nunn clay loam, 0 to 4 percent slopes						
Nunn	R049XB208CO: Clayey Foothill	2,000	1,600	700	Western wheatgrass	40
					Blue grama	25
					Green needlegrass	10
					Buffalograss	5
					Fourwing saltbush	5
					Miscellaneous perennial grasses	3
					Miscellaneous shrubs	3
					Miscellaneous perennial forbs	3