



LEGEND

- = OIL & GAS LOCATION
- = WORKING PAD SURFACE
- = BLOCK GROUP % MINOR POP > COUNTY % MINOR POP

2000' Offset  
from Working  
Pad Surface



GMT EXPLORATION COMPANY, LLC

RAGGED 6-64 4 PAD  
LOT 1, SECTION 4, T6S, R64W, 6th P.M.  
ELBERT COUNTY, COLORADO

SURVEYED BY	ORION RICE, J.W.	05-10-22	SCALE
DRAWN BY	K.C.	06-06-22	1" = 500'
DISPROPORTIONATELY IMPACTED COMMUNITIES MAP			



UELS, LLC  
Corporate Office \* 85 South 200 East  
Vernal, UT 84078 \* (435) 789-1017





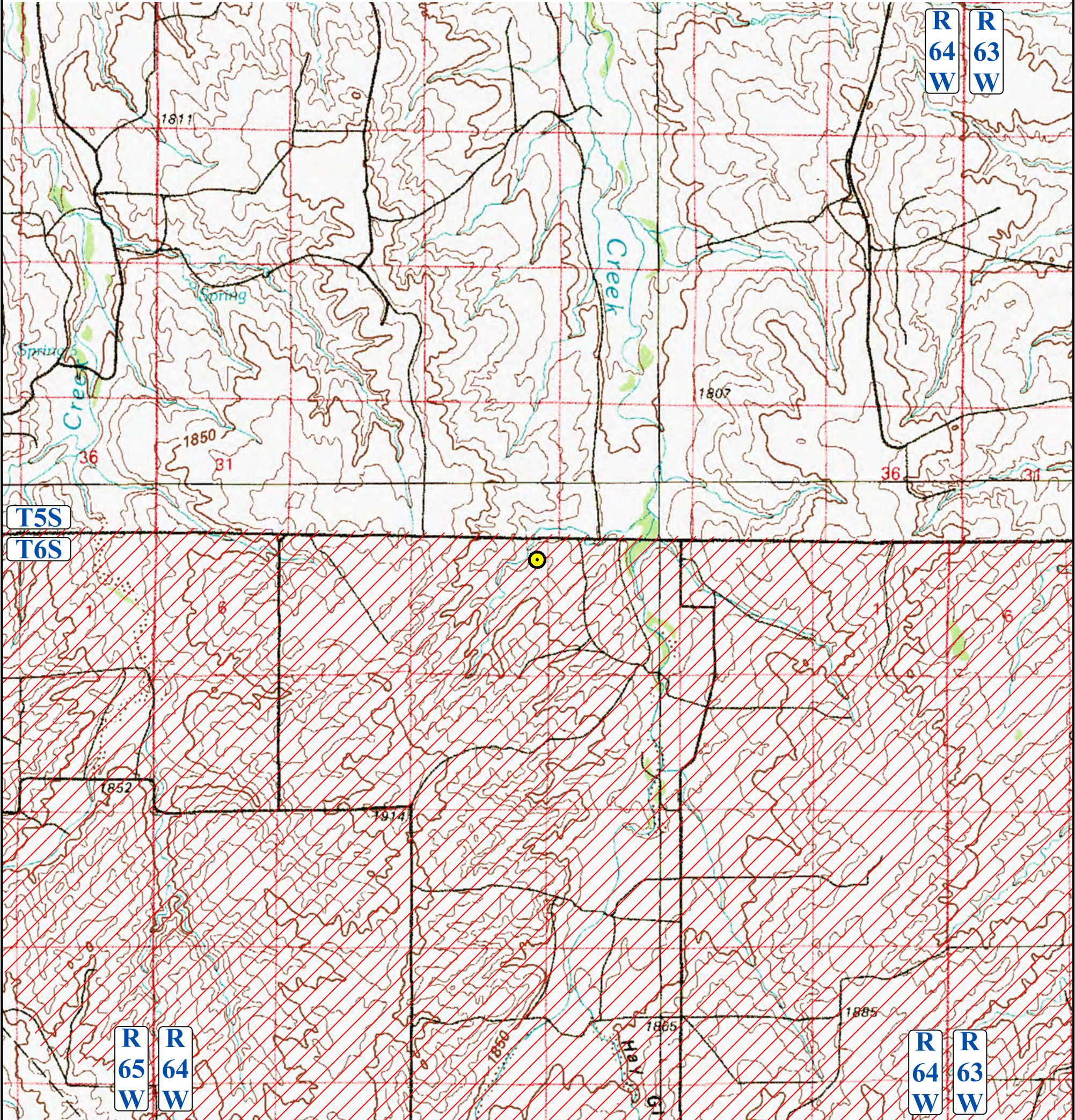
LEGEND



= PROPOSED OIL & GAS LOCATION



= BLOCK GROUP % MINOR POP > COUNTY % MINOR POP



GMT EXPLORATION COMPANY, LLC

RAGGED 6-64 4 PAD  
LOT 1, SECTION 4, T6S, R64W, 6th P.M.  
ELBERT COUNTY, COLORADO

SURVEYED BY	ORION RICE, J.W.	05-10-22	SCALE
DRAWN BY	K.C.	06-06-22	1" = 4,000'

DISPROPORTIONATELY IMPACTED COMMUNITIES MAP



UELS, LLC  
Corporate Office \* 85 South 200 East  
Vernal, UT 84078 \* (435) 789-1017