

# LEGEND:

- = AS-DRILLED WELLHEAD.
- ◆ = TOP OF GAS INTERVAL.
- = BOTTOM HOLE.
- ▲ = SECTION CORNERS LOCATED. (NAD 83)

T4S, R96W, 6th P.M.

1953 Brass Cap,  
1.0' High, Mound  
of Stones  
Lat: 39.680552°  
Long: 108.135924°

1953 Brass Cap,  
0.5' High, Mound  
of Stones, Steel Post  
Lat: 39.680548°  
Long: 108.126499°

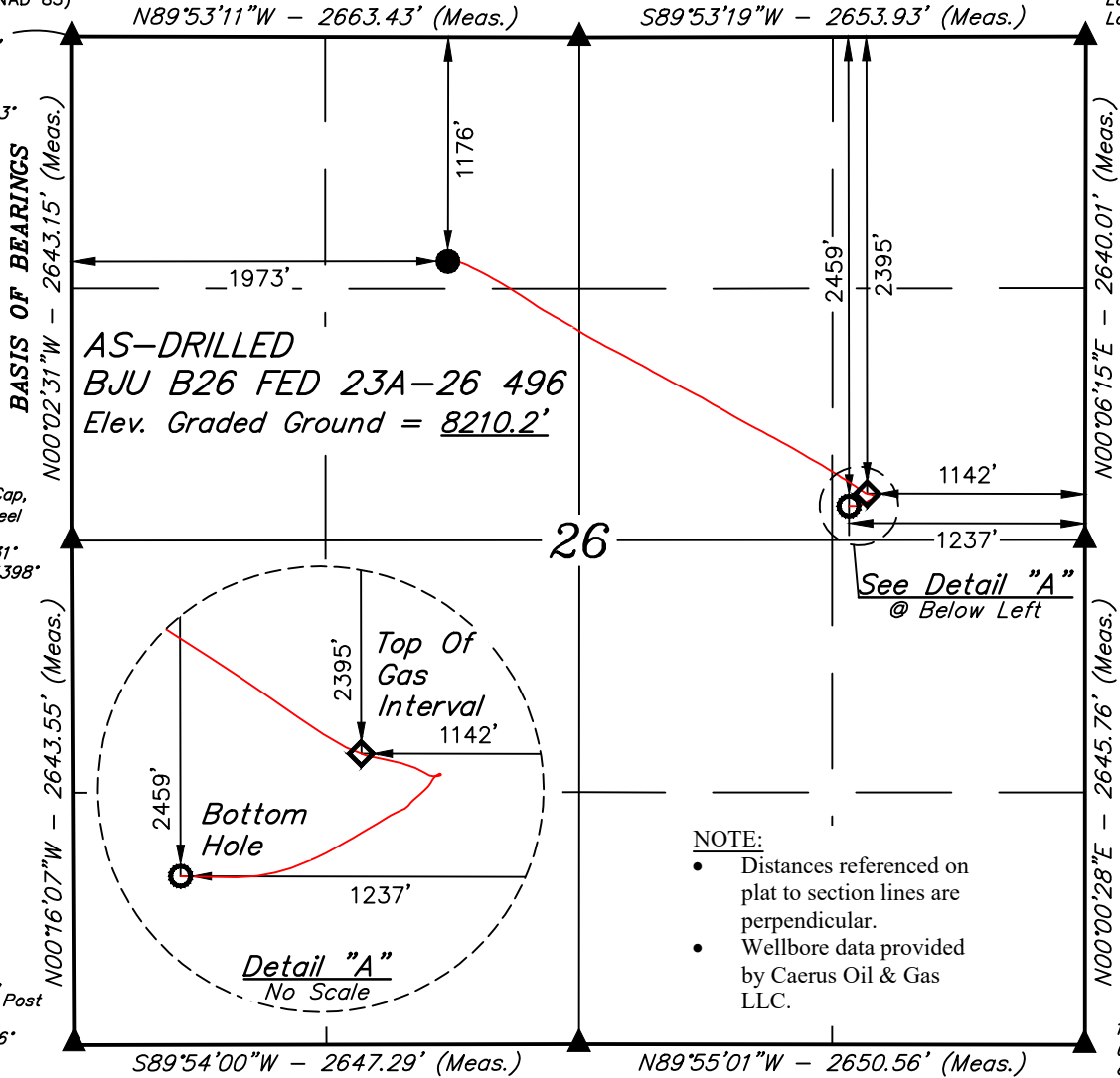
1953 Brass Cap,  
0.8' High, Steel  
Post  
Lat: 39.680584°  
Long: 108.145383°

1953 Brass Cap,  
0.7' High, Steel  
Post  
Lat: 39.673331°  
Long: 108.145398°

1953 Brass Cap,  
1.4' High, Steel Post  
Lat: 39.666077°  
Long: 108.145376°

1953 Brass Cap,  
0.8' High, Mound  
of Stones  
Lat: 39.666072°  
Long: 108.135977°

1953 Brass Cap,  
0.8' High, Mound  
of Stones  
Lat: 39.666043°  
Long: 108.126565°



## NOTE:

- Distances referenced on plat to section lines are perpendicular.
- Wellbore data provided by Caerus Oil & Gas LLC.

PDOP = 1.5

<b>NAD 83 (AS-DRILLED WELLHEAD)</b>	
LATITUDE = 39°40'38.40" (39.677334°)	
LONGITUDE = 108°08'18.18" (108.138384°)	
<b>NAD 27 (AS-DRILLED WELLHEAD)</b>	
LATITUDE = 39°40'38.49" (39.677359°)	
LONGITUDE = 108°08'15.90" (108.137749°)	
<b>UTM NAD 27 (ZONE 12)</b>	
N: 14421413.29' E: 2445836.23'	
<b>NAD 83 (TOP OF GAS INTERVAL)</b>	
LATITUDE = 39°40'26.32" (39.673979°)	
LONGITUDE = 108°07'50.13" (108.130592°)	
<b>NAD 27 (TOP OF GAS INTERVAL)</b>	
LATITUDE = 39°40'26.41" (39.674003°)	
LONGITUDE = 108°07'47.84" (108.129956°)	
<b>UTM NAD 27 (ZONE 12)</b>	
N: 14420261.28' E: 2448068.46'	
<b>NAD 83 (BOTTOM HOLE)</b>	
LATITUDE = 39°40'25.69" (39.673803°)	
LONGITUDE = 108°07'51.34" (108.130929°)	
<b>NAD 27 (BOTTOM HOLE)</b>	
LATITUDE = 39°40'25.78" (39.673827°)	
LONGITUDE = 108°07'49.06" (108.130293°)	
<b>UTM NAD 27 (ZONE 12)</b>	
N: 14420194.18' E: 2447975.66'	



## CERTIFICATE

THIS IS TO CERTIFY THAT THE ABOVE PLAT WAS PREPARED AND LOCATION AS SHOWN WAS STAKED ON THE GROUND FROM FIELD NOTES OF ACTUAL SURVEYS MADE BY ME OR UNDER MY SUPERVISION AND THAT THE SAME ARE TRUE AND CORRECT TO THE BEST OF MY KNOWLEDGE AND BELIEF.

REGISTERED LAND SURVEYOR  
REGISTRATION # 38130  
STATE OF COLORADO

REV: 1 01-12-23 M.D. (UPDATE WELLBORE)

## BASIS OF BEARINGS

BEARINGS ARE BASED ON THE ASSUMPTION THAT THE WEST LINE OF THE NORTHWEST 1/4 OF SECTION 26 BEARS N00°02'31"W. MONUMENTS DESCRIBED HEREON.

## BASIS OF ELEVATION

BENCH MARK (H79) LOCATED IN THE NE 1/4 OF SECTION 35, T4S, R98W, 6th P.M., TAKEN FROM THE BULL FORK QUADRANGLE, COLORADO, 7.5 MINUTE SERIES. (TOPOGRAPHIC MAP) PUBLISHED BY THE UNITED STATES DEPARTMENT OF THE INTERIOR, GEOLOGICAL SURVEY. SAID ELEVATION IS MARKED AS BEING 8535 FEET.



UELLS, LLC  
Corporate Office \* 85 South 200 East  
Vernal, UT 84078 \* (435) 789-1017



Caerus Oil & Gas LLC

AS-DRILLED BJU B26 FED 23A-26 496  
NE 1/4 NW 1/4, SECTION 26, T4S, R96W, 6th P.M.  
GARFIELD COUNTY, COLORADO

SURVEYED BY	DAYTON SLAUGH	11-05-21	SCALE
DRAWN BY	D.R.B.	11-09-21	1" = 1000'

AS-DRILLED WELL LOCATION PLAT