



Compensated Neutron  
Gamma Ray  
Casing Collar Log

Company	Caerus Piceance LLC.	Country	USA
Well	BJU B26 FED 23A-26-496		
Field	Grand Valley		
County	Garfield		
State	Colorado		
Company	Caerus Piceance LLC.	Country	USA
Well	BJU B26 FED 23A-26-496		
Field	Grand Valley		
County	Garfield		
State	Colorado		
Location:	API # : 05-045-24446	Other Services	RCBL
SEC 26 TWP 4S RGE 96W			
Permanent Datum	Ground Level	Elevation	8211'
Log Measured From	Kelly Bushing		
Drilling Measured From	Kelly Bushing		
		Elevation	K.B. 8241' D.F. 8240' G.L. 8211'

Date	27-DEC-2022		
Run Number	One		
Depth Driller	12499 FT		
Depth Logger	12310 FT		
Bottom Logged Interval	12296 FT		
Top Log Interval	8000 FT		
Open Hole Size	8.750"		
Type Fluid	Fresh Water		
Density / Viscosity	8.34 lb/gal		
Max. Recorded Temp.	---		
Estimated Cement Top	---		
Time Well Ready	ROA		
Time Logger on Bottom	13:30		
Equipment Number	8045		
Location	Grand Junction, Co.		
Recorded By	A.Ellsworth		
Witnessed By	Z. Fisher		
Borehole Record			
Run Number	Bit	From	To
	8.75"	Surface	12499'
Tubing Record			
	Size	Weight	From
			To
Casing Record	Size	Wgt/Ft	Top
Surface String	9.625"	36	Surface
Prot. String	4.5"	11.6	Surface
Production String			Bottom
Liner			3015 FT
			12477 FT

<<<< Fold Here >>>>

All interpretations are opinions based on inferences from electrical or other measurements and we cannot and do not guarantee the accuracy or correctness of any interpretation, and we shall not, except in the case of gross or willful negligence on our part, be liable or responsible for any loss, costs, damages, or expenses incurred or sustained by anyone resulting from any interpretation made by any of our officers, agents or employees. These interpretations are also subject to our general terms and conditions set out in our current Price Schedule.

Comments

Log ran as per customer request.  
Depth referenced to Kelly Bushing @ 30FT  
Marker Joint from 8022 FT - 8032 FT  
Log ran from 12310 FT to 8000 FT  
Log ran with 0 PSI surface induced pressure.

Thank you for choosing The Wireline Group!!!



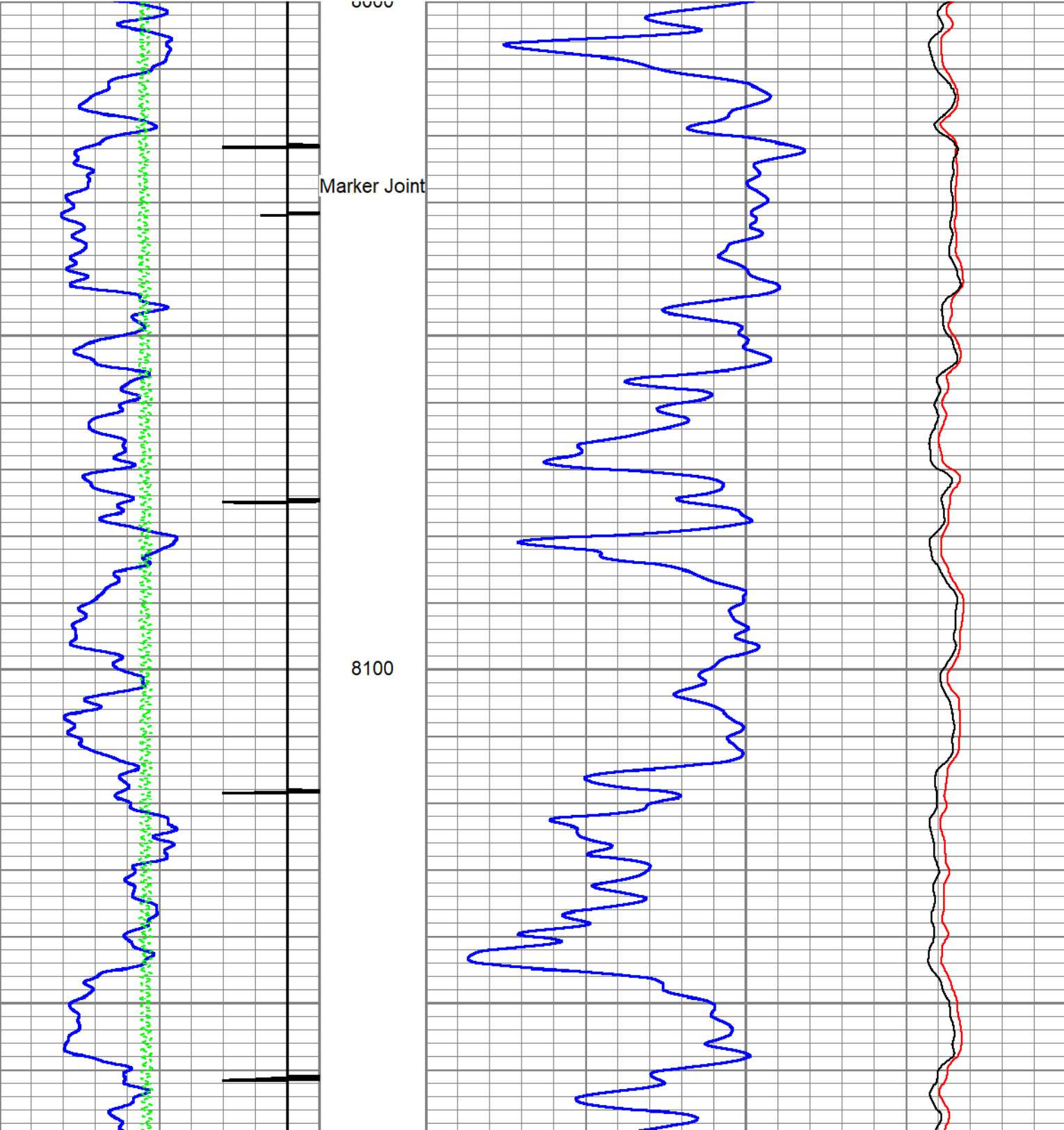
Main Pass 5" = 100'

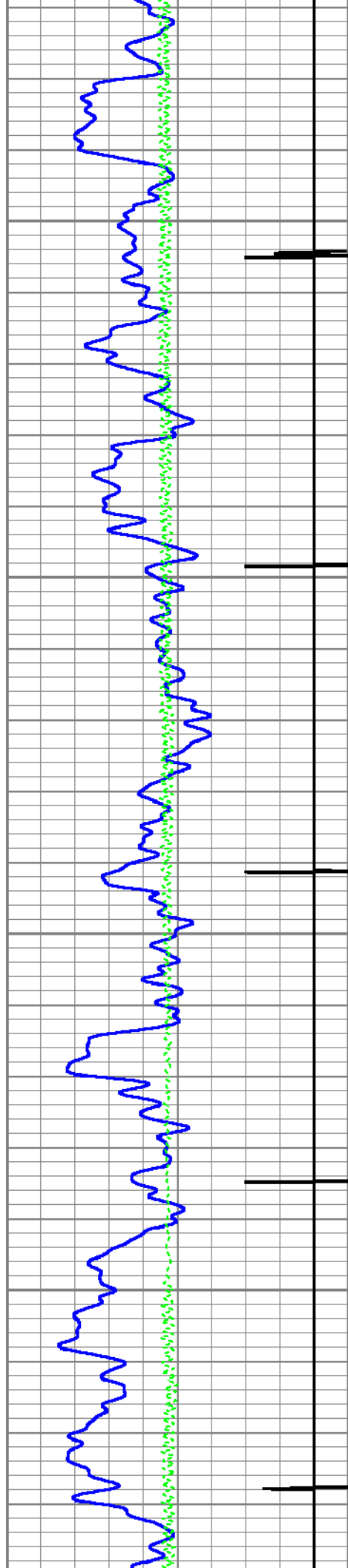
Database File caerus\_bju b26 fed 23a-26-496\_rcbl-cnl\_12-27-2022.db  
Dataset Pathname main  
Presentation Format twg\_cnl  
Dataset Creation Tue Dec 27 11:32:42 2022  
Charted by Depth in Feet scaled 1:240

0	GR (GAPI)	200
9	CCL	-1
0	Line Tension (lb)	4000

0.3 CNPOR (pu) -0.1

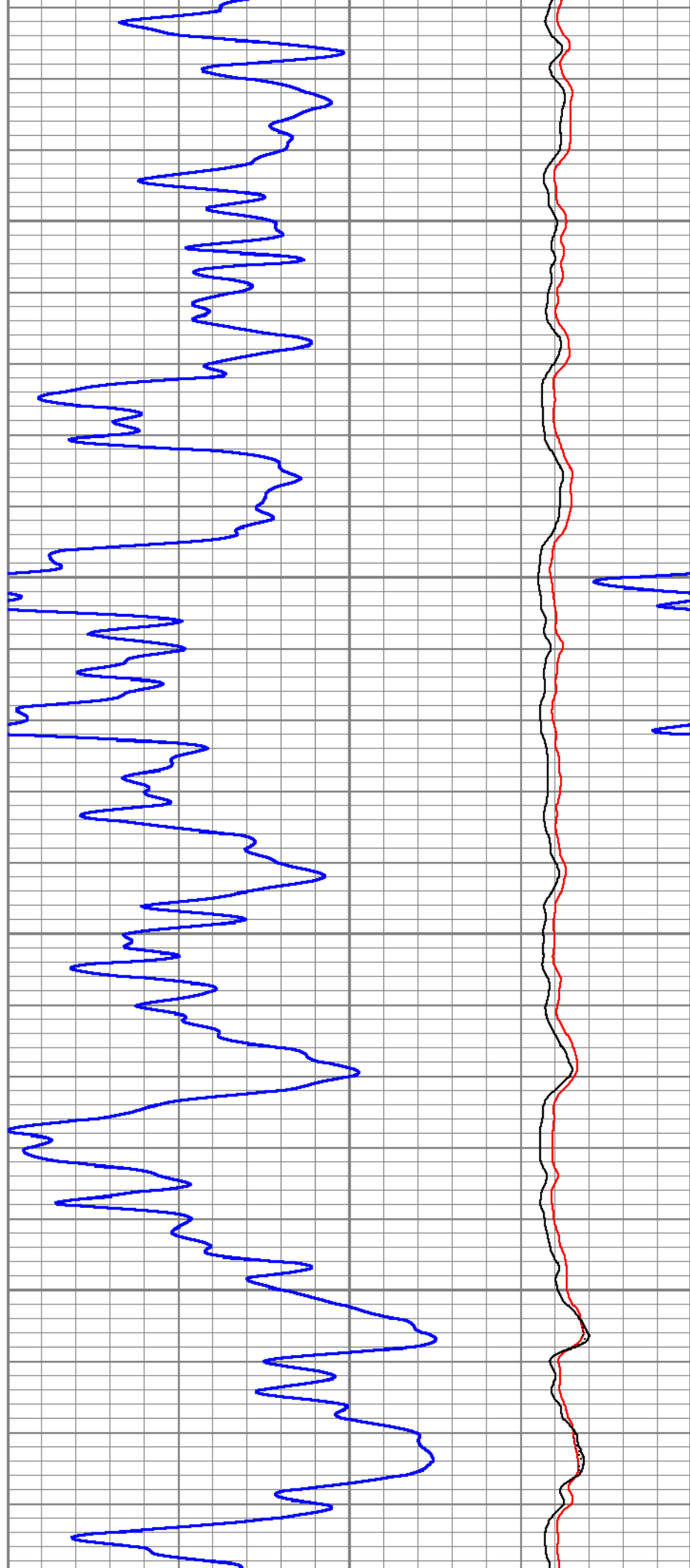
CNLSC
0 (cps) 1500
CNSSC
0 (cps) 7000

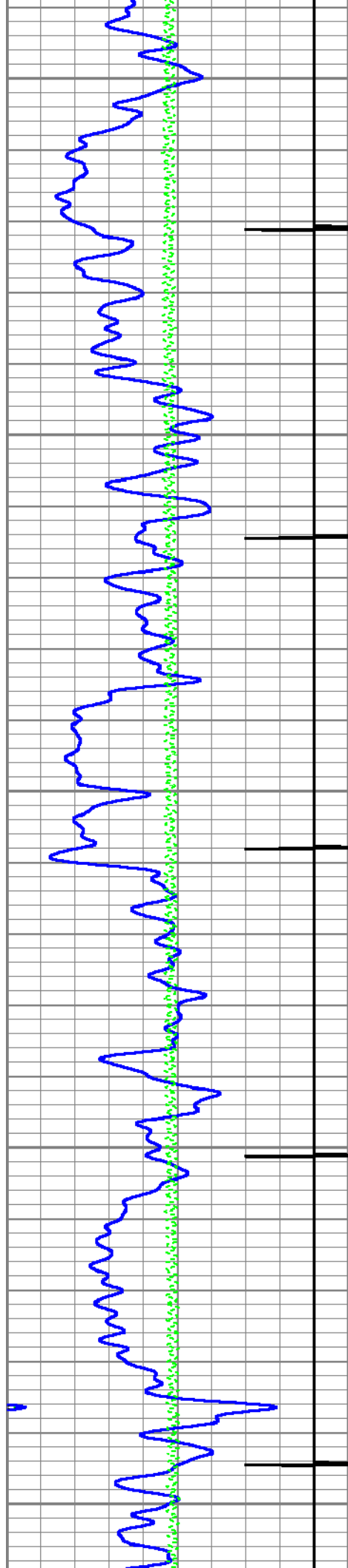




8200

8300

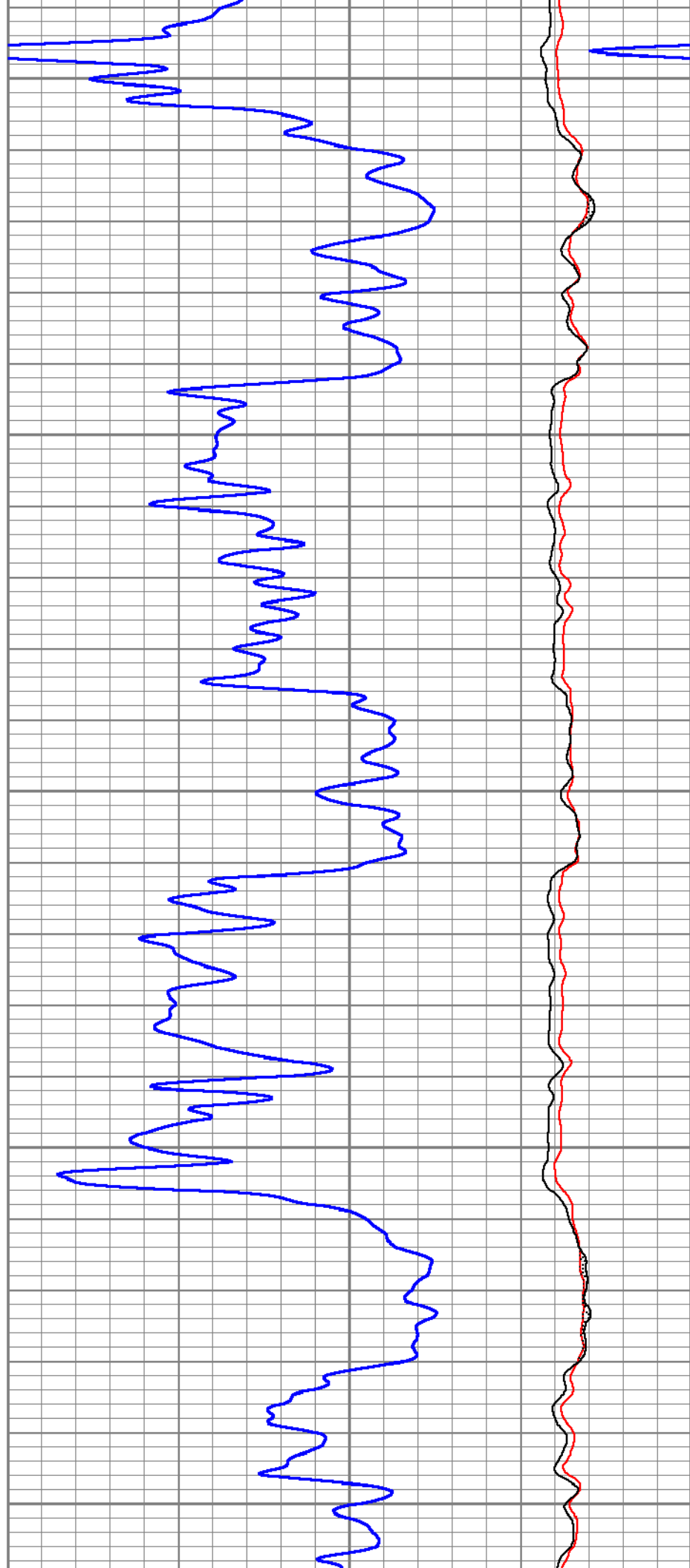


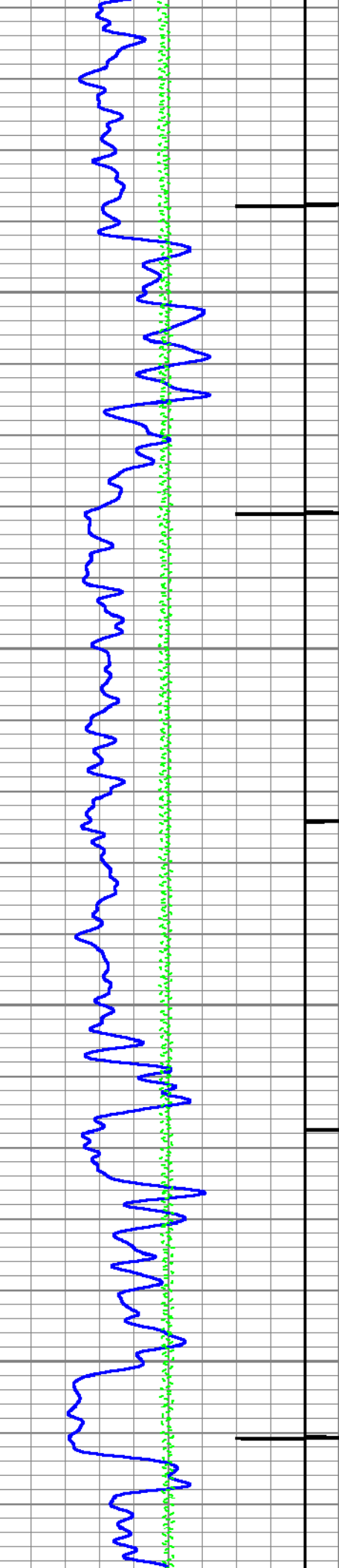


8400

8500

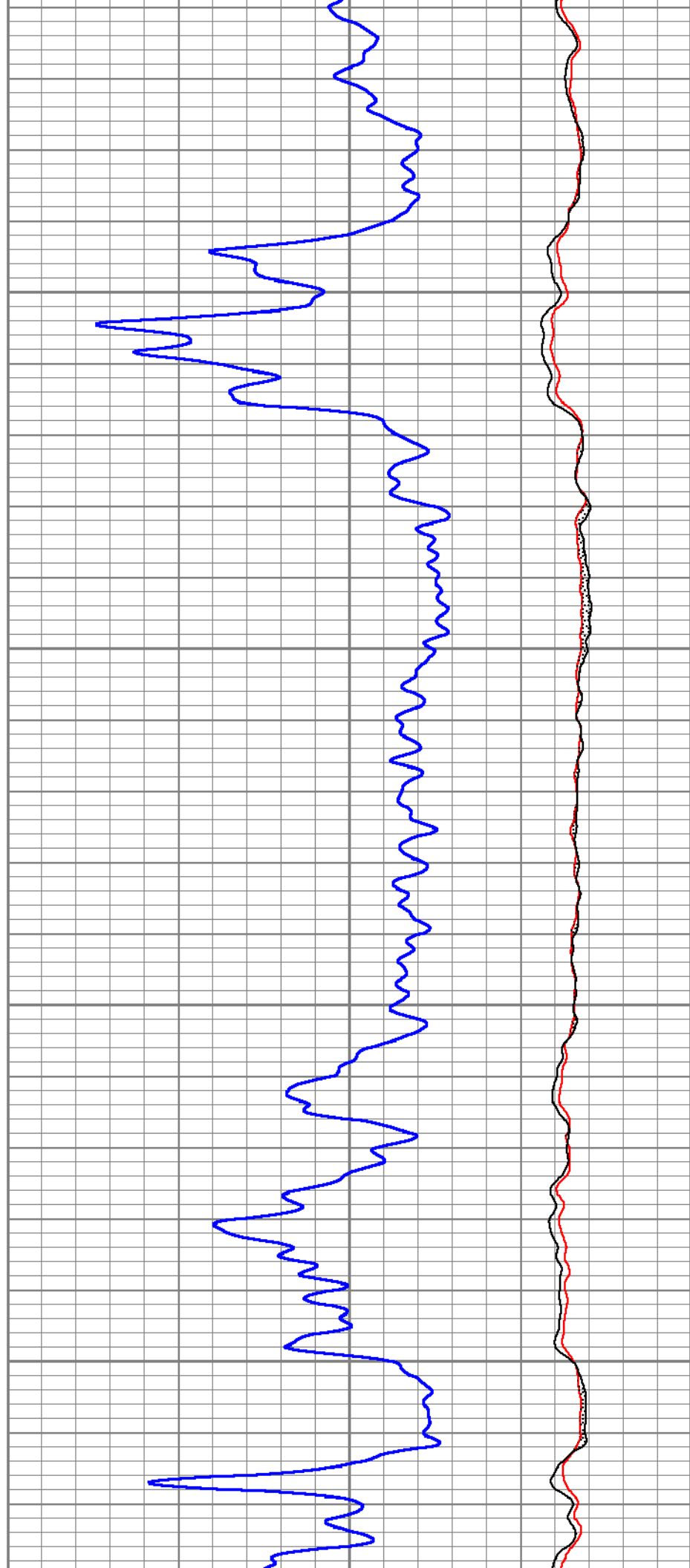
8600

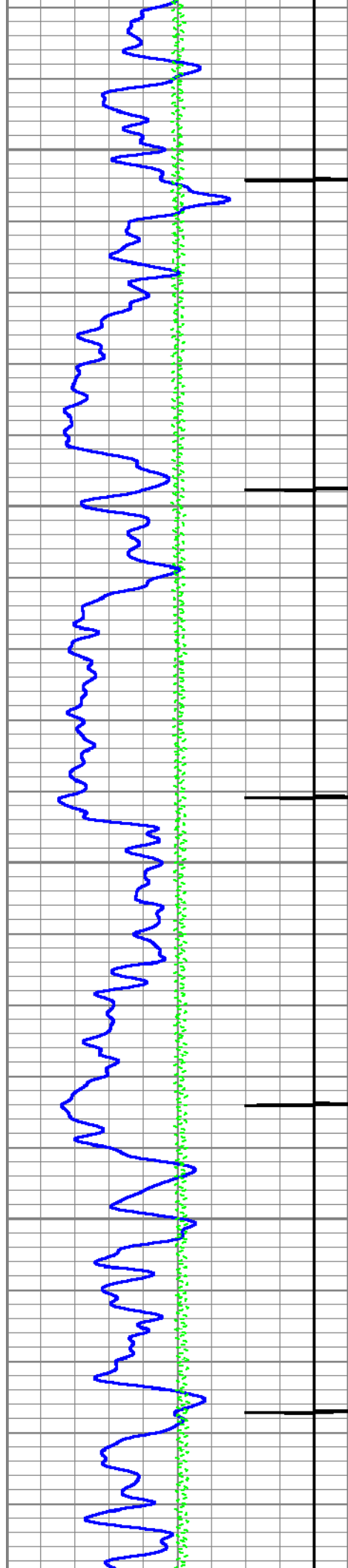




8700

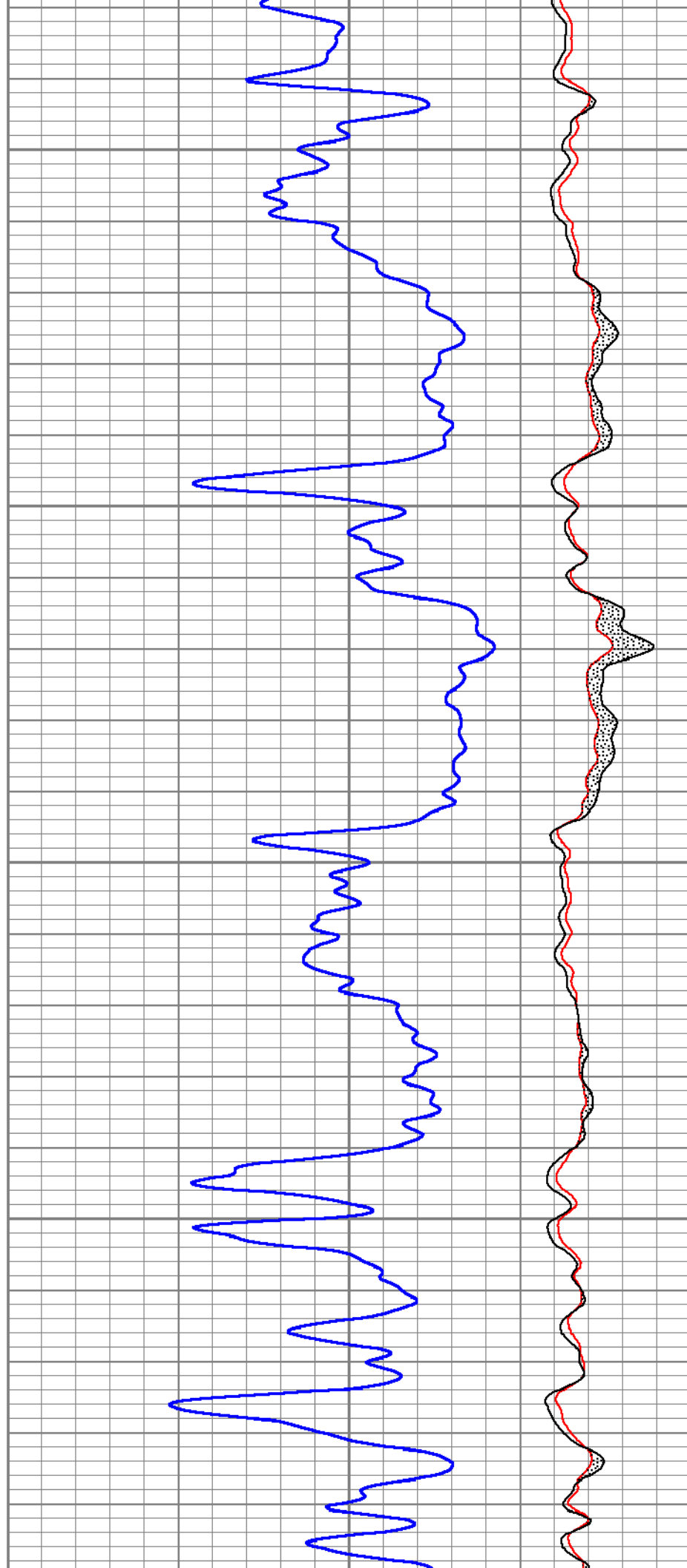
8800

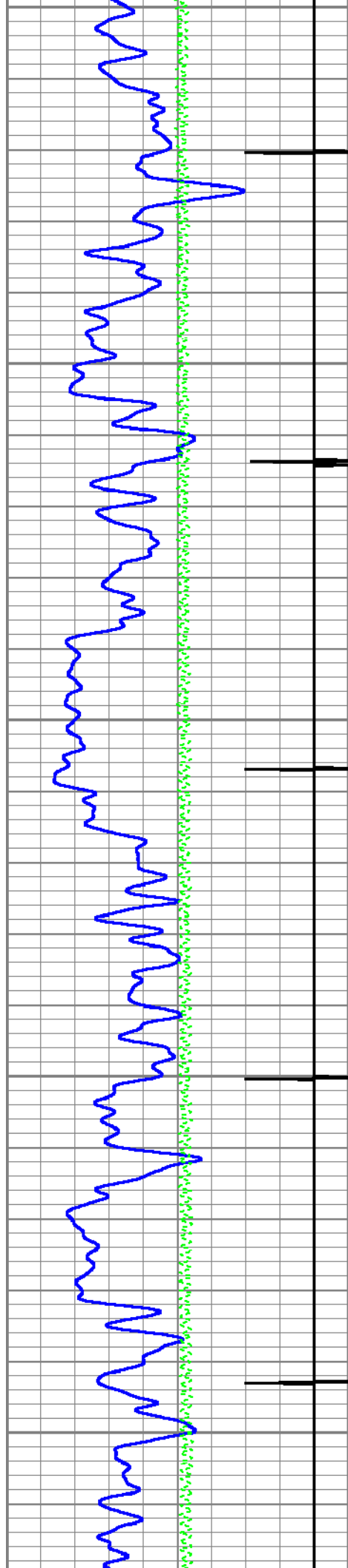




8900

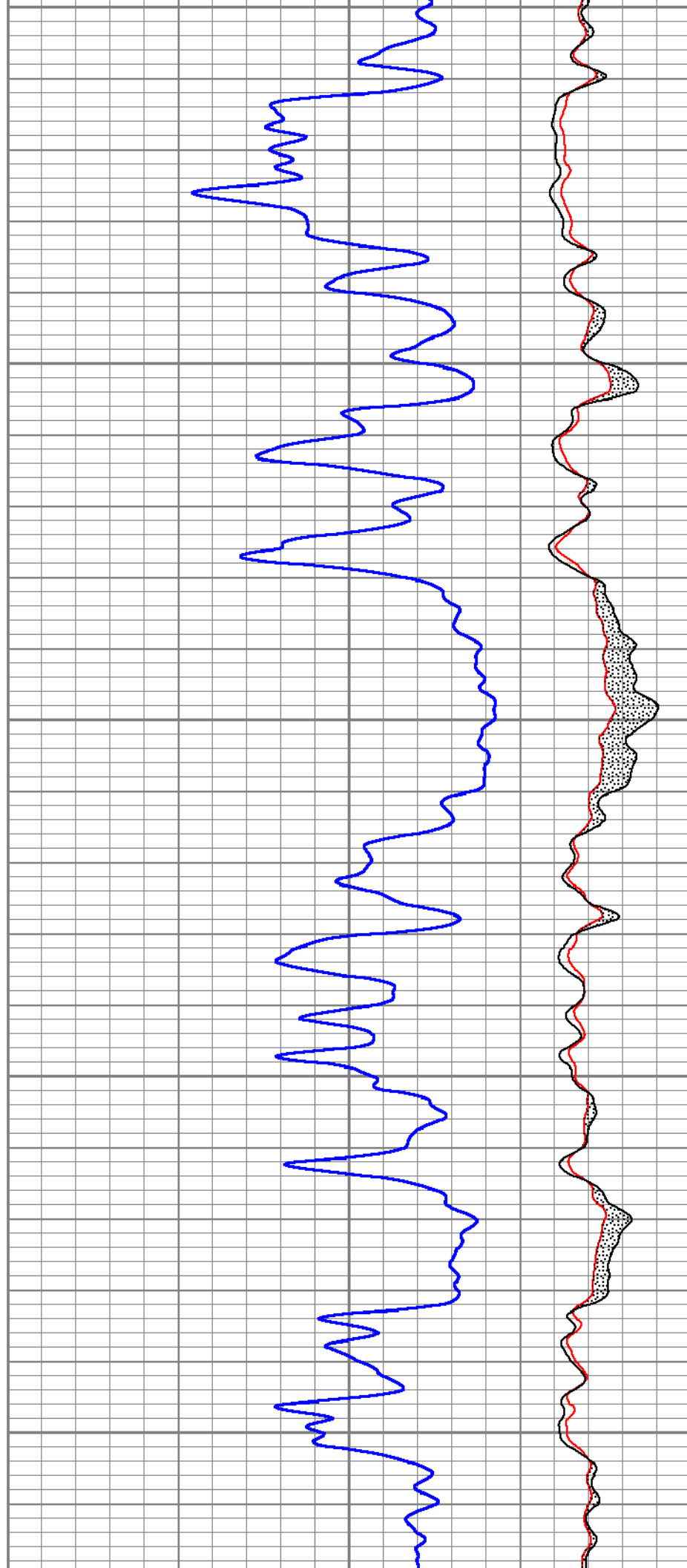
9000

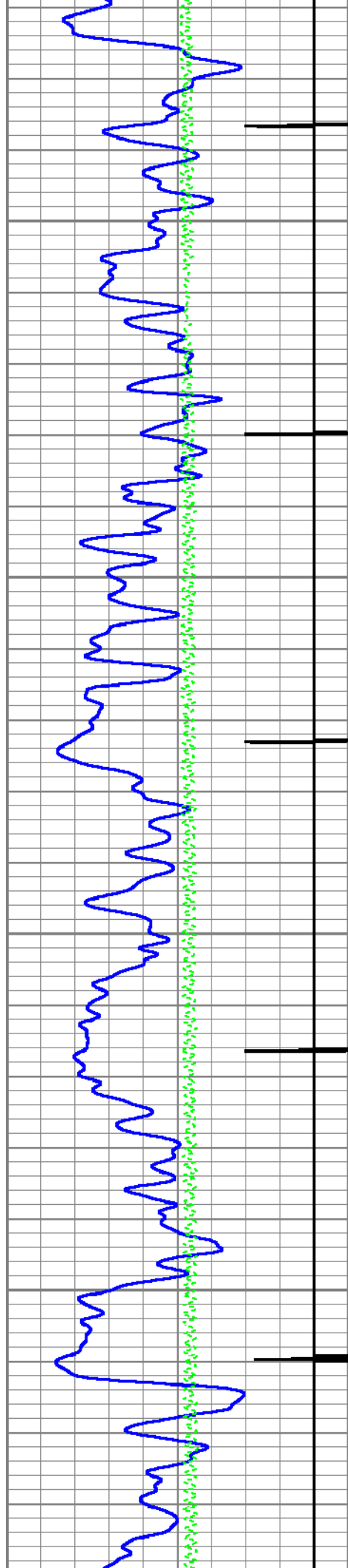




9100

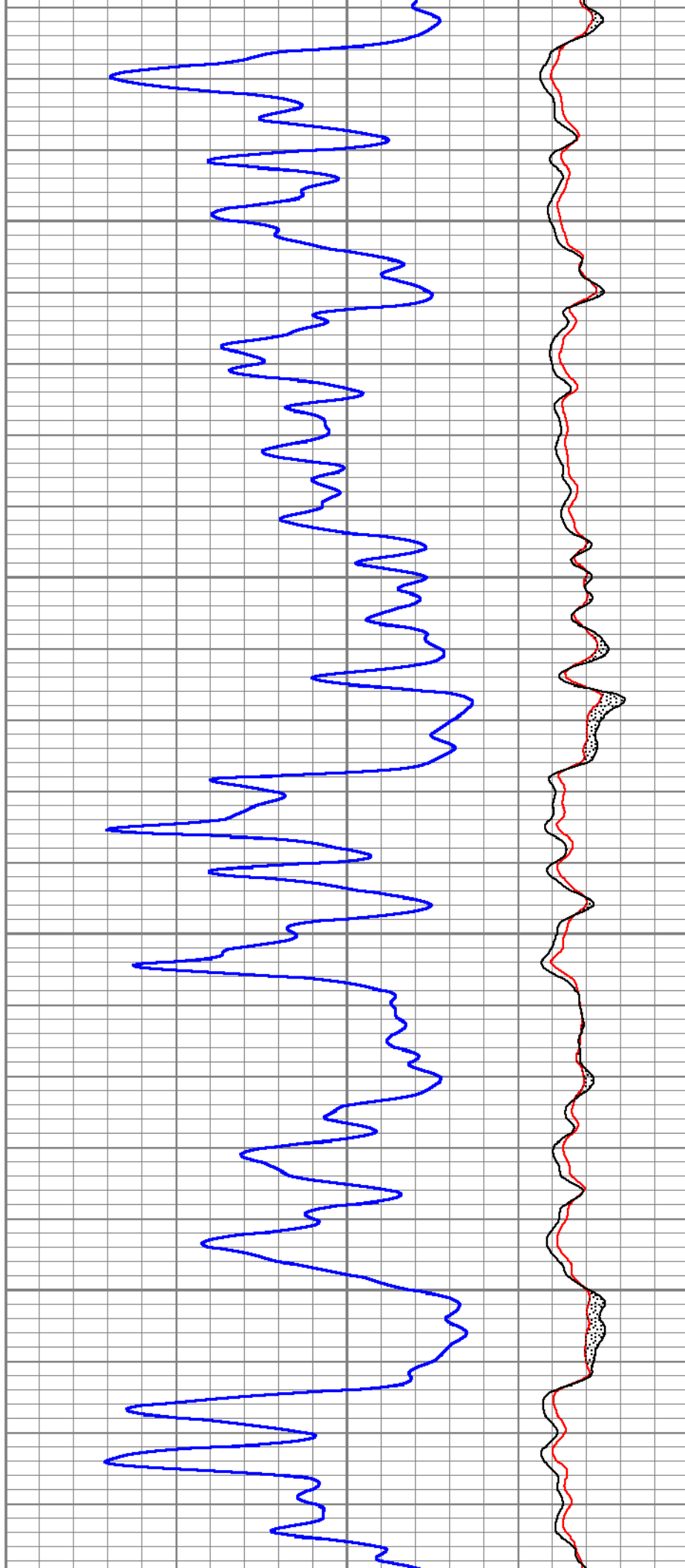
9200



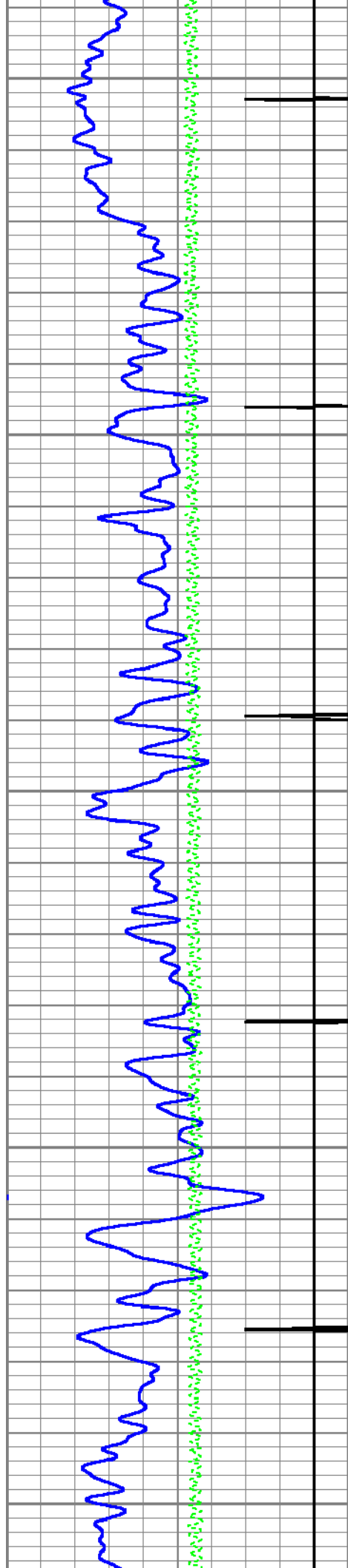


9300

9400



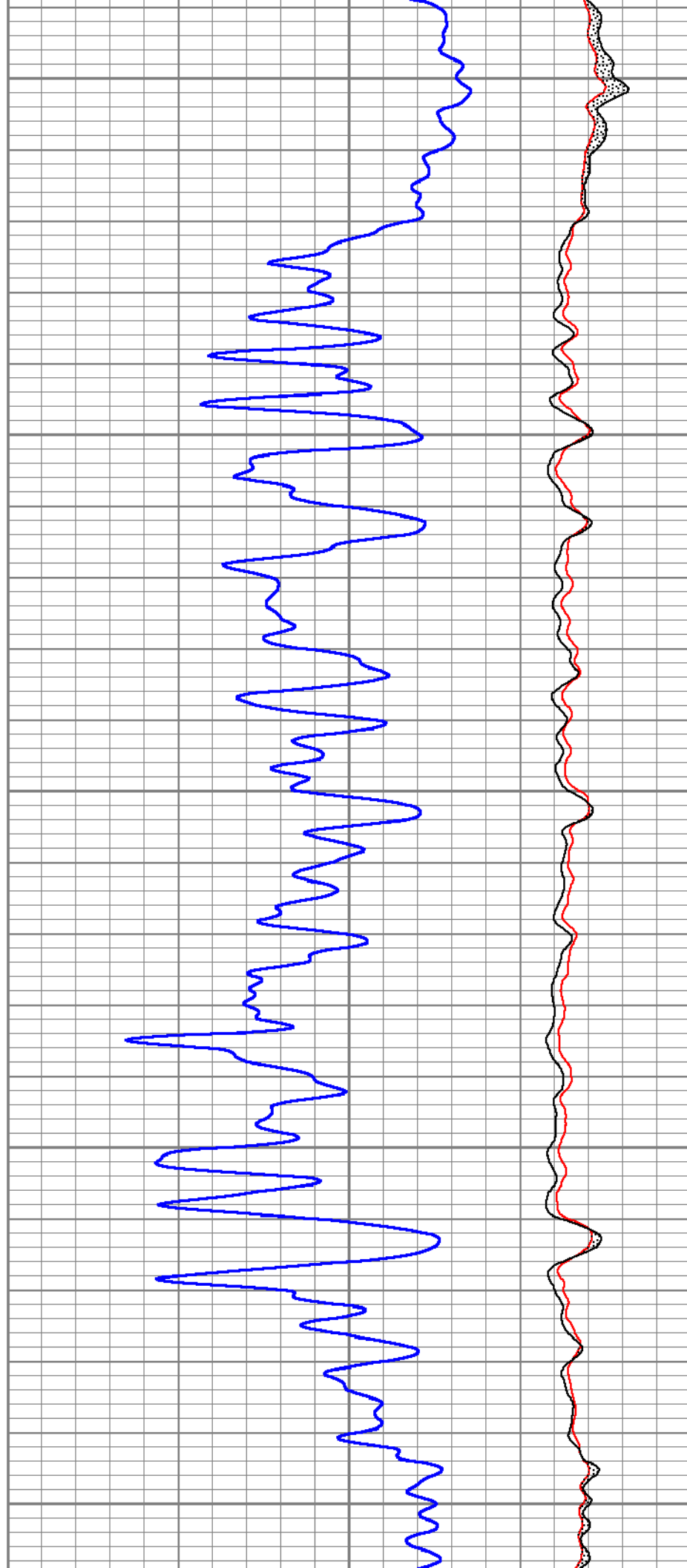


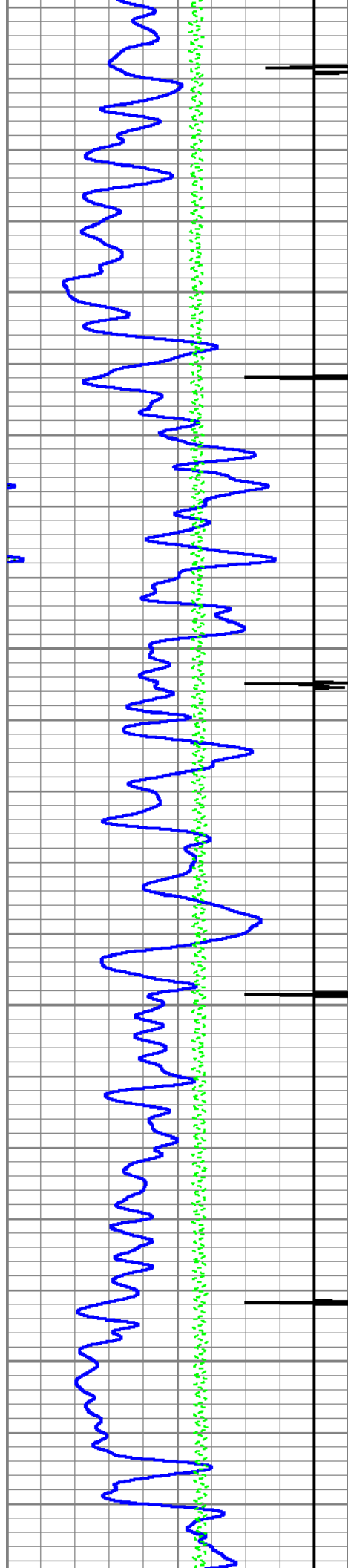


9500

9600

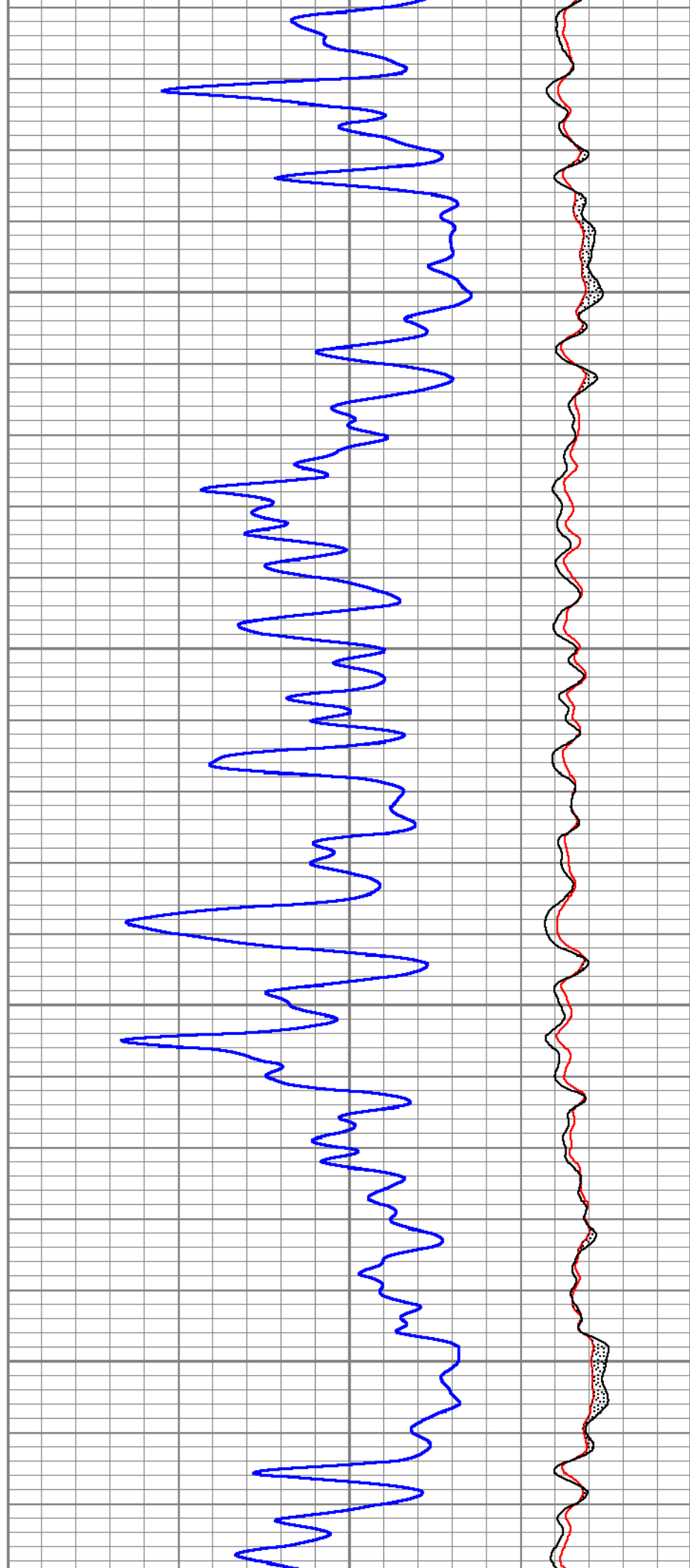
9700

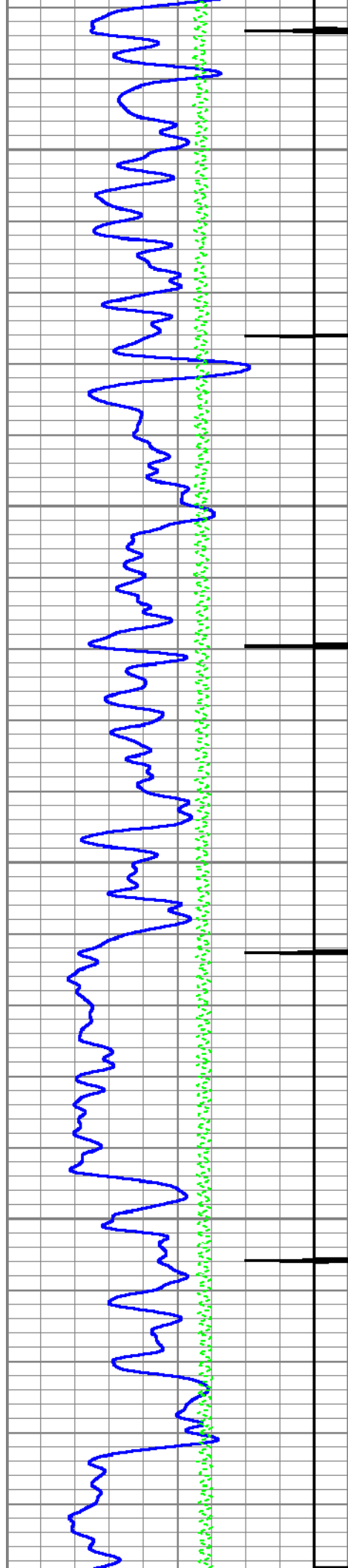




9800

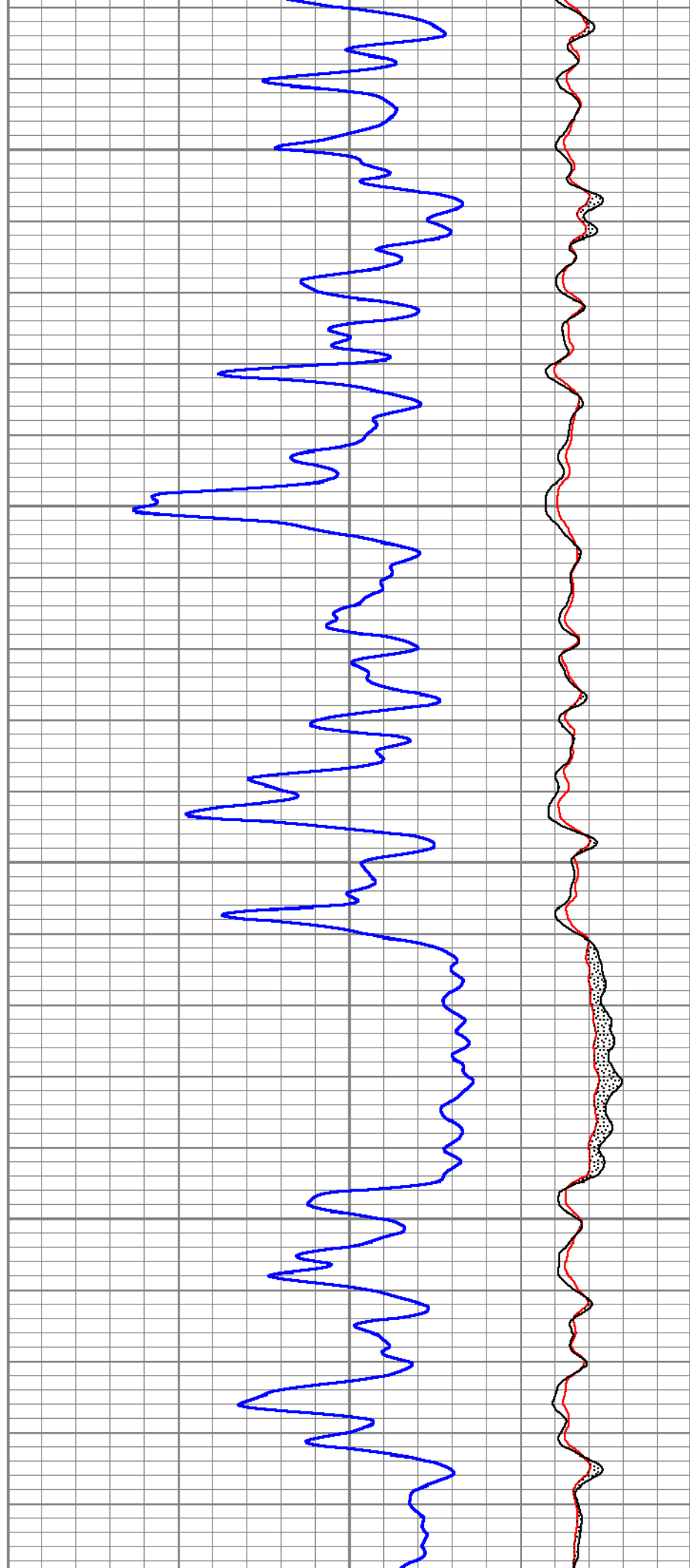
9900

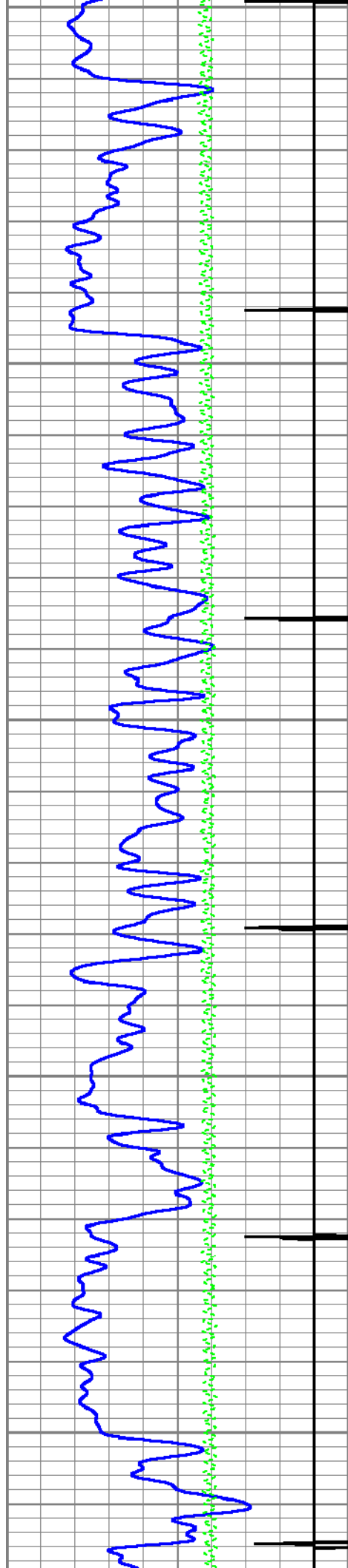




10000

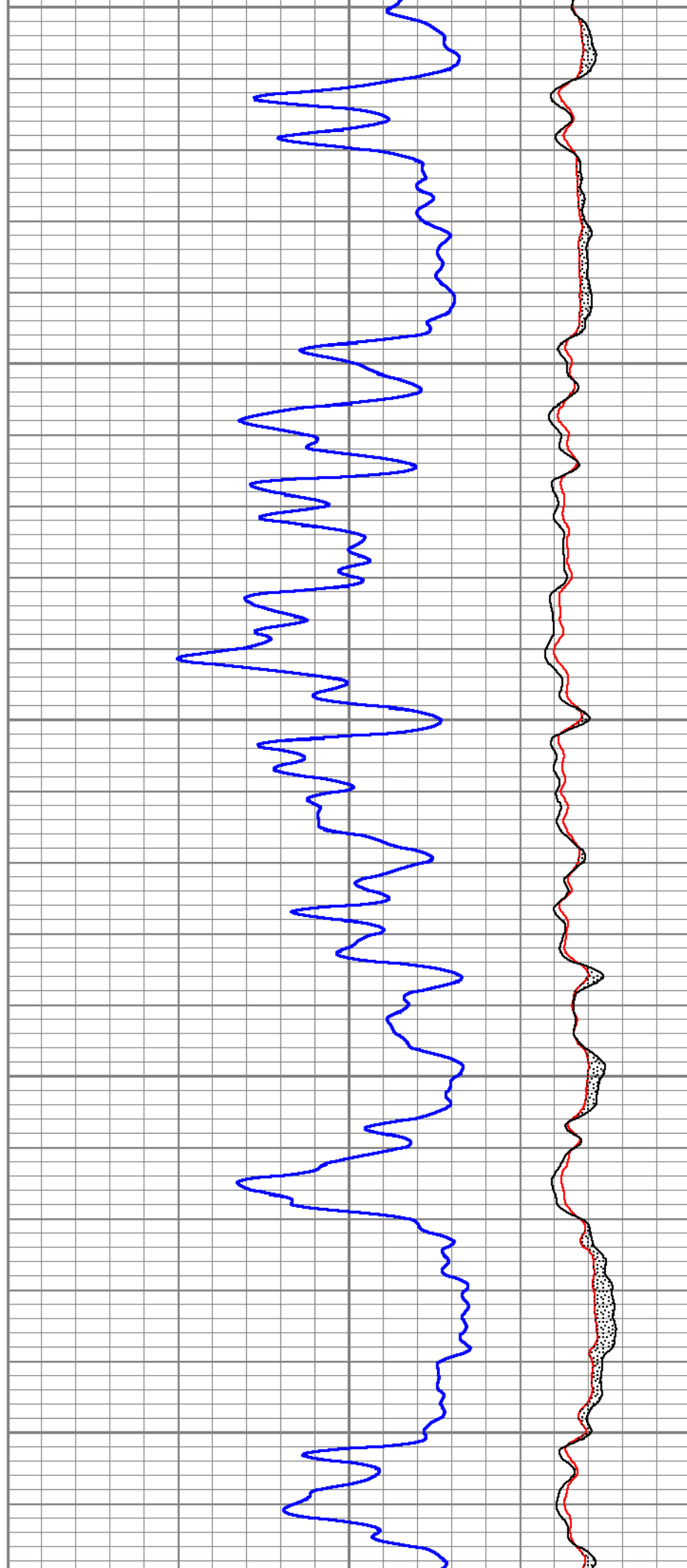
10100

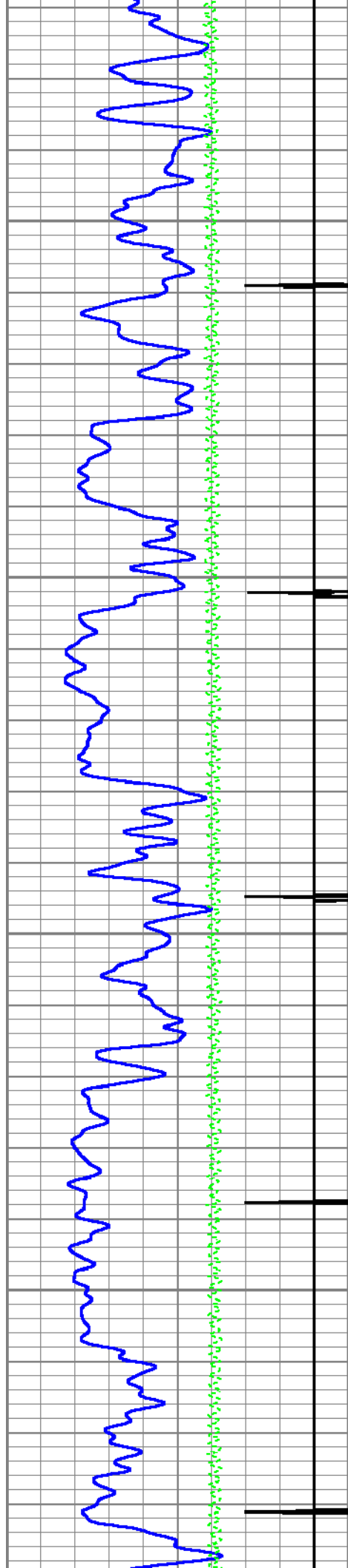




10200

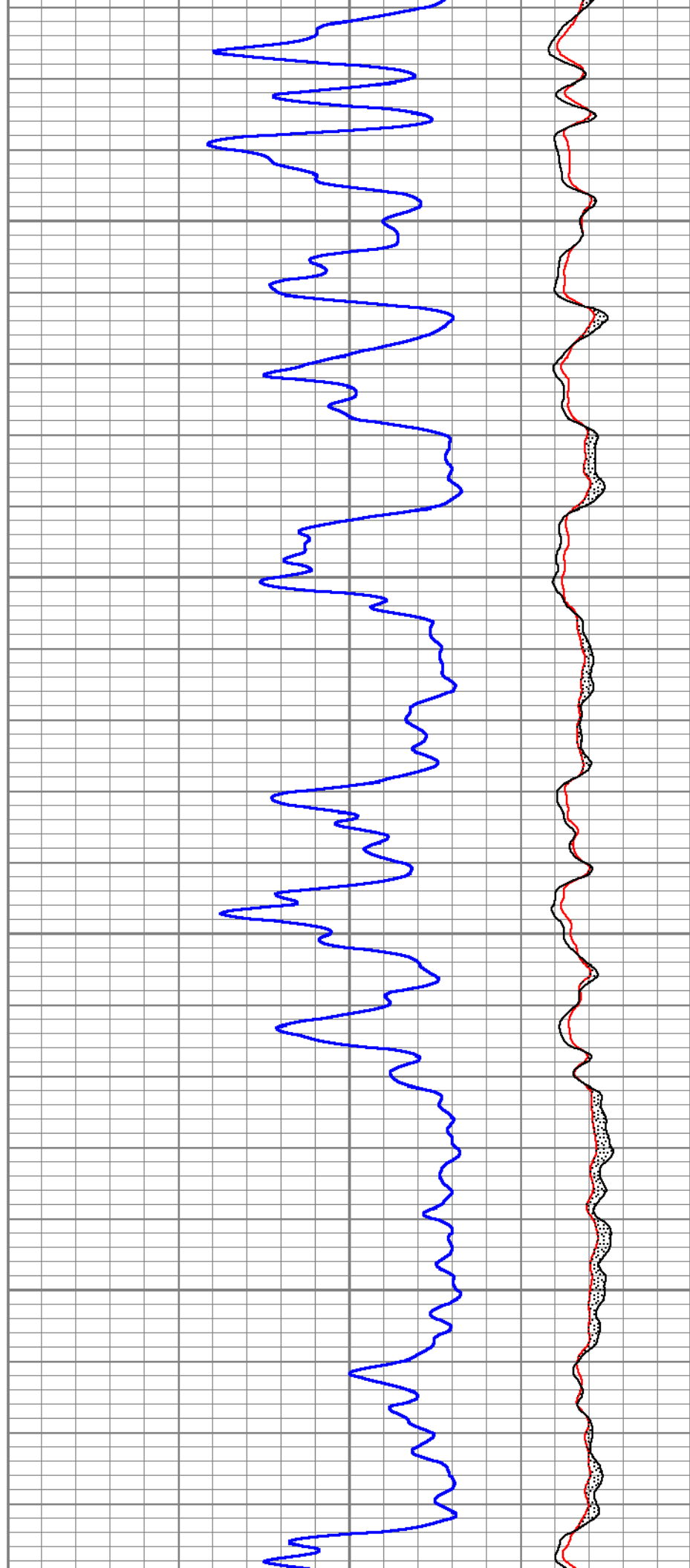
10300





10400

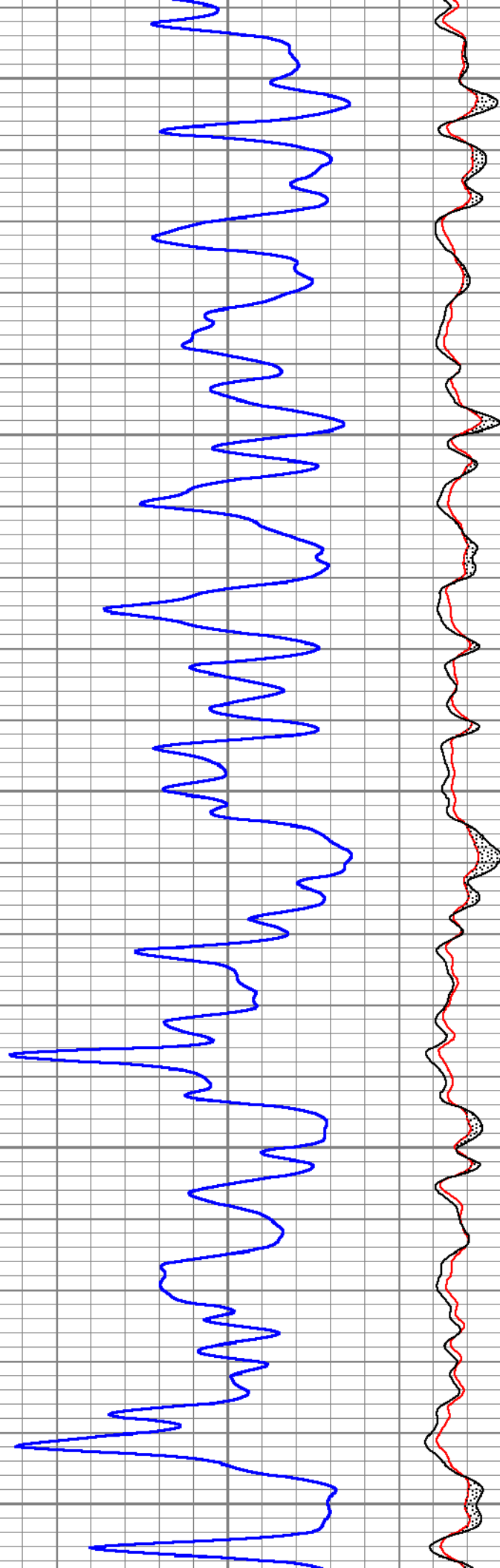
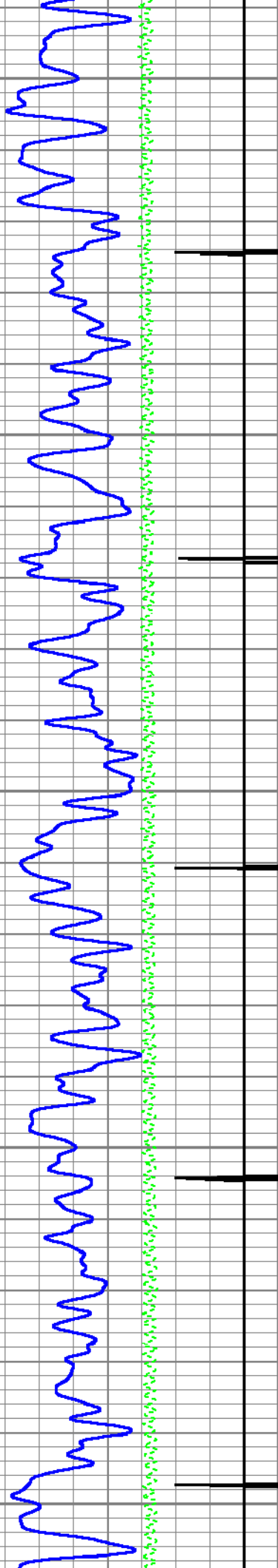
10500

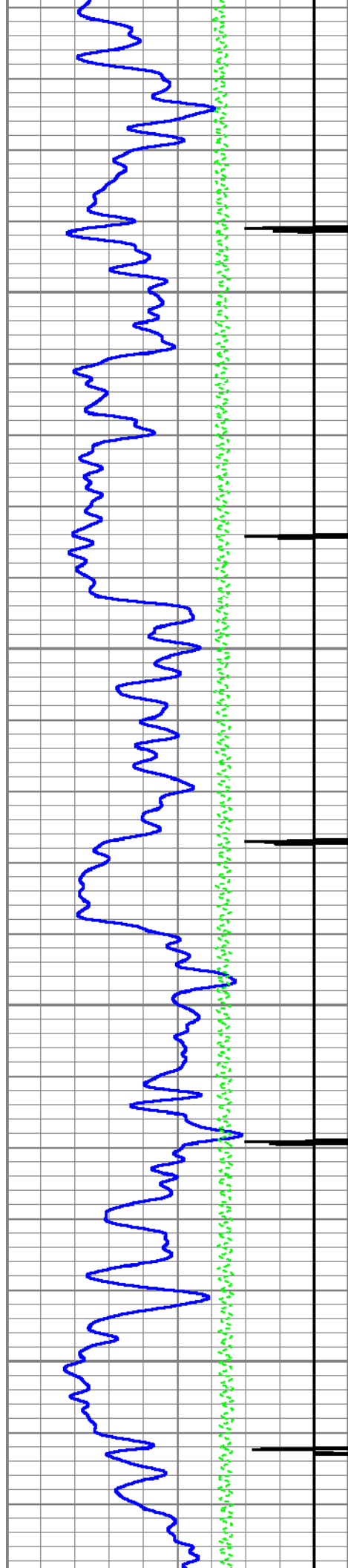


10600

10700

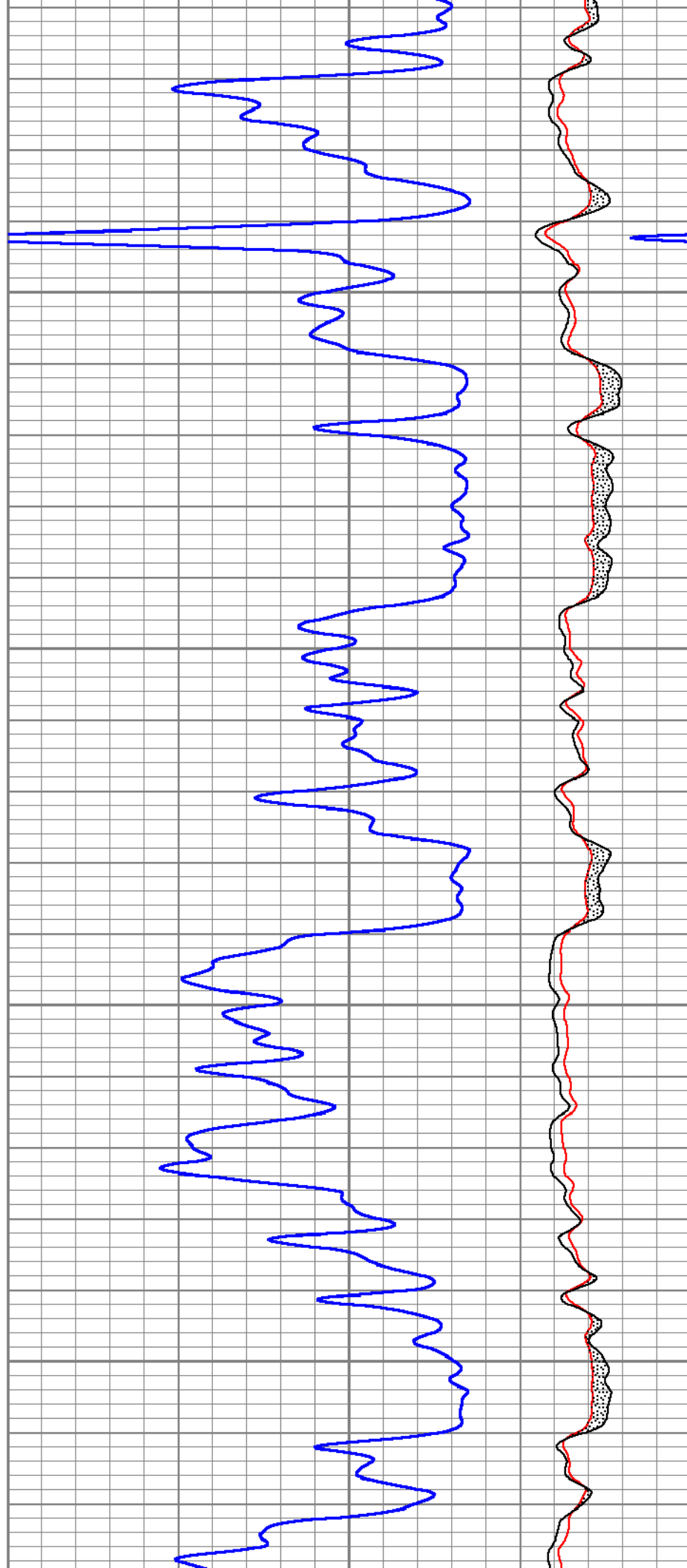
10800

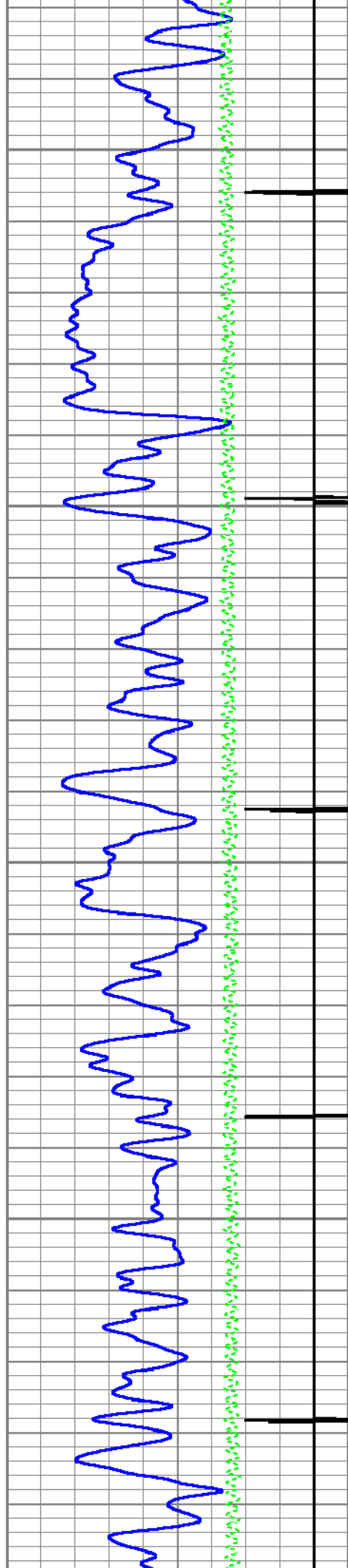




10900

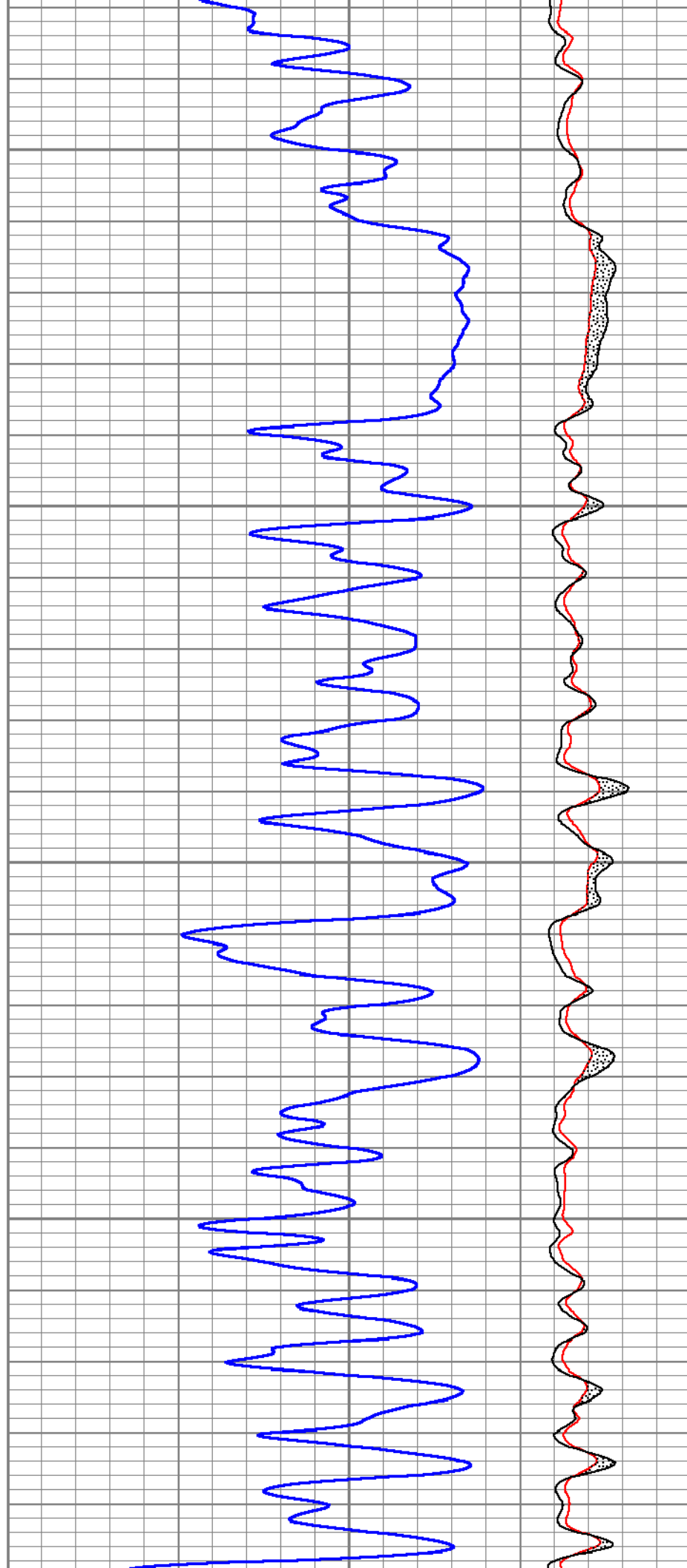
11000



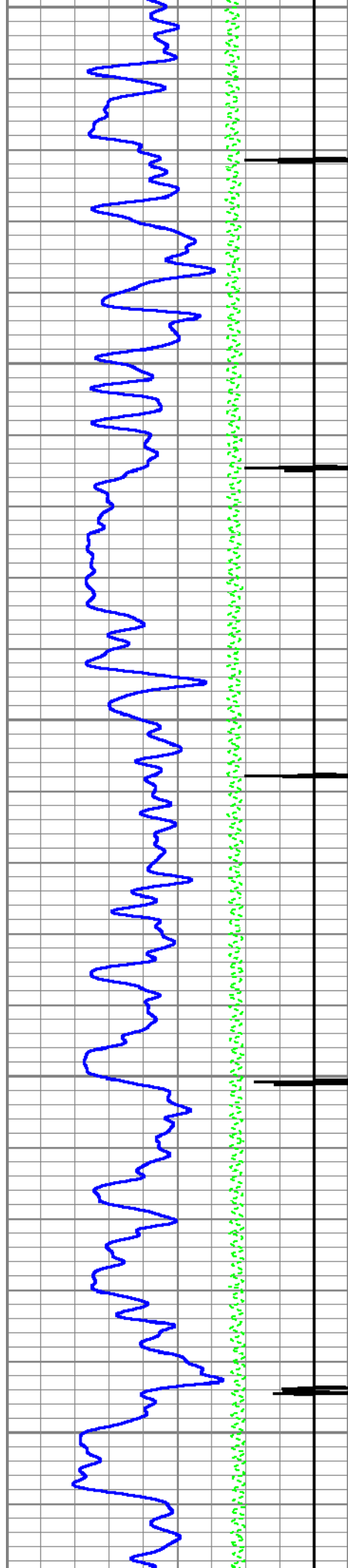


11100

11200

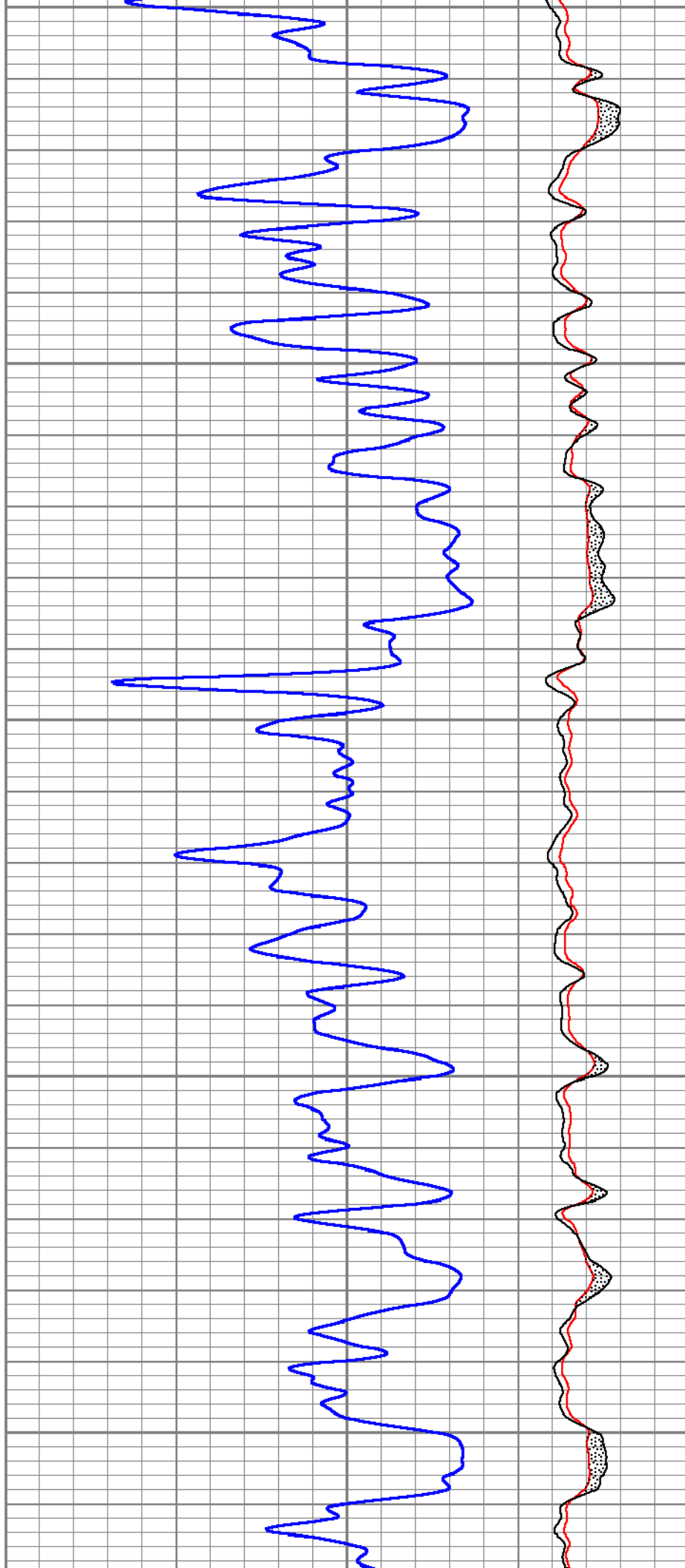


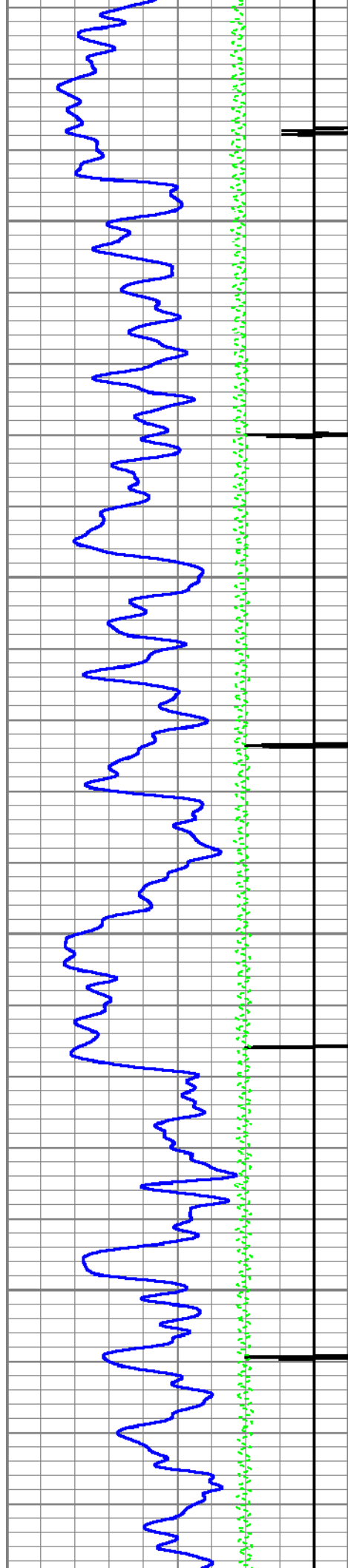




11300

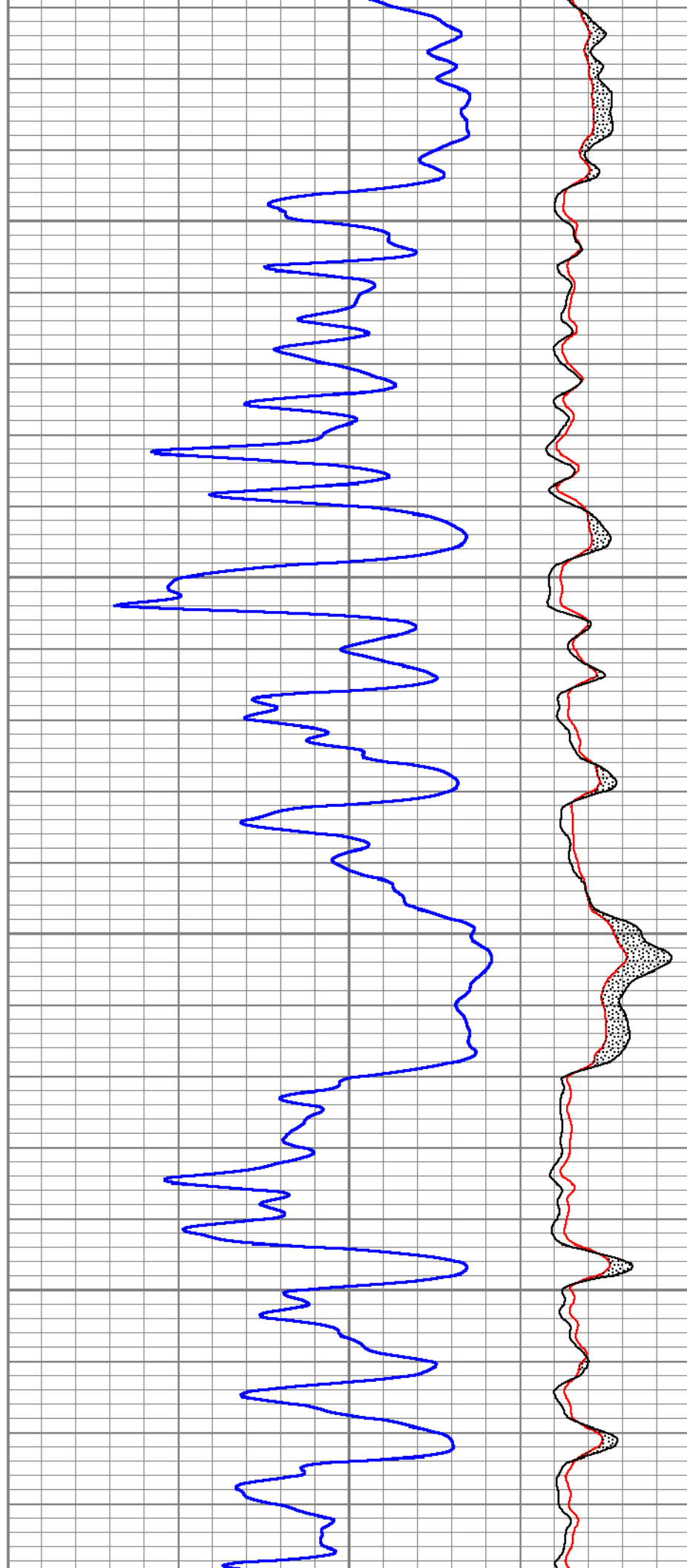
11400

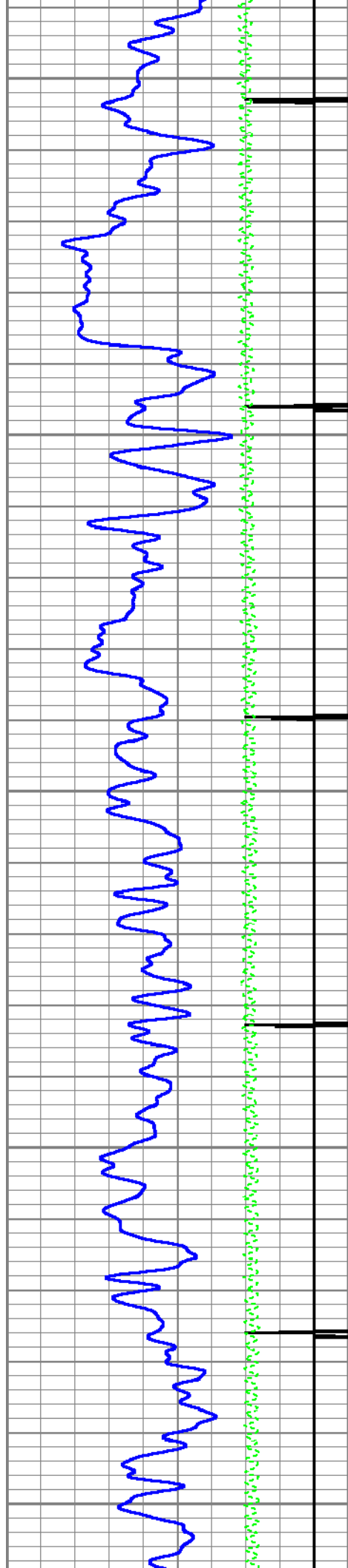




11500

11600

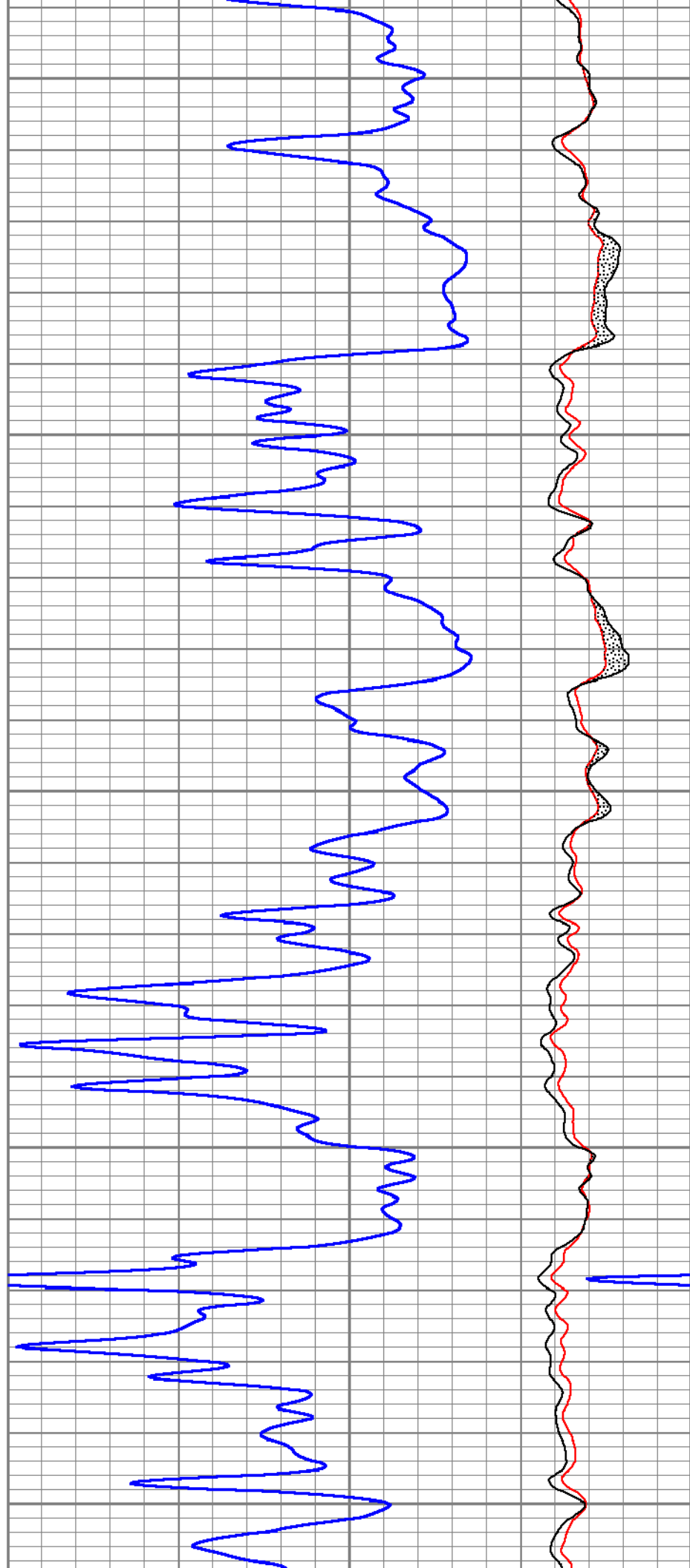


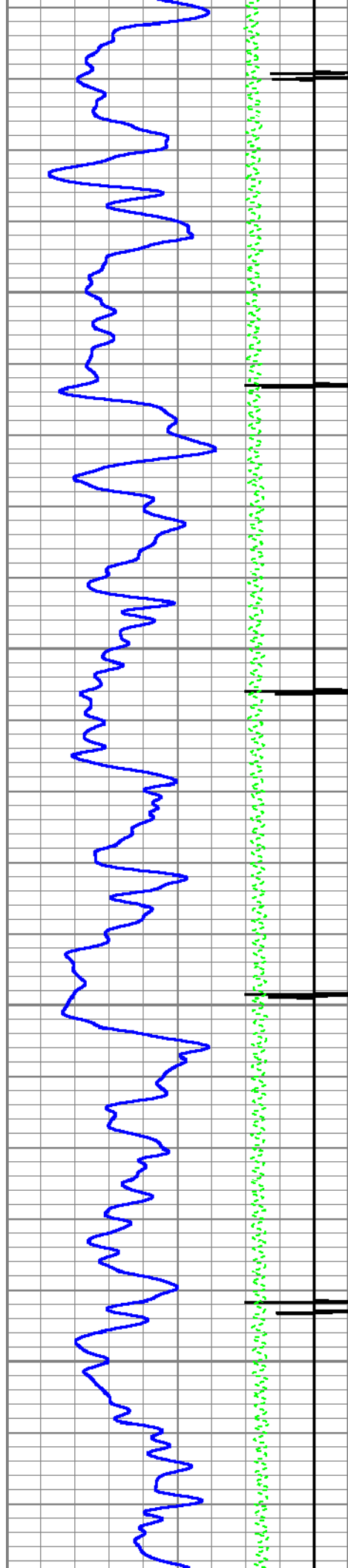


11700

11800

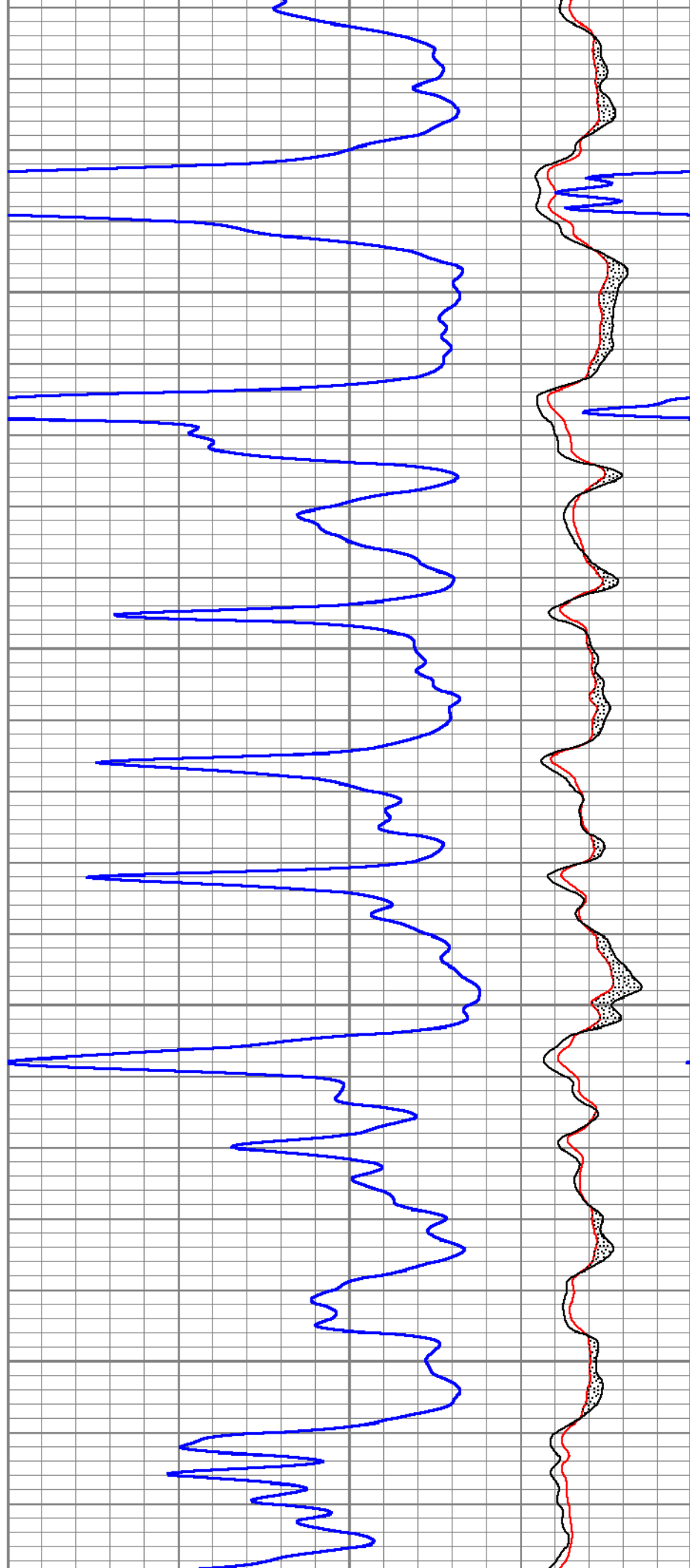
11900

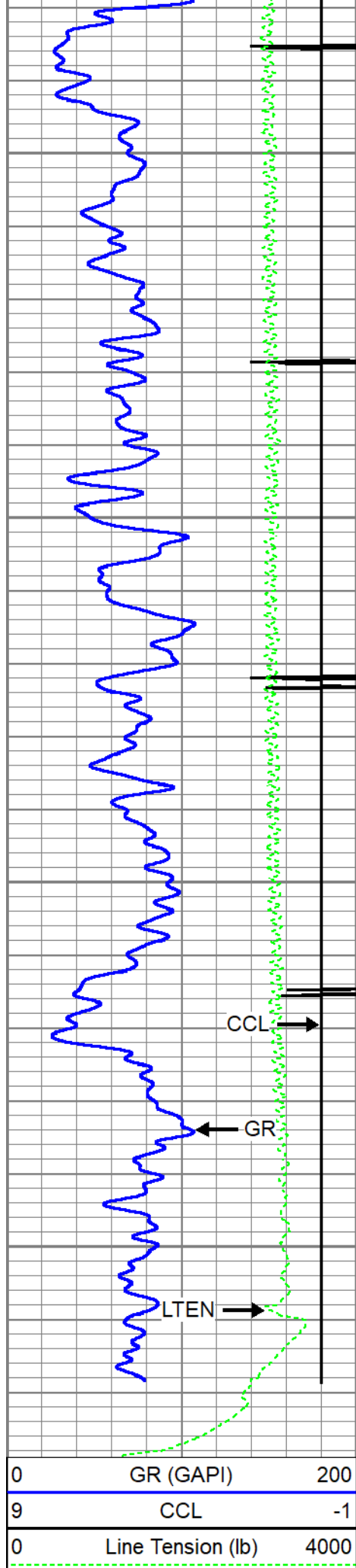




12000

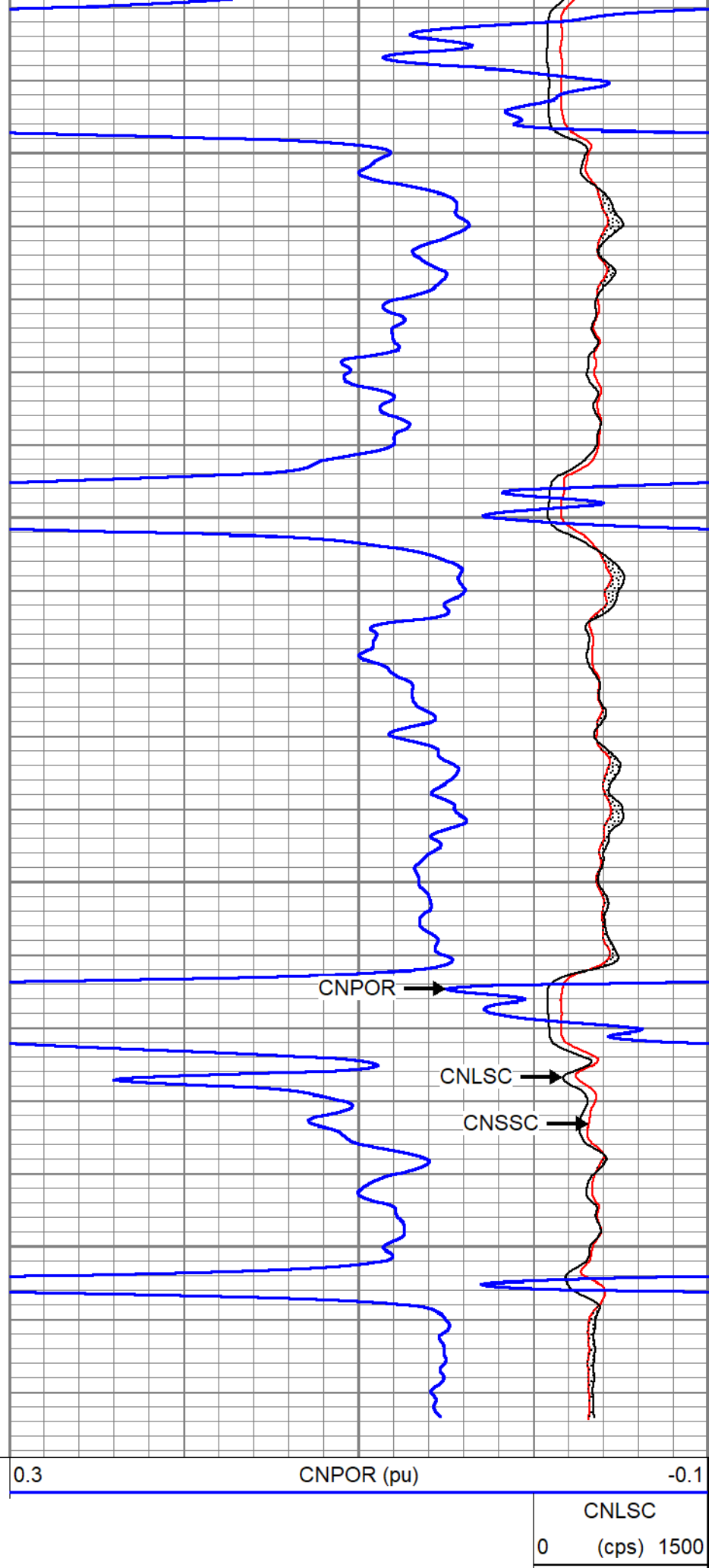
12100





12200

12300



CNLSC
0 (cps) 1500
CNSSC



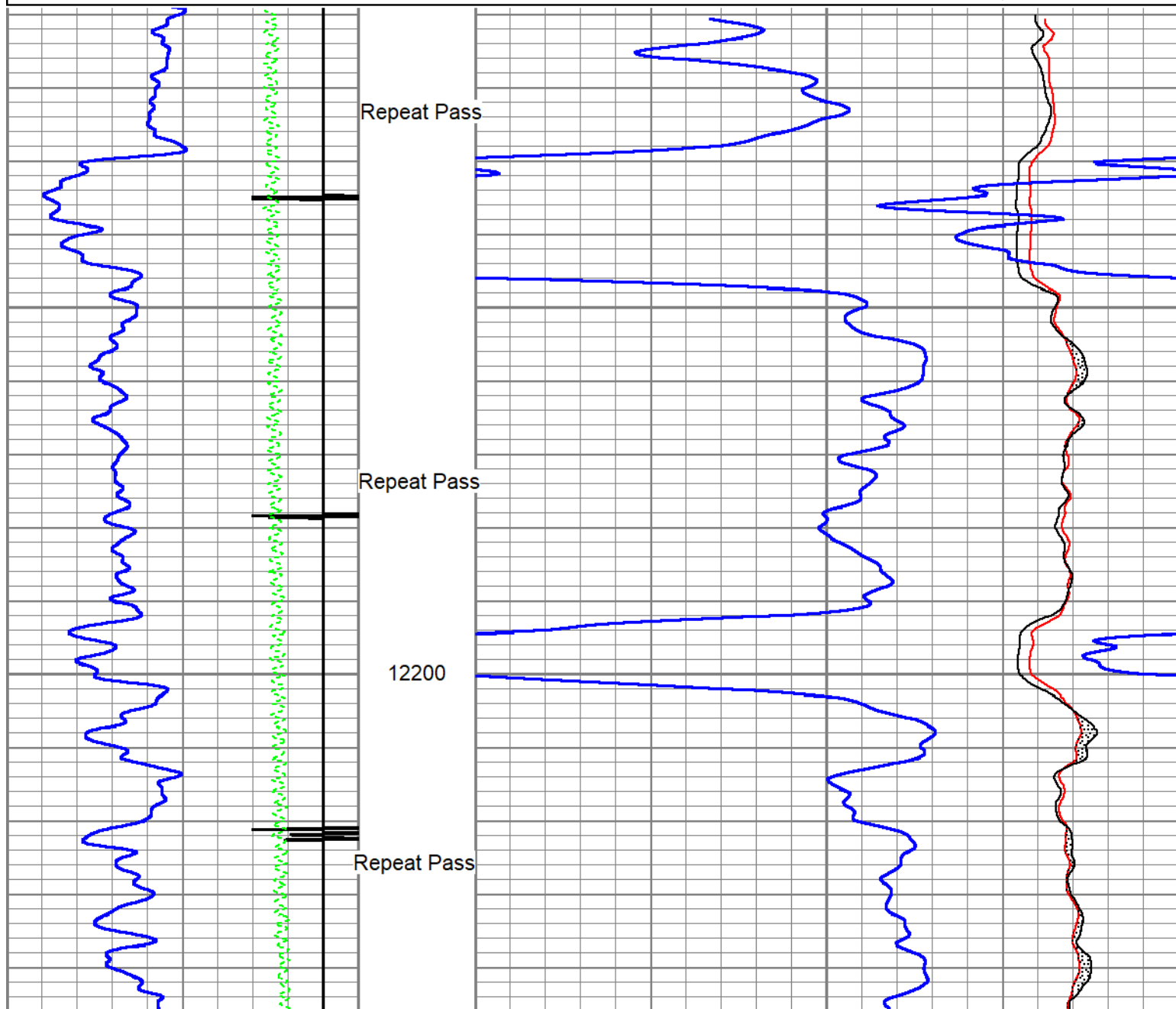
Repeat Pass 5" = 100'

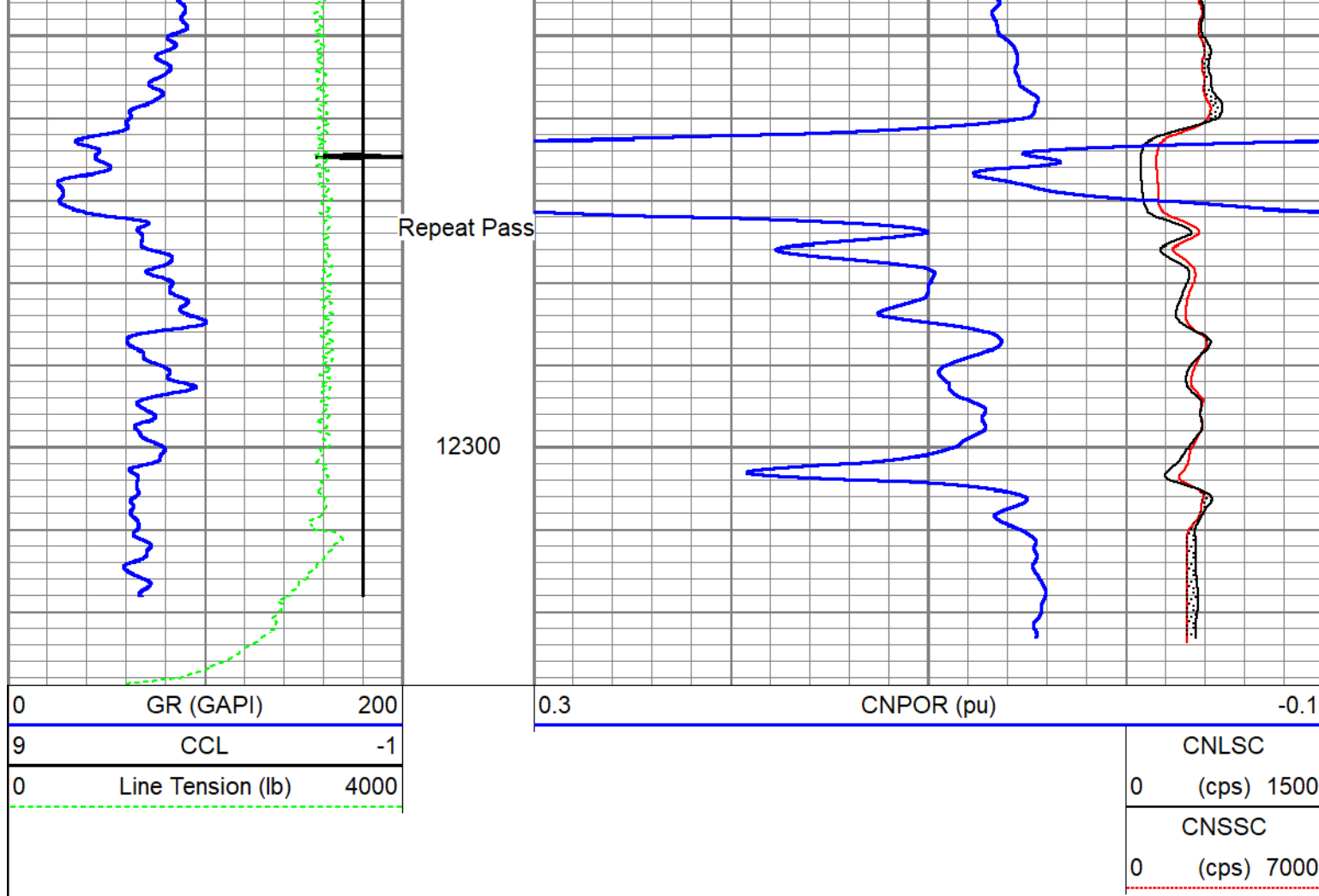
Database File caerus\_bju b26 fed 23a-26-496\_rcbl-cn1\_12-27-2022.db  
 Dataset Pathname repeat  
 Presentation Format twg\_cn1  
 Dataset Creation Tue Dec 27 11:25:31 2022  
 Charted by Depth in Feet scaled 1:240

0 GR (GAPI) 200  
 9 CCL -1  
 0 Line Tension (lb) 4000

0.3 CNPOR (pu) -0.1

CNLSC  
 0 (cps) 1500  
 CNSSC  
 0 (cps) 7000





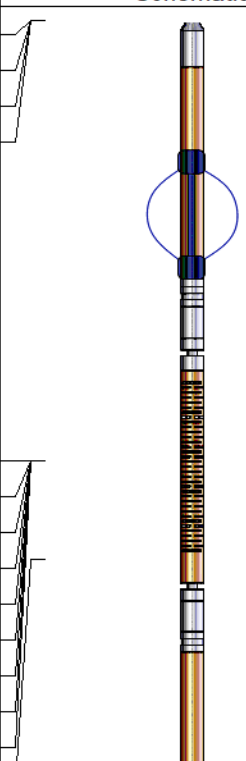
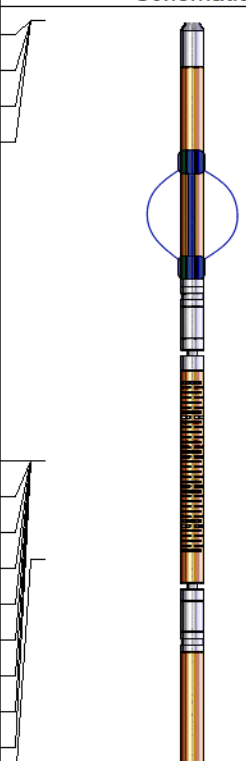
Calibration Report				
Database File	caerus_bju b26 fed 23a-26-496_rcbl-cnI_12-27-2022.db			
Dataset Pathname	main			
Dataset Creation	Tue Dec 27 11:32:42 2022			
Compensated Neutron Calibration Report				
Model:		CNT - 275Dig		
Serial Number:		FW1409-35		
SHOP CALIBRATION		Thu Mar 31 15:47:13 2022		
	Cal Tube	Units		
Tank Ratio	11.6940	SS/LS		
LS Detector	68.71	cps		
SS Detector	748.49	cps		
Tool Ratio	10.8929	SS/LS		
Tool Gain	1.0735	----		
PRE-SURVEY VERIFICATION				
	SS Detector	LS Detector	Measured (p.u.)	Target (p.u.)
POST-SURVEY VERIFICATION				


SS Detector		LS Detector		Measured (p.u.)	Target (p.u.)	
Gamma Ray Calibration Report						
Serial Number:	110255					
Tool Model:	GCTacc_6-Pin-Base					
Performed:	Thu Sep 22 15:12:49 2022					
Calibrator Value:	165.0	GAPI				
Background Reading:	72.3	cps				
Calibrator Reading:	300.9	cps				
Sensitivity:	0.7216	GAPI/cps				
Inclinometer Calibration Report						
Performed:	Thu Sep 22 15:14:31 2022					
	Low Read.	High Read.	Low Ref.	High Ref.		
X Accelerometer	-910.00	1566.00	-1.00	1.00	gee	
Y Accelerometer	-989.00	1748.00	-1.00	1.00	gee	
Z Accelerometer	1.02	-895.47	0.00	1.00	gee	
Segmented Cement Bond Log Calibration Report						
Serial Number:	FW1311-19					
Tool Model:	Probe275acc					
Calibration Casing Diameter:	4.500	in				
Calibration Depth:	38.237	ft				
Master Calibration, performed Thu Dec 22 08:35:22 2022:						
	Raw (v)		Calibrated (mv)		Results	
	Zero	Cal	Zero	Cal	Gain	Offset
3'	0.006	0.750	0.800	81.196	108.042	0.130
CAL	0.002	0.760				
5'	0.015	0.701	0.800	81.196	117.073	-0.921
SUM						
S1	0.007	0.754	0.000	100.000	134.009	-1.003
S2	0.007	0.757	0.000	100.000	133.390	-0.985
S3	0.006	0.767	0.000	100.000	131.461	-0.782
S4	0.007	0.761	0.000	100.000	132.784	-0.989
S5	0.009	0.755	0.000	100.000	133.981	-1.204
S6	0.006	0.747	0.000	100.000	135.070	-0.838
S7	0.007	0.752	0.000	100.000	134.071	-0.884
S8	0.007	0.743	0.000	100.000	135.879	-0.912
Internal Reference Calibration, performed (Not Performed):						
	Raw (v)		Calibrated (v)		Results	



	Zero	Cal	Zero	Cal	Gain	Offset
CAL	0.000	0.000	0.002	0.760	1.000	0.000
Air Zero Calibration, performed Thu Dec 22 08:34:24 2022:						
	Raw (v)		Calibrated (v)		Results	
	Zero		Zero		Offset	
3'	0.000		0.000		0.000	
5'	0.000		0.000		0.000	
SUM						
S1	0.000		0.000		0.000	
S2	0.000		0.000		0.000	
S3	0.000		0.000		0.000	
S4	0.000		0.000		0.000	
S5	0.000		0.000		0.000	
S6	0.000		0.000		0.000	
S7	0.000		0.000		0.000	
S8	0.000		0.000		0.000	

Inclinometer Calibration Report					
Performed:	Thu Jul 28 15:55:38 2022				
	Low Read.	High Read.	Low Ref.	High Ref.	
X Accelerometer	-914.00	901.00	-1.00	1.00	gee
Y Accelerometer	-903.00	898.00	-1.00	1.00	gee
Z Accelerometer	3.47	893.02	0.00	1.00	gee

Sensor	Offset (ft)	Schematic	Description	Length (ft)	O.D. (in)	Weight (lb)
GCT_FMWR	19.32		SO BS CENT-2750-4500 Slip Over 2-3/4" I.D. for 4-1/2" O.D. Casing Bow Spring Centralizer	1.33	3.25	10.00
mSec_Count	19.32					
RBT_Status	19.32					
Error_Ct	19.32					
WVFS8	14.82		RBT8acc-Probe275acc (FW1311-19) 2.75" Radial Corrosion with accelerometer	8.75	2.75	110.00
WVFS7	14.82					
WVFS6	14.82					
WVFS5	14.82					
WVFS4	14.82					
WVFS3	14.82					
WVFS2	14.82					
WVFS1	14.82					
WVF3FT	14.82					

Company	Caerus Piceance LLC.		
Well	BJU B26 FED 23A-26-496		
Field	Grand Valley		
County	Garfield	State	Colorado
	Compensated Neutron		
	Gamma Ray		
	Casing Collar Log		