



Caerus Operating LLC

LONG STRING POST JOB REPORT

BJU B26 FED 23A-26-496 05-045-24446
S:26 T:4S R:96W Garfield CO

CallSheet #: 84214
Proposal #: 64456



LONG STRING Post Job Report

Attention: Mr. Cole Walton | (720) 880-6325 | cwalton@caerusoilandgas.com

Caerus Operating LLC

1001 17TH STREET | DENVER, CO 80202

Dear Mr. Cole Walton,

Thank you for the opportunity to provide cementing services on this well. American Cementing strives to achieve complete customer satisfaction. If you have any questions regarding the services or data provided, please contact American Cementing at any time.

Sincerely,

Krystal Schell

Field Engineer I | (719) 992-1830 | krystal.schell@americacementing.com

Field Office 28730 US-6, Rifle, CO 81650
Phone: (970) 657-1157

Job Details & Summary

Geometry

Type	Function	OD (in)	ID (in)	Weight (lb/ft)	Thread	Top (ft)	Bottom (ft)	Excess (%)
Casing	Outer	9.625	8.921	36	n/a	0	3015	0
Open Hole	Outer	n/a	8.75	n/a	n/a	3000	7241	25
Open Hole	Outer	n/a	8.75	n/a	n/a	7241	12499	0
Casing	Inner	4.5	4	11.6	n/a	0	12477.7	0

Equipment / People

Unit Type	Unit	Power Unit	Employee #1	Employee #2
Field Storage Silo	FSS-469			
Field Storage Silo	FSS-468			
Cement Auxiliary Equipment	CTF-148	TRC-053	Balint, Daniel	
AS Cement Trailer Float	CTF-901	TRC-054	Balint, Daniel	Jackson, Duewayne
AS Cement Trailer Float	CTF-048	TRC-059	Richey, Steven	
Bulk Trailer	CTF-246	TRC-424	Richey, Steven	
Cement Pump	CPF-011	TRH-1137	Carrasco, Joel	
Light Duty Vehicles	LDV-062		Lancaster, Stephen	Bradbrook, Jeremy
Light Duty Vehicles	LDV-083		Woronovitch, Collin	

Timing

Event	Date/Time
Call Out	10/29/2022 20:13
Depart Facility	10/29/2022 21:45
On Location	10/30/2022 00:35
Rig Up Iron	10/30/2022 00:45
Job Started	10/30/2022 08:05
Job Completed	10/30/2022 11:37
Rig Down Iron	10/30/2022 12:05
Depart Location	10/30/2022 14:30

General Job Information

Metrics	Value
Well Fluid Density	10.4 lb/gal
Well Fluid Type	WBM
Rig Circulation Vol	1500 bbls
Rig Circulation Time	2 hours
Calculated Displacement	192 bbls
Actual Displacement	192 bbls
Total Spacer to Surface	0 bbls
Total CMT to Surface	0 bbls
Well Topped Out	No

Job Details

Metrics	Value
Flare Prior to Job	Yes
Flare Prior to Job	0 units
Flare During Job	No
Flare During Job	0 units
Flare at End of Job	No
Flare at End of Job	0 units
Well Full Prior to Job	Yes
Well Fluid Density Into Well	10.4 lb/gal
Well Fluid Density Out of Well	10.35 lb/gal

Job Details

(cont.)	
Metrics	Value
BHCT	223 °F
BHST	291 °F

Water Analysis

Metrics	Value	Recommended
Water Source	Upright Rig Tank	
Temperature	48 °F	50-80 °F
pH Level	7	5.5-8.5
Chlorides	75 mg/L	0-3000 mg/L
Total Alkalinity	120	0-1000
Total Hardness	70 mg/L	0-500 mg/L
Carbonates	na mg/L	0-100 mg/L
Sulfates	200 mg/L	0-1500 mg/L
Potassium	450 mg/L	0-3000 mg/L
Iron	0 mg/L	0-300 mg/L

Circulation

Lost Circulation Experienced
No

Job Execution Information

Fluid	Product	Function	Density (lb/gal)	Yield (ft ³ /sk)	Water Rq. (gal/sk)	Water Rq. (gal/bbl)	Volume (sks)	Volume (bbl)	Designed Top (ft)
1	Mud Flush	Flush	8.45			40.86		20.00	653
2	Scavenger	Scavenger	11.50	2.76	16.68		235.00	115.48	1000
3	Lead	Lead	12.70	2.00	11.00		814.00	290.25	3000
4	Tail	Tail	13.50	2.00	9.66		818.00	290.89	7241
5	Water + KCL Sub	DisplacementFinal	8.34			42.00		195.00	0

Job Fluid Details

Fluid	Type	Fluid	Product	Function	Conc.	Uom
1	Flush	Mud Flush	SAPP	Surfactant	10.00	lb/bbl
1	Flush	Mud Flush	SS-201	Surfactant	0.50	gal/bbl
2	Scavenger	Scavenger	ASTM TYPE I/II	Cement	100.00	%
2	Scavenger	Scavenger	BA-60	GasMigration	0.30	%BWOB
2	Scavenger	Scavenger	FP-24	Defoamer	0.30	%BWOB
2	Scavenger	Scavenger	GW-86	Viscosifier	0.20	%BWOB
2	Scavenger	Scavenger	IntegraSeal PHENO	LostCirculation	3.00	lb/sk
2	Scavenger	Scavenger	R-3	Retarder	0.50	%BWOB
2	Scavenger	Scavenger	STATIC FREE	Other	0.01	lb/sk
3	Lead	Lead	ASTM TYPE I/II	Cement	100.00	%
3	Lead	Lead	BA-60	GasMigration	0.30	%BWOB
3	Lead	Lead	FL-66	FluidLoss	0.50	%BWOB
3	Lead	Lead	FP-24	Defoamer	0.30	%BWOB
3	Lead	Lead	GW-86	Viscosifier	0.10	%BWOB
3	Lead	Lead	IntegraSeal PHENO	LostCirculation	3.00	lb/sk
3	Lead	Lead	R-3	Retarder	0.30	%BWOB
3	Lead	Lead	STATIC FREE	Other	0.01	lb/sk
4	Tail	Tail	CLASS G	Cement	70.00	%
4	Tail	Tail	FLY ASH (POZZOLAN)	Extender	30.00	%
4	Tail	Tail	BA-60	GasMigration	0.20	%BWOB
4	Tail	Tail	BENTONITE	Viscosifier	8.00	%BWOB
4	Tail	Tail	FL-24	FluidLoss	0.40	%BWOB

Fluid	Type	Fluid	Product	Function	Conc.	Uom
4	Tail	Tail	FP-24	Defoamer	0.30	%BWOB
4	Tail	Tail	IntegraSeal PHENO	LostCirculation	3.00	lb/sk
4	Tail	Tail	R-3	Retarder	0.25	%BWOB
4	Tail	Tail	S-8	StrengthRetrogression	25.00	%BWOB

Job Logs

Line	Event	Date (MM/DD/YY)	Time (HH:MM)	Density (lb/gal)	Pump Rate (bpm)	Pump Volume (bbls)	Pipe Pressure (psi)	Comment
1	Callout	10/29/2022	20:13					CREW CALLED OUT FOR ON LOCATION TIME OF 10/30/22 01:00 AM
2	Depart Location	10/29/2022	21:45					CREW DEPARTS RCO YARD FOR LOCATION
3	Arrive On Location	10/30/2022	00:35					FULL CREW ARRIVES ON LOCATION
4	Rig Up Iron	10/30/2022	00:45					RIG UP IRON AND HOSES, DONE RIGGING UP AT 2:00
5	Safety Meeting	10/30/2022	08:05					JSA SAFETY MEETING WITH AC CREW, RIG HANDS, AND CUSTOMER REP
6	Fill Lines	10/30/2022	08:38	8.34	5	10	337	FILL LINES WITH 10 BBLS FRESH WATER
7	Pressure Test Lines	10/30/2022	08:41				5128	PRESSURE TEST LINES TO 5128 PSI
8	Pump Mudflush	10/30/2022	08:46	8.43	5	20	268	PUMP MUDFLUSH 20 BBLS
9	Pump Scavenger	10/30/2022	08:50	11.5	6	5	479	BEGIN PUMPING 11.5 PPG SCAVENGER SLURRY, (RIG GOT RETURNS @27BBLS OF SCAVENGER PUMPED 8:56 1200CFM AIR)
10	Pump Scavenger	10/30/2022	09:00	11.5	6	50	482	50 BBLS SCAVENGER PUMPED
11	Pump Scavenger	10/30/2022	09:09	11.5	6	100	383	100 BBLS SCAVENGER PUMPED
12	Pump Scavenger	10/30/2022	09:13	11.5	4	115	227	115 BBLS SCAVENGER PUMPED
13	Pump Lead Cement	10/30/2022	09:14	12.7	6	5	240	BEGIN PUMPING 12.7 PPG LEAD CEMENT, DENSITY VERIFIED WITH MUD SCALE (AIR TO 800 CFM @40BBLS LEAD PUMPED)
14	Pump Lead Cement	10/30/2022	09:23	12.7	6	50	554	50 BBLS LEAD CEMENT PUMPED
15	Pump Lead Cement	10/30/2022	09:31	12.7	6	100	500	100 BBLS LEAD CEMENT PUMPED
16	Pump Lead Cement	10/30/2022	09:39	12.7	6	150	619	150 BBLS LEAD CEMENT PUMPED
17	Pump Lead Cement	10/30/2022	09:48	12.7	6	200	546	200 BBLS LEAD CEMENT PUMPED (AIR TO 400CFM TO 400CFM @230BBLS LEAD PUMPED)
18	Pump Lead Cement	10/30/2022	10:09	12.7	4	290	538	290 BBLS LEAD CEMENT PUMPED
19	Pump Tail Cement	10/30/2022	10:10	13.5	6	5	697	BEGIN PUMPING TAIL AT 13.5 PPG, DENSITY VERIFIED WITH MUD SCALE
20	Pump Tail Cement	10/30/2022	10:19	13.5	6	50	890	50 BBLS TAIL CEMENT PUMPED
21	Pump Tail Cement	10/30/2022	10:28	13.5	5.5	100	907	100 BBLS TAIL CEMENT PUMPED (LOST CIRCULATION @ 120BBLS OF LEAD PUMPED)
22	Pump Tail Cement	10/30/2022	10:36	13.5	5.5	150	921	150 BBLS TAIL CEMENT PUMPED, RIG SHUTS DOWN FLOW TO PARASITE LINE
23	Pump Tail Cement	10/30/2022	10:43	13.5	5.5	200	739	200 BBLS TAIL CEMENT PUMPED
24	Pump Tail Cement	10/30/2022	10:51	13.5	5	250	549	250 BBLS TAIL CEMENT PUMPED (RIG RECOVERD 638 BBLS MUD)
25	Pump Tail Cement	10/30/2022	11:02	13.5	5	291	563	291 BBLS TAIL CEMENT PUMPED
26	Clean Pumps and Lines	10/30/2022	11:03					SHUT DOWN, WASH PUMP AND LINES
27	Drop Top Plug	10/30/2022	11:08	8.34	7	5	452	DROP TOP PLUG, WITNESSED BY CUSTOMER REP. BEGIN DISPLACEMENT

Line	Event	Date (MM/DD/YY)	Time (HH:MM)	Density (lb/gal)	Pump Rate (bpm)	Pump Volume (bbls)	Pipe Pressure (psi)	Comment
28	Pump Displacement	10/30/2022	11:16	8.34	7.2	50	790	50 BBLS DISPLACEMENT PUMPED, (CAUGHT CEMENT AT 45BBLS PUMPED)
29	Pump Displacement	10/30/2022	11:24	8.34	7.2	100	1525	100 BBLS DISPLACEMENT PUMPED (NO RETURN)
30	Pump Displacement	10/30/2022	11:31	8.34	7.2	150	2140	150 BBLS DISPLACEMENT PUMPED
31	Pump Displacement	10/30/2022	11:34	8.34	7.2	175	2550	175 BBLS DISPLACEMENT PUMPED
32	Pump Displacement	10/30/2022	11:35	8.34	4	180	2305	180 BBLS DISPLACEMENT PUMPED (SLOW TO 4 BPM FOR PLUG TO LAND)
33	Pump Displacement	10/30/2022	11:37	8.34	4	192	2365	192 BBLS DISPLACED FCP 2365
34	Land Plug	10/30/2022	11:37	8.34	4	192	3309	LAND PLUG FINAL BUMP PRESS 3309
35	Check Floats	10/30/2022	11:40					2.5 BBLS BACK FLOATS ARE HOLDING
36	Rig Down Iron	10/30/2022	12:05					RIG DOWN IRON AND HOSES, PICKLE PUMP AND LINES, BLOW DOWN IRON AND WASH UP
37	Depart Location	10/30/2022	14:30					LEAVE LOCATION

Pump Diagrams

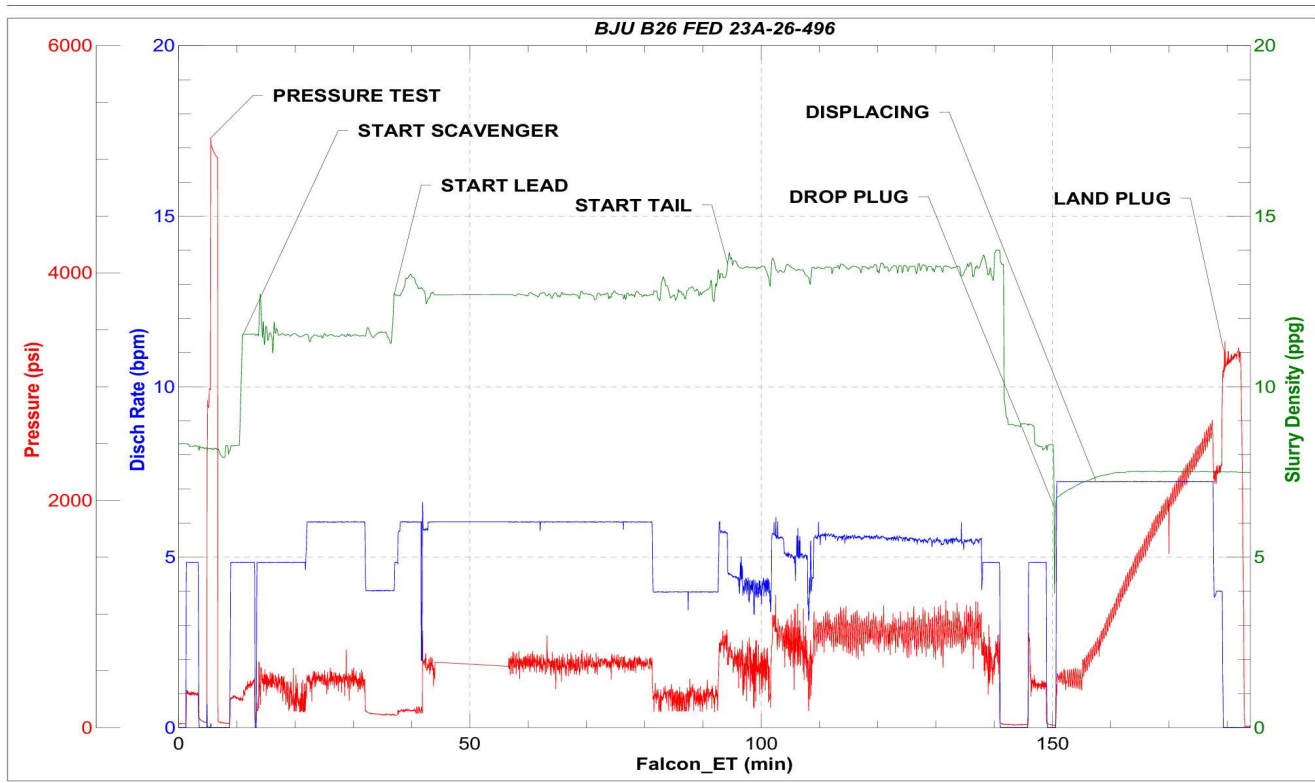


JobMaster Program Version 5.01C1

Job Number: 84214

Customer: CAERUS

Well Name: BJU B26 FED 23A-26-496



Job Start: Sunday, October 30, 2022