

Project: Garfield County, CO
 Site: BJU B26 496 Pad
 Well: BJU B26 FED 23A-26 496
 Wellbore: Wellbore #1
 Design: Design #2
 Latitude: 39.677359
 Longitude: -108.137749
 Ground Level: 8211.0
 RKB @ 8241.0usft (30')

PROJECT DETAILS: Garfield County, CO

Geodetic System: Universal Transverse Mercator (US Survey Feet)
 Datum: NAD 1927 - Western US
 Ellipsoid: Clarke 1866
 Zone: Zone 12N (114 W to 108 W)
 System Datum: Mean Sea Level

REFERENCE INFORMATION

Vertical (TVD) Reference: RKB @ 8241.0usft (30')
 Section (VS) Reference: Slot - 23A-26(0.0N, 0.0E)
 Measured Depth Reference: RKB @ 8241.0usft (30')
 Calculation Method: Minimum Curvature

SECTION DETAILS

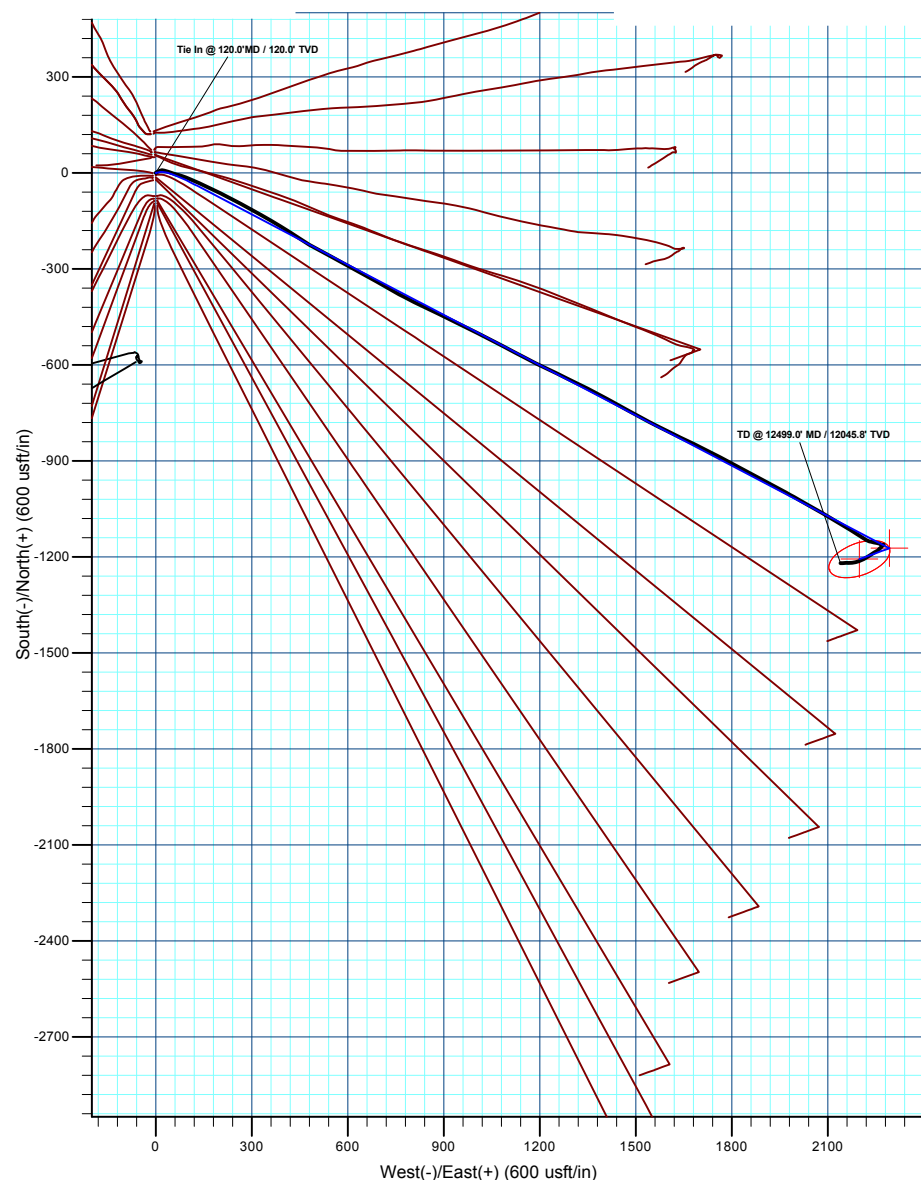
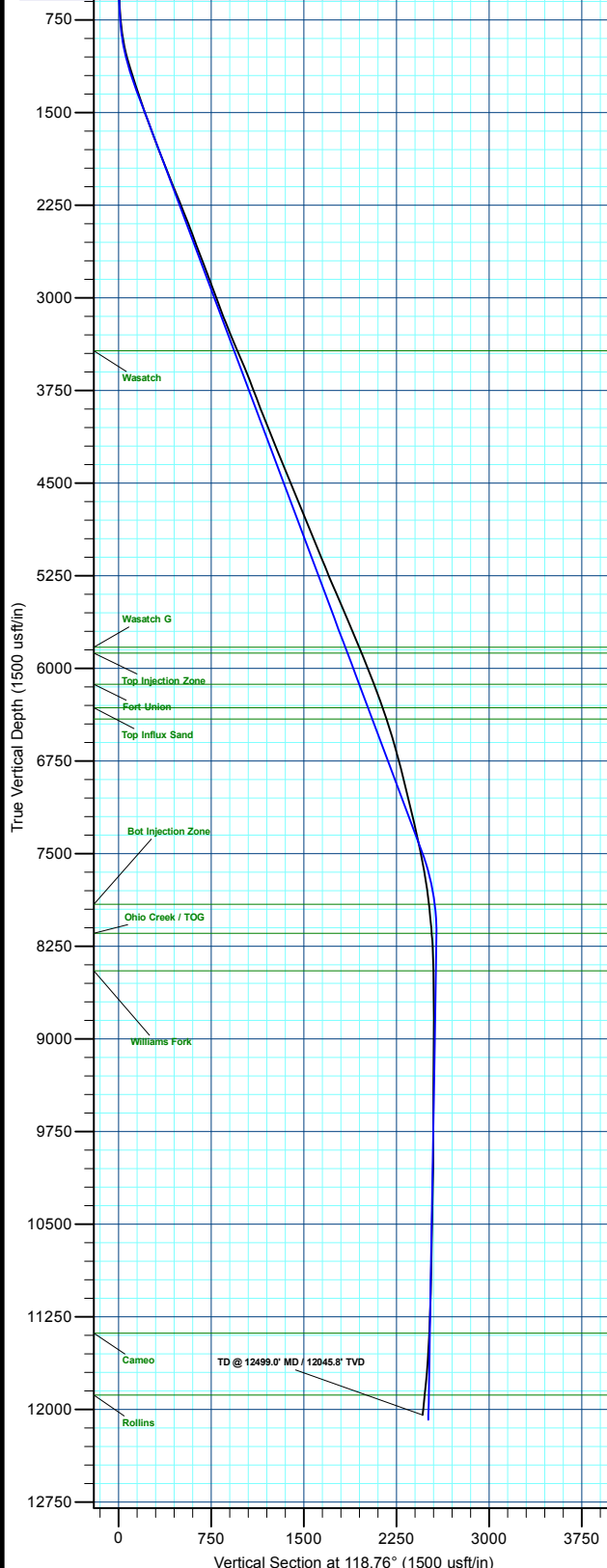
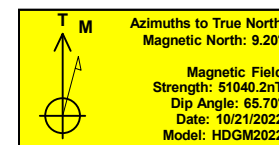
MD	Inc	Azi	TVD	+N/-S	+E/-W	Dieg	TFace	Vsect	Annotation
120.0	0.24	315.25	120.0	0.1	-0.3	0.00	0.00	-0.3	Conductor Tie in
158.5	1.00	80.00	158.5	0.2	0.0	3.00	134.59	-0.1	EOB @ 1.00° Inc. / 80.00° Azm
600.0	1.00	80.00	599.9	1.6	7.5	0.00	0.00	5.9	Build 3° / 100'
733.3	5.00	80.00	733.1	2.8	14.4	3.00	0.00	11.3	EOB @ 5.00° Inc. / 80.00° Azm / Build 3° / 100'
1295.4	20.55	117.63	1280.1	-39.0	126.8	3.00	47.65	129.9	EOB @ 20.55° Inc. / 117.63° Azm
7912.0	20.55	117.63	7475.4	-1116.4	2185.0	0.00	0.00	2452.6	Drop 3° / 100'
8597.1	0.00	0.00	8146.0	-1172.8	2292.7	3.00	180.00	2574.1	EOD @ Vertical / Build 1.5° / 100'
8695.3	1.47	250.00	8244.2	-1173.2	2291.5	1.50	250.00	2573.3	EOB @ 1.47° Inc. / 250.00° Azm
12537.4	1.47	250.00	12085.0	-1207.0	2198.7	0.00	0.00	2508.2	TD @ 12537.4' MD / 12085.0' TVD

DESIGN TARGET DETAILS

Name	TVD	+N/-S	+E/-W	Northing	Easting	Latitude	Longitude
23A-26 - OHCR	8146.0	-1172.8	2292.7	14420314.29	2448165.13	39.674140	-108.129607
23A-26 - PBHL	12085.0	-1207.0	2198.7	14420277.10	2448072.30	39.674046	-108.129941

WELL DETAILS: BJU B26 FED 23A-26 496

+N/-S	+E/-W	Ground Level : 8211.0	Northing	Easting	Latitude	Longitude
0.0	0.0		14421413.30	2445836.20	39.677359	-108.137749



Plan: Design #2 (BJU B26 FED 23A-26 496/Wellbore #1)

Created By: Will Jircik

Date: 17:00, October 29 2022



Caerus Oil & Gas

Garfield County, CO

BJU B26 496 Pad

BJU B26 FED 23A-26 496 - Slot 23A-26

Wellbore #1

Design: Wellbore #1

KLX Survey Report

29 October, 2022



Company:	Caerus Oil & Gas	Local Co-ordinate Reference:	Well BJU B26 FED 23A-26 496 - Slot 23A-26
Project:	Garfield County, CO	TVD Reference:	RKB @ 8241.0usft (30')
Site:	BJU B26 496 Pad	MD Reference:	RKB @ 8241.0usft (30')
Well:	BJU B26 FED 23A-26 496	North Reference:	True
Wellbore:	Wellbore #1	Survey Calculation Method:	Minimum Curvature
Design:	Wellbore #1	Database:	EDM 5000.1 Single User Db

Project	Garfield County, CO		
Map System:	Universal Transverse Mercator (US Survey Feet)	System Datum:	Mean Sea Level
Geo Datum:	NAD 1927 - Western US		
Map Zone:	Zone 12N (114 W to 108 W)		

Site		BJU B26 496 Pad							
Site Position:		Northing:	14,421,469.70	usft	Latitude:	39.677515			
From:	Map	Easting:	2,445,821.30	usft	Longitude:	-108.137796			
Position Uncertainty:		0.0	usft	Slot Radius:	13-3/16	"	Grid Convergence:	1.83	°

Well	BJU B26 FED 23A-26 496 - Slot 23A-26					
Well Position	+N/-S	0.0 usft	Northing:	14,421,413.30 usft	Latitude:	39.677359
	+E/-W	0.0 usft	Easting:	2,445,836.20 usft	Longitude:	-108.137749
Position Uncertainty		0.0 usft	Wellhead Elevation:	usft	Ground Level:	8,211.0 usft

Wellbore	Wellbore #1				
Magnetics	Model Name	Sample Date	Declination (°)	Dip Angle (°)	Field Strength (nT)
	HDGM2022	10/21/2022	9.20	65.70	51,040.20000000

Design	Wellbore #1				
Audit Notes:					
Version:	1.0	Phase:	ACTUAL	Tie On Depth:	0.0
Vertical Section:	Depth From (TVD) (usft)	+N/-S (usft)	+E/-W (usft)	Direction (°)	
	0.0	0.0	0.0	118.76	

Survey Program	Date	10/29/2022			
From (usft)	To (usft)	Survey (Wellbore)	Tool Name	Description	
30.0	120.0	Sfc Gyro (Wellbore #1)	GYRO-NS	OWSG Gyrocompass Gyro	
327.0	12,499.0	KLX MWD (Wellbore #1)	MWD	OWSG MWD - Standard	

Survey										
Measured Depth (usft)	Inclination (°)	Azimuth (°)	Vertical Depth (usft)	+N/-S (usft)	+E/-W (usft)	Vertical Section (usft)	Dogleg Rate (°/100usft)	Build Rate (°/100usft)	Turn Rate (°/100usft)	
0.0	0.00	0.00	0.0	0.0	0.0	0.0	0.00	0.00	0.00	
30.0	0.00	0.00	30.0	0.0	0.0	0.0	0.00	0.00	0.00	
60.0	0.27	282.65	60.0	0.0	-0.1	-0.1	0.90	0.90	0.00	
90.0	0.26	284.22	90.0	0.0	-0.2	-0.2	0.04	-0.03	5.23	
Tie In @ 120.0'MD / 120.0' TVD										
120.0	0.24	315.25	120.0	0.1	-0.3	-0.3	0.45	-0.07	103.43	
327.0	1.60	62.50	327.0	1.8	1.9	0.9	0.81	0.66	51.81	
414.0	2.20	67.40	413.9	3.0	4.6	2.6	0.71	0.69	5.63	
507.0	2.80	64.70	506.8	4.6	8.3	5.0	0.66	0.65	-2.90	
602.0	3.60	65.50	601.7	6.8	13.1	8.2	0.84	0.84	0.84	

Company:	Caerus Oil & Gas	Local Co-ordinate Reference:	Well BJU B26 FED 23A-26 496 - Slot 23A-26
Project:	Garfield County, CO	TVD Reference:	RKB @ 8241.0usft (30')
Site:	BJU B26 496 Pad	MD Reference:	RKB @ 8241.0usft (30')
Well:	BJU B26 FED 23A-26 496	North Reference:	True
Wellbore:	Wellbore #1	Survey Calculation Method:	Minimum Curvature
Design:	Wellbore #1	Database:	EDM 5000.1 Single User Db

Survey									
Measured Depth (usft)	Inclination (°)	Azimuth (°)	Vertical Depth (usft)	+N/-S (usft)	+E/-W (usft)	Vertical Section (usft)	Dogleg Rate (°/100usft)	Build Rate (°/100usft)	Turn Rate (°/100usft)
697.0	4.00	88.70	696.5	8.2	19.1	12.8	1.66	0.42	24.42
791.0	6.10	105.70	790.1	6.9	27.2	20.5	2.72	2.23	18.09
886.0	8.80	108.30	884.3	3.2	39.0	32.6	2.86	2.84	2.74
980.0	12.30	107.60	976.7	-2.1	55.3	49.5	3.73	3.72	-0.74
1,075.0	15.60	106.00	1,068.9	-8.6	77.3	71.9	3.50	3.47	-1.68
1,169.0	17.30	111.90	1,159.0	-17.3	102.4	98.1	2.53	1.81	6.28
1,264.0	18.50	115.60	1,249.4	-29.1	129.1	127.2	1.74	1.26	3.89
1,358.0	19.50	114.90	1,338.3	-42.2	156.8	157.7	1.09	1.06	-0.74
1,453.0	19.00	115.80	1,428.0	-55.6	185.1	189.0	0.61	-0.53	0.95
1,548.0	20.00	117.00	1,517.6	-69.7	213.5	220.7	1.13	1.05	1.26
1,642.0	19.90	116.90	1,605.9	-84.2	242.1	252.7	0.11	-0.11	-0.11
1,737.0	20.40	118.60	1,695.1	-99.5	271.0	285.4	0.81	0.53	1.79
1,832.0	20.60	118.70	1,784.1	-115.4	300.2	318.7	0.21	0.21	0.11
1,926.0	21.40	119.70	1,871.8	-131.9	329.6	352.4	0.93	0.85	1.06
2,021.0	21.30	120.40	1,960.3	-149.2	359.5	387.0	0.29	-0.11	0.74
2,115.0	22.30	120.90	2,047.6	-167.0	389.6	421.9	1.08	1.06	0.53
2,210.0	22.20	122.70	2,135.5	-185.9	420.1	457.8	0.73	-0.11	1.89
2,304.0	22.20	123.50	2,222.6	-205.3	449.9	493.2	0.32	0.00	0.85
2,398.0	22.00	121.30	2,309.7	-224.3	479.7	528.5	0.91	-0.21	-2.34
2,493.0	21.50	118.50	2,397.9	-241.8	510.3	563.7	1.21	-0.53	-2.95
2,587.0	20.00	117.60	2,485.8	-257.5	539.6	597.0	1.63	-1.60	-0.96
2,683.0	20.70	117.80	2,575.8	-273.0	569.2	630.3	0.73	0.73	0.21
2,777.0	20.90	117.90	2,663.7	-288.6	598.7	663.7	0.22	0.21	0.11
2,871.0	21.40	119.20	2,751.4	-304.8	628.5	697.6	0.73	0.53	1.38
2,966.0	20.80	120.00	2,840.0	-321.7	658.2	731.8	0.70	-0.63	0.84
3,067.0	19.80	120.10	2,934.7	-339.2	688.6	766.9	0.99	-0.99	0.10
3,162.0	19.90	119.00	3,024.1	-355.2	716.6	799.1	0.41	0.11	-1.16
3,257.0	20.90	119.00	3,113.1	-371.2	745.6	832.2	1.05	1.05	0.00
3,351.0	22.30	117.50	3,200.5	-387.6	776.1	866.8	1.60	1.49	-1.60
3,446.0	22.00	116.70	3,288.5	-403.9	808.0	902.6	0.45	-0.32	-0.84
3,540.0	23.50	115.60	3,375.2	-419.9	840.6	938.9	1.66	1.60	-1.17
3,635.0	23.20	116.00	3,462.4	-436.3	874.5	976.5	0.36	-0.32	0.42
3,730.0	22.80	115.90	3,549.8	-452.5	907.9	1,013.6	0.42	-0.42	-0.11
3,825.0	21.50	115.70	3,637.8	-468.1	940.1	1,049.4	1.37	-1.37	-0.21
3,919.0	21.40	116.50	3,725.3	-483.2	971.0	1,083.7	0.33	-0.11	0.85
4,014.0	20.90	116.60	3,813.9	-498.6	1,001.6	1,118.0	0.53	-0.53	0.11
4,108.0	20.30	118.00	3,901.9	-513.7	1,031.0	1,151.0	0.83	-0.64	1.49
4,205.0	21.80	117.60	3,992.4	-530.0	1,061.9	1,185.9	1.55	1.55	-0.41
4,297.0	22.70	117.50	4,077.6	-546.1	1,092.7	1,220.7	0.98	0.98	-0.11
4,392.0	21.30	117.70	4,165.7	-562.6	1,124.3	1,256.3	1.48	-1.47	0.21
4,486.0	22.60	117.00	4,252.8	-578.7	1,155.5	1,291.4	1.41	1.38	-0.74
4,581.0	22.60	116.80	4,340.6	-595.2	1,188.0	1,327.9	0.08	0.00	-0.21
4,676.0	21.90	115.90	4,428.5	-611.2	1,220.3	1,363.8	0.82	-0.74	-0.95

Company:	Caerus Oil & Gas	Local Co-ordinate Reference:	Well BJU B26 FED 23A-26 496 - Slot 23A-26
Project:	Garfield County, CO	TVD Reference:	RKB @ 8241.0usft (30')
Site:	BJU B26 496 Pad	MD Reference:	RKB @ 8241.0usft (30')
Well:	BJU B26 FED 23A-26 496	North Reference:	True
Wellbore:	Wellbore #1	Survey Calculation Method:	Minimum Curvature
Design:	Wellbore #1	Database:	EDM 5000.1 Single User Db

Survey									
Measured Depth (usft)	Inclination (°)	Azimuth (°)	Vertical Depth (usft)	+N/-S (usft)	+E/-W (usft)	Vertical Section (usft)	Dogleg Rate (°/100usft)	Build Rate (°/100usft)	Turn Rate (°/100usft)
4,770.0	23.00	115.50	4,515.4	-626.8	1,252.6	1,399.7	1.18	1.17	-0.43
4,865.0	22.20	115.40	4,603.1	-642.4	1,285.6	1,436.1	0.84	-0.84	-0.11
4,959.0	22.80	116.30	4,689.9	-658.1	1,318.0	1,472.0	0.74	0.64	0.96
5,054.0	22.10	115.80	4,777.7	-674.1	1,350.6	1,508.3	0.76	-0.74	-0.53
5,149.0	22.20	120.00	4,865.7	-690.8	1,382.2	1,544.1	1.67	0.11	4.42
5,244.0	21.50	119.50	4,953.9	-708.4	1,412.9	1,579.4	0.76	-0.74	-0.53
5,338.0	22.50	118.00	5,041.0	-725.3	1,443.8	1,614.6	1.22	1.06	-1.60
5,433.0	22.90	118.20	5,128.7	-742.6	1,476.1	1,651.3	0.43	0.42	0.21
5,528.0	21.70	119.10	5,216.6	-759.8	1,507.7	1,687.3	1.31	-1.26	0.95
5,623.0	23.00	117.70	5,304.4	-777.0	1,539.5	1,723.5	1.48	1.37	-1.47
5,717.0	23.70	116.40	5,390.7	-793.9	1,572.7	1,760.7	0.92	0.74	-1.38
5,812.0	23.20	117.00	5,477.9	-810.9	1,606.5	1,798.5	0.58	-0.53	0.63
5,906.0	22.70	115.20	5,564.4	-827.1	1,639.4	1,835.1	0.92	-0.53	-1.91
6,001.0	23.30	116.80	5,651.9	-843.3	1,672.7	1,872.2	0.91	0.63	1.68
6,096.0	22.50	116.30	5,739.4	-859.9	1,705.8	1,909.1	0.87	-0.84	-0.53
6,190.0	23.40	116.60	5,826.0	-876.2	1,738.6	1,945.7	0.97	0.96	0.32
6,285.0	22.70	117.60	5,913.4	-893.1	1,771.7	1,982.9	0.84	-0.74	1.05
6,379.0	21.10	117.70	6,000.6	-909.4	1,802.8	2,017.9	1.70	-1.70	0.11
6,474.0	21.40	118.10	6,089.1	-925.5	1,833.2	2,052.4	0.35	0.32	0.42
6,568.0	20.70	118.30	6,176.9	-941.5	1,863.0	2,086.1	0.75	-0.74	0.21
6,663.0	19.10	119.20	6,266.2	-957.0	1,891.3	2,118.5	1.71	-1.68	0.95
6,758.0	19.20	118.50	6,355.9	-972.0	1,918.6	2,149.6	0.26	0.11	-0.74
6,852.0	18.20	118.10	6,445.0	-986.3	1,945.2	2,179.8	1.07	-1.06	-0.43
6,947.0	17.00	118.00	6,535.5	-999.8	1,970.5	2,208.5	1.26	-1.26	-0.11
7,042.0	15.60	119.10	6,626.7	-1,012.6	1,993.9	2,235.2	1.51	-1.47	1.16
7,136.0	15.10	119.90	6,717.3	-1,024.8	2,015.6	2,260.0	0.58	-0.53	0.85
7,231.0	14.70	120.10	6,809.1	-1,037.0	2,036.7	2,284.5	0.42	-0.42	0.21
7,325.0	14.30	119.40	6,900.1	-1,048.7	2,057.2	2,308.0	0.46	-0.43	-0.74
7,420.0	13.80	120.30	6,992.3	-1,060.2	2,077.2	2,331.0	0.57	-0.53	0.95
7,515.0	13.40	119.80	7,084.6	-1,071.4	2,096.5	2,353.4	0.44	-0.42	-0.53
7,609.0	13.10	120.50	7,176.1	-1,082.2	2,115.1	2,374.9	0.36	-0.32	0.74
7,704.0	12.60	121.00	7,268.8	-1,093.0	2,133.3	2,396.0	0.54	-0.53	0.53
7,799.0	12.30	121.50	7,361.5	-1,103.6	2,150.8	2,416.5	0.34	-0.32	0.53
7,893.0	11.80	121.80	7,453.5	-1,113.9	2,167.5	2,436.1	0.54	-0.53	0.32
7,988.0	11.60	123.40	7,546.5	-1,124.3	2,183.7	2,455.3	0.40	-0.21	1.68
8,083.0	10.20	122.80	7,639.8	-1,134.1	2,198.8	2,473.2	1.48	-1.47	-0.63
8,177.0	9.30	121.70	7,732.4	-1,142.6	2,212.2	2,489.1	0.98	-0.96	-1.17
8,272.0	7.50	115.60	7,826.4	-1,149.3	2,224.4	2,503.0	2.11	-1.89	-6.42
8,366.0	6.30	101.40	7,919.7	-1,153.0	2,235.0	2,514.0	2.21	-1.28	-15.11
8,461.0	5.50	99.90	8,014.2	-1,154.8	2,244.6	2,523.3	0.86	-0.84	-1.58
8,556.0	5.40	103.00	8,108.8	-1,156.6	2,253.4	2,531.9	0.33	-0.11	3.26
8,650.0	4.10	111.00	8,202.5	-1,158.8	2,260.8	2,539.5	1.55	-1.38	8.51
8,745.0	2.50	124.20	8,297.3	-1,161.2	2,265.7	2,544.9	1.85	-1.68	13.89

Company:	Caerus Oil & Gas	Local Co-ordinate Reference:	Well BJU B26 FED 23A-26 496 - Slot 23A-26
Project:	Garfield County, CO	TVD Reference:	RKB @ 8241.0usft (30')
Site:	BJU B26 496 Pad	MD Reference:	RKB @ 8241.0usft (30')
Well:	BJU B26 FED 23A-26 496	North Reference:	True
Wellbore:	Wellbore #1	Survey Calculation Method:	Minimum Curvature
Design:	Wellbore #1	Database:	EDM 5000.1 Single User Db

Survey										
Measured Depth (usft)	Inclination (°)	Azimuth (°)	Vertical Depth (usft)	+N/-S (usft)	+E/-W (usft)	Vertical Section (usft)	Dogleg Rate (°/100usft)	Build Rate (°/100usft)	Turn Rate (°/100usft)	
8,840.0	1.30	103.80	8,392.2	-1,162.6	2,268.5	2,548.0	1.43	-1.26	-21.47	
8,934.0	1.10	90.80	8,486.2	-1,162.9	2,270.4	2,549.9	0.36	-0.21	-13.83	
9,029.0	1.20	86.10	8,581.2	-1,162.8	2,272.3	2,551.5	0.14	0.11	-4.95	
9,124.0	0.70	70.20	8,676.2	-1,162.5	2,273.9	2,552.7	0.59	-0.53	-16.74	
9,218.0	0.40	2.50	8,770.2	-1,162.0	2,274.4	2,553.0	0.70	-0.32	-72.02	
9,313.0	0.30	307.10	8,865.2	-1,161.5	2,274.2	2,552.6	0.35	-0.11	-58.32	
9,408.0	0.40	258.80	8,960.2	-1,161.5	2,273.7	2,552.1	0.32	0.11	-50.84	
9,502.0	0.90	238.90	9,054.2	-1,161.9	2,272.8	2,551.4	0.58	0.53	-21.17	
9,597.0	1.10	224.40	9,149.2	-1,162.9	2,271.5	2,550.8	0.34	0.21	-15.26	
9,691.0	1.50	210.80	9,243.1	-1,164.6	2,270.2	2,550.5	0.53	0.43	-14.47	
9,786.0	1.20	210.80	9,338.1	-1,166.6	2,269.1	2,550.5	0.32	-0.32	0.00	
9,880.0	1.30	220.80	9,432.1	-1,168.2	2,267.9	2,550.2	0.25	0.11	10.64	
9,975.0	1.90	222.80	9,527.0	-1,170.2	2,266.1	2,549.6	0.63	0.63	2.11	
10,070.0	1.50	226.30	9,622.0	-1,172.2	2,264.1	2,548.8	0.43	-0.42	3.68	
10,164.0	1.00	227.80	9,716.0	-1,173.6	2,262.6	2,548.2	0.53	-0.53	1.60	
10,259.0	0.80	232.10	9,811.0	-1,174.6	2,261.5	2,547.7	0.22	-0.21	4.53	
10,353.0	1.10	227.90	9,905.0	-1,175.6	2,260.3	2,547.1	0.33	0.32	-4.47	
10,448.0	1.20	211.40	9,999.9	-1,177.0	2,259.1	2,546.8	0.36	0.11	-17.37	
10,543.0	1.40	220.40	10,094.9	-1,178.8	2,257.8	2,546.5	0.30	0.21	9.47	
10,637.0	1.70	243.80	10,188.9	-1,180.3	2,255.9	2,545.4	0.74	0.32	24.89	
10,732.0	2.50	243.10	10,283.8	-1,181.8	2,252.7	2,543.5	0.84	0.84	-0.74	
10,827.0	3.00	239.60	10,378.7	-1,184.0	2,248.7	2,541.0	0.55	0.53	-3.68	
10,921.0	2.50	234.60	10,472.6	-1,186.4	2,245.0	2,538.9	0.59	-0.53	-5.32	
11,016.0	2.10	238.20	10,567.5	-1,188.6	2,241.8	2,537.1	0.45	-0.42	3.79	
11,110.0	2.30	237.90	10,661.5	-1,190.5	2,238.7	2,535.3	0.21	0.21	-0.32	
11,205.0	1.70	238.80	10,756.4	-1,192.2	2,235.9	2,533.7	0.63	-0.63	0.95	
11,299.0	2.30	235.20	10,850.3	-1,194.0	2,233.2	2,532.2	0.65	0.64	-3.83	
11,394.0	2.70	240.00	10,945.2	-1,196.2	2,229.7	2,530.2	0.47	0.42	5.05	
11,488.0	3.40	238.80	11,039.1	-1,198.8	2,225.4	2,527.6	0.75	0.74	-1.28	
11,583.0	3.60	238.20	11,133.9	-1,201.8	2,220.4	2,524.7	0.21	0.21	-0.63	
11,678.0	3.50	240.10	11,228.8	-1,204.8	2,215.4	2,521.8	0.16	-0.11	2.00	
11,772.0	3.60	244.90	11,322.6	-1,207.5	2,210.2	2,518.5	0.33	0.11	5.11	
11,867.0	4.20	246.10	11,417.4	-1,210.2	2,204.3	2,514.7	0.64	0.63	1.26	
11,962.0	4.90	248.50	11,512.1	-1,213.1	2,197.4	2,510.0	0.76	0.74	2.53	
12,056.0	5.50	255.40	11,605.7	-1,215.7	2,189.3	2,504.1	0.92	0.64	7.34	
12,151.0	6.40	259.10	11,700.2	-1,217.8	2,179.7	2,496.7	1.03	0.95	3.89	
12,245.0	6.90	269.90	11,793.5	-1,218.8	2,168.9	2,487.8	1.43	0.53	11.49	
12,340.0	6.40	268.80	11,887.9	-1,219.0	2,157.9	2,478.2	0.54	-0.53	-1.16	
12,434.0	6.70	269.20	11,981.3	-1,219.1	2,147.2	2,468.9	0.32	0.32	0.43	
TD @ 12499.0' MD / 12045.8' TVD										
12,499.0	6.70	269.20	12,045.8	-1,219.2	2,139.6	2,462.3	0.00	0.00	0.00	

Company:	Caerus Oil & Gas	Local Co-ordinate Reference:	Well BJU B26 FED 23A-26 496 - Slot 23A-26
Project:	Garfield County, CO	TVD Reference:	RKB @ 8241.0usft (30')
Site:	BJU B26 496 Pad	MD Reference:	RKB @ 8241.0usft (30')
Well:	BJU B26 FED 23A-26 496	North Reference:	True
Wellbore:	Wellbore #1	Survey Calculation Method:	Minimum Curvature
Design:	Wellbore #1	Database:	EDM 5000.1 Single User Db

Design Annotations				
Measured Depth (usft)	Vertical Depth (usft)	Local Coordinates		Comment
		+N/-S (usft)	+E/-W (usft)	
120.0	120.0	0.1	-0.3	Tie In @ 120.0'MD / 120.0' TVD
12,499.0	12,045.8	-1,219.2	2,139.6	TD @ 12499.0' MD / 12045.8' TVD