



# Compensated Neutron Gamma Ray Casing Collar Log

Company		Caerus Piceance LLC.		Company		Caerus Piceance LLC.	
Well		BJU B26 Fed 12D-26-496		Well		BJU B26 Fed 12D-26-496	
Field		Grand Valley		Field		Grand Valley	
County		Garfield		County		Garfield	
State		Colorado		State		Colorado	
Date		22-DEC-2022		Country		USA	
Run Number		One		Location:		API # : 05-045-24456	
Depth Driller		11998 FT		Permanent Datum		Ground Level	
Depth Logger		11852 FT		Log Measured From		Kelly Bushing	
Bottom Logged Interval		11850 FT		Drilling Measured From		Kelly Bushing	
Top Log Interval		7500 FT		Elevation		8211'	
Open Hole Size		8.750"		Other Services		RCBL	
Type Fluid		Fresh Water		Elevation		K.B. 8241'	
Density / Viscosity		8.34 lb/gal		Elevation		D.F. 8240'	
Max. Recorded Temp.		---		Elevation		G.L. 8211'	
Estimated Cement Top		---		Elevation		G.L. 8211'	
Time Well Ready		ROA		Elevation		G.L. 8211'	
Time Logger on Bottom		13:00		Elevation		G.L. 8211'	
Equipment Number		8045		Elevation		G.L. 8211'	
Location		Grand Junction Colo		Elevation		G.L. 8211'	
Recorded By		P. Edwards		Elevation		G.L. 8211'	
Witnessed By		Z. Fisher		Elevation		G.L. 8211'	
Run Number		8.75"		Borehole Record		Tubing Record	
Bit		From		To		Size	
8.75"		Surface		11998 FT		Weight	
						From	
						To	
Casing Record		Size		Wgt/Ft		Top	
Surface String		9.625"		36		Surface	
Prot. String		4.5"		11.6		Surface	
Production String							
Liner							

<<< Fold Here >>>

All interpretations are opinions based on inferences from electrical or other measurements and we cannot and do not guarantee the accuracy or correctness of any interpretation, and we shall not, except in the case of gross or willful negligence on our part, be liable or responsible for any loss, costs, damages, or expenses incurred or sustained by anyone resulting from any interpretation made by any of our officers, agents or employees. These interpretations are also subject to our general terms and conditions set out in our current Price Schedule.

### Comments

Log ran as per customer request.  
Depth referenced to Kelly Bushing @ 30FT  
Marker Joint from 7958 FT - 7968 FT  
Log ran from 11852 FT to 7500 FT  
Log ran with 0 PSI surface induced pressure.

Thank you for choosing The Wireline Group!!!



Main Pass 5" = 100'

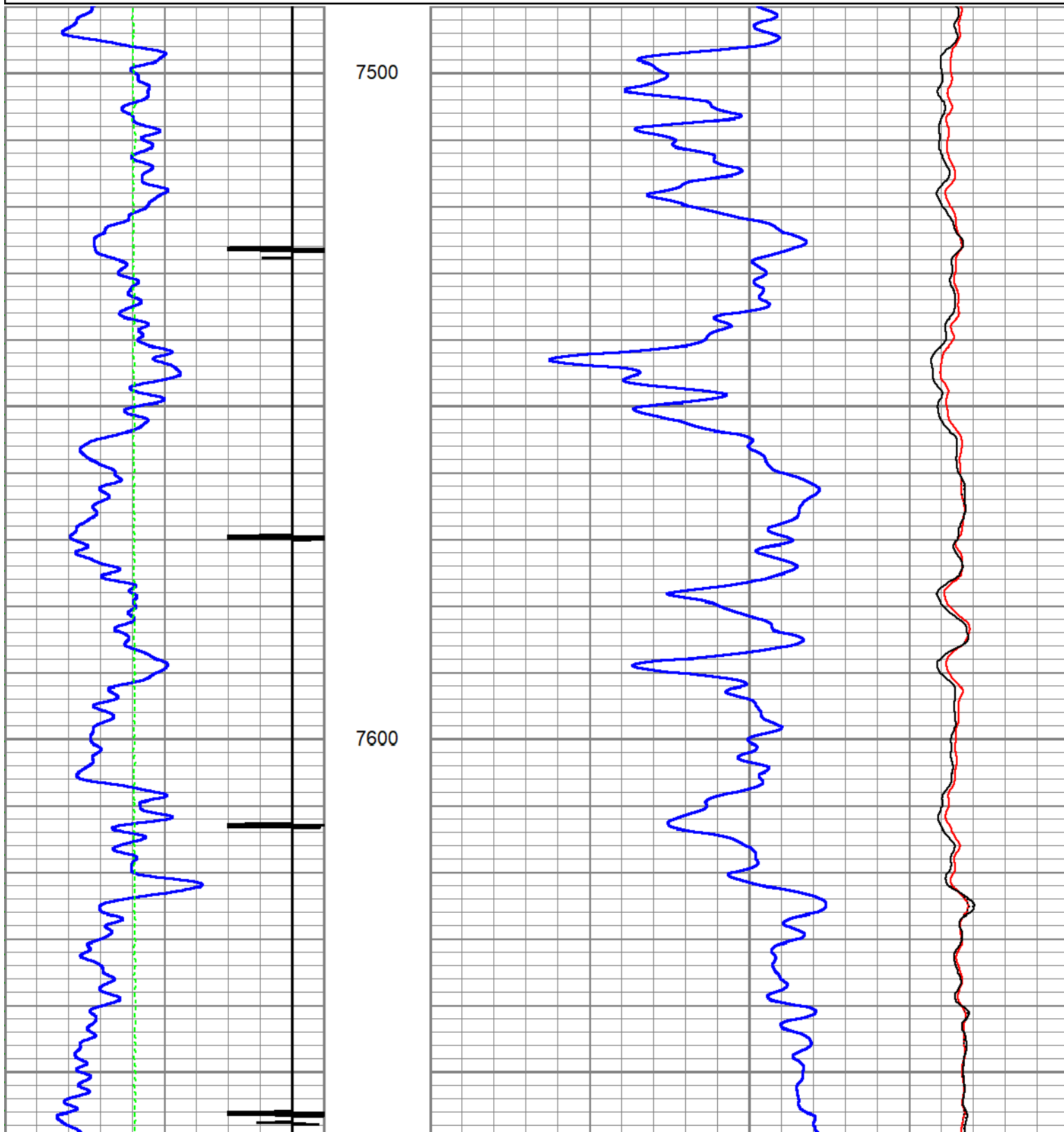
Database File caerus\_bju b26 fed 12d-26-496\_rcbl-cn1\_12-22-2022.db  
Dataset Pathname main  
Presentation Format twgcnl  
Dataset Creation Thu Dec 22 13:00:57 2022  
Charted by Depth in Feet scaled 1:240

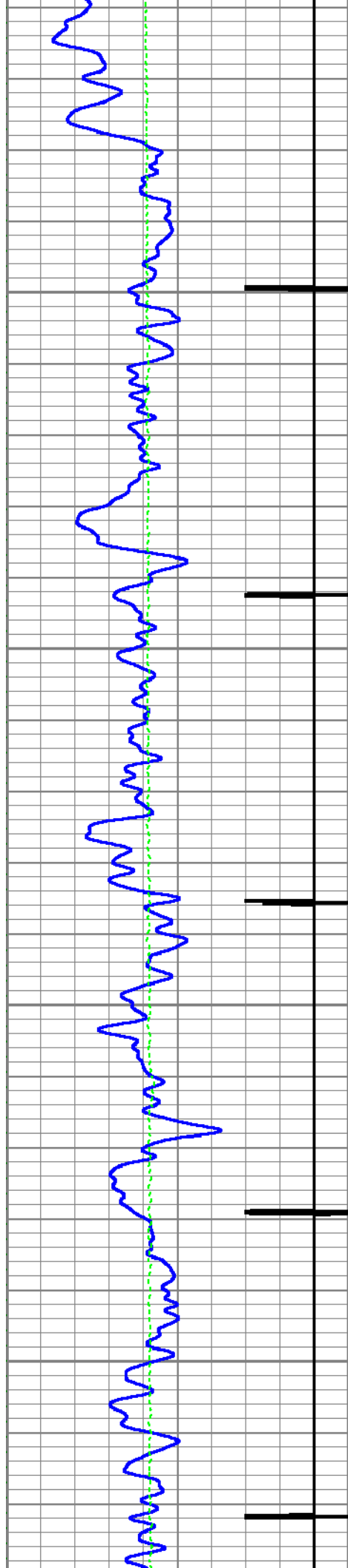
0	GR (GAPI)	200
-9	CCL	1
0	Line Tension (lb)	4000

0.3 CNPOR (pu) -0.1

CNLSC  
0 (cps) 1500

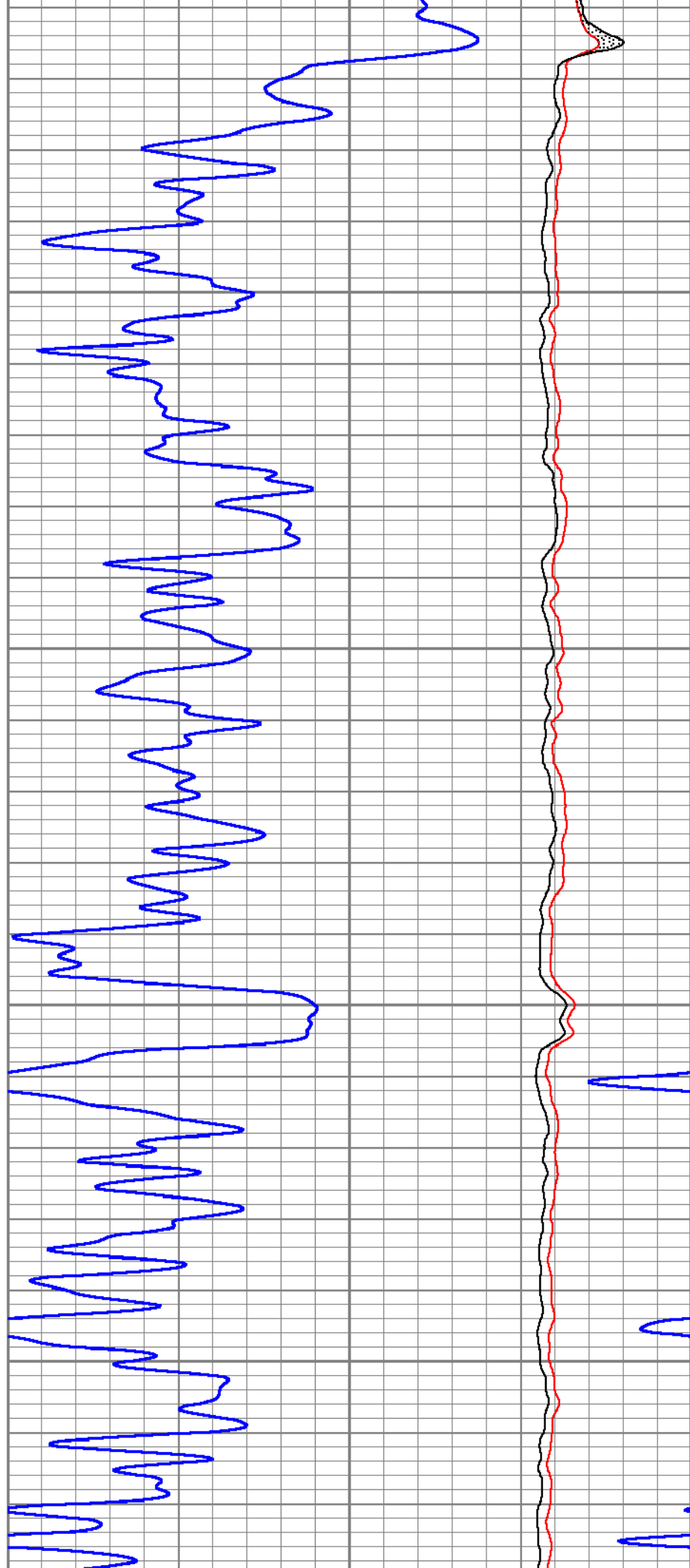
CNSSC  
0 (cps) 7000

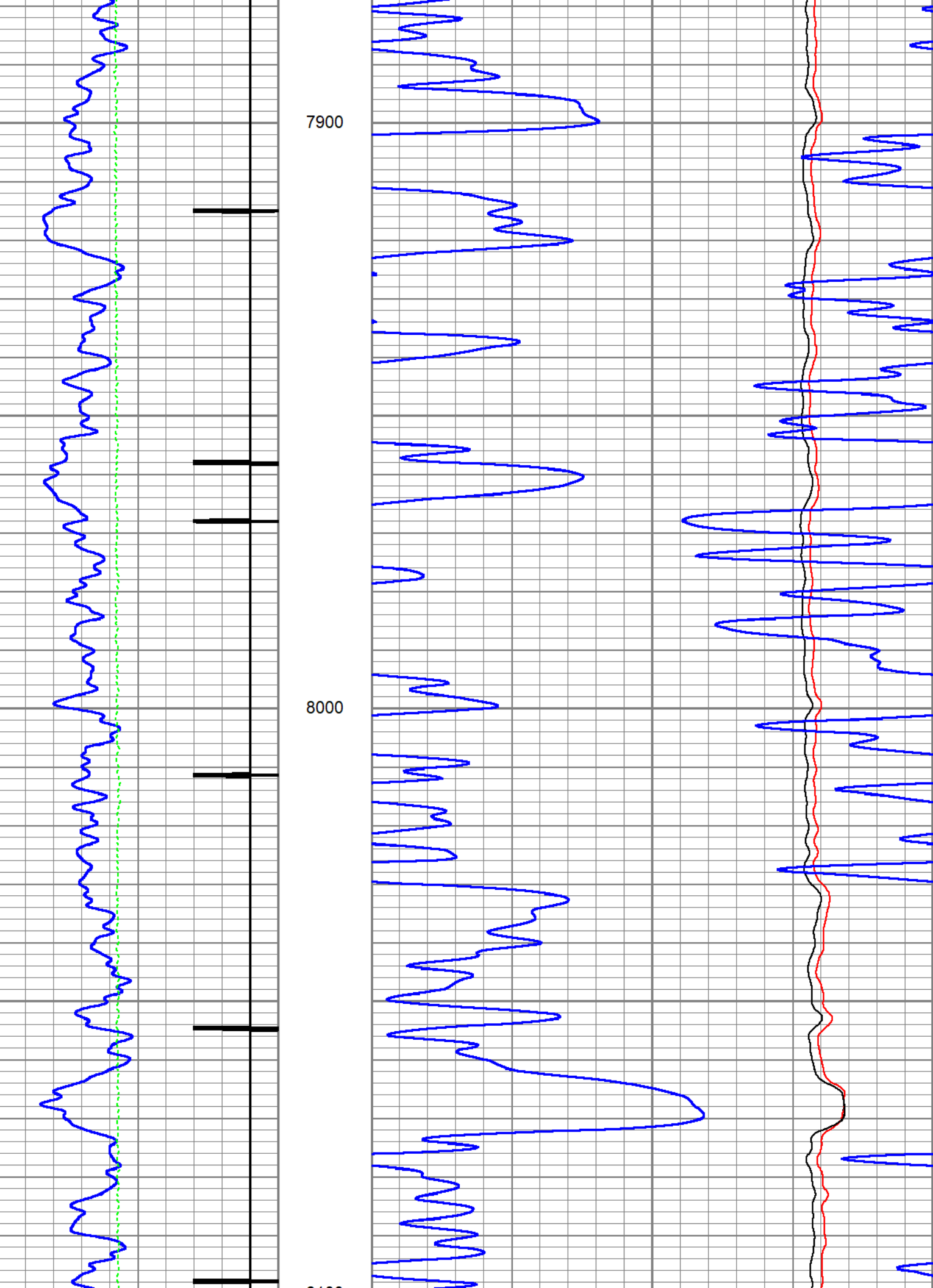




7700

7800

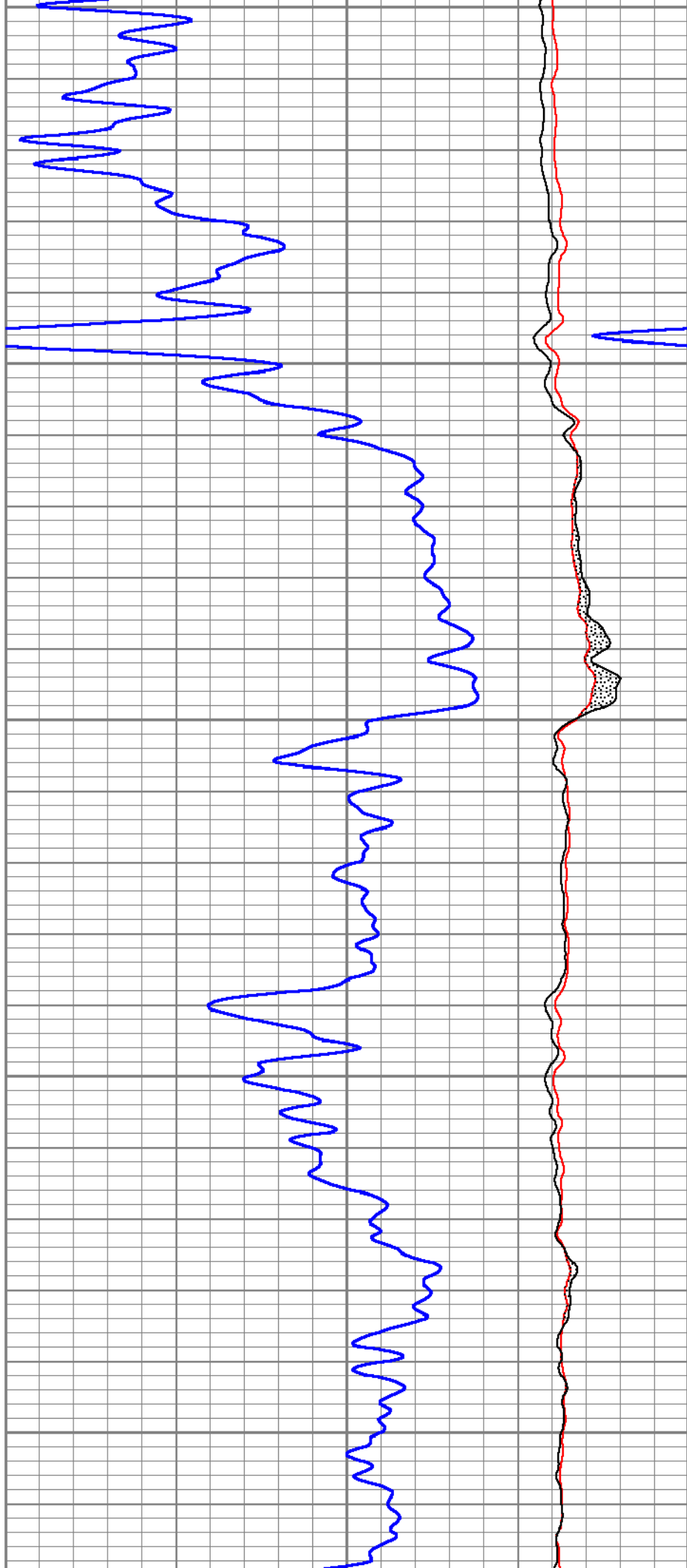
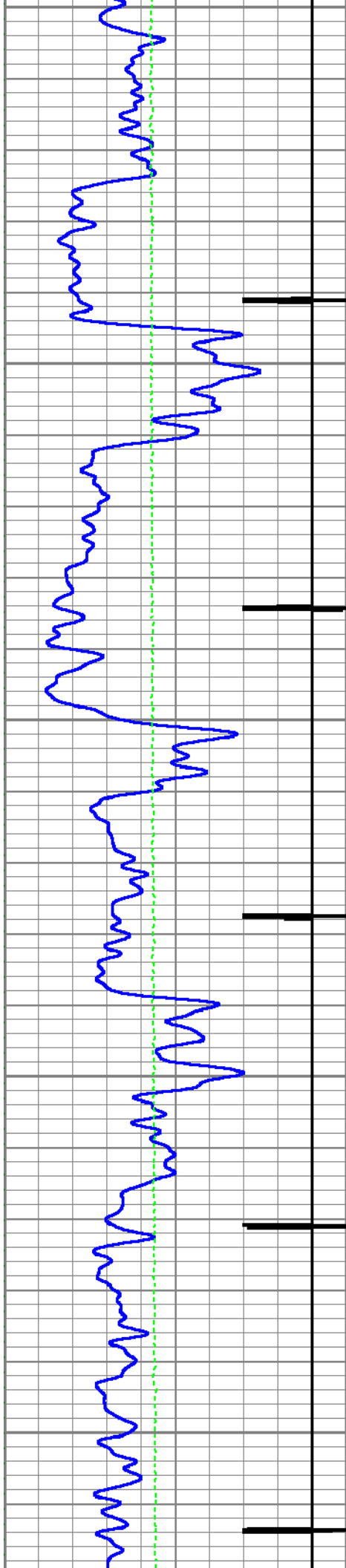


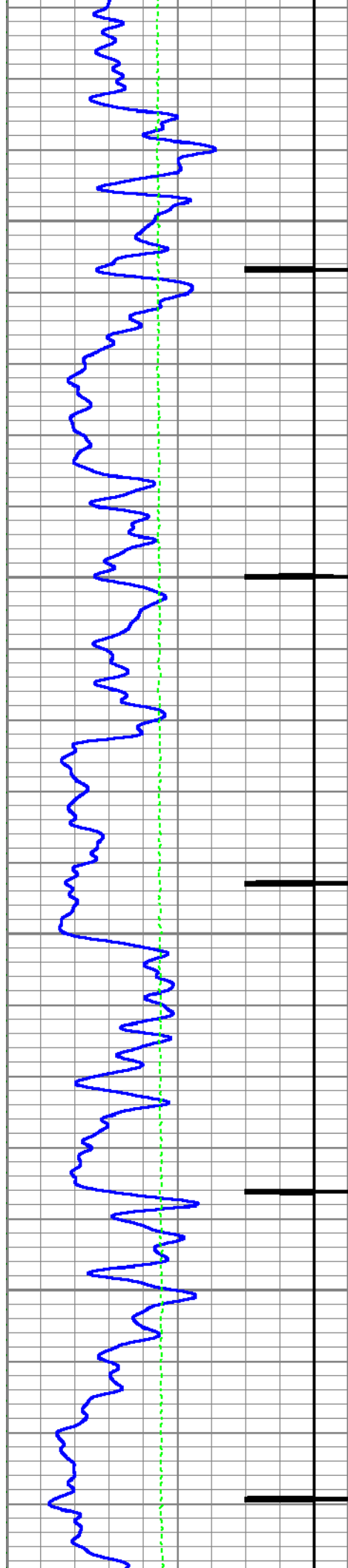


8100

8200

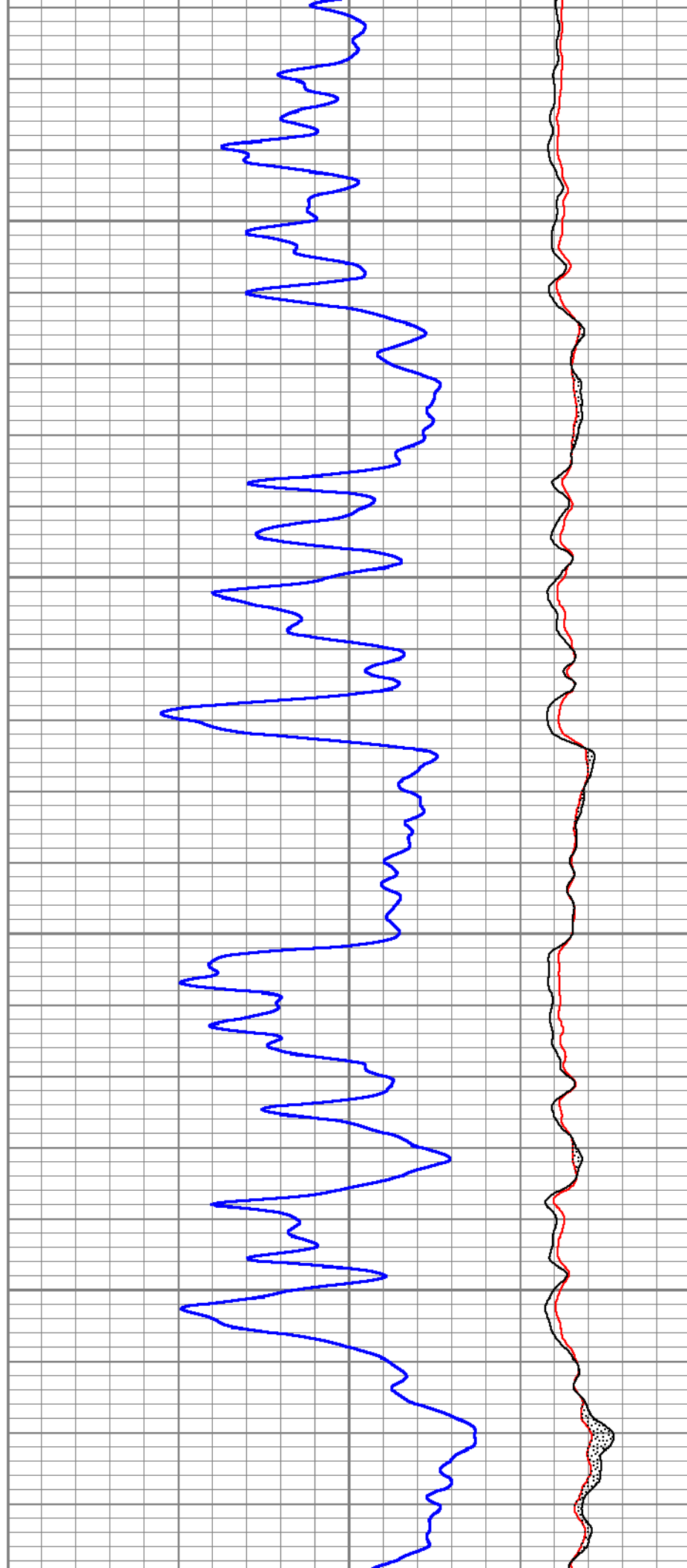
8300

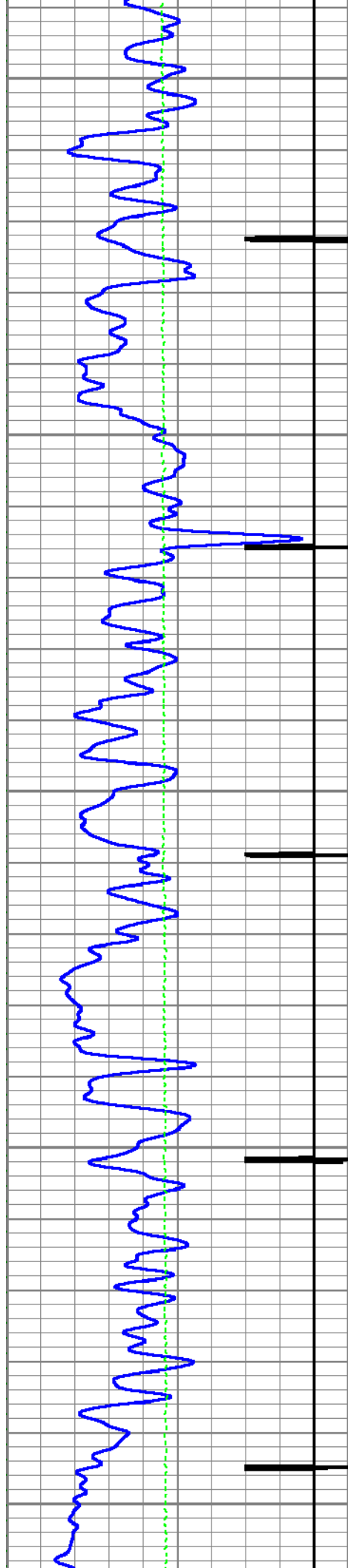




8400

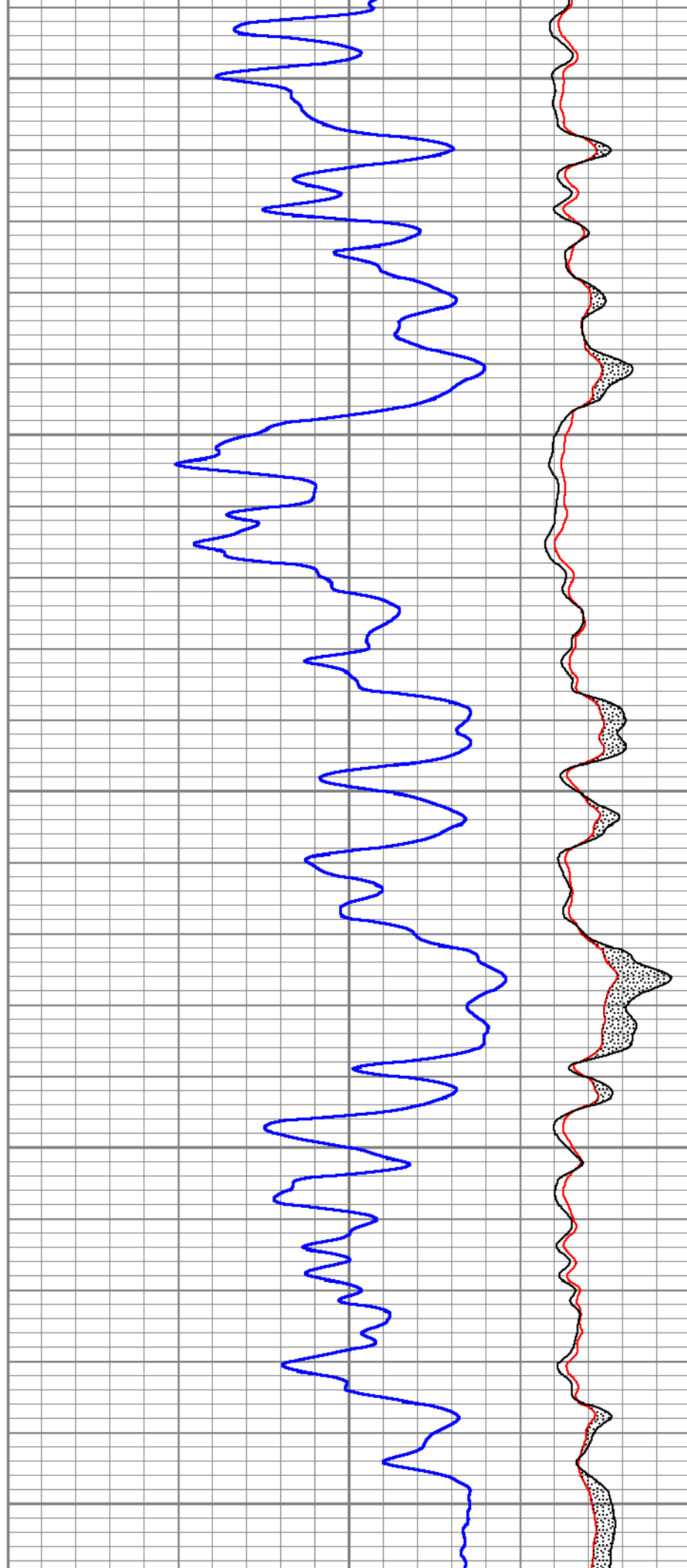
8500

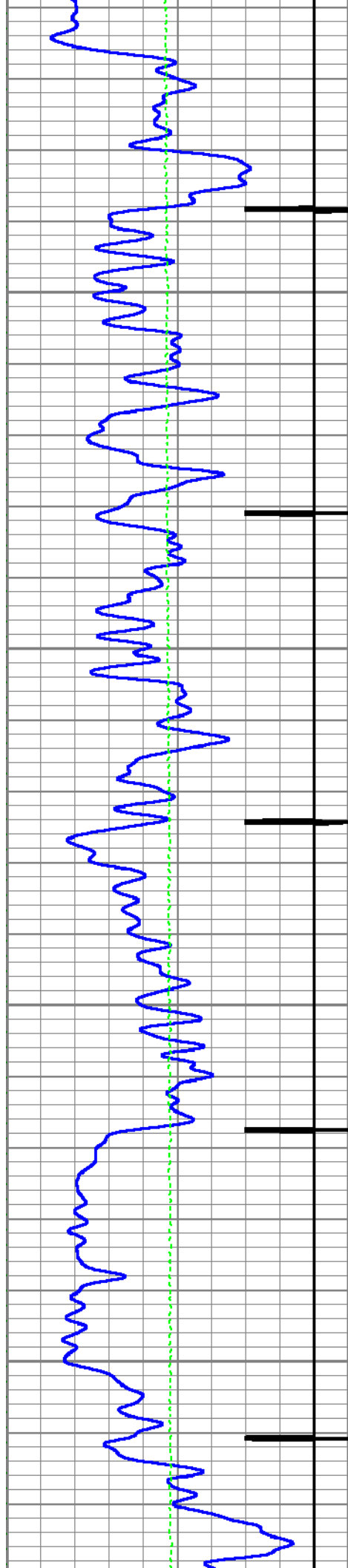




8600

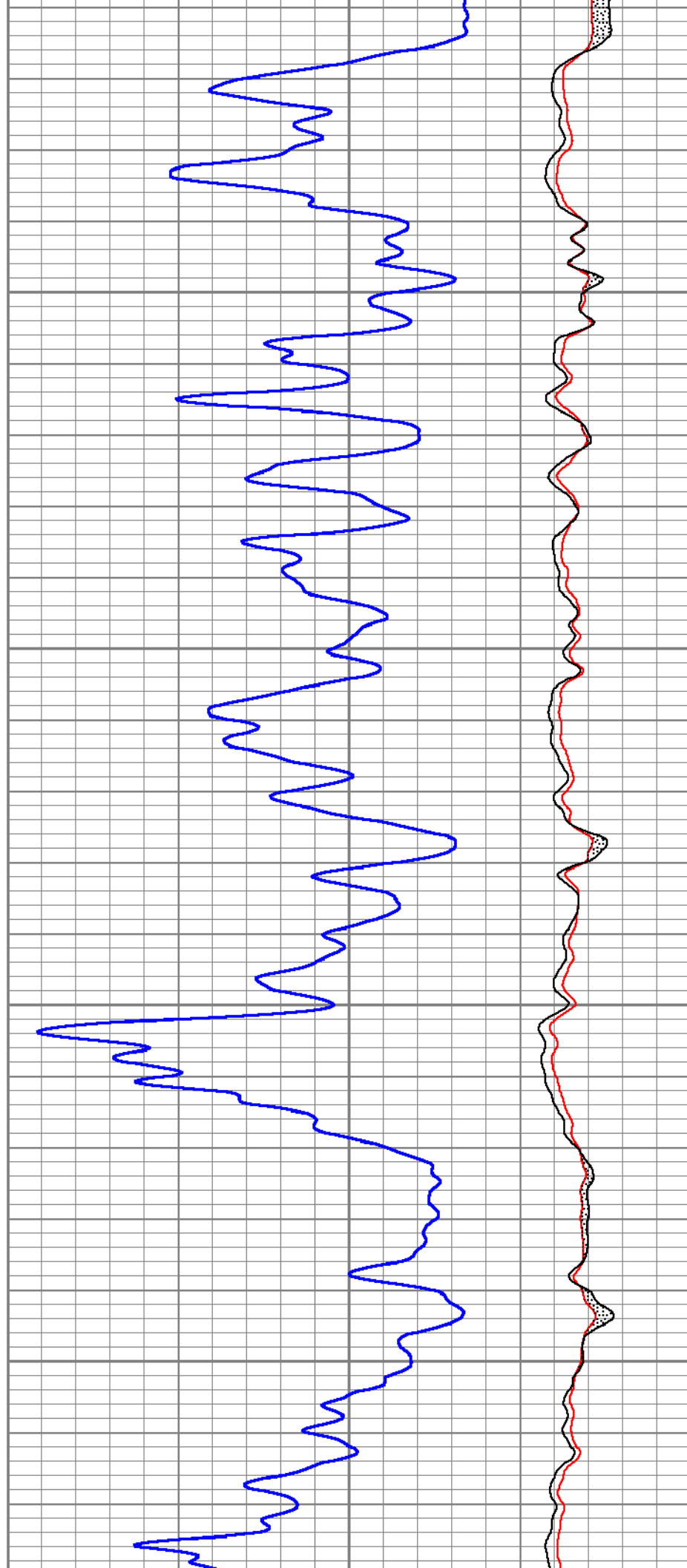
8700



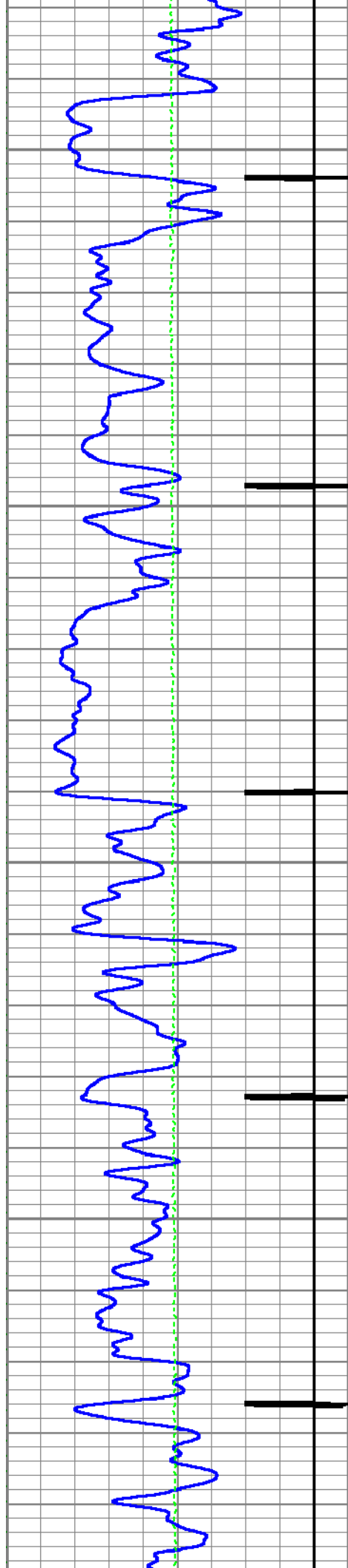


8800

8900





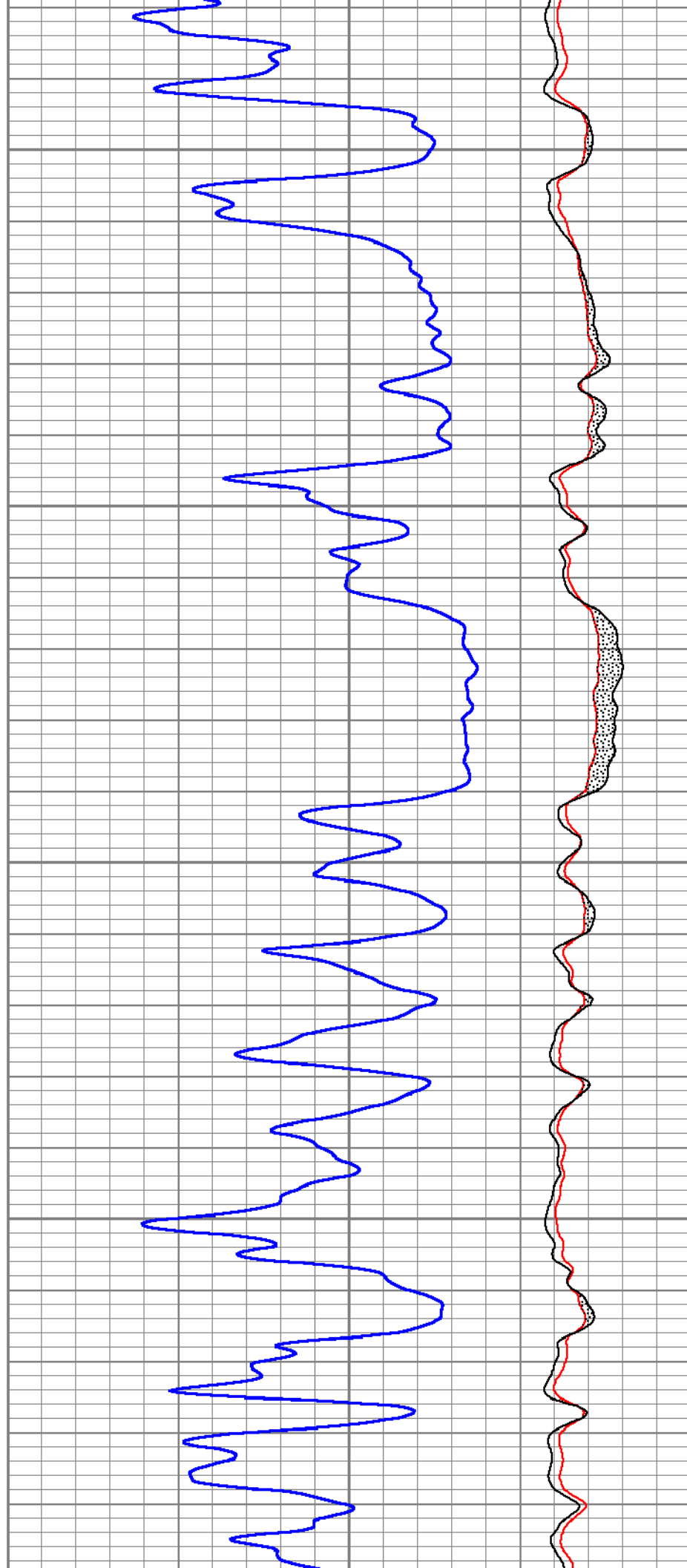


9000

9100

9200

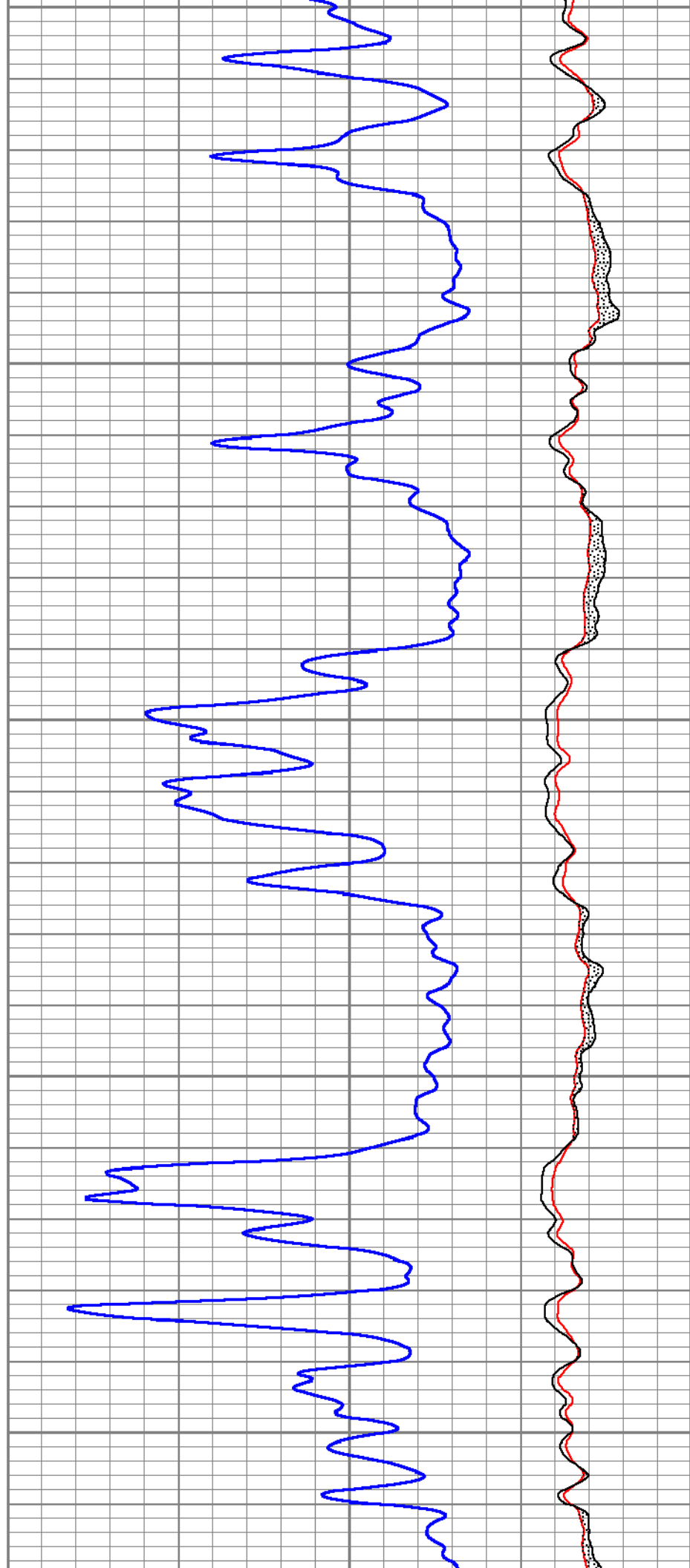
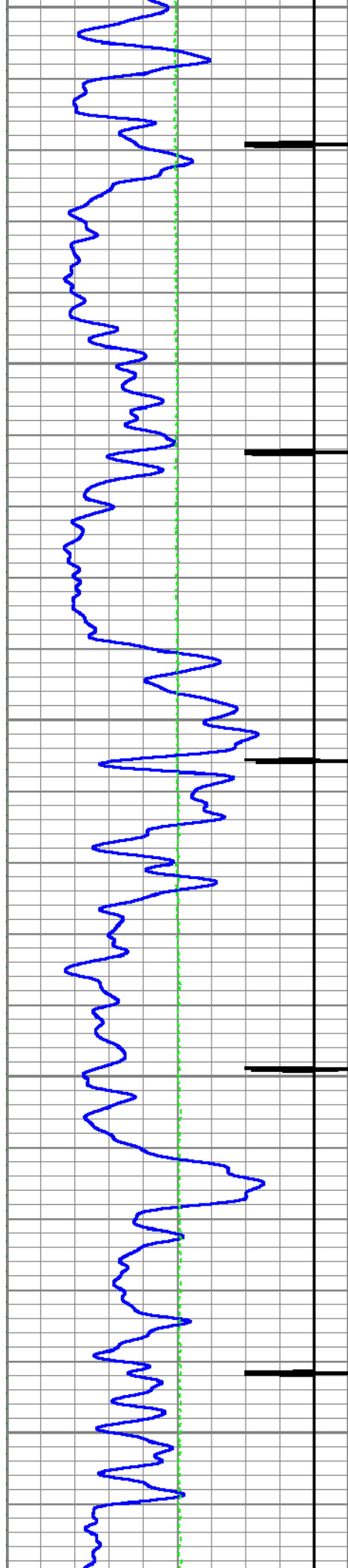
9300

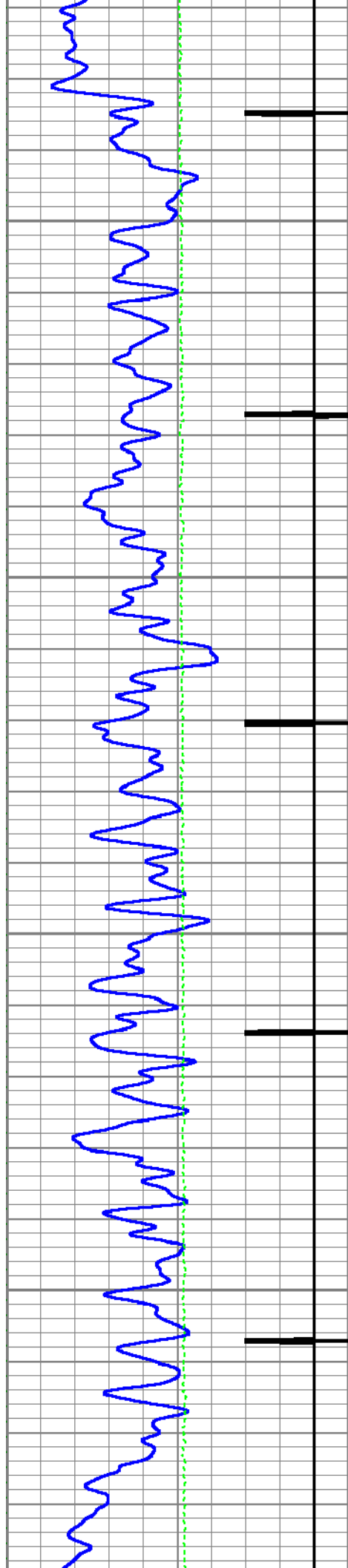


9200

9300

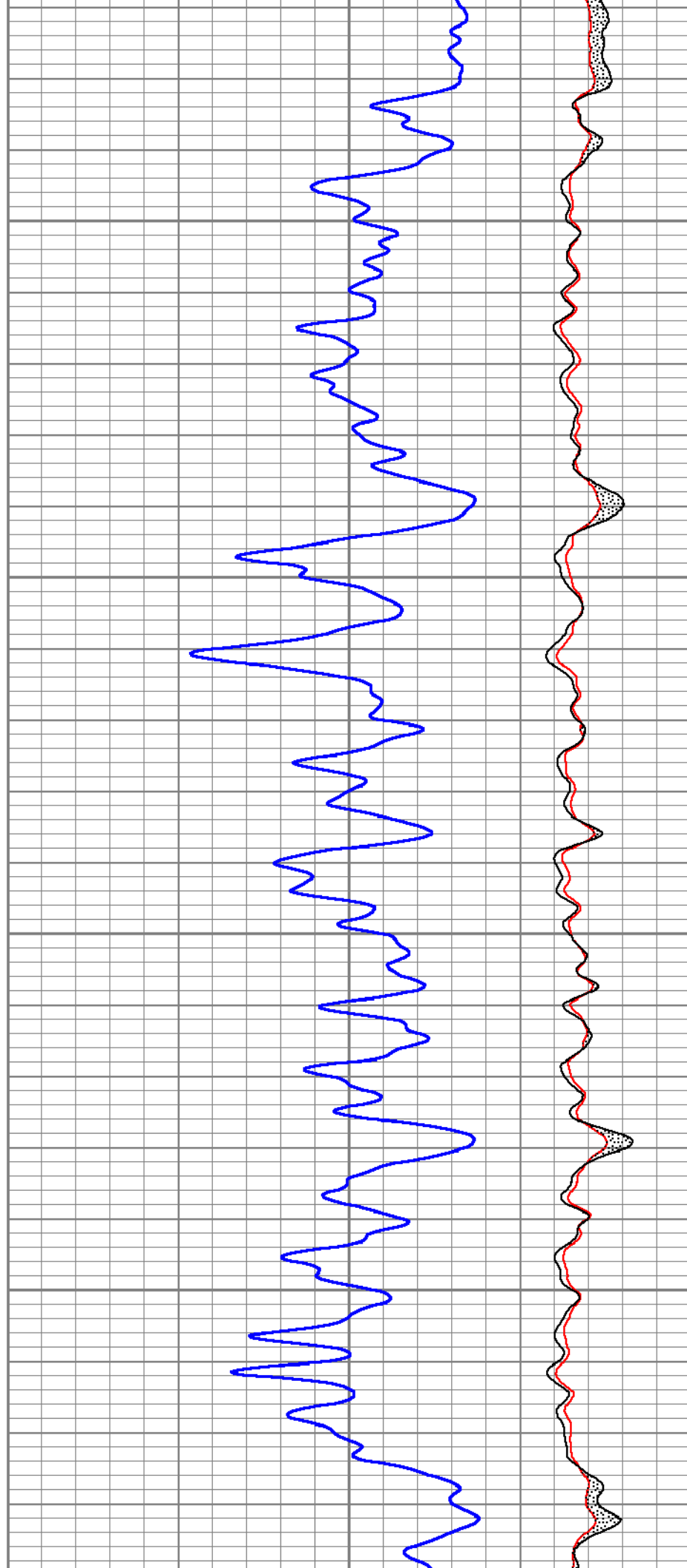
9400

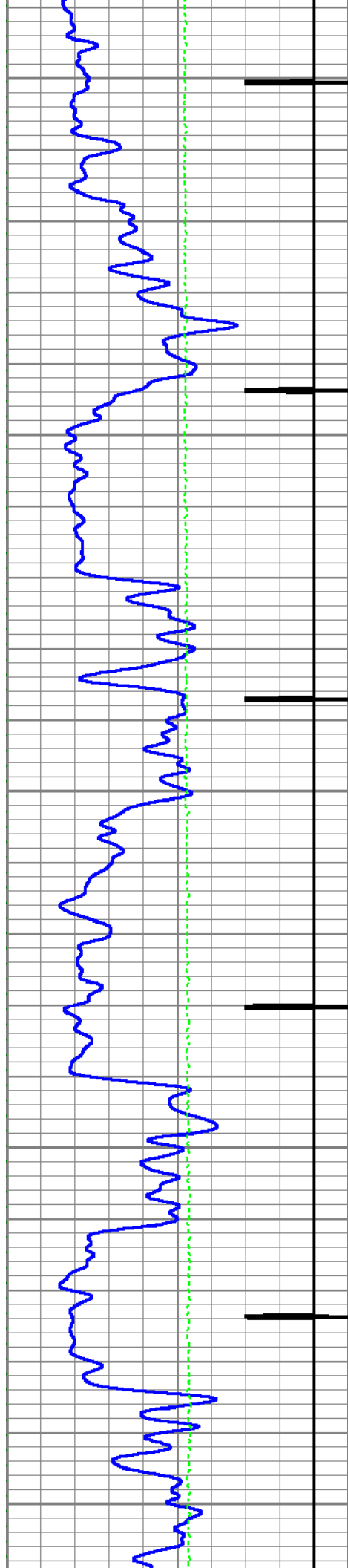




9500

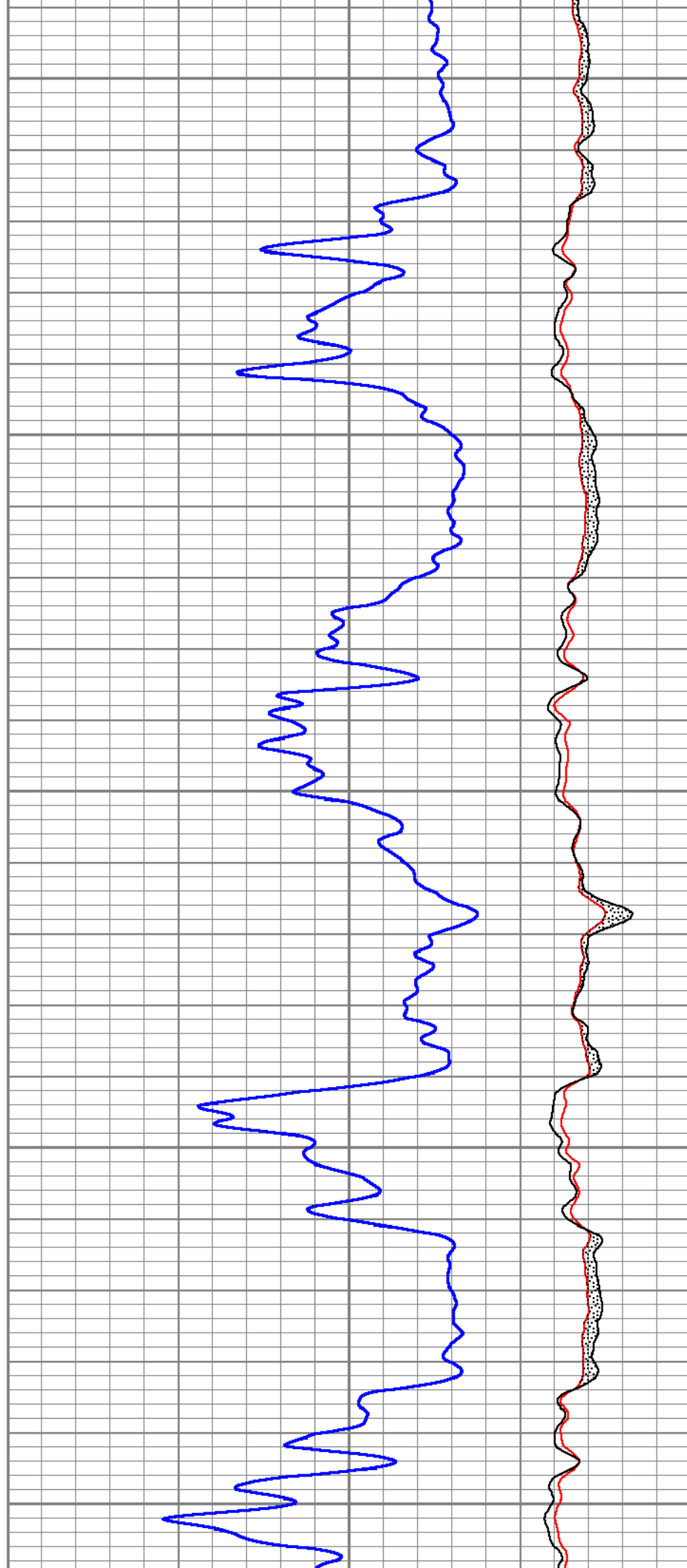
9600

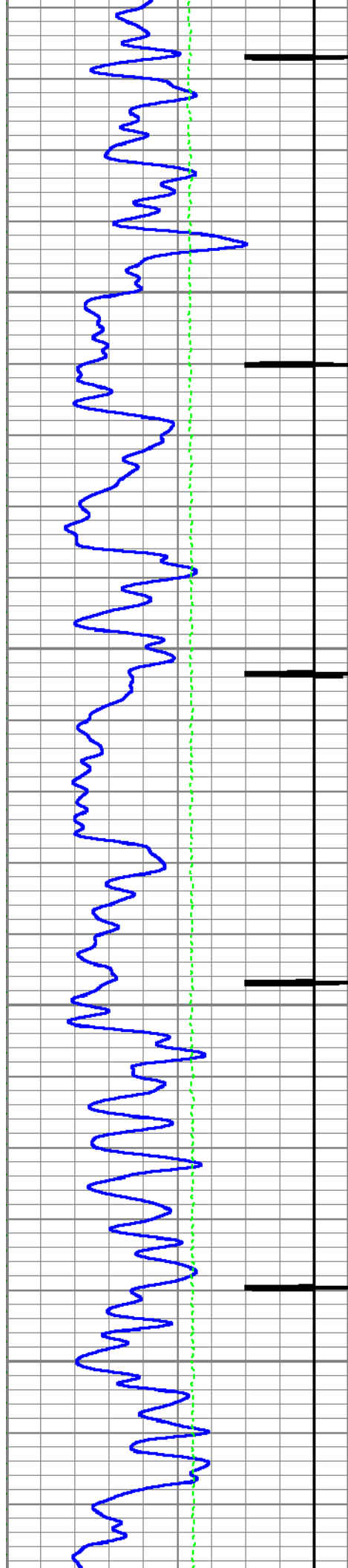




9700

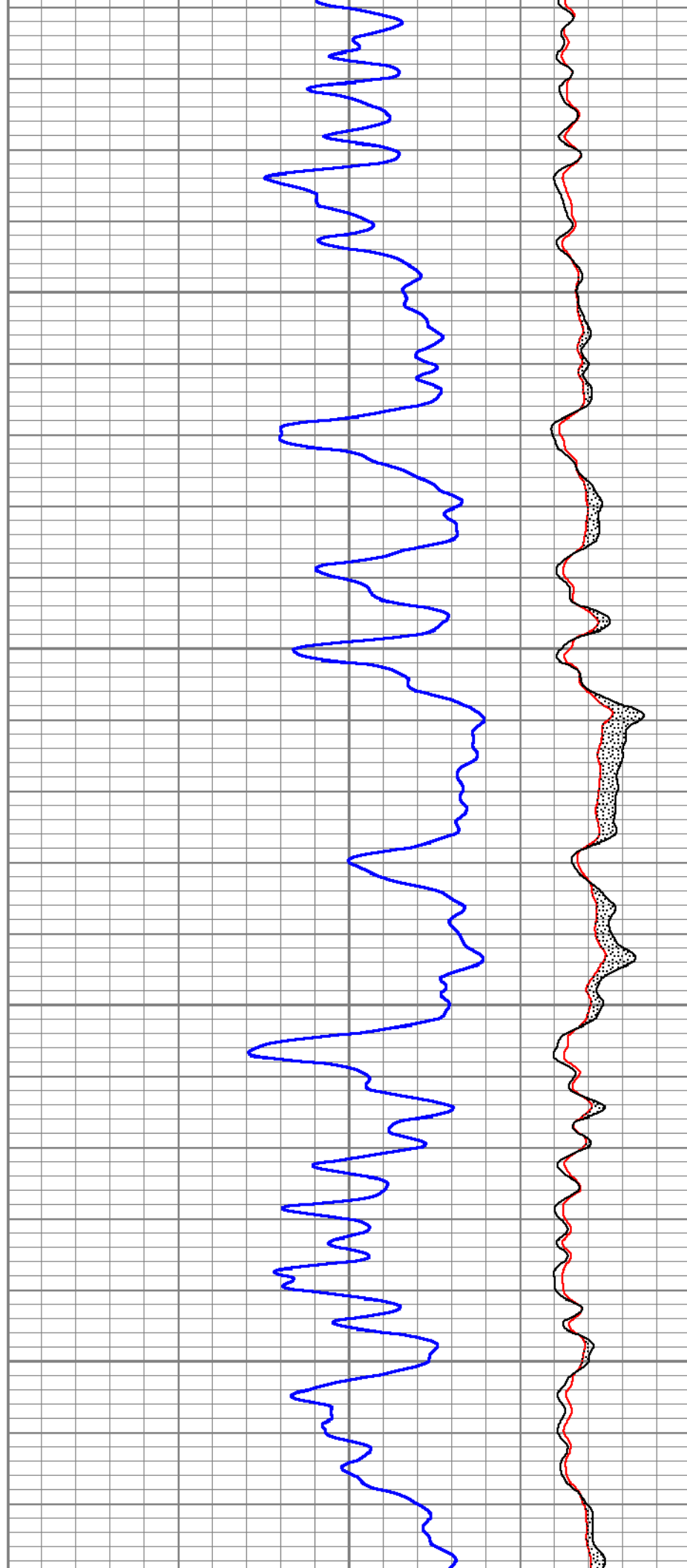
9800

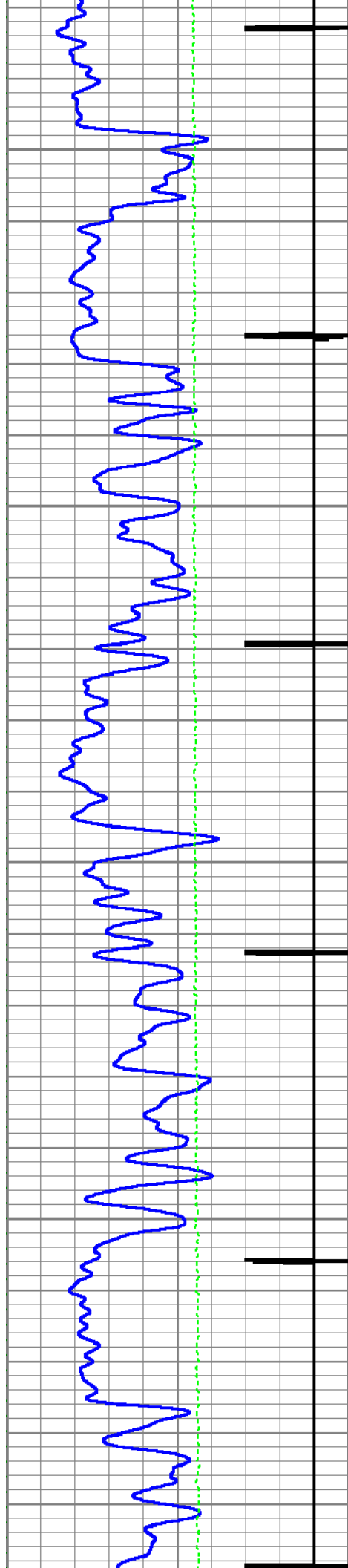




9900

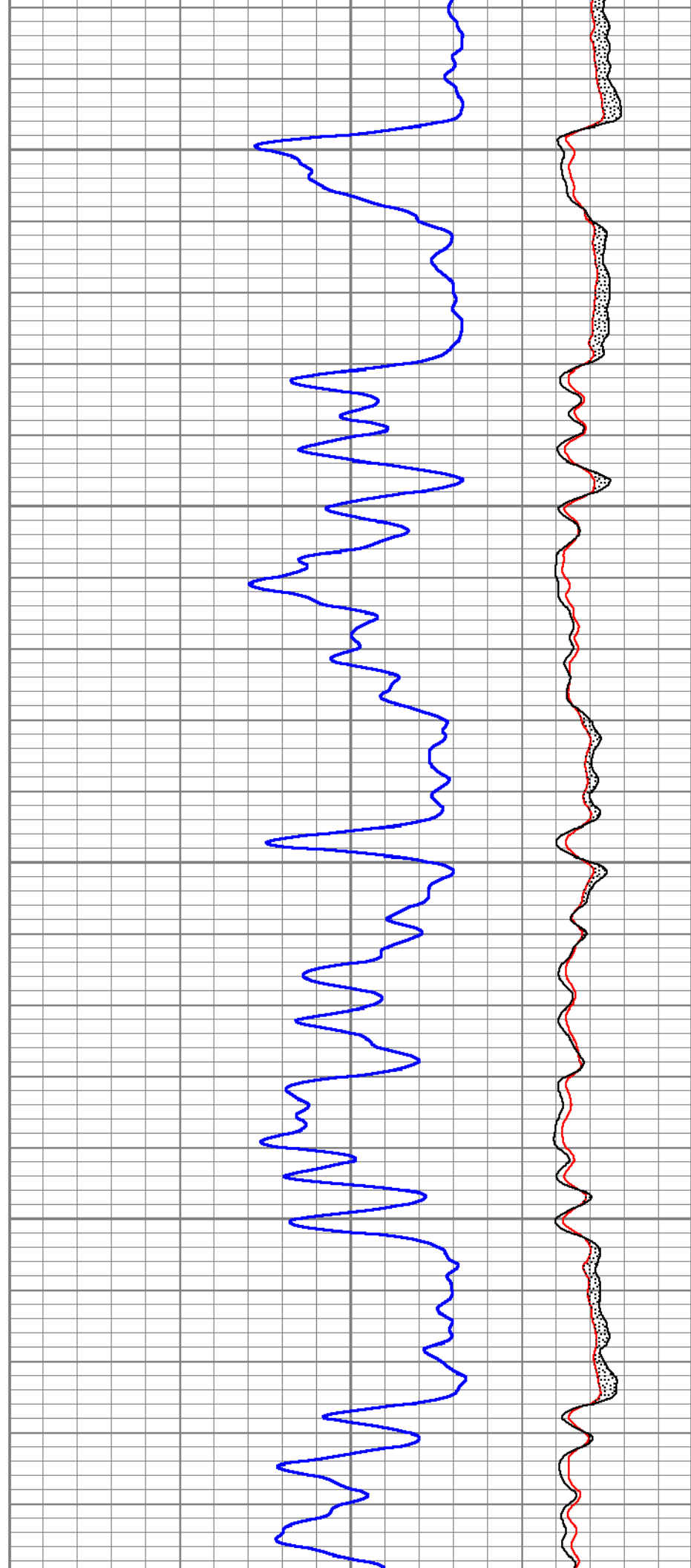
10000





10100

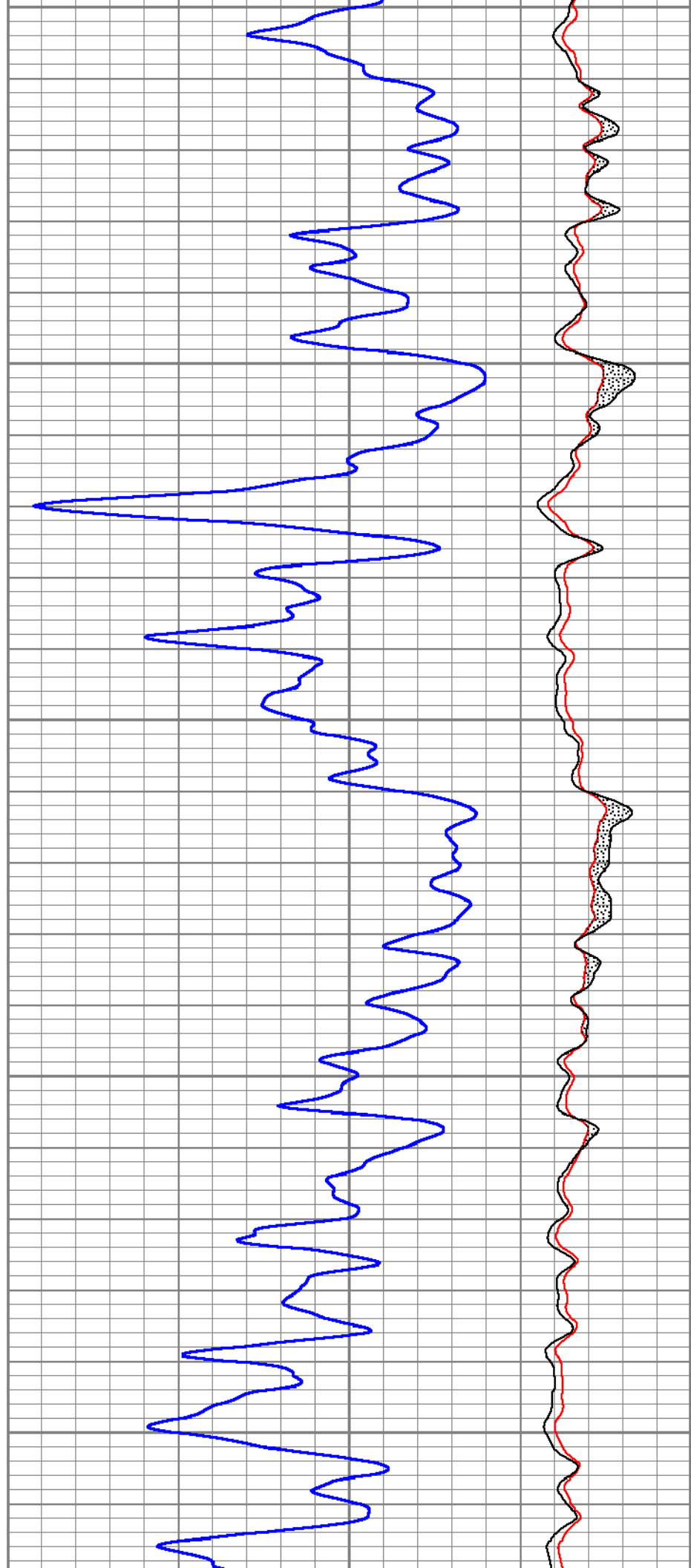
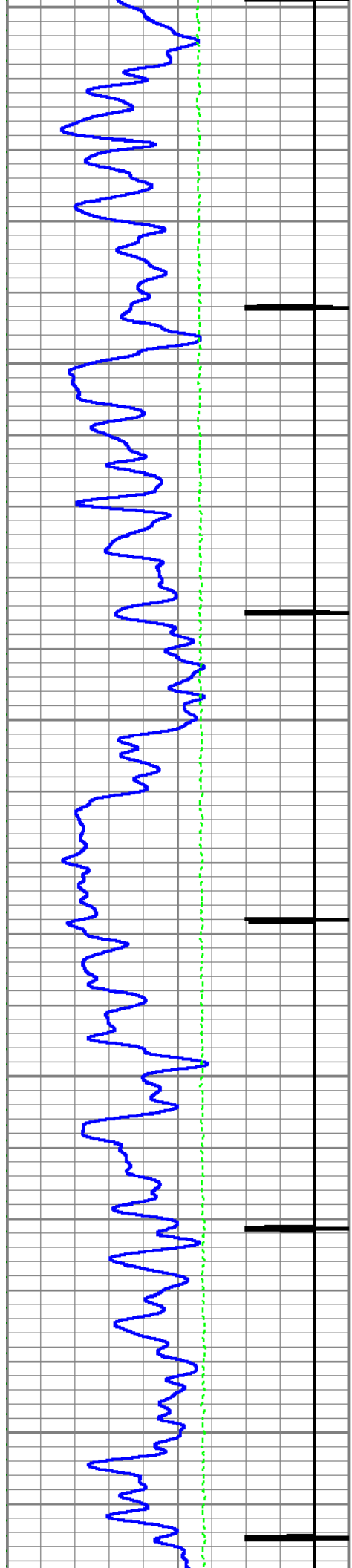
10200

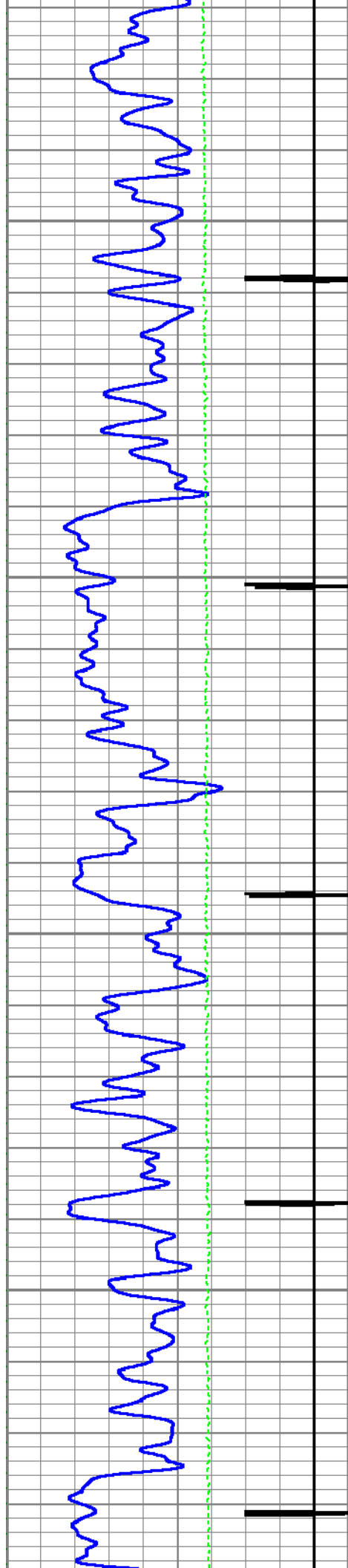


10300

10400

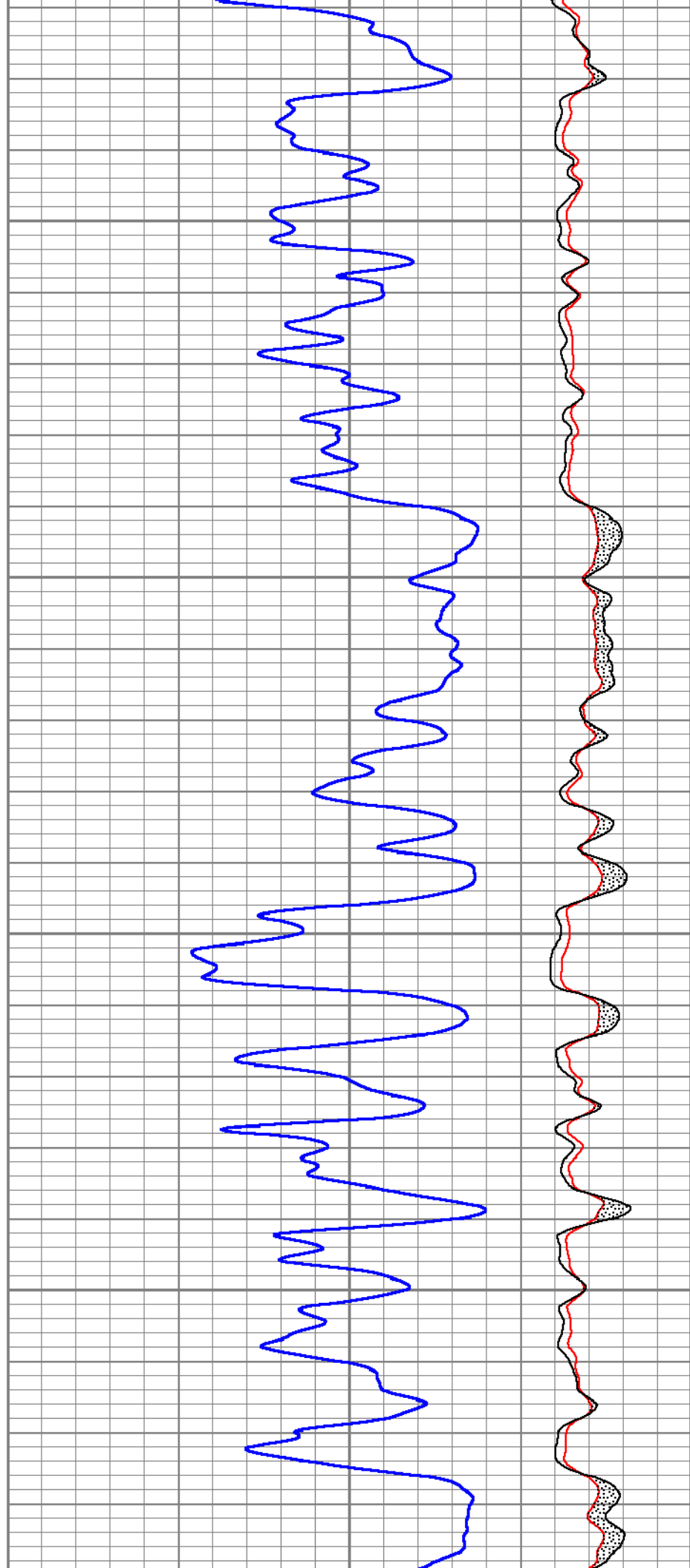
10500



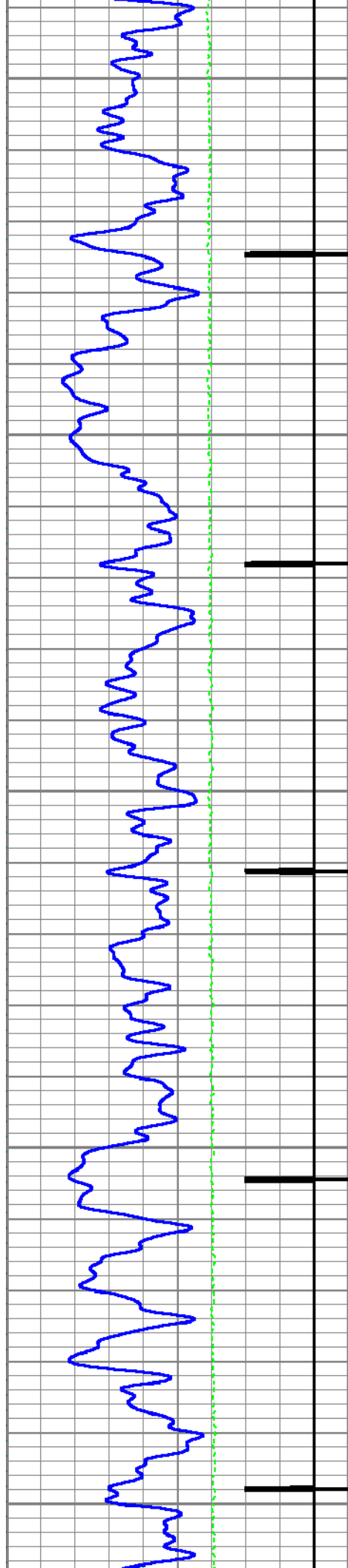


10600

10700

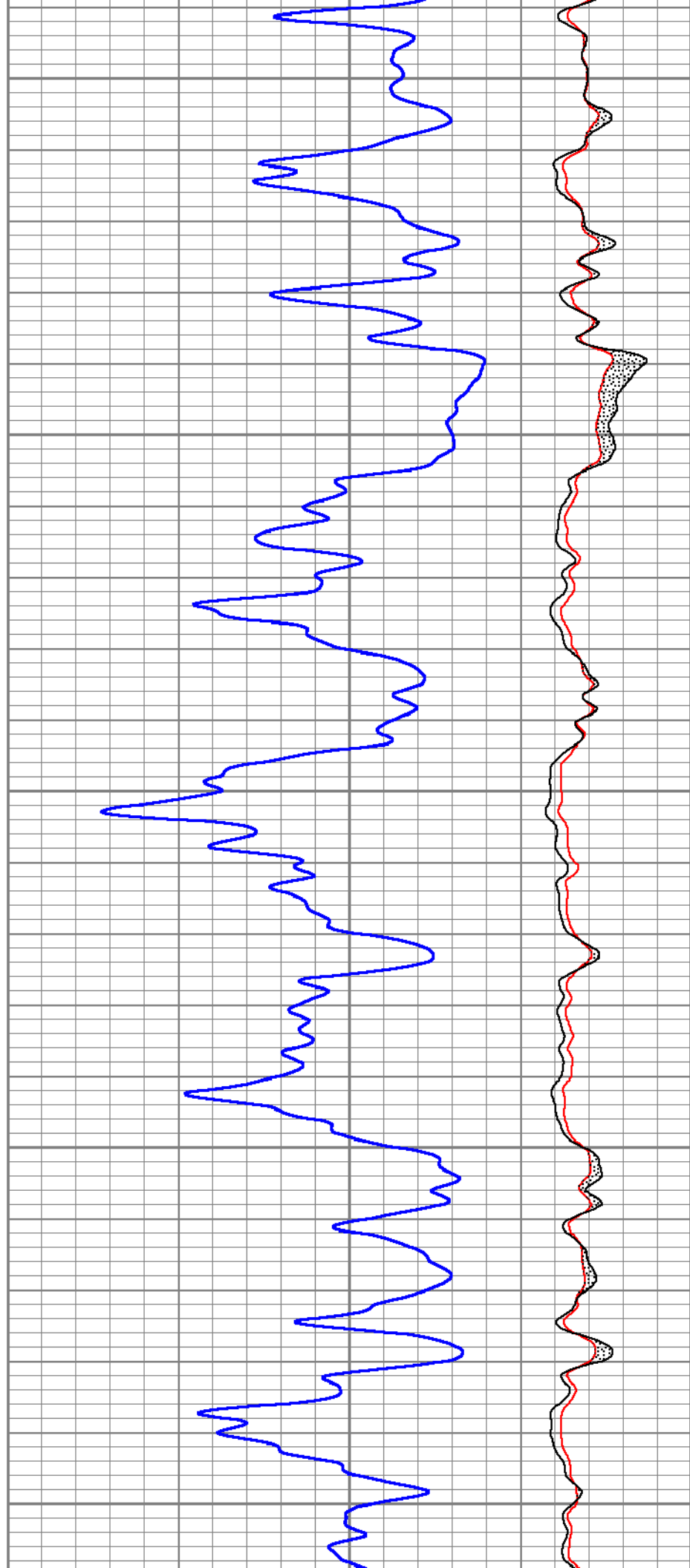


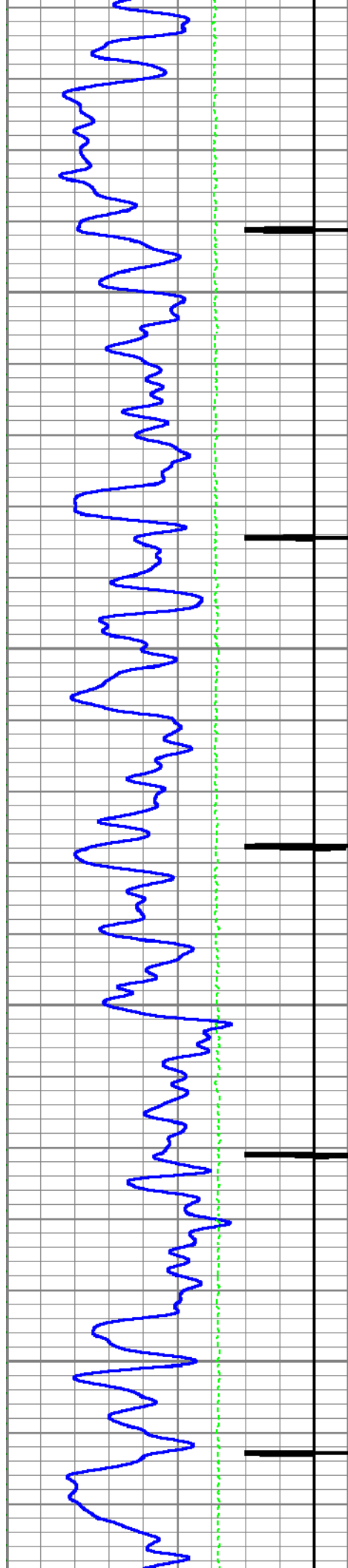




10800

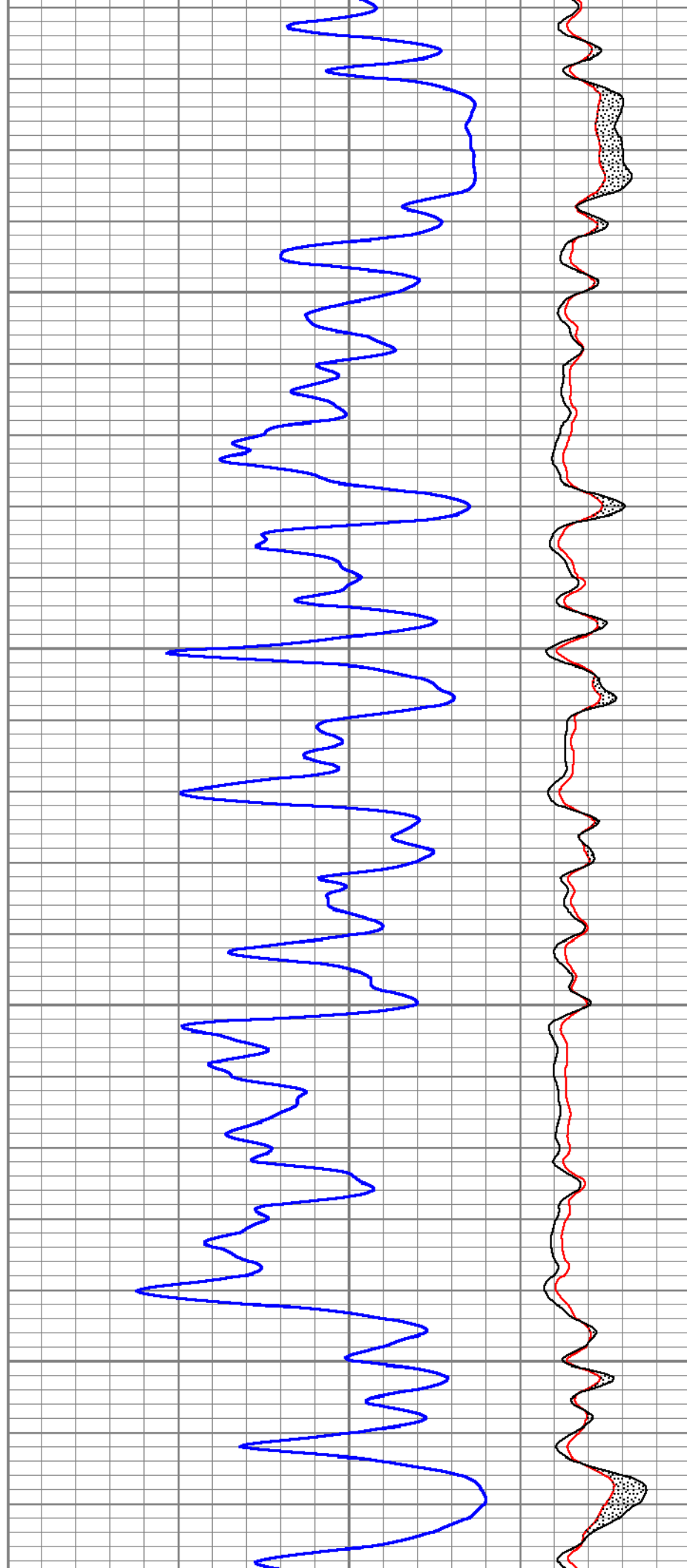
10900

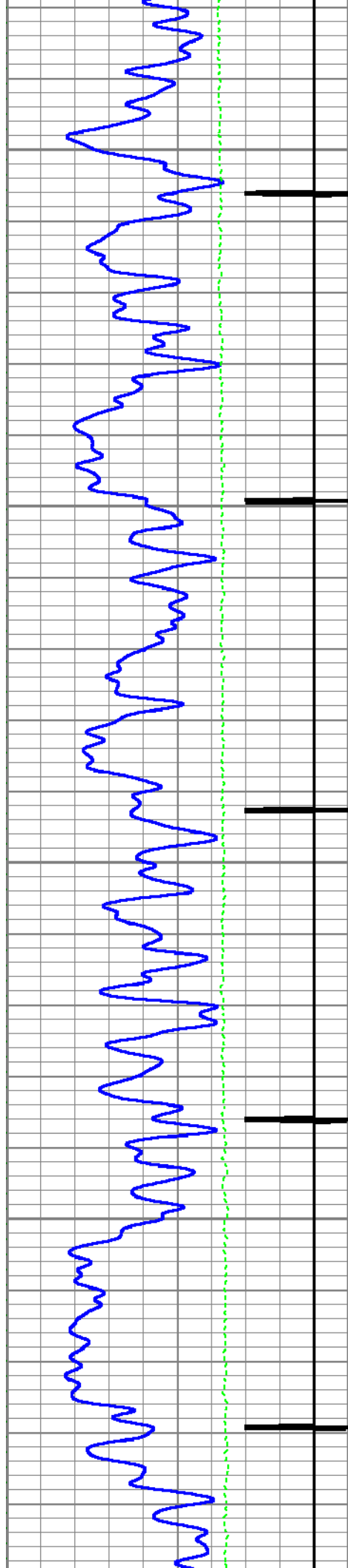




11000

11100

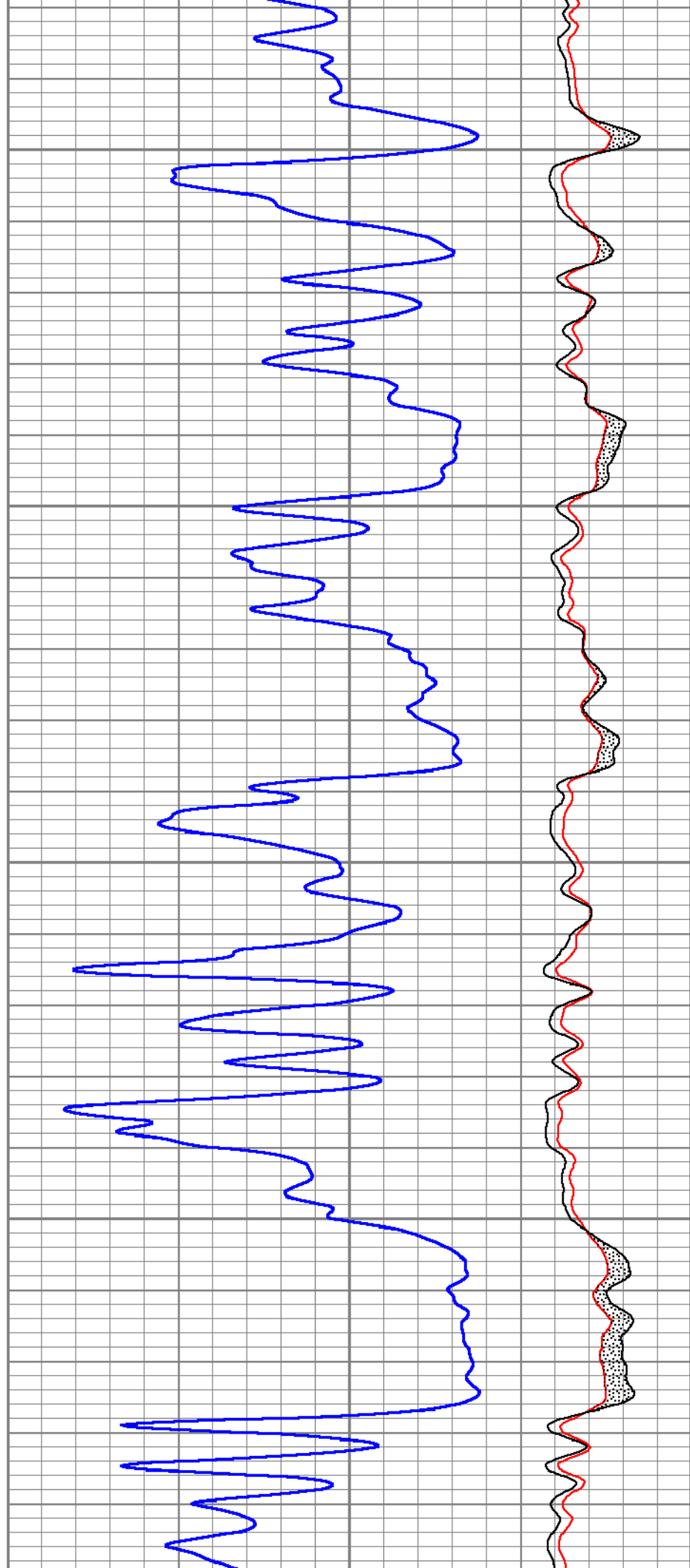


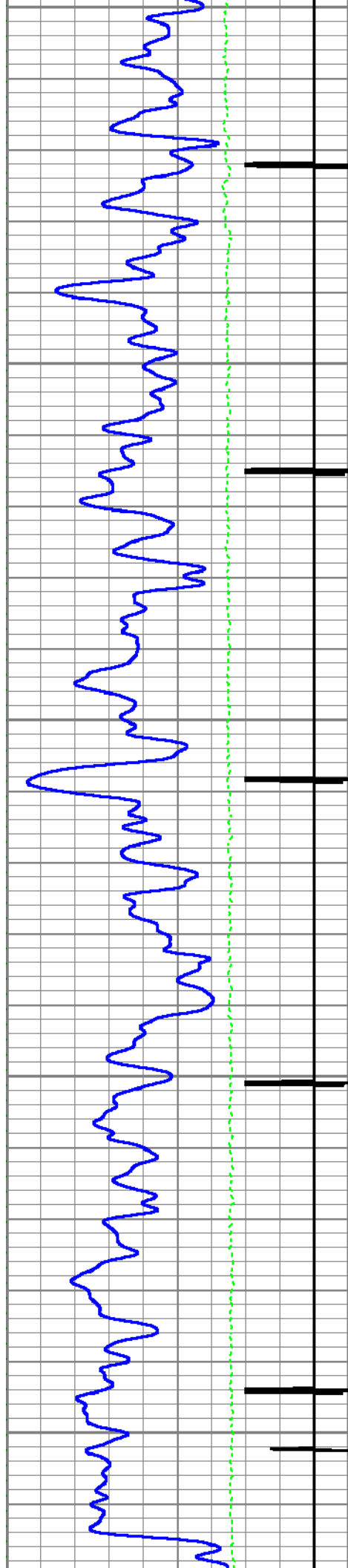


11200

11300

11400

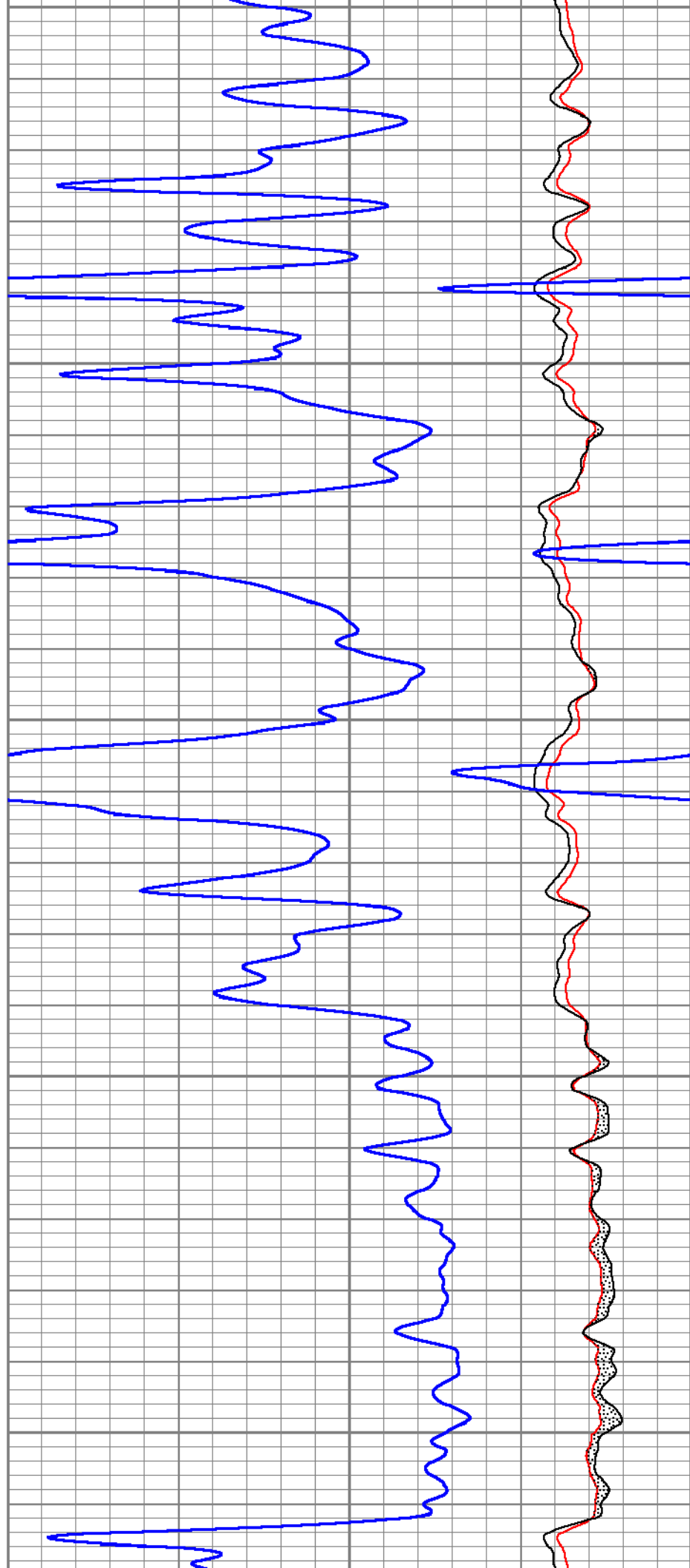


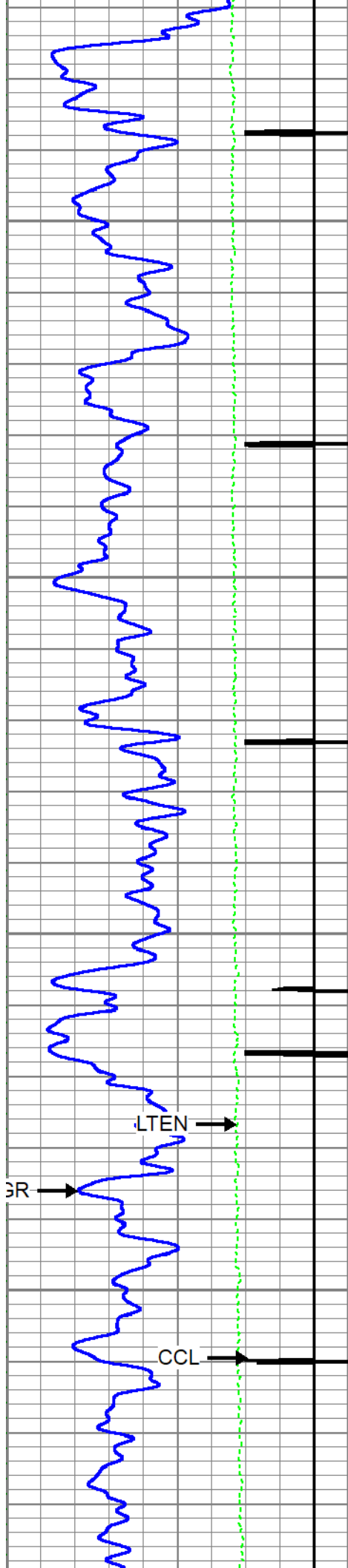


11400

11500

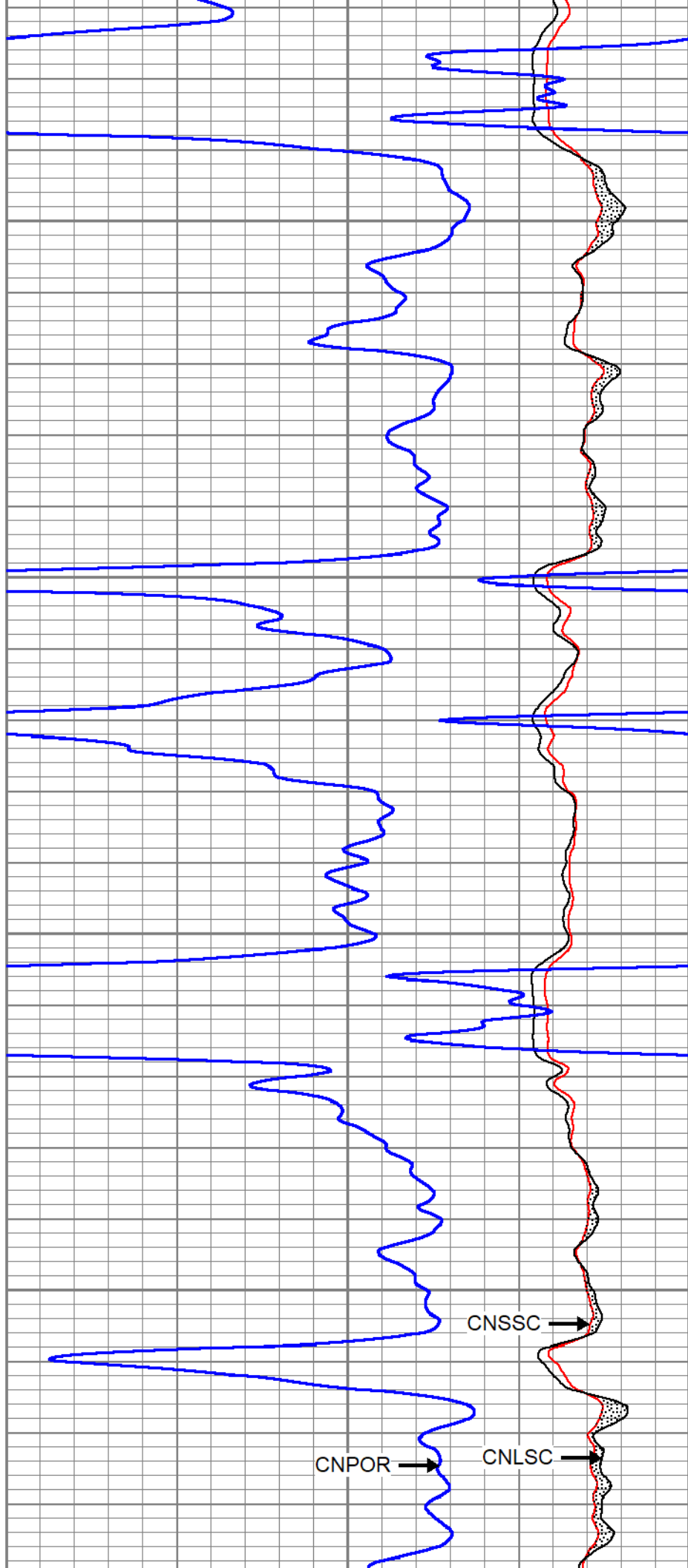
11600

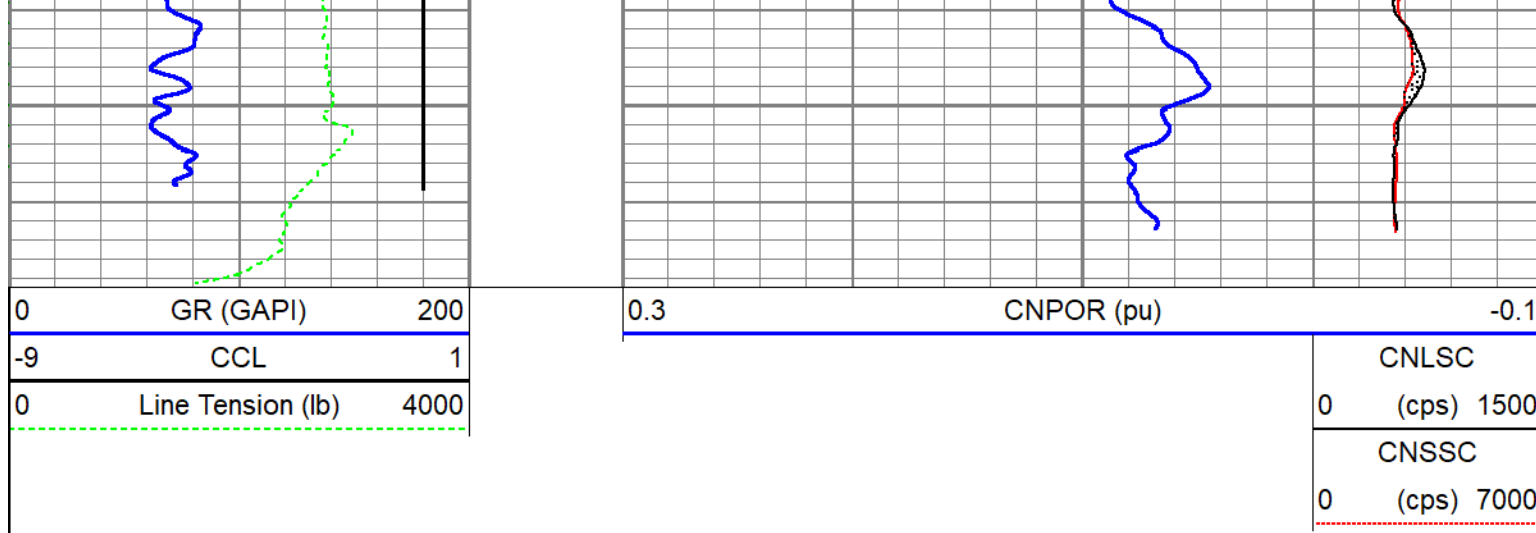




11700

11800

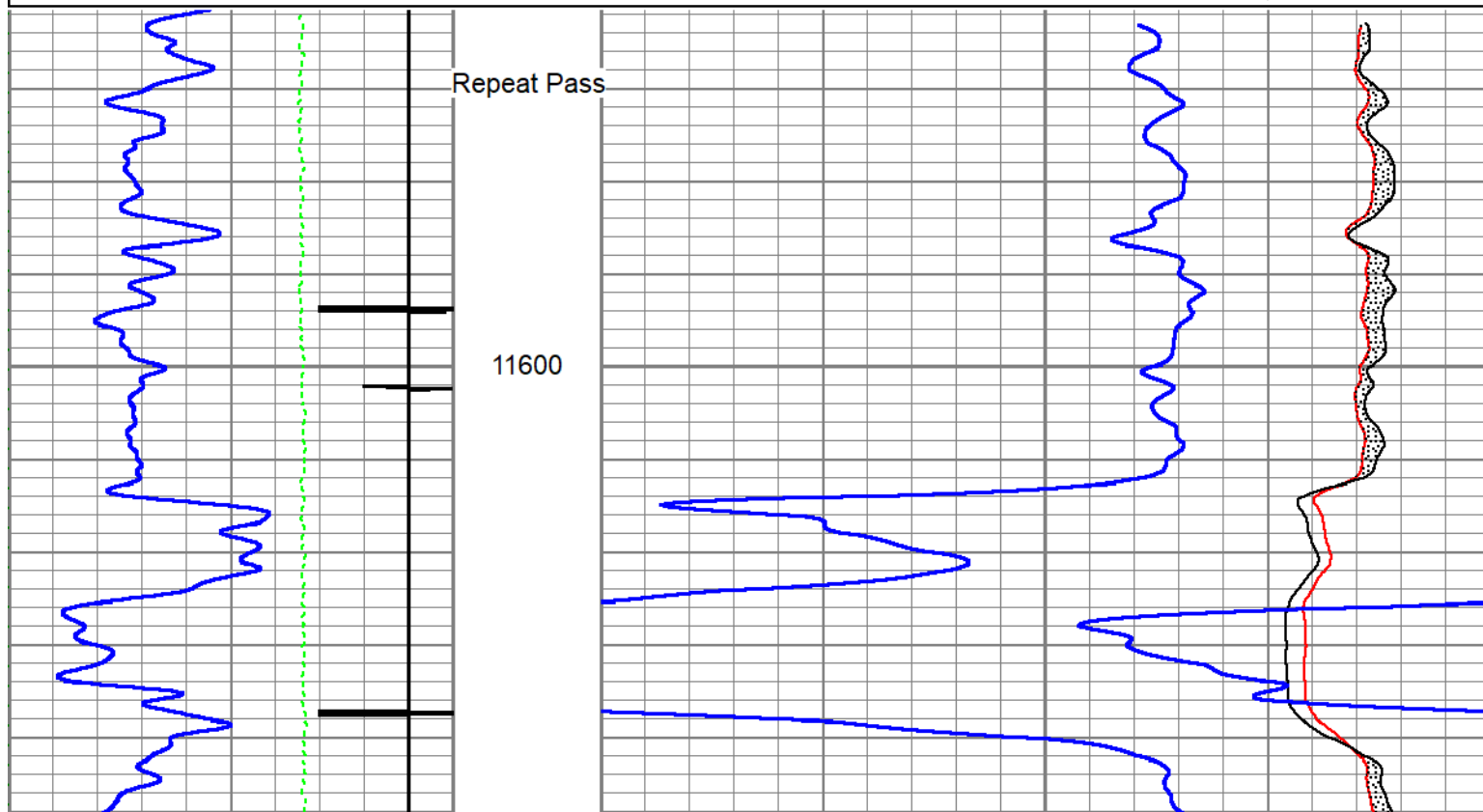
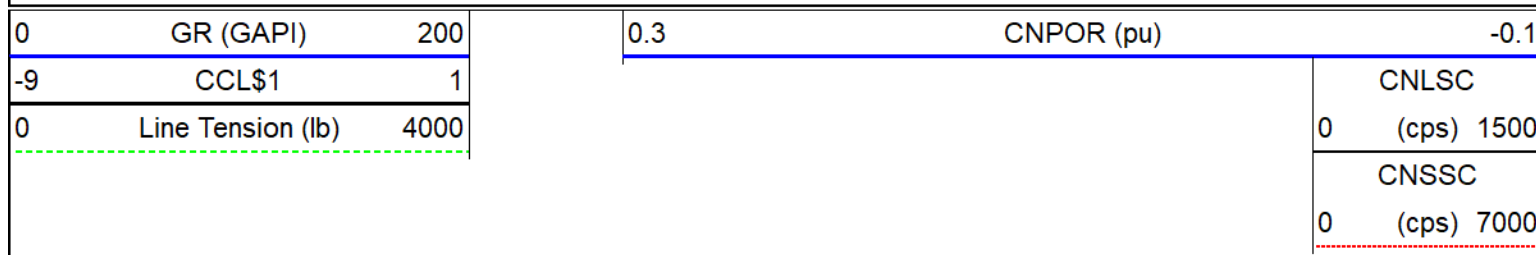


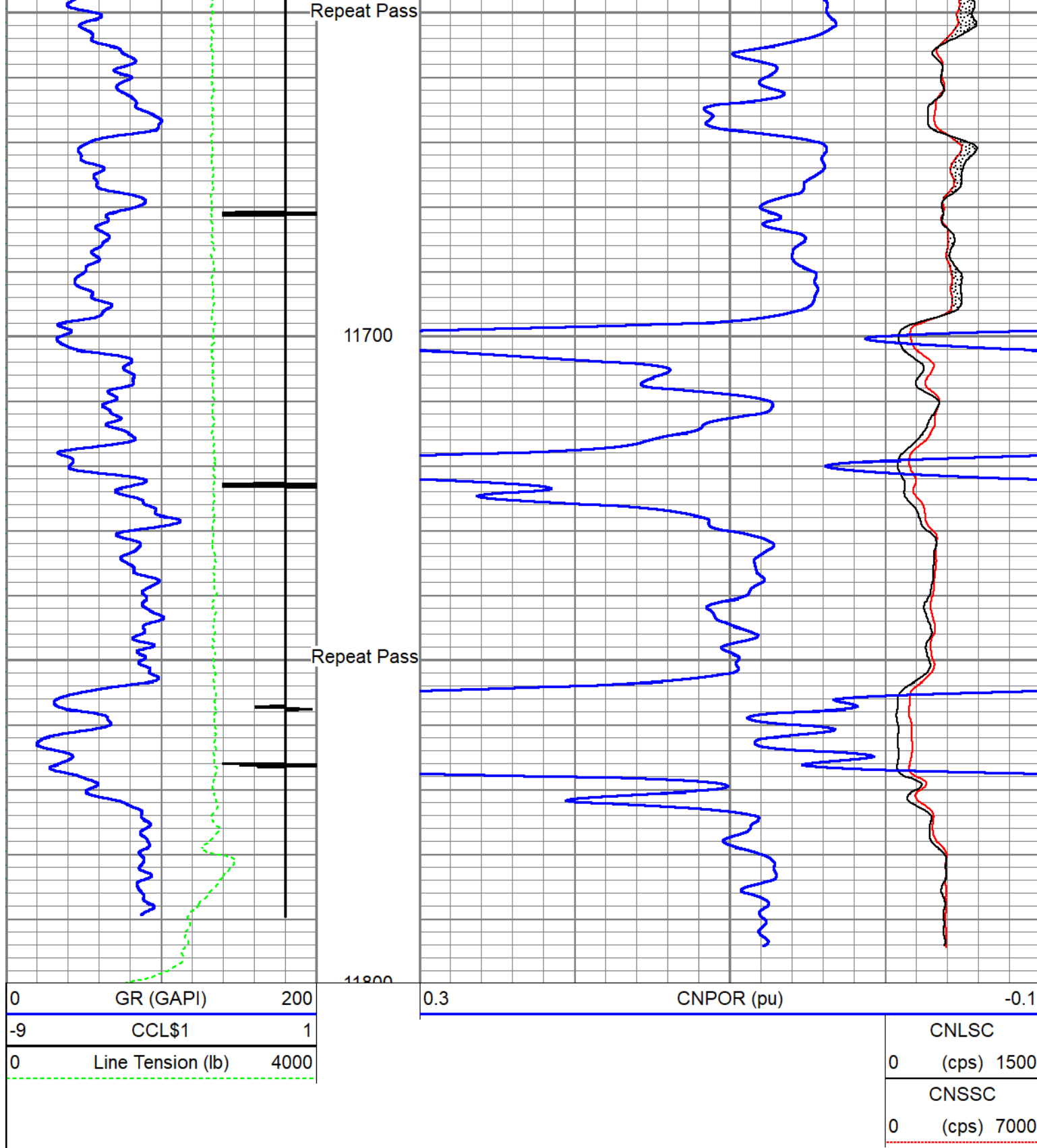




## Repeat Pass 5" = 100'

Database File	caerus_bju b26 fed 12d-26-496_rcbl-cn1_12-22-2022.db
Dataset Pathname	repeat
Presentation Format	twgcn1
Dataset Creation	Thu Dec 22 12:52:57 2022
Charted by	Depth in Feet scaled 1:240





### Calibration Report

Database File caerus\_bju b26 fed 12d-26-496\_rcbl-cn1\_12-22-2022.db  
Dataset Pathname main  
Dataset Creation Thu Dec 22 13:00:57 2022

### Compensated Neutron Calibration Report

Type / Serial: 275Dig / FW1409-35  
Source / Verifier: /  
Temperature:

SHOP CALIBRATION		Thu Mar 31 15:47:13 2022			
Tank Ratio	Cal Tube	Units			
Tank Porosity		SS/LS			
LS Detector		pu			
SS Detector		cps			
Tool Ratio		SS/LS			
Tool Porosity		pu			
Tool Constant =					
Field Verifier	SS Detector	LS Detector	Ratio	Porosity	
PRE-SURVEY VERIFICATION					
	SS Detector	LS Detector	Ratio	Porosity	
POST-SURVEY VERIFICATION					
	SS Detector	LS Detector	Ratio	Porosity	
Gamma Ray Calibration Report					
Serial Number:	110255				
Tool Model:	GCTacc_6-Pin-Base				
Performed:	Thu Sep 22 15:12:49 2022				
Calibrator Value:	165.0	GAPI			
Background Reading:	72.3	cps			
Calibrator Reading:	300.9	cps			
Sensitivity:	0.7216	GAPI/cps			
Inclinometer Calibration Report					
Performed:	Thu Sep 22 15:14:31 2022				
	Low Read.	High Read.	Low Ref.	High Ref.	
X Accelerometer	-910.00	1566.00	-1.00	1.00	gee
Y Accelerometer	-989.00	1748.00	-1.00	1.00	gee
Z Accelerometer	1.02	-895.47	0.00	1.00	gee
Segmented Cement Bond Log Calibration Report					
Serial Number:	FW1311-19				
Tool Model:	Probe275acc				
Calibration Casing Diameter:	4.500	in			
Calibration Depth:	38.237	ft			
Master Calibration, performed Thu Dec 22 08:35:22 2022:					



	Raw (v)		Calibrated (mv)		Results	
	Zero	Cal	Zero	Cal	Gain	Offset
3'	0.006	0.750	0.800	81.196	108.042	0.130
CAL	0.002	0.760				
5'	0.015	0.701	0.800	81.196	117.073	-0.921
SUM						
S1	0.007	0.754	0.000	100.000	134.009	-1.003
S2	0.007	0.757	0.000	100.000	133.390	-0.985
S3	0.006	0.767	0.000	100.000	131.461	-0.782
S4	0.007	0.761	0.000	100.000	132.784	-0.989
S5	0.009	0.755	0.000	100.000	133.981	-1.204
S6	0.006	0.747	0.000	100.000	135.070	-0.838
S7	0.007	0.752	0.000	100.000	134.071	-0.884
S8	0.007	0.743	0.000	100.000	135.879	-0.912

Internal Reference Calibration, performed (Not Performed):


	Raw (v)		Calibrated (v)		Results	
	Zero	Cal	Zero	Cal	Gain	Offset
CAL	0.000	0.000	0.002	0.760	1.000	0.000

Air Zero Calibration, performed Thu Dec 22 08:34:24 2022:

	Raw (v)		Calibrated (v)		Results	
	Zero		Zero		Offset	
3'	0.000		0.000		0.000	
5'	0.000		0.000		0.000	
SUM						
S1	0.000		0.000		0.000	
S2	0.000		0.000		0.000	
S3	0.000		0.000		0.000	
S4	0.000		0.000		0.000	
S5	0.000		0.000		0.000	
S6	0.000		0.000		0.000	
S7	0.000		0.000		0.000	
S8	0.000		0.000		0.000	

#### Inclinometer Calibration Report

Performed:	Thu Jul 28 15:55:38 2022				
	Low Read.	High Read.	Low Ref.	High Ref.	
X Accelerometer	-914.00	901.00	-1.00	1.00	gee
Y Accelerometer	-903.00	898.00	-1.00	1.00	gee
Z Accelerometer	3.47	893.02	0.00	1.00	gee

Sensor	Offset (ft)	Schematic	Description	Length (ft)	O.D. (in)	Weight (lb)
GCT_FMWR	19.32					
mSec_Count	19.32					
PPT_Status	19.32					


Tool Name	Length (ft)	Weight (lb)	O.D. (in)	Notes
RBT_Status	19.32			
Error_Ct	19.32			
SO BS CENT-2750-4500	1.33	3.25	10.00	Slip Over 2-3/4" I.D. for 4-1/2" O.D. Casing Bow Spring Centralizer
RBT8acc-Probe275acc (FW1311-19)	8.75	2.75	110.00	2.75" Radial Corrosion with accelerometer
WVFS8	14.82			
WVFS7	14.82			
WVFS6	14.82			
WVFS5	14.82			
WVFS4	14.82			
WVFS3	14.82			
WVFS2	14.82			
WVFS1	14.82			
WVF3FT	14.82			
WVF5FT	13.82			
GCT_HV	10.95			
RBT_ACCZ	10.57			
RBT_ACCY	10.57			
RBT_ACCX	10.57			
WVFSYNC	10.57			
WVFCAL	10.57			
CCL\$2	9.96			
CCL\$1	9.96			
GCT_TEMP	9.08			
GR	8.28			
GCT_IntTemp	7.24			
SO BS CENT-2750-4500	1.33	3.25	10.00	Slip Over 2-3/4" I.D. for 4-1/2" O.D. Casing Bow Spring Centralizer
GCacc-GCTacc_6-Pin-Base (110255)	5.00	2.75		Probe 2.75" Gamma Ray - CCL w/ Temp and 6 Pin Bottom
GCT_ACCZ	5.57			
GCT_ACCY	5.57			
GCT_ACCX	5.57			
CNT-275Dig (FW1409-35)	5.24	2.75	40.00	Probe Digital CNL
CNLSC	2.24			
CNSSC	1.81			
SO BS CENT-2750-4500	1.33	3.25	10.00	Slip Over 2-3/4" I.D. for 4-1/2" O.D. Casing Bow Spring Centralizer
Plug-FA108-0000	0.33	1.38	1.00	1.38" Bull Plug

Dataset: caerus\_bju b26 fed 12d-26-496\_rcbl-cn1\_12-22-2022.db: field/well/run1/main

Total length: 19.32 ft

Total weight: 181.00 lb

O.D.: 3.25 in

Well	BJU B26 Fed 12D-26-496		
Field	Grand Valley		
County	Garfield	State	Colorado
		Compensated Neutron Gamma Ray Casing Collar Log	