

Final Reclamation and Stormwater Inspection

Date: 01/09/2023

Operator: ST CROIX OPERATING INC - 81490

Location ID: 482780

Inspection Document #: 696105675

Washington County, CO

NENE Section 27 T3S R49W

Dylan Edwardson
Reclamation Specialist, COGCC



COLORADO
**Oil & Gas Conservation
Commission**

Department of Natural Resources

Inspection Photos
Location Name: Horseshoe 1
Location ID: 482780



Photos 1 & 2. Facing southwest (photo 1) from the entrance to the location and northeast (photo 2) from the north end of the location. Photos illustrate that topsoil stockpiles are susceptible to wind and water erosion as they're comprised of unconsolidated material that is not stabilized.

Inspection Photos
Location Name: Horseshoe 1
Location ID: 482780



Photo 3. Facing south near one of the topsoil stockpiles on the west end of the location. Photo illustrates this stockpile has not been stabilized with no evidence of temporary equipment tracking and unconsolidated material present. Tires tracks are from a loader grabbing soil from the stockpile and is not considered a temporary BMP.

Inspection Photos
Location Name: Horseshoe 1
Location ID: 482780



Photos 4 & 5. Facing northeast and southeast from the western topsoil stockpile. See comments in Photo 3. Photos also illustrate no evidence of any stormwater BMP in place to prevent sediment laden stormwater from exiting off location.

Inspection Photos
Location Name: Horseshoe 1
Location ID: 482780



Photos 6 & 7. Facing west and east from the southern portion of the location. Photo illustrates no stormwater control BMPs installed to prevent sediment laden stormwater from exiting off location. Also pictured, this southwest portion of the location was in-process of having the topsoil moved back to its relative position and does not have any controls or BMPs to prevent wind and water erosion.

Inspection Photos
Location Name: Horseshoe 1
Location ID: 482780



Photo 8. Facing north from the southeast corner of the location. Photo illustrates no stormwater controls/BMPs are installed to prevent sediment laden stormwater from exiting off location. This is the downslope/gradient side of the location. Stormwater controls should be implemented and installed until final reclamation has been achieved.

Inspection Photos
Location Name: Horseshoe 1
Location ID: 482780



Photos 9 & 10. Facing north and southeast from the center portion of the location. Photos illustrate soil stockpiles not labeled or segregated with corresponding soil layers/horizons and without any protections from wind and water erosion (e.g. no temporary stabilization implemented).

Inspection Photos
Location Name: Horseshoe 1
Location ID: 482780



Photo 11. Taken near the center portion of the location. Photo illustrates DA/PA well. Concrete debris will need to be removed prior to final reclamation activities.

Inspection Photos
Location Name: Horseshoe 1
Location ID: 482780

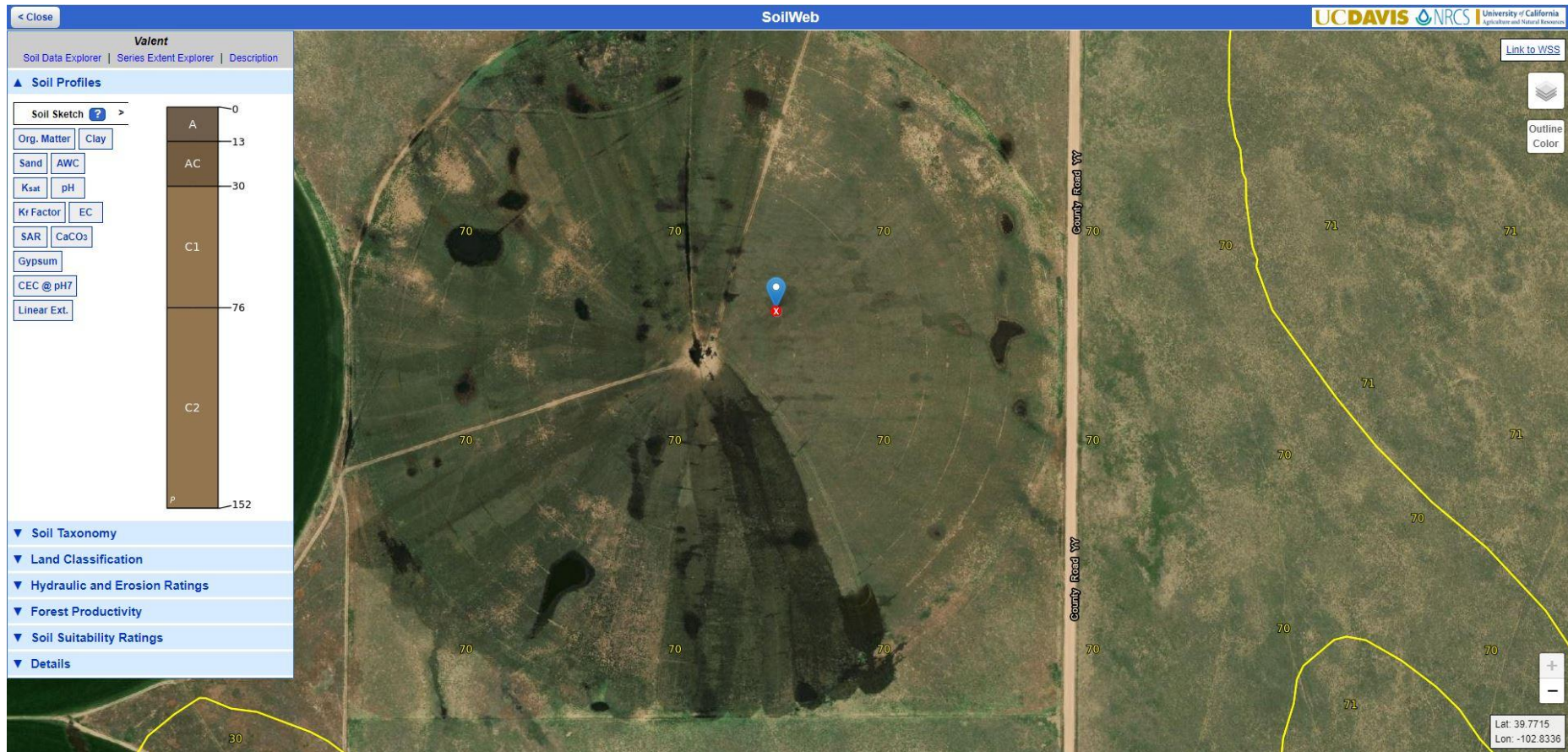


Photo 12. Screen shot from UC Davis Soil Web with the approximate well location plotted as red X/blue marker. Photo illustrates that the Soil Type 70- Valent Sand, A and AC horizon (e.g. topsoil), is approximately 30cm or ~12in. The operator stated that 3,148 cubic yards of topsoil would salvaged from the construction area which equates to approximately 4in of topsoil removed (see next photo). See inspection report for further detail.

Inspection Photos
Location Name: Horseshoe 1
Location ID: 482780

		Topsoil salvage Depth in feet (eg .5=6inches)			Cubic yards
Acres	Ft2		Cubic feet		
5.83	253,954.80	1	253,954.80		9,396
Acres	Ft2	CY known	Depth of spread in feet	Depth in inches	
5.83	253,954.80	3148	0.33	4.02	

Photo 13. Screenshot of topsoil calculator. Red outlined entry shows how much topsoil should have been salvaged based on Soil Web Results from UC Davis. Bottom entry shows topsoil salvaged based on operator supplied attachments on the Topsoil Protection Plan (Doc #402948673).